



# The Road Inventory of Big Cypress National Preserve BICY - 5120



**national park service**

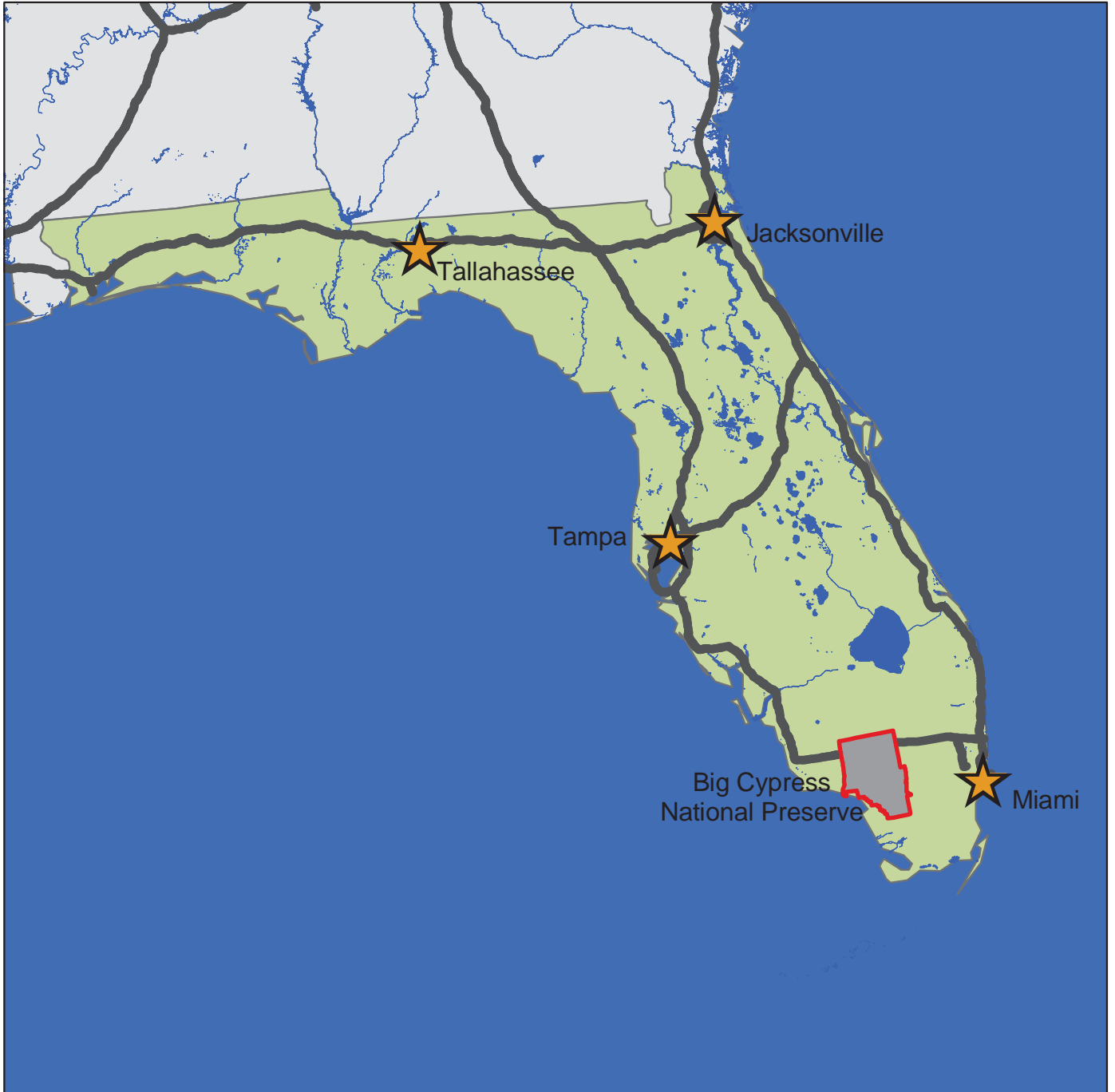


## Road Inventory Program

Prepared By:  
Federal Highway Administration  
Eastern Federal Lands Highway Division  
Cycle 3



# Big Cypress National Preserve in Florida





## TABLE OF CONTENTS

<b><u>SECTION</u></b>	<b><u>PAGE</u></b>
<b>1. INTRODUCTION</b>	<b>1 - 1</b>
<b>2. PARK SUMMARY INFORMATION</b>	
National Park Summaries	<b>2 - 1</b>
Cost to Improve Based on Historical and Estimated Data	<b>2 - 2</b>
Paved Route Miles and Percentages by Functional Class and PCR	<b>2 - 3</b>
<b>3. PARK SUMMARY MAPS</b>	
Route Location Key Map	<b>3 - 1</b>
Route Condition Key Map – PCR Mile by Mile	<b>3 - 3</b>
<b>4. PARK ROUTE INVENTORY</b>	
Route Identification Lists (Numeric and Alphabetic)	<b>4 - 1</b>
<b>5. PAVED ROUTE CONDITION RATING SHEETS</b>	<b>5 - 1</b>
<b>6. MANUALLY RATED PAVED ROUTE CONDITION RATING SHEETS</b>	<b>6 - 1</b>
<b>7. PARKING LOT CONDITION RATING SHEETS</b>	<b>7 - 1</b>
Paved parking Areas	
<b>8. PARKWIDE / ROUTE MAINTENANCE FEATURES SUMMARY</b>	<b>8 - 1</b>
<b>9. PARK ROUTE MAINTENANCE FEATURES ROAD LOG</b>	<b>9 - 1</b>
<b>10. APPENDIX</b>	
A. Glossary of Terms and Abbreviations	<b>10 - 1</b>
B. Description of Rating System	<b>10 - 3</b>
C. Digital Image Information	<b>10 - 7</b>
D. Metadata	<b>10 - 8</b>

## INTRODUCTION

**Background:** In July 1976, the National Park Service (NPS) and the Federal Highway Administration (FHWA) entered into a Memorandum of Agreement (MOA), establishing the Road Inventory Program (RIP). In 1980, the NPS and the FHWA terminated the 1976 MOA and entered into a new MOA that provided for the completion of the initial phase of the RIP. The purpose of the RIP, per the 1980 MOA, was to maintain and update RIP data in order to develop long-range and short-range costs and programs to bring National Park Service (NPS) roads up to, or to maintain, designated standards, and to establish a maintenance management program.

The FHWA's Federal Lands Highway (FLH) was assigned the task of identifying condition deficiencies and corrective priorities along with associated corrective costs, inventorying maintenance features (e.g., culverts, signs, guardrail, etc.), summarizing the data and findings in a report, and providing a photographic record of the road system.

The FLH completed the initial phase of the RIP in the early 1980's. As a result of this effort, each park received a RIP book, also known as the "Brown Book," that included the information collected during this initial RIP phase.

In an effort to maintain and update the RIP data, a cyclical data collection and reporting process was re-established in the 1990's. The FLH completed two cycles of RIP data collection between 1994 and 2001. Cycle 1 data was collected in 44 large parks from 1994 to 1995. This data was found to be unusable for comparison to future cycles. Cycle 2 data was collected from March 1997 to January 2001 in 79 large parks and 5 small parks containing 4,874 route miles. Each park received a copy of a Cycle 2 RIP Report, also known as the "Blue Book."

Since 1984, the RIP Program has been funded through the Federal Lands Highway Program's Park Roads and Parkways (PRP) Program. Currently, the NPS Washington Headquarters' Park Facility Management Division is responsible for coordinating the RIP program with the FLH. The FLH Washington office coordinates policy and prepares national reports and needs assessment studies for Congress.

In 1998, the Transportation Equity Act for the 21<sup>st</sup> Century (TEA-21) amended Title 23 U.S.C., and inserted Section 204(a)(6) which requires the Federal Highway Administration and the National Park Service, to develop, by rule, a Pavement Management System (PMS) for the park roads and parkways serving the National Park System. As a result of the requirements in TEA-21, the NPS and the FHWA are in the process of developing a PMS. The PMS will assist the decision-makers in effectively spending limited PRP Program funds. The PMS will provide information for planning and programming road maintenance, rehabilitation, and reconstruction activities. RIP data will provide the basic information for this system.

Key information included in the RIP is the mileage inventory and condition assessments accomplished by the RIP Program. The mileage and condition data are used in the current allocation formula of PRP Program funds.

**RIP Cycle 3:** A third RIP cycle was initiated in 2001. Data was collected from March 2001 to July 2004, and is included in the Cycle 3 Reports. Cycle 3 includes 254 large and small parks with a combined total of 5,455 route miles.

In the Cycle 3 Reports, a general condition rating of excellent, good, fair and poor is ascribed to each one-mile section of paved roadway, and to each paved parking area. This condition rating system provides a realistic means of assessing the general funding needs for road improvements. Along with these descriptive condition ratings, a numerical rating between 0 and 100 is ascribed to each mile of road and to each parking area.. This numerical rating is called a Pavement Condition Rating (PCR). The PCR rating system is described in Section 10 of this report.

All of the fieldwork required for obtaining inventory, condition, and maintenance feature information is coordinated with each park and the regional offices to ensure that the information in the RIP reports is accurate.

The FLH is responsible for all of the data presented in this report. Anyone having questions or comments regarding the contents of this report is encouraged to contact the FHWA RIP Coordinator. It is our aim to provide exceptional customer satisfaction in our delivery of the RIP program.

FHWA RIP Coordinator:

James A. Amenta  
FHWA/EFLHD  
Technical Services, HTS-15  
21400 Ridgetop Circle  
Sterling, VA 20166  
(703) 404-6366

# Big Cypress National Preserve Summaries

## Overall Park Mileage Summary

<b>PARK TOTAL SUMMARY ITEMS</b>	<b>TOTAL</b>	<b>DATE</b>
Paved ARAN Driven Route Miles	43.53	8/21/2003
Unpaved Estimated Route Miles	32.78	8/21/2003
Paved ARAN and Unpaved Route Miles	76.31	
Paved ARAN Driven Lane Miles	87.06	8/21/2003
Paved MRR Lane Miles	0.00	
Parking Lot Lane Miles	2.54	8/21/2003
Total Paved Lane Miles	89.60	

Notes: Total Paved Lane Miles includes the sum of Paved ARAN Driven Lane Miles, Paved MRR Lane Miles, and Parking Lot Lane Miles

Unpaved Route Miles are estimates, they have not been inventoried by the Roadway Inventory Program (RIP)

## Big Cypress National Preserve Summaries

### Cost to Improve to "Excellent" Condition

SOURCE	WORK PERFORMED	COST PER MILE	INITIAL CONDITION
FHWA Awarded Projects	Surface Maintenance	\$30,000	Excellent
FHWA Awarded Projects	3-R (Resurfacing)	\$110,000	Good
FHWA Awarded Projects	3-R (Resurfacing, Restoration, and Rehabilitation) Projects	\$560,000	Fair
FHWA Awarded Projects	4-R (Resurfacing, Restoration, Rehabilitation, and Reconstruction) Projects	\$1,540,000	Poor

Based on the above table, the cost to improve ARAN driven paved road condition miles to "Excellent" PCR are:

Existing Condition	Existing Miles	Estimated Cost to Improve
Excellent	1.83	\$54,900
Good	3.82	\$420,200
Fair	19.14	\$10,718,400
Poor	18.74	\$28,859,600
<b>Totals</b>	<b>43.53</b>	<b>\$40,053,100</b>

The above numbers include the 35% PE, CE and contingency costs and are national averages. The cost estimates were used in the calculations for the 2004 Reauthorization Bill to determine the level of funding required to bring all the NPS roads into a Pavement Condition Rating (PCR) of Good (85).

These numbers are for preliminary planning purposes only and should not be used for project level proposals. For park planning level analysis, apply your park multiplier for more accurate regional costs.

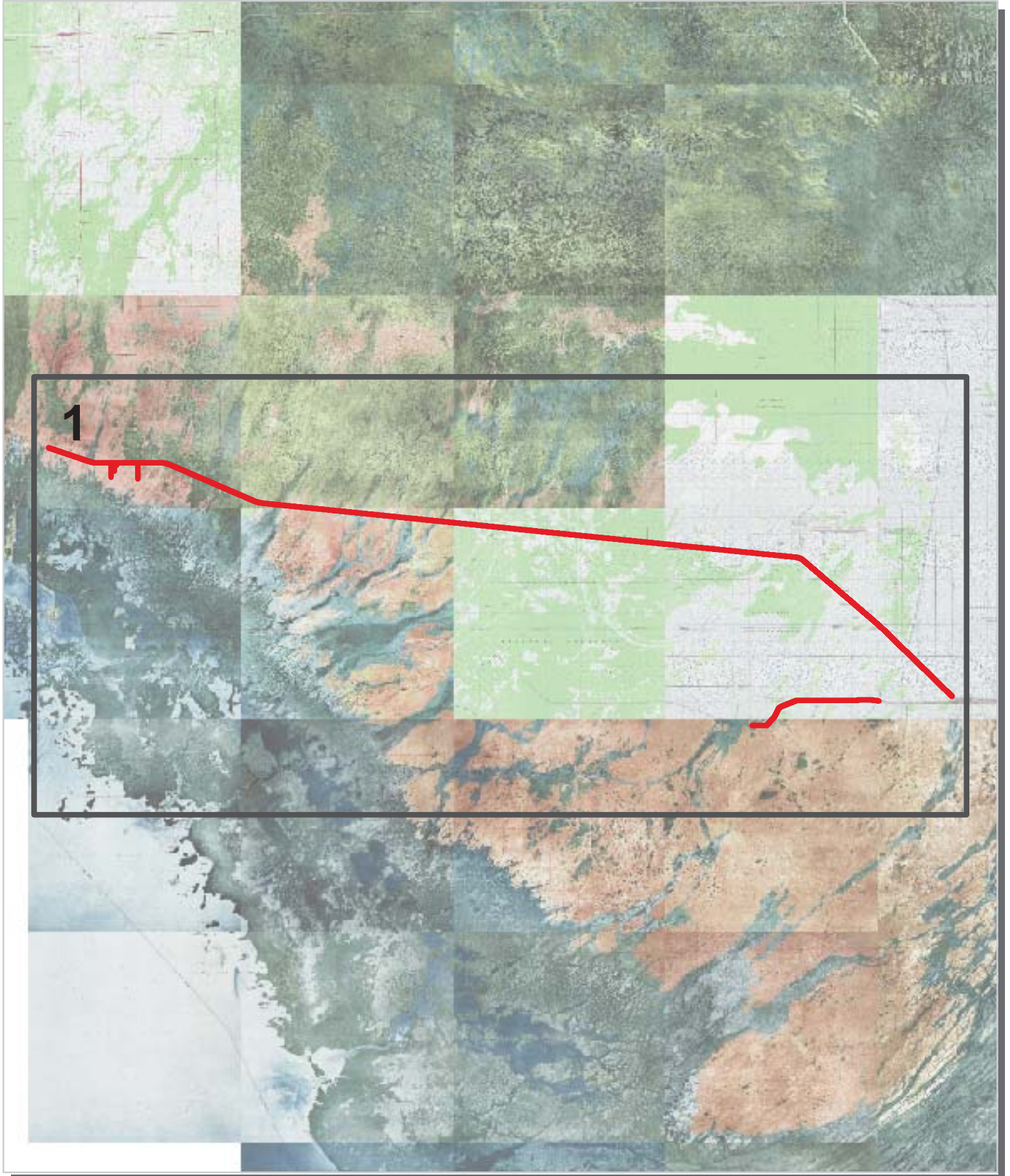
## Big Cypress National Preserve Summaries

### Paved Route Miles and Percentages by Functional Class and PCR for ARAN Driven Paved Roads

F.C.	Pavement Condition Rating								TOTAL MILES
	Poor (<=60)		Fair (61-84)		Good (85-94)		Excellent (95-100)		
	MILES	%	MILES	%	MILES	%	MILES	%	
1	15.42	35.42%	16.82	38.64%	2.74	6.29%	1.39	3.19%	36.37
2	3.14	7.21%	2.00	4.59%	0.96	2.21%	0.40	0.92%	6.50
3									
4									
5	0.18	0.41%	0.32	0.74%	0.12	0.28%	0.04	0.09%	0.66
6									
7									
8									
<b>Totals</b>	<b>18.74</b>	<b>43.05%</b>	<b>19.14</b>	<b>43.97%</b>	<b>3.82</b>	<b>8.78%</b>	<b>1.83</b>	<b>4.20%</b>	<b>43.53</b>



# Big Cypress National Preserve Route Location Key Map



 Park Owned Routes



# Big Cypress National Preserve Route Location Area Map 1



Unique colors used to differentiate routes



# Big Cypress National Preserve Route Condition Key Map PCR - Mile by Mile



PCR	Poor		Fair		Good		Excellent	
		(<=60)		(61 - 84)		(85 - 94)		(95 - 100)

\* If the PCR rating is not available for a section, the SCR rating will be displayed. See appendix for definitions and formulas.



# NPS/RIP Route ID Report

(Numerical By Route #)

Shading Color Key:

Red text denotes  
approx. mileage

White = Paved Routes, ARAN Driven

Yellow = Unpaved Routes, ARAN not Driven

Blue = All Paved Parking Areas

Grey = Paved Routes, ARAN not Driven

Red =

Green = All Unpaved Parking Areas

Black = Paved State, Local or Private non-NPS Routes, ARAN Driven

Purple =

## BICY

### Big Cypress National Preserve

Rte. #	FMSS Asset #	Route Name	Route Description		Paved Miles	Un-Paved Miles	Rte. Lgth	Func. Class	Rte. Lanes	Manual Rated SQ/FT	Surf. Type
			From	To							
0010		HIGHWAY 41	From East Park Boundary	To West Park Boundary	36.37	0.00	36.37	1	2	0	AS
0100	00002684	DONA DRIVE	From Route 0010	To End of Pavement	0.62	0.50	1.12	2	2	0	AS
0101	00002907	MONUMENT LAKE DRIVE	From Route 0010	To End of Pavement then Road continues as unpaved to End of Loop	0.08	1.00	1.08	2	2	0	AS
0102	00002910	LOOP ROAD	From Park Boundary	To End of Loop at Route 0010	5.18	15.24	20.42	2	2	0	OC
0103	16736	MIDWAY CAMPGROUND ROAD	From Route 0010	To Route 0010	0.10	0.39	0.49	2	2	0	AS
0104	00002909	SEAGRAPE DRIVE	From Route 0010	To End of Loop	0.60	0.00	0.60	2	2	0	AS
0105	2918	Mount Ochopee, unpaved	From Route	To End	0.00	1.50	1.50	2	2	0	GR
0106	2921	Pine Oaks Road	From County Route 841	To End	0.00	1.00	1.00	2	2	0	GR
0107	12422	Burns Lake Road	From Route 0010	Through Campground	0.00	2.40	2.40	2	2	0	GR
0200	2904	Bass Lake Road	From Route 0010	To End	0.00	2.00	2.00	4	2	0	GR
0400	00002911	SATINWOOD DRIVE	From Route 0010	To End	0.43	0.00	0.43	5	2	0	AS
0401	00002908	MAHOGANY DRIVE	From Route 0400	To End	0.23	0.00	0.23	5	2	0	AS
0402	2919	Ochopee Maint. Facility Road, unpaved	From Route 0010	To End	0.00	2.00	2.00	5	2	0	GR
0404	2922	Loop Road Station Rd., (Golightly)	From Route 0102	To End	0.00	0.75	0.75	2	2	0	GR
0405	2920	Oasis Road, unpaved	From Route 0010	To End	0.00	2.00	2.00	5	2	0	GR
0703	2916	Jim Dill Road, unpaved	From	To	0.00	3.00	3.00	ZZ		0	GR
0710	12417	Big Cypress ORV Trail System	From	To	0.00	1.00	1.00	ZZ		0	GR
0900A		HEADQUARTERS PARKING	From Route 0400	To Parking	0.00	0.00	0.00	9		38,818	AS
0900B		HEADQUARTERS PARKING (UNPAVED)	From Route 0900A	To Parking	0.00	0.00	0.00	9		18,056	GR
0901	16740	HP WILLIAMS WAYSIDE	From Route 0010	To Parking	0.00	0.00	0.00	9		15,006	AS
0902A	16741	KIRBY STORTER WAYSIDE A	From Route 0010	To Parking	0.00	0.00	0.00	9		13,506	AS
0902B	16742	KIRBY STORTER WAYSIDE B	From Route 0010	To Parking	0.00	0.00	0.00	9		7,538	AS
0903	16743	MONROE STATION PARKING	From Route 0010	To Parking	0.00	0.00	0.00	9		32,511	AS
0904	16744	OASIS VISITOR CENTER PARKING	From Route 0010	To Parking	0.00	0.00	0.00	9		40,124	AS
<b>Totals:</b>					43.61	32.78	76.39			165,560	

# NPS/RIP Route ID Report

(Numerical By Route #)

Shading Color Key:

Red text denotes approx. mileage

White = Paved Routes, ARAN Driven	Yellow = Unpaved Routes, ARAN not Driven	Blue = All Paved Parking Areas
Grey = Paved Routes, ARAN not Driven	Red =	Green = All Unpaved Parking Areas
Black = Paved State, Local or Private non-NPS Routes, ARAN Driven	Purple =	

### General Park Road Functional Classification Table

- Class 1 Principal Park Road/Rural Parkway (Public Roads) - Roads which constitute the main access route, circulatory tour, or thoroughfare for park visitors. Route Numbers 1 - 99. Note: Rural parkways (e.g. Natchez Trace) are numbered 1 - 9. State Routes Inventoried for Park. Route Numbers 5000-5999
- Class 2 Connector Park Road (Public Roads) - Roads which provide access within a park to areas of scenic, scientific, recreational or cultural interest, such as overlooks, campgrounds, etc. Route Numbers 100-199.
- Class 3 Special Purpose Park Road (Public Roads) - Roads which provide circulation within public areas, such as campgrounds, picnic areas, visitor center complexes, concessionaire facilities, etc. These roads generally serve low-speed traffic and are often designed for one-way circulation. Route Numbers 200-299.
- Class 4 Primitive Park Roads (Public Roads) - Roads which provide circulation through remote areas and/or access to primitive campgrounds and undeveloped areas. These roads frequently have no minimum design standards and their use may be limited to specially equipped vehicles. Route Numbers 200-299.  
Note: Functional Classes 3 and 4 have the same route numbers because, historically, they were numbered similarly.
- Class 5 Administrative Access Road (Administrative Roads) - All public roads intended for access to administrative developments or structures such as park offices, employee quarters, or utility areas. Route Numbers 400-499.
- Class 6 Restricted Road (Administrative Roads) - All roads normally closed to the public, including patrol roads, truck trails, and other similar roads. Route Numbers 400-499.  
Note: Functional Classes 5 and 6 have the same route numbers because historically they were numbered similarly and often there is little distinction between these routes. For example, because utility areas and employee housing are often closed to the public, this restriction would result in classification of FC 6 rather than FC 5.
- Class 7 Urban Parkway (Urban Parkways and City Streets) - These facilities serve high volumes of park and non-park related traffic and are restricted, limited-access facilities in an urban area. This category of roads primarily encompasses the major parkways which serve as gateways to our nation's capital. Other major park roads or portions thereof, however, may be included in this category. Route Numbers 1-9.
- Class 8 City Streets (Urban Parkways and City Streets) - City streets are usually extensions of the adjoining street system that are owned and maintained by the National Park Service. The construction and/or reconstruction should conform with accepted local engineering practice and local conditions. Route Numbers 600-699.
- Class 9 Boat Ramp - (Public and Administrative) Route Numbers 800-899.  
Parking Area - (Public and Administrative) Route Numbers 900-1999.

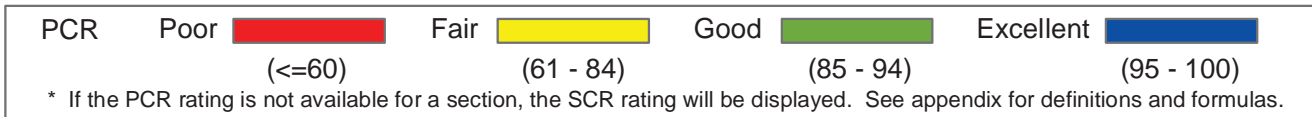
### Surface Type Abbreviations:

- AS - Asphaltic Concrete Pavement
- CO - Portland Cement Concrete Pavement
- NC - New Chip Seal Pavement (Under 5 Years)
- OC - Old Chip Seal Pavement (5 Years and Greater)
- SS - Slurry Seal Pavement
- GR - Gravel Road Bed
- BR - Brick or Pavers Road Bed
- CB - Cobble Stone Road Bed
- SA - Sand Road Bed
- DT - Dirt or Native Material Road Bed
- OT - Other Materials Road Bed

\*\*\*\*\*  
A park road system contains those roads within or giving access to a park or other unit of the NPS which are administered by the NPS, or by the Service in cooperation with other agencies. The assignment of a functional classification (FC) to a park road is not based on traffic volumes or design speed, but on the intended use or function of that road or route.

The historic route numbering system also included a 300 number series for interpretive roads, and a 500 series for one-way roads. There are approximately 250 roads nationwide which are designated by the 300 and 500 series. The numbers for these roads will be maintained for reporting consistency. However, since these interpretive and one-way routes are not as clearly tied to a specific functional class, the 300 and 500 series will be discontinued for future use.

ZZ Functional Class Routes were added from FMSS Database. Final Route Number and Functional Class will be established during Park visit for Cycle 4 data collection.



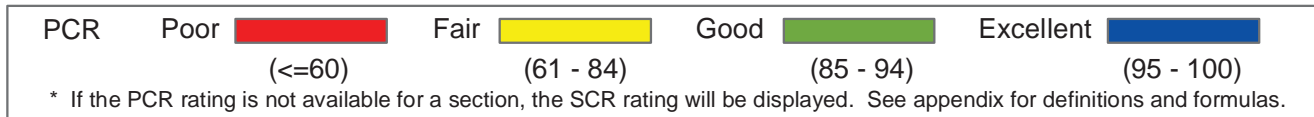
**Southeast Region**  
**BICY : Big Cypress National Preserve**

**ROUTE: 0010 HIGHWAY 41** **TOTAL LENGTH: 36.37 Miles**

Section Number	0	1	2	3	4
Section Length (mi)	1.00	1.00	1.00	1.00	1.00
AADT	**				
SADT	**				
ADT Date	**				
<b>Cross Section Information</b>					
Number of Lanes	2	2	2	2	2
Paved Width (ft)	24	24	24	24	23
Lane Width (ft)	12	12	12	12	12
Shoulder Width (ft)	4	4	4	4	5
<b>Roadway Condition Information</b>					
PCR (Pavement Condition Rating)	85	86	84	83	80
RCI (Roughness Condition Index)	99	99	99	99	99
SCR (Surface Condition Rating)	76	76	74	73	68
Alligator Cracking Index	100	100	100	100	99
Rutting Index	76	76	74	73	69
Patching Index	100	100	100	100	100
Transverse Cracking Index	100	100	100	100	99
Longitudinal Cracking Index	100	100	100	100	99
Shoulder Condition Rating	POOR	POOR	POOR	POOR	POOR
Drainage Condition Rating	POOR	POOR	POOR	POOR	POOR

**ROUTE: 0010 HIGHWAY 41**

\* NC designates data not collected N/A designates not applicable  
 \*\* See website for traffic data: <http://www.efl.fhwa.dot.gov/nps/index.htm>



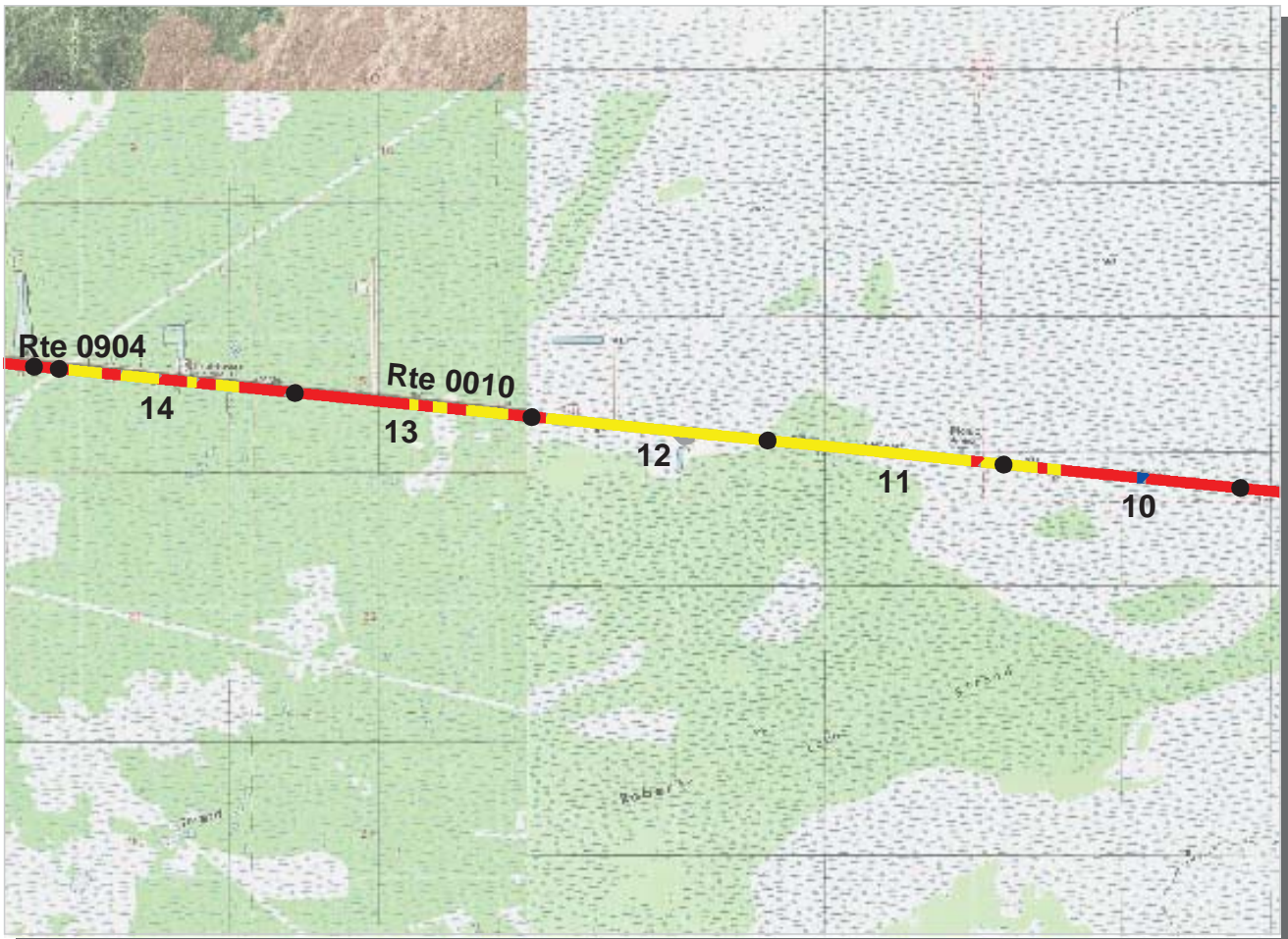
**Southeast Region**  
**BICY : Big Cypress National Preserve**

**ROUTE: 0010 HIGHWAY 41** **TOTAL LENGTH: 36.37 Miles**

Section Number	5	6	7	8	9
Section Length (mi)	1.00	1.00	1.00	1.00	1.00
AADT	**				
SADT	**				
ADT Date	**				
<b>Cross Section Information</b>					
Number of Lanes	2	2	2	2	2
Paved Width (ft)	22	22	24	23	22
Lane Width (ft)	11	11	12	12	11
Shoulder Width (ft)	10	11	10	10	11
<b>Roadway Condition Information</b>					
PCR (Pavement Condition Rating)	79	49	48	47	47
RCI (Roughness Condition Index)	99	61	62	67	62
SCR (Surface Condition Rating)	65	41	37	32	35
Alligator Cracking Index	99	100	97	96	99
Rutting Index	69	42	41	43	37
Patching Index	100	99	99	99	100
Transverse Cracking Index	99	99	98	94	98
Longitudinal Cracking Index	97	99	99	97	99
Shoulder Condition Rating	POOR	POOR	POOR	POOR	POOR
Drainage Condition Rating	POOR	POOR	POOR	POOR	POOR

**ROUTE: 0010 HIGHWAY 41**

\* NC designates data not collected N/A designates not applicable  
 \*\* See website for traffic data: <http://www.efl.fhwa.dot.gov/nps/index.htm>



PCR	Poor	<span style="display:inline-block; width:20px; height:10px; background-color:red;"></span>	Fair	<span style="display:inline-block; width:20px; height:10px; background-color:yellow;"></span>	Good	<span style="display:inline-block; width:20px; height:10px; background-color:green;"></span>	Excellent	<span style="display:inline-block; width:20px; height:10px; background-color:blue;"></span>
		(≤60)		(61 - 84)		(85 - 94)		(95 - 100)

\* If the PCR rating is not available for a section, the SCR rating will be displayed. See appendix for definitions and formulas.

**Southeast Region**  
**BICY : Big Cypress National Preserve**

**ROUTE: 0010 HIGHWAY 41**

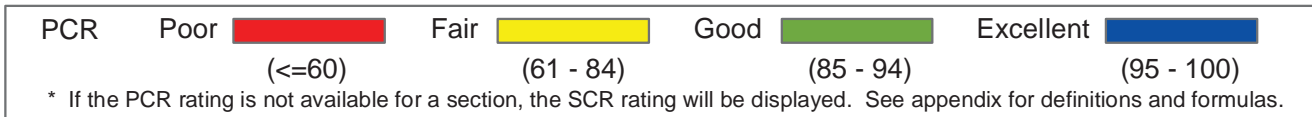
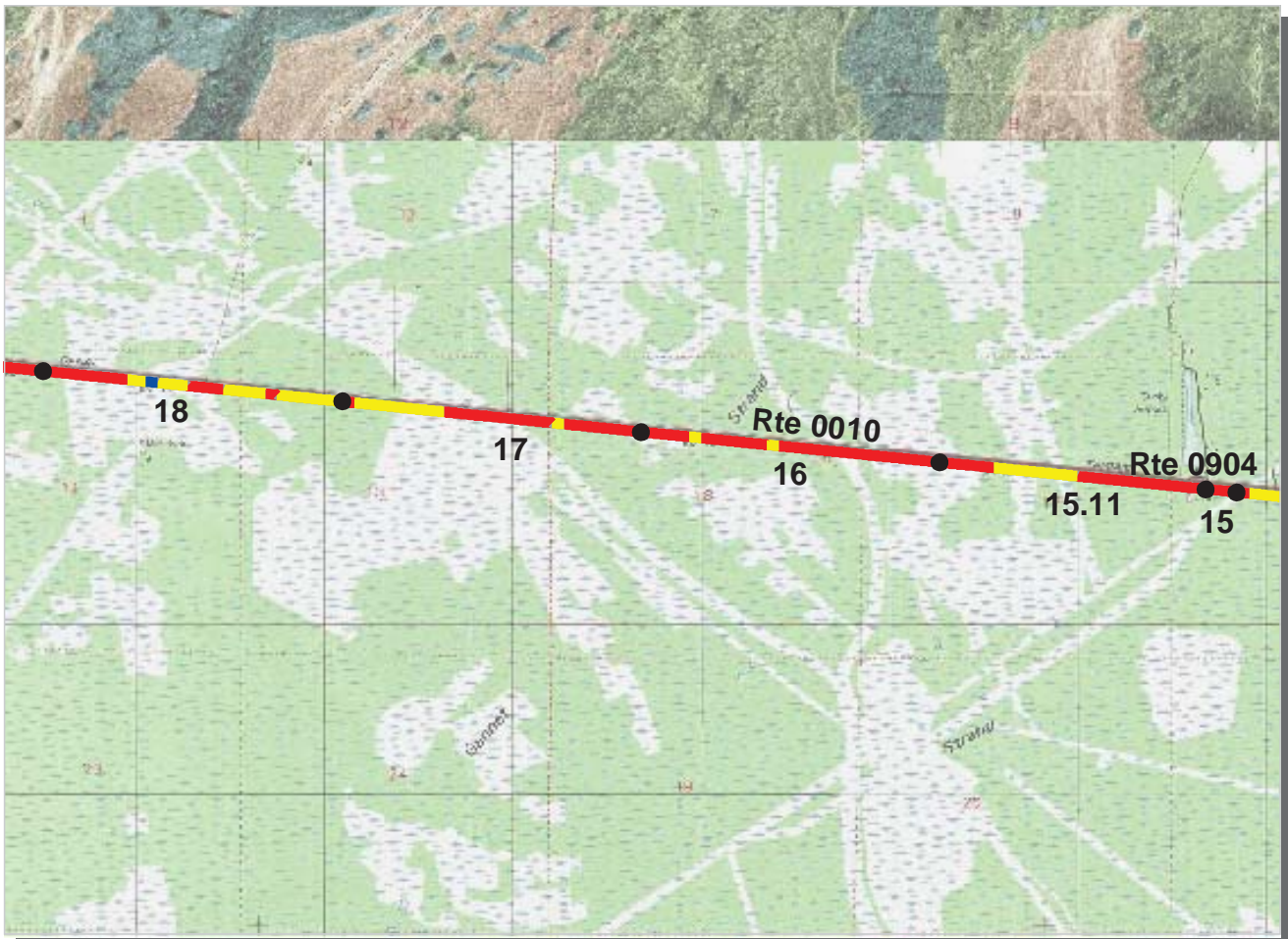
**TOTAL LENGTH: 36.37 Miles**

Section Number	10	11	12	13	14
Section Length (mi)	1.00	1.00	1.00	1.00	1.00
AADT	**				
SADT	**				
ADT Date	**				
<b>Cross Section Information</b>					
Number of Lanes	2	2	2	2	2
Paved Width (ft)	23	23	23	23	23
Lane Width (ft)	12	12	12	11	12
Shoulder Width (ft)	9	11	10	9	10
<b>Roadway Condition Information</b>					
PCR (Pavement Condition Rating)	54	69	66	59	57
RCI (Roughness Condition Index)	75	89	88	73	74
SCR (Surface Condition Rating)	40	56	51	48	45
Alligator Cracking Index	99	99	99	100	100
Rutting Index	41	56	52	48	45
Patching Index	100	100	100	100	100
Transverse Cracking Index	99	99	99	99	99
Longitudinal Cracking Index	99	99	99	99	99
Shoulder Condition Rating	POOR	POOR	POOR	POOR	POOR
Drainage Condition Rating	POOR	POOR	POOR	POOR	POOR

**ROUTE: 0010 HIGHWAY 41**

\* NC designates data not collected N/A designates not applicable  
 \*\* See website for traffic data: <http://www.efl.fhwa.dot.gov/nps/index.htm>





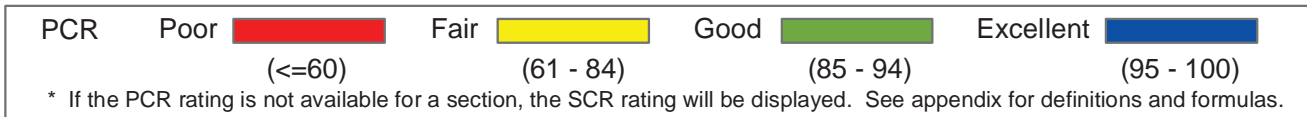
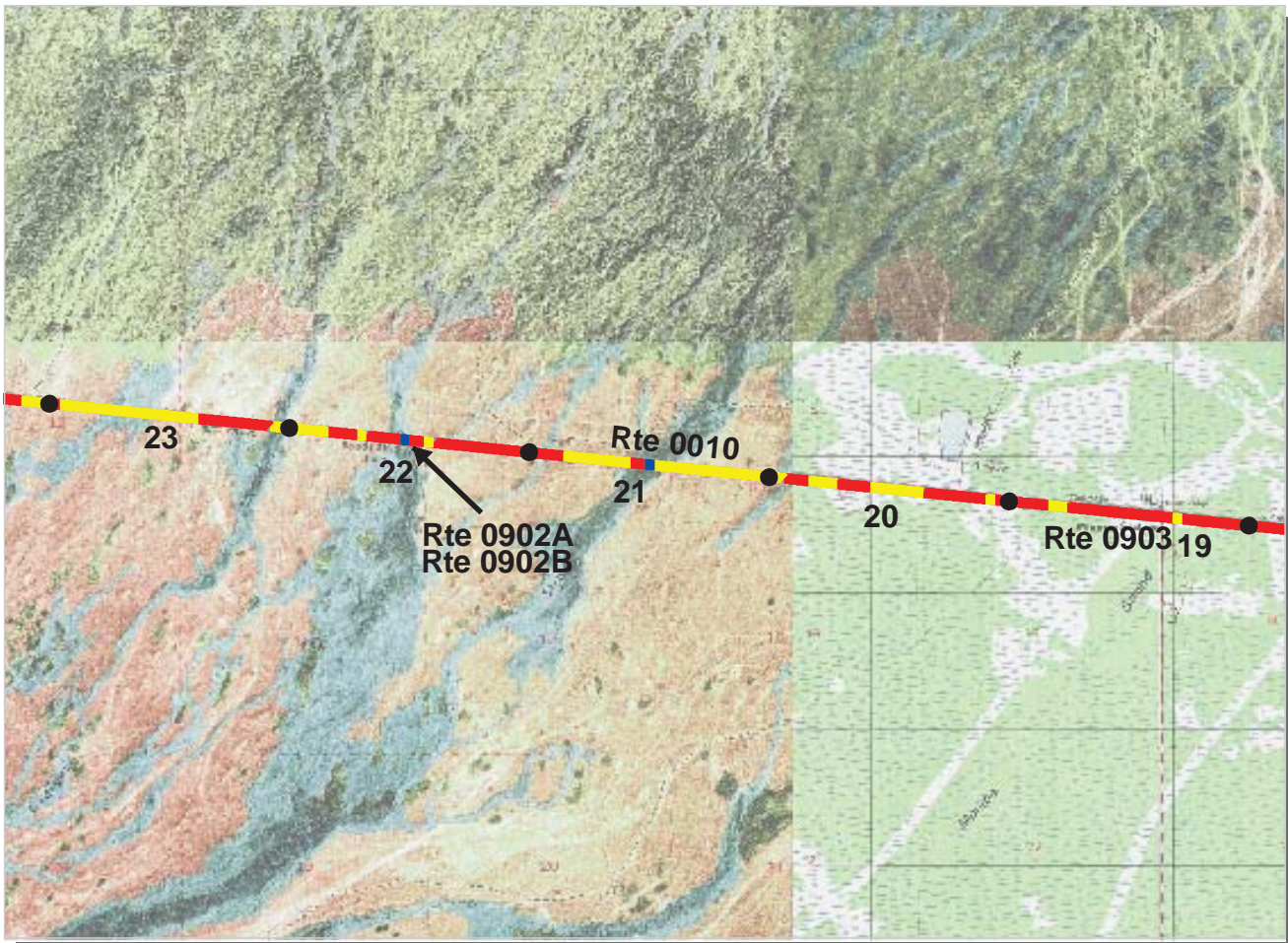
**Southeast Region**  
**BICY : Big Cypress National Preserve**

**ROUTE: 0010 HIGHWAY 41** **TOTAL LENGTH: 36.37 Miles**

Section Number	15	15.11	16	17	18
Section Length (mi)	0.11	0.89	1.00	1.00	1.00
AADT	**				
SADT	**				
ADT Date	**				
<b>Cross Section Information</b>					
Number of Lanes	2	2	2	2	2
Paved Width (ft)	23	23	23	23	23
Lane Width (ft)	12	11	11	11	12
Shoulder Width (ft)	11	0	0	9	11
<b>Roadway Condition Information</b>					
PCR (Pavement Condition Rating)	59	56	48	51	61
RCI (Roughness Condition Index)	80	81	87	83	91
SCR (Surface Condition Rating)	45	39	22	31	41
Alligator Cracking Index	100	99	94	98	98
Rutting Index	45	42	39	43	48
Patching Index	100	99	100	100	100
Transverse Cracking Index	100	98	95	96	97
Longitudinal Cracking Index	100	98	90	92	96
Shoulder Condition Rating	POOR	N/A	N/A	POOR	POOR
Drainage Condition Rating	POOR	POOR	POOR	POOR	POOR

**ROUTE: 0010 HIGHWAY 41**

\* NC designates data not collected N/A designates not applicable  
 \*\* See website for traffic data: <http://www.efl.fhwa.dot.gov/nps/index.htm>



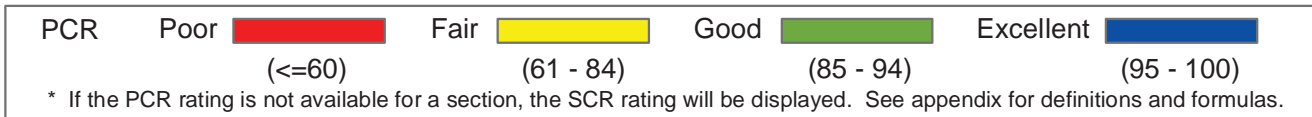
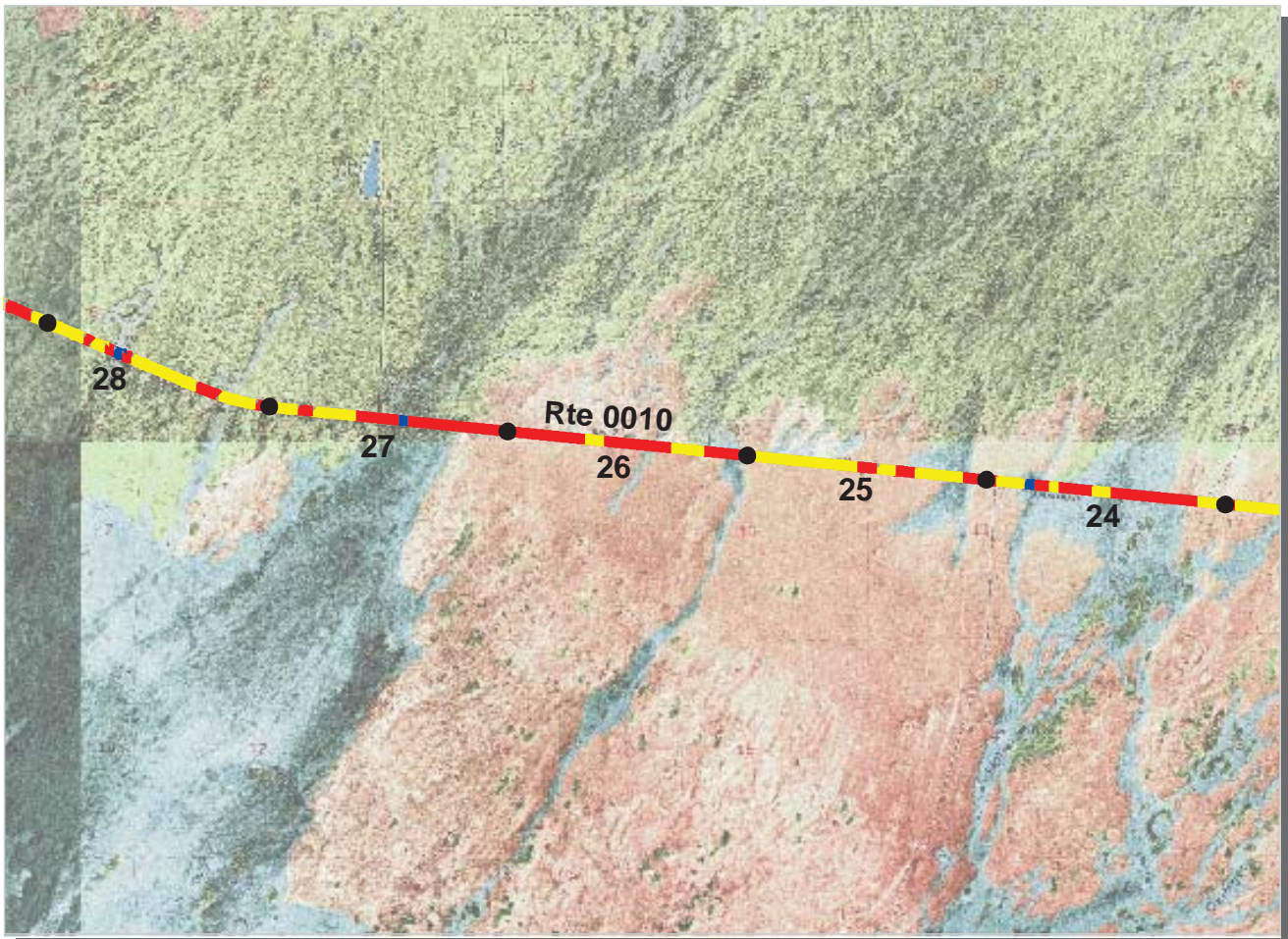
**Southeast Region**  
**BICY : Big Cypress National Preserve**

**ROUTE: 0010 HIGHWAY 41** **TOTAL LENGTH: 36.37 Miles**

Section Number	19	20	21	22	23
Section Length (mi)	1.00	1.00	1.00	1.00	1.00
AADT	**				
SADT	**				
ADT Date	**				
<b>Cross Section Information</b>					
Number of Lanes	2	2	2	2	2
Paved Width (ft)	23	23	23	23	24
Lane Width (ft)	12	12	12	12	12
Shoulder Width (ft)	10	11	10	10	10
<b>Roadway Condition Information</b>					
PCR (Pavement Condition Rating)	54	52	66	55	58
RCI (Roughness Condition Index)	69	74	89	80	82
SCR (Surface Condition Rating)	44	38	51	39	42
Alligator Cracking Index	97	93	99	97	98
Rutting Index	56	51	54	47	53
Patching Index	96	99	100	99	100
Transverse Cracking Index	95	94	97	96	95
Longitudinal Cracking Index	96	96	99	97	94
Shoulder Condition Rating	POOR	POOR	POOR	POOR	POOR
Drainage Condition Rating	POOR	POOR	POOR	POOR	POOR

**ROUTE: 0010 HIGHWAY 41**

\* NC designates data not collected N/A designates not applicable  
 \*\* See website for traffic data: <http://www.efl.fhwa.dot.gov/nps/index.htm>



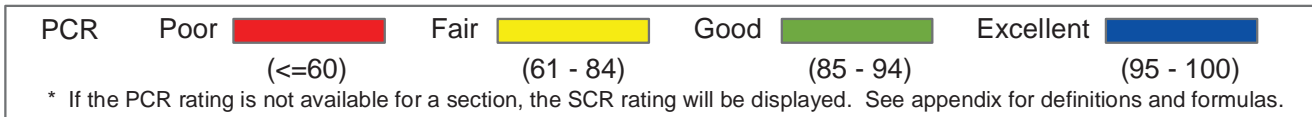
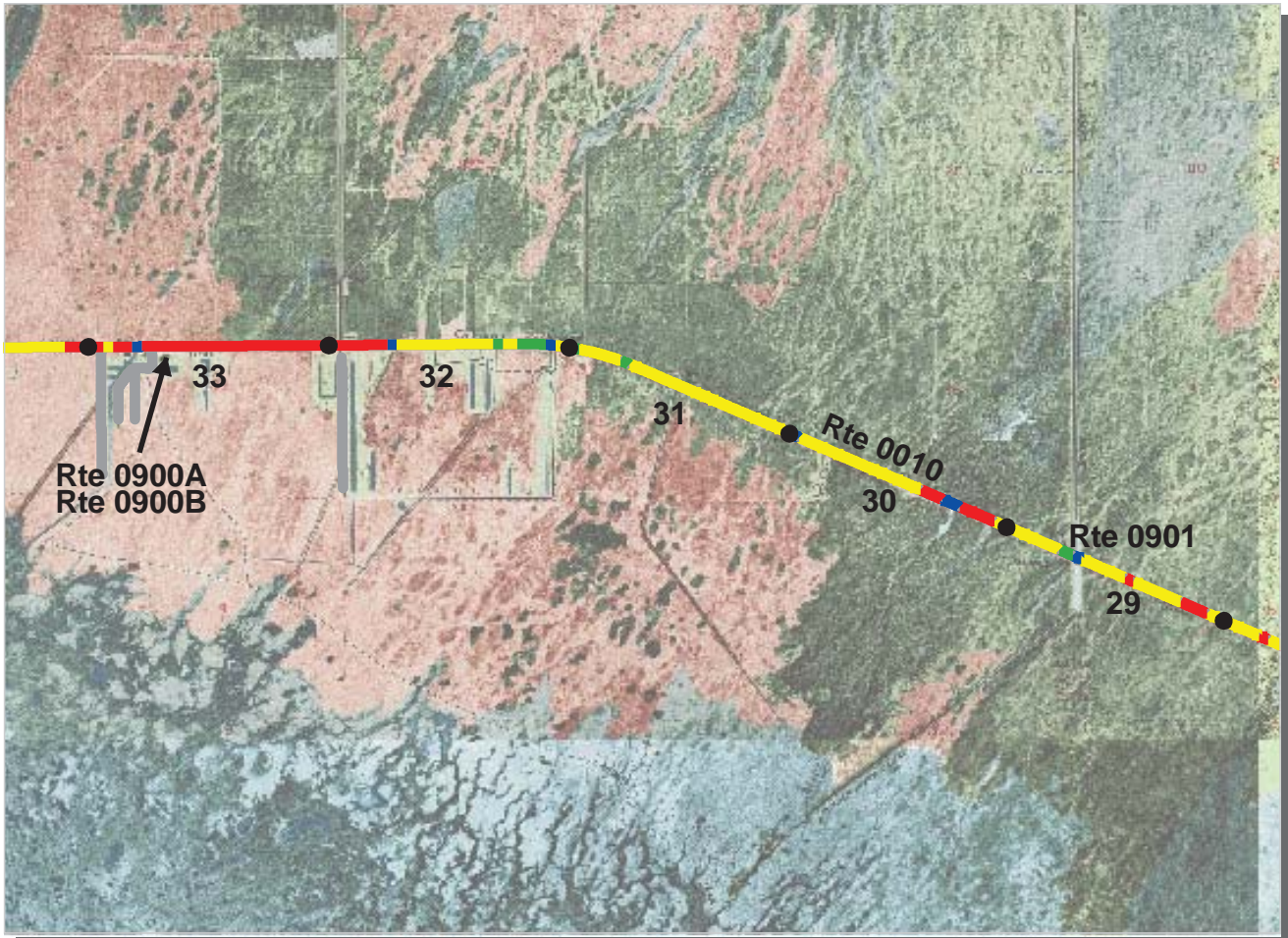
**Southeast Region**  
**BICY : Big Cypress National Preserve**

**ROUTE: 0010 HIGHWAY 41** **TOTAL LENGTH: 36.37 Miles**

Section Number	24	25	26	27	28
Section Length (mi)	1.00	1.00	1.00	1.00	1.00
AADT	**				
SADT	**				
ADT Date	**				
<b>Cross Section Information</b>					
Number of Lanes	2	2	2	2	2
Paved Width (ft)	23	23	22	23	23
Lane Width (ft)	11	11	11	12	12
Shoulder Width (ft)	10	11	8	11	11
<b>Roadway Condition Information</b>					
PCR (Pavement Condition Rating)	58	66	51	55	68
RCI (Roughness Condition Index)	81	88	91	92	95
SCR (Surface Condition Rating)	42	50	24	30	49
Alligator Cracking Index	99	99	74	60	89
Rutting Index	47	54	70	70	71
Patching Index	99	99	99	98	99
Transverse Cracking Index	97	97	87	90	91
Longitudinal Cracking Index	98	98	83	92	95
Shoulder Condition Rating	POOR	POOR	POOR	POOR	POOR
Drainage Condition Rating	POOR	POOR	POOR	POOR	POOR

**ROUTE: 0010 HIGHWAY 41**

\* NC designates data not collected N/A designates not applicable  
 \*\* See website for traffic data: <http://www.efl.fhwa.dot.gov/nps/index.htm>



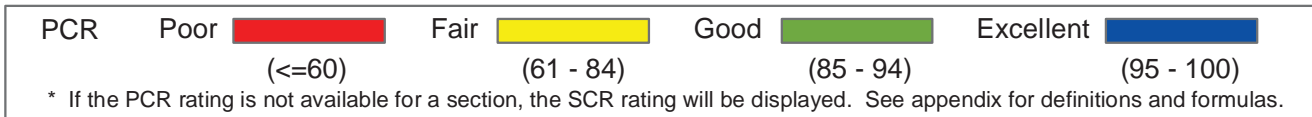
**Southeast Region**  
**BICY : Big Cypress National Preserve**

**ROUTE: 0010 HIGHWAY 41** **TOTAL LENGTH: 36.37 Miles**

Section Number	29	30	31	32	33
Section Length (mi)	1.00	1.00	1.00	1.00	1.00
AADT	**				
SADT	**				
ADT Date	**				
<b>Cross Section Information</b>					
Number of Lanes	2	2	2	2	2
Paved Width (ft)	23	23	23	23	23
Lane Width (ft)	11	12	12	12	11
Shoulder Width (ft)	9	10	12	10	12
<b>Roadway Condition Information</b>					
PCR (Pavement Condition Rating)	69	68	78	71	43
RCI (Roughness Condition Index)	95	89	97	96	98
SCR (Surface Condition Rating)	51	53	66	54	6
Alligator Cracking Index	94	94	99	90	38
Rutting Index	71	71	70	72	66
Patching Index	100	99	100	99	100
Transverse Cracking Index	91	93	98	93	85
Longitudinal Cracking Index	94	94	98	95	89
Shoulder Condition Rating	POOR	POOR	POOR	POOR	POOR
Drainage Condition Rating	POOR	POOR	POOR	POOR	POOR

**ROUTE: 0010 HIGHWAY 41**

\* NC designates data not collected N/A designates not applicable  
 \*\* See website for traffic data: <http://www.efl.fhwa.dot.gov/nps/index.htm>



**Southeast Region**  
**BICY : Big Cypress National Preserve**

**ROUTE: 0010 HIGHWAY 41** **TOTAL LENGTH: 36.37 Miles**

Section Number	34	35	36		
Section Length (mi)	1.00	1.00	0.37		
AADT	**				
SADT	**				
ADT Date	**				
<b>Cross Section Information</b>					
Number of Lanes	2	2	2		
Paved Width (ft)	23	23	24		
Lane Width (ft)	12	12	12		
Shoulder Width (ft)	11	12	11		
<b>Roadway Condition Information</b>					
PCR (Pavement Condition Rating)	66	72	71		
RCI (Roughness Condition Index)	98	98	98		
SCR (Surface Condition Rating)	45	54	53		
Alligator Cracking Index	89	93	85		
Rutting Index	72	71	72		
Patching Index	100	100	100		
Transverse Cracking Index	88	92	94		
Longitudinal Cracking Index	92	96	97		
Shoulder Condition Rating	POOR	POOR	POOR		
Drainage Condition Rating	POOR	POOR	POOR		

**ROUTE: 0010 HIGHWAY 41**

\* NC designates data not collected N/A designates not applicable  
 \*\* See website for traffic data: <http://www.efl.fhwa.dot.gov/nps/index.htm>



PCR    Poor ■    Fair ■    Good ■    Excellent ■  
          (<=60)                    (61 - 84)                    (85 - 94)                    (95 - 100)

\* If the PCR rating is not available for a section, the SCR rating will be displayed. See appendix for definitions and formulas.

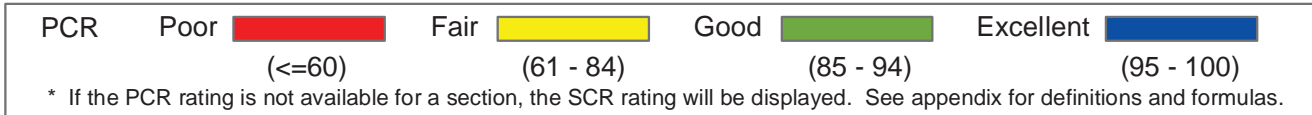
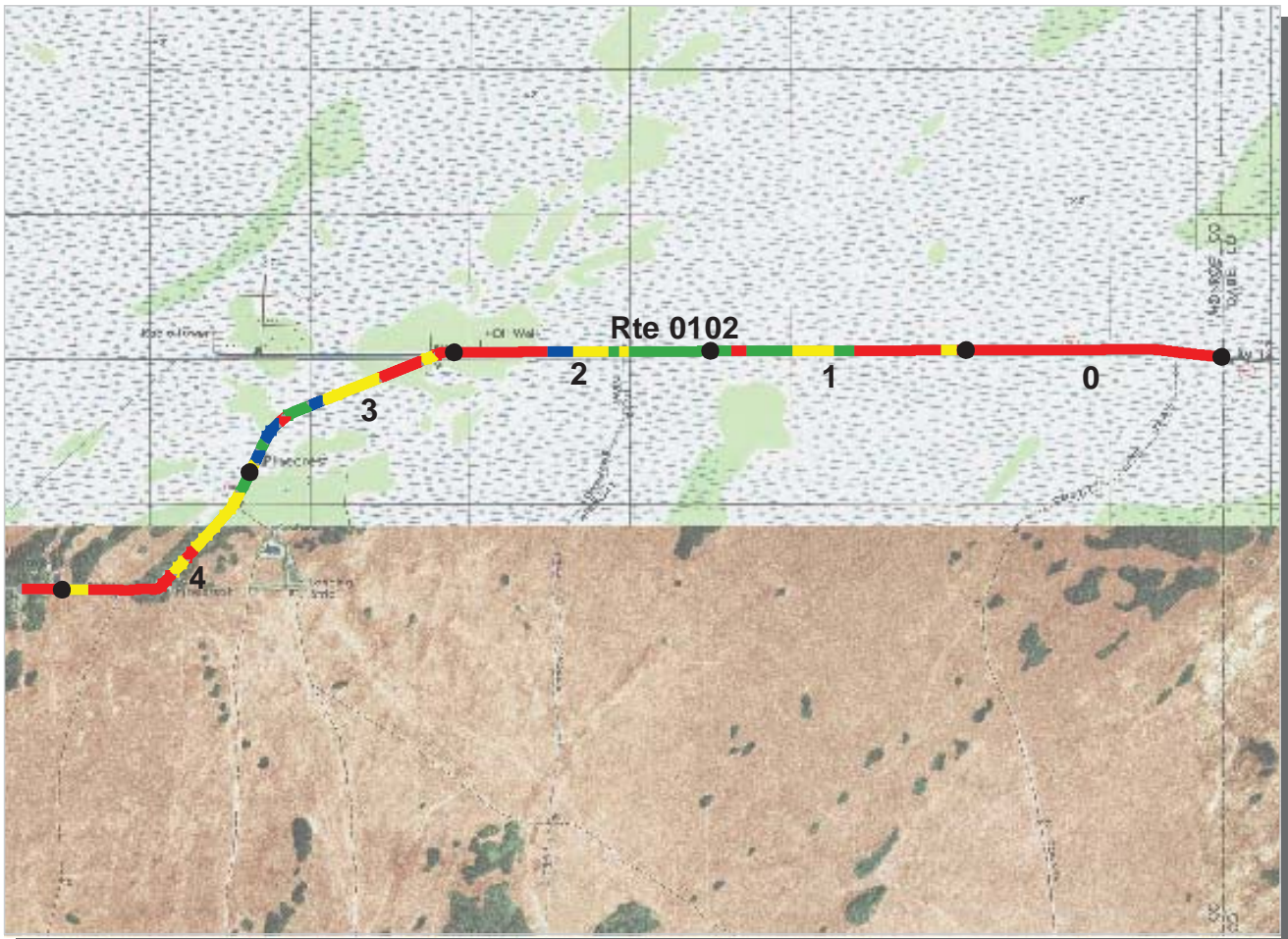
**Southeast Region**  
**BICY : Big Cypress National Preserve**

**ROUTE: 0100 DONA DRIVE** **TOTAL LENGTH: 0.62 Miles**

Section Number	0				
Section Length (mi)	0.62				
AADT	**				
SADT	**				
ADT Date	**				
<b>Cross Section Information</b>					
Number of Lanes	2				
Paved Width (ft)	18				
Lane Width (ft)	9				
Shoulder Width (ft)	0				
<b>Roadway Condition Information</b>					
PCR (Pavement Condition Rating)	58				
RCI (Roughness Condition Index)	88				
SCR (Surface Condition Rating)	41				
Alligator Cracking Index	78				
Rutting Index	67				
Patching Index	99				
Transverse Cracking Index	94				
Longitudinal Cracking Index	95				
Shoulder Condition Rating	N/A				
Drainage Condition Rating	GOOD				

**ROUTE: 0100 DONA DRIVE**

\* NC designates data not collected    N/A designates not applicable  
 \*\* See website for traffic data: <http://www.efl.fhwa.dot.gov/nps/index.htm>



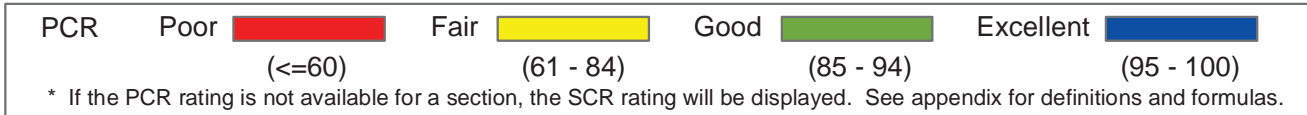
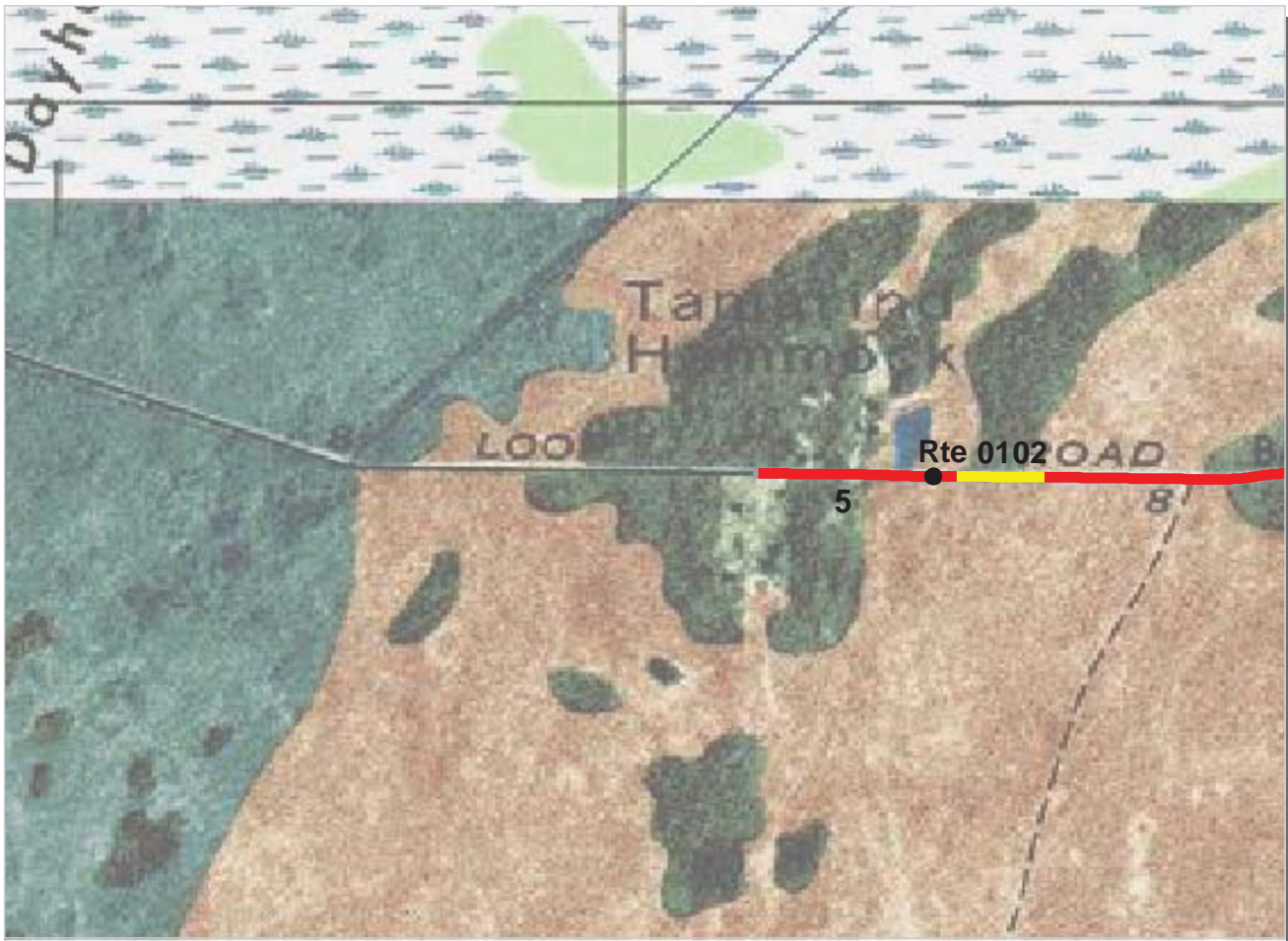
**Southeast Region**  
**BICY : Big Cypress National Preserve**

**ROUTE: 0102 LOOP ROAD** **TOTAL LENGTH: 5.18 Miles**

Section Number	0	1	2	3	4
Section Length (mi)	1.00	1.00	1.00	1.00	1.00
AADT	**				
SADT	**				
ADT Date	**				
<b>Cross Section Information</b>					
Number of Lanes	2	2	2	2	2
Paved Width (ft)	17	17	17	17	16
Lane Width (ft)	8	8	9	8	8
Shoulder Width (ft)	0	0	0	6	4
<b>Roadway Condition Information</b>					
PCR (Pavement Condition Rating)	25	62	66	72	59
RCI (Roughness Condition Index)	51	65	64	66	58
SCR (Surface Condition Rating)	11	60	68	76	62
Alligator Cracking Index	85	89	96	95	99
Rutting Index	44	79	77	83	68
Patching Index	71	89	93	97	95
Transverse Cracking Index	97	99	99	99	99
Longitudinal Cracking Index	98	98	98	99	99
Shoulder Condition Rating	N/A	N/A	N/A	GOOD	GOOD
Drainage Condition Rating	POOR	POOR	POOR	POOR	POOR

\* NC designates data not collected N/A designates not applicable  
 \*\* See website for traffic data: <http://www.efl.fhwa.dot.gov/nps/index.htm>  
 \*\*\* see the MRR page for section of road that could not be ARANed

**ROUTE: 0102 LOOP ROAD**



**Southeast Region**  
**BICY : Big Cypress National Preserve**

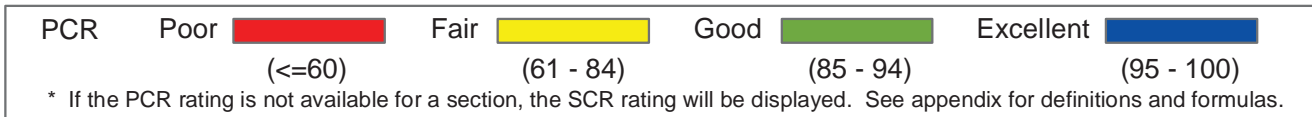
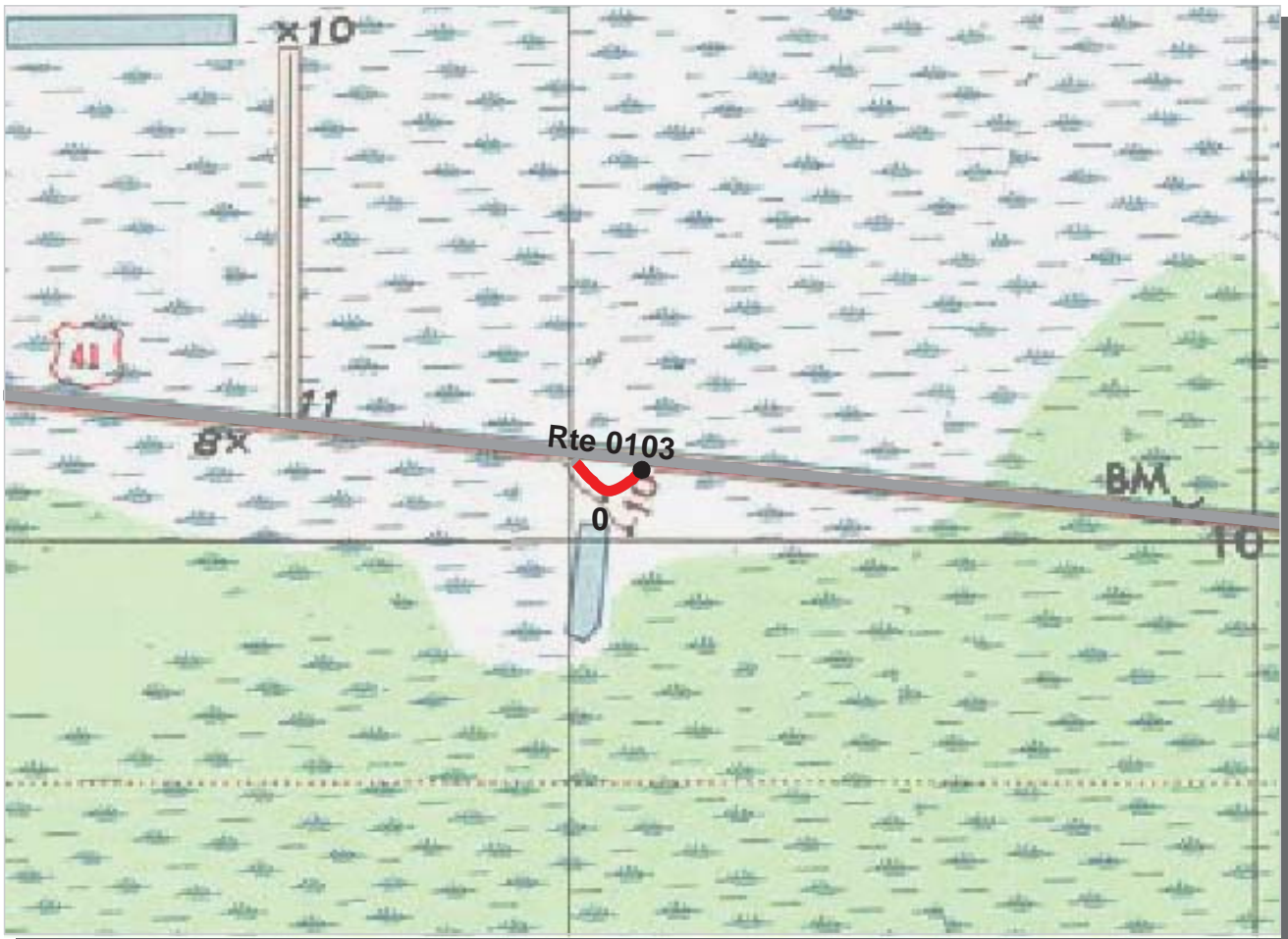
**ROUTE: 0102 LOOP ROAD** **TOTAL LENGTH: 5.18 Miles**

Section Number	5				
Section Length (mi)	0.18				
ADT	**				
SADT	**				
ADT Date	**				
<b>Cross Section Information</b>					
Number of Lanes	2				
Paved Width (ft)	17				
Lane Width (ft)	8				
Shoulder Width (ft)	0				
<b>Roadway Condition Information</b>					
PCR (Pavement Condition Rating)	43				
RCI (Roughness Condition Index)	40				
SCR (Surface Condition Rating)	45				
Alligator Cracking Index	99				
Rutting Index	49				
Patching Index	97				
Transverse Cracking Index	99				
Longitudinal Cracking Index	99				
Shoulder Condition Rating	N/A				
Drainage Condition Rating	POOR				

**ROUTE: 0102 LOOP ROAD**

\* NC designates data not collected N/A designates not applicable  
 \*\* See website for traffic data: <http://www.efl.fhwa.dot.gov/nps/index.htm>  
 \*\*\* see the MRR page for section of road that could not be ARANed





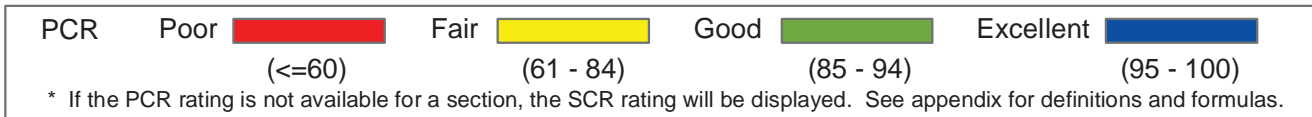
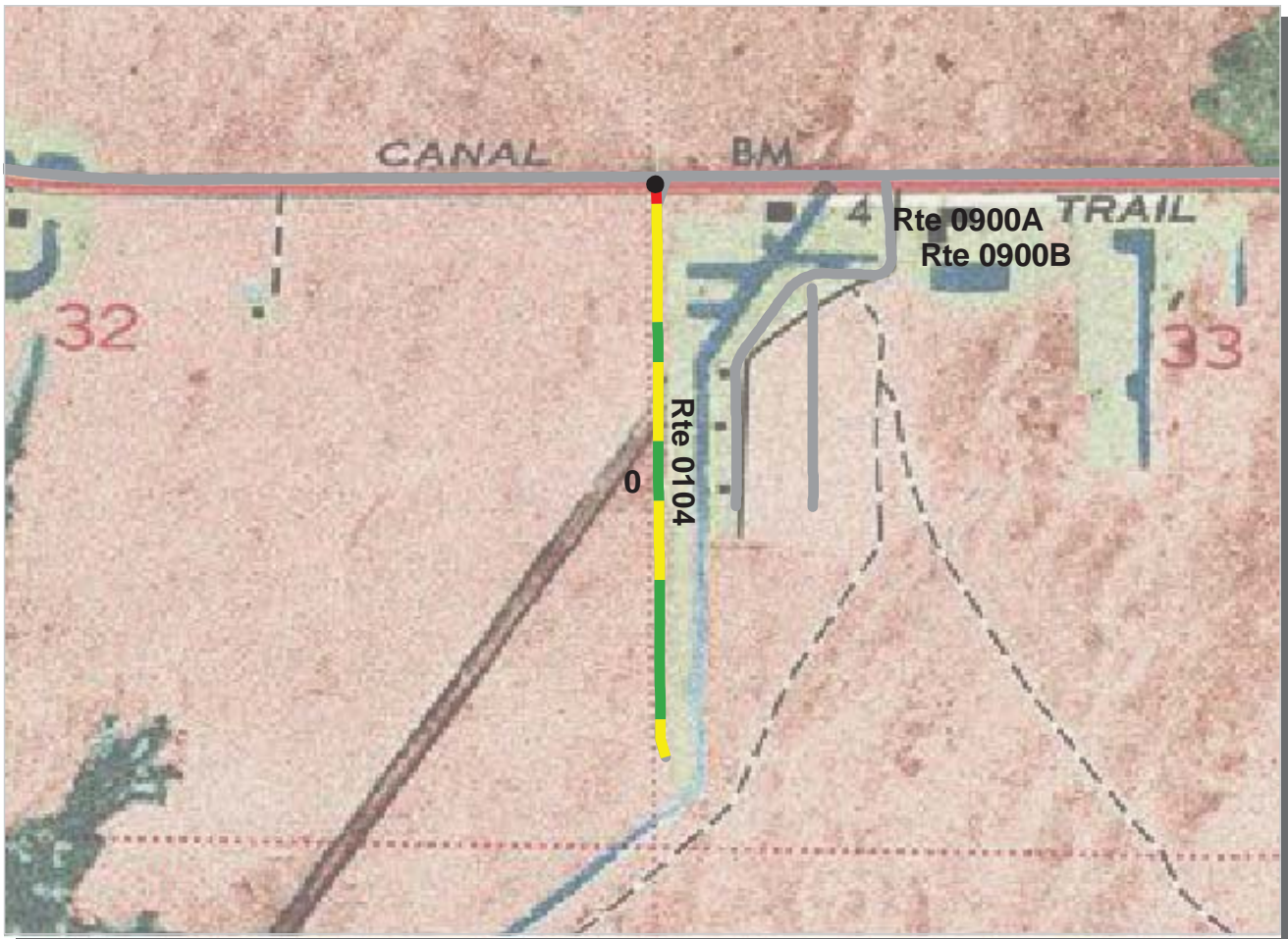
**Southeast Region**  
**BICY : Big Cypress National Preserve**

**ROUTE: 0103 MIDWAY CAMPGROUND ROAD** **TOTAL LENGTH: 0.10 Miles**

Section Number	0				
Section Length (mi)	0.10				
AADT	**				
SADT	**				
ADT Date	**				
<b>Cross Section Information</b>					
Number of Lanes	2				
Paved Width (ft)	17				
Lane Width (ft)	8				
Shoulder Width (ft)	0				
<b>Roadway Condition Information</b>					
PCR (Pavement Condition Rating)	24				
RCI (Roughness Condition Index)	25				
SCR (Surface Condition Rating)	27				
Alligator Cracking Index	68				
Rutting Index	39				
Patching Index	99				
Transverse Cracking Index	97				
Longitudinal Cracking Index	98				
Shoulder Condition Rating	N/A				
Drainage Condition Rating	POOR				

**ROUTE: 0103 MIDWAY CAMPGROUND ROAD**

\* NC designates data not collected N/A designates not applicable  
 \*\* See website for traffic data: <http://www.efl.fhwa.dot.gov/nps/index.htm>



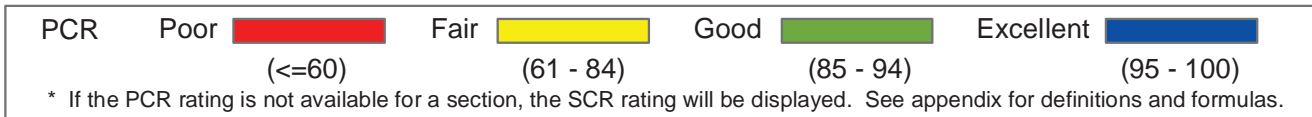
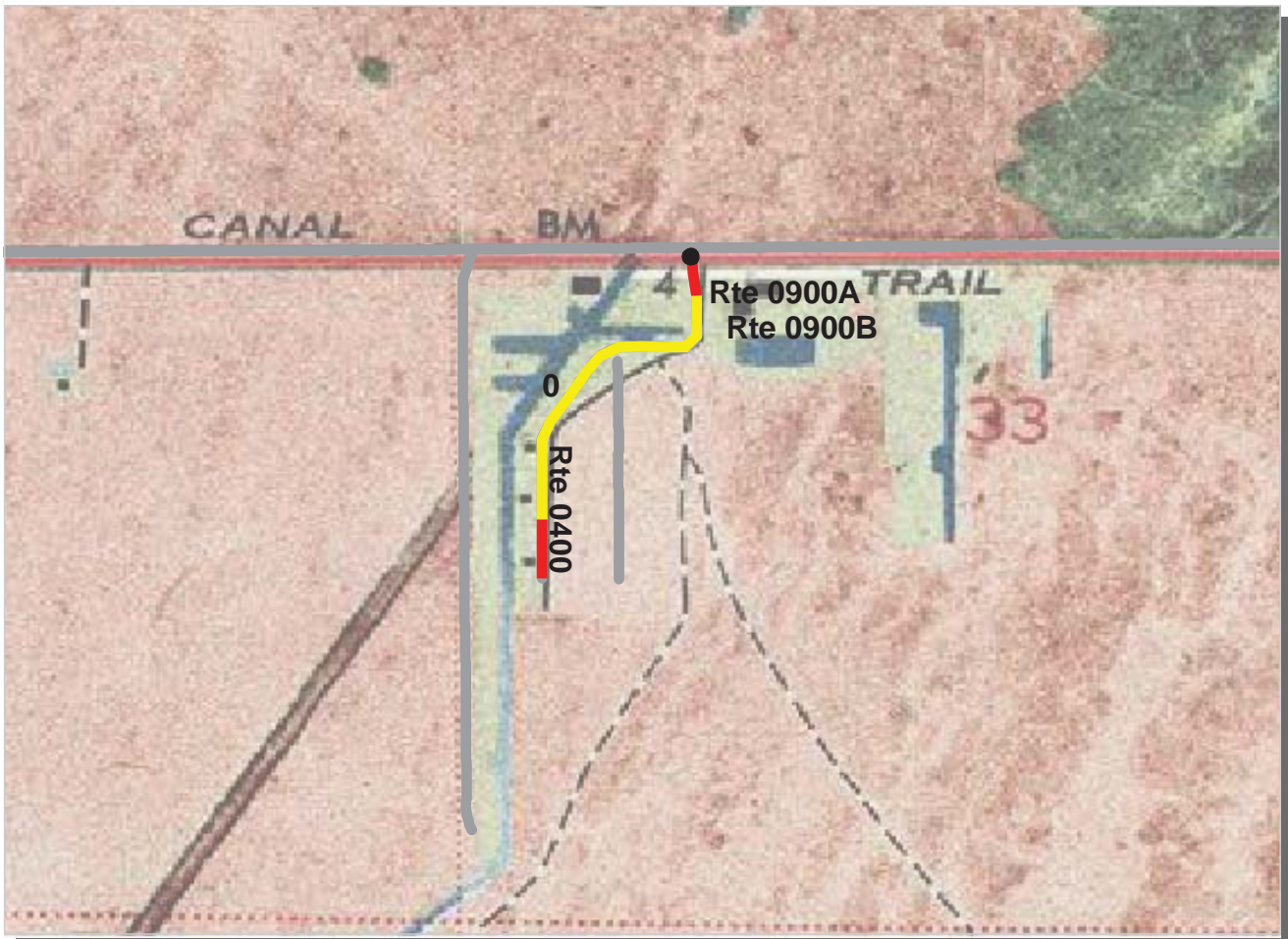
**Southeast Region**  
**BICY : Big Cypress National Preserve**

**ROUTE: 0104 SEAGRAPE DRIVE** **TOTAL LENGTH: 0.60 Miles**

Section Number	0				
Section Length (mi)	0.60				
AADT	**				
SADT	**				
ADT Date	**				
<b>Cross Section Information</b>					
Number of Lanes	2				
Paved Width (ft)	16				
Lane Width (ft)	8				
Shoulder Width (ft)	8				
<b>Roadway Condition Information</b>					
PCR (Pavement Condition Rating)	79				
RCI (Roughness Condition Index)	95				
SCR (Surface Condition Rating)	71				
Alligator Cracking Index	100				
Rutting Index	72				
Patching Index	100				
Transverse Cracking Index	99				
Longitudinal Cracking Index	99				
Shoulder Condition Rating	POOR				
Drainage Condition Rating	POOR				

**ROUTE: 0104 SEAGRAPE DRIVE**

\* NC designates data not collected N/A designates not applicable  
 \*\* See website for traffic data: <http://www.efl.fhwa.dot.gov/nps/index.htm>



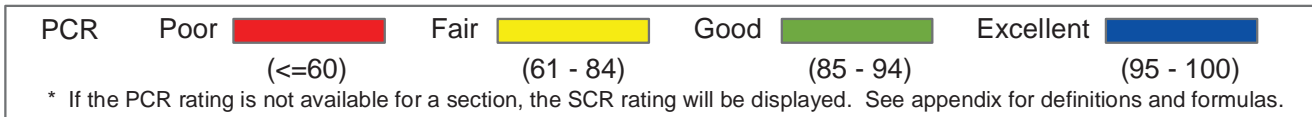
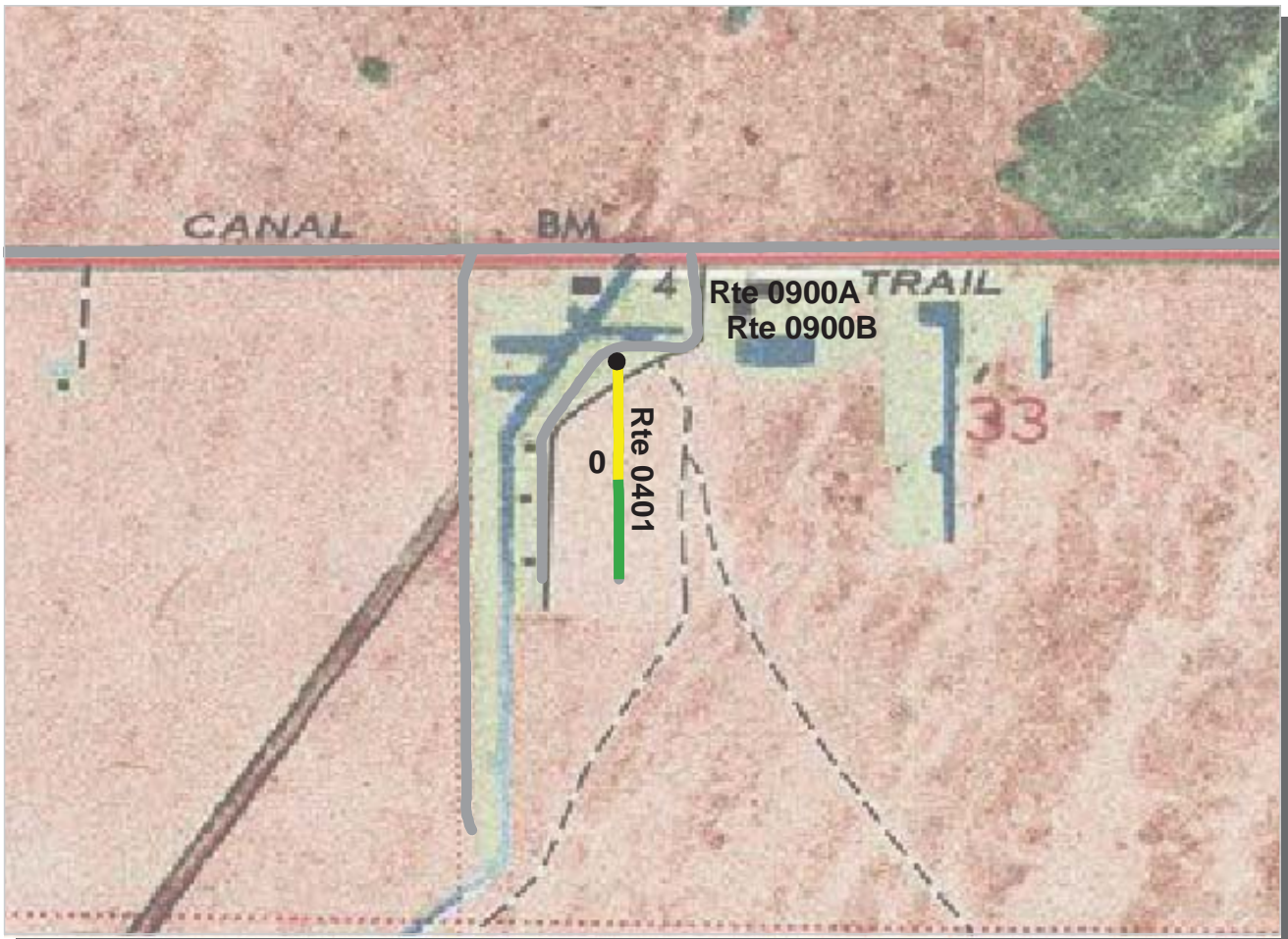
**Southeast Region**  
**BICY : Big Cypress National Preserve**

**ROUTE: 0400 SATINWOOD DRIVE** **TOTAL LENGTH: 0.43 Miles**

Section Number	0				
Section Length (mi)	0.43				
AADT	**				
SADT	**				
ADT Date	**				
<b>Cross Section Information</b>					
Number of Lanes	2				
Paved Width (ft)	22				
Lane Width (ft)	14				
Shoulder Width (ft)	0				
<b>Roadway Condition Information</b>					
PCR (Pavement Condition Rating)	64				
RCI (Roughness Condition Index)	65				
SCR (Surface Condition Rating)	64				
Alligator Cracking Index	100				
Rutting Index	65				
Patching Index	100				
Transverse Cracking Index	99				
Longitudinal Cracking Index	99				
Shoulder Condition Rating	N/A				
Drainage Condition Rating	GOOD				

ROUTE: 0400 SATINWOOD DRIVE

\* NC designates data not collected N/A designates not applicable  
 \*\* See website for traffic data: <http://www.efl.fhwa.dot.gov/nps/index.htm>



**Southeast Region**  
**BICY : Big Cypress National Preserve**

**ROUTE: 0401 MAHOGANY DRIVE** **TOTAL LENGTH: 0.23 Miles**

Section Number	0				
Section Length (mi)	0.23				
AADT	**				
SADT	**				
ADT Date	**				
<b>Cross Section Information</b>					
Number of Lanes	2				
Paved Width (ft)	24				
Lane Width (ft)	15				
Shoulder Width (ft)	6				
<b>Roadway Condition Information</b>					
PCR (Pavement Condition Rating)	80				
RCI (Roughness Condition Index)	77				
SCR (Surface Condition Rating)	83				
Alligator Cracking Index	100				
Rutting Index	84				
Patching Index	99				
Transverse Cracking Index	99				
Longitudinal Cracking Index	99				
Shoulder Condition Rating	GOOD				
Drainage Condition Rating	GOOD				

ROUTE: 0401 MAHOGANY DRIVE

\* NC designates data not collected N/A designates not applicable  
 \*\* See website for traffic data: <http://www.efl.fhwa.dot.gov/nps/index.htm>

# Big Cypress National Preserve

## Route 0102

Loop Road  
From Park Boundary

Route	Length (mi)	Width (ft)	Area (sq ft)	Lane Miles *	Condition / PCR	Surface Type
0102	5.18	0.00	0	0.00	0 / 56	OC

\* Lane miles are based on 11' lane widths

\* see the CRS page for the section of road that was driven with the ARAN



# Big Cypress National Preserve

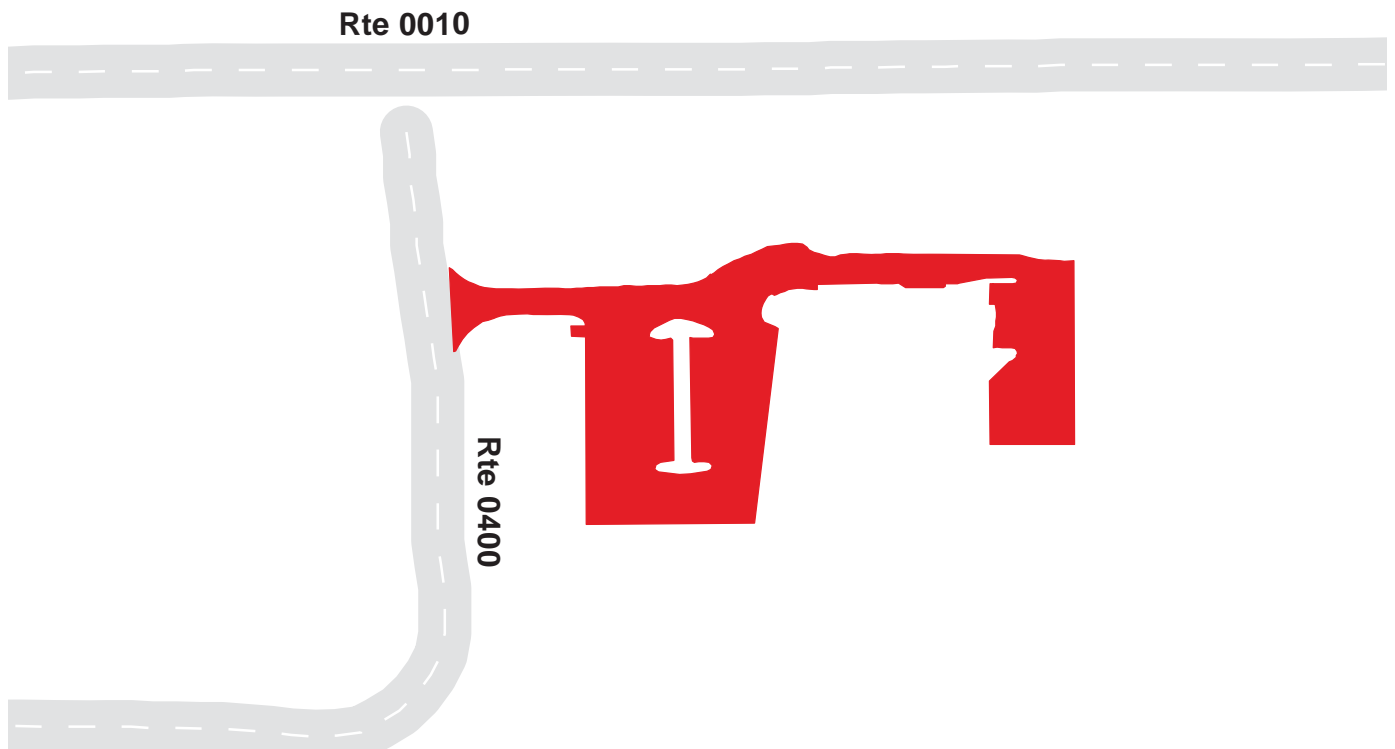
## Route 0900A

### HEADQUARTERS PARKING

From Route 0400

Route	Public / NonPublic	Date Visited	Area (sq ft)	Lane Miles *	Surface Type	Condition / PCR
0900A	NonPublic	6/30/2001	38818	0.67	AS	POOR / 45

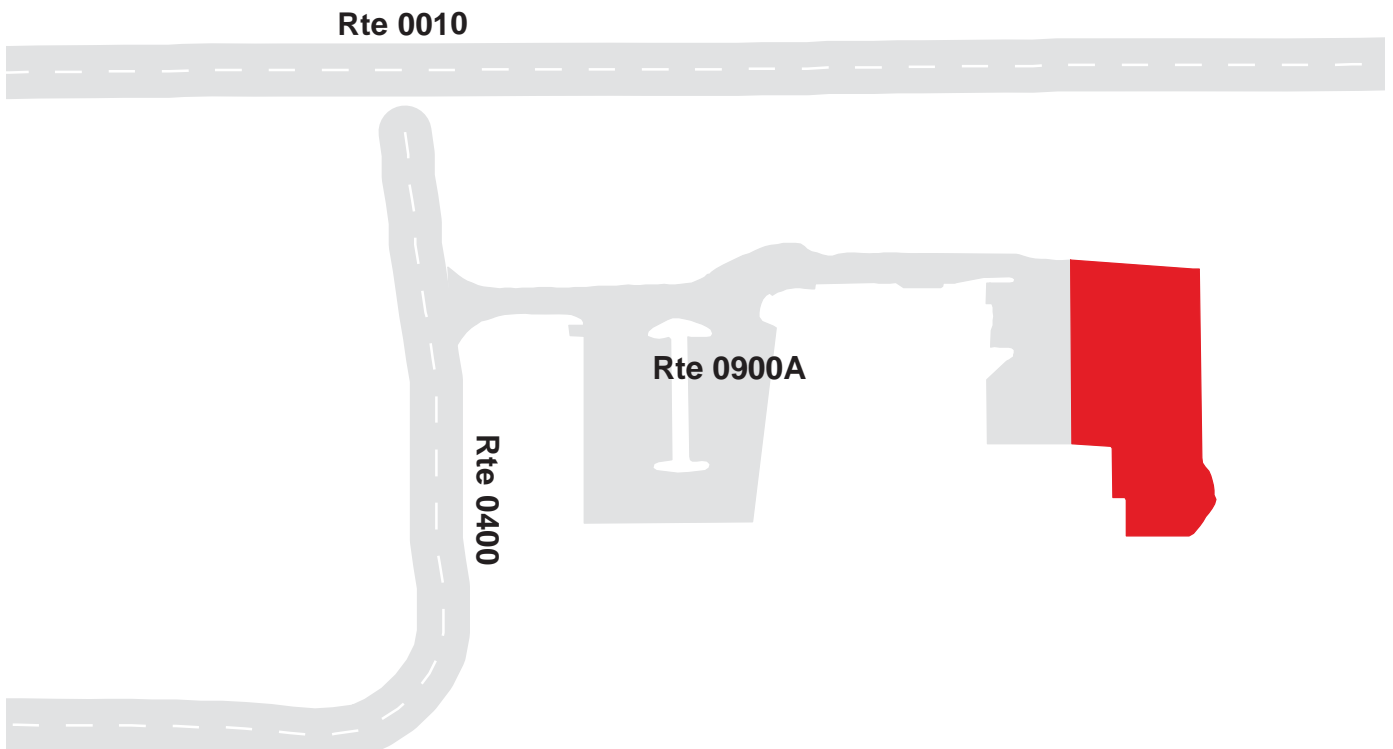
\* Lane miles are based on 11' lane widths



**Big Cypress National Preserve**  
**Route 0900B**  
 HEADQUARTERS PARKING (UNPAVED)  
 From Route 0900A

Route	Public / NonPublic	Date Visited	Area (sq ft)	Lane Miles *	Surface Type	Condition / PCR
0900B	NonPublic	6/30/2001	18056	0.31	GR	N/A

\* Lane miles are based on 11' lane widths



# Big Cypress National Preserve

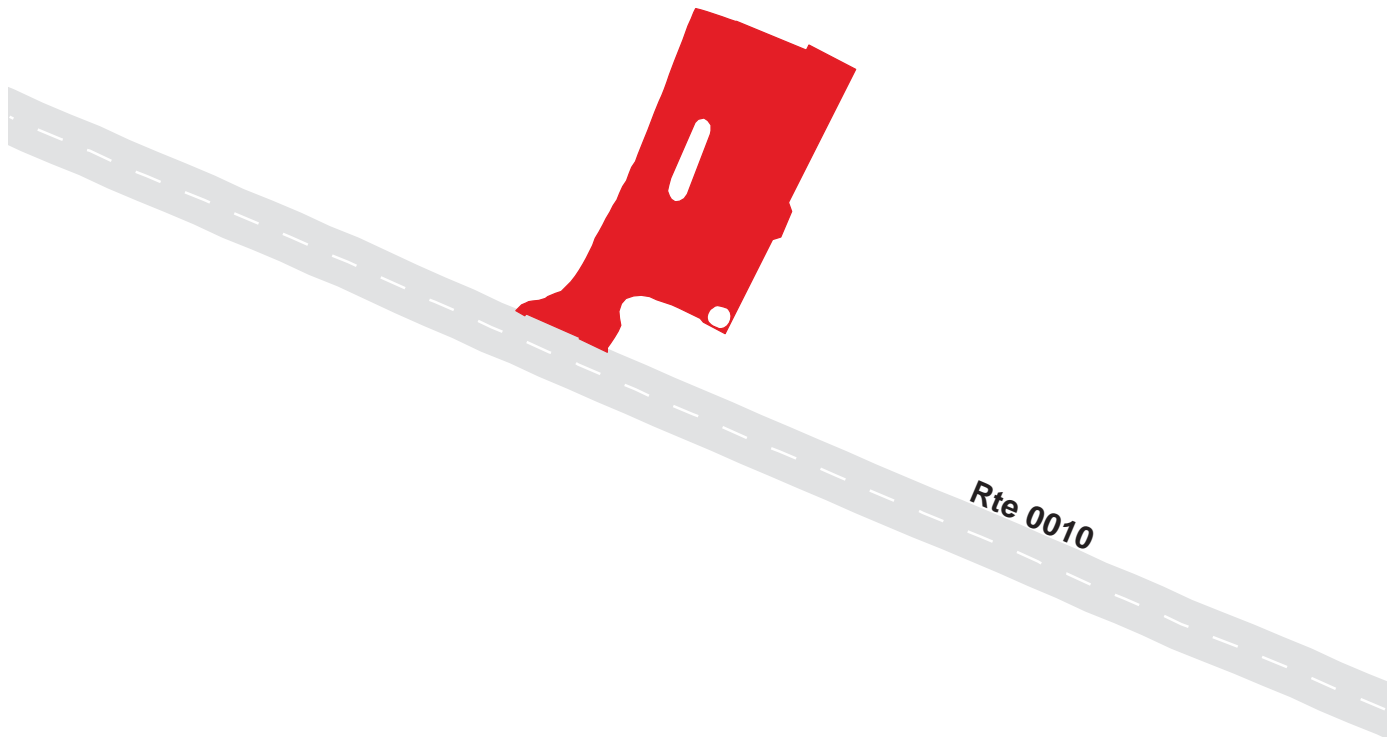
## Route 0901

HP WILLIAMS WAYSIDE

From Route 0010

Route	Public / NonPublic	Date Visited	Area (sq ft)	Lane Miles *	Surface Type	Condition / PCR
0901	Public	6/30/2001	15006	0.26	AS	FAIR / 73

\* Lane miles are based on 11' lane widths





# Big Cypress National Preserve

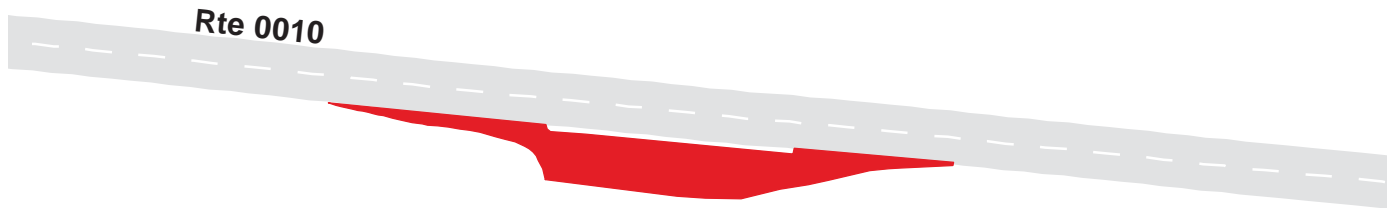
## Route 0902A

KIRBY STORTER WAYSIDE A

From Route 0010

Route	Public / NonPublic	Date Visited	Area (sq ft)	Lane Miles *	Surface Type	Condition / PCR
0902A	Public	6/30/2001	13506	0.23	AS	FAIR / 73

\* Lane miles are based on 11' lane widths



# Big Cypress National Preserve

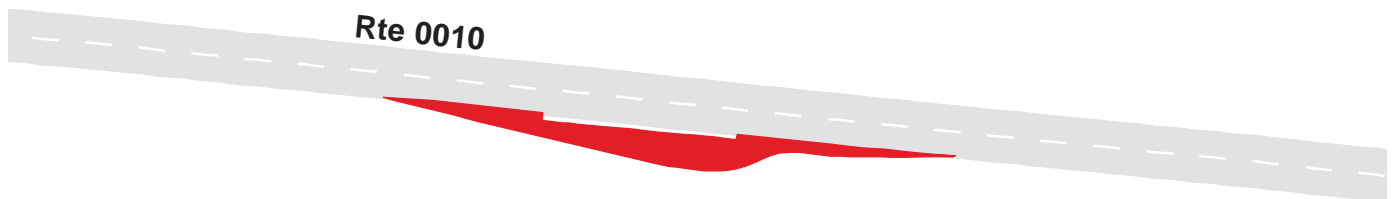
## Route 0902B

KIRBY STORTER WAYSIDE B

From Route 0010

Route	Public / NonPublic	Date Visited	Area (sq ft)	Lane Miles *	Surface Type	Condition / PCR
0902B	Public	6/30/2001	7538	0.13	AS	GOOD / 90

\* Lane miles are based on 11' lane widths



# Big Cypress National Preserve

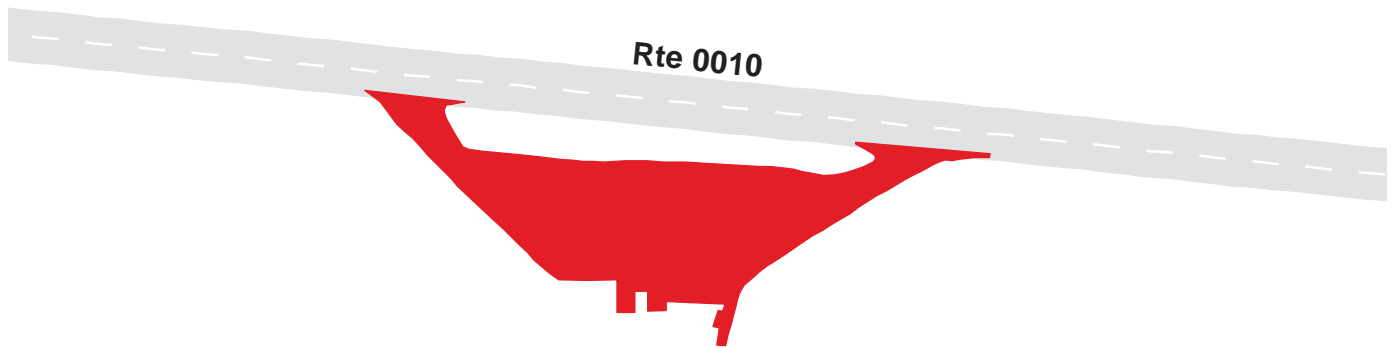
## Route 0903

### MONROE STATION PARKING

From Route 0010

Route	Public / NonPublic	Date Visited	Area (sq ft)	Lane Miles *	Surface Type	Condition / PCR
0903	Public	6/30/2001	32511	0.56	AS	POOR / 45

\* Lane miles are based on 11' lane widths



# Big Cypress National Preserve

## Route 0904

### OASIS VISITOR CENTER PARKING

From Route 0010

Route	Public / NonPublic	Date Visited	Area (sq ft)	Lane Miles *	Surface Type	Condition / PCR
0904	Public	6/30/2001	40124	0.69	AS	GOOD / 90

\* Lane miles are based on 11' lane widths



# ***BICY: PARKWIDE MAINTENANCE FEATURES SUMMARY***

<b><i>FEATURE</i></b>	<b><i>PARK TOTAL</i></b>	<b><i>UNIT</i></b>
BRIDGE	52	EACH
CATTLE GUARD	0	EACH
CULVERT	30	EACH
CURB	90	LINEAR FEET
DROP INLET	0	EACH
GUARD WALL	0	LINEAR FEET
GUARDRAIL	218,909	LINEAR FEET
INTERSECTION	84	EACH
LOW WATER CROSSING	0	EACH
OVERHEAD SIGN	0	EACH
PARK BOUNDARY	0	EACH
PAVED DITCH	0	LINEAR FEET
PULLOUT	0	EACH
RAILROAD CROSSING	0	EACH
RETAINING WALL	0	EACH
STATE BOUNDARY	0	EACH
TRAFFIC LIGHT	0	EACH
TUNNEL	0	EACH
TURNOUT	729	LINEAR FEET

# ***BICY: ROUTE MAINTENANCE FEATURES SUMMARY***

<b><i>FEATURE</i></b>	<b><i>ROUTE 0010 HIGHWAY 41</i></b>	<b><i>ROUTE 0100 DONA DRIVE</i></b>	<b><i>ROUTE 0102 LOOP ROAD</i></b>	<b><i>ROUTE 0103 MIDWAY CAMPGROUND ROAD</i></b>	<b><i>ROUTE 0104 SEAGRAPE DRIVE</i></b>	<b><i>ROUTE 0400 SATINWOOD DRIVE</i></b>	<b><i>UNIT</i></b>
BRIDGE	48	0	4	0	0	0	EACH
CATTLE GUARD	0	0	0	0	0	0	EACH
CULVERT	0	0	30	0	0	0	EACH
CURB	90	0	0	0	0	0	LINEAR FEET
DROP INLET	0	0	0	0	0	0	EACH
GUARD WALL	0	0	0	0	0	0	LINEAR FEET
GUARDRAIL	218,909	0	0	0	0	0	LINEAR FEET
INTERSECTION	64	1	7	4	2	6	EACH
LOW WATER CROSSING	0	0	0	0	0	0	EACH
OVERHEAD SIGN	0	0	0	0	0	0	EACH
PARK BOUNDARY	0	0	0	0	0	0	EACH
PAVED DITCH	0	0	0	0	0	0	LINEAR FEET
PULLOUT	0	0	0	0	0	0	EACH
RAILROAD CROSSING	0	0	0	0	0	0	EACH
RETAINING WALL	0	0	0	0	0	0	EACH
STATE BOUNDARY	0	0	0	0	0	0	EACH
TRAFFIC LIGHT	0	0	0	0	0	0	EACH
TUNNEL	0	0	0	0	0	0	EACH
TURNOUT	729	0	0	0	0	0	LINEAR FEET

# ***BICY: ROUTE MAINTENANCE FEATURES SUMMARY***

<b><i>FEATURE</i></b>	<b><i>ROUTE 0401 MAHOGAN DRIVE</i></b>	<b><i>UNIT</i></b>
BRIDGE	0	EACH
CATTLE GUARD	0	EACH
CULVERT	0	EACH
CURB	0	LINEAR FEET
DROP INLET	0	EACH
GUARD WALL	0	LINEAR FEET
GUARDRAIL	0	LINEAR FEET
INTERSECTION	0	EACH
LOW WATER CROSSING	0	EACH
OVERHEAD SIGN	0	EACH
PARK BOUNDARY	0	EACH
PAVED DITCH	0	LINEAR FEET
PULLOUT	0	EACH
RAILROAD CROSSING	0	EACH
RETAINING WALL	0	EACH
STATE BOUNDARY	0	EACH
TRAFFIC LIGHT	0	EACH
TUNNEL	0	EACH
TURNOUT	0	LINEAR FEET

# ***BICY: ROUTE MAINTENANCE FEATURES ROAD LOG***

***ROUTE 0010 : HIGHWAY 41***

<b><i>FROM MILEPOST</i></b>	<b><i>TO MILEPOST</i></b>	<b><i>FEATURE</i></b>	<b><i>SIDE</i></b>	<b><i>COMMENT</i></b>
0.000	0.000			ROUTE BEGINS AT EAST PARK BOUNDARY
0.011	4.408	GUARDRAIL	RIGHT	
0.018	3.608	GUARDRAIL	LEFT	
0.032	0.037	BRIDGE	N/A	
0.561	0.565	BRIDGE	N/A	
1.084	1.087	BRIDGE	N/A	
1.339	1.344	BRIDGE	N/A	
1.760	1.765	BRIDGE	N/A	
2.683	2.687	BRIDGE	N/A	
3.605	3.605	INTERSECTION	LEFT	
3.616	3.637	GUARDRAIL	LEFT	
3.630	3.630	INTERSECTION	LEFT	
3.661	3.912	GUARDRAIL	LEFT	
3.666	3.670	BRIDGE	N/A	
3.977	3.977	INTERSECTION	LEFT	
4.402	4.402	INTERSECTION	RIGHT	
4.412	4.581	GUARDRAIL	RIGHT	
4.573	4.573	INTERSECTION	RIGHT	
4.586	4.816	GUARDRAIL	RIGHT	
4.700	4.723	BRIDGE	N/A	
4.705	4.748	GUARDRAIL	LEFT	
4.796	4.796	INTERSECTION	LEFT	
4.807	4.807	INTERSECTION	RIGHT	
4.823	4.841	GUARDRAIL	RIGHT	
4.833	4.833	INTERSECTION	RIGHT	
4.847	4.907	GUARDRAIL	RIGHT	
4.904	4.904	INTERSECTION	RIGHT	



# ***BICY: ROUTE MAINTENANCE FEATURES ROAD LOG***

***ROUTE 0010 : HIGHWAY 41***

<b><i>FROM MILEPOST</i></b>	<b><i>TO MILEPOST</i></b>	<b><i>FEATURE</i></b>	<b><i>SIDE</i></b>	<b><i>COMMENT</i></b>
4.917	4.956	GUARDRAIL	RIGHT	
4.953	4.953	INTERSECTION	RIGHT	
4.971	5.217	GUARDRAIL	RIGHT	
5.187	5.187	INTERSECTION	LEFT	
5.221	5.263	GUARDRAIL	RIGHT	
5.256	5.256	INTERSECTION	RIGHT	
5.265	5.320	GUARDRAIL	RIGHT	
5.300	5.343	TURNOUT	RIGHT	
5.302	5.321	TURNOUT	LEFT	
5.328	6.042	GUARDRAIL	RIGHT	
5.340	5.340	INTERSECTION	LEFT	
5.370	5.370	INTERSECTION	LEFT	
5.581	5.595	BRIDGE	N/A	
5.587	5.619	GUARDRAIL	LEFT	
5.931	5.974	GUARDRAIL	LEFT	
5.934	5.950	BRIDGE	N/A	
6.027	6.063	TURNOUT	LEFT	
6.029	6.069	TURNOUT	RIGHT	
6.047	6.053	GUARDRAIL	RIGHT	
6.059	8.165	GUARDRAIL	RIGHT	
6.645	6.660	BRIDGE	N/A	
6.652	6.693	GUARDRAIL	LEFT	
7.399	7.410	BRIDGE	N/A	
7.404	7.445	GUARDRAIL	LEFT	
7.781	7.799	BRIDGE	N/A	
7.788	7.833	GUARDRAIL	LEFT	
8.161	8.161	INTERSECTION	RIGHT	

# ***BICY: ROUTE MAINTENANCE FEATURES ROAD LOG***

## ***ROUTE 0010 : HIGHWAY 41***

<b><i>FROM MILEPOST</i></b>	<b><i>TO MILEPOST</i></b>	<b><i>FEATURE</i></b>	<b><i>SIDE</i></b>	<b><i>COMMENT</i></b>
8.179	8.322	GUARDRAIL	RIGHT	
8.314	8.314	INTERSECTION	RIGHT	AIRPORT RD
8.341	8.562	GUARDRAIL	RIGHT	
8.425	8.436	BRIDGE	N/A	
8.430	8.449	GUARDRAIL	LEFT	
8.550	8.550	INTERSECTION	RIGHT	
8.564	8.657	GUARDRAIL	RIGHT	
8.648	8.648	INTERSECTION	RIGHT	
8.661	8.668	GUARDRAIL	RIGHT	
8.662	8.662	INTERSECTION	RIGHT	
8.674	8.734	GUARDRAIL	RIGHT	
8.725	8.725	INTERSECTION	RIGHT	
8.740	9.016	GUARDRAIL	RIGHT	
8.761	8.774	BRIDGE	N/A	
8.767	8.805	GUARDRAIL	LEFT	
9.019	9.939	GUARDRAIL	RIGHT	
9.354	9.367	BRIDGE	N/A	
9.356	9.393	GUARDRAIL	LEFT	
9.929	9.929	INTERSECTION	RIGHT	NON NPS GRAVEL
9.941	12.660	GUARDRAIL	RIGHT	
9.980	9.995	BRIDGE	N/A	
9.984	10.022	GUARDRAIL	LEFT	
10.406	10.420	BRIDGE	N/A	
10.411	10.453	GUARDRAIL	LEFT	
11.402	11.410	BRIDGE	N/A	
11.404	11.442	GUARDRAIL	LEFT	
11.840	11.852	BRIDGE	N/A	

# ***BICY: ROUTE MAINTENANCE FEATURES ROAD LOG***

***ROUTE 0010 : HIGHWAY 41***

<b><i>FROM MILEPOST</i></b>	<b><i>TO MILEPOST</i></b>	<b><i>FEATURE</i></b>	<b><i>SIDE</i></b>	<b><i>COMMENT</i></b>
11.841	11.877	GUARDRAIL	LEFT	
12.081	12.086	BRIDGE	N/A	
12.082	12.118	GUARDRAIL	LEFT	
12.314	12.314	INTERSECTION	LEFT	ROUTE 103
12.393	12.393	INTERSECTION	LEFT	ROUTE 103
12.593	12.601	BRIDGE	N/A	
12.598	12.632	GUARDRAIL	LEFT	
12.658	12.658	INTERSECTION	RIGHT	
12.670	13.693	GUARDRAIL	RIGHT	
13.107	13.116	BRIDGE	N/A	
13.110	13.154	GUARDRAIL	LEFT	
13.488	13.496	BRIDGE	N/A	
13.491	13.523	GUARDRAIL	LEFT	
13.688	13.688	INTERSECTION	RIGHT	
13.718	14.429	GUARDRAIL	RIGHT	
14.285	14.285	INTERSECTION	LEFT	NON NPS PARKING
14.302	14.314	BRIDGE	N/A	
14.303	14.346	GUARDRAIL	LEFT	
14.425	14.425	INTERSECTION	RIGHT	
14.435	14.518	GUARDRAIL	RIGHT	
14.497	14.497	INTERSECTION	LEFT	
14.509	14.509	INTERSECTION	RIGHT	
14.521	14.557	GUARDRAIL	RIGHT	
14.562	14.672	GUARDRAIL	RIGHT	
14.689	14.832	GUARDRAIL	RIGHT	
14.840	14.898	GUARDRAIL	RIGHT	
14.889	14.889	INTERSECTION	RIGHT	

# ***BICY: ROUTE MAINTENANCE FEATURES ROAD LOG***

## ***ROUTE 0010 : HIGHWAY 41***

<b><i>FROM MILEPOST</i></b>	<b><i>TO MILEPOST</i></b>	<b><i>FEATURE</i></b>	<b><i>SIDE</i></b>	<b><i>COMMENT</i></b>
14.900	15.118	GUARDRAIL	RIGHT	
15.122	15.122	INTERSECTION	RIGHT	ROUTE 904
15.148	15.193	GUARDRAIL	RIGHT	
15.184	15.184	INTERSECTION	RIGHT	ROUTE 904
15.205	15.298	GUARDRAIL	RIGHT	
15.297	15.297	INTERSECTION	RIGHT	
15.303	19.400	GUARDRAIL	RIGHT	
15.805	15.817	BRIDGE	N/A	
15.809	15.845	GUARDRAIL	LEFT	
16.807	16.819	BRIDGE	N/A	
16.813	16.845	GUARDRAIL	LEFT	
18.630	18.643	BRIDGE	N/A	
18.632	18.674	GUARDRAIL	LEFT	
19.304	19.304	INTERSECTION	LEFT	ROUTE 903
19.379	19.379	INTERSECTION	LEFT	ROUTE 102
19.393	19.393	INTERSECTION	RIGHT	NON NPS ROAD
19.404	19.443	GUARDRAIL	LEFT	
19.408	20.231	GUARDRAIL	RIGHT	
19.986	19.998	BRIDGE	N/A	
19.992	20.029	GUARDRAIL	LEFT	
20.228	20.228	INTERSECTION	RIGHT	ROUTE 101
20.241	24.123	GUARDRAIL	RIGHT	
21.495	21.509	BRIDGE	N/A	
21.499	21.540	GUARDRAIL	LEFT	
22.506	22.521	BRIDGE	N/A	
22.514	22.546	GUARDRAIL	LEFT	
22.761	22.761	INTERSECTION	LEFT	ROUTE 902

# ***BICY: ROUTE MAINTENANCE FEATURES ROAD LOG***

## ***ROUTE 0010 : HIGHWAY 41***

<b><i>FROM MILEPOST</i></b>	<b><i>TO MILEPOST</i></b>	<b><i>FEATURE</i></b>	<b><i>SIDE</i></b>	<b><i>COMMENT</i></b>
23.023	23.033	BRIDGE	N/A	
23.033	23.064	GUARDRAIL	LEFT	
24.131	27.534	GUARDRAIL	RIGHT	
24.480	24.488	BRIDGE	N/A	
24.489	24.522	GUARDRAIL	LEFT	
24.808	24.823	BRIDGE	N/A	
24.811	24.850	GUARDRAIL	LEFT	
25.111	25.118	BRIDGE	N/A	
25.114	25.154	GUARDRAIL	LEFT	
25.542	25.551	BRIDGE	N/A	
25.549	25.582	GUARDRAIL	LEFT	
26.040	26.051	BRIDGE	N/A	
26.045	26.084	GUARDRAIL	LEFT	
27.424	27.443	BRIDGE	N/A	
27.425	27.480	GUARDRAIL	LEFT	
27.541	27.541	INTERSECTION	RIGHT	ROUTE 109
27.554	29.745	GUARDRAIL	RIGHT	
27.988	27.988	INTERSECTION	LEFT	
28.675	28.686	BRIDGE	N/A	
28.678	28.713	GUARDRAIL	LEFT	
29.671	29.712	GUARDRAIL	LEFT	
29.673	29.696	BRIDGE	N/A	
29.736	29.736	INTERSECTION	RIGHT	ROUTE 901
29.753	30.373	GUARDRAIL	RIGHT	
30.237	30.282	BRIDGE	N/A	
30.240	30.317	GUARDRAIL	LEFT	
30.366	30.366	INTERSECTION	RIGHT	ROUTE 105

# ***BICY: ROUTE MAINTENANCE FEATURES ROAD LOG***

## ***ROUTE 0010 : HIGHWAY 41***

<b><i>FROM MILEPOST</i></b>	<b><i>TO MILEPOST</i></b>	<b><i>FEATURE</i></b>	<b><i>SIDE</i></b>	<b><i>COMMENT</i></b>
30.380	31.953	GUARDRAIL	RIGHT	
30.808	30.808	INTERSECTION	LEFT	NON NPS PARKING
30.968	30.981	BRIDGE	N/A	
30.969	31.010	GUARDRAIL	LEFT	
31.013	31.013	INTERSECTION	LEFT	FIRE STATION
31.042	31.042	INTERSECTION	LEFT	FIRE STATION
31.154	31.154	INTERSECTION	LEFT	
31.522	31.534	BRIDGE	N/A	
31.526	31.562	GUARDRAIL	LEFT	
31.949	31.949	INTERSECTION	RIGHT	ROUTE 111
31.973	31.973	INTERSECTION	RIGHT	NON NPS PARKING
32.002	32.137	GUARDRAIL	RIGHT	
32.079	32.089	BRIDGE	N/A	
32.084	32.128	GUARDRAIL	LEFT	
32.114	32.114	INTERSECTION	LEFT	NON NPS PARKING (POST OFFICE)
32.144	32.169	GUARDRAIL	RIGHT	
32.170	32.170	INTERSECTION	RIGHT	
32.187	32.452	GUARDRAIL	RIGHT	
32.301	32.301	INTERSECTION	LEFT	
32.460	32.968	GUARDRAIL	RIGHT	
32.731	32.745	BRIDGE	N/A	
32.732	32.755	GUARDRAIL	LEFT	
32.759	32.775	GUARDRAIL	LEFT	
32.952	32.952	INTERSECTION	LEFT	ROUTE 100
32.964	32.964	INTERSECTION	RIGHT	ROUTE 106
32.976	34.466	GUARDRAIL	RIGHT	
33.617	33.617	INTERSECTION	LEFT	ROUTE 900

# ***BICY: ROUTE MAINTENANCE FEATURES ROAD LOG***

## ***ROUTE 0010 : HIGHWAY 41***

<b><i>FROM MILEPOST</i></b>	<b><i>TO MILEPOST</i></b>	<b><i>FEATURE</i></b>	<b><i>SIDE</i></b>	<b><i>COMMENT</i></b>
33.734	33.734	INTERSECTION	LEFT	ROUTE 400
33.796	33.809	BRIDGE	N/A	
33.796	33.824	GUARDRAIL	LEFT	
33.817	33.817	INTERSECTION	LEFT	
33.831	33.843	GUARDRAIL	LEFT	
33.937	33.937	INTERSECTION	LEFT	ROUTE 104
34.297	34.297	INTERSECTION	LEFT	
34.462	34.462	INTERSECTION	LEFT	NON NPS PARKING
34.473	34.473	INTERSECTION	RIGHT	NON NPS PARKING
34.487	34.665	GUARDRAIL	RIGHT	
34.509	34.509	INTERSECTION	LEFT	NON NPS PARKING
34.556	34.591	GUARDRAIL	LEFT	
34.658	34.658	INTERSECTION	RIGHT	
34.683	36.379	GUARDRAIL	RIGHT	
35.398	35.409	BRIDGE	N/A	
35.398	35.437	GUARDRAIL	LEFT	
36.053	36.053	INTERSECTION	LEFT	
36.338	36.342	CURB	LEFT	
36.341	36.344	CURB	RIGHT	
36.341	36.374	GUARDRAIL	LEFT	
36.346	36.364	BRIDGE	N/A	
36.360	36.365	CURB	LEFT	
36.367	36.372	CURB	RIGHT	
36.370	36.370			ROUTE ENDS AT WEST PARK BOUNDARY
36.374	36.374	INTERSECTION	LEFT	

# ***BICY: ROUTE MAINTENANCE FEATURES ROAD LOG***

***ROUTE 0100 : DONA DRIVE***

<b><i>FROM MILEPOST</i></b>	<b><i>TO MILEPOST</i></b>	<b><i>FEATURE</i></b>	<b><i>SIDE</i></b>	<b><i>COMMENT</i></b>
0.000	0.000			ROUTE BEGINS AT BEGINNING OF PAVEMENT
0.571	0.571	INTERSECTION	LEFT	ROUTE 100
0.620	0.620			ROUTE ENDS AT END OF PAVEMENT



# ***BICY: ROUTE MAINTENANCE FEATURES ROAD LOG***

## ***ROUTE 0102 : LOOP ROAD***

<b><i>FROM MILEPOST</i></b>	<b><i>TO MILEPOST</i></b>	<b><i>FEATURE</i></b>	<b><i>SIDE</i></b>	<b><i>COMMENT</i></b>
0.000	0.000			ROUTE BEGINS AT MIAMI- DADE/ MONROE COUNTY LINE
0.067	0.067	CULVERT	N/A	
0.443	0.443	CULVERT	N/A	
0.449	0.449	CULVERT	N/A	
0.609	0.609	CULVERT	N/A	
0.943	0.943	CULVERT	N/A	
1.434	1.434	CULVERT	N/A	
1.574	1.574	CULVERT	N/A	
1.673	1.673	CULVERT	N/A	
1.753	1.760	BRIDGE	N/A	
2.182	2.187	BRIDGE	N/A	
2.251	2.251	CULVERT	N/A	
2.345	2.345	CULVERT	N/A	
2.350	2.350	CULVERT	N/A	
2.461	2.461	CULVERT	N/A	
2.465	2.465	CULVERT	N/A	
2.601	2.607	BRIDGE	N/A	
2.668	2.668	CULVERT	N/A	
2.855	2.855	CULVERT	N/A	
2.857	2.857	CULVERT	N/A	
2.908	2.908	INTERSECTION	RIGHT	ROUTE 204
2.942	2.942	CULVERT	N/A	
3.021	3.021	INTERSECTION	LEFT	
3.070	3.070	INTERSECTION	RIGHT	NON NPS ROAD
3.165	3.165	CULVERT	N/A	
3.337	3.337	CULVERT	N/A	
3.391	3.391	CULVERT	N/A	

# ***BICY: ROUTE MAINTENANCE FEATURES ROAD LOG***

## ***ROUTE 0102 : LOOP ROAD***

<b><i>FROM MILEPOST</i></b>	<b><i>TO MILEPOST</i></b>	<b><i>FEATURE</i></b>	<b><i>SIDE</i></b>	<b><i>COMMENT</i></b>
3.411	3.417	BRIDGE	N/A	
3.627	3.627	CULVERT	N/A	
3.653	3.653	CULVERT	N/A	
3.699	3.699	CULVERT	N/A	
3.732	3.732	INTERSECTION	LEFT	ROUTE 203
3.972	3.972	CULVERT	N/A	
4.154	4.154	INTERSECTION	LEFT	
4.288	4.288	INTERSECTION	RIGHT	
4.543	4.543	CULVERT	N/A	
4.560	4.560	CULVERT	N/A	
4.826	4.826	CULVERT	N/A	
5.027	5.027	CULVERT	N/A	
5.030	5.030	CULVERT	N/A	
5.033	5.033	CULVERT	N/A	
5.162	5.162	INTERSECTION	LEFT	NON BICY NPS PARKING
5.180	5.180			ROUTE ENDS AT END OF PAVEMENT

# ***BICY: ROUTE MAINTENANCE FEATURES ROAD LOG***

## ***ROUTE 0103 : MIDWAY CAMPGROUND ROAD***

<b><i>FROM MILEPOST</i></b>	<b><i>TO MILEPOST</i></b>	<b><i>FEATURE</i></b>	<b><i>SIDE</i></b>	<b><i>COMMENT</i></b>
0.000	0.000			ROUTE BEGINS AT ROUTE 010
0.039	0.039	INTERSECTION	LEFT	ROUTE 103
0.058	0.058	INTERSECTION	LEFT	ROUTE 103
0.100	0.100			ROUTE ENDS AT ROUTE 010
0.105	0.105	INTERSECTION	LEFT	
0.105	0.105	INTERSECTION	RIGHT	

# ***BICY: ROUTE MAINTENANCE FEATURES ROAD LOG***

## ***ROUTE 0104 : SEAGRAPE DRIVE***

<b><i>FROM MILEPOST</i></b>	<b><i>TO MILEPOST</i></b>	<b><i>FEATURE</i></b>	<b><i>SIDE</i></b>	<b><i>COMMENT</i></b>
0.000	0.000			ROUTE BEGINS AT ROUTE 010
0.573	0.573	INTERSECTION	LEFT	ROUTE 104
0.583	0.583	INTERSECTION	RIGHT	
0.600	0.600			ROUTE ENDS AT END OF LOOP

# ***BICY: ROUTE MAINTENANCE FEATURES ROAD LOG***

## ***ROUTE 0400 : SATINWOOD DRIVE***

<b><i>FROM MILEPOST</i></b>	<b><i>TO MILEPOST</i></b>	<b><i>FEATURE</i></b>	<b><i>SIDE</i></b>	<b><i>COMMENT</i></b>
0.000	0.000			ROUTE BEGINS AT ROUTE 010
0.026	0.026	INTERSECTION	LEFT	ROUTE 900
0.058	0.058	INTERSECTION	LEFT	ROUTE 900
0.060	0.060	INTERSECTION	RIGHT	
0.101	0.101	INTERSECTION	LEFT	ROUTE 905
0.156	0.156	INTERSECTION	LEFT	ROUTE 401
0.344	0.344	INTERSECTION	LEFT	ROUTE 908
0.430	0.430			ROUTE ENDS AT END

# ***BICY: ROUTE MAINTENANCE FEATURES ROAD LOG***

***ROUTE 0401 : MAHOGANY DRIVE***

<b><i>FROM MILEPOST</i></b>	<b><i>TO MILEPOST</i></b>	<b><i>FEATURE</i></b>	<b><i>SIDE</i></b>	<b><i>COMMENT</i></b>
NO MAINTENANCE FEATURES IN ROUTE.				
0.000	0.000			ROUTE BEGINS AT ROUTE 400
0.230	0.230			ROUTE ENDS AT END

## APPENDIX A: GLOSSARY OF TERMS AND ABBREVIATIONS

<b>TERM OR ABBREVIATION</b>	<b>DESCRIPTION OR DEFINITION</b>
5120	Numeric Code for Big Cypress National Preserve
AADT	Annually Adjusted Daily Traffic. Average daily traffic adjusted for the term period comprising 80% of annual visitation
BICY	Alpha Code for Big Cypress National Preserve
CRS	Condition Rating Sheets. (Section 5)
Drainage Condition Rating	A visual rating (Good, Poor) of the drainage condition. (see Section 10)
Excellent	Excellent rating with an index value of 95 or greater
Fair	Fair rating with an index value between 61 and 84
Func. Class	Functional Classification (see Route ID, Section 4)
Good	Good rating with an index value between 85 and 94
IRI	International Roughness Index
Lane Width	Distance from road centerline to fogline, or from centerline to edge-of-pavement when no fogline exists
MRR	Manually Rated Route
NA	Not Applicable
NC	Not Collected
Paved Width	Distance from edge-of-pavement to edge-of-pavement
PCR	Pavement Condition Rating (see Section 10)

Poor	Poor Rating with an index value of 60 or less
RCI	Roughness Condition Index
SADT	Seasonal Annual Daily Traffic. Average daily traffic for the total defined "season"
SCR	Surface Condition Rating (see Section 10)
Shoulder Condition Rating	Visual rating (Good, Poor) of the condition of shoulder. (see Section 10)
Shoulder Width	Distance from fogline to hinge point, or if no fogline, from edge-of-pavement to hinge point



## APPENDIX B: DESCRIPTION OF RATING SYSTEM

A numerical roadway rating system is used to describe the overall condition of the paved roadways and paved parking areas. In this system, a numerical rating between 1 and 100 is ascribed to each 0.02 miles of road. This numerical rating is called a Pavement Condition Rating (PCR). A “perfect” road, newly constructed with no surface distresses and a smooth surface, would be assigned a PCR rating of 100. Based on the type, severity, and extent of surface distresses points are deducted from 100 to arrive at the final PCR.

Data is collected on the following distresses and conditions:

- **Alligator Cracking** - a series of interconnecting cracks resembling alligator skin or chicken wire, which can occur anywhere in the lane.
- **Longitudinal Cracking** - cracks which are parallel to the pavement centerline or asphalt lay-down direction.
- **Transverse Cracking** - cracks perpendicular to the pavement centerline.
- **Pothole (patch)** - a bowl-shaped hole in the pavement surface. May be patched or not.
- **Rutting** - surface depressions in the wheel paths.

**Roughness** is collected as International Roughness Index (IRI) and is used in the PCR formula. Roughness is measured in inches of vertical displacement of the vehicle per mile traveled.

A Distress Rating Index value is calculated for each of the individual distresses at the 0.02 mile, or every 105.6 feet.

### Rating Index Formulas

**Alligator Cracking Index** =  $100 - [40 * ( \%low/70 + \%medium/30 + \%high/10 )]$

**Longitudinal Cracking Index** =  $100 - [40 * ( \%low/350 + \%medium/200 + \%high/75 )]$

**Transverse Cracking Index** =  $100 - [(20 * ( low/15.1 + medium/7.5)) + (40 * (high/1.9))]$

**Patching Index** =  $100 - [40 * ( \%patching / 80 )]$

**Rutting Index:**  $100 - [40 * ((low/160) + (med/80) + (high/40))]$

**Roughness Condition Index: (RCI)** =  $32 * [5 * e^{(-0.0041 * \text{average IRI})}]$

These 0.02 Distress Rating Index values are then averaged over one mile sections for the mile-by-mile Distress Rating Indexes, Surface Condition Rating (SCR) and Pavement Condition Rating (PCR).

**Surface Condition Rating (SCR)** =  $100 - [(100 - AC\_INDEX) + (100 - LC\_INDEX) + (100 - TC\_INDEX) + (100 - PATCH\_INDEX) + (100 - RUT\_INDEX)]$

**Pavement Condition Rating (PCR)** =  $( SCR * 0.60 ) + ( RCI * 0.40 )$

NOTE: Collection of roughness data is dependant on the data collection vehicle traveling at a minimum speed of 12 mph. In the event that a route cannot be safely traveled at this minimum speed, and results in no roughness data, the SCR only will be calculated.

## **Parking Lot and Manually Rated Road Condition Rating**

### **Surface Condition Distresses- Chip Seal:**

Raveling – loss of surface rock chips revealing previous surface

Bleeding – asphalt or tar is bleeding through to the surface where surface looks slick with asphalt

Rutting

Potholes/Patching

### **Ratings - Chip Seal:**

Excellent – None of the surface affected by the above (recently constructed)

Good – Less than 10% of surface affected by the above

Fair – Between 10% and 40% of surface affected by the above

Poor – More than 40% of surface affected by the above

### **Surface Condition - Asphalt:**

Cracking of any type

Rutting

Potholes/Patching

### **Ratings - Asphalt:**

Excellent – None of the surface affected by the above (recently constructed)

Good – Less than 10% of surface affected by the above

Fair – Between 10% and 40% of surface affected by the above

Poor – More than 40% of surface affected by the above

## **Index Values of Visual Ratings on Parking Lots and Manually Rated Roads**

Excellent	97
Good	90
Fair	73
Poor	45

### Drainage Condition Rating Definitions

- Good:** Minimal overall drainage problems. If funding were available for pavement maintenance, 25% or less is estimated to correct drainage deficiencies.
- Poor:** Problems exist that jeopardizes the integrity of the road in this section. If funding were available for pavement maintenance, 50% to 100% is estimated to correct drainage deficiencies.

### Drainage Condition Rating Criteria

The following are examples of basic criteria to help the rater to identify the different drainage ratings. While in the field, many other flaws will be discovered, but these criteria should give a feel for where the flaws would apply in the ratings.

#### **Good Drainage**

Most water clears the road prism adequately with little concern of base saturation.

- X Pavement has minor deficiencies that interrupt water flow.
- X Shoulders are mostly adequate as they relate to surrounding terrain. Shoulder design generally coincides with the drainage design.
- X Curbs have deficiencies, but still function without erosion.
- X Down drains are placed properly, but show signs of some deterioration.
- X Culverts are adequate in numbers and size however, minor deficiencies are evident.
- X Ditches are not paved, but solid and have enough area to maintain and carry required volume of water.

#### **Poor Drainage**

This section has areas of inadequate drainage ability that is causing base saturation that could cause a road failure.

- X Pavement grade is irregular and holds dangerous amounts of water (hydroplaning is a concern), or shows massive alligator cracking.
- X Shoulder design induces ponding that encroaches on the pavement (drivers try to avoid ponds).
- X Portions of curbs are missing, allowing water to escape causing erosion.
- X Drop inlets, due to various reasons, are only able to drain 50% or less efficiently.
- X Down drains show signs of water exiting in areas by the down drain causing erosion.
- X Culverts are functionally deficient including size, installation, location, or grade giving water opportunity to saturate the road base.
- X Ditches allow water opportunity to saturate the road base through various reasons such as low places in ditch where design has not allowed for water to drain, little or no room in the road prism for a needed ditch, or water is disappearing within the ditch.

### Shoulder Condition Rating Definitions

- Good:** The shoulder is generally in good functional condition. If curbs are present, they are functional.
- Poor:** There is no shoulder because erosion has removed it. If curbs are present, they need to be replaced.

### **Shoulder Rating Criteria**

The following are examples of basic criteria to help the rater to identify the different shoulder ratings. While in the field, many other flaws will be discovered, but these criteria should give a feel for where the flaws would apply in the ratings.

#### **Good Shoulders**

- X If shoulder is unpaved drop-offs are less than 1", but grading is required.
- X If shoulder is paved rut depth is less than 1/2", sealed cracks are present, and grading is required.
- X If curbs are present they are functional.

#### **Poor Shoulder**

- X If shoulder is unpaved drop-offs are greater than 4" and erosion has removed the shoulder.
- X If shoulder is paved rut depth is greater than 1". Open cracks are greater than 1/4" deep, and erosion has removed the shoulder.
- X If curbs are present they need replacement.
- X If curbs are present they need repairs, and there is erosion behind the curb.

## **APPENDIX C: DIGITAL IMAGE INFORMATION**

All images collected in Cycle 3 are digital images. These images provide the best resolution for identifying sign inventories and pavement evaluations. The images can be viewed with an interactive software program called **Visi-Data**. Each park will have a copy of the Visi-Data program installed in the park for park personnel to access and use.

Only Cycle 3 data can be queried and reviewed using the Visi-Data software program. This program is a multimedia data presentation and analysis tool that can be accessed either at the individual park, park region or at NPS headquarters. The data is organized in a hierarchical manner and presented in tabular and graphical formats. The user is able to perform queries and drill down through the data to find the particular information they are trying to query. Associated digital right-of-way images from either the LAN, USB port, individual DVD, or from the Visi-web application, can be presented along with the GPS locations.

## APPENDIX D: METADATA

### ARAN ROUTE GPS DATA

Background information of route spatial data.

**GPS Records:** GPS data for NPS routes is stored in the MS Access database for the park. The coordinates of the road traces are stored in the 'PMS\_20' table in the 'GPS\_LAT' and 'GPS\_LON' fields.

**Data Collection Device:**

Vehicle Information: Ford Van  
Type of GPS Unit: NovAtel MiLLennium, 12 channel, dual frequency L1/L2, DGPS ready receiver w/MiLLennium 502 GPS antenna and OmniSTAR System 3000 LR  
Inertial System: Applanix POS LV

**Accuracy:** Expected ground accuracy is 1 meter \*

\*The above accuracy assumes good GPS mission planning resulting in maximum GPS satellite observation and ideal environmental conditions. Due to less than ideal satellite and environmental conditions, some routes may lack the expected ground accuracy.

**Geographic Datum:** WGS 1984

**Post Collection GPS Correction:** Due to unanticipated GPS collection inaccuracies, some route locations have been digitized using DOQQ's and other data sources.

## FHWA – NPS Road Inventory Program Cycle 3 Metadata for the Park Database

The purpose of these sheets is to provide users of the Road Inventory Program's data with data accuracies and tolerances to help users define ways in which the RIP data can and cannot be used. For further information on specifics of data collection equipment, data collection procedures, equipment calibrations, or quality control/quality assurance procedures, please contact Jim Kennedy, Project Manager, Data Quality Assurance, at 720-963-3560 or jim.kennedy@fhwa.dot.gov.

All Road Inventory Program data undergoes quality control and quality assurance testing. This document represents the known data accuracies and tolerances for the data collection equipment, data collection procedures, and data processing procedures currently in use. Many additional tests conducted on the park databases during the quality assurance phase to ensure data integrity are not listed as a part of this document. Before it is delivered, a park database undergoes a large set of table design consistency, field data format consistency, data completeness, uniqueness of key fields, data reasonableness, acceptable data range, within-field data consistency, between-field data consistency, and between-table data consistency tests. Additional data sampling checks are conducted to ensure proper data upload from raw files into the park database and to quality check the pavement crack analysis. Further information is detailed in the FHWA – NPS RIP Quality Assurance Manual, available upon request.

This description of metadata includes only the known accuracies with which a data field matches its expected value. The tables that follow this page show each database field's:

- Field – field name
- Format – data type and number of characters of field
- Expected Value – meaning of value assigned to field
- Source – when in process field value obtained
- Validation – how field value obtained
- Expected Accuracy – accuracy with which contents of field match Expected Value

Verifying and continually improving the accuracy of Road Inventory Program data is an ongoing goal of the Federal Highway Administration and the National Park Service. Field testing and post-collection analysis of ARAN (Automatic Road Analyzer) -collected data will continue in Cycle 4. Data quality is expected to improve as the FHWA – NPS Road Inventory Program continues to operate, due to the fact that future data collection cycles will consist in large part of data updates. Also, technological improvements are expected to render the data increasingly consistent with actual roadway conditions as data collection cycles progress.

### Specific Caveats

- Three canned reports are titled “Features in Good Condition”, “Features in Fair Condition,” and “Features in Poor Condition.” These titles could be misleading. In Cycle 3, condition assessments have been conducted on **signs only**. Condition assessments have not been conducted on non-sign features, such as culverts, guardrails, pullouts, etc. Although the database and canned reports might report a default value of “good” for un-assessed features, these condition values are not valid for import into FMSS.
- Database records that show a concrete surface type sometimes include index values that seem to show a perfect roadway (e.g., a Pavement Condition Rating (PCR) of 100). The Road Inventory Program does not actually conduct condition assessments of concrete surfaces. The perfect values are just default values assigned to unassessed sections of pavement and do not represent an assessment of the roadway surface's quality.
- On the USB drive, in the Database folder, parks are provided with intersection lists and exceptions lists. These documents should be treated as raw files and are **not accurate**. Refer to the final database for accurately post-processed intersection data.
- Most roadway data is collected in the primary direction lane of a roadway. To save data storage

space and to reduce data analysis efforts, the assumption was made that the paved surface condition of a route's primary lane adequately represents the surface condition of the full roadway. Therefore, in the database, opposite-direction records in the PMS\_Visidata table do not include assessed values for roadway surface distresses. Values such as 0, N/A, -1, or a repeat of the primary-direction assessed value indicate that no assessment was performed. The PMS\_20 and PMS\_Mile tables simply exclude all opposite routes.

- Most roadway features are collected relative to the primary direction lane of a roadway, using the primary-direction video. Signs are the only features collected using the opposite-direction video.

### **Key to Notes in Tables**

(1): Note that only one value fits in field, so even if this value varies throughout the route, only one value is recorded here.

(2): Note that some MP values listed here are estimates recorded during the Route ID process for use by the data collection crew (e.g. "FROM ROUTE 0010 AT MILEPOST 30.3"). They are estimates only and are not expected to match the more accurate milepost values included elsewhere in the database in the BEG\_MP, END\_MP, and MP fields.

(3): Mileage is measured by the ARAN (Automatic Road ANalyzer) data collection vehicle out to the 0.001 decimal place. The DMI (distance measuring instrument) is very accurate, with extremely slight variations in measurement due to air temperature, tire inflation, curves, hills, and equipment calibration.

(4): Features are measured differently depending on whether they are visible in the forward-facing video of the roadway, but every feature milepost measurement depends on the baseline measurement of the data collection vehicle's mileage. The ARAN (Automatic Road ANalyzer) data collection vehicle's mileage is measured by the DMI (distance measuring instrument) out to the 0.001 decimal place. The DMI is very accurate, with extremely slight variations in measurement due to air temperature, tire inflation, curves, hills, and equipment calibration. If a feature will not be visible in the forward-facing video, its milepost is determined by the data collectors' key press tagging the milepost when the ARAN passes the feature. Key presses are entered into the ARAN software when the vehicle travels typically between 15 and 45 miles/hour, so a delay of a single second as the vehicle passes a feature would result in an inaccuracy of 0.004 miles (22 feet) to 0.012 miles (66 feet). If a feature is visible in the video, its milepost is determined during post-processing using a video measurement software called Surveyor. Features along the side of a roadway that are measured using the Surveyor software might not be located very accurately. Surveyor is known to be most accurate when measuring quantities near the center of the video frame, as opposed to in the edges of the video image.

(5): Only signs are evaluated for condition. No other features' conditions are assessed, so "N/A" was originally intended to be the default value for unassessed features. However, some non-sign features do have condition ratings in the database. These are not accurate, because no assessment was ever done on non-sign features.

(6): Condition assessments are not conducted on concrete (CO) surface types. Perfect values for concrete road sections are default values and do not represent a condition assessment of the concrete surfaces.

(7): Roadway cracking presence, type, severity, and extent are determined by filming the roadway in the primary lane continuously with two overlapping analog cameras of 640 x 480 resolution. The images from both cameras are stitched together in real time to create a continuous strip image of the roadway pavement in the primary lane. Cracks 3 mm or greater in width are visible in this video. A semi-automatic process running the WiseCrax software with additional input by human operators provides the cracking quantities recorded in these database fields. Quality checks have determined that a consistent 80% or better of the visible cracks are recorded.



## Access Database Metadata

### Master Table Metadata:

FIELD	FORMAT	EXPECTED VALUE	SOURCE	VALIDATION	EXPECTED ACCURACY
RIP_CYCLE	X	3, for data collection cycle 3	Route ID Meeting	FHWA Determination	100%
STATE	XX	State where route is located	Route ID Meeting	Park Input/FHWA Determination	Untested. (1)
PARK_ALPHA	XXXX	Park alpha code	Route ID Meeting	NPS References	Untested
PARK_NO	XXXX	Park numeric code	Route ID Meeting	NPS References	Untested
RTE_NO	XXXXXX	Route number	Route ID Meeting	Park Input/FHWA Classification	Untested
RTE_NAME	(Text)	Route name	Route ID Meeting	Park Input	Untested. 50 characters fit in field
FUNCT_CLAS	X	Route functional classification	Route ID Meeting	Park Input/FHWA Classification	Untested
DIRECTION	XXX	Survey lane: PRI (primary) or OPP (opposite)	Route ID Meeting	Park Input/FHWA Determination	Untested
BEG_MP_EST	999.999 (miles)	Estimated starting MP	Route ID Meeting	Park Input/FHWA Determination	Estimated before data collected
END_MP_EST	999.999 (miles)	Estimated ending MP	Route ID Meeting	Park Input/FHWA Determination	Estimated before data collected
RTE_LENGTH	999.999 (miles)	Collected route length	ARAN Data Collection	Automatic Output	100%
FROM_DESC	(Text)	Beginning terminus of route	Route ID Meeting	Park Input/FHWA Determination	Estimated before data collected. (2)
TO_DESC	(Text)	Ending terminus of route	Route ID Meeting	Park Input/FHWA Determination	Estimated before data collected. (2)
NO_LANES	X	Number of lanes in route	ARAN Data Collection	Survey Crew Input	Untested. (1)
SURF_TYPE	XX	Surface type of route	ARAN Data Collection	Survey Crew Input	Untested. (1)
COMP_DIR	XX	Compass direction of route's primary lane (nearest cardinal direction)	Route ID Meeting	Park Input/FHWA Determination	Untested
COMMENTS	(Text)	Special information, if any	Contractor Post-processing	Contractor Input	Untested
FILENAME	XXXXXXXXXX	Filename of raw data files	ARAN Data Collection	Automatic Output	100%
SECTION	XXXXXX	Route section ID	Route ID Meeting/ARAN Data Collection	Survey Crew Input/Automatic Output	100%
FKEY	9999999	Unique record ID	Contractor Post-processing	Database Processing	100%
DATE	DD/MM/YY	Data collection date	ARAN Data Collection	Automatic Output	100%
BEG_MP	999.999 (miles)	Beginning MP collected	ARAN Data Collection	Automatic Output	100% (3)
END_MP	999.999 (miles)	Ending MP collected	ARAN Data Collection	Automatic Output	100% (3)

**PMS\_Feature Table Metadata:**

FIELD	FORMAT	EXPECTED VALUE	SOURCE	VALIDATION	EXPECTED ACCURACY
RIP_CYCLE	X	3, for data collection cycle 3	Route ID Meeting	FHWA Determination	100%
STATE	XX	State where route is located	Route ID Meeting	Park Input/FHWA Determination	Untested. (1)
PARK_ALPHA	XXXX	Park alpha code	Route ID Meeting	NPS References	Untested
PARK_NO	XXXX	Park numeric code	Route ID Meeting	NPS References	Untested
RTE_NO	XXXXXXXX	Route number	Route ID Meeting	Park Input/FHWA Classification	Untested
FUNCT_CLAS	X	Route functional class	Route ID Meeting	Park Input/FHWA Classification	Untested
DIRECTION	XXX	Survey lane: PRI (primary) or OPP (opposite)	Route ID Meeting	Park Input/FHWA Determination	Untested
MP	999.999 (miles)	Feature location along route	ARAN Data Collection/Contractor Post-processing	Survey Crew Input/Video Processing	Untested (4)
EVENT	XXXX	Event category of feature	Contractor Post-processing	Video Processing	Untested
EVENT_CODE	XXXX	Event sub-category of feature	Contractor Post-processing	Video Processing	Untested
EVENT_DESC	(Text)	Description of feature/contents of sign	Contractor Post-processing	Video Processing	Untested
MUTCD	"N/A"	N/A. Intended to be sign MUTCD code	Contractor Post-processing	Database Processing	Values inaccurate, defaulted to N/A
CONDITION	XXX	Sign condition (G-D, F-R, P-R, N/A)	Contractor Post-processing	Video Processing	Untested (5)
COMMENT	(Text)	Sign label, intersecting route, etc.	Contractor Post-processing	Database Processing	Untested
OFFSET	"N/A"	N/A. Intended to be offset from pavement edge	Contractor Post-processing	Database Processing	Values inaccurate, defaulted to N/A
SIDE	XXX	Side of route; "N/A" if not on one side	Contractor Post-processing	Video Processing	Untested
STR_NUMBER	XXXXXXXXXXXX	FHWA bridge structure number	FHWA Post-processing	Database Processing	Untested
GPS_LAT	"N/A"	N/A. Intended to be latitude coordinate	Contractor Post-processing	Database Processing	Values inaccurate, defaulted to N/A
GPS_LON	"N/A"	N/A. Intended to be longitude coordinate	Contractor Post-processing	Database Processing	Values inaccurate, defaulted to N/A
GPS_ELEV	"N/A"	N/A. Intended to be elevation	Contractor Post-processing	Database Processing	Values inaccurate, defaulted to N/A
GPS_MODE	"N/A"	N/A. Intended to be GPS mode	Contractor Post-processing	Database Processing	Values inaccurate, defaulted to N/A
VIDEO	<Park-C03VID-#>	Removable USB video hard drive number	Contractor Post-processing	Database Processing	Untested
IMAGE	(Text)	Filename of .jpg image showing feature	Contractor Post-processing	Automatic Output	Untested
DATE	DD/MM/YY	Data collection date	ARAN Data Collection	Automatic Output	100%
FILENAME	XXXXXXXXXX	Filename of raw data files	ARAN Data Collection	Automatic Output	100%
SECTION	XXXXXX	Route section ID	Route ID Meeting/ARAN Data Collection	Survey Crew Input/Automatic Output	100%
FKEY	9999999	Unique record ID	Contractor Post-processing	Database Processing	100%
VISL_FROM	999999 (millimiles)	Raw MP of first video frame showing feature	Contractor Post-processing	Database Processing	Untested
VISL_TO	999999 (millimiles)	Raw MP of last video frame showing feature	Contractor Post-processing	Database Processing	Untested

FIELD	FORMAT	EXPECTED VALUE	SOURCE	VALIDATION	EXPECTED ACCURACY
IDKEY	(Text)	Unique record ID used by VisiData	Contractor Post-processing	Database Processing	Untested
MP_REF	(Text)	Range of mileage to play in VisiData	Contractor Post-processing	Database Processing	Untested

**PMS 20, PMS Mile & PMS Visidata Tables Metadata:**

FIELD	FORMAT	EXPECTED VALUE	SOURCE	VALIDATION	EXPECTED ACCURACY
RIP_CYCLE	X	3, for data collection cycle 3	Route ID Meeting	FHWA Determination	100%
STATE	XX	State where route is located	Route ID Meeting	Park Input/FHWA Determination	Untested. (1)
PARK_ALPHA	XXXX	Park alpha code	Route ID Meeting	NPS References	Untested
PARK_NO	XXXX	Park numeric code	Route ID Meeting	NPS References	Untested
RTE_NO	XXXXXX	Route number	Route ID Meeting	Park Input/FHWA Classification	Untested
FUNCT_CLASS	X	Route functional class	Route ID Meeting	Park Input/FHWA Classification	Untested
DIRECTION	XXX	Survey lane: PRI (primary) or OPP (opposite)	Route ID Meeting	Park Input/FHWA Determination	Untested
BEG_MP	999.999 (miles)	MP at start of road interval described by database record	Contractor Post-processing	Database Processing	100% (3)
END_MP	999.999 (miles)	MP at end of road interval described by database record	Contractor Post-processing	Database Processing	100% (3)
INT_LENGTH	999.9 (ft)	Length of road interval as aggregated for data table	Contractor Post-processing	Database Processing	100%
RTE_LENGTH	999.999 (miles)	Collected route length	ARAN Data Collection	Automatic Output	100%
NO_LANES	X	Number of lanes in route	ARAN Data Collection	Survey Crew Input	Untested. (1)
LANE_NO	X	Data collection lane	Contractor Post-processing	Database Processing	Untested
WX_LANE_WIDTH	99.999 (ft)	WiseCrax (crack detection software) analysis width	Contractor Post-processing	Automatic Output	Untested
LANE_WIDTH	99.999 (ft)	Width of lane	Contractor Post-processing	Video Processing	Untested
PAVE_WIDTH	99.999 (ft)	Full pavement width	Contractor Post-processing	Video Processing	Untested
SHLD_WIDTH_L	99.999 (ft)	Left shoulder width	Contractor Post-processing	Video Processing	Untested
SHLD_WIDTH_R	99.999 (ft)	Right shoulder width	Contractor Post-processing	Video Processing	Untested
SHLD_COND_L	XXXX	Left shoulder condition	ARAN Data Collection	Survey Crew Input	Untested
SHLD_COND_R	XXXX	Right shoulder condition	ARAN Data Collection	Survey Crew Input	Untested
DRAIN_COND_L	XXXX	Left drainage condition	ARAN Data Collection	Survey Crew Input	Untested
DRAIN_COND_R	XXXX	Right drainage condition	ARAN Data Collection	Survey Crew Input	Untested
SURF_TYPE	XX	Surface type of route	ARAN Data Collection	Survey Crew Input	Untested. (1)
PCR	999	Pavement Condition Rating	Contractor Post-processing	Database Processing	100% for calculation (6)
RCI	999	Roughness Condition Index; -1 if invalid IRI	Contractor Post-processing	Database Processing	100% for calculation

FIELD	FORMAT	EXPECTED VALUE	SOURCE	VALIDATION	EXPECTED ACCURACY
SCR	999	Surface Condition Rating	Contractor Post-processing	Database Processing	100% for calculation (6)
IRI_AVG	999.9 (inches/mile)	Average IRI	Contractor Post-processing	Database Processing	Untested
IRI_SD	999.9 (inches/mile)	IRI standard deviation	Contractor Post-processing	Database Processing	Untested
IRI_L	999.9 (inches/mile)	Left wheel path IRI	ARAN Data Collection	Automatic Output	Untested
IRI_R	999.9 (inches/mile)	Right wheel path IRI	ARAN Data Collection	Automatic Output	Untested
IRI_FLAG	0 or -1	-1 if invalid IRI data	Contractor Post-processing	Database Processing	Untested
RUT_INDEX	999	Rut index	Contractor Post-processing	Database Processing	100% for calculation (6)
RUT_AVG	99.99 (inches)	Average rut depth of both wheelpaths	Contractor Post-processing	Database Processing	Untested (6)
RUT_MAX	99.99 (inches)	Maximum rut depth of both wheelpaths	Contractor Post-processing	Database Processing	Untested (6)
RUT_SD	9.9	Rut depth standard deviation	Contractor Post-processing	Database Processing	Untested (6)
RUT_LOW	999 (%)	Percent of low severity ruts (on a 0-200% scale) in both wheelpaths	Contractor Post-processing	Database Processing	Untested (6)
RUT_MED	999 (%)	Percent of medium severity ruts (on a 0-200% scale) in both wheelpaths	Contractor Post-processing	Database Processing	Untested (6)
RUT_HI	999 (%)	Percent of high severity ruts (on a 0-200% scale) in both wheelpaths	Contractor Post-processing	Database Processing	Untested (6)
XFALL	999.9 (% slope)	Cross fall at start of road interval	ARAN Data Collection	Automatic Output	Precise but inaccurate. Not reported in Cycle 4
GRADE	999.9 (% slope)	Grade at start of road interval	ARAN Data Collection	Automatic Output	Precise but inaccurate. Not reported in Cycle 4
AC_INDEX	999	Alligator cracking index	Contractor Post-processing	Database Processing	100% for calculation (6)
AC_LOW	999.9999 (%)	Percent of WiseCrax measured lane area with low-severity alligator cracking	Contractor Post-processing	Automatic Output	(6) (7)
AC_MED	999.9999 (%)	Percent of WiseCrax measured lane area with medium-severity alligator cracking	Contractor Post-processing	Automatic Output	(6) (7)
AC_HI	999.9999 (%)	Percent of WiseCrax measured lane area with high-severity alligator cracking	Contractor Post-processing	Automatic Output	(6) (7)
LC_INDEX	999	Longitudinal cracking index	Contractor Post-processing	Database Processing	100% for calculation (6)
LC_LOW	999.99 (%)	Low-severity longitudinal cracking in lane as a percentage of road interval length	Contractor Post-processing	Automatic Output	(6) (7)
LC_MED	999.99 (%)	Medium-severity longitudinal cracking in lane as a percentage of road interval length	Contractor Post-processing	Automatic Output	(6) (7)
LC_HI	999.99 (%)	High-severity longitudinal cracking in lane as a percentage of road interval length	Contractor Post-processing	Automatic Output	(6) (7)
TC_INDEX	999	Transverse cracking index	Contractor Post-processing	Database Processing	100% for calculation (6)
TC_LOW	999.99 (cracks)	Count of low-severity transverse cracks, where one crack unit equals the WiseCrax measured lane width	Contractor Post-processing	Automatic Output	(6) (7)
TC_MED	999.99 (cracks)	Count of medium-severity transverse cracks, where one crack unit equals the WiseCrax measured lane width	Contractor Post-processing	Automatic Output	(6) (7)
TC_HI	999.99 (cracks)	Count of high-severity transverse cracks, where one crack unit equals the WiseCrax measured lane width	Contractor Post-processing	Automatic Output	(6) (7)
PATCH_INDEX	999	Patching index	Contractor Post-processing	Database Processing	100% for calculation (6)

FIELD	FORMAT	EXPECTED VALUE	SOURCE	VALIDATION	EXPECTED ACCURACY
PATCHING	999.9999 (%)	Percent of WiseCrax measured lane area affected by patching	Contractor Post-processing	Manual Pavement Video Processing	Untested (6)
GPS_LAT	999.9999999	Latitude coordinate	ARAN Data Collection	Automatic Output	See GPS Metadata sheet distributed with data
GPS_LON	-999.9999999	Longitude coordinate	ARAN Data Collection	Automatic Output	See GPS Metadata sheet distributed with data
GPS_ELEV	999999.9	Elevation	ARAN Data Collection	Automatic Output	See GPS Metadata sheet distributed with data
GPS_MODE	XXX	GPS mode during collection	ARAN Data Collection	Automatic Output	See GPS Metadata sheet distributed with data
VIDEO	<Par/>C03VID<#>	Removable USB video hard drive number	Contractor Post-processing	Database Processing	Untested
IMAGE	(Text)	Filename of .jpg image showing road interval	Contractor Post-processing	Automatic Output	Untested
SPEED	999 (miles/hour)	Average ARAN speed during data collection	ARAN Data Collection	Automatic Output	Untested
BRIDGE_FLAG	0 or 1	Flag indicating presence of bridge in interval	ARAN Data Collection	Survey Crew Input	Untested
CONSTR_FLAG	0 or 1	Flag indicating construction in interval	ARAN Data Collection	Survey Crew Input	Untested
LANEDEV_FLG	0 or 1	Flag indicating lane deviation in interval	ARAN Data Collection	Survey Crew Input	Untested
DATE	DD/MM/YY	Data collection date	ARAN Data Collection	Automatic Output	100%
NODISTRESS	0 OR 1	Flag indicating absence of pavement distress	Contractor Post-processing	Database Processing	100%
FILENAME	XXXXXXXXXX	Filename of raw data files	ARAN Data Collection	Automatic Output	100%
SECTION	XXXXXX	Route section ID	Route ID Meeting/ARAN Data Collection	Survey Crew Input/Automatic Output	100%
FKEY	9999999	Unique record ID	Contractor Post-processing	Database Processing	100%
VISL_FROM	999999 (millimiles)	Raw MP of first video frame in section	Contractor Post-processing	Database Processing	Untested
VISL_TO	999999 (millimiles)	Raw MP of last video frame in section	Contractor Post-processing	Database Processing	Untested
IDKEY	(Text)	Unique record ID used by VisiData	Contractor Post-processing	Database Processing	Untested
MP_REF	(Text)	Range of mileage to play in VisiData	Contractor Post-processing	Database Processing	Untested

### **Cycle 3 Shapefile Metadata**

Metadata is provided for all shapefiles used for the creation of RIP report documents. The metadata for each shapefile associated with the park can be found in Section 10 of the PDF report provided on your park CD.

All shapefiles have the following spatial characteristics:

*Geographic\_Coordinate\_Units*: Decimal degrees  
*Spheroid*: WGS 1984







# bicy\_seg

Metadata also available as

## Metadata:

- [Identification Information](#)
  - [Data Quality Information](#)
  - [Spatial Data Organization Information](#)
  - [Spatial Reference Information](#)
  - [Entity and Attribute Information](#)
  - [Distribution Information](#)
  - [Metadata Reference Information](#)
- 

### *Identification\_Information:*

#### *Citation:*

##### *Citation\_Information:*

*Originator:* The TSR Group

*Publication\_Date:* 2005

*Title:* bicy\_seg

*Geospatial\_Data\_Presentation\_Form:* vector digital data

*Online\_Linkage:* Not Available

#### *Description:*

*Abstract:* Routes

*Purpose:* Road Inventory Program

##### *Supplemental\_Information:*

Data created by The TSR Group from GPS coordinates provided in the PMS\_20 table. The shapefile is processed to aggregate adjacent segments with the same PCR rating.

#### *Time\_Period\_of\_Content:*

##### *Time\_Period\_Information:*

##### *Single\_Date/Time:*

*Calendar\_Date:* 2005

*Currentness\_Reference:* ground condition

#### *Status:*

*Progress:* Complete

*Maintenance\_and\_Update\_Frequency:* As per RIP cycle

#### *Spatial\_Domain:*

##### *Bounding\_Coordinates:*

*West\_Bounding\_Coordinate:* -81.363312

*East\_Bounding\_Coordinate:* -80.830040

*North\_Bounding\_Coordinate:* 25.910347

*South\_Bounding\_Coordinate:* 25.746359

#### *Keywords:*

##### *Theme:*

*Theme\_Keyword\_Thesaurus:* BICY

*Theme\_Keyword:* BICY

*Access\_Constraints:* None

*Use\_Constraints:* Redistribution needs permission from EFLHD/NPS

*Point\_of\_Contact:*

*Contact\_Information:*

*Contact\_Person\_Primary:*

*Contact\_Person:* Dan VanGilder

*Contact\_Organization:* EFLHD

*Contact\_Position:* GIS Coordinator

*Contact\_Address:*

*Address\_Type:* mailing and physical address

*Address:* 21400 Ridgetop Circle

*City:* Sterling

*State\_or\_Province:* Virginia

*Postal\_Code:* 20166

*Country:* United States

*Contact\_Voice\_Telephone:* 703-404-6361

*Contact\_Electronic\_Mail\_Address:* dvangilder@fhwa.dot.gov

*Native\_Data\_Set\_Environment:*

Microsoft Windows 2000 Version 5.1 (Build 2600) Service Pack 2; ESRI ArcCatalog  
8.3.0.800

---

*Data\_Quality\_Information:*

*Attribute\_Accuracy:*

*Attribute\_Accuracy\_Report:* Good

*Completeness\_Report:* Complete for routes

*Lineage:*

*Source\_Information:*

*Type\_of\_Source\_Media:* GPS

---

*Spatial\_Data\_Organization\_Information:*

*Direct\_Spatial\_Reference\_Method:* Vector

*Point\_and\_Vector\_Object\_Information:*

*SDTS\_Terms\_Description:*

*SDTS\_Point\_and\_Vector\_Object\_Type:* String

*Point\_and\_Vector\_Object\_Count:* 240

---

*Spatial\_Reference\_Information:*

*Horizontal\_Coordinate\_System\_Definition:*

*Geographic:*

*Latitude\_Resolution:* 0.000000

*Longitude\_Resolution:* 0.000000

*Geographic\_Coordinate\_Units:* Decimal degrees

*Geodetic\_Model:*

*Horizontal\_Datum\_Name:* North American Datum of 1927

*Ellipsoid\_Name:* Clarke 1866

*Semi-major\_Axis*: 6378206.400000  
*Denominator\_of\_Flattening\_Ratio*: 294.978698

---

*Entity\_and\_Attribute\_Information*:

*Detailed\_Description*:

*Entity\_Type*:

*Entity\_Type\_Label*: bicy\_seg

*Attribute*:

*Attribute\_Label*: FID

*Attribute\_Definition*: Internal feature number.

*Attribute\_Definition\_Source*: ESRI

*Attribute\_Domain\_Values*:

*Unrepresentable\_Domain*:

Sequential unique whole numbers that are automatically generated.

*Attribute*:

*Attribute\_Label*: Shape

*Attribute\_Definition*: Feature geometry.

*Attribute\_Definition\_Source*: ESRI

*Attribute\_Domain\_Values*:

*Unrepresentable\_Domain*: Coordinates defining the features.

*Attribute*:

*Attribute\_Label*: FNODE\_

*Attribute\_Definition*: Length of feature

*Attribute\_Definition\_Source*: ESRI

*Attribute*:

*Attribute\_Label*: TNODE\_

*Attribute*:

*Attribute\_Label*: LPOLY\_

*Attribute\_Definition*: Route number

*Attribute\_Definition\_Source*: Route ID Meeting

*Attribute*:

*Attribute\_Label*: RPOLY\_

*Attribute\_Definition*: Collected route length

*Attribute\_Definition\_Source*: ARAN Data Collection

*Attribute*:

*Attribute\_Label*: LENGTH

*Attribute\_Definition*:

Numeric PCR definition. Average PCR value based on programatic averaging of adjacent segments.

*Attribute\_Domain\_Values*:

*Range\_Domain*:

*Range\_Domain\_Minimum*: 0

*Range\_Domain\_Maximum*: 100

*Attribute*:

*Attribute\_Label*: BICY\_SEG\_

*Attribute\_Definition*: Verbal PCR definition based on value in PCRAV field

*Attribute\_Domain\_Values*:

*Enumerated\_Domain*:

*Enumerated\_Domain\_Value*: POOR

*Enumerated\_Domain\_Value\_Definition:* PCR value <= 60  
*Enumerated\_Domain:*  
*Enumerated\_Domain\_Value:* FAIR  
*Enumerated\_Domain\_Value\_Definition:* PCR value 61-84  
*Enumerated\_Domain:*  
*Enumerated\_Domain\_Value:* GOOD  
*Enumerated\_Domain\_Value\_Definition:* PCR value 85-94  
*Enumerated\_Domain:*  
*Enumerated\_Domain\_Value:* EXCELLENT  
*Enumerated\_Domain\_Value\_Definition:* PCR value 95-100

*Attribute:*

*Attribute\_Label:* BICY\_SEG\_I  
*Attribute\_Definition:* Indicates whether feature has been edited for graphic purposes.  
*Attribute\_Domain\_Values:*  
*Enumerated\_Domain:*  
*Enumerated\_Domain\_Value:* 1  
*Enumerated\_Domain\_Value\_Definition:* Edit has been made to feature for graphic purposes  
*Enumerated\_Domain:*  
*Enumerated\_Domain\_Value:* 0  
*Enumerated\_Domain\_Value\_Definition:* No edit made to feature.

*Attribute:*

*Attribute\_Label:* ID

*Attribute:*

*Attribute\_Label:* RTE\_NO

*Attribute:*

*Attribute\_Label:* BMP

*Attribute:*

*Attribute\_Label:* EMP

*Attribute:*

*Attribute\_Label:* PCR

*Attribute:*

*Attribute\_Label:* PCR\_RATE

*Attribute:*

*Attribute\_Label:* RT\_LENGTH

*Attribute:*

*Attribute\_Label:* PCRMI

*Attribute:*

*Attribute\_Label:* PCR\_RATEMI

*Attribute:*

*Attribute\_Label:* PCR\_RATEAV

*Attribute:*

*Attribute\_Label:* PCRAV

*Attribute:*

*Attribute\_Label:* TSR\_EDIT

*Distribution\_Information:*

*Resource\_Description:* Downloadable Data

*Standard\_Order\_Process:*

*Digital\_Form:*  
*Digital\_Transfer\_Information:*  
*Transfer\_Size:* 0.016

---

*Metadata\_Reference\_Information:*  
*Metadata\_Date:* 20060123  
*Metadata\_Contact:*  
*Contact\_Information:*  
*Contact\_Organization\_Primary:*  
*Contact\_Organization:* EFLHD Sterling  
*Contact\_Person:* Dan VanGilder  
*Contact\_Position:* GIS Coordinator  
*Contact\_Address:*  
*Address\_Type:* mailing and physical address  
*City:* Sterling  
*State\_or\_Province:* Virginia  
*Postal\_Code:* 20166  
*Country:* United States  
*Contact\_Voice\_Telephone:* 703-404-6361  
*Contact\_Electronic\_Mail\_Address:* dvangilder@fhwa.dot.gov  
*Metadata\_Standard\_Name:* FGDC Content Standards for Digital Geospatial Metadata  
*Metadata\_Standard\_Version:* FGDC-STD-001-1998  
*Metadata\_Time\_Convention:* local time  
*Metadata\_Extensions:*  
*Online\_Linkage:* <<http://www.esri.com/metadata/esriprof80.html>>  
*Profile\_Name:* ESRI Metadata Profile

---

Generated by [mp](#) version 2.7.33 on Mon Jan 23 13:28:08 2006

# bicy\_mi\_pt

Metadata also available as

## Metadata:

- [Identification Information](#)
  - [Data Quality Information](#)
  - [Spatial Data Organization Information](#)
  - [Spatial Reference Information](#)
  - [Entity and Attribute Information](#)
  - [Distribution Information](#)
  - [Metadata Reference Information](#)
- 

### *Identification\_Information:*

#### *Citation:*

##### *Citation\_Information:*

*Originator:* The TSR Group

*Publication\_Date:* 2005

*Title:* bicy\_mi\_pt

*Geospatial\_Data\_Presentation\_Form:* vector digital data

*Online\_Linkage:* Not Available

#### *Description:*

*Abstract:* Mile Points

*Purpose:* Road Inventory Program

##### *Supplemental\_Information:*

Data created by The TSR Group from GPS coordinates provided in the PMS\_20 table. All attributes found in the PMS\_20 table are found on the miles points.

#### *Time\_Period\_of\_Content:*

##### *Time\_Period\_Information:*

##### *Single\_Date/Time:*

*Calendar\_Date:* 2005

*Currentness\_Reference:* ground condition

#### *Status:*

*Progress:* Complete

*Maintenance\_and\_Update\_Frequency:* Not Available

#### *Spatial\_Domain:*

##### *Bounding\_Coordinates:*

*West\_Bounding\_Coordinate:* -81.357941

*East\_Bounding\_Coordinate:* -80.830040

*North\_Bounding\_Coordinate:* 25.908484

*South\_Bounding\_Coordinate:* 25.746403

#### *Keywords:*

##### *Theme:*

*Theme\_Keyword\_Thesaurus:* BICY

*Theme\_Keyword:* BICY

*Access\_Constraints:* None

*Use\_Constraints:* Redistribution needs permission from EFLHD/NPS

*Point\_of\_Contact:*

*Contact\_Information:*

*Contact\_Person\_Primary:*

*Contact\_Person:* Dan VanGilder

*Contact\_Organization:* EFLHD Sterling

*Contact\_Position:* GIS Coordinator

*Contact\_Address:*

*Address\_Type:* mailing and physical address

*Address:* 21400 Ridgetop Circle

*City:* Sterling

*State\_or\_Province:* Virginia

*Postal\_Code:* 20166

*Country:* United States

*Contact\_Voice\_Telephone:* 703-404-6361

*Contact\_Electronic\_Mail\_Address:* dvangilder@fhwa.dot.gov

*Native\_Data\_Set\_Environment:*

Microsoft Windows 2000 Version 5.1 (Build 2600) Service Pack 2; ESRI ArcCatalog 8.3.0.800

---

*Data\_Quality\_Information:*

*Attribute\_Accuracy:*

*Attribute\_Accuracy\_Report:* Good

*Completeness\_Report:* Complete for mile points

*Lineage:*

*Source\_Information:*

*Type\_of\_Source\_Media:* GPS

---

*Spatial\_Data\_Organization\_Information:*

*Direct\_Spatial\_Reference\_Method:* Vector

*Point\_and\_Vector\_Object\_Information:*

*SDTS\_Terms\_Description:*

*SDTS\_Point\_and\_Vector\_Object\_Type:* Entity point

*Point\_and\_Vector\_Object\_Count:* 49

---

*Spatial\_Reference\_Information:*

*Horizontal\_Coordinate\_System\_Definition:*

*Geographic:*

*Latitude\_Resolution:* 0.000000

*Longitude\_Resolution:* 0.000000

*Geographic\_Coordinate\_Units:* Decimal degrees

*Geodetic\_Model:*

*Horizontal\_Datum\_Name:* North American Datum of 1927

*Ellipsoid\_Name:* Clarke 1866

*Semi-major\_Axis:* 6378206.400000

*Denominator\_of\_Flattening\_Ratio:* 294.978698

---

*Entity\_and\_Attribute\_Information:*

*Detailed\_Description:*

*Entity\_Type:*

*Entity\_Type\_Label:* bicy\_mi\_pt

*Attribute:*

*Attribute\_Label:* FID

*Attribute\_Definition:* Internal feature number.

*Attribute\_Definition\_Source:* ESRI

*Attribute\_Domain\_Values:*

*Unrepresentable\_Domain:*

Sequential unique whole numbers that are automatically generated.

*Attribute:*

*Attribute\_Label:* Shape

*Attribute\_Definition:* Feature geometry.

*Attribute\_Definition\_Source:* ESRI

*Attribute\_Domain\_Values:*

*Unrepresentable\_Domain:* Coordinates defining the features.

*Attribute:*

*Attribute\_Label:* RIP\_CYCLE

*Attribute\_Definition:* 3, for data collection cycle 3

*Attribute\_Definition\_Source:* Route ID Meeting

*Attribute:*

*Attribute\_Label:* STATE

*Attribute\_Definition:* State where route is located

*Attribute\_Definition\_Source:* Route ID Meeting

*Attribute:*

*Attribute\_Label:* PARK\_ALPHA

*Attribute\_Definition:* Park alpha code

*Attribute\_Definition\_Source:* Route ID Meeting

*Attribute:*

*Attribute\_Label:* PARK\_NO

*Attribute\_Definition:* Park numeric code

*Attribute\_Definition\_Source:* Route ID Meeting

*Attribute:*

*Attribute\_Label:* RTE\_NO

*Attribute\_Definition:* Route number

*Attribute\_Definition\_Source:* Route ID Meeting

*Attribute:*

*Attribute\_Label:* FUNCT\_CLAS

*Attribute\_Definition:* Route functional class

*Attribute\_Definition\_Source:* Route ID Meeting

*Attribute:*

*Attribute\_Label:* DIRECTION

*Attribute\_Definition:* Survey lane: PRI (primary) or OPP (opposite)

*Attribute\_Definition\_Source:* Route ID Meeting

*Attribute:*

*Attribute\_Label:* BEG\_MP



*Attribute\_Definition:* MP at end of road interval described by database record

*Attribute\_Definition\_Source:* Contractor Post-processing

*Attribute:*

*Attribute\_Label:* END\_MP

*Attribute\_Definition:* MP at end of road interval described by database record

*Attribute\_Definition\_Source:* Contractor Post-processing

*Attribute:*

*Attribute\_Label:* INT\_LENGTH

*Attribute\_Definition:* Length of road interval as aggregated from data table

*Attribute\_Definition\_Source:* Contractor Post-processing

*Attribute:*

*Attribute\_Label:* RTE\_LENGTH

*Attribute\_Definition:* Collected route length

*Attribute\_Definition\_Source:* ARAN Data Collection

*Attribute:*

*Attribute\_Label:* NO\_LANES

*Attribute\_Definition:* Number of lanes in route

*Attribute\_Definition\_Source:* ARAN Data Collection

*Attribute:*

*Attribute\_Label:* LANE\_NO

*Attribute\_Definition:* Data collection lane

*Attribute\_Definition\_Source:* Contractor Post-processing

*Attribute:*

*Attribute\_Label:* WX\_LANE\_WI

*Attribute\_Definition:* WiseCrax (crack detection software) analysis width

*Attribute\_Definition\_Source:* Contractor Post-processing

*Attribute:*

*Attribute\_Label:* LANE\_WIDTH

*Attribute\_Definition:* Width of lane

*Attribute\_Definition\_Source:* Contractor Post-processing

*Attribute:*

*Attribute\_Label:* PAVE\_WIDTH

*Attribute\_Definition:* Full pavement width

*Attribute\_Definition\_Source:* Contractor Post-processing

*Attribute:*

*Attribute\_Label:* SHLD\_WIDTH

*Attribute\_Definition:* Left shoulder width

*Attribute\_Definition\_Source:* Contractor Post-processing

*Attribute:*

*Attribute\_Label:* SHLD\_WID\_1

*Attribute\_Definition:* Right shoulder width

*Attribute\_Definition\_Source:* Contractor Post-processing

*Attribute:*

*Attribute\_Label:* SHLD\_COND\_

*Attribute\_Definition:* Left shoulder condition

*Attribute\_Definition\_Source:* ARAN Data Collection

*Attribute:*

*Attribute\_Label:* SHLD\_COND1

*Attribute\_Definition:* Right shoulder condition

*Attribute\_Definition\_Source:* ARAN Data Collection

*Attribute:*

*Attribute\_Label:* DRAIN\_COND  
*Attribute\_Definition:* Left drainage condition  
*Attribute\_Definition\_Source:* ARAN Data Collection

*Attribute:*

*Attribute\_Label:* DRAIN\_CO\_1  
*Attribute\_Definition:* Right drainage condition  
*Attribute\_Definition\_Source:* ARAN Data Collection

*Attribute:*

*Attribute\_Label:* SURF\_TYPE  
*Attribute\_Definition:* Surface type of route  
*Attribute\_Definition\_Source:* ARAN Data Collection

*Attribute:*

*Attribute\_Label:* PCR  
*Attribute\_Definition:* Pavement Condition Rating  
*Attribute\_Definition\_Source:* Contractor Post-processing

*Attribute:*

*Attribute\_Label:* RCI  
*Attribute\_Definition:* Roughness Condition Index; -1 if invalid IRI  
*Attribute\_Definition\_Source:* Contractor Post-processing

*Attribute:*

*Attribute\_Label:* SCR  
*Attribute\_Definition:* Surface Condition Rating  
*Attribute\_Definition\_Source:* Contractor Post-processing

*Attribute:*

*Attribute\_Label:* IRI\_AVG  
*Attribute\_Definition:* Average IRI  
*Attribute\_Definition\_Source:* Contractor Post-processing

*Attribute:*

*Attribute\_Label:* IRI\_SD  
*Attribute\_Definition:* IRI Standard Deviation  
*Attribute\_Definition\_Source:* Contractor Post-processing

*Attribute:*

*Attribute\_Label:* IRI\_L  
*Attribute\_Definition:* Left wheel path IRI  
*Attribute\_Definition\_Source:* ARAN Data Collection

*Attribute:*

*Attribute\_Label:* IRI\_R  
*Attribute\_Definition:* Right wheel path IRI  
*Attribute\_Definition\_Source:* ARAN Data Collection

*Attribute:*

*Attribute\_Label:* IRI\_FLAG  
*Attribute\_Definition:* -1 if invalid IRI data  
*Attribute\_Definition\_Source:* Contractor Post-processing

*Attribute:*

*Attribute\_Label:* RUT\_INDEX  
*Attribute\_Definition:* Rut index  
*Attribute\_Definition\_Source:* Contractor Post-processing

*Attribute:*

*Attribute\_Label:* RUT\_AVG  
*Attribute\_Definition:* Average rut depth of both wheelpaths  
*Attribute\_Definition\_Source:* Contractor Post-processing

*Attribute:**Attribute\_Label:* RUT\_MAX*Attribute\_Definition:* Maximum rut depth of both wheelpaths*Attribute\_Definition\_Source:* Contractor Post-processing*Attribute:**Attribute\_Label:* RUT\_SD*Attribute\_Definition:* Rut depth standard deviation*Attribute\_Definition\_Source:* Contractor Post-processing*Attribute:**Attribute\_Label:* RUT\_LOW*Attribute\_Definition:*

Percent of low severity ruts (on a 0-200% scale) in both wheelpaths

*Attribute\_Definition\_Source:* Contractor Post-processing*Attribute:**Attribute\_Label:* RUT\_MED*Attribute\_Definition:*

Percent of medium severity ruts (on a 0-200% scale) in both wheelpaths

*Attribute\_Definition\_Source:* Contractor Post-processing*Attribute:**Attribute\_Label:* RUT\_HI*Attribute\_Definition:*

Percent of high severity ruts (on a 0-200% scale) in both wheelpaths

*Attribute\_Definition\_Source:* Contractor Post-processing*Attribute:**Attribute\_Label:* XFALL*Attribute\_Definition:* Cross fall at start of road interval*Attribute\_Definition\_Source:* ARAN Data Collection*Attribute:**Attribute\_Label:* GRADE*Attribute\_Definition:* Grade at start of road interval*Attribute\_Definition\_Source:* ARAN Data Collection*Attribute:**Attribute\_Label:* AC\_INDEX*Attribute\_Definition:* Alligator cracking index*Attribute\_Definition\_Source:* Contractor Post-processing*Attribute:**Attribute\_Label:* AC\_LOW*Attribute\_Definition:*

Percent of WiseCrax measured lane area with low-severity alligator cracking

*Attribute\_Definition\_Source:* Contractor Post-processing*Attribute:**Attribute\_Label:* AC\_MED*Attribute\_Definition:*

Percent of WiseCrax measured lane area with medium-severity alligator cracking

*Attribute\_Definition\_Source:* Contractor Post-processing*Attribute:**Attribute\_Label:* AC\_HI*Attribute\_Definition:*

Percent of WiseCrax measured lane area with high-severity alligator cracking

*Attribute\_Definition\_Source:* Contractor Post-processing

*Attribute:**Attribute\_Label:* LC\_INDEX*Attribute\_Definition:* Longitudinal cracking index*Attribute\_Definition\_Source:* Contractor Post-processing*Attribute:**Attribute\_Label:* LC\_LOW*Attribute\_Definition:*

Low-severity longitudinal cracking in lane as a percentage of road interval length

*Attribute\_Definition\_Source:* Contractor Post-processing*Attribute:**Attribute\_Label:* LC\_MED*Attribute\_Definition:*

Medium-severity longitudinal cracking in lane as a percentage of road interval length

*Attribute\_Definition\_Source:* Contractor Post-processing*Attribute:**Attribute\_Label:* LC\_HI*Attribute\_Definition:*

High-severity longitudinal cracking in lane as a percentage of road interval length

*Attribute\_Definition\_Source:* Contractor Post-processing*Attribute:**Attribute\_Label:* TC\_INDEX*Attribute\_Definition:* Transverse cracking index*Attribute\_Definition\_Source:* Contractor Post-processing*Attribute:**Attribute\_Label:* TC\_LOW*Attribute\_Definition:*

Count of low-severity transverse cracks, where one crack unit equals the WiseCrax measured land width

*Attribute\_Definition\_Source:* Contractor Post-processing*Attribute:**Attribute\_Label:* TC\_MED*Attribute\_Definition:*

Count of medium-severity transverse cracks, where one crack unit equals the WiseCrax measured land width

*Attribute\_Definition\_Source:* Contractor Post-processing*Attribute:**Attribute\_Label:* TC\_HI*Attribute\_Definition:*

Count of high-severity transverse cracks, where one crack unit equals the WiseCrax measured land width

*Attribute\_Definition\_Source:* Contractor Post-processing*Attribute:**Attribute\_Label:* PATCH\_INDE*Attribute\_Definition:* Patching index*Attribute\_Definition\_Source:* Contractor Post-processing*Attribute:**Attribute\_Label:* PATCHING*Attribute\_Definition:* Percent of WiseCrax measured lane area affected by patching

*Attribute\_Definition\_Source*: Contractor Post-processing  
*Attribute*:  
*Attribute\_Label*: GPS\_LAT  
*Attribute\_Definition*: Latitude coordinate  
*Attribute\_Definition\_Source*: ARAN Data Collection  
*Attribute*:  
*Attribute\_Label*: GPS\_LON  
*Attribute\_Definition*: Longitude coordinate  
*Attribute\_Definition\_Source*: ARAN Data Collection  
*Attribute*:  
*Attribute\_Label*: GPS\_ELEV  
*Attribute\_Definition*: Elevation  
*Attribute\_Definition\_Source*: ARAN Data Collection  
*Attribute*:  
*Attribute\_Label*: GPS\_MODE  
*Attribute\_Definition*: GPS mode during collection  
*Attribute\_Definition\_Source*: ARAN Data Collection  
*Attribute*:  
*Attribute\_Label*: VIDEO  
*Attribute\_Definition*: Removable USB video hard drive number  
*Attribute\_Definition\_Source*: Contractor Post-processing  
*Attribute*:  
*Attribute\_Label*: IMAGE  
*Attribute\_Definition*: Filename of .jpg image showing road interval  
*Attribute\_Definition\_Source*: Contractor Post-processing  
*Attribute*:  
*Attribute\_Label*: SPEED  
*Attribute\_Definition*: Average ARAN speed during data collection  
*Attribute\_Definition\_Source*: ARAN Data Collection  
*Attribute*:  
*Attribute\_Label*: BRIDGE\_FL  
*Attribute\_Definition*: Flag indicating presence of bridge in interval  
*Attribute\_Definition\_Source*: ARAN Data Collection  
*Attribute*:  
*Attribute\_Label*: CONSTR\_FL  
*Attribute\_Definition*: Flag indicating construction in interval  
*Attribute\_Definition\_Source*: ARAN Data Collection  
*Attribute*:  
*Attribute\_Label*: LANEDEV\_FL  
*Attribute\_Definition*: Flag indicating lane deviation in interval  
*Attribute\_Definition\_Source*: ARAN Data Collection  
*Attribute*:  
*Attribute\_Label*: DATE  
*Attribute\_Definition*: Data collection date  
*Attribute\_Definition\_Source*: ARAN Data Collection  
*Attribute*:  
*Attribute\_Label*: NODISTRESS  
*Attribute\_Definition*: Flag indicating absence of pavement distress  
*Attribute\_Definition\_Source*: Contractor Post-processing  
*Attribute*:  
*Attribute\_Label*: FILENAME

*Attribute\_Definition:* Filename of raw data files  
*Attribute\_Definition\_Source:* ARAN Data Collection

*Attribute:*

*Attribute\_Label:* SECTION  
*Attribute\_Definition:* route section ID  
*Attribute\_Definition\_Source:* Route ID Meeting / ARAN Data Collection

*Attribute:*

*Attribute\_Label:* FKEY  
*Attribute\_Definition:* Unique record ID  
*Attribute\_Definition\_Source:* Contractor Post-processing

*Attribute:*

*Attribute\_Label:* VISI\_FROM  
*Attribute\_Definition:* Raw MP of first video frame in section  
*Attribute\_Definition\_Source:* Contractor Post-processing

*Attribute:*

*Attribute\_Label:* VISI\_TO  
*Attribute\_Definition:* Raw MP of last video frame in section  
*Attribute\_Definition\_Source:* Contractor Post-processing

*Attribute:*

*Attribute\_Label:* IDKEY  
*Attribute\_Definition:* Unique record ID used by VisiData  
*Attribute\_Definition\_Source:* Contractor Post-processing

*Attribute:*

*Attribute\_Label:* MP\_REF  
*Attribute\_Definition:* Range of mileage to play in VisiData  
*Attribute\_Definition\_Source:* Contractor Post-processing

---

*Distribution\_Information:*

*Resource\_Description:* Downloadable Data

*Standard\_Order\_Process:*

*Digital\_Form:*

*Digital\_Transfer\_Information:*

*Transfer\_Size:* 0.030

---

*Metadata\_Reference\_Information:*

*Metadata\_Date:* 20060123

*Metadata\_Contact:*

*Contact\_Information:*

*Contact\_Organization\_Primary:*

*Contact\_Organization:* EFLHD Sterling

*Contact\_Person:* Dan VanGilder

*Contact\_Position:* GIS Coordinator

*Contact\_Address:*

*Address\_Type:* mailing and physical address

*Address:* 21400 Ridgetop Circle

*City:* Sterling

*State\_or\_Province:* Virginia

*Postal\_Code:* 20166

*Country:* United States

*Contact\_Voice\_Telephone:* 703-404-6361

*Contact\_Electronic\_Mail\_Address:* dvangilder@fhwa.dot.gov

*Metadata\_Standard\_Name:* FGDC Content Standards for Digital Geospatial Metadata

*Metadata\_Standard\_Version:* FGDC-STD-001-1998

*Metadata\_Time\_Convention:* local time

*Metadata\_Extensions:*

*Online\_Linkage:* <<http://www.esri.com/metadata/esriprof80.html>>

*Profile\_Name:* ESRI Metadata Profile

---

Generated by [mp](#) version 2.7.33 on Mon Jan 23 13:27:51 2006

# bicy\_mrl\_03\_map

Metadata also available as

## Metadata:

- [Identification Information](#)
  - [Data Quality Information](#)
  - [Spatial Data Organization Information](#)
  - [Spatial Reference Information](#)
  - [Entity and Attribute Information](#)
  - [Distribution Information](#)
  - [Metadata Reference Information](#)
- 

### *Identification\_Information:*

#### *Citation:*

##### *Citation\_Information:*

*Originator:* Eastern Federal Lands Highway Division

*Publication\_Date:* Published Materials

*Title:* bicy\_mrl\_03\_map

*Geospatial\_Data\_Presentation\_Form:* vector digital data

*Online\_Linkage:* Not Available

#### *Description:*

*Abstract:* Copy of Manually Rated Roads - Lines

*Purpose:* Road Inventory Program

##### *Supplemental\_Information:*

This shapefile is a copy of the source manually rated lines shapefile. The features are edited as needed for graphic purposes.

#### *Time\_Period\_of\_Content:*

##### *Time\_Period\_Information:*

##### *Single\_Date/Time:*

*Calendar\_Date:* 6/30/2001

*Currentness\_Reference:* ground condition

#### *Status:*

*Progress:* Complete

*Maintenance\_and\_Update\_Frequency:* As per RIP cycle

#### *Spatial\_Domain:*

##### *Bounding\_Coordinates:*

*West\_Bounding\_Coordinate:* -81.100586

*East\_Bounding\_Coordinate:* -80.949243

*North\_Bounding\_Coordinate:* 25.863585

*South\_Bounding\_Coordinate:* 25.746470

#### *Keywords:*

##### *Theme:*

*Theme\_Keyword\_Thesaurus:* BICY

*Theme\_Keyword:* BICY

*Access\_Constraints:* None



*Use\_Constraints:* Redistribution needs permission from EFLHD/NPS

*Point\_of\_Contact:*

*Contact\_Information:*

*Contact\_Person\_Primary:*

*Contact\_Person:* Dan VanGilder

*Contact\_Organization:* EFLHD

*Contact\_Position:* GIS Coordinator

*Contact\_Address:*

*Address\_Type:* mailing and physical address

*Address:* 21400 Ridgetop Circle

*City:* Sterling

*State\_or\_Province:* Virginia

*Postal\_Code:* 20166

*Country:* United States

*Contact\_Voice\_Telephone:* 703-404-6361

*Contact\_Electronic\_Mail\_Address:* dvangilder@fhwa.dot.gov

*Native\_Data\_Set\_Environment:*

Microsoft Windows 2000 Version 5.1 (Build 2600) Service Pack 2; ESRI ArcCatalog 8.3.0.800

---

*Data\_Quality\_Information:*

*Attribute\_Accuracy:*

*Attribute\_Accuracy\_Report:* Good

*Completeness\_Report:* Complete for parking areas

*Lineage:*

*Source\_Information:*

*Type\_of\_Source\_Media:* GPS

---

*Spatial\_Data\_Organization\_Information:*

*Direct\_Spatial\_Reference\_Method:* Vector

*Point\_and\_Vector\_Object\_Information:*

*SDTS\_Terms\_Description:*

*SDTS\_Point\_and\_Vector\_Object\_Type:* String

*Point\_and\_Vector\_Object\_Count:* 7

---

*Spatial\_Reference\_Information:*

*Horizontal\_Coordinate\_System\_Definition:*

*Geographic:*

*Latitude\_Resolution:* 0.000000

*Longitude\_Resolution:* 0.000000

*Geographic\_Coordinate\_Units:* Decimal degrees

*Geodetic\_Model:*

*Horizontal\_Datum\_Name:* North American Datum of 1927

*Ellipsoid\_Name:* Clarke 1866

*Semi-major\_Axis:* 6378206.400000

*Denominator\_of\_Flattening\_Ratio:* 294.978698

---

*Entity\_and\_Attribute\_Information:*

*Detailed\_Description:*

*Entity\_Type:*

*Entity\_Type\_Label:* bicy\_mrl\_03\_map

*Entity\_Type\_Definition\_Source:* GPS

*Attribute:*

*Attribute\_Label:* FID

*Attribute\_Definition:* Internal feature number.

*Attribute\_Definition\_Source:* ESRI

*Attribute\_Domain\_Values:*

*Enumerated\_Domain:*

*Unrepresentable\_Domain:*

Sequential unique whole numbers that are automatically generated.

*Attribute:*

*Attribute\_Label:* Shape

*Attribute\_Definition:* Feature geometry.

*Attribute\_Definition\_Source:* ESRI

*Attribute\_Domain\_Values:*

*Unrepresentable\_Domain:* Coordinates defining the features.

*Attribute:*

*Attribute\_Label:* PARK\_ALPHA

*Attribute\_Definition:* Park alpha code

*Attribute\_Definition\_Source:* Route ID Meeting

*Attribute:*

*Attribute\_Label:* RTE\_NO

*Attribute\_Definition:* Route Number

*Attribute\_Definition\_Source:* Route ID Meeting

*Attribute:*

*Attribute\_Label:* RTE\_NAME

*Attribute\_Definition:* Route Name

*Attribute\_Definition\_Source:* Route ID Meeting

*Attribute:*

*Attribute\_Label:* SECTION\_

*Attribute\_Definition:* Route Section ID

*Attribute\_Definition\_Source:* Route ID Meeting / ARAN Data Collection

*Attribute:*

*Attribute\_Label:* SURF\_TYPE

*Attribute\_Definition:* Surface type of route

*Attribute\_Definition\_Source:* ARAN Data Collection

*Attribute:*

*Attribute\_Label:* CONDITION

*Attribute\_Definition:* Condition rating

*Attribute\_Domain\_Values:*

*Attribute:*

*Attribute\_Label:* COMMENT

*Attribute\_Definition:* Field comment

*Attribute:*

*Attribute\_Label:* GPS\_DATE  
*Attribute\_Definition:* Date of GPS Collection

*Attribute:*

*Attribute\_Label:* DATAFILE

*Attribute:*

*Attribute\_Label:* PAVE\_WIDTH  
*Attribute\_Definition:* Width of the paved area

*Attribute:*

*Attribute\_Label:* PAVED\_MI  
*Attribute\_Definition:* Calculated paved miles

---

*Distribution\_Information:*

*Resource\_Description:* Downloadable Data

*Standard\_Order\_Process:*

*Digital\_Form:*

*Digital\_Transfer\_Information:*

*Transfer\_Size:* 0.037

---

*Metadata\_Reference\_Information:*

*Metadata\_Date:* 20060123

*Metadata\_Contact:*

*Contact\_Information:*

*Contact\_Organization\_Primary:*

*Contact\_Organization:* EFLHD Sterling

*Contact\_Person:* Dan VanGilder

*Contact\_Position:* GIS Coordinator

*Contact\_Address:*

*Address\_Type:* mailing and physical address

*Address:* 21400 Ridgetop Circle

*City:* Sterling

*State\_or\_Province:* Virginia

*Postal\_Code:* 20166

*Country:* United States

*Contact\_Voice\_Telephone:* 703-404-6361

*Contact\_Electronic\_Mail\_Address:* dvangilder@fhwa.dot.gov

*Metadata\_Standard\_Name:* FGDC Content Standards for Digital Geospatial Metadata

*Metadata\_Standard\_Version:* FGDC-STD-001-1998

*Metadata\_Time\_Convention:* local time

*Metadata\_Extensions:*

*Online\_Linkage:* <<http://www.esri.com/metadata/esriprof80.html>>

*Profile\_Name:* ESRI Metadata Profile

---

Generated by [mp](#) version 2.7.33 on Mon Jan 23 13:26:38 2006

# bicy\_mrl\_03

Metadata also available as

## Metadata:

- [Identification Information](#)
  - [Data Quality Information](#)
  - [Spatial Data Organization Information](#)
  - [Spatial Reference Information](#)
  - [Entity and Attribute Information](#)
  - [Distribution Information](#)
  - [Metadata Reference Information](#)
- 

### *Identification\_Information:*

#### *Citation:*

##### *Citation\_Information:*

*Originator:* Eastern Federal Lands Highway Division

*Publication\_Date:* Published Materials

*Title:* bicy\_mrl\_03

*Geospatial\_Data\_Presentation\_Form:* vector digital data

*Online\_Linkage:* Not Available

#### *Description:*

*Abstract:* Manually Rated Roads - Lines

*Purpose:* Road Inventory Program

#### *Time\_Period\_of\_Content:*

##### *Time\_Period\_Information:*

##### *Single\_Date/Time:*

*Calendar\_Date:* 6/30/2001

*Currentness\_Reference:* ground condition

#### *Status:*

*Progress:* Complete

*Maintenance\_and\_Update\_Frequency:* As per RIP cycle

#### *Spatial\_Domain:*

##### *Bounding\_Coordinates:*

*West\_Bounding\_Coordinate:* -81.100586

*East\_Bounding\_Coordinate:* -80.949243

*North\_Bounding\_Coordinate:* 25.863585

*South\_Bounding\_Coordinate:* 25.746470

#### *Keywords:*

##### *Theme:*

*Theme\_Keyword\_Thesaurus:* BICY

*Theme\_Keyword:* BICY

*Access\_Constraints:* None

*Use\_Constraints:* Redistribution needs permission from EFLHD/NPS

#### *Point\_of\_Contact:*

##### *Contact\_Information:*

*Contact\_Person\_Primary:**Contact\_Person:* Dan VanGilder*Contact\_Organization:* EFLHD*Contact\_Position:* GIS Coordinator*Contact\_Address:**Address\_Type:* mailing and physical address*Address:* 21400 Ridgetop Circle*City:* Sterling*State\_or\_Province:* Virginia*Postal\_Code:* 20166*Country:* United States*Contact\_Voice\_Telephone:* 703-404-6361*Contact\_Electronic\_Mail\_Address:* dvangilder@fhwa.dot.gov*Native\_Data\_Set\_Environment:*

Microsoft Windows 2000 Version 5.1 (Build 2600) Service Pack 2; ESRI ArcCatalog 8.3.0.800

---

*Data\_Quality\_Information:**Attribute\_Accuracy:**Attribute\_Accuracy\_Report:* Good*Completeness\_Report:* Complete for parking areas*Lineage:**Source\_Information:**Type\_of\_Source\_Media:* GPS

---

*Spatial\_Data\_Organization\_Information:**Direct\_Spatial\_Reference\_Method:* Vector*Point\_and\_Vector\_Object\_Information:**SDTS\_Terms\_Description:**SDTS\_Point\_and\_Vector\_Object\_Type:* String*Point\_and\_Vector\_Object\_Count:* 7

---

*Spatial\_Reference\_Information:**Horizontal\_Coordinate\_System\_Definition:**Geographic:**Latitude\_Resolution:* 0.000000*Longitude\_Resolution:* 0.000000*Geographic\_Coordinate\_Units:* Decimal degrees*Geodetic\_Model:**Horizontal\_Datum\_Name:* North American Datum of 1927*Ellipsoid\_Name:* Clarke 1866*Semi-major\_Axis:* 6378206.400000*Denominator\_of\_Flattening\_Ratio:* 294.978698

*Entity\_and\_Attribute\_Information:**Detailed\_Description:**Entity\_Type:**Entity\_Type\_Label:* bicy\_mrl\_03*Entity\_Type\_Definition\_Source:* GPS*Attribute:**Attribute\_Label:* FID*Attribute\_Definition:* Internal feature number.*Attribute\_Definition\_Source:* ESRI*Attribute\_Domain\_Values:**Enumerated\_Domain:**Unrepresentable\_Domain:*

Sequential unique whole numbers that are automatically generated.

*Attribute:**Attribute\_Label:* Shape*Attribute\_Definition:* Feature geometry.*Attribute\_Definition\_Source:* ESRI*Attribute\_Domain\_Values:**Unrepresentable\_Domain:* Coordinates defining the features.*Attribute:**Attribute\_Label:* PARK\_ALPHA*Attribute\_Definition:* Park alpha code*Attribute\_Definition\_Source:* Route ID Meeting*Attribute:**Attribute\_Label:* RTE\_NO*Attribute\_Definition:* Route Number*Attribute\_Definition\_Source:* Route ID Meeting*Attribute:**Attribute\_Label:* RTE\_NAME*Attribute\_Definition:* Route Name*Attribute\_Definition\_Source:* Route ID Meeting*Attribute:**Attribute\_Label:* SECTION\_*Attribute\_Definition:* Route Section ID*Attribute\_Definition\_Source:* Route ID Meeting / ARAN Data Collection*Attribute:**Attribute\_Label:* SURF\_TYPE*Attribute\_Definition:* Surface type of route*Attribute\_Definition\_Source:* ARAN Data Collection*Attribute:**Attribute\_Label:* CONDITION*Attribute\_Definition:* Condition rating*Attribute\_Domain\_Values:**Attribute:**Attribute\_Label:* COMMENT*Attribute\_Definition:* Field comment*Attribute:**Attribute\_Label:* GPS\_DATE*Attribute\_Definition:* Date of GPS Collection*Attribute:**Attribute\_Label:* DATAFILE

*Attribute:**Attribute\_Label:* PAVE\_WIDTH*Attribute\_Definition:* Width of the paved area*Attribute:**Attribute\_Label:* PAVED\_MI*Attribute\_Definition:* Calculated paved miles

---

*Distribution\_Information:**Resource\_Description:* Downloadable Data*Standard\_Order\_Process:**Digital\_Form:**Digital\_Transfer\_Information:**Transfer\_Size:* 0.037

---

*Metadata\_Reference\_Information:**Metadata\_Date:* 20060123*Metadata\_Contact:**Contact\_Information:**Contact\_Organization\_Primary:**Contact\_Organization:* EFLHD Sterling*Contact\_Person:* Dan VanGilder*Contact\_Position:* GIS Coordinator*Contact\_Address:**Address\_Type:* mailing and physical address*Address:* 21400 Ridgetop Circle*City:* Sterling*State\_or\_Province:* Virginia*Postal\_Code:* 20166*Country:* United States*Contact\_Voice\_Telephone:* 703-404-6361*Contact\_Electronic\_Mail\_Address:* dvangilder@fhwa.dot.gov*Metadata\_Standard\_Name:* FGDC Content Standards for Digital Geospatial Metadata*Metadata\_Standard\_Version:* FGDC-STD-001-1998*Metadata\_Time\_Convention:* local time*Metadata\_Extensions:**Online\_Linkage:* <<http://www.esri.com/metadata/esriprof80.html>>*Profile\_Name:* ESRI Metadata Profile

---

Generated by [mp](#) version 2.7.33 on Mon Jan 23 13:26:16 2006

# bicy\_pkg\_03\_map

Metadata also available as

## Metadata:

- [Identification Information](#)
  - [Data Quality Information](#)
  - [Spatial Data Organization Information](#)
  - [Spatial Reference Information](#)
  - [Entity and Attribute Information](#)
  - [Distribution Information](#)
  - [Metadata Reference Information](#)
- 

### *Identification\_Information:*

#### *Citation:*

##### *Citation\_Information:*

*Originator:* Eastern Federal Lands Highway Division

*Publication\_Date:* Unknown

*Title:* bicy\_pkg\_03\_map

*Geospatial\_Data\_Presentation\_Form:* vector digital data

*Online\_Linkage:* Not Available

#### *Description:*

*Abstract:* Copy of Parking Areas

*Purpose:* Road Inventory Program

##### *Supplemental\_Information:*

This shapefile is a copy of the source parking shapefile. The features are edited as needed for graphic purposes.

#### *Time\_Period\_of\_Content:*

##### *Time\_Period\_Information:*

##### *Single\_Date/Time:*

*Calendar\_Date:* 6/30/2001

*Currentness\_Reference:* ground condition

#### *Status:*

*Progress:* Complete

*Maintenance\_and\_Update\_Frequency:* As per RIP cycle

#### *Spatial\_Domain:*

##### *Bounding\_Coordinates:*

*West\_Bounding\_Coordinate:* -81.323132

*East\_Bounding\_Coordinate:* -81.032777

*North\_Bounding\_Coordinate:* 25.901033

*South\_Bounding\_Coordinate:* 25.856891

#### *Keywords:*

##### *Theme:*

*Theme\_Keyword\_Thesaurus:* BICY

*Theme\_Keyword:* BICY

*Access\_Constraints:* None



*Use\_Constraints:* Redistribution needs permission from EFLHD/NPS

*Point\_of\_Contact:*

*Contact\_Information:*

*Contact\_Person\_Primary:*

*Contact\_Person:* Dan VanGilder

*Contact\_Organization:* EFLHD

*Contact\_Position:* GIS Coordinator

*Contact\_Address:*

*Address\_Type:* mailing and physical address

*Address:* 21400 Ridgetop Circle

*City:* Sterling

*State\_or\_Province:* Virginia

*Postal\_Code:* 20166

*Country:* United States

*Contact\_Voice\_Telephone:* 703-404-6361

*Contact\_Electronic\_Mail\_Address:* dvangilder@fhwa.dot.gov

*Native\_Data\_Set\_Environment:*

Microsoft Windows 2000 Version 5.1 (Build 2600) Service Pack 2; ESRI ArcCatalog 8.3.0.800

---

*Data\_Quality\_Information:*

*Attribute\_Accuracy:*

*Attribute\_Accuracy\_Report:* Good

*Completeness\_Report:* Complete for parking areas

*Lineage:*

*Source\_Information:*

*Type\_of\_Source\_Media:* GPS

---

*Spatial\_Data\_Organization\_Information:*

*Direct\_Spatial\_Reference\_Method:* Vector

*Point\_and\_Vector\_Object\_Information:*

*SDTS\_Terms\_Description:*

*SDTS\_Point\_and\_Vector\_Object\_Type:* G-polygon

*Point\_and\_Vector\_Object\_Count:* 7

---

*Spatial\_Reference\_Information:*

*Horizontal\_Coordinate\_System\_Definition:*

*Geographic:*

*Latitude\_Resolution:* 0.000000

*Longitude\_Resolution:* 0.000000

*Geographic\_Coordinate\_Units:* Decimal degrees

*Geodetic\_Model:*

*Horizontal\_Datum\_Name:* North American Datum of 1927

*Ellipsoid\_Name:* Clarke 1866

*Semi-major\_Axis:* 6378206.400000

*Denominator\_of\_Flattening\_Ratio:* 294.978698

---

*Entity\_and\_Attribute\_Information:*

*Detailed\_Description:*

*Entity\_Type:*

*Entity\_Type\_Label:* bicy\_pkg\_03\_map

*Attribute:*

*Attribute\_Label:* FID

*Attribute\_Definition:* Internal feature number.

*Attribute\_Definition\_Source:* ESRI

*Attribute\_Domain\_Values:*

*Unrepresentable\_Domain:*

Sequential unique whole numbers that are automatically generated.

*Attribute:*

*Attribute\_Label:* Shape

*Attribute\_Definition:* Feature geometry.

*Attribute\_Definition\_Source:* ESRI

*Attribute\_Domain\_Values:*

*Unrepresentable\_Domain:* Coordinates defining the features.

*Attribute:*

*Attribute\_Label:* PARK\_ALPHA

*Attribute\_Definition:* Park alpha code

*Attribute\_Definition\_Source:* Route ID Meeting

*Attribute:*

*Attribute\_Label:* RTE\_NO

*Attribute\_Definition:* Route number

*Attribute\_Definition\_Source:* Route ID Meeting

*Attribute:*

*Attribute\_Label:* RTE\_NAME

*Attribute\_Definition:* Route name

*Attribute\_Definition\_Source:* Route ID Meeting

*Attribute:*

*Attribute\_Label:* FEATURE

*Attribute:*

*Attribute\_Label:* SURF\_TYPE

*Attribute\_Definition:* Surface type of route

*Attribute\_Domain\_Values:*

*Attribute:*

*Attribute\_Label:* CONDITION

*Attribute\_Definition:* Condition rating for route

*Attribute:*

*Attribute\_Label:* PHOTOS

*Attribute\_Definition:* Photo filename associated with feature

*Attribute:*

*Attribute\_Label:* COMMENT

*Attribute\_Definition:* Field comment

*Attribute:*

*Attribute\_Label:* GPS\_DATE

*Attribute\_Definition:* Date of GPS collection

*Attribute:**Attribute\_Label:* DATAFILE*Attribute:**Attribute\_Label:* SQ\_FT*Attribute\_Definition:* Feature area in square feet

---

*Distribution\_Information:**Resource\_Description:* Downloadable Data*Standard\_Order\_Process:**Digital\_Form:**Digital\_Transfer\_Information:**Transfer\_Size:* 0.018

---

*Metadata\_Reference\_Information:**Metadata\_Date:* 20060123*Metadata\_Contact:**Contact\_Information:**Contact\_Organization\_Primary:**Contact\_Organization:* EFLHD Sterling*Contact\_Person:* Dan VanGilder*Contact\_Position:* GIS Coordinator*Contact\_Address:**Address\_Type:* mailing and physical address*Address:* 21400 Ridgetop Circle*City:* Sterling*State\_or\_Province:* Virginia*Postal\_Code:* 20166*Country:* United States*Contact\_Voice\_Telephone:* 703-404-6361*Contact\_Electronic\_Mail\_Address:* dvangilder@fhwa.dot.gov*Metadata\_Standard\_Name:* FGDC Content Standards for Digital Geospatial Metadata*Metadata\_Standard\_Version:* FGDC-STD-001-1998*Metadata\_Time\_Convention:* local time*Metadata\_Extensions:**Online\_Linkage:* <<http://www.esri.com/metadata/esriprof80.html>>*Profile\_Name:* ESRI Metadata Profile

---

Generated by [mp](#) version 2.7.33 on Mon Jan 23 13:27:14 2006

# bicy\_pkg\_03

Metadata also available as

## Metadata:

- [Identification Information](#)
  - [Data Quality Information](#)
  - [Spatial Data Organization Information](#)
  - [Spatial Reference Information](#)
  - [Entity and Attribute Information](#)
  - [Distribution Information](#)
  - [Metadata Reference Information](#)
- 

### *Identification\_Information:*

#### *Citation:*

##### *Citation\_Information:*

*Originator:* Eastern Federal Lands Highway Division

*Publication\_Date:* Unknown

*Title:* bicy\_pkg\_03

*Geospatial\_Data\_Presentation\_Form:* vector digital data

*Online\_Linkage:* Not Available

#### *Description:*

*Abstract:* Parking Areas

*Purpose:* Road Inventory Program

#### *Time\_Period\_of\_Content:*

##### *Time\_Period\_Information:*

##### *Single\_Date/Time:*

*Calendar\_Date:* 6/30/2001

*Currentness\_Reference:* ground condition

#### *Status:*

*Progress:* Complete

*Maintenance\_and\_Update\_Frequency:* As per RIP cycle

#### *Spatial\_Domain:*

##### *Bounding\_Coordinates:*

*West\_Bounding\_Coordinate:* -81.323132

*East\_Bounding\_Coordinate:* -81.032785

*North\_Bounding\_Coordinate:* 25.901033

*South\_Bounding\_Coordinate:* 25.856820

#### *Keywords:*

##### *Theme:*

*Theme\_Keyword\_Thesaurus:* BICY

*Theme\_Keyword:* BICY

*Access\_Constraints:* None

*Use\_Constraints:* Redistribution needs permission from EFLHD/NPS

#### *Point\_of\_Contact:*

##### *Contact\_Information:*

*Contact\_Person\_Primary:**Contact\_Person:* Dan VanGilder*Contact\_Organization:* EFLHD*Contact\_Position:* GIS Coordinator*Contact\_Address:**Address\_Type:* mailing and physical address*Address:* 21400 Ridgetop Circle*City:* Sterling*State\_or\_Province:* Virginia*Postal\_Code:* 20166*Country:* United States*Contact\_Voice\_Telephone:* 703-404-6361*Contact\_Electronic\_Mail\_Address:* dvangilder@fhwa.dot.gov*Native\_Data\_Set\_Environment:*

Microsoft Windows 2000 Version 5.1 (Build 2600) Service Pack 2; ESRI ArcCatalog 8.3.0.800

---

*Data\_Quality\_Information:**Attribute\_Accuracy:**Attribute\_Accuracy\_Report:* Good*Completeness\_Report:* Complete for parking areas*Lineage:**Source\_Information:**Type\_of\_Source\_Media:* GPS

---

*Spatial\_Data\_Organization\_Information:**Direct\_Spatial\_Reference\_Method:* Vector*Point\_and\_Vector\_Object\_Information:**SDTS\_Terms\_Description:**SDTS\_Point\_and\_Vector\_Object\_Type:* G-polygon*Point\_and\_Vector\_Object\_Count:* 7

---

*Spatial\_Reference\_Information:**Horizontal\_Coordinate\_System\_Definition:**Geographic:**Latitude\_Resolution:* 0.000000*Longitude\_Resolution:* 0.000000*Geographic\_Coordinate\_Units:* Decimal degrees*Geodetic\_Model:**Horizontal\_Datum\_Name:* North American Datum of 1927*Ellipsoid\_Name:* Clarke 1866*Semi-major\_Axis:* 6378206.400000*Denominator\_of\_Flattening\_Ratio:* 294.978698

*Entity\_and\_Attribute\_Information:**Detailed\_Description:**Entity\_Type:**Entity\_Type\_Label:* bicy\_pkg\_03*Attribute:**Attribute\_Label:* FID*Attribute\_Definition:* Internal feature number.*Attribute\_Definition\_Source:* ESRI*Attribute\_Domain\_Values:**Unrepresentable\_Domain:*

Sequential unique whole numbers that are automatically generated.

*Attribute:**Attribute\_Label:* Shape*Attribute\_Definition:* Feature geometry.*Attribute\_Definition\_Source:* ESRI*Attribute\_Domain\_Values:**Unrepresentable\_Domain:* Coordinates defining the features.*Attribute:**Attribute\_Label:* PARK\_ALPHA*Attribute\_Definition:* Park alpha code*Attribute\_Definition\_Source:* Route ID Meeting*Attribute:**Attribute\_Label:* RTE\_NO*Attribute\_Definition:* Route number*Attribute\_Definition\_Source:* Route ID Meeting*Attribute:**Attribute\_Label:* RTE\_NAME*Attribute\_Definition:* Route name*Attribute\_Definition\_Source:* Route ID Meeting*Attribute:**Attribute\_Label:* FEATURE*Attribute:**Attribute\_Label:* SURF\_TYPE*Attribute\_Definition:* Surface type of route*Attribute\_Domain\_Values:**Attribute:**Attribute\_Label:* CONDITION*Attribute\_Definition:* Condition rating for route*Attribute:**Attribute\_Label:* PHOTOS*Attribute\_Definition:* Photo filename associated with feature*Attribute:**Attribute\_Label:* COMMENT*Attribute\_Definition:* Field comment*Attribute:**Attribute\_Label:* GPS\_DATE*Attribute\_Definition:* Date of GPS collection*Attribute:**Attribute\_Label:* DATAFILE*Attribute:**Attribute\_Label:* SQ\_FT

*Attribute\_Definition:* Feature area in square feet

---

*Distribution\_Information:*

*Resource\_Description:* Downloadable Data

*Standard\_Order\_Process:*

*Digital\_Form:*

*Digital\_Transfer\_Information:*

*Transfer\_Size:* 0.018

---

*Metadata\_Reference\_Information:*

*Metadata\_Date:* 20060123

*Metadata\_Contact:*

*Contact\_Information:*

*Contact\_Organization\_Primary:*

*Contact\_Organization:* EFLHD Sterling

*Contact\_Person:* Dan VanGilder

*Contact\_Position:* GIS Coordinator

*Contact\_Address:*

*Address\_Type:* mailing and physical address

*Address:* 21400 Ridgetop Circle

*City:* Sterling

*State\_or\_Province:* Virginia

*Postal\_Code:* 20166

*Country:* United States

*Contact\_Voice\_Telephone:* 703-404-6361

*Contact\_Electronic\_Mail\_Address:* dvangilder@fhwa.dot.gov

*Metadata\_Standard\_Name:* FGDC Content Standards for Digital Geospatial Metadata

*Metadata\_Standard\_Version:* FGDC-STD-001-1998

*Metadata\_Time\_Convention:* local time

*Metadata\_Extensions:*

*Online\_Linkage:* <<http://www.esri.com/metadata/esriprof80.html>>

*Profile\_Name:* ESRI Metadata Profile

---

Generated by [mp](#) version 2.7.33 on Mon Jan 23 13:26:58 2006

# bicy\_mi

Metadata also available as

## Metadata:

- [Identification Information](#)
  - [Data Quality Information](#)
  - [Spatial Data Organization Information](#)
  - [Spatial Reference Information](#)
  - [Entity and Attribute Information](#)
  - [Distribution Information](#)
  - [Metadata Reference Information](#)
- 

### *Identification\_Information:*

#### *Citation:*

##### *Citation\_Information:*

*Originator:* The TSR Group

*Publication\_Date:* 2005

*Title:* bicy\_mi

*Geospatial\_Data\_Presentation\_Form:* vector digital data

*Online\_Linkage:* Not Available

#### *Description:*

*Abstract:* Routes

*Purpose:* Road Inventory Program

##### *Supplemental\_Information:*

Data created by The TSR Group from GPS coordinates provided in the PMS\_20 table. The shapefile is processed to aggregate adjacent segments with the same PCR rating provided in the PMS\_mile table.

#### *Time\_Period\_of\_Content:*

##### *Time\_Period\_Information:*

##### *Single\_Date/Time:*

*Calendar\_Date:* 2005

*Currentness\_Reference:* ground condition

#### *Status:*

*Progress:* Complete

*Maintenance\_and\_Update\_Frequency:* As per RIP cycle

#### *Spatial\_Domain:*

##### *Bounding\_Coordinates:*

*West\_Bounding\_Coordinate:* -81.363312

*East\_Bounding\_Coordinate:* -80.830040

*North\_Bounding\_Coordinate:* 25.910347

*South\_Bounding\_Coordinate:* 25.746359

#### *Keywords:*

##### *Theme:*

*Theme\_Keyword\_Thesaurus:* BICY

*Theme\_Keyword:* BICY



*Access\_Constraints:* None

*Use\_Constraints:* Redistribution needs permission from EFLHD/NPS

*Point\_of\_Contact:*

*Contact\_Information:*

*Contact\_Person\_Primary:*

*Contact\_Person:* Dan VanGilder

*Contact\_Organization:* EFLHD

*Contact\_Position:* GIS Coordinator

*Contact\_Address:*

*Address\_Type:* mailing and physical address

*Address:* 21400 Ridgetop Circle

*City:* Sterling

*State\_or\_Province:* Virginia

*Postal\_Code:* 20166

*Country:* United States

*Contact\_Voice\_Telephone:* 703-404-6361

*Contact\_Electronic\_Mail\_Address:* dvangilder@fhwa.dot.gov

*Native\_Data\_Set\_Environment:*

Microsoft Windows 2000 Version 5.1 (Build 2600) Service Pack 2; ESRI ArcCatalog  
8.3.0.800

---

*Data\_Quality\_Information:*

*Attribute\_Accuracy:*

*Attribute\_Accuracy\_Report:* Good

*Completeness\_Report:* Complete for routes

*Lineage:*

*Source\_Information:*

*Type\_of\_Source\_Media:* GPS

---

*Spatial\_Data\_Organization\_Information:*

*Direct\_Spatial\_Reference\_Method:* Vector

*Point\_and\_Vector\_Object\_Information:*

*SDTS\_Terms\_Description:*

*SDTS\_Point\_and\_Vector\_Object\_Type:* String

*Point\_and\_Vector\_Object\_Count:* 40

---

*Spatial\_Reference\_Information:*

*Horizontal\_Coordinate\_System\_Definition:*

*Geographic:*

*Latitude\_Resolution:* 0.000000

*Longitude\_Resolution:* 0.000000

*Geographic\_Coordinate\_Units:* Decimal degrees

*Geodetic\_Model:*

*Horizontal\_Datum\_Name:* North American Datum of 1927

*Ellipsoid\_Name:* Clarke 1866

*Semi-major\_Axis*: 6378206.400000  
*Denominator\_of\_Flattening\_Ratio*: 294.978698

---

*Entity\_and\_Attribute\_Information*:

*Detailed\_Description*:

*Entity\_Type*:

*Entity\_Type\_Label*: bicy\_mi

*Attribute*:

*Attribute\_Label*: FID

*Attribute\_Definition*: Internal feature number.

*Attribute\_Definition\_Source*: ESRI

*Attribute\_Domain\_Values*:

*Unrepresentable\_Domain*:

Sequential unique whole numbers that are automatically generated.

*Attribute*:

*Attribute\_Label*: Shape

*Attribute\_Definition*: Feature geometry.

*Attribute\_Definition\_Source*: ESRI

*Attribute\_Domain\_Values*:

*Unrepresentable\_Domain*: Coordinates defining the features.

*Attribute*:

*Attribute\_Label*: FNODE\_

*Attribute\_Definition*: Length of feature

*Attribute\_Definition\_Source*: ESRI

*Attribute*:

*Attribute\_Label*: TNODE\_

*Attribute*:

*Attribute\_Label*: LPOLY\_

*Attribute\_Definition*: Route number

*Attribute\_Definition\_Source*: Route ID Meeting

*Attribute*:

*Attribute\_Label*: RPOLY\_

*Attribute\_Definition*: Collected route length

*Attribute\_Definition\_Source*: ARAN Data Collection

*Attribute*:

*Attribute\_Label*: LENGTH

*Attribute\_Definition*: Numeric PCR definition

*Attribute\_Domain\_Values*:

*Range\_Domain*:

*Range\_Domain\_Minimum*: 0

*Range\_Domain\_Maximum*: 100

*Attribute*:

*Attribute\_Label*: BICY\_MI\_

*Attribute\_Definition*: Verbal PCR definition

*Attribute\_Domain\_Values*:

*Enumerated\_Domain*:

*Enumerated\_Domain\_Value*: POOR

*Enumerated\_Domain\_Value\_Definition*: PCR value <= 60

*Enumerated\_Domain*:

*Enumerated\_Domain\_Value:* FAIR

*Enumerated\_Domain\_Value\_Definition:* PCR value 61-84

*Enumerated\_Domain:*

*Enumerated\_Domain\_Value:* GOOD

*Enumerated\_Domain\_Value\_Definition:* PCR value 85-94

*Enumerated\_Domain:*

*Enumerated\_Domain\_Value:* EXCELLENT

*Enumerated\_Domain\_Value\_Definition:* PCR value 95-100

*Attribute:*

*Attribute\_Label:* BICY\_MI\_ID

*Attribute\_Definition:* Indicates whether feature has been edited for graphic purposes.

*Attribute\_Domain\_Values:*

*Enumerated\_Domain:*

*Enumerated\_Domain\_Value:* 1

*Enumerated\_Domain\_Value\_Definition:* Edit has been made to feature for graphic purposes

*Enumerated\_Domain:*

*Enumerated\_Domain\_Value:* 0

*Enumerated\_Domain\_Value\_Definition:* No edit made to feature.

*Attribute:*

*Attribute\_Label:* ID

*Attribute:*

*Attribute\_Label:* RTE\_NO

*Attribute:*

*Attribute\_Label:* BMP

*Attribute:*

*Attribute\_Label:* EMP

*Attribute:*

*Attribute\_Label:* PCR

*Attribute:*

*Attribute\_Label:* PCR\_RATE

*Attribute:*

*Attribute\_Label:* RT\_LENGTH

*Attribute:*

*Attribute\_Label:* PCRMI

*Attribute:*

*Attribute\_Label:* PCR\_RATEMI

*Attribute:*

*Attribute\_Label:* PCR\_RATEAV

*Attribute:*

*Attribute\_Label:* PCRAV

*Attribute:*

*Attribute\_Label:* TSR\_EDIT

*Distribution\_Information:*

*Resource\_Description:* Downloadable Data

*Standard\_Order\_Process:*

*Digital\_Form:*

*Digital\_Transfer\_Information:*

*Transfer\_Size: 0.016*

---

*Metadata\_Reference\_Information:*

*Metadata\_Date: 20060123*

*Metadata\_Contact:*

*Contact\_Information:*

*Contact\_Organization\_Primary:*

*Contact\_Organization: EFLHD Sterling*

*Contact\_Person: Dan VanGilder*

*Contact\_Position: GIS Coordinator*

*Contact\_Address:*

*Address\_Type: mailing and physical address*

*City: Sterling*

*State\_or\_Province: Virginia*

*Postal\_Code: 20166*

*Country: United States*

*Contact\_Voice\_Telephone: 703-404-6361*

*Contact\_Electronic\_Mail\_Address: dvangilder@fhwa.dot.gov*

*Metadata\_Standard\_Name: FGDC Content Standards for Digital Geospatial Metadata*

*Metadata\_Standard\_Version: FGDC-STD-001-1998*

*Metadata\_Time\_Convention: local time*

*Metadata\_Extensions:*

*Online\_Linkage: <<http://www.esri.com/metadata/esriprof80.html>>*

*Profile\_Name: ESRI Metadata Profile*

---

Generated by [mp](#) version 2.7.33 on Mon Jan 23 13:27:34 2006