



# The Road Inventory of Obed Wild and Scenic River OBRI - 5640



**national park service**

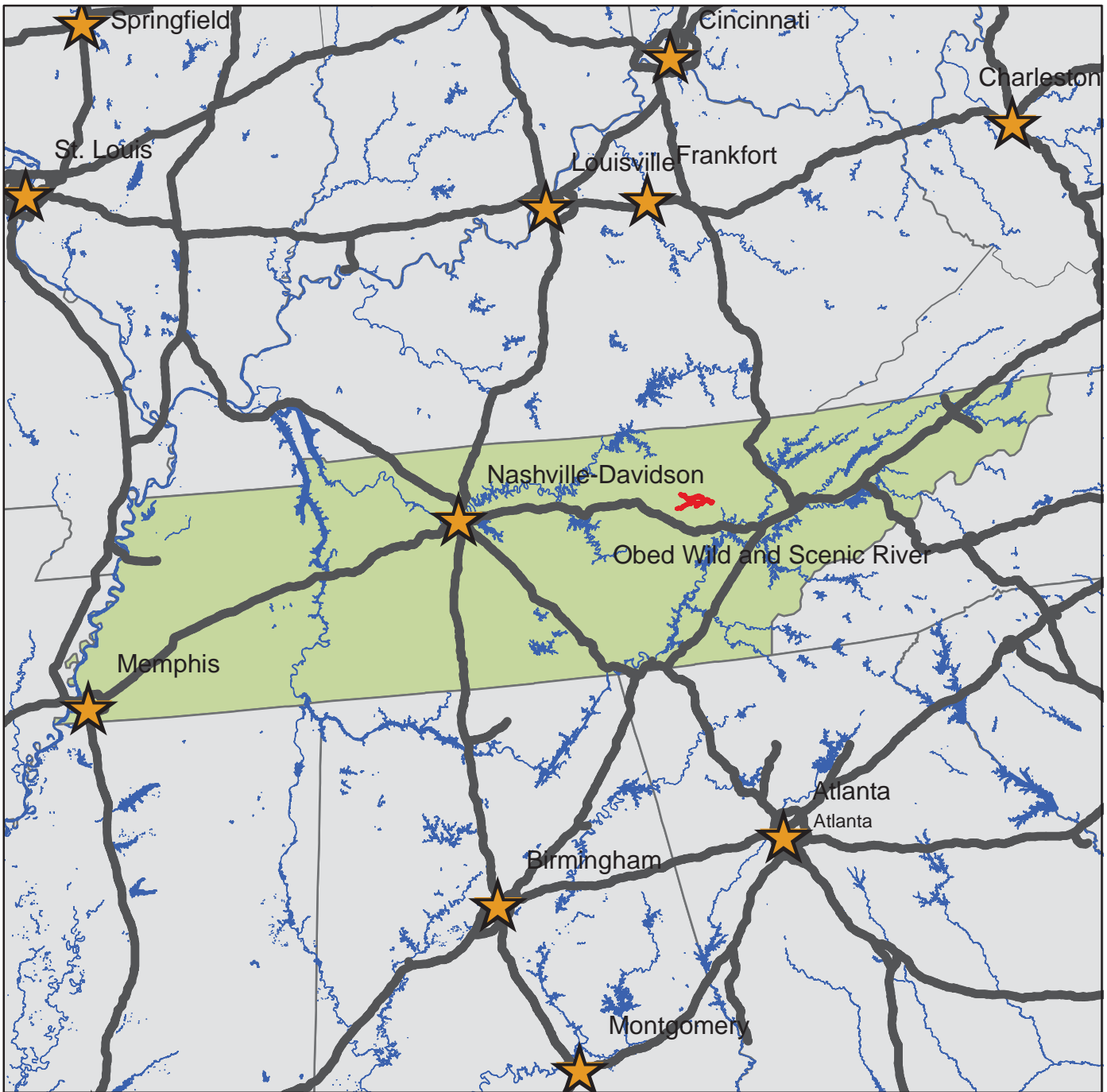


## Road Inventory Program

Prepared By:  
Federal Highway Administration  
Eastern Federal Lands Highway Division  
Cycle 3



# Obed Wild and Scenic River in Tennessee





## TABLE OF CONTENTS

<b><u>SECTION</u></b>	<b><u>PAGE</u></b>
<b>1. INTRODUCTION</b>	<b>1 - 1</b>
<b>2. PARK SUMMARY INFORMATION</b>	
National Park Summaries	<b>2 - 1</b>
Cost to Improve Based on Historical and Estimated Data	<b>2 - 2</b>
Paved Route Miles and Percentages by Functional Class and PCR	<b>2 - 3</b>
<b>3. PARK SUMMARY MAPS</b>	
Route Location Key Map	<b>3 - 1</b>
Route Condition Key Map – PCR Mile by Mile	<b>3 - 4</b>
<b>4. PARK ROUTE INVENTORY</b>	
Route Identification Lists (Numeric and Alphabetic)	<b>4 - 1</b>
<b>5. PAVED ROUTE CONDITION RATING SHEETS</b>	<b>5 - 1</b>
<b>6. MANUALLY RATED PAVED ROUTE CONDITION RATING SHEETS</b>	<b>6 - 1</b>
<b>7. PARKING LOT CONDITION RATING SHEETS</b>	<b>7 - 1</b>
Paved parking Areas	
<b>8. PARKWIDE / ROUTE MAINTENANCE FEATURES SUMMARY</b>	<b>8 - 1</b>
<b>9. PARK ROUTE MAINTENANCE FEATURES ROAD LOG</b>	<b>9 - 1</b>
<b>10. APPENDIX</b>	
A. Glossary of Terms and Abbreviations	<b>10 - 1</b>
B. Description of Rating System	<b>10 - 3</b>
C. Digital Image Information	<b>10 - 7</b>
D. Metadata	<b>10 - 8</b>

## INTRODUCTION

**Background:** In July 1976, the National Park Service (NPS) and the Federal Highway Administration (FHWA) entered into a Memorandum of Agreement (MOA), establishing the Road Inventory Program (RIP). In 1980, the NPS and the FHWA terminated the 1976 MOA and entered into a new MOA that provided for the completion of the initial phase of the RIP. The purpose of the RIP, per the 1980 MOA, was to maintain and update RIP data in order to develop long-range and short-range costs and programs to bring National Park Service (NPS) roads up to, or to maintain, designated standards, and to establish a maintenance management program.

The FHWA's Federal Lands Highway (FLH) was assigned the task of identifying condition deficiencies and corrective priorities along with associated corrective costs, inventorying maintenance features (e.g., culverts, signs, guardrail, etc.), summarizing the data and findings in a report, and providing a photographic record of the road system.

The FLH completed the initial phase of the RIP in the early 1980's. As a result of this effort, each park received a RIP book, also known as the "Brown Book," that included the information collected during this initial RIP phase.

In an effort to maintain and update the RIP data, a cyclical data collection and reporting process was re-established in the 1990's. The FLH completed two cycles of RIP data collection between 1994 and 2001. Cycle 1 data was collected in 44 large parks from 1994 to 1995. This data was found to be unusable for comparison to future cycles. Cycle 2 data was collected from March 1997 to January 2001 in 79 large parks and 5 small parks containing 4,874 route miles. Each park received a copy of a Cycle 2 RIP Report, also known as the "Blue Book."

Since 1984, the RIP Program has been funded through the Federal Lands Highway Program's Park Roads and Parkways (PRP) Program. Currently, the NPS Washington Headquarters' Park Facility Management Division is responsible for coordinating the RIP program with the FLH. The FLH Washington office coordinates policy and prepares national reports and needs assessment studies for Congress.

In 1998, the Transportation Equity Act for the 21<sup>st</sup> Century (TEA-21) amended Title 23 U.S.C., and inserted Section 204(a)(6) which requires the Federal Highway Administration and the National Park Service, to develop, by rule, a Pavement Management System (PMS) for the park roads and parkways serving the National Park System. As a result of the requirements in TEA-21, the NPS and the FHWA are in the process of developing a PMS. The PMS will assist the decision-makers in effectively spending limited PRP Program funds. The PMS will provide information for planning and programming road maintenance, rehabilitation, and reconstruction activities. RIP data will provide the basic information for this system.

Key information included in the RIP is the mileage inventory and condition assessments accomplished by the RIP Program. The mileage and condition data are used in the current allocation formula of PRP Program funds.

**RIP Cycle 3:** A third RIP cycle was initiated in 2001. Data was collected from March 2001 to July 2004, and is included in the Cycle 3 Reports. Cycle 3 includes 254 large and small parks with a combined total of 5,455 route miles.

In the Cycle 3 Reports, a general condition rating of excellent, good, fair and poor is ascribed to each one-mile section of paved roadway, and to each paved parking area. This condition rating system provides a realistic means of assessing the general funding needs for road improvements. Along with these descriptive condition ratings, a numerical rating between 0 and 100 is ascribed to each mile of road and to each parking area.. This numerical rating is called a Pavement Condition Rating (PCR). The PCR rating system is described in Section 10 of this report.

All of the fieldwork required for obtaining inventory, condition, and maintenance feature information is coordinated with each park and the regional offices to ensure that the information in the RIP reports is accurate.

The FLH is responsible for all of the data presented in this report. Anyone having questions or comments regarding the contents of this report is encouraged to contact the FHWA RIP Coordinator. It is our aim to provide exceptional customer satisfaction in our delivery of the RIP program.

FHWA RIP Coordinator:

James A. Amenta  
FHWA/EFLHD  
Technical Services, HTS-15  
21400 Ridgetop Circle  
Sterling, VA 20166  
(703) 404-6366

## Obed Wild and Scenic River Summaries

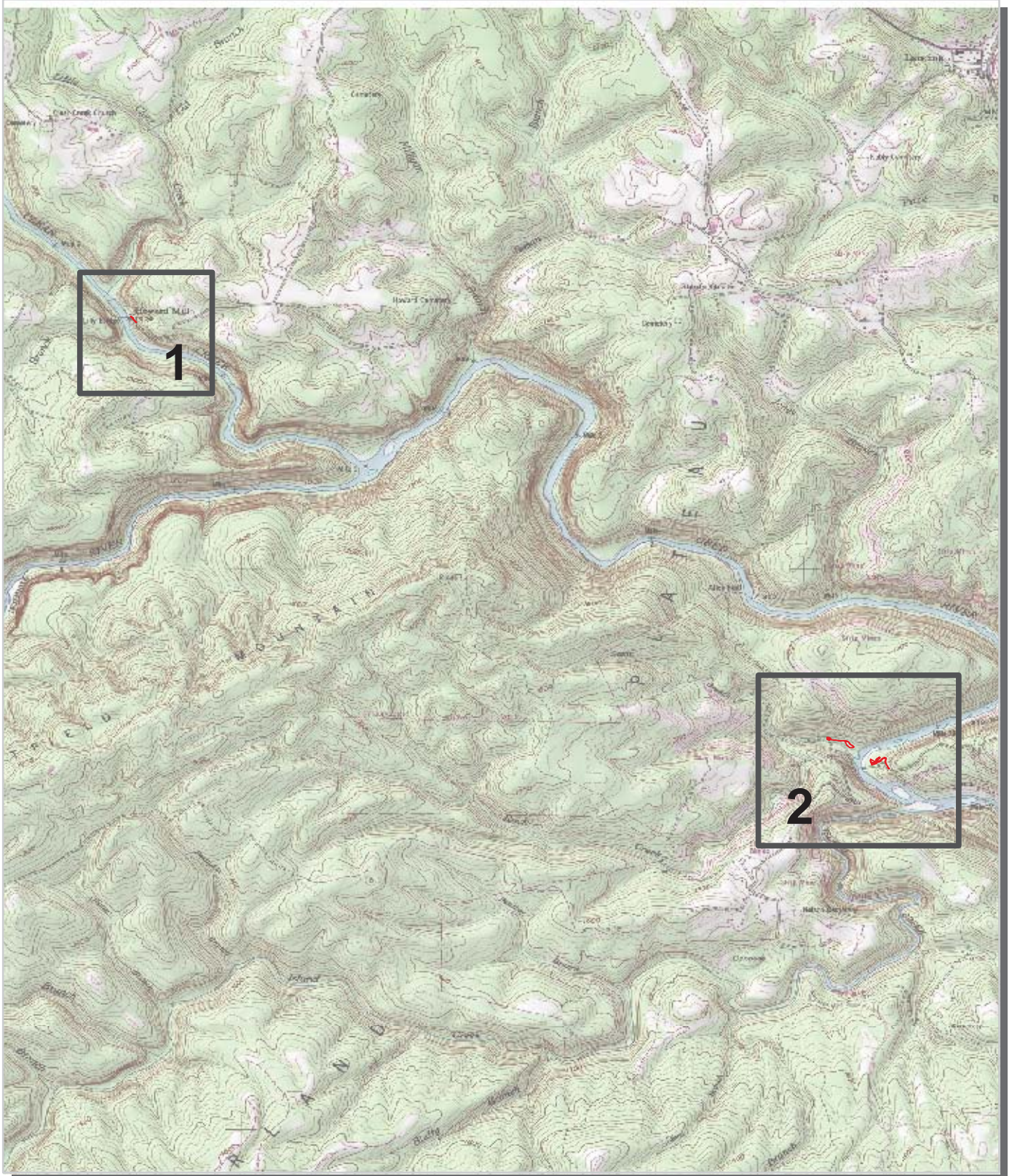
### Overall Park Mileage Summary

<b>PARK TOTAL SUMMARY ITEMS</b>	<b>TOTAL</b>	<b>DATE</b>
Paved ARAN Driven Route Miles	0.00	
Unpaved Estimated Route Miles	1.13	11/19/2002
Paved ARAN and Unpaved Route Miles	1.13	
Paved ARAN Driven Lane Miles	0.00	11/19/2002
Paved MRR Lane Miles	0.00	
Parking Lot Lane Miles	0.94	11/19/2002
Total Paved Lane Miles	0.94	

Notes: Total Paved Lane Miles includes the sum of Paved ARAN Driven Lane Miles, Paved MRR Lane Miles, and Parking Lot Lane Miles

Unpaved Route Miles are estimates, they have not been inventoried by the Roadway Inventory Program (RIP)

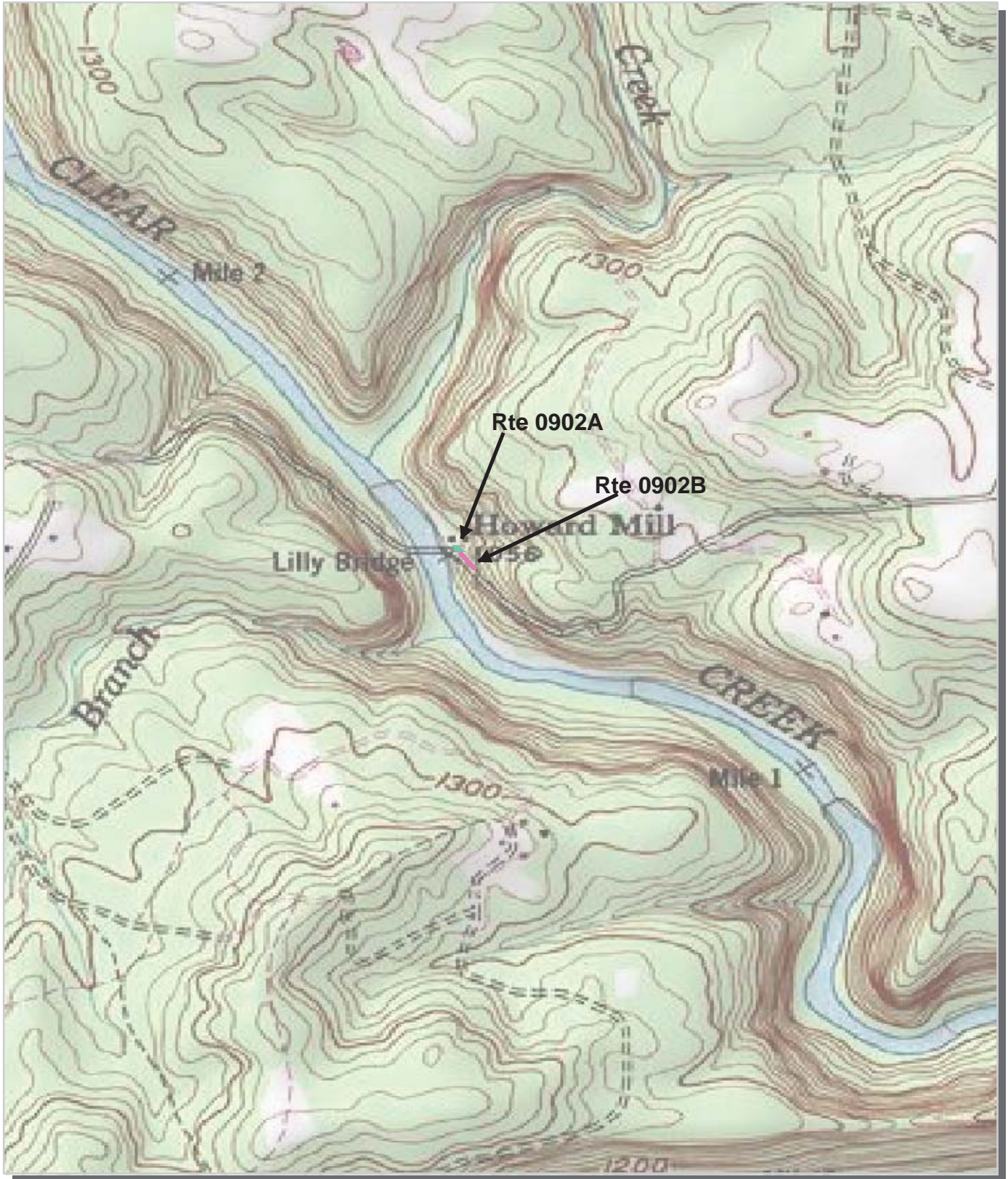
# Obed Wild and Scenic River Route Location Key Map



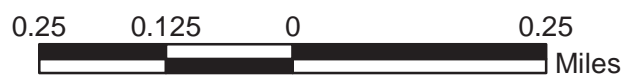
 Park Owned Routes



# Obed Wild and Scenic River Route Location Map Area Map 1

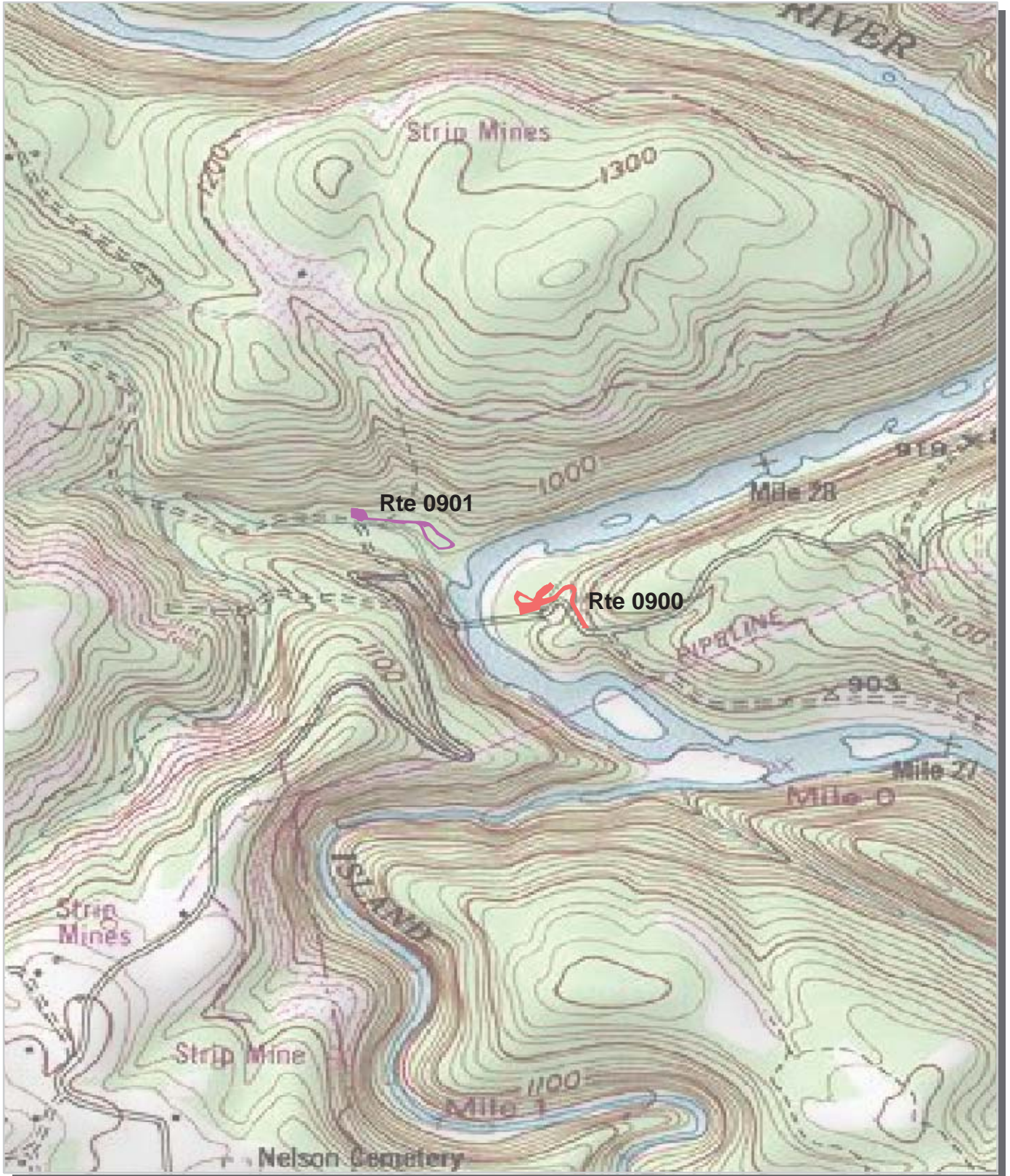


Unique colors used to differentiate routes





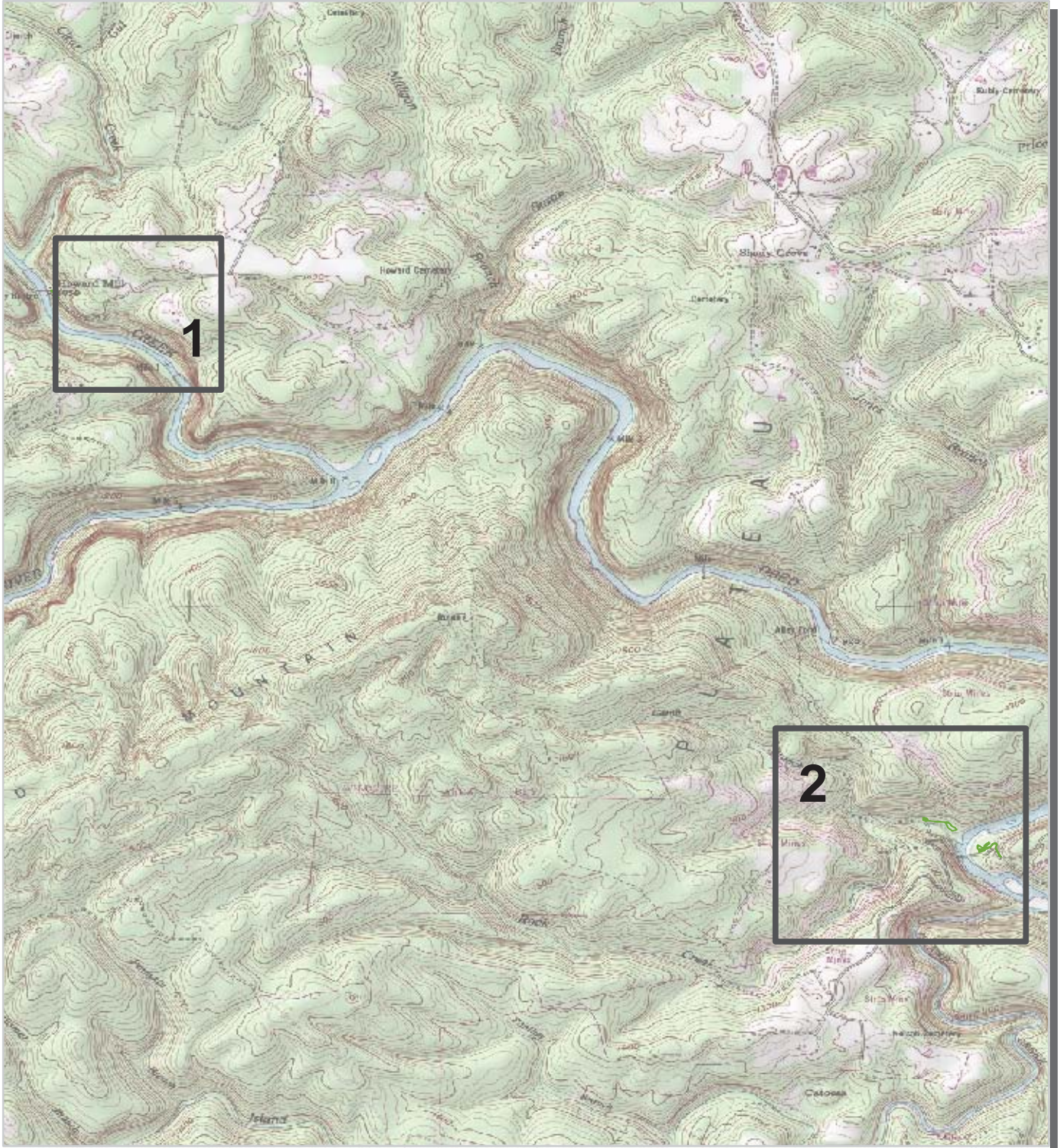
# Obed Wild and Scenic River Route Location Map Area Map 2



Unique colors used to differentiate routes



# Obed Wild and Scenic River Route Condition Key Map PCR - Mile by Mile

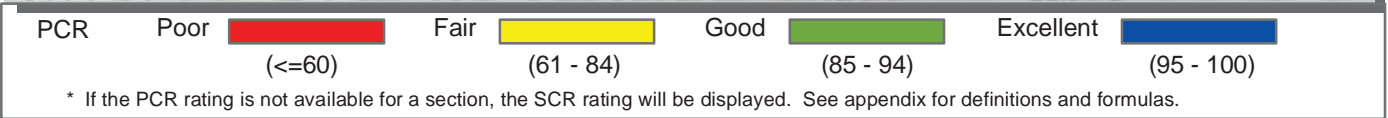
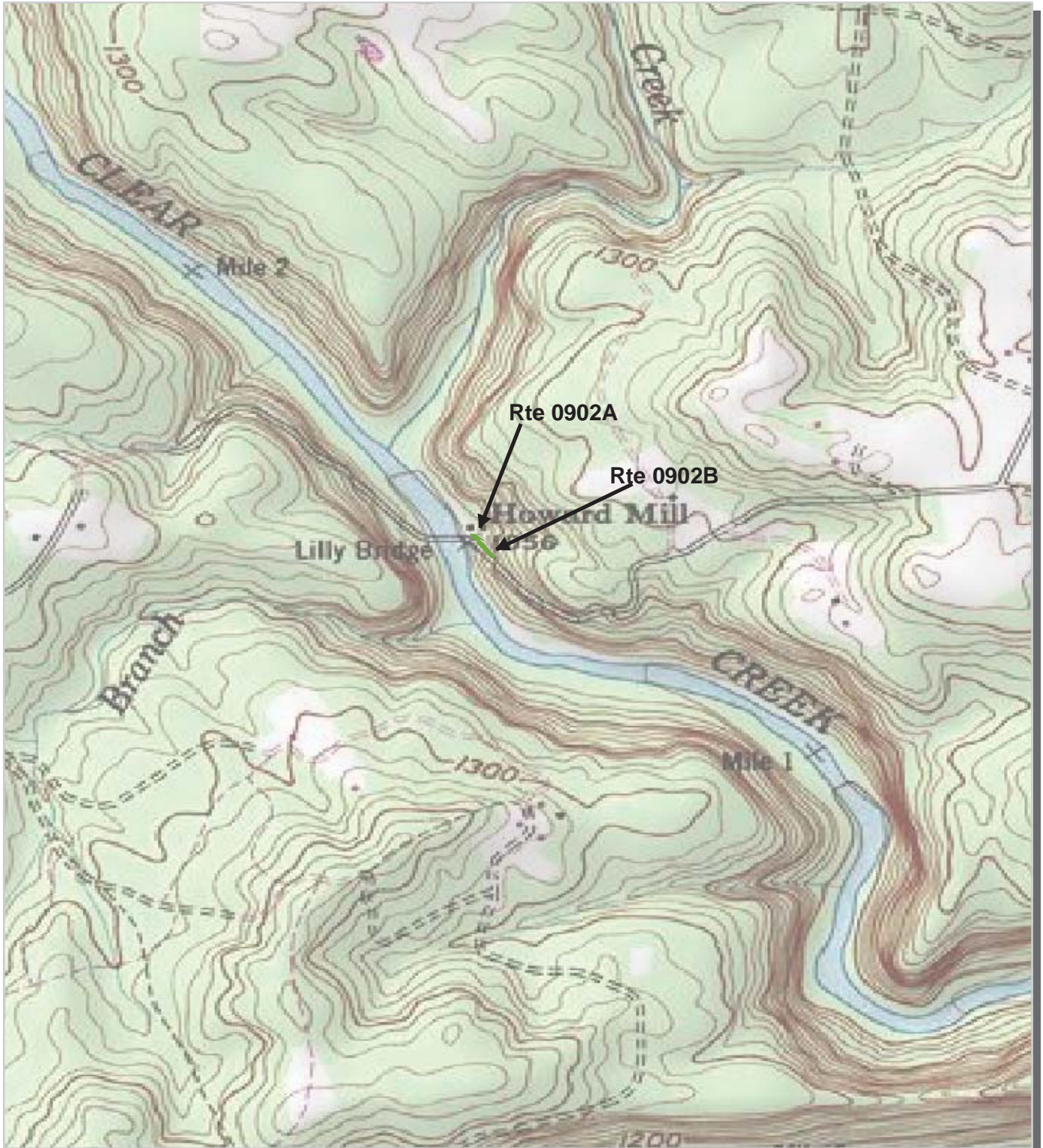


PCR	Poor	<span style="display: inline-block; width: 20px; height: 10px; background-color: red; border: 1px solid black;"></span>	Fair	<span style="display: inline-block; width: 20px; height: 10px; background-color: yellow; border: 1px solid black;"></span>	Good	<span style="display: inline-block; width: 20px; height: 10px; background-color: green; border: 1px solid black;"></span>	Excellent	<span style="display: inline-block; width: 20px; height: 10px; background-color: blue; border: 1px solid black;"></span>
		(<=60)		(61 - 84)		(85 - 94)		(95 - 100)

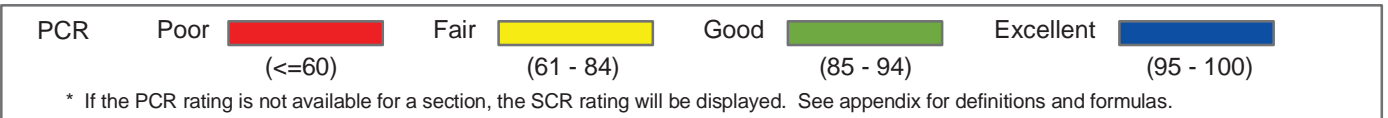
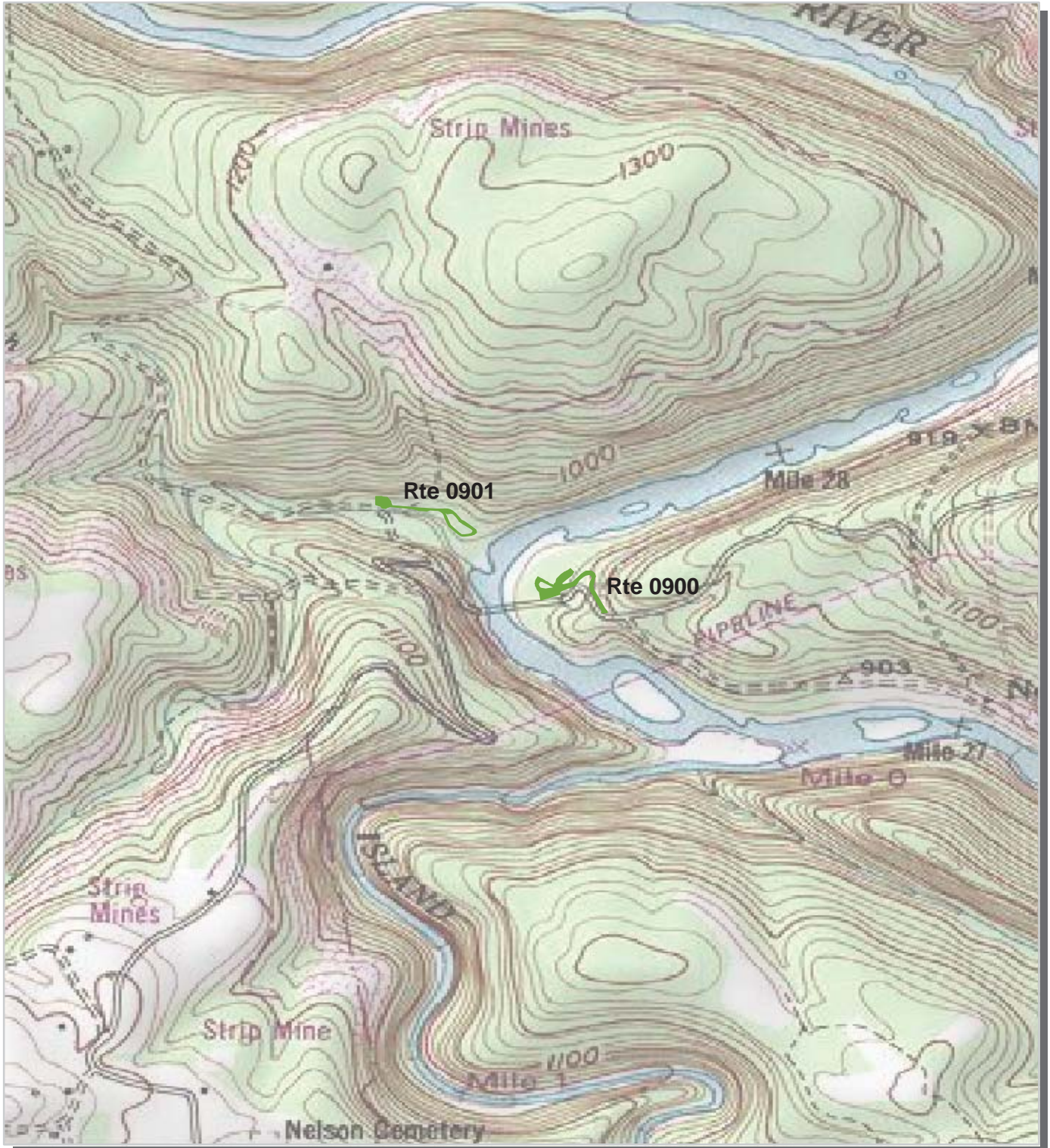
\* If the PCR rating is not available for a section, the SCR rating will be displayed. See appendix for definitions and formulas.



# Obed Wild and Scenic River Route Condition Area Map 1 PCR - Mile by Mile



# Obed Wild and Scenic River Route Condition Area Map 2 PCR - Mile by Mile



# NPS/RIP Route ID Report

(Numerical By Route #)

Shading Color Key:

Red text denotes  
approx. mileage

White = Paved Routes, ARAN Driven

Yellow = Unpaved Routes, ARAN not Driven

Blue = All Paved Parking Areas

Grey = Paved Routes, ARAN not Driven

Red =

Green = All Unpaved Parking Areas

Black = Paved State, Local or Private non-NPS Routes, ARAN Driven

Purple =

## OBRI

### Obed Wild and Scenic River

Rte. #	FMSS Asset #	Route Name	Route Description		Paved Miles	Un-Paved Miles	Rte. Lgth	Func. Class	Rte. Lanes	Manual Rated SQ/FT	Surf. Type
			From	To							
0100	68635	ROCK CREEK CAMPGROUND ROAD	From Catoosa Road	To Route 0901	0.00	0.13	0.13	2	1	0	GR
0101	68997	LILLY BLUFF OVERLOOK ROAD	From Ridge Road	To Route 0904	0.00	0.25	0.25	2	1	0	GR
0102	69012	JETT ACCESS ROAD	From State Highway 298	To Route 0906	0.00	0.25	0.25	2	1	0	GR
0400	69091	OBED JUNCTION ROAD	From Ridge Road	To End	0.00	0.50	0.50	6	1	0	OT
0900	68585	NEMO PICNIC AREA PARKING	From Catoosa Road	To Parking	0.00	0.00	0.00	9		31,423	AS
0901	68643	ROCK CREEK CAMPGROUND PARKING	From Route 0100	To Parking	0.00	0.00	0.00	9		18,407	AS
0902A	68972	LILLY BRIDGE PARKING AREA A	From Ridge Road	To Parking	0.00	0.00	0.00	9		1,411	AS
0902B	68972	LILLY BRIDGE PARKING AREA B	From Ridge Road	To Parking	0.00	0.00	0.00	9		3,436	AS
0903		LILLY BRIDGE TRAIL PARKING	From Ridge Road	To Parking	0.00	0.00	0.00	9		7,500	GR
0904		LILLY BLUFF OVERLOOK PARKING	From Route 0101	To Parking	0.00	0.00	0.00	9		5,000	GR
0905	69003	LILLY BLUFF CAMPGROUND PARKING	From Route 0101	To Parking	0.00	0.00	0.00	9		5,000	GR
0906	69017	JETT BRIDGE PARKING	From Route 0102	To Parking	0.00	0.00	0.00	9		7,500	GR
0907		BARNETT BRIDGE PARKING	From Barnett Bridge Road	To Parking	0.00	0.00	0.00	9		7,500	GR
				<b>Totals:</b>	0.00	1.13	1.13			87,178	

# NPS/RIP Route ID Report

(Numerical By Route #)

Shading Color Key:

Red text denotes approx. mileage

White = Paved Routes, ARAN Driven	Yellow = Unpaved Routes, ARAN not Driven	Blue = All Paved Parking Areas
Grey = Paved Routes, ARAN not Driven	Red =	Green = All Unpaved Parking Areas
Black = Paved State, Local or Private non-NPS Routes, ARAN Driven	Purple =	

### General Park Road Functional Classification Table

- Class 1 Principal Park Road/Rural Parkway (Public Roads) - Roads which constitute the main access route, circulatory tour, or thoroughfare for park visitors. Route Numbers 1 - 99. Note: Rural parkways (e.g. Natchez Trace) are numbered 1 - 9. State Routes Inventoried for Park. Route Numbers 5000-5999
- Class 2 Connector Park Road (Public Roads) - Roads which provide access within a park to areas of scenic, scientific, recreational or cultural interest, such as overlooks, campgrounds, etc. Route Numbers 100-199.
- Class 3 Special Purpose Park Road (Public Roads) - Roads which provide circulation within public areas, such as campgrounds, picnic areas, visitor center complexes, concessionaire facilities, etc. These roads generally serve low-speed traffic and are often designed for one-way circulation. Route Numbers 200-299.
- Class 4 Primitive Park Roads (Public Roads) - Roads which provide circulation through remote areas and/or access to primitive campgrounds and undeveloped areas. These roads frequently have no minimum design standards and their use may be limited to specially equipped vehicles. Route Numbers 200-299.  
Note: Functional Classes 3 and 4 have the same route numbers because, historically, they were numbered similarly.
- Class 5 Administrative Access Road (Administrative Roads) - All public roads intended for access to administrative developments or structures such as park offices, employee quarters, or utility areas. Route Numbers 400-499.
- Class 6 Restricted Road (Administrative Roads) - All roads normally closed to the public, including patrol roads, truck trails, and other similar roads. Route Numbers 400-499.  
Note: Functional Classes 5 and 6 have the same route numbers because historically they were numbered similarly and often there is little distinction between these routes. For example, because utility areas and employee housing are often closed to the public, this restriction would result in classification of FC 6 rather than FC 5.
- Class 7 Urban Parkway (Urban Parkways and City Streets) - These facilities serve high volumes of park and non-park related traffic and are restricted, limited-access facilities in an urban area. This category of roads primarily encompasses the major parkways which serve as gateways to our nation's capital. Other major park roads or portions thereof, however, may be included in this category. Route Numbers 1-9.
- Class 8 City Streets (Urban Parkways and City Streets) - City streets are usually extensions of the adjoining street system that are owned and maintained by the National Park Service. The construction and/or reconstruction should conform with accepted local engineering practice and local conditions. Route Numbers 600-699.
- Class 9 Boat Ramp - (Public and Administrative) Route Numbers 800-899.  
Parking Area - (Public and Administrative) Route Numbers 900-1999.

### Surface Type Abbreviations:

- AS - Asphaltic Concrete Pavement
- CO - Portland Cement Concrete Pavement
- NC - New Chip Seal Pavement (Under 5 Years)
- OC - Old Chip Seal Pavement (5 Years and Greater)
- SS - Slurry Seal Pavement
- GR - Gravel Road Bed
- BR - Brick or Pavers Road Bed
- CB - Cobble Stone Road Bed
- SA - Sand Road Bed
- DT - Dirt or Native Material Road Bed
- OT - Other Materials Road Bed

\*\*\*\*\*  
A park road system contains those roads within or giving access to a park or other unit of the NPS which are administered by the NPS, or by the Service in cooperation with other agencies. The assignment of a functional classification (FC) to a park road is not based on traffic volumes or design speed, but on the intended use or function of that road or route.

The historic route numbering system also included a 300 number series for interpretive roads, and a 500 series for one-way roads. There are approximately 250 roads nationwide which are designated by the 300 and 500 series. The numbers for these roads will be maintained for reporting consistency. However, since these interpretive and one-way routes are not as clearly tied to a specific functional class, the 300 and 500 series will be discontinued for future use.

ZZ Functional Class Routes were added from FMSS Database. Final Route Number and Functional Class will be established during Park visit for Cycle 4 data collection.

## **Paved Route Condition Rating Sheets**

No roads were driven with the ARAN vehicle in Cycle 3

## **OBRI: Manually Rated Paved Route Condition Rating Sheets**

No data available for this section



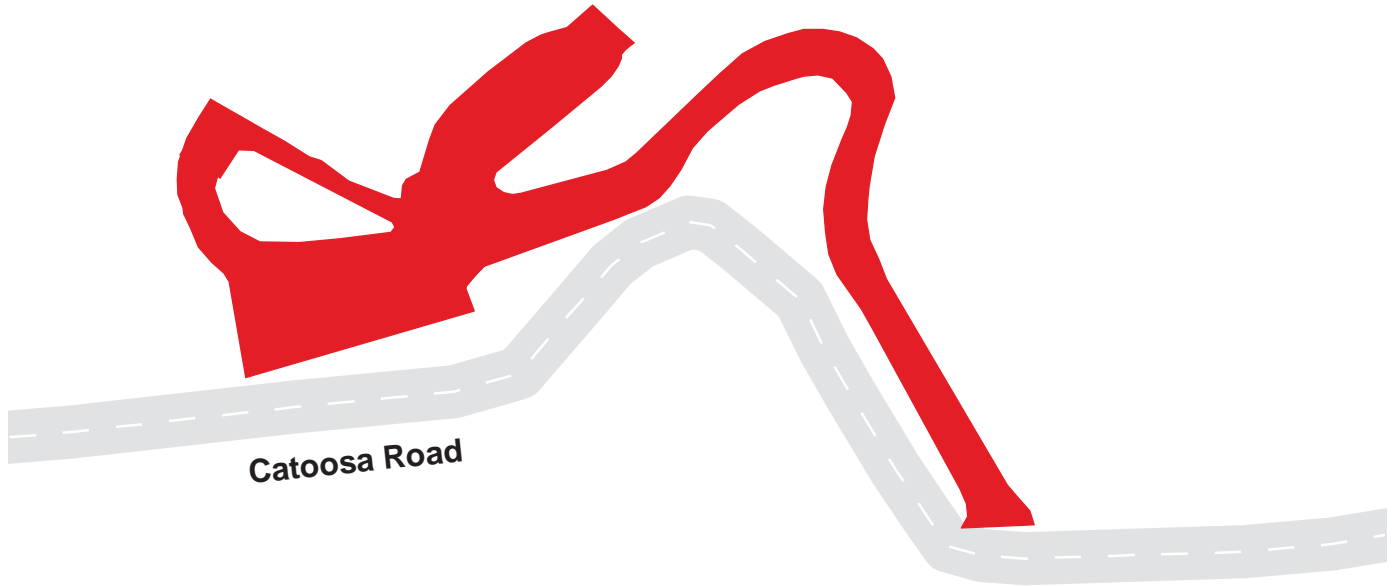
# Obed Wild and Scenic River

## Route 0900

Nemo Picnic Area Parking  
From Catoosa Road

Route	Public / NonPublic	Date Visited	Area (sq ft)	Lane Miles *	Surface Type	Condition / PCR
0900	Public	11/19/2002	31423	0.54	AS	GOOD / 90

\* Lane miles are based on 11' lane widths

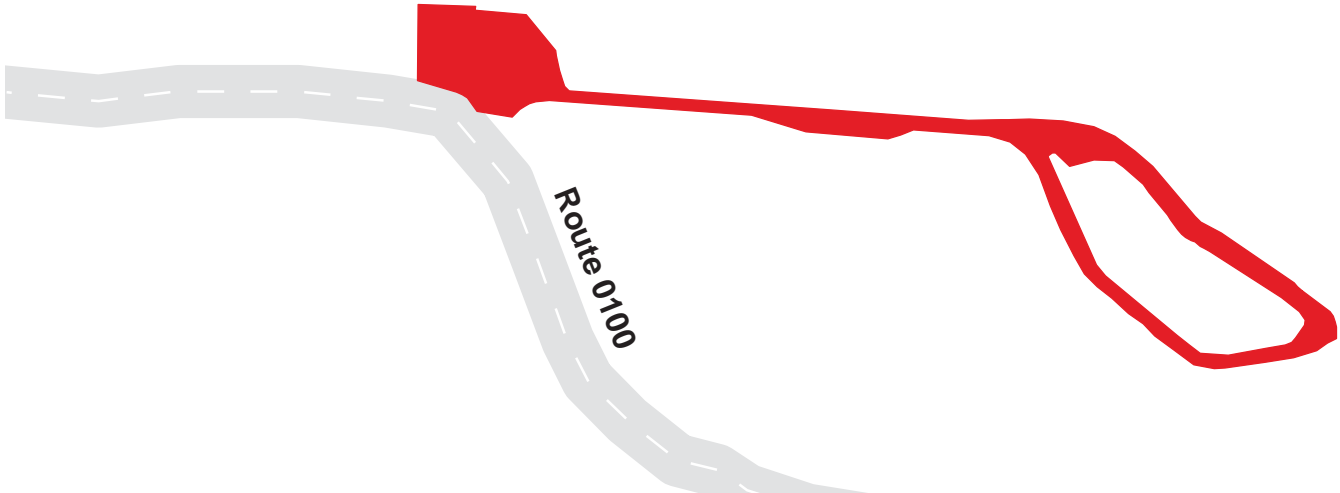


# Obed Wild and Scenic River Route 0901

Rock Creek Campground Parking  
From Route 0100

Route	Public / NonPublic	Date Visited	Area (sq ft)	Lane Miles *	Surface Type	Condition / PCR
0901	Public	11/19/2002	18407	0.32	AS	GOOD / 90

\* Lane miles are based on 11' lane widths



# Obed Wild and Scenic River

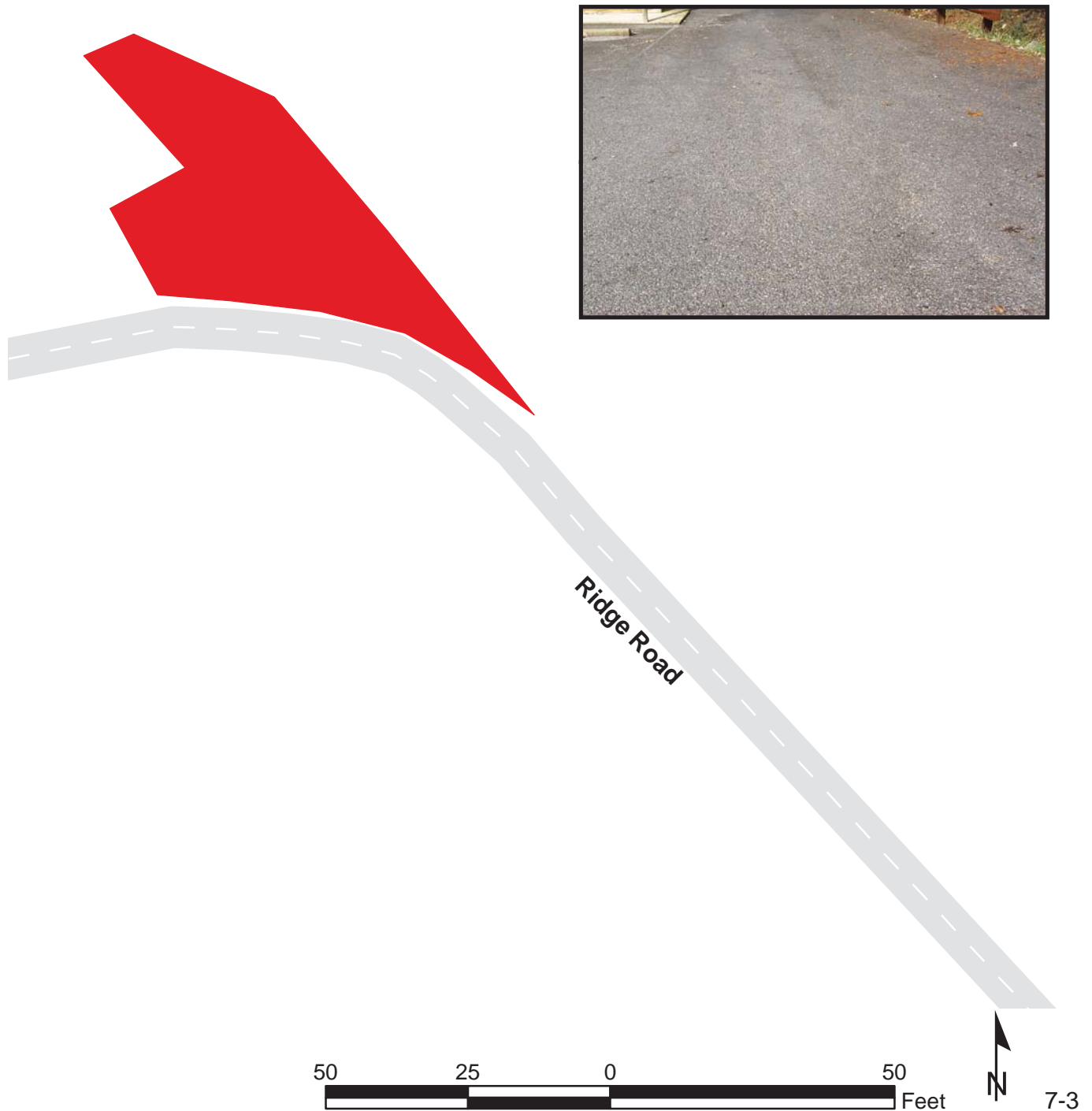
## Route 0902A

Lilly Bridge Parking Area A

From Ridge Road

Route	Public / NonPublic	Date Visited	Area (sq ft)	Lane Miles *	Surface Type	Condition / PCR
0902A	Public	11/19/2002	1411	0.02	AS	GOOD / 90

\* Lane miles are based on 11' lane widths



# Obed Wild and Scenic River

## Route 0902B

Lilly Bridge Parking Area B  
From Ridge Road

Route	Public / NonPublic	Date Visited	Area (sq ft)	Lane Miles *	Surface Type	Condition / PCR
0902B	Public	11/19/2002	3436	0.06	AS	GOOD / 90

\* Lane miles are based on 11' lane widths



## **Parkwide / Route Maintenance Features Summary**

No roads were driven with the ARAN vehicle in Cycle 3, therefore no maintenance features were collected

## **Park Route Maintenance Features Road Log**

No roads were driven with the ARAN vehicle in Cycle 3, therefore no maintenance features were collected

## APPENDIX A: GLOSSARY OF TERMS AND ABBREVIATIONS

TERM OR ABBREVIATION	DESCRIPTION OR DEFINITION
5640	Numeric Code for Obed Wild and Scenic River
AADT	Annually Adjusted Daily Traffic. Average daily traffic adjusted for the term period comprising 80% of annual visitation
CRS	Condition Rating Sheets. (Section 5)
Drainage Condition Rating	A visual rating (Good, Poor) of the drainage condition. (see Section 10)
Excellent	Excellent rating with an index value of 95 or greater
Fair	Fair rating with an index value between 61 and 84
Func. Class	Functional Classification (see Route ID, Section 4)
Good	Good rating with an index value between 85 and 94
IRI	International Roughness Index
Lane Width	Distance from road centerline to fogline, or from centerline to edge-of-pavement when no fogline exists
MRR	Manually Rated Route
NA	Not Applicable
NC	Not Collected
OBRI	Alpha Code for Obed Wild and Scenic River
Paved Width	Distance from edge-of-pavement to edge-of-pavement
PCR	Pavement Condition Rating (see Section 10)

Poor	Poor Rating with an index value of 60 or less
RCI	Roughness Condition Index
SADT	Seasonal Annual Daily Traffic. Average daily traffic for the total defined "season"
SCR	Surface Condition Rating (see Section 10)
Shoulder Condition Rating	Visual rating (Good, Poor) of the condition of shoulder. (see Section 10)
Shoulder Width	Distance from fogline to hinge point, or if no fogline, from edge-of-pavement to hinge point



## APPENDIX B: DESCRIPTION OF RATING SYSTEM

A numerical roadway rating system is used to describe the overall condition of the paved roadways and paved parking areas. In this system, a numerical rating between 1 and 100 is ascribed to each 0.02 miles of road. This numerical rating is called a Pavement Condition Rating (PCR). A “perfect” road, newly constructed with no surface distresses and a smooth surface, would be assigned a PCR rating of 100. Based on the type, severity, and extent of surface distresses points are deducted from 100 to arrive at the final PCR.

Data is collected on the following distresses and conditions:

- **Alligator Cracking** - a series of interconnecting cracks resembling alligator skin or chicken wire, which can occur anywhere in the lane.
- **Longitudinal Cracking** - cracks which are parallel to the pavement centerline or asphalt lay-down direction.
- **Transverse Cracking** - cracks perpendicular to the pavement centerline.
- **Pothole (patch)** - a bowl-shaped hole in the pavement surface. May be patched or not.
- **Rutting** - surface depressions in the wheel paths.

**Roughness** is collected as International Roughness Index (IRI) and is used in the PCR formula. Roughness is measured in inches of vertical displacement of the vehicle per mile traveled.

A Distress Rating Index value is calculated for each of the individual distresses at the 0.02 mile, or every 105.6 feet.

### Rating Index Formulas

**Alligator Cracking Index** =  $100 - [40 * ( \%low/70 + \%medium/30 + \%high/10 )]$

**Longitudinal Cracking Index** =  $100 - [40 * ( \%low/350 + \%medium/200 + \%high/75 )]$

**Transverse Cracking Index** =  $100 - [(20 * ( low/15.1 + medium/7.5)) + (40 * (high/1.9))]$

**Patching Index** =  $100 - [40 * ( \%patching / 80 )]$

**Rutting Index:**  $100 - [40 * ((low/160) + (med/80) + (high/40))]$

**Roughness Condition Index: (RCI)** =  $32 * [5 * e^{(-0.0041 * \text{average IRI})}]$

These 0.02 Distress Rating Index values are then averaged over one mile sections for the mile-by-mile Distress Rating Indexes, Surface Condition Rating (SCR) and Pavement Condition Rating (PCR).

**Surface Condition Rating (SCR)** =  $100 - [(100 - AC\_INDEX) + (100 - LC\_INDEX) + (100 - TC\_INDEX) + (100 - PATCH\_INDEX) + (100 - RUT\_INDEX)]$

**Pavement Condition Rating (PCR)** =  $( SCR * 0.60 ) + ( RCI * 0.40 )$

NOTE: Collection of roughness data is dependant on the data collection vehicle traveling at a minimum speed of 12 mph. In the event that a route cannot be safely traveled at this minimum speed, and results in no roughness data, the SCR only will be calculated.

## **Parking Lot and Manually Rated Road Condition Rating**

### **Surface Condition Distresses- Chip Seal:**

Raveling – loss of surface rock chips revealing previous surface

Bleeding – asphalt or tar is bleeding through to the surface where surface looks slick with asphalt

Rutting

Potholes/Patching

### **Ratings - Chip Seal:**

Excellent – None of the surface affected by the above (recently constructed)

Good – Less than 10% of surface affected by the above

Fair – Between 10% and 40% of surface affected by the above

Poor – More than 40% of surface affected by the above

### **Surface Condition - Asphalt:**

Cracking of any type

Rutting

Potholes/Patching

### **Ratings - Asphalt:**

Excellent – None of the surface affected by the above (recently constructed)

Good – Less than 10% of surface affected by the above

Fair – Between 10% and 40% of surface affected by the above

Poor – More than 40% of surface affected by the above

## **Index Values of Visual Ratings on Parking Lots and Manually Rated Roads**

Excellent	97
Good	90
Fair	73
Poor	45

### Drainage Condition Rating Definitions

- Good:** Minimal overall drainage problems. If funding were available for pavement maintenance, 25% or less is estimated to correct drainage deficiencies.
- Poor:** Problems exist that jeopardizes the integrity of the road in this section. If funding were available for pavement maintenance, 50% to 100% is estimated to correct drainage deficiencies.

### Drainage Condition Rating Criteria

The following are examples of basic criteria to help the rater to identify the different drainage ratings. While in the field, many other flaws will be discovered, but these criteria should give a feel for where the flaws would apply in the ratings.

#### **Good Drainage**

Most water clears the road prism adequately with little concern of base saturation.

- X Pavement has minor deficiencies that interrupt water flow.
- X Shoulders are mostly adequate as they relate to surrounding terrain. Shoulder design generally coincides with the drainage design.
- X Curbs have deficiencies, but still function without erosion.
- X Down drains are placed properly, but show signs of some deterioration.
- X Culverts are adequate in numbers and size however, minor deficiencies are evident.
- X Ditches are not paved, but solid and have enough area to maintain and carry required volume of water.

#### **Poor Drainage**

This section has areas of inadequate drainage ability that is causing base saturation that could cause a road failure.

- X Pavement grade is irregular and holds dangerous amounts of water (hydroplaning is a concern), or shows massive alligator cracking.
- X Shoulder design induces ponding that encroaches on the pavement (drivers try to avoid ponds).
- X Portions of curbs are missing, allowing water to escape causing erosion.
- X Drop inlets, due to various reasons, are only able to drain 50% or less efficiently.
- X Down drains show signs of water exiting in areas by the down drain causing erosion.
- X Culverts are functionally deficient including size, installation, location, or grade giving water opportunity to saturate the road base.
- X Ditches allow water opportunity to saturate the road base through various reasons such as low places in ditch where design has not allowed for water to drain, little or no room in the road prism for a needed ditch, or water is disappearing within the ditch.

### Shoulder Condition Rating Definitions

- Good:** The shoulder is generally in good functional condition.. If curbs are present, they are functional.
- Poor:** There is no shoulder because erosion has removed it. If curbs are present, they need to be replaced.

### **Shoulder Rating Criteria**

The following are examples of basic criteria to help the rater to identify the different shoulder ratings. While in the field, many other flaws will be discovered, but these criteria should give a feel for where the flaws would apply in the ratings.

#### **Good Shoulders**

- X If shoulder is unpaved drop-offs are less than 1", but grading is required.
- X If shoulder is paved rut depth is less than 1/2", sealed cracks are present, and grading is required.
- X If curbs are present they are functional.

#### **Poor Shoulder**

- X If shoulder is unpaved drop-offs are greater than 4" and erosion has removed the shoulder.
- X If shoulder is paved rut depth is greater than 1". Open cracks are greater than 1/4" deep, and erosion has removed the shoulder.
- X If curbs are present they need replacement.
- X If curbs are present they need repairs, and there is erosion behind the curb.

## **APPENDIX C: DIGITAL IMAGE INFORMATION**

All images collected in Cycle 3 are digital images. These images provide the best resolution for identifying sign inventories and pavement evaluations. The images can be viewed with an interactive software program called **Visi-Data**. Each park will have a copy of the Visi-Data program installed in the park for park personnel to access and use.

Only Cycle 3 data can be queried and reviewed using the Visi-Data software program. This program is a multimedia data presentation and analysis tool that can be accessed either at the individual park, park region or at NPS headquarters. The data is organized in a hierarchical manner and presented in tabular and graphical formats. The user is able to perform queries and drill down through the data to find the particular information they are trying to query. Associated digital right-of-way images from either the LAN, USB port, individual DVD, or from the Visi-web application, can be presented along with the GPS locations.

## APPENDIX D: METADATA

### ARAN ROUTE GPS DATA

Background information of route spatial data.

**GPS Records:** GPS data for NPS routes is stored in the MS Access database for the park. The coordinates of the road traces are stored in the 'PMS\_20' table in the 'GPS\_LAT' and 'GPS\_LON' fields.

**Data Collection Device:**

Vehicle Information: Ford Van  
Type of GPS Unit: NovAtel MiLLennium, 12 channel, dual frequency L1/L2, DGPS ready receiver w/MiLLennium 502 GPS antenna and OmniSTAR System 3000 LR  
Inertial System: Applanix POS LV

**Accuracy:** Expected ground accuracy is 1 meter \*

\*The above accuracy assumes good GPS mission planning resulting in maximum GPS satellite observation and ideal environmental conditions. Due to less than ideal satellite and environmental conditions, some routes may lack the expected ground accuracy.

**Geographic Datum:** WGS 1984

**Post Collection GPS Correction:** Due to unanticipated GPS collection inaccuracies, some route locations have been digitized using DOQQ's and other data sources.

## FHWA – NPS Road Inventory Program Cycle 3 Metadata for the Park Database

The purpose of these sheets is to provide users of the Road Inventory Program's data with data accuracies and tolerances to help users define ways in which the RIP data can and cannot be used. For further information on specifics of data collection equipment, data collection procedures, equipment calibrations, or quality control/quality assurance procedures, please contact Jim Kennedy, Project Manager, Data Quality Assurance, at 720-963-3560 or jim.kennedy@fhwa.dot.gov.

All Road Inventory Program data undergoes quality control and quality assurance testing. This document represents the known data accuracies and tolerances for the data collection equipment, data collection procedures, and data processing procedures currently in use. Many additional tests conducted on the park databases during the quality assurance phase to ensure data integrity are not listed as a part of this document. Before it is delivered, a park database undergoes a large set of table design consistency, field data format consistency, data completeness, uniqueness of key fields, data reasonableness, acceptable data range, within-field data consistency, between-field data consistency, and between-table data consistency tests. Additional data sampling checks are conducted to ensure proper data upload from raw files into the park database and to quality check the pavement crack analysis. Further information is detailed in the FHWA – NPS RIP Quality Assurance Manual, available upon request.

This description of metadata includes only the known accuracies with which a data field matches its expected value. The tables that follow this page show each database field's:

- Field – field name
- Format – data type and number of characters of field
- Expected Value – meaning of value assigned to field
- Source – when in process field value obtained
- Validation – how field value obtained
- Expected Accuracy – accuracy with which contents of field match Expected Value

Verifying and continually improving the accuracy of Road Inventory Program data is an ongoing goal of the Federal Highway Administration and the National Park Service. Field testing and post-collection analysis of ARAN (Automatic Road Analyzer) -collected data will continue in Cycle 4. Data quality is expected to improve as the FHWA – NPS Road Inventory Program continues to operate, due to the fact that future data collection cycles will consist in large part of data updates. Also, technological improvements are expected to render the data increasingly consistent with actual roadway conditions as data collection cycles progress.

### Specific Caveats

- Three canned reports are titled “Features in Good Condition”, “Features in Fair Condition,” and “Features in Poor Condition.” These titles could be misleading. In Cycle 3, condition assessments have been conducted on **signs only**. Condition assessments have not been conducted on non-sign features, such as culverts, guardrails, pullouts, etc. Although the database and canned reports might report a default value of “good” for un-assessed features, these condition values are not valid for import into FMSS.
- Database records that show a concrete surface type sometimes include index values that seem to show a perfect roadway (e.g., a Pavement Condition Rating (PCR) of 100). The Road Inventory Program does not actually conduct condition assessments of concrete surfaces. The perfect values are just default values assigned to unassessed sections of pavement and do not represent an assessment of the roadway surface's quality.
- On the USB drive, in the Database folder, parks are provided with intersection lists and exceptions lists. These documents should be treated as raw files and are **not accurate**. Refer to the final database for accurately post-processed intersection data.
- Most roadway data is collected in the primary direction lane of a roadway. To save data storage

space and to reduce data analysis efforts, the assumption was made that the paved surface condition of a route's primary lane adequately represents the surface condition of the full roadway. Therefore, in the database, opposite-direction records in the PMS\_Visidata table do not include assessed values for roadway surface distresses. Values such as 0, N/A, -1, or a repeat of the primary-direction assessed value indicate that no assessment was performed. The PMS\_20 and PMS\_Mile tables simply exclude all opposite routes.

- Most roadway features are collected relative to the primary direction lane of a roadway, using the primary-direction video. Signs are the only features collected using the opposite-direction video.

### **Key to Notes in Tables**

(1): Note that only one value fits in field, so even if this value varies throughout the route, only one value is recorded here.

(2): Note that some MP values listed here are estimates recorded during the Route ID process for use by the data collection crew (e.g. "FROM ROUTE 0010 AT MILEPOST 30.3"). They are estimates only and are not expected to match the more accurate milepost values included elsewhere in the database in the BEG\_MP, END\_MP, and MP fields.

(3): Mileage is measured by the ARAN (Automatic Road ANalyzer) data collection vehicle out to the 0.001 decimal place. The DMI (distance measuring instrument) is very accurate, with extremely slight variations in measurement due to air temperature, tire inflation, curves, hills, and equipment calibration.

(4): Features are measured differently depending on whether they are visible in the forward-facing video of the roadway, but every feature milepost measurement depends on the baseline measurement of the data collection vehicle's mileage. The ARAN (Automatic Road ANalyzer) data collection vehicle's mileage is measured by the DMI (distance measuring instrument) out to the 0.001 decimal place. The DMI is very accurate, with extremely slight variations in measurement due to air temperature, tire inflation, curves, hills, and equipment calibration. If a feature will not be visible in the forward-facing video, its milepost is determined by the data collectors' key press tagging the milepost when the ARAN passes the feature. Key presses are entered into the ARAN software when the vehicle travels typically between 15 and 45 miles/hour, so a delay of a single second as the vehicle passes a feature would result in an inaccuracy of 0.004 miles (22 feet) to 0.012 miles (66 feet). If a feature is visible in the video, its milepost is determined during post-processing using a video measurement software called Surveyor. Features along the side of a roadway that are measured using the Surveyor software might not be located very accurately. Surveyor is known to be most accurate when measuring quantities near the center of the video frame, as opposed to in the edges of the video image.

(5): Only signs are evaluated for condition. No other features' conditions are assessed, so "N/A" was originally intended to be the default value for unassessed features. However, some non-sign features do have condition ratings in the database. These are not accurate, because no assessment was ever done on non-sign features.

(6): Condition assessments are not conducted on concrete (CO) surface types. Perfect values for concrete road sections are default values and do not represent a condition assessment of the concrete surfaces.

(7): Roadway cracking presence, type, severity, and extent are determined by filming the roadway in the primary lane continuously with two overlapping analog cameras of 640 x 480 resolution. The images from both cameras are stitched together in real time to create a continuous strip image of the roadway pavement in the primary lane. Cracks 3 mm or greater in width are visible in this video. A semi-automatic process running the WiseCrax software with additional input by human operators provides the cracking quantities recorded in these database fields. Quality checks have determined that a consistent 80% or better of the visible cracks are recorded.



## Access Database Metadata

### Master Table Metadata:

FIELD	FORMAT	EXPECTED VALUE	SOURCE	VALIDATION	EXPECTED ACCURACY
RIP_CYCLE	X	3, for data collection cycle 3	Route ID Meeting	FHWA Determination	100%
STATE	XX	State where route is located	Route ID Meeting	Park Input/FHWA Determination	Untested. (1)
PARK_ALPHA	XXXX	Park alpha code	Route ID Meeting	NPS References	Untested
PARK_NO	XXXX	Park numeric code	Route ID Meeting	NPS References	Untested
RTE_NO	XXXXXX	Route number	Route ID Meeting	Park Input/FHWA Classification	Untested
RTE_NAME	(Text)	Route name	Route ID Meeting	Park Input	Untested. 50 characters fit in field
FUNCT_CLAS	X	Route functional classification	Route ID Meeting	Park Input/FHWA Classification	Untested
DIRECTION	XXX	Survey lane: PRI (primary) or OPP (opposite)	Route ID Meeting	Park Input/FHWA Determination	Untested
BEG_MP_EST	999.999 (miles)	Estimated starting MP	Route ID Meeting	Park Input/FHWA Determination	Estimated before data collected
END_MP_EST	999.999 (miles)	Estimated ending MP	Route ID Meeting	Park Input/FHWA Determination	Estimated before data collected
RTE_LENGTH	999.999 (miles)	Collected route length	ARAN Data Collection	Automatic Output	100%
FROM_DESC	(Text)	Beginning terminus of route	Route ID Meeting	Park Input/FHWA Determination	Estimated before data collected. (2)
TO_DESC	(Text)	Ending terminus of route	Route ID Meeting	Park Input/FHWA Determination	Estimated before data collected. (2)
NO_LANES	X	Number of lanes in route	ARAN Data Collection	Survey Crew Input	Untested. (1)
SURF_TYPE	XX	Surface type of route	ARAN Data Collection	Survey Crew Input	Untested. (1)
COMP_DIR	XX	Compass direction of route's primary lane (nearest cardinal direction)	Route ID Meeting	Park Input/FHWA Determination	Untested
COMMENTS	(Text)	Special information, if any	Contractor Post-processing	Contractor Input	Untested
FILENAME	XXXXXXXXXX	Filename of raw data files	ARAN Data Collection	Automatic Output	100%
SECTION	XXXXXX	Route section ID	Route ID Meeting/ARAN Data Collection	Survey Crew Input/Automatic Output	100%
FKEY	9999999	Unique record ID	Contractor Post-processing	Database Processing	100%
DATE	DD/MM/YY	Data collection date	ARAN Data Collection	Automatic Output	100%
BEG_MP	999.999 (miles)	Beginning MP collected	ARAN Data Collection	Automatic Output	100% (3)
END_MP	999.999 (miles)	Ending MP collected	ARAN Data Collection	Automatic Output	100% (3)

**PMS\_Feature Table Metadata:**

FIELD	FORMAT	EXPECTED VALUE	SOURCE	VALIDATION	EXPECTED ACCURACY
RIP_CYCLE	X	3, for data collection cycle 3	Route ID Meeting	FHWA Determination	100%
STATE	XX	State where route is located	Route ID Meeting	Park Input/FHWA Determination	Untested. (1)
PARK_ALPHA	XXXX	Park alpha code	Route ID Meeting	NPS References	Untested
PARK_NO	XXXX	Park numeric code	Route ID Meeting	NPS References	Untested
RTE_NO	XXXXXXXX	Route number	Route ID Meeting	Park Input/FHWA Classification	Untested
FUNCT_CLAS	X	Route functional class	Route ID Meeting	Park Input/FHWA Classification	Untested
DIRECTION	XXX	Survey lane: PRI (primary) or OPP (opposite)	Route ID Meeting	Park Input/FHWA Determination	Untested
MP	999.999 (miles)	Feature location along route	ARAN Data Collection/Contractor Post-processing	Survey Crew Input/Video Processing	Untested (4)
EVENT	XXXX	Event category of feature	Contractor Post-processing	Video Processing	Untested
EVENT_CODE	XXXX	Event sub-category of feature	Contractor Post-processing	Video Processing	Untested
EVENT_DESC	(Text)	Description of feature/contents of sign	Contractor Post-processing	Video Processing	Untested
MUTCD	"N/A"	N/A. Intended to be sign MUTCD code	Contractor Post-processing	Database Processing	Values inaccurate, defaulted to N/A
CONDITION	XXX	Sign condition (G-D, F-R, P-R, N/A)	Contractor Post-processing	Video Processing	Untested (5)
COMMENT	(Text)	Sign label, intersecting route, etc.	Contractor Post-processing	Database Processing	Untested
OFFSET	"N/A"	N/A. Intended to be offset from pavement edge	Contractor Post-processing	Database Processing	Values inaccurate, defaulted to N/A
SIDE	XXX	Side of route; "N/A" if not on one side	Contractor Post-processing	Video Processing	Untested
STR_NUMBER	XXXXXXXXXXXX	FHWA bridge structure number	FHWA Post-processing	Database Processing	Untested
GPS_LAT	"N/A"	N/A. Intended to be latitude coordinate	Contractor Post-processing	Database Processing	Values inaccurate, defaulted to N/A
GPS_LON	"N/A"	N/A. Intended to be longitude coordinate	Contractor Post-processing	Database Processing	Values inaccurate, defaulted to N/A
GPS_ELEV	"N/A"	N/A. Intended to be elevation	Contractor Post-processing	Database Processing	Values inaccurate, defaulted to N/A
GPS_MODE	"N/A"	N/A. Intended to be GPS mode	Contractor Post-processing	Database Processing	Values inaccurate, defaulted to N/A
VIDEO	<Park-C03VID-#>	Removable USB video hard drive number	Contractor Post-processing	Database Processing	Untested
IMAGE	(Text)	Filename of .jpg image showing feature	Contractor Post-processing	Automatic Output	Untested
DATE	DD/MM/YY	Data collection date	ARAN Data Collection	Automatic Output	100%
FILENAME	XXXXXXXXXX	Filename of raw data files	ARAN Data Collection	Automatic Output	100%
SECTION	XXXXXX	Route section ID	Route ID Meeting/ARAN Data Collection	Survey Crew Input/Automatic Output	100%
FKEY	9999999	Unique record ID	Contractor Post-processing	Database Processing	100%
VISL_FROM	999999 (millimiles)	Raw MP of first video frame showing feature	Contractor Post-processing	Database Processing	Untested
VISL_TO	999999 (millimiles)	Raw MP of last video frame showing feature	Contractor Post-processing	Database Processing	Untested

FIELD	FORMAT	EXPECTED VALUE	SOURCE	VALIDATION	EXPECTED ACCURACY
IDKEY	(Text)	Unique record ID used by VisiData	Contractor Post-processing	Database Processing	Untested
MP_REF	(Text)	Range of mileage to play in VisiData	Contractor Post-processing	Database Processing	Untested

**PMS 20, PMS Mile & PMS Visidata Tables Metadata:**

FIELD	FORMAT	EXPECTED VALUE	SOURCE	VALIDATION	EXPECTED ACCURACY
RIP_CYCLE	X	3, for data collection cycle 3	Route ID Meeting	FHWA Determination	100%
STATE	XX	State where route is located	Route ID Meeting	Park Input/FHWA Determination	Untested. (1)
PARK_ALPHA	XXXX	Park alpha code	Route ID Meeting	NPS References	Untested
PARK_NO	XXXX	Park numeric code	Route ID Meeting	NPS References	Untested
RTE_NO	XXXXXX	Route number	Route ID Meeting	Park Input/FHWA Classification	Untested
FUNCT_CLASS	X	Route functional class	Route ID Meeting	Park Input/FHWA Classification	Untested
DIRECTION	XXX	Survey lane: PRI (primary) or OPP (opposite)	Route ID Meeting	Park Input/FHWA Determination	Untested
BEG_MP	999.999 (miles)	MP at start of road interval described by database record	Contractor Post-processing	Database Processing	100% (3)
END_MP	999.999 (miles)	MP at end of road interval described by database record	Contractor Post-processing	Database Processing	100% (3)
INT_LENGTH	999.9 (ft)	Length of road interval as aggregated for data table	Contractor Post-processing	Database Processing	100%
RTE_LENGTH	999.999 (miles)	Collected route length	ARAN Data Collection	Automatic Output	100%
NO_LANES	X	Number of lanes in route	ARAN Data Collection	Survey Crew Input	Untested. (1)
LANE_NO	X	Data collection lane	Contractor Post-processing	Database Processing	Untested
WX_LANE_WIDTH	99.999 (ft)	WiseCrax (crack detection software) analysis width	Contractor Post-processing	Automatic Output	Untested
LANE_WIDTH	99.999 (ft)	Width of lane	Contractor Post-processing	Video Processing	Untested
PAVE_WIDTH	99.999 (ft)	Full pavement width	Contractor Post-processing	Video Processing	Untested
SHLD_WIDTH_L	99.999 (ft)	Left shoulder width	Contractor Post-processing	Video Processing	Untested
SHLD_WIDTH_R	99.999 (ft)	Right shoulder width	Contractor Post-processing	Video Processing	Untested
SHLD_COND_L	XXXX	Left shoulder condition	ARAN Data Collection	Survey Crew Input	Untested
SHLD_COND_R	XXXX	Right shoulder condition	ARAN Data Collection	Survey Crew Input	Untested
DRAIN_COND_L	XXXX	Left drainage condition	ARAN Data Collection	Survey Crew Input	Untested
DRAIN_COND_R	XXXX	Right drainage condition	ARAN Data Collection	Survey Crew Input	Untested
SURF_TYPE	XX	Surface type of route	ARAN Data Collection	Survey Crew Input	Untested. (1)
PCR	999	Pavement Condition Rating	Contractor Post-processing	Database Processing	100% for calculation (6)
RCI	999	Roughness Condition Index; -1 if invalid IRI	Contractor Post-processing	Database Processing	100% for calculation

FIELD	FORMAT	EXPECTED VALUE	SOURCE	VALIDATION	EXPECTED ACCURACY
SCR	999	Surface Condition Rating	Contractor Post-processing	Database Processing	100% for calculation (6)
IRI_AVG	999.9 (inches/mile)	Average IRI	Contractor Post-processing	Database Processing	Untested
IRI_SD	999.9 (inches/mile)	IRI standard deviation	Contractor Post-processing	Database Processing	Untested
IRI_L	999.9 (inches/mile)	Left wheel path IRI	ARAN Data Collection	Automatic Output	Untested
IRI_R	999.9 (inches/mile)	Right wheel path IRI	ARAN Data Collection	Automatic Output	Untested
IRI_FLAG	0 or -1	-1 if invalid IRI data	Contractor Post-processing	Database Processing	Untested
RUT_INDEX	999	Rut index	Contractor Post-processing	Database Processing	100% for calculation (6)
RUT_AVG	99.99 (inches)	Average rut depth of both wheelpaths	Contractor Post-processing	Database Processing	Untested (6)
RUT_MAX	99.99 (inches)	Maximum rut depth of both wheelpaths	Contractor Post-processing	Database Processing	Untested (6)
RUT_SD	9.9	Rut depth standard deviation	Contractor Post-processing	Database Processing	Untested (6)
RUT_LOW	999 (%)	Percent of low severity ruts (on a 0-200% scale) in both wheelpaths	Contractor Post-processing	Database Processing	Untested (6)
RUT_MED	999 (%)	Percent of medium severity ruts (on a 0-200% scale) in both wheelpaths	Contractor Post-processing	Database Processing	Untested (6)
RUT_HI	999 (%)	Percent of high severity ruts (on a 0-200% scale) in both wheelpaths	Contractor Post-processing	Database Processing	Untested (6)
XFALL	999.9 (% slope)	Cross fall at start of road interval	ARAN Data Collection	Automatic Output	Precise but inaccurate. Not reported in Cycle 4
GRADE	999.9 (% slope)	Grade at start of road interval	ARAN Data Collection	Automatic Output	Precise but inaccurate. Not reported in Cycle 4
AC_INDEX	999	Alligator cracking index	Contractor Post-processing	Database Processing	100% for calculation (6)
AC_LOW	999.9999 (%)	Percent of WiseCrax measured lane area with low-severity alligator cracking	Contractor Post-processing	Automatic Output	(6) (7)
AC_MED	999.9999 (%)	Percent of WiseCrax measured lane area with medium-severity alligator cracking	Contractor Post-processing	Automatic Output	(6) (7)
AC_HI	999.9999 (%)	Percent of WiseCrax measured lane area with high-severity alligator cracking	Contractor Post-processing	Automatic Output	(6) (7)
LC_INDEX	999	Longitudinal cracking index	Contractor Post-processing	Database Processing	100% for calculation (6)
LC_LOW	999.99 (%)	Low-severity longitudinal cracking in lane as a percentage of road interval length	Contractor Post-processing	Automatic Output	(6) (7)
LC_MED	999.99 (%)	Medium-severity longitudinal cracking in lane as a percentage of road interval length	Contractor Post-processing	Automatic Output	(6) (7)
LC_HI	999.99 (%)	High-severity longitudinal cracking in lane as a percentage of road interval length	Contractor Post-processing	Automatic Output	(6) (7)
TC_INDEX	999	Transverse cracking index	Contractor Post-processing	Database Processing	100% for calculation (6)
TC_LOW	999.99 (cracks)	Count of low-severity transverse cracks, where one crack unit equals the WiseCrax measured lane width	Contractor Post-processing	Automatic Output	(6) (7)
TC_MED	999.99 (cracks)	Count of medium-severity transverse cracks, where one crack unit equals the WiseCrax measured lane width	Contractor Post-processing	Automatic Output	(6) (7)
TC_HI	999.99 (cracks)	Count of high-severity transverse cracks, where one crack unit equals the WiseCrax measured lane width	Contractor Post-processing	Automatic Output	(6) (7)
PATCH_INDEX	999	Patching index	Contractor Post-processing	Database Processing	100% for calculation (6)

FIELD	FORMAT	EXPECTED VALUE	SOURCE	VALIDATION	EXPECTED ACCURACY
PATCHING	999.9999 (%)	Percent of WiseCrax measured lane area affected by patching	Contractor Post-processing	Manual Pavement Video Processing	Untested (6)
GPS_LAT	999.9999999	Latitude coordinate	ARAN Data Collection	Automatic Output	See GPS Metadata sheet distributed with data
GPS_LON	-999.9999999	Longitude coordinate	ARAN Data Collection	Automatic Output	See GPS Metadata sheet distributed with data
GPS_ELEV	999999.9	Elevation	ARAN Data Collection	Automatic Output	See GPS Metadata sheet distributed with data
GPS_MODE	XXX	GPS mode during collection	ARAN Data Collection	Automatic Output	See GPS Metadata sheet distributed with data
VIDEO	<Par/>C03VID<#>	Removable USB video hard drive number	Contractor Post-processing	Database Processing	Untested
IMAGE	(Text)	Filename of .jpg image showing road interval	Contractor Post-processing	Automatic Output	Untested
SPEED	999 (miles/hour)	Average ARAN speed during data collection	ARAN Data Collection	Automatic Output	Untested
BRIDGE_FLAG	0 or 1	Flag indicating presence of bridge in interval	ARAN Data Collection	Survey Crew Input	Untested
CONSTR_FLAG	0 or 1	Flag indicating construction in interval	ARAN Data Collection	Survey Crew Input	Untested
LANEDEV_FLG	0 or 1	Flag indicating lane deviation in interval	ARAN Data Collection	Survey Crew Input	Untested
DATE	DD/MM/YY	Data collection date	ARAN Data Collection	Automatic Output	100%
NODISTRESS	0 OR 1	Flag indicating absence of pavement distress	Contractor Post-processing	Database Processing	100%
FILENAME	XXXXXXXXXX	Filename of raw data files	ARAN Data Collection	Automatic Output	100%
SECTION	XXXXXX	Route section ID	Route ID Meeting/ARAN Data Collection	Survey Crew Input/Automatic Output	100%
FKEY	9999999	Unique record ID	Contractor Post-processing	Database Processing	100%
VISL_FROM	999999 (millimiles)	Raw MP of first video frame in section	Contractor Post-processing	Database Processing	Untested
VISL_TO	999999 (millimiles)	Raw MP of last video frame in section	Contractor Post-processing	Database Processing	Untested
IDKEY	(Text)	Unique record ID used by VisiData	Contractor Post-processing	Database Processing	Untested
MP_REF	(Text)	Range of mileage to play in VisiData	Contractor Post-processing	Database Processing	Untested

## **Cycle   Shapefile Metadata**

Metadata is provided for all shapefiles used for the creation of RIP report documents. The metadata for each shapefile associated with the park can be found in Section 10 of the PDF report provided on your park CD.

All shapefiles have the following spatial characteristics:

*Geographic\_Coordinate\_Units*: Decimal degrees  
*Spheroid*: WGS 1984







# obri\_pkg\_03\_map

Metadata also available as

## Metadata:

- [Identification Information](#)
  - [Data Quality Information](#)
  - [Spatial Data Organization Information](#)
  - [Spatial Reference Information](#)
  - [Entity and Attribute Information](#)
  - [Distribution Information](#)
  - [Metadata Reference Information](#)
- 

### *Identification\_Information:*

#### *Citation:*

##### *Citation\_Information:*

##### *Originator:*

REQUIRED: The name of an organization or individual that developed the data set.

##### *Publication\_Date:*

REQUIRED: The date when the data set is published or otherwise made available for release.

*Title:* obri\_pkg\_03\_map

*Geospatial\_Data\_Presentation\_Form:* vector digital data

##### *Online\_Linkage:*

\\PANGEA\JOBS\FHWA\_RoadInvProg\Data\Park\_Source\_Data\OBRI\_5640\Cycle3\_shape\obri\_pkg\_03\_map.shp

### *Description:*

*Abstract:* REQUIRED: A brief narrative summary of the data set.

#### *Purpose:*

REQUIRED: A summary of the intentions with which the data set was developed.

### *Time\_Period\_of\_Content:*

#### *Time\_Period\_Information:*

##### *Single\_Date/Time:*

*Calendar\_Date:* 11/19/2002

#### *Currentness\_Reference:*

REQUIRED: The basis on which the time period of content information is determined.

### *Status:*

*Progress:* REQUIRED: The state of the data set.

#### *Maintenance\_and\_Update\_Frequency:*

REQUIRED: The frequency with which changes and additions are made to the data set after the initial data set is completed.

### *Spatial\_Domain:*

#### *Bounding\_Coordinates:*

*West\_Bounding\_Coordinate:* -84.716724

*East\_Bounding\_Coordinate:* -84.660156  
*North\_Bounding\_Coordinate:* 36.102192  
*South\_Bounding\_Coordinate:* 36.068485

*Keywords:*

*Theme:*

*Theme\_Keyword\_Thesaurus:* OBRI  
*Theme\_Keyword:* OBRI

*Access\_Constraints:*

REQUIRED: Restrictions and legal prerequisites for accessing the data set.

*Use\_Constraints:*

REQUIRED: Restrictions and legal prerequisites for using the data set after access is granted.

*Native\_Data\_Set\_Environment:*

Microsoft Windows 2000 Version 5.1 (Build 2600) Service Pack 2; ESRI ArcCatalog 8.3.0.800

---

*Data\_Quality\_Information:*

*Lineage:*

---

*Spatial\_Data\_Organization\_Information:*

*Direct\_Spatial\_Reference\_Method:* Vector

*Point\_and\_Vector\_Object\_Information:*

*SDTS\_Terms\_Description:*

*SDTS\_Point\_and\_Vector\_Object\_Type:* G-polygon  
*Point\_and\_Vector\_Object\_Count:* 5

---

*Spatial\_Reference\_Information:*

*Horizontal\_Coordinate\_System\_Definition:*

*Geographic:*

*Latitude\_Resolution:* 0.000000  
*Longitude\_Resolution:* 0.000000  
*Geographic\_Coordinate\_Units:* Decimal degrees

*Geodetic\_Model:*

*Horizontal\_Datum\_Name:* North American Datum of 1927  
*Ellipsoid\_Name:* Clarke 1866  
*Semi-major\_Axis:* 6378206.400000  
*Denominator\_of\_Flattening\_Ratio:* 294.978698

---

*Entity\_and\_Attribute\_Information:*

*Detailed\_Description:*

*Entity\_Type:*

*Entity\_Type\_Label:* obri\_pkg\_03\_map

*Attribute:*

*Attribute\_Label:* FID  
*Attribute\_Definition:* Internal feature number.  
*Attribute\_Definition\_Source:* ESRI  
*Attribute\_Domain\_Values:*  
*Unrepresentable\_Domain:*  
Sequential unique whole numbers that are automatically generated.

*Attribute:*

*Attribute\_Label:* Shape  
*Attribute\_Definition:* Feature geometry.  
*Attribute\_Definition\_Source:* ESRI  
*Attribute\_Domain\_Values:*  
*Unrepresentable\_Domain:* Coordinates defining the features.

*Attribute:*

*Attribute\_Label:* PARK\_ALPHA

*Attribute:*

*Attribute\_Label:* RTE\_NO

*Attribute:*

*Attribute\_Label:* RTE\_NAME

*Attribute:*

*Attribute\_Label:* FEATURE

*Attribute:*

*Attribute\_Label:* SURF\_TYPE

*Attribute:*

*Attribute\_Label:* CONDITION

*Attribute:*

*Attribute\_Label:* PHOTOS

*Attribute:*

*Attribute\_Label:* COMMENT

*Attribute:*

*Attribute\_Label:* GPS\_DATE

*Attribute:*

*Attribute\_Label:* DATAFILE

*Attribute:*

*Attribute\_Label:* SQ\_FT

---

*Distribution\_Information:*

*Resource\_Description:* Downloadable Data

*Standard\_Order\_Process:*

*Digital\_Form:*

*Digital\_Transfer\_Information:*

*Transfer\_Size:* 0.017

---

*Metadata\_Reference\_Information:*

*Metadata\_Date:* 20050722

*Metadata\_Contact:*

*Contact\_Information:*

*Contact\_Organization\_Primary:*

*Contact\_Organization:*

REQUIRED: The organization responsible for the metadata information.

*Contact\_Person:* REQUIRED: The person responsible for the metadata information.

*Contact\_Address:**Address\_Type:*

REQUIRED: The mailing and/or physical address for the organization or individual.

*City:* REQUIRED: The city of the address.

*State\_or\_Province:* REQUIRED: The state or province of the address.

*Postal\_Code:* REQUIRED: The ZIP or other postal code of the address.

*Contact\_Voice\_Telephone:*

REQUIRED: The telephone number by which individuals can speak to the organization or individual.

*Metadata\_Standard\_Name:* FGDC Content Standards for Digital Geospatial Metadata

*Metadata\_Standard\_Version:* FGDC-STD-001-1998

*Metadata\_Time\_Convention:* local time

*Metadata\_Extensions:*

*Online\_Linkage:* <<http://www.esri.com/metadata/esriprof80.html>>

*Profile\_Name:* ESRI Metadata Profile

---

Generated by [mp](#) version 2.7.33 on Fri Jul 22 09:45:26 2005

# obri\_nonnps

Metadata also available as

## Metadata:

- [Identification Information](#)
  - [Data Quality Information](#)
  - [Spatial Data Organization Information](#)
  - [Spatial Reference Information](#)
  - [Entity and Attribute Information](#)
  - [Distribution Information](#)
  - [Metadata Reference Information](#)
- 

### *Identification\_Information:*

#### *Citation:*

##### *Citation\_Information:*

*Originator:* The TSR Group

*Publication\_Date:* 2005

*Title:* obri\_nonnps

*Geospatial\_Data\_Presentation\_Form:* vector digital data

*Online\_Linkage:* Not Available

#### *Description:*

*Abstract:* non-NPS roads

*Purpose:* Road Inventory Program

##### *Supplemental\_Information:*

Data created by The TSR Group from heads-up digitizing of roads representing non-NPS roads for graphic purposes

#### *Time\_Period\_of\_Content:*

##### *Time\_Period\_Information:*

##### *Single\_Date/Time:*

*Calendar\_Date:* 2005

*Currentness\_Reference:* ground condition

#### *Status:*

*Progress:* Complete

*Maintenance\_and\_Update\_Frequency:* As per RIP cycle

#### *Spatial\_Domain:*

##### *Bounding\_Coordinates:*

*West\_Bounding\_Coordinate:* -84.716774

*East\_Bounding\_Coordinate:* -84.657686

*North\_Bounding\_Coordinate:* 36.102050

*South\_Bounding\_Coordinate:* 36.068434

#### *Keywords:*

##### *Theme:*

*Theme\_Keyword\_Thesaurus:* OBRI

*Theme\_Keyword:* OBRI

*Access\_Constraints:* None

*Use\_Constraints:* Redistribution needs permission from EFLHD/NPS

*Point\_of\_Contact:*

*Contact\_Information:*

*Contact\_Person\_Primary:*

*Contact\_Person:* Dan VanGilder

*Contact\_Organization:* EFLHD

*Contact\_Position:* GIS Coordinator

*Contact\_Address:*

*Address\_Type:* mailing and physical address

*Address:* 21400 Ridgetop Circle

*City:* Sterling

*State\_or\_Province:* Virginia

*Postal\_Code:* 20166

*Country:* United States

*Contact\_Voice\_Telephone:* 703-404-6361

*Contact\_Electronic\_Mail\_Address:* dvangilder@fhwa.dot.gov

*Native\_Data\_Set\_Environment:*

Microsoft Windows 2000 Version 5.1 (Build 2600) Service Pack 2; ESRI ArcCatalog  
8.3.0.800

---

*Data\_Quality\_Information:*

*Attribute\_Accuracy:*

*Attribute\_Accuracy\_Report:* Good

*Completeness\_Report:* Complete for non-NPS roads

*Lineage:*

*Source\_Information:*

*Type\_of\_Source\_Media:* Heads-up digitized

---

*Spatial\_Data\_Organization\_Information:*

*Direct\_Spatial\_Reference\_Method:* Vector

*Point\_and\_Vector\_Object\_Information:*

*SDTS\_Terms\_Description:*

*SDTS\_Point\_and\_Vector\_Object\_Type:* String

*Point\_and\_Vector\_Object\_Count:* 3

---

*Spatial\_Reference\_Information:*

*Horizontal\_Coordinate\_System\_Definition:*

*Geographic:*

*Latitude\_Resolution:* 0.000000

*Longitude\_Resolution:* 0.000000

*Geographic\_Coordinate\_Units:* Decimal degrees

*Geodetic\_Model:*

*Horizontal\_Datum\_Name:* North American Datum of 1927

*Ellipsoid\_Name:* Clarke 1866

*Semi-major\_Axis:* 6378206.400000

*Denominator\_of\_Flattening\_Ratio:* 294.978698

---

*Entity\_and\_Attribute\_Information:*

*Detailed\_Description:*

*Entity\_Type:*

*Entity\_Type\_Label:* obri\_nonnps

*Attribute:*

*Attribute\_Label:* FID

*Attribute\_Definition:* Internal feature number.

*Attribute\_Definition\_Source:* ESRI

*Attribute\_Domain\_Values:*

*Unrepresentable\_Domain:*

Sequential unique whole numbers that are automatically generated.

*Attribute:*

*Attribute\_Label:* Shape

*Attribute\_Definition:* Feature geometry.

*Attribute\_Definition\_Source:* ESRI

*Attribute\_Domain\_Values:*

*Unrepresentable\_Domain:* Coordinates defining the features.

*Attribute:*

*Attribute\_Label:* FNODE\_

*Attribute\_Definition:* Name of road if available

*Attribute:*

*Attribute\_Label:* TNODE\_

*Attribute:*

*Attribute\_Label:* LPOLY\_

*Attribute:*

*Attribute\_Label:* RPOLY\_

*Attribute:*

*Attribute\_Label:* LENGTH

*Attribute:*

*Attribute\_Label:* ANJO\_MI\_

*Attribute:*

*Attribute\_Label:* ANJO\_MI\_ID

*Attribute:*

*Attribute\_Label:* ID

*Attribute:*

*Attribute\_Label:* RTE\_NO

*Attribute:*

*Attribute\_Label:* BMP

*Attribute:*

*Attribute\_Label:* EMP

*Attribute:*

*Attribute\_Label:* PCR

*Attribute:*

*Attribute\_Label:* PCR\_RATE

*Attribute:*

*Attribute\_Label:* RT\_LENGTH

*Attribute:*

*Attribute\_Label:* PCRMI  
*Attribute:*  
*Attribute\_Label:* PCR\_RATEMI  
*Attribute:*  
*Attribute\_Label:* PCR\_RATEAV  
*Attribute:*  
*Attribute\_Label:* PCRAV  
*Attribute:*  
*Attribute\_Label:* NAME

---

*Distribution\_Information:*  
*Resource\_Description:* Downloadable Data  
*Standard\_Order\_Process:*  
*Digital\_Form:*  
*Digital\_Transfer\_Information:*  
*Transfer\_Size:* 0.008

---

*Metadata\_Reference\_Information:*  
*Metadata\_Date:* 20050722  
*Metadata\_Contact:*  
*Contact\_Information:*  
*Contact\_Organization\_Primary:*  
*Contact\_Organization:* EFLHD Sterling  
*Contact\_Person:* Dan VanGilder  
*Contact\_Position:* GIS Coordinator  
*Contact\_Address:*  
*Address\_Type:* mailing and physical address  
*Address:* 21400 Ridgetop Circle  
*City:* Sterling  
*State\_or\_Province:* Virginia  
*Postal\_Code:* 20166  
*Country:* United States  
*Contact\_Voice\_Telephone:* 703-404-6361  
*Contact\_Electronic\_Mail\_Address:* dvangilder@fhwa.dot.gov  
*Metadata\_Standard\_Name:* FGDC Content Standards for Digital Geospatial Metadata  
*Metadata\_Standard\_Version:* FGDC-STD-001-1998  
*Metadata\_Time\_Convention:* local time  
*Metadata\_Extensions:*  
*Online\_Linkage:* <<http://www.esri.com/metadata/esriprof80.html>>  
*Profile\_Name:* ESRI Metadata Profile

---

Generated by [mp](#) version 2.7.33 on Fri Jul 22 09:46:00 2005



# obri\_pkg\_03

Metadata also available as

## Metadata:

- [Identification Information](#)
  - [Data Quality Information](#)
  - [Spatial Data Organization Information](#)
  - [Spatial Reference Information](#)
  - [Entity and Attribute Information](#)
  - [Distribution Information](#)
  - [Metadata Reference Information](#)
- 

### *Identification\_Information:*

#### *Citation:*

##### *Citation\_Information:*

*Originator:* Eastern Federal Lands Highway Division

*Publication\_Date:* Unknown

*Title:* obri\_pkg\_03

*Geospatial\_Data\_Presentation\_Form:* vector digital data

*Online\_Linkage:* Not Available

#### *Description:*

*Abstract:* Parking Areas

*Purpose:* Road Inventory Program

#### *Time\_Period\_of\_Content:*

##### *Time\_Period\_Information:*

##### *Single\_Date/Time:*

*Calendar\_Date:* 11/19/2002

*Currentness\_Reference:* ground condition

#### *Status:*

*Progress:* Complete

*Maintenance\_and\_Update\_Frequency:* As per RIP cycle

#### *Spatial\_Domain:*

##### *Bounding\_Coordinates:*

*West\_Bounding\_Coordinate:* -84.716508

*East\_Bounding\_Coordinate:* -84.660209

*North\_Bounding\_Coordinate:* 36.102263

*South\_Bounding\_Coordinate:* 36.068391

#### *Keywords:*

##### *Theme:*

*Theme\_Keyword\_Thesaurus:* OBRI

*Theme\_Keyword:* OBRI

*Access\_Constraints:* None

*Use\_Constraints:* Redistribution needs permission from EFLHD/NPS

#### *Point\_of\_Contact:*

##### *Contact\_Information:*

*Contact\_Person\_Primary:**Contact\_Person:* Dan VanGilder*Contact\_Organization:* EFLHD*Contact\_Position:* GIS Coordinator*Contact\_Address:**Address\_Type:* mailing and physical address*Address:* 21400 Ridgetop Circle*City:* Sterling*State\_or\_Province:* Virginia*Postal\_Code:* 20166*Country:* United States*Contact\_Voice\_Telephone:* 703-404-6361*Contact\_Electronic\_Mail\_Address:* dvangilder@fhwa.dot.gov*Native\_Data\_Set\_Environment:*

Microsoft Windows 2000 Version 5.1 (Build 2600) Service Pack 2; ESRI ArcCatalog  
8.3.0.800

---

*Data\_Quality\_Information:**Attribute\_Accuracy:**Attribute\_Accuracy\_Report:* Good*Completeness\_Report:* Complete for parking areas*Lineage:**Source\_Information:**Type\_of\_Source\_Media:* GPS*Spatial\_Data\_Organization\_Information:**Direct\_Spatial\_Reference\_Method:* Vector*Point\_and\_Vector\_Object\_Information:**SDTS\_Terms\_Description:**SDTS\_Point\_and\_Vector\_Object\_Type:* G-polygon*Point\_and\_Vector\_Object\_Count:* 5*Spatial\_Reference\_Information:**Horizontal\_Coordinate\_System\_Definition:**Geographic:**Latitude\_Resolution:* 0.000000*Longitude\_Resolution:* 0.000000*Geographic\_Coordinate\_Units:* Decimal degrees*Geodetic\_Model:**Horizontal\_Datum\_Name:* North American Datum of 1927*Ellipsoid\_Name:* Clarke 1866*Semi-major\_Axis:* 6378206.400000*Denominator\_of\_Flattening\_Ratio:* 294.978698

*Entity\_and\_Attribute\_Information:**Detailed\_Description:**Entity\_Type:**Entity\_Type\_Label:* obri\_pkg\_03*Attribute:**Attribute\_Label:* FID*Attribute\_Definition:* Internal feature number.*Attribute\_Definition\_Source:* ESRI*Attribute\_Domain\_Values:**Unrepresentable\_Domain:*

Sequential unique whole numbers that are automatically generated.

*Attribute:**Attribute\_Label:* Shape*Attribute\_Definition:* Feature geometry.*Attribute\_Definition\_Source:* ESRI*Attribute\_Domain\_Values:**Unrepresentable\_Domain:* Coordinates defining the features.*Attribute:**Attribute\_Label:* PARK\_ALPHA*Attribute\_Definition:* Park alpha code*Attribute\_Definition\_Source:* Route ID Meeting*Attribute:**Attribute\_Label:* RTE\_NO*Attribute\_Definition:* Route number*Attribute\_Definition\_Source:* Route ID Meeting*Attribute:**Attribute\_Label:* RTE\_NAME*Attribute\_Definition:* Route name*Attribute\_Definition\_Source:* Route ID Meeting*Attribute:**Attribute\_Label:* FEATURE*Attribute:**Attribute\_Label:* SURF\_TYPE*Attribute\_Definition:* Surface type of route*Attribute\_Domain\_Values:**Attribute:**Attribute\_Label:* CONDITION*Attribute\_Definition:* Condition rating for route*Attribute:**Attribute\_Label:* PHOTOS*Attribute\_Definition:* Photo filename associated with feature*Attribute:**Attribute\_Label:* COMMENT*Attribute\_Definition:* Field comment*Attribute:**Attribute\_Label:* GPS\_DATE*Attribute\_Definition:* Date of GPS collection*Attribute:**Attribute\_Label:* DATAFILE*Attribute:**Attribute\_Label:* SQ\_FT

*Attribute\_Definition:* Feature area in square feet

---

*Distribution\_Information:*

*Resource\_Description:* Downloadable Data

*Standard\_Order\_Process:*

*Digital\_Form:*

*Digital\_Transfer\_Information:*

*Transfer\_Size:* 0.018

---

*Metadata\_Reference\_Information:*

*Metadata\_Date:* 20050722

*Metadata\_Contact:*

*Contact\_Information:*

*Contact\_Organization\_Primary:*

*Contact\_Organization:* EFLHD Sterling

*Contact\_Person:* Dan VanGilder

*Contact\_Position:* GIS Coordinator

*Contact\_Address:*

*Address\_Type:* mailing and physical address

*Address:* 21400 Ridgetop Circle

*City:* Sterling

*State\_or\_Province:* Virginia

*Postal\_Code:* 20166

*Country:* United States

*Contact\_Voice\_Telephone:* 703-404-6361

*Contact\_Electronic\_Mail\_Address:* dvangilder@fhwa.dot.gov

*Metadata\_Standard\_Name:* FGDC Content Standards for Digital Geospatial Metadata

*Metadata\_Standard\_Version:* FGDC-STD-001-1998

*Metadata\_Time\_Convention:* local time

*Metadata\_Extensions:*

*Online\_Linkage:* <<http://www.esri.com/metadata/esriprof80.html>>

*Profile\_Name:* ESRI Metadata Profile

---

Generated by [mp](#) version 2.7.33 on Fri Jul 22 09:44:58 2005