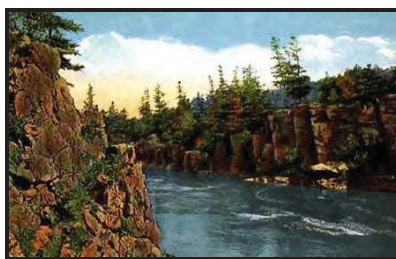




**The Road Inventory
of
Saint Croix/Lower St. Croix National
(Wild/Scenic) River (Way)
SACN – 6590**



national park service



Road Inventory Program

Prepared By:
Federal Highway Administration
Eastern Federal Lands Highway Division
Cycle 3



Saint Croix/Lower St. Croix National (Wild/Scenic) River (Way) in Wisconsin





TABLE OF CONTENTS

<u>SECTION</u>	<u>PAGE</u>
1. INTRODUCTION	1 - 1
2. PARK SUMMARY INFORMATION	
National Park Summaries	2 - 1
Cost to Improve Based on Historical and Estimated Data	2 - 2
Paved Route Miles and Percentages by Functional Class and PCR	2 - 3
3. PARK SUMMARY MAPS	
Route Location Key Map	3 - 1
Route Condition Key Map – PCR Mile by Mile	3 - 4
4. PARK ROUTE INVENTORY	
Route Identification Lists (Numeric and Alphabetic)	4 - 1
5. PAVED ROUTE CONDITION RATING SHEETS	5 - 1
6. MANUALLY RATED PAVED ROUTE CONDITION RATING SHEETS	6 - 1
7. PARKING LOT CONDITION RATING SHEETS	7 - 1
Paved parking Areas	
8. PARKWIDE / ROUTE MAINTENANCE FEATURES SUMMARY	8 - 1
9. PARK ROUTE MAINTENANCE FEATURES ROAD LOG	9 - 1
10. APPENDIX	
A. Glossary of Terms and Abbreviations	10 - 1
B. Description of Rating System	10 - 3
C. Digital Image Information	10 - 7
D. Metadata	10 - 8

INTRODUCTION

Background: In July 1976, the National Park Service (NPS) and the Federal Highway Administration (FHWA) entered into a Memorandum of Agreement (MOA), establishing the Road Inventory Program (RIP). In 1980, the NPS and the FHWA terminated the 1976 MOA and entered into a new MOA that provided for the completion of the initial phase of the RIP. The purpose of the RIP, per the 1980 MOA, was to maintain and update RIP data in order to develop long-range and short-range costs and programs to bring National Park Service (NPS) roads up to, or to maintain, designated standards, and to establish a maintenance management program.

The FHWA's Federal Lands Highway (FLH) was assigned the task of identifying condition deficiencies and corrective priorities along with associated corrective costs, inventorying maintenance features (e.g., culverts, signs, guardrail, etc.), summarizing the data and findings in a report, and providing a photographic record of the road system.

The FLH completed the initial phase of the RIP in the early 1980's. As a result of this effort, each park received a RIP book, also known as the "Brown Book," that included the information collected during this initial RIP phase.

In an effort to maintain and update the RIP data, a cyclical data collection and reporting process was re-established in the 1990's. The FLH completed two cycles of RIP data collection between 1994 and 2001. Cycle 1 data was collected in 44 large parks from 1994 to 1995. This data was found to be unusable for comparison to future cycles. Cycle 2 data was collected from March 1997 to January 2001 in 79 large parks and 5 small parks containing 4,874 route miles. Each park received a copy of a Cycle 2 RIP Report, also known as the "Blue Book."

Since 1984, the RIP Program has been funded through the Federal Lands Highway Program's Park Roads and Parkways (PRP) Program. Currently, the NPS Washington Headquarters' Park Facility Management Division is responsible for coordinating the RIP program with the FLH. The FLH Washington office coordinates policy and prepares national reports and needs assessment studies for Congress.

In 1998, the Transportation Equity Act for the 21st Century (TEA-21) amended Title 23 U.S.C., and inserted Section 204(a)(6) which requires the Federal Highway Administration and the National Park Service, to develop, by rule, a Pavement Management System (PMS) for the park roads and parkways serving the National Park System. As a result of the requirements in TEA-21, the NPS and the FHWA are in the process of developing a PMS. The PMS will assist the decision-makers in effectively spending limited PRP Program funds. The PMS will provide information for planning and programming road maintenance, rehabilitation, and reconstruction activities. RIP data will provide the basic information for this system.

Key information included in the RIP is the mileage inventory and condition assessments accomplished by the RIP Program. The mileage and condition data are used in the current allocation formula of PRP Program funds.

RIP Cycle 3: A third RIP cycle was initiated in 2001. Data was collected from March 2001 to July 2004, and is included in the Cycle 3 Reports. Cycle 3 includes 254 large and small parks with a combined total of 5,455 route miles.

In the Cycle 3 Reports, a general condition rating of excellent, good, fair and poor is ascribed to each one-mile section of paved roadway, and to each paved parking area. This condition rating system provides a realistic means of assessing the general funding needs for road improvements. Along with these descriptive condition ratings, a numerical rating between 0 and 100 is ascribed to each mile of road and to each parking area.. This numerical rating is called a Pavement Condition Rating (PCR). The PCR rating system is described in Section 10 of this report.

All of the fieldwork required for obtaining inventory, condition, and maintenance feature information is coordinated with each park and the regional offices to ensure that the information in the RIP reports is accurate.

The FLH is responsible for all of the data presented in this report. Anyone having questions or comments regarding the contents of this report is encouraged to contact the FHWA RIP Coordinator. It is our aim to provide exceptional customer satisfaction in our delivery of the RIP program.

FHWA RIP Coordinator:

James A. Amenta
FHWA/EFLHD
Technical Services, HTS-15
21400 Ridgetop Circle
Sterling, VA 20166
(703) 404-6366

Saint Croix/Lower St. Croix National (Wild/Scenic) River (Way) Summaries

Overall Park Mileage Summary

PARK TOTAL SUMMARY ITEMS	TOTAL	DATE
Paved ARAN Driven Route Miles	0.68	6/26/2003
Unpaved Estimated Route Miles	2.95	6/26/2003
Paved ARAN and Unpaved Route Miles	3.63	
Paved ARAN Driven Lane Miles	1.04	6/26/2003
Paved MRR Lane Miles	0.00	
Parking Lot Lane Miles	5.27	6/26/2003
Total Paved Lane Miles	6.31	

Notes: Total Paved Lane Miles includes the sum of Paved ARAN Driven Lane Miles, Paved MRR Lane Miles, and Parking Lot Lane Miles

Unpaved Route Miles are estimates, they have not been inventoried by the Roadway Inventory Program (RIP)

Saint Croix/Lower St. Croix National (Wild/Scenic) River (Way) Summaries

Cost to Improve to "Excellent" Condition

SOURCE	WORK PERFORMED	COST PER MILE	INITIAL CONDITION
FHWA Awarded Projects	Surface Maintenance	\$30,000	Excellent
FHWA Awarded Projects	3-R (Resurfacing)	\$110,000	Good
FHWA Awarded Projects	3-R (Resurfacing, Restoration, and Rehabilitation) Projects	\$560,000	Fair
FHWA Awarded Projects	4-R (Resurfacing, Restoration, Rehabilitation, and Reconstruction) Projects	\$1,540,000	Poor

Based on the above table, the cost to improve ARAN driven paved road condition miles to "Excellent" PCR are:

Existing Condition	Existing Miles	Estimated Cost to Improve
Excellent	0.12	\$3,600
Good	0.14	\$15,400
Fair	0.22	\$123,200
Poor	0.20	\$308,000
Totals	0.68	\$450,200

The above numbers include the 35% PE, CE and contingency costs and are national averages. The cost estimates were used in the calculations for the 2004 Reauthorization Bill to determine the level of funding required to bring all the NPS roads into a Pavement Condition Rating (PCR) of Good (85).

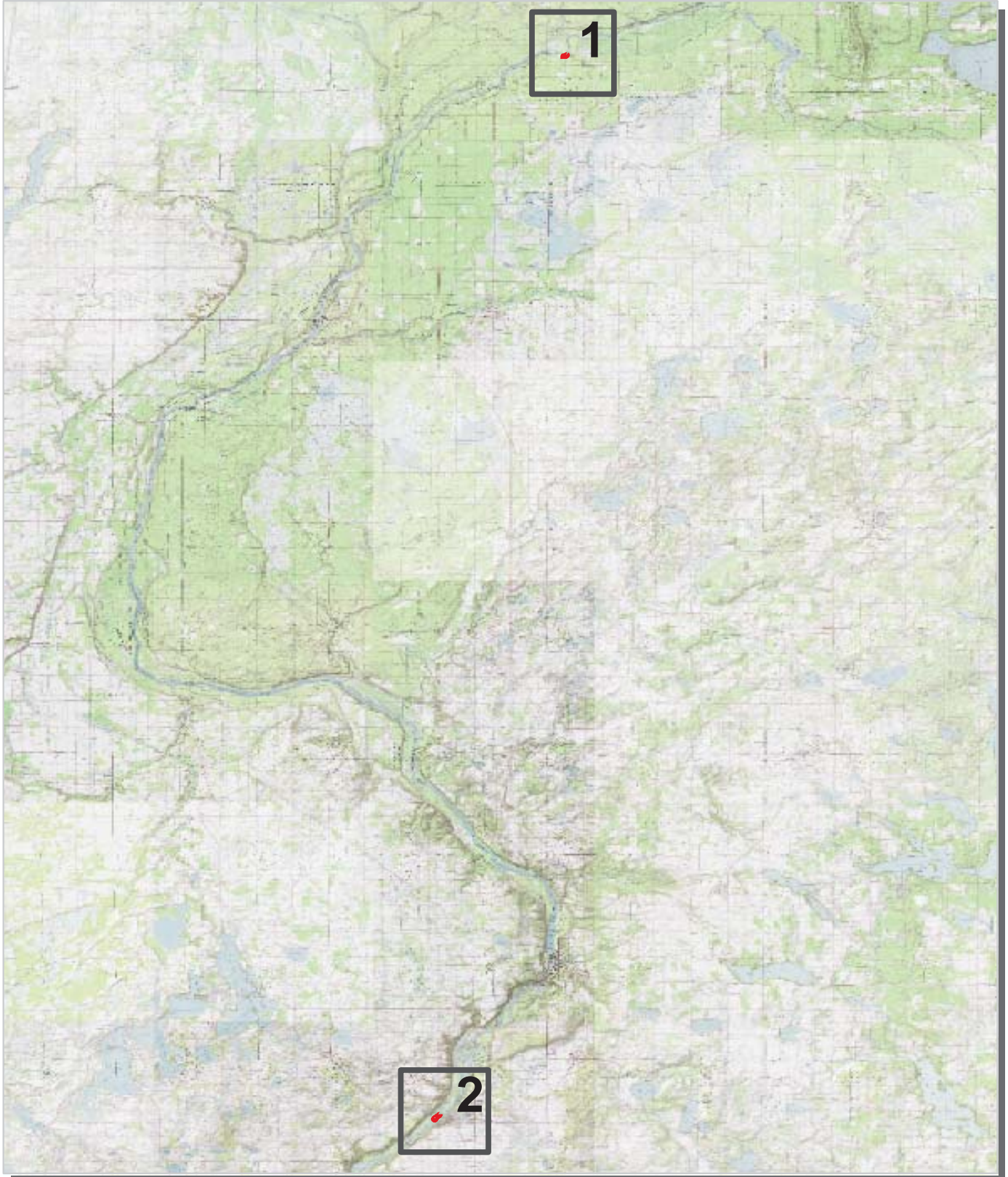
These numbers are for preliminary planning purposes only and should not be used for project level proposals. For park planning level analysis, apply your park multiplier for more accurate regional costs.

Saint Croix/Lower St. Croix National (Wild/Scenic) River (Way) Summaries

**Paved Route Miles and Percentages by Functional Class and PCR
for ARAN Driven Paved Roads**

F.C.	Pavement Condition Rating								TOTAL MILES
	Poor (<=60)		Fair (61-84)		Good (85-94)		Excellent (95-100)		
	MILES	%	MILES	%	MILES	%	MILES	%	
1									
2	0.20	29.41%	0.08	11.76%					0.28
3			0.14	20.59%	0.14	20.59%	0.12	17.65%	0.40
4									
5									
6									
7									
8									
Totals	0.20	29.41%	0.22	32.35%	0.14	20.59%	0.12	17.65%	0.68

Saint Croix/Lower St. Croix National (Wild/Scenic) River (Way) Route Location Key Map



 Park Owned Routes



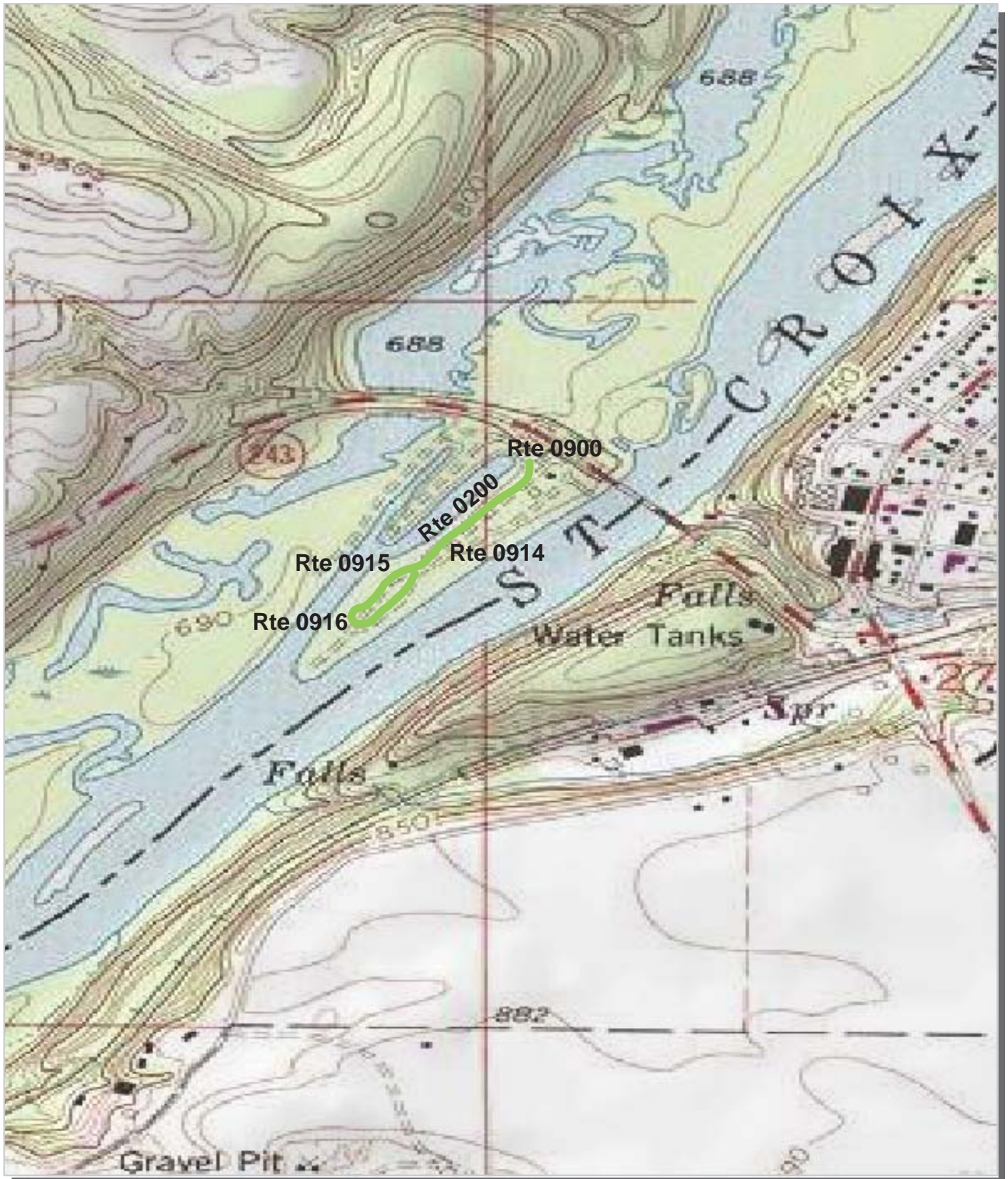
Saint Croix/Lower St. Croix National (Wild/Scenic) River (Way) Route Location Area Map 1



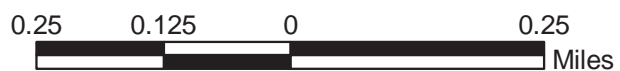
Unique colors used to differentiate routes



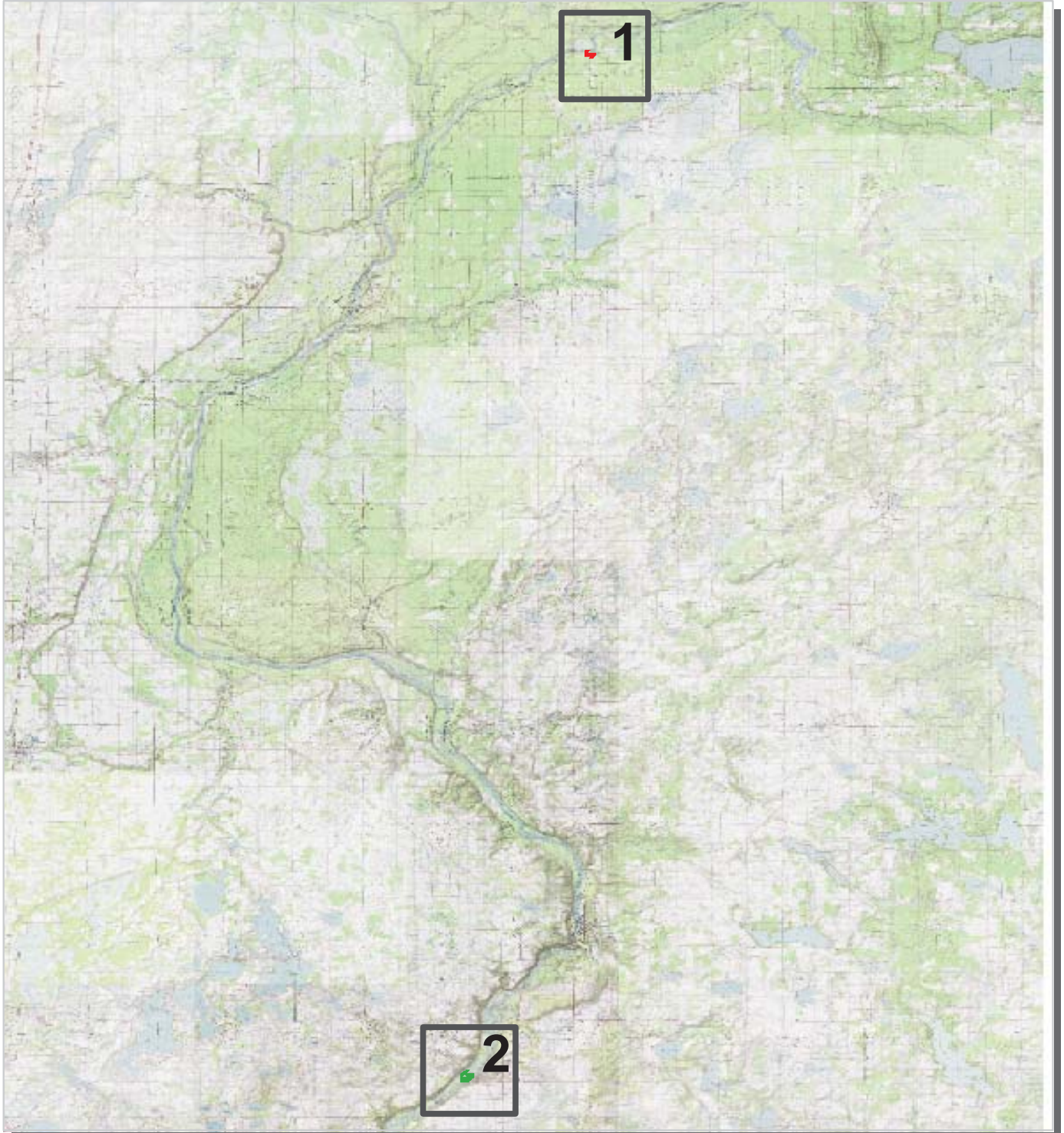
Saint Croix/Lower St. Croix National (Wild/Scenic) River (Way) Route Location Area Map 2



Unique colors used to differentiate routes



Saint Croix/Lower St. Croix National (Wild/Scenic) River (Way) Route Condition Key Map PCR - Mile by Mile



PCR	Poor		Fair		Good		Excellent	
	(<=60)		(61 - 84)		(85 - 94)		(95 - 100)	

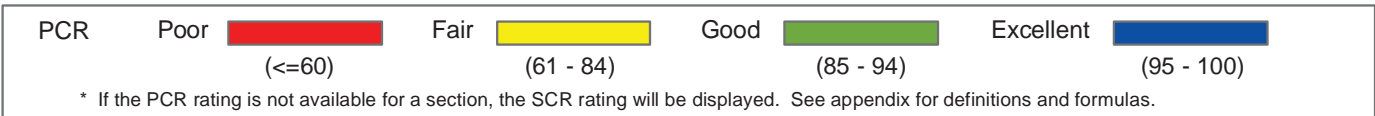
* If the PCR rating is not available for a section, the SCR rating will be displayed. See appendix for definitions and formulas.



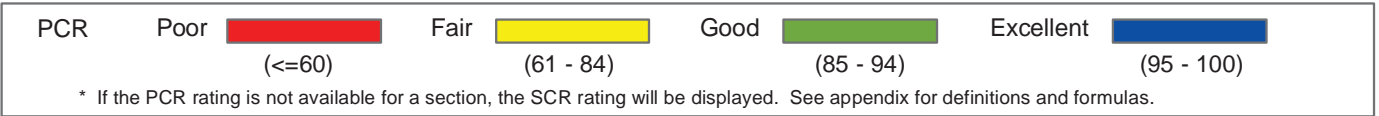
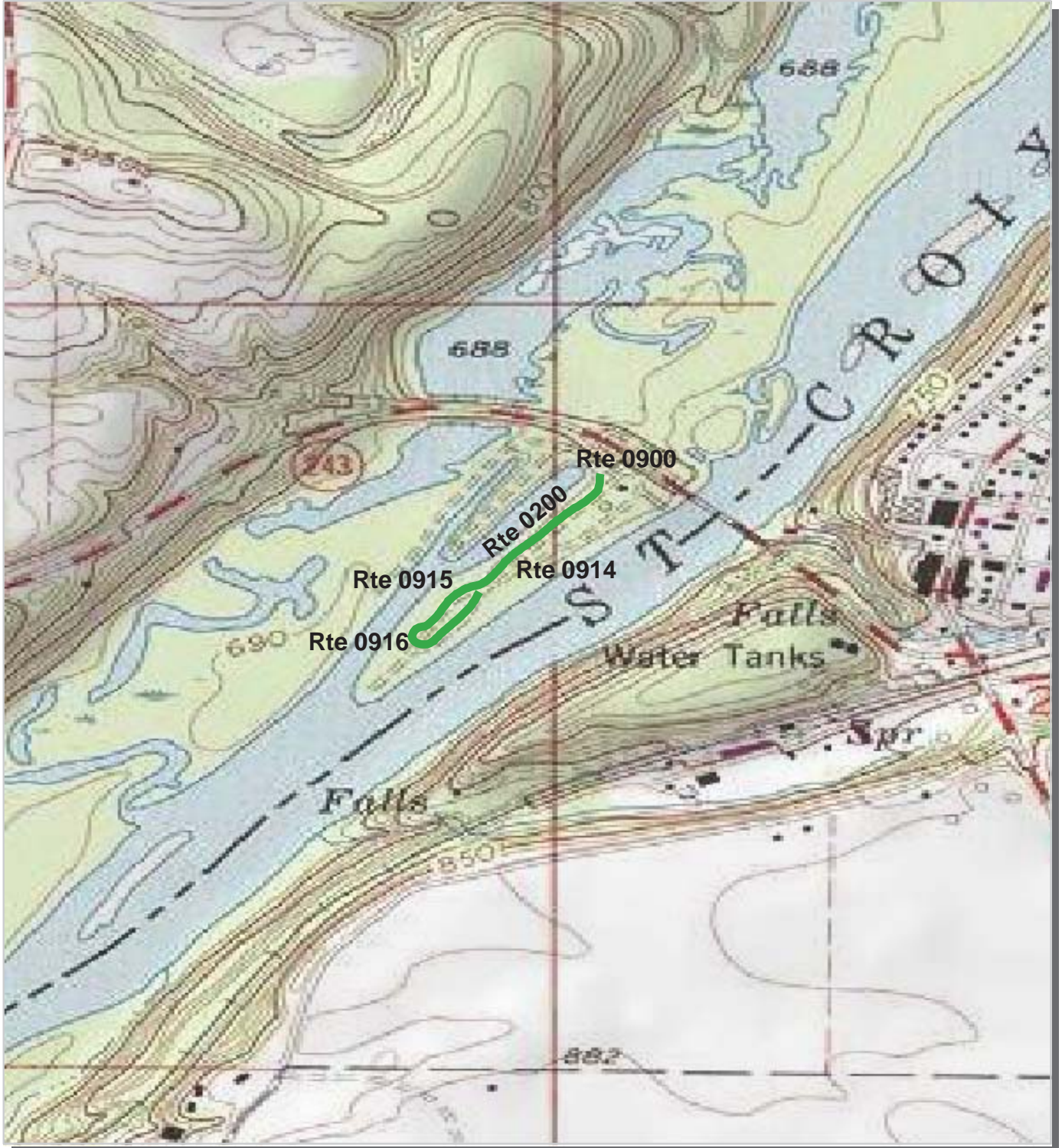
Saint Croix/Lower St. Croix National (Wild/Scenic) River (Way)

Route Condition Area Map 1

PCR - Mile by Mile



Saint Croix/Lower St. Croix National (Wild/Scenic) River (Way) Route Condition Area Map 2 PCR - Mile by Mile



NPS/RIP Route ID Report

(Numerical By Route #)

Shading Color Key:

Red text denotes approx. mileage

White = Paved Routes, ARAN Driven	Yellow = Unpaved Routes, ARAN not Driven	Blue = All Paved Parking Areas
Grey = Paved Routes, ARAN not Driven	Red =	Green = All Unpaved Parking Areas
Black = Paved State, Local or Private non-NPS Routes, ARAN Driven	Purple =	

SACN

Saint Croix/Lower St. Croix National (Wild/Scenic) River (Way)

Rte. #	FMSS Asset #	Route Name	Route Description		Paved Miles	Un-Paved Miles	Rte. Lgth	Func. Class	Rte. Lanes	Manual Rated SQ/FT	Surf. Type
			From	To							
0100		NORWAY POINT ROAD	FROM PARK BOUNDARY	TO END OF LOOP	0.28	0.00	0.28	2	1,2	0	OC
0200	24194	OSCEOLA ROAD	FROM ROUTE 0900	TO END OF LOOP	0.40	0.00	0.40	3	1,2	0	AS
0202		NAMEKAGON CANOE LANDING TURNAROUND	FROM ROUTE 0913	TO END OF LOOP	0.00	0.10	0.10	3	1,2	0	GR
0400		GLENBRAE ROAD	FROM RIVER ROAD	TO SAINT CROIX RIVER	0.00	0.62	0.62	6	1	0	OT
0401		MATRIOUS LANDING	FROM COUNTY ROAD	TO SAINT CROIX RIVER	0.00	0.31	0.31	6	1	0	OT
0700	24104	RO-MD MARSHLAND Maintenace ROAD	FROM	TO	0.00	0.10	0.10	ZZ		0	GR
0701	24167	RO-LD EAGLES NEST ACCESS ROAD	FROM	TO	0.00	0.21	0.21	ZZ		0	GR
0702	24258	RO-LD MAGNEY LANDING ROAD	FROM	TO	0.00	0.57	0.57	ZZ		0	GR
0703	24306	RO-LD SOMERSET ROAD	FROM	TO	0.00	0.04	0.04	ZZ		0	GR
0704	24777	RO-ND STINNETT LANDING ROAD	FROM	TO	0.00	0.40	0.40	ZZ		0	GR
0705	24784	RO-ND GROAT LANDING ROAD	FROM	TO	0.00	0.10	0.10	ZZ		0	GR
0706	24808	RO-ND EARL PARK LANDING ROAD	FROM	TO	0.00	0.20	0.20	ZZ		0	GR
0707	24853	RO-ND WHISPERING PINES LANDING ROAD	FROM	TO	0.00	0.10	0.10	ZZ		0	GR
0708	24870	RO-ND FRITZ LANDING ROAD	FROM	TO	0.00	0.20	0.20	ZZ		0	GR
0900		OSCEOLA LANDING	FROM STATE HIGHWAY 243	TO PARKING	0.00	0.00	0.00	9		52,859	AS
0901		LOWER HEADQUARTERS PARKING	FROM HAMILTON STREET	TO PARKING	0.00	0.00	0.00	9		9,737	AS
0902		UPPER HEADQUARTERS PARKING	FROM HAMILTON STREET	TO MASSACHUSETTS STREET	0.00	0.00	0.00	9		24,599	AS
0903	23878	HIGHWAY 70 WAYSIDE	FROM STATE HIGHWAY 70	TO PARKING	0.00	0.00	0.00	9		35,881	AS
0904	24085	MARSHLAND VISITOR CENTER PARKING	FROM STATE HIGHWAY 70	TO PARKING	0.00	0.00	0.00	9		23,789	AS
0905A		SODERBECK LANDING	FROM FERRY ROAD	TO BOAT LAUNCH	0.00	0.00	0.00	9		5,495	AS
0905B		SODERBECK LANDING	FROM FERRY ROAD	TO BOAT LAUNCH	0.00	0.00	0.00	9		5,000	GR
0906A		NELSON'S LANDING	FROM NELSON'S LANDING ROAD	TO PARKING	0.00	0.00	0.00	9		10,122	OC
0906B		NELSON'S LANDING	FROM NELSON'S LANDING ROAD	TO PARKING	0.00	0.00	0.00	9		3,000	GR
0907		NORWAY POINT LANDING	FROM ROUTE 0100	TO BOAT LAUNCH	0.00	0.00	0.00	9		2,513	OC
0908	37388	THAYER'S LANDING	FROM STATE HIGHWAY 48/77	TO PARKING	0.00	0.00	0.00	9		10,888	AS
0909	54633	RIVERSIDE LANDING	FROM STATE HIGHWAY 25	TO PARKING	0.00	0.00	0.00	9		12,874	GR
0910		HIGHWAY 35 WAYSIDE	FROM STATE HIGHWAY 35	TO PARKING	0.00	0.00	0.00	9		54,238	OC
0911		TREGO LAKE SKI TRAIL PARKING	FROM RIVER ROAD	TO RIVER ROAD	0.00	0.00	0.00	9		8,880	OC
0912	24816	NAMEKAGON VISITOR CENTER PARKING	FROM STATE HIGHWAY 63	TO PARKING	0.00	0.00	0.00	9		28,594	AS

NPS/RIP Route ID Report

(Numerical By Route #)

Shading Color Key:
Red text denotes approx. mileage

White = Paved Routes, ARAN Driven	Yellow = Unpaved Routes, ARAN not Driven	Blue = All Paved Parking Areas
Grey = Paved Routes, ARAN not Driven	Red =	Green = All Unpaved Parking Areas
Black = Paved State, Local or Private non-NPS Routes, ARAN Driven	Purple =	

SACN

Saint Croix/Lower St. Croix National (Wild/Scenic) River (Way)

Rte. #	FMSS Asset #	Route Name	Route Description		Paved Miles	Un-Paved Miles	Rte. Lgth	Func. Class	Rte. Lanes	Manual Rated SQ/FT	Surf. Type
			From	To							
0913		NAMEKAGON CANOE LANDING	FROM DAM ROAD (FOREST ROAD 211)	TO PARKING	0.00	0.00	0.00	9		12,165	AS
0914		OSCEOLA SHELTER 1 PARKING	FROM ROUTE 0200	TO ROUTE 0200	0.00	0.00	0.00	9		12,410	AS
0915		OSCEOLA BEACH PARKING	FROM ROUTE 0200	TO ROUTE 0200	0.00	0.00	0.00	9		9,019	AS
0916		OSCEOLA SHELTER 2 PARKING	FROM ROUTE 0200	TO PARKING	0.00	0.00	0.00	9		4,673	AS
0917A		OSCEOLA LANDING OVERFLOW PARKING A	FROM ROUTE 0900	TO PARKING	0.00	0.00	0.00	9		15,000	OT
0917B		OSCEOLA LANDING OVERFLOW PARKING B	FROM ROUTE 0200	TO PARKING	0.00	0.00	0.00	9		10,000	OT
0918		NAMEKAGON MAINTENANCE YARD	FROM ROUTE 0912	TO MAINTENANCE YARD	0.00	0.00	0.00	9		30,000	GR
0919		SOMERSET LANDING	FROM MARINE ROAD	TO PARKING	0.00	0.00	0.00	9		28,875	OT
0920		NEVERS LANDING	FROM RIVER ROAD	TO PARKING	0.00	0.00	0.00	9		24,800	OT
0921		COUNTY O LANDING	FROM COUNTY O ROAD	TO PARKING	0.00	0.00	0.00	9		500	OT
0922		RUSH CITY LANDING	FROM COUNTY ROUTE 5	TO PARKING	0.00	0.00	0.00	9		100	OT
0923		OLD R.R. BRIDGE LANDING	FROM COUNTY ROUTE 5	TO PARKING	0.00	0.00	0.00	9		2,500	OT
0924		STEVENS CREEK LANDING	FROM COUNTY ROUTE 3	TO PARKING	0.00	0.00	0.00	9		1,800	OT
0925		SNAKE RIVER LANDING	FROM COUNTY ROUTE 8	TO PARKING	0.00	0.00	0.00	9		5,000	OT
0926	58032	COUNTY T LANDING	FROM COUNTY T ROAD	TO PARKING	0.00	0.00	0.00	9		6,000	OT
0927		NAMEKAGON TRAIL LANDING	FROM NAMEKAGON TRAIL ROAD	TO PARKING	0.00	0.00	0.00	9		7,200	OT
0928		MCDOWELL LANDING	FROM COUNTY ROAD 8A	TO PARKING	0.00	0.00	0.00	9		6,800	OT
0929		FRITZ LANDING	FROM PARK BOUNDARY	TO PARKING	0.00	0.00	0.00	9		6,400	OT
0930		WEST HOWELL CAMPGROUND PARKING AREA	FROM COUNTY E ROAD	TO PARKING	0.00	0.00	0.00	9		6,400	OT
0931		WHISPERING PINES LANDING	FROM COUNTY F ROAD	TO PARKING	0.00	0.00	0.00	9		6,800	OT
0932		COUNTY K LANDING	FROM COUNTY K ROAD	TO PARKING	0.00	0.00	0.00	9		9,600	OT
0933		EARL PARK	FROM NORTH ROAD	TO PARKING	0.00	0.00	0.00	9		24,000	OT
0934		SPRINGBROOK LANDING	FROM LEGION LANE	TO PARKING	0.00	0.00	0.00	9		8,200	OT
0935		GROAT LANDING	FROM BRICKMAN LAKE ROAD	TO PARKING	0.00	0.00	0.00	9		2,400	OT
0936		STINNETT LANDING	FROM STINNETT LANOINE ROAD	TO PARKING	0.00	0.00	0.00	9		4,800	OT
0937		PHILLIPI LANDING	FROM RANDYSEK ROAD	TO PARKING	0.00	0.00	0.00	9		5,000	OT
0938		CAP CREEK LANDING	FROM TELEMAR ROAD	TO PARKING	0.00	0.00	0.00	9		2,000	OT
0939		COUNTY M LANDING	FROM COUNTY M ROAD	TO PARKING	0.00	0.00	0.00	9		3,200	OT
0940		EAGLES NEST	FROM STATE HIGHWAY 95	TO PARKING	0.00	0.00	0.00	9		39,000	OT
Totals:					0.68	2.95	3.63			583,111	

NPS/RIP Route ID Report

(Numerical By Route #)

Shading Color Key:

Red text denotes approx. mileage

White = Paved Routes, ARAN Driven	Yellow = Unpaved Routes, ARAN not Driven	Blue = All Paved Parking Areas
Grey = Paved Routes, ARAN not Driven	Red =	Green = All Unpaved Parking Areas
Black = Paved State, Local or Private non-NPS Routes, ARAN Driven	Purple =	

General Park Road Functional Classification Table

- Class 1 Principal Park Road/Rural Parkway (Public Roads) - Roads which constitute the main access route, circulatory tour, or thoroughfare for park visitors. Route Numbers 1 - 99. Note: Rural parkways (e.g. Natchez Trace) are numbered 1 - 9. State Routes Inventoried for Park. Route Numbers 5000-5999
- Class 2 Connector Park Road (Public Roads) - Roads which provide access within a park to areas of scenic, scientific, recreational or cultural interest, such as overlooks, campgrounds, etc. Route Numbers 100-199.
- Class 3 Special Purpose Park Road (Public Roads) - Roads which provide circulation within public areas, such as campgrounds, picnic areas, visitor center complexes, concessionaire facilities, etc. These roads generally serve low-speed traffic and are often designed for one-way circulation. Route Numbers 200-299.
- Class 4 Primitive Park Roads (Public Roads) - Roads which provide circulation through remote areas and/or access to primitive campgrounds and undeveloped areas. These roads frequently have no minimum design standards and their use may be limited to specially equipped vehicles. Route Numbers 200-299.
Note: Functional Classes 3 and 4 have the same route numbers because, historically, they were numbered similarly.
- Class 5 Administrative Access Road (Administrative Roads) - All public roads intended for access to administrative developments or structures such as park offices, employee quarters, or utility areas. Route Numbers 400-499.
- Class 6 Restricted Road (Administrative Roads) - All roads normally closed to the public, including patrol roads, truck trails, and other similar roads. Route Numbers 400-499.
Note: Functional Classes 5 and 6 have the same route numbers because historically they were numbered similarly and often there is little distinction between these routes. For example, because utility areas and employee housing are often closed to the public, this restriction would result in classification of FC 6 rather than FC 5.
- Class 7 Urban Parkway (Urban Parkways and City Streets) - These facilities serve high volumes of park and non-park related traffic and are restricted, limited-access facilities in an urban area. This category of roads primarily encompasses the major parkways which serve as gateways to our nation's capital. Other major park roads or portions thereof, however, may be included in this category. Route Numbers 1-9.
- Class 8 City Streets (Urban Parkways and City Streets) - City streets are usually extensions of the adjoining street system that are owned and maintained by the National Park Service. The construction and/or reconstruction should conform with accepted local engineering practice and local conditions. Route Numbers 600-699.
- Class 9 Boat Ramp - (Public and Administrative) Route Numbers 800-899.
Parking Area - (Public and Administrative) Route Numbers 900-1999.

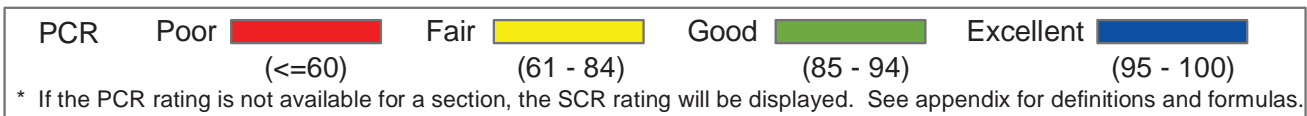
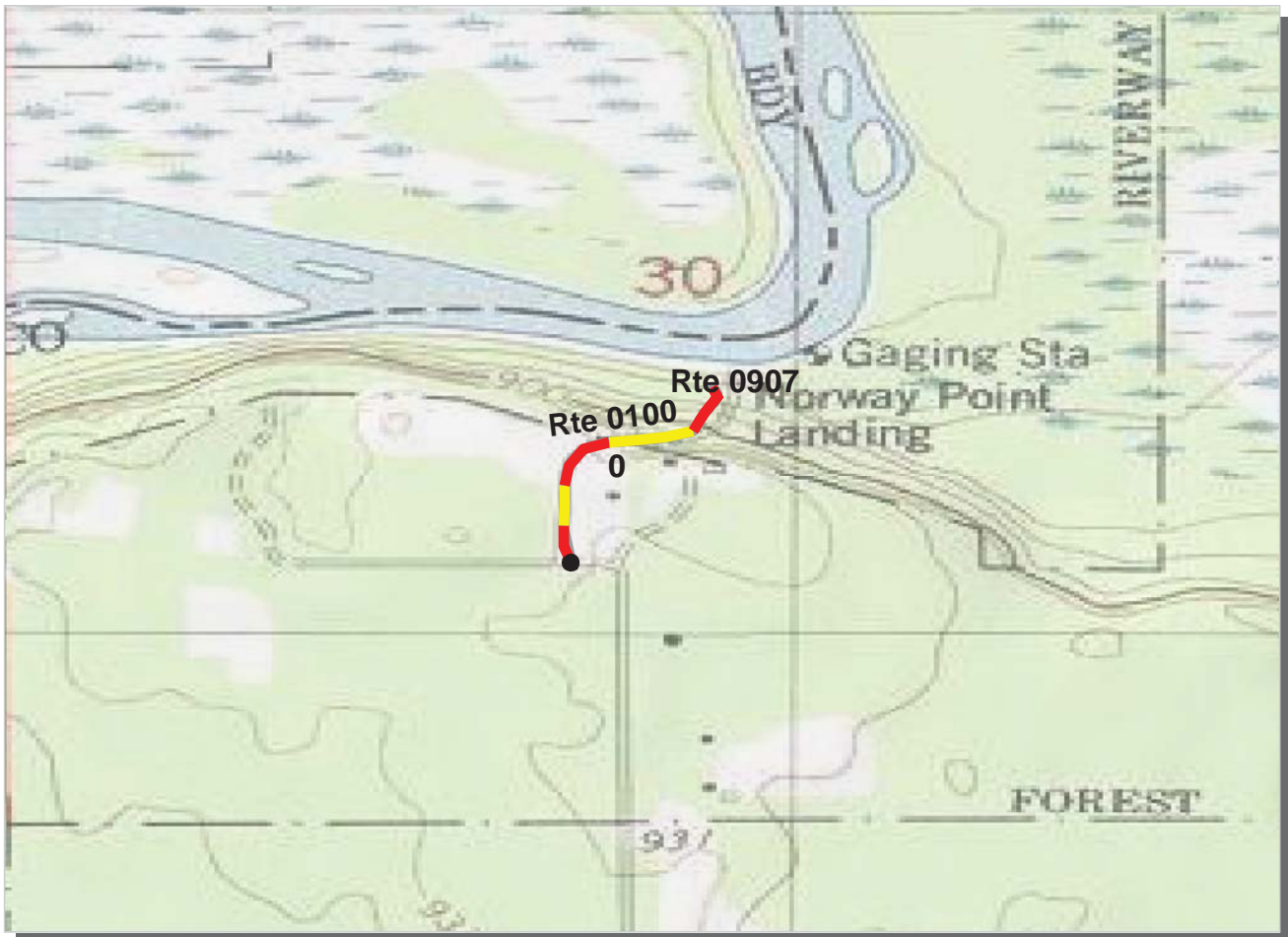
Surface Type Abbreviations:

- AS - Asphaltic Concrete Pavement
- CO - Portland Cement Concrete Pavement
- NC - New Chip Seal Pavement (Under 5 Years)
- OC - Old Chip Seal Pavement (5 Years and Greater)
- SS - Slurry Seal Pavement
- GR - Gravel Road Bed
- BR - Brick or Pavers Road Bed
- CB - Cobble Stone Road Bed
- SA - Sand Road Bed
- DT - Dirt or Native Material Road Bed
- OT - Other Materials Road Bed

A park road system contains those roads within or giving access to a park or other unit of the NPS which are administered by the NPS, or by the Service in cooperation with other agencies. The assignment of a functional classification (FC) to a park road is not based on traffic volumes or design speed, but on the intended use or function of that road or route.

The historic route numbering system also included a 300 number series for interpretive roads, and a 500 series for one-way roads. There are approximately 250 roads nationwide which are designated by the 300 and 500 series. The numbers for these roads will be maintained for reporting consistency. However, since these interpretive and one-way routes are not as clearly tied to a specific functional class, the 300 and 500 series will be discontinued for future use.

ZZ Functional Class Routes were added from FMSS Database. Final Route Number and Functional Class will be established during Park visit for Cycle 4 data collection.



Midwest Region

SACN : Saint Croix/Lower St. Croix National (Wild/Scenic) River (Way)

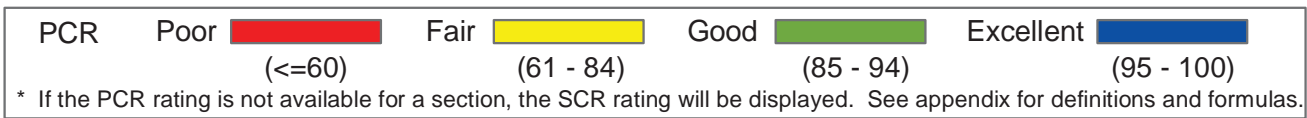
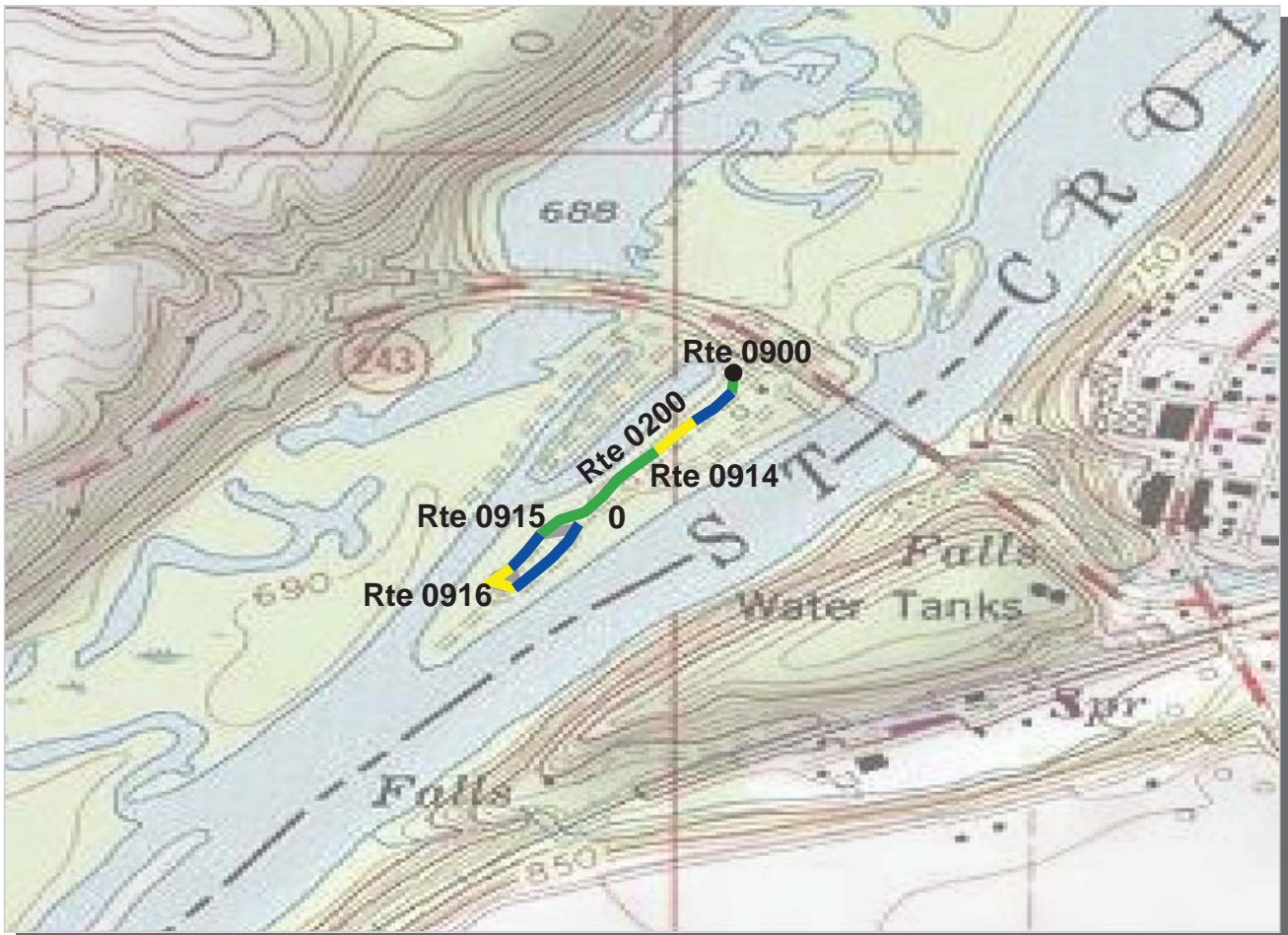
ROUTE: 0100 Norway Point Road

TOTAL LENGTH: 0.28 Miles

Section Number	0				
Section Length (mi)	0.28				
AADT	**				
SADT	**				
ADT Date	**				
Cross Section Information					
Number of Lanes	2				
Paved Width (ft)	17				
Lane Width (ft)	9				
Shoulder Width (ft)	11				
Roadway Condition Information					
PCR (Pavement Condition Rating)	45				
RCI (Roughness Condition Index)	46				
SCR (Surface Condition Rating)	48				
Alligator Cracking Index	89				
Rutting Index	59				
Patching Index	100				
Transverse Cracking Index	97				
Longitudinal Cracking Index	99				
Shoulder Condition Rating	GOOD				
Drainage Condition Rating	GOOD				

ROUTE: 0100 Norway Point Road

* NC designates data not collected NA designates not applicable
 ** See website for traffic data: <http://www.efl.fhwa.dot.gov/nps/index.htm>



Midwest Region

SACN : Saint Croix/Lower St. Croix National (Wild/Scenic) River (Way)

ROUTE: 0200 Osceola Road

TOTAL LENGTH: 0.40 Miles

Section Number	0				
Section Length (mi)	0.40				
AADT	**				
SADT	**				
ADT Date	**				
Cross Section Information					
Number of Lanes	2				
Paved Width (ft)	20				
Lane Width (ft)	11				
Shoulder Width (ft)	0				
Roadway Condition Information					
PCR (Pavement Condition Rating)	86				
RCI (Roughness Condition Index)	83				
SCR (Surface Condition Rating)	87				
Alligator Cracking Index	100				
Rutting Index	90				
Patching Index	100				
Transverse Cracking Index	97				
Longitudinal Cracking Index	99				
Shoulder Condition Rating	N/A				
Drainage Condition Rating	GOOD				

ROUTE: 0200 Osceola Road

* NC designates data not collected NA designates not applicable

** See website for traffic data: <http://www.efl.fhwa.dot.gov/nps/index.htm>

SACN: Manually Rated Paved Route Condition Rating Sheets

No data available for this section

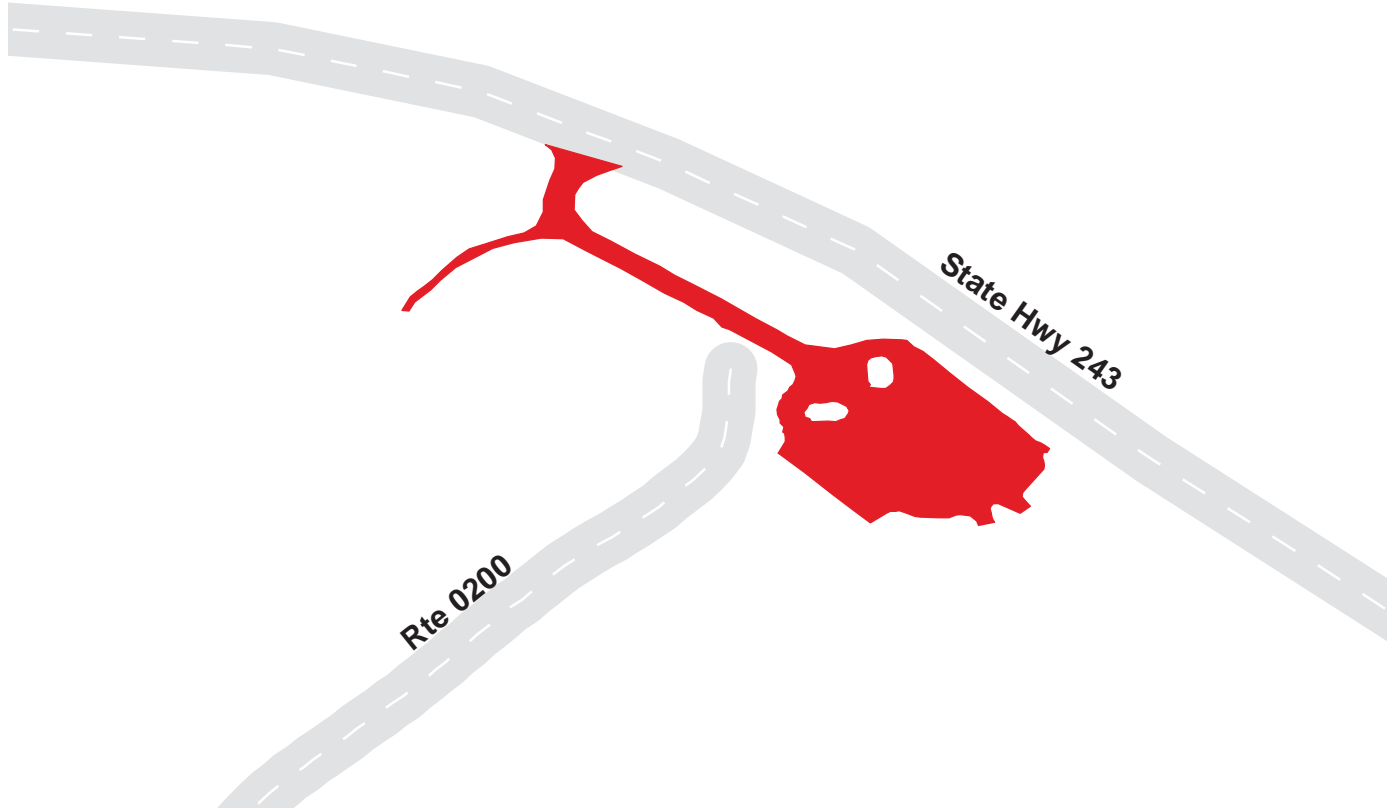
Saint Croix/Lower St. Croix National (Wild/Scenic) River (Way)

Route 0900

OSCEOLA LANDING
FROM STATE HIGHWAY 243

Route	Public / NonPublic	Date Visited	Area (sq ft)	Lane Miles *	Surface Type	Condition / PCR
0900	Public	6/26/2003	52859	0.91	AS	FAIR / 73

* Lane miles are based on 11' lane widths



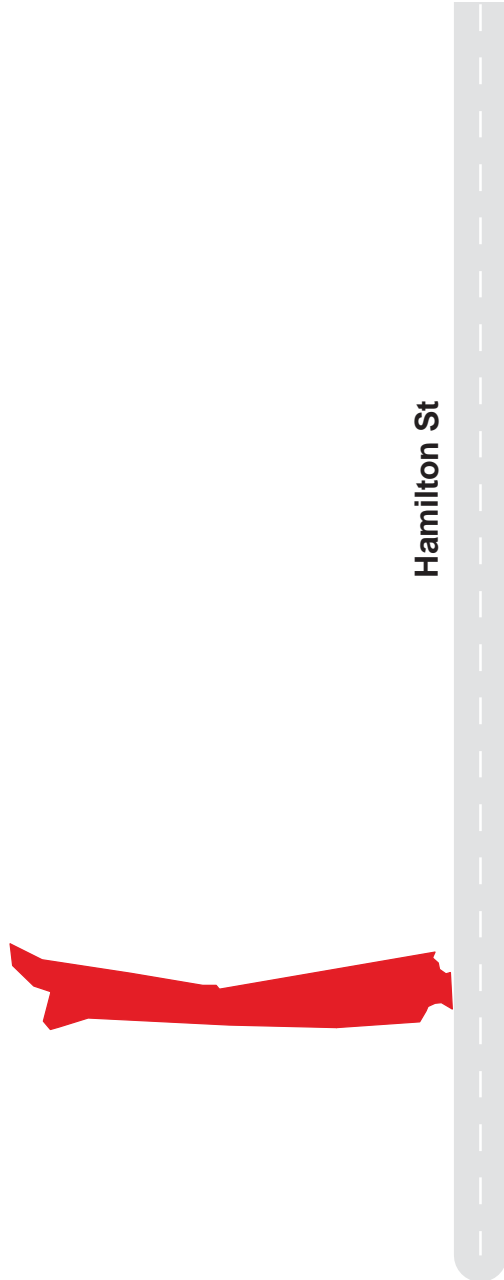
Saint Croix/Lower St. Croix National (Wild/Scenic) River (Way)

Route 0901

LOWER HEADQUARTERS PARKING
FROM HAMILTON STREET

Route	Public / NonPublic	Date Visited	Area (sq ft)	Lane Miles *	Surface Type	Condition / PCR
0901	Public	6/26/2003	9737	0.17	AS	FAIR / 73

* Lane miles are based on 11' lane widths



Saint Croix/Lower St. Croix National (Wild/Scenic) River (Way)

Route 0902

UPPER HEADQUARTERS PARKING
FROM HAMILTON STREET

Route	Public / NonPublic	Date Visited	Area (sq ft)	Lane Miles *	Surface Type	Condition / PCR
0902	Public	6/26/2003	24599	0.42	AS	FAIR / 73

* Lane miles are based on 11' lane widths

Hamilton St



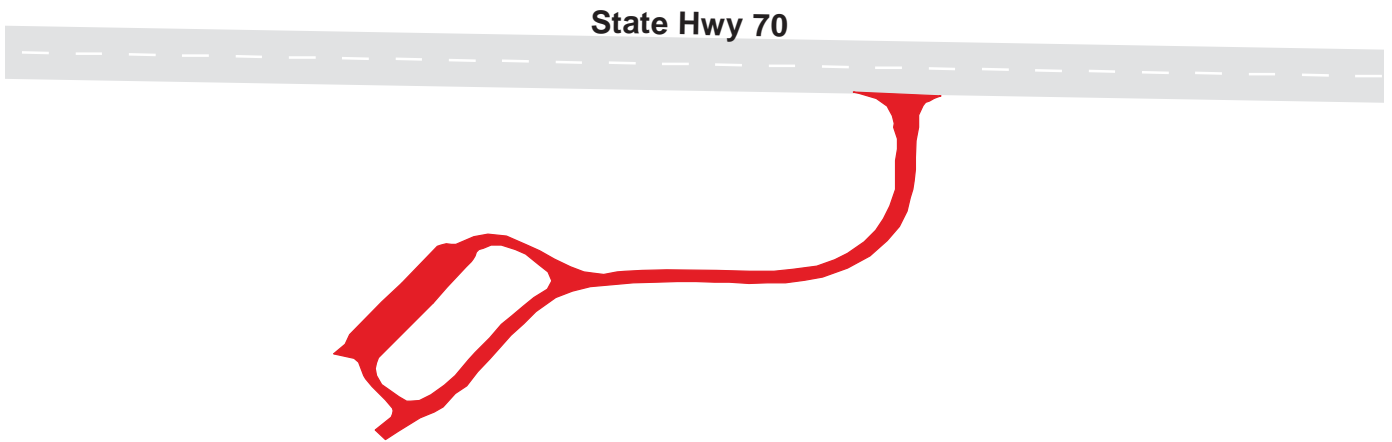
Saint Croix/Lower St. Croix National (Wild/Scenic) River (Way)

Route 0903

HIGHWAY 70 WAYSIDE
FROM STATE HIGHWAY 70

Route	Public / NonPublic	Date Visited	Area (sq ft)	Lane Miles *	Surface Type	Condition / PCR
0903	Public	6/26/2003	35881	0.62	AS	FAIR / 73

* Lane miles are based on 11' lane widths



Saint Croix/Lower St. Croix National (Wild/Scenic) River (Way)

Route 0904

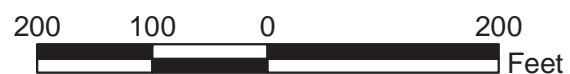
MARSHLAND VISITOR CENTER PARKING
FROM STATE HIGHWAY 70

Route	Public / NonPublic	Date Visited	Area (sq ft)	Lane Miles *	Surface Type	Condition / PCR
0904	Public	6/26/2003	23789	0.41	AS	FAIR / 73

* Lane miles are based on 11' lane widths



State Hwy 70



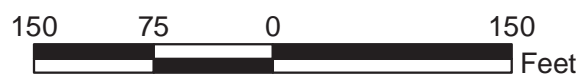
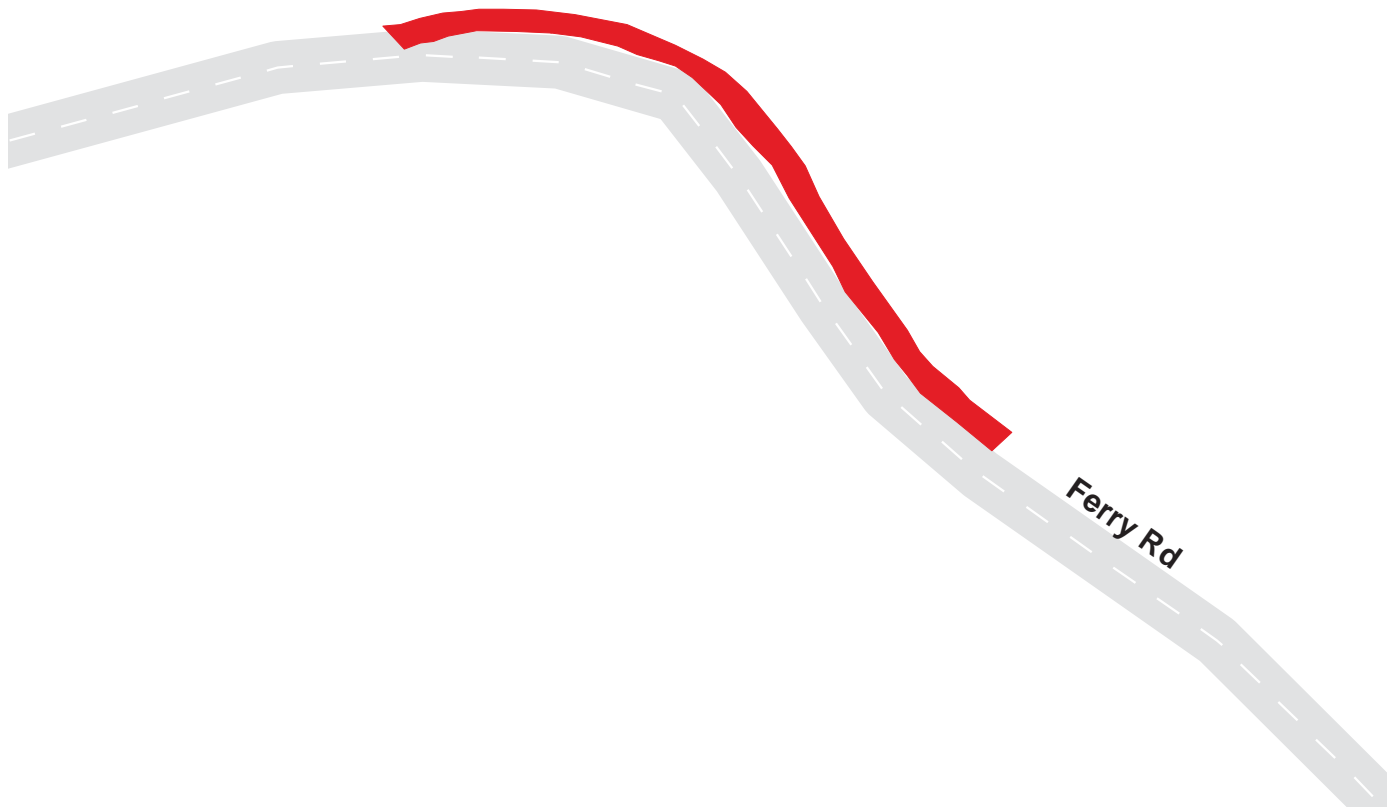
Saint Croix/Lower St. Croix National (Wild/Scenic) River (Way)

Route 0905A

SODERBECK LANDING
FROM FERRY ROAD

Route	Public / NonPublic	Date Visited	Area (sq ft)	Lane Miles *	Surface Type	Condition / PCR
0905A	Public	6/26/2003	5495	0.09	AS	FAIR / 73

* Lane miles are based on 11' lane widths



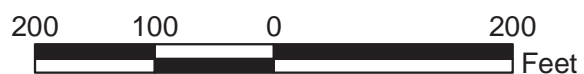
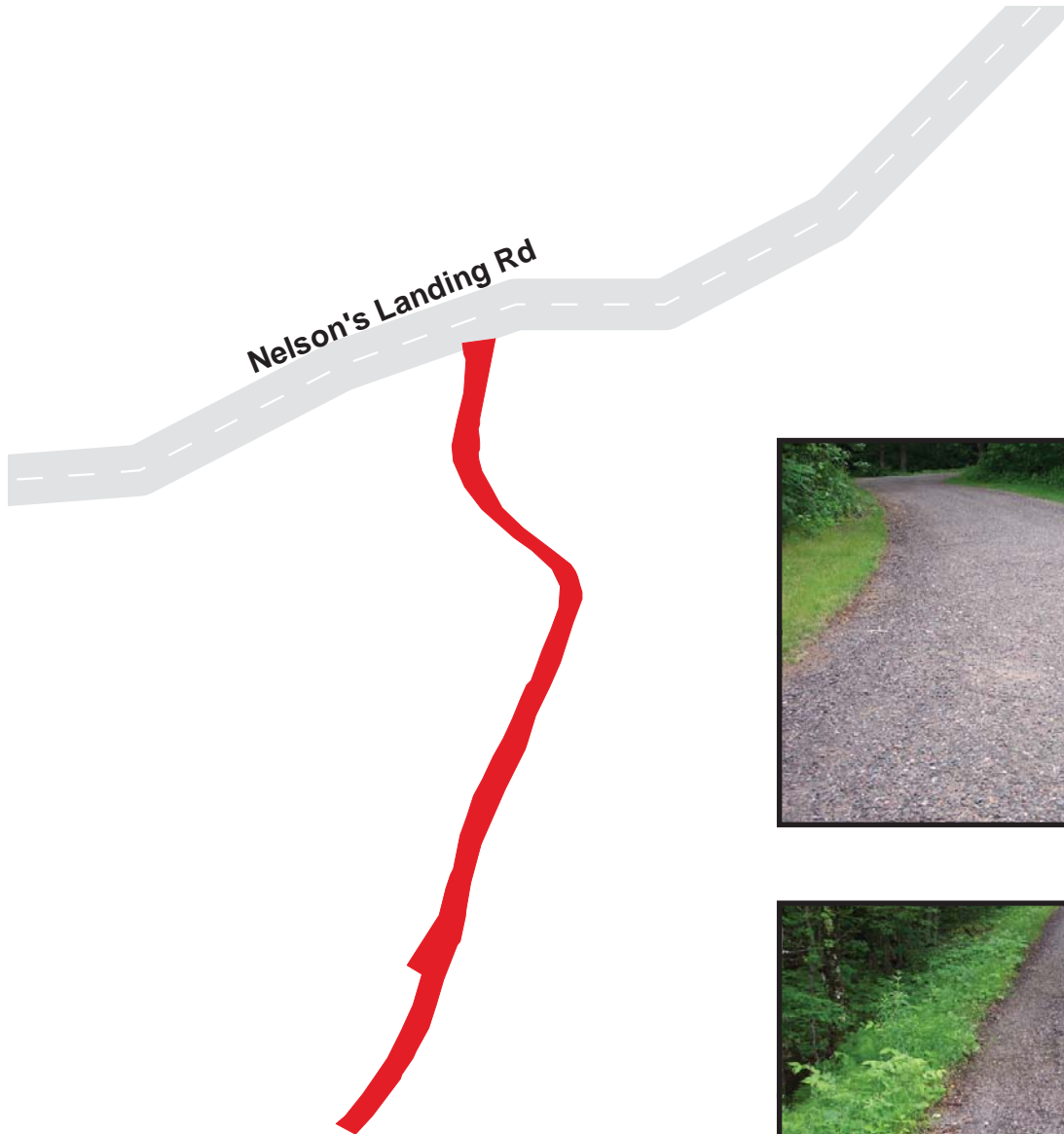
Saint Croix/Lower St. Croix National (Wild/Scenic) River (Way)

Route 0906A

NELSON'S LANDING
FROM NELSON'S LANDING ROAD

Route	Public / NonPublic	Date Visited	Area (sq ft)	Lane Miles *	Surface Type	Condition / PCR
0906A	Public	6/26/2003	10122	0.17	OC	POOR / 45

* Lane miles are based on 11' lane widths



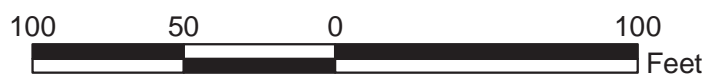
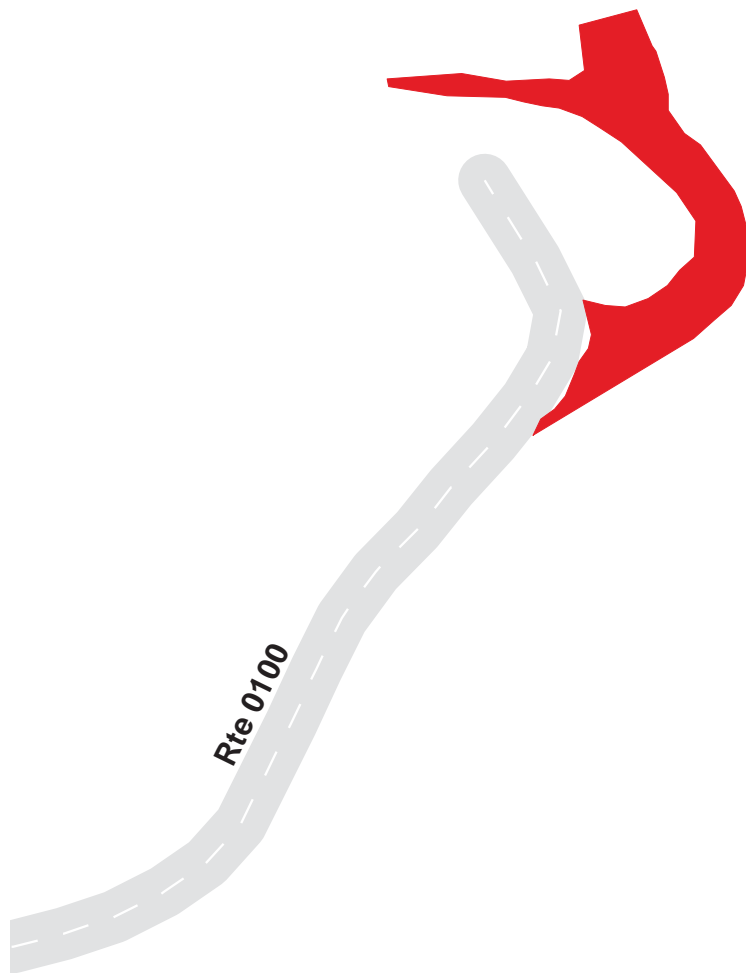
Saint Croix/Lower St. Croix National (Wild/Scenic) River (Way)

Route 0907

NORWAY POINT LANDING
FROM ROUTE 0100

Route	Public / NonPublic	Date Visited	Area (sq ft)	Lane Miles *	Surface Type	Condition / PCR
0907	Public	6/26/2003	2513	0.04	OC	GOOD / 90

* Lane miles are based on 11' lane widths



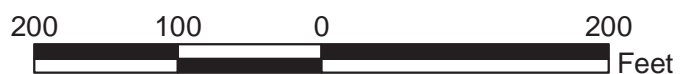
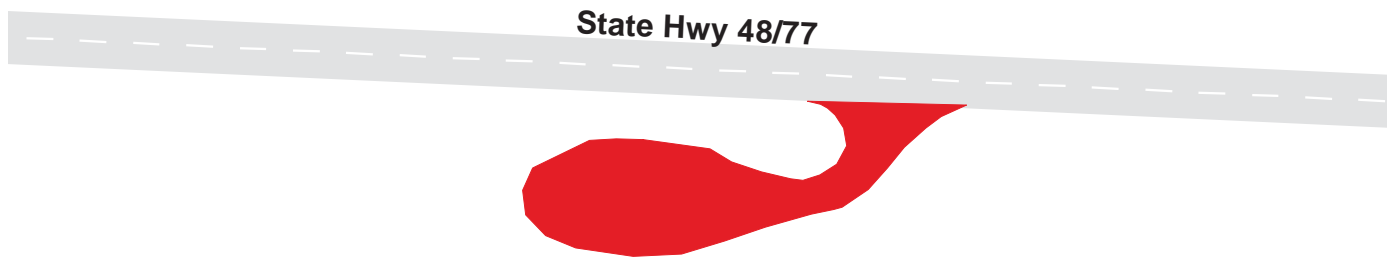
Saint Croix/Lower St. Croix National (Wild/Scenic) River (Way)

Route 0908

THAYER'S LANDING
FROM STATE HIGHWAY 48/77

Route	Public / NonPublic	Date Visited	Area (sq ft)	Lane Miles *	Surface Type	Condition / PCR
0908	Public	6/26/2003	10888	0.19	AS	FAIR / 73

* Lane miles are based on 11' lane widths



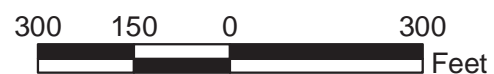
Saint Croix/Lower St. Croix National (Wild/Scenic) River (Way)

Route 0910

HIGHWAY 35 WAYSIDE
FROM STATE HIGHWAY 35

Route	Public / NonPublic	Date Visited	Area (sq ft)	Lane Miles *	Surface Type	Condition / PCR
0910	Public	6/26/2003	54238	0.93	OC	POOR / 45

* Lane miles are based on 11' lane widths



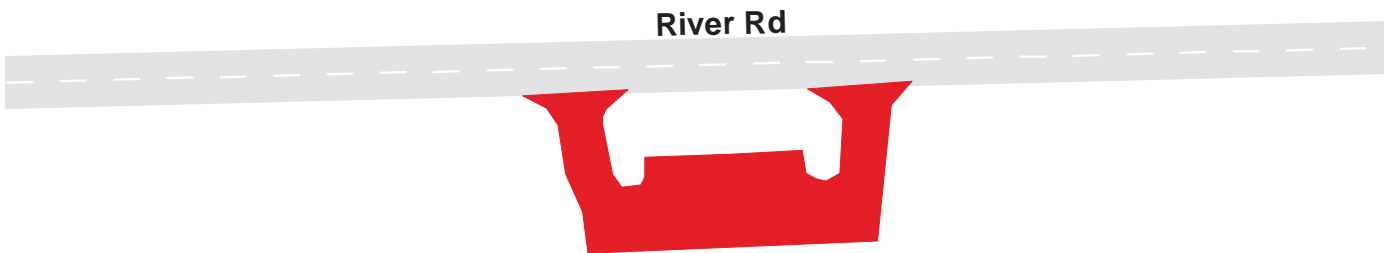
Saint Croix/Lower St. Croix National (Wild/Scenic) River (Way)

Route 0911

TREGO LAKE SKI TRAIL PARKING
FROM RIVER ROAD

Route	Public / NonPublic	Date Visited	Area (sq ft)	Lane Miles *	Surface Type	Condition / PCR
0911	Public	6/27/2003	8880	0.15	OC	FAIR / 73

* Lane miles are based on 11' lane widths



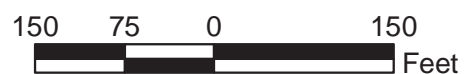
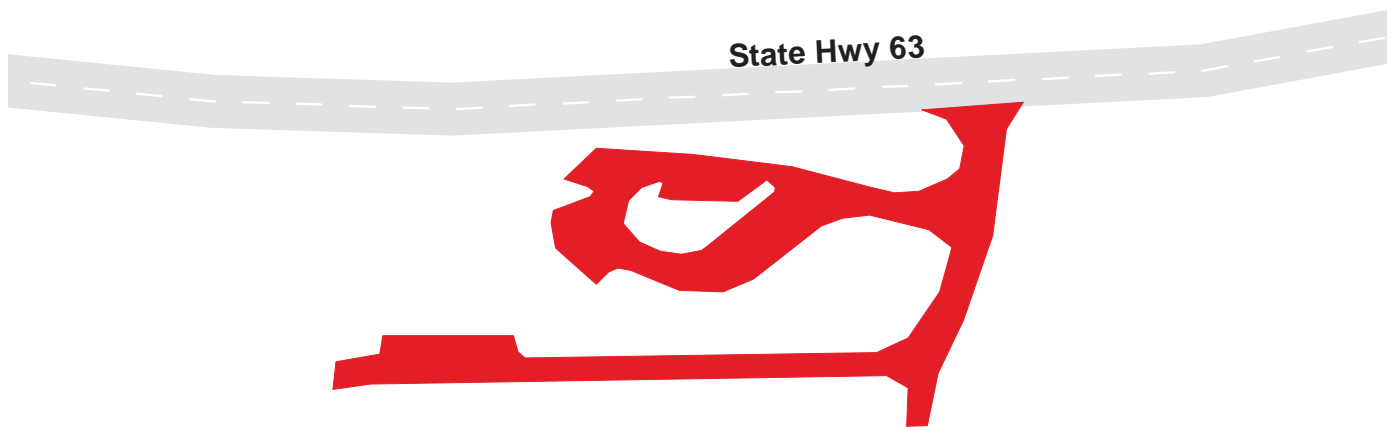
Saint Croix/Lower St. Croix National (Wild/Scenic) River (Way)

Route 0912

NAMEKAGON VISITOR CENTER PARKING
FROM STATE HIGHWAY 63

Route	Public / NonPublic	Date Visited	Area (sq ft)	Lane Miles *	Surface Type	Condition / PCR
0912	Public	6/27/2003	28594	0.49	AS	GOOD / 90

* Lane miles are based on 11' lane widths



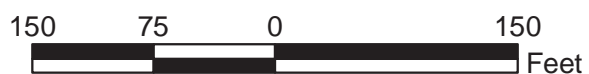
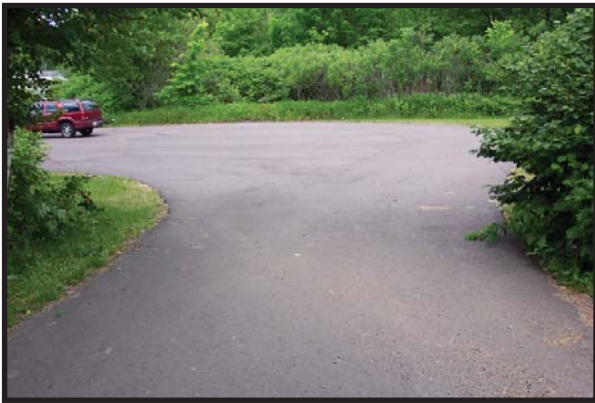
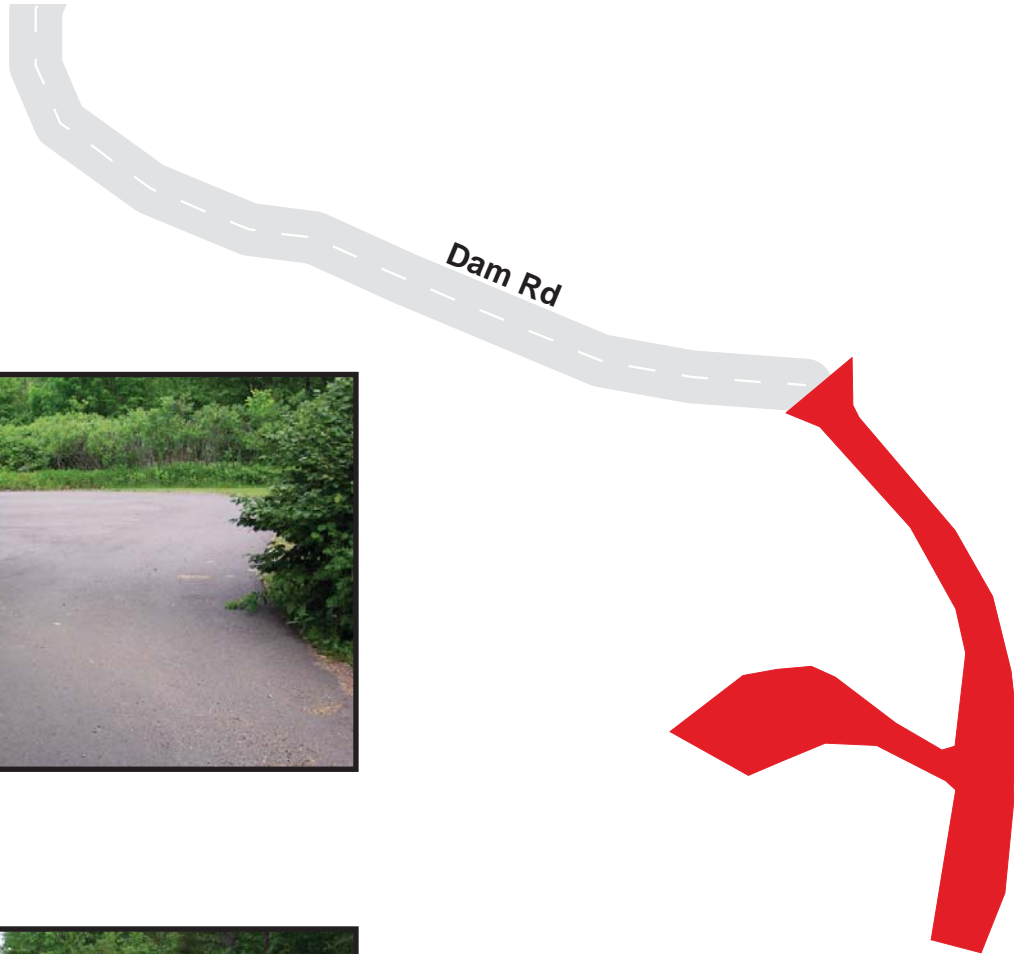
Saint Croix/Lower St. Croix National (Wild/Scenic) River (Way)

Route 0913

NAMEKAGON CANOE LANDING
FROM DAM ROAD (FOREST ROAD 211)

Route	Public / NonPublic	Date Visited	Area (sq ft)	Lane Miles *	Surface Type	Condition / PCR
0913	Public	6/27/2003	12165	0.21	AS	GOOD / 90

* Lane miles are based on 11' lane widths



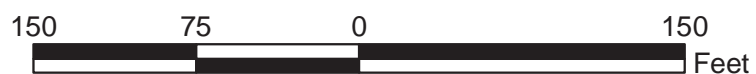
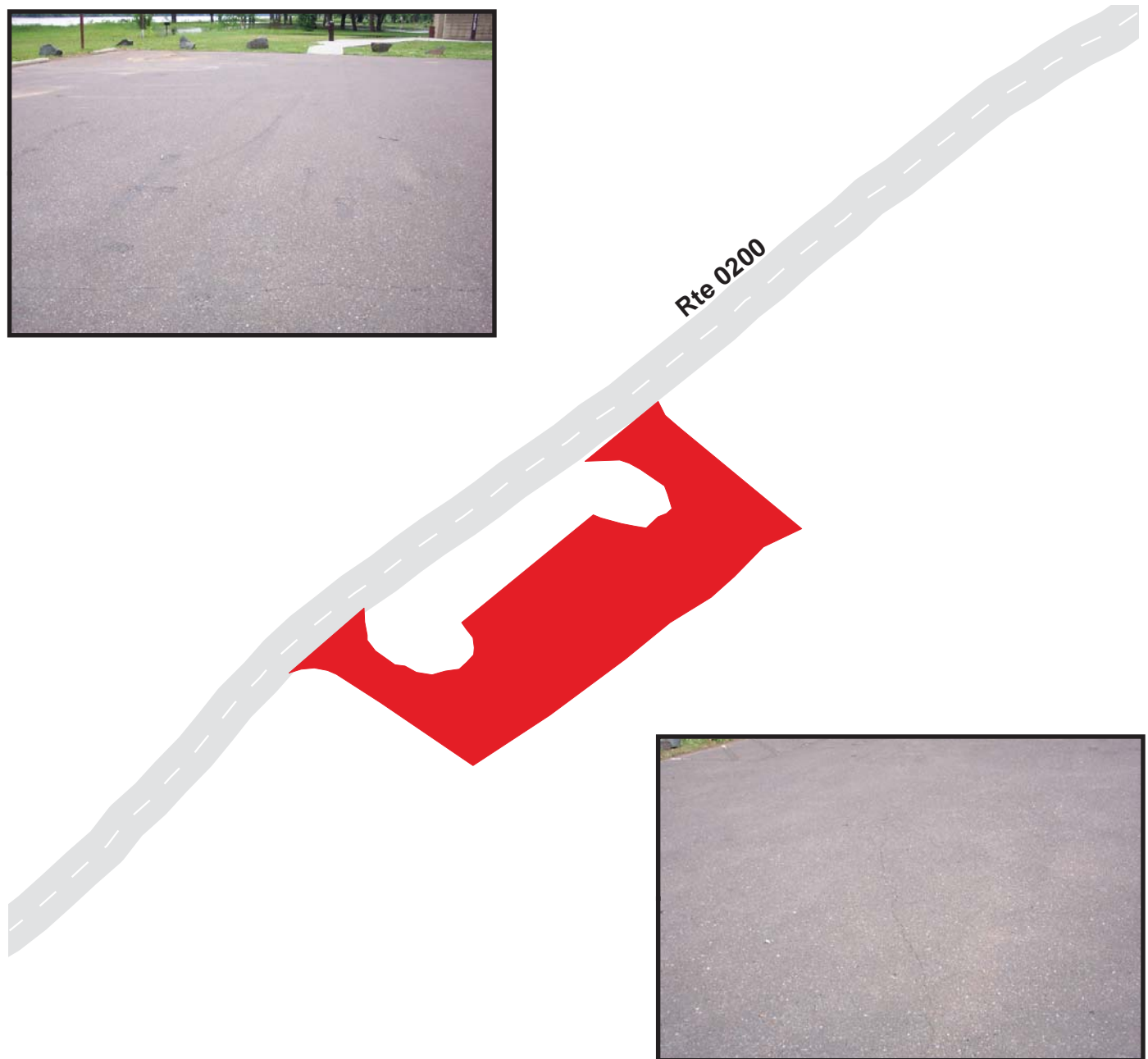
Saint Croix/Lower St. Croix National (Wild/Scenic) River (Way)

Route 0914

OSCEOLA SHELTER 1 PARKING
FROM ROUTE 0200

Route	Public / NonPublic	Date Visited	Area (sq ft)	Lane Miles *	Surface Type	Condition / PCR
0914	Public	6/26/2003	12410	0.21	AS	GOOD / 90

* Lane miles are based on 11' lane widths



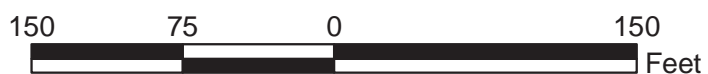
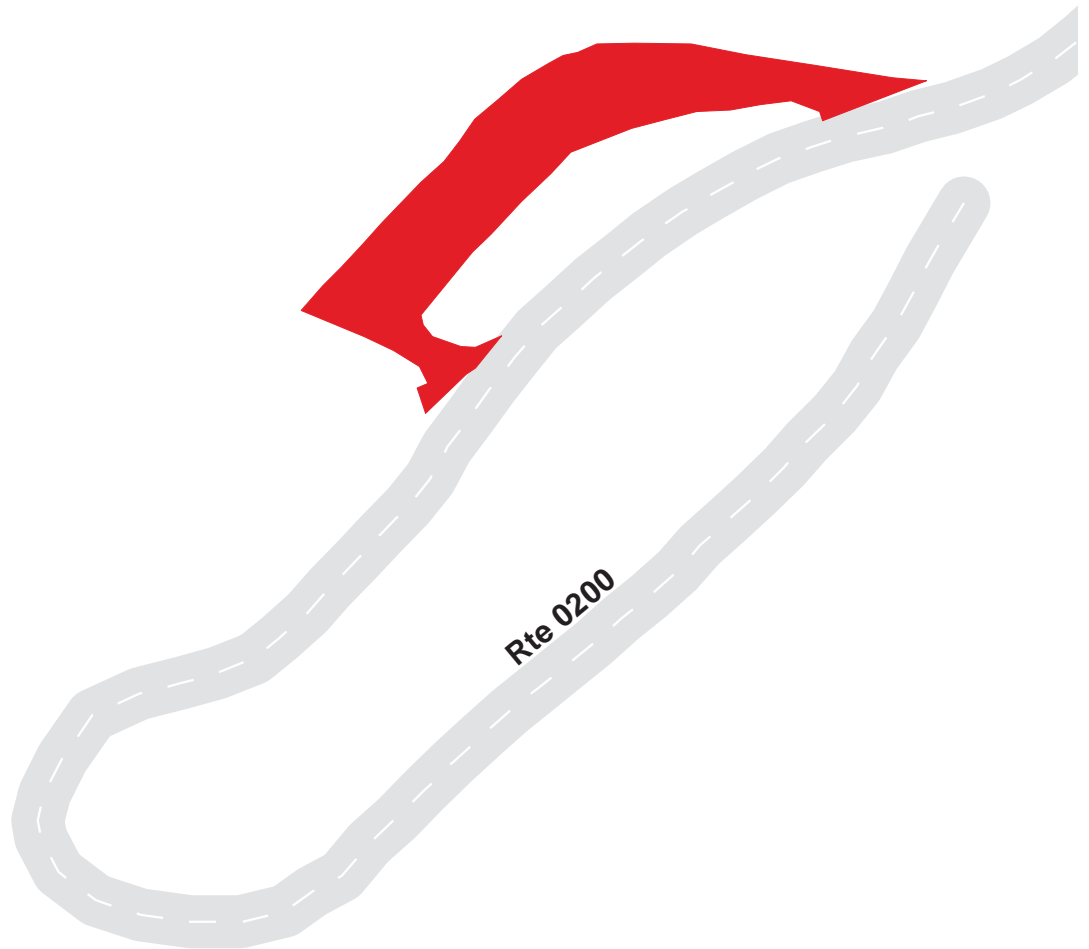
Saint Croix/Lower St. Croix National (Wild/Scenic) River (Way)

Route 0915

OSCEOLA BEACH PARKING
FROM ROUTE 0200

Route	Public / NonPublic	Date Visited	Area (sq ft)	Lane Miles *	Surface Type	Condition / PCR
0915	Public	10/4/2003	9019	0.16	AS	GOOD / 90

* Lane miles are based on 11' lane widths



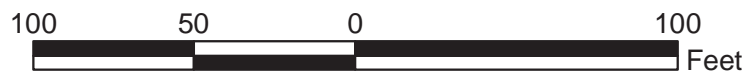
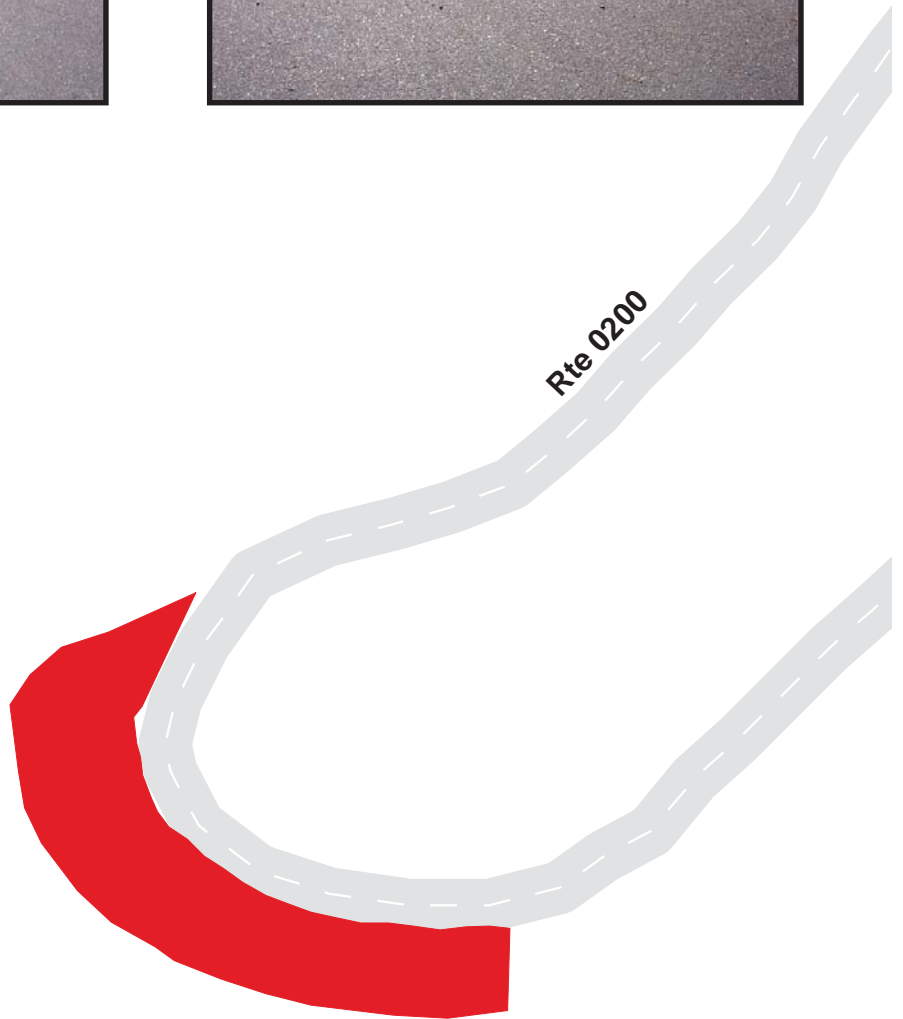
Saint Croix/Lower St. Croix National (Wild/Scenic) River (Way)

Route 0916

OSCEOLA SHELTER 2 PARKING
FROM ROUTE 0200

Route	Public / NonPublic	Date Visited	Area (sq ft)	Lane Miles *	Surface Type	Condition / PCR
0916	Public	10/4/2003	4673	0.08	AS	GOOD / 90

* Lane miles are based on 11' lane widths



SACN: PARKWIDE MAINTENANCE FEATURES SUMMARY

<i>FEATURE</i>	<i>PARK TOTAL</i>	<i>UNIT</i>
BRIDGE	0	EACH
CATTLE GUARD	0	EACH
CULVERT	2	EACH
CURB	0	LINEAR FEET
DROP INLET	0	EACH
GUARD WALL	0	LINEAR FEET
GUARDRAIL	0	LINEAR FEET
INTERSECTION	12	EACH
LOW WATER CROSSING	0	EACH
OVERHEAD SIGN	0	EACH
PARK BOUNDARY	0	EACH
PAVED DITCH	0	LINEAR FEET
PULLOUT	1	EACH
RAILROAD CROSSING	0	EACH
RETAINING WALL	0	EACH
STATE BOUNDARY	0	EACH
TRAFFIC LIGHT	0	EACH
TUNNEL	0	EACH
TURNOUT	0	LINEAR FEET

SACN: ROUTE MAINTENANCE FEATURES SUMMARY

<i>FEATURE</i>	<i>ROUTE 0100 NORWAY POINT ROAD</i>	<i>ROUTE 0200 OSCEOLA ROAD</i>	<i>UNIT</i>
BRIDGE	0	0	EACH
CATTLE GUARD	0	0	EACH
CULVERT	0	2	EACH
CURB	0	0	LINEAR FEET
DROP INLET	0	0	EACH
GUARD WALL	0	0	LINEAR FEET
GUARDRAIL	0	0	LINEAR FEET
INTERSECTION	4	8	EACH
LOW WATER CROSSING	0	0	EACH
OVERHEAD SIGN	0	0	EACH
PARK BOUNDARY	0	0	EACH
PAVED DITCH	0	0	LINEAR FEET
PULLOUT	0	1	EACH
RAILROAD CROSSING	0	0	EACH
RETAINING WALL	0	0	EACH
STATE BOUNDARY	0	0	EACH
TRAFFIC LIGHT	0	0	EACH
TUNNEL	0	0	EACH
TURNOUT	0	0	LINEAR FEET

SACN: ROUTE MAINTENANCE FEATURES ROAD LOG

ROUTE 0100 : NORWAY POINT ROAD

<i>FROM MILEPOST</i>	<i>TO MILEPOST</i>	<i>FEATURE</i>	<i>SIDE</i>	<i>COMMENT</i>
0.000	0.000			ROUTE BEGINS AT PARK BOUNDARY
0.016	0.016	INTERSECTION	LEFT	NON NPS GRAVEL
0.249	0.249	INTERSECTION	LEFT	ROUTE 100
0.263	0.263	INTERSECTION	RIGHT	ROUTE 907
0.277	0.277	INTERSECTION	LEFT	END OF LOOP
0.280	0.280			ROUTE ENDS AT END OF LOOP

SACN: ROUTE MAINTENANCE FEATURES ROAD LOG

ROUTE 0200 : OSCEOLA ROAD

<i>FROM MILEPOST</i>	<i>TO MILEPOST</i>	<i>FEATURE</i>	<i>SIDE</i>	<i>COMMENT</i>
0.000	0.000			ROUTE BEGINS AT ROUTE 900
0.003	0.003	CULVERT	N/A	
0.007	0.007	INTERSECTION	RIGHT	ROUTE 900
0.023	0.023	CULVERT	N/A	
0.111	0.111	INTERSECTION	LEFT	ROUTE 914
0.142	0.142	INTERSECTION	LEFT	ROUTE 914
0.198	0.198	INTERSECTION	LEFT	ROUTE 200
0.198	0.198	INTERSECTION	RIGHT	ROUTE 915
0.238	0.238	INTERSECTION	RIGHT	ROUTE 915
0.290	0.290	INTERSECTION	RIGHT	RTE 916
0.353	0.375	PULLOUT	RIGHT	
0.392	0.392	INTERSECTION	LEFT	ROUTE 200
0.400	0.400			ROUTE ENDS AT END OF LOOP

APPENDIX A: GLOSSARY OF TERMS AND ABBREVIATIONS

TERM OR ABBREVIATION	DESCRIPTION OR DEFINITION
6590	Numeric Code for Saint Croix/Lower St. Croix National (Wild/Scenic) River (Way)
AADT	Annually Adjusted Daily Traffic. Average daily traffic adjusted for the term period comprising 80% of annual visitation
CRS	Condition Rating Sheets. (Section 5)
Drainage Condition Rating	A visual rating (Good, Poor) of the drainage condition. (see Section 10)
Excellent	Excellent rating with an index value of 95 or greater
Fair	Fair rating with an index value between 61 and 84
Func. Class	Functional Classification (see Route ID, Section 4)
Good	Good rating with an index value between 85 and 94
IRI	International Roughness Index
Lane Width	Distance from road centerline to fogline, or from centerline to edge-of-pavement when no fogline exists
MRR	Manually Rated Route
NA	Not Applicable
NC	Not Collected
Paved Width	Distance from edge-of-pavement to edge-of-pavement
PCR	Pavement Condition Rating (see Section 10)
Poor	Poor Rating with an index value of 60 or less

RCI	Roughness Condition Index
SACN	Alpha Code for Saint Croix/Lower St. Croix National (Wild/Scenic) River (Way)
SADT	Seasonal Annual Daily Traffic. Average daily traffic for the total defined "season"
SCR	Surface Condition Rating (see Section 10)
Shoulder Condition Rating	Visual rating (Good, Poor) of the condition of shoulder. (see Section 10)
Shoulder Width	Distance from fogline to hinge point, or if no fogline, from edge-of-pavement to hinge point

APPENDIX B: DESCRIPTION OF RATING SYSTEM

A numerical roadway rating system is used to describe the overall condition of the paved roadways and paved parking areas. In this system, a numerical rating between 1 and 100 is ascribed to each 0.02 miles of road. This numerical rating is called a Pavement Condition Rating (PCR). A “perfect” road, newly constructed with no surface distresses and a smooth surface, would be assigned a PCR rating of 100. Based on the type, severity, and extent of surface distresses points are deducted from 100 to arrive at the final PCR.

Data is collected on the following distresses and conditions:

- **Alligator Cracking** - a series of interconnecting cracks resembling alligator skin or chicken wire, which can occur anywhere in the lane.
- **Longitudinal Cracking** - cracks which are parallel to the pavement centerline or asphalt lay-down direction.
- **Transverse Cracking** - cracks perpendicular to the pavement centerline.
- **Pothole (patch)** - a bowl-shaped hole in the pavement surface. May be patched or not.
- **Rutting** - surface depressions in the wheel paths.

Roughness is collected as International Roughness Index (IRI) and is used in the PCR formula. Roughness is measured in inches of vertical displacement of the vehicle per mile traveled.

A Distress Rating Index value is calculated for each of the individual distresses at the 0.02 mile, or every 105.6 feet.

Rating Index Formulas

Alligator Cracking Index = $100 - [40 * (\%low/70 + \%medium/30 + \%high/10)]$

Longitudinal Cracking Index = $100 - [40 * (\%low/350 + \%medium/200 + \%high/75)]$

Transverse Cracking Index = $100 - [(20 * (low/15.1 + medium/7.5)) + (40 * (high/1.9))]$

Patching Index = $100 - [40 * (\%patching / 80)]$

Rutting Index: $100 - [40 * ((low/160) + (med/80) + (high/40))]$

Roughness Condition Index: (RCI) = $32 * [5 * e^{(-0.0041 * \text{average IRI})}]$

These 0.02 Distress Rating Index values are then averaged over one mile sections for the mile-by-mile Distress Rating Indexes, Surface Condition Rating (SCR) and Pavement Condition Rating (PCR).

Surface Condition Rating (SCR) = $100 - [(100 - AC_INDEX) + (100 - LC_INDEX) + (100 - TC_INDEX) + (100 - PATCH_INDEX) + (100 - RUT_INDEX)]$

Pavement Condition Rating (PCR) = $(SCR * 0.60) + (RCI * 0.40)$

NOTE: Collection of roughness data is dependant on the data collection vehicle traveling at a minimum speed of 12 mph. In the event that a route cannot be safely traveled at this minimum speed, and results in no roughness data, the SCR only will be calculated.

Parking Lot and Manually Rated Road Condition Rating

Surface Condition Distresses- Chip Seal:

- Raveling – loss of surface rock chips revealing previous surface
- Bleeding – asphalt or tar is bleeding through to the surface where surface looks slick with asphalt
- Rutting
- Potholes/Patching

Ratings - Chip Seal:

- Excellent – None of the surface affected by the above (recently constructed)
- Good – Less than 10% of surface affected by the above
- Fair – Between 10% and 40% of surface affected by the above
- Poor – More than 40% of surface affected by the above

Surface Condition - Asphalt:

- Cracking of any type
- Rutting
- Potholes/Patching

Ratings - Asphalt:

- Excellent – None of the surface affected by the above (recently constructed)
- Good – Less than 10% of surface affected by the above
- Fair – Between 10% and 40% of surface affected by the above
- Poor – More than 40% of surface affected by the above

Index Values of Visual Ratings on Parking Lots and Manually Rated Roads

Excellent	97
Good	90
Fair	73
Poor	45

Drainage Condition Rating Definitions

- Good:** Minimal overall drainage problems. If funding were available for pavement maintenance, 25% or less is estimated to correct drainage deficiencies.
- Poor:** Problems exist that jeopardizes the integrity of the road in this section. If funding were available for pavement maintenance, 50% to 100% is estimated to correct drainage deficiencies.

Drainage Condition Rating Criteria

The following are examples of basic criteria to help the rater to identify the different drainage ratings. While in the field, many other flaws will be discovered, but these criteria should give a feel for where the flaws would apply in the ratings.

Good Drainage

Most water clears the road prism adequately with little concern of base saturation.

- X Pavement has minor deficiencies that interrupt water flow.
- X Shoulders are mostly adequate as they relate to surrounding terrain. Shoulder design generally coincides with the drainage design.
- X Curbs have deficiencies, but still function without erosion.
- X Down drains are placed properly, but show signs of some deterioration.
- X Culverts are adequate in numbers and size however, minor deficiencies are evident.
- X Ditches are not paved, but solid and have enough area to maintain and carry required volume of water.

Poor Drainage

This section has areas of inadequate drainage ability that is causing base saturation that could cause a road failure.

- X Pavement grade is irregular and holds dangerous amounts of water (hydroplaning is a concern), or shows massive alligator cracking.
- X Shoulder design induces ponding that encroaches on the pavement (drivers try to avoid ponds).
- X Portions of curbs are missing, allowing water to escape causing erosion.
- X Drop inlets, due to various reasons, are only able to drain 50% or less efficiently.
- X Down drains show signs of water exiting in areas by the down drain causing erosion.
- X Culverts are functionally deficient including size, installation, location, or grade giving water opportunity to saturate the road base.
- X Ditches allow water opportunity to saturate the road base through various reasons such as low places in ditch where design has not allowed for water to drain, little or no room in the road prism for a needed ditch, or water is disappearing within the ditch.

Shoulder Condition Rating Definitions

- Good:** The shoulder is generally in good functional condition.. If curbs are present, they are functional.
- Poor:** There is no shoulder because erosion has removed it. If curbs are present, they need to be replaced.

Shoulder Rating Criteria

The following are examples of basic criteria to help the rater to identify the different shoulder ratings. While in the field, many other flaws will be discovered, but these criteria should give a feel for where the flaws would apply in the ratings.

Good Shoulders

- X If shoulder is unpaved drop-offs are less than 1", but grading is required.
- X If shoulder is paved rut depth is less than 1/2", sealed cracks are present, and grading is required.
- X If curbs are present they are functional.

Poor Shoulder

- X If shoulder is unpaved drop-offs are greater than 4" and erosion has removed the shoulder.
- X If shoulder is paved rut depth is greater than 1". Open cracks are greater than 1/4" deep, and erosion has removed the shoulder.
- X If curbs are present they need replacement.
- X If curbs are present they need repairs, and there is erosion behind the curb.

APPENDIX C: DIGITAL IMAGE INFORMATION

All images collected in Cycle 3 are digital images. These images provide the best resolution for identifying sign inventories and pavement evaluations. The images can be viewed with an interactive software program called **Visi-Data**. Each park will have a copy of the Visi-Data program installed in the park for park personnel to access and use.

Only Cycle 3 data can be queried and reviewed using the Visi-Data software program. This program is a multimedia data presentation and analysis tool that can be accessed either at the individual park, park region or at NPS headquarters. The data is organized in a hierarchical manner and presented in tabular and graphical formats. The user is able to perform queries and drill down through the data to find the particular information they are trying to query. Associated digital right-of-way images from either the LAN, USB port, individual DVD, or from the Visi-web application, can be presented along with the GPS locations.

APPENDIX D: METADATA

ARAN ROUTE GPS DATA

Background information of route spatial data.

GPS Records: GPS data for NPS routes is stored in the MS Access database for the park. The coordinates of the road traces are stored in the 'PMS_20' table in the 'GPS_LAT' and 'GPS_LON' fields.

Data Collection Device:

Vehicle Information: Ford Van
Type of GPS Unit: NovAtel MiLLennium, 12 channel, dual frequency L1/L2, DGPS ready receiver w/MiLLennium 502 GPS antenna and OmniSTAR System 3000 LR
Inertial System: Applanix POS LV

Accuracy: Expected ground accuracy is 1 meter *

*The above accuracy assumes good GPS mission planning resulting in maximum GPS satellite observation and ideal environmental conditions. Due to less than ideal satellite and environmental conditions, some routes may lack the expected ground accuracy.

Geographic Datum: WGS 1984

Post Collection GPS Correction: Due to unanticipated GPS collection inaccuracies, some route locations have been digitized using DOQQ's and other data sources.

FHWA – NPS Road Inventory Program Cycle 3 Metadata for the Park Database

The purpose of these sheets is to provide users of the Road Inventory Program's data with data accuracies and tolerances to help users define ways in which the RIP data can and cannot be used. For further information on specifics of data collection equipment, data collection procedures, equipment calibrations, or quality control/quality assurance procedures, please contact Jim Kennedy, Project Manager, Data Quality Assurance, at 720-963-3560 or jim.kennedy@fhwa.dot.gov.

All Road Inventory Program data undergoes quality control and quality assurance testing. This document represents the known data accuracies and tolerances for the data collection equipment, data collection procedures, and data processing procedures currently in use. Many additional tests conducted on the park databases during the quality assurance phase to ensure data integrity are not listed as a part of this document. Before it is delivered, a park database undergoes a large set of table design consistency, field data format consistency, data completeness, uniqueness of key fields, data reasonableness, acceptable data range, within-field data consistency, between-field data consistency, and between-table data consistency tests. Additional data sampling checks are conducted to ensure proper data upload from raw files into the park database and to quality check the pavement crack analysis. Further information is detailed in the FHWA – NPS RIP Quality Assurance Manual, available upon request.

This description of metadata includes only the known accuracies with which a data field matches its expected value. The tables that follow this page show each database field's:

- Field – field name
- Format – data type and number of characters of field
- Expected Value – meaning of value assigned to field
- Source – when in process field value obtained
- Validation – how field value obtained
- Expected Accuracy – accuracy with which contents of field match Expected Value

Verifying and continually improving the accuracy of Road Inventory Program data is an ongoing goal of the Federal Highway Administration and the National Park Service. Field testing and post-collection analysis of ARAN (Automatic Road Analyzer) -collected data will continue in Cycle 4. Data quality is expected to improve as the FHWA – NPS Road Inventory Program continues to operate, due to the fact that future data collection cycles will consist in large part of data updates. Also, technological improvements are expected to render the data increasingly consistent with actual roadway conditions as data collection cycles progress.

Specific Caveats

- Three canned reports are titled “Features in Good Condition”, “Features in Fair Condition,” and “Features in Poor Condition.” These titles could be misleading. In Cycle 3, condition assessments have been conducted on **signs only**. Condition assessments have not been conducted on non-sign features, such as culverts, guardrails, pullouts, etc. Although the database and canned reports might report a default value of “good” for un-assessed features, these condition values are not valid for import into FMSS.
- Database records that show a concrete surface type sometimes include index values that seem to show a perfect roadway (e.g., a Pavement Condition Rating (PCR) of 100). The Road Inventory Program does not actually conduct condition assessments of concrete surfaces. The perfect values are just default values assigned to unassessed sections of pavement and do not represent an assessment of the roadway surface's quality.
- On the USB drive, in the Database folder, parks are provided with intersection lists and exceptions lists. These documents should be treated as raw files and are **not accurate**. Refer to the final database for accurately post-processed intersection data.
- Most roadway data is collected in the primary direction lane of a roadway. To save data storage

space and to reduce data analysis efforts, the assumption was made that the paved surface condition of a route's primary lane adequately represents the surface condition of the full roadway. Therefore, in the database, opposite-direction records in the PMS_Visidata table do not include assessed values for roadway surface distresses. Values such as 0, N/A, -1, or a repeat of the primary-direction assessed value indicate that no assessment was performed. The PMS_20 and PMS_Mile tables simply exclude all opposite routes.

- Most roadway features are collected relative to the primary direction lane of a roadway, using the primary-direction video. Signs are the only features collected using the opposite-direction video.

Key to Notes in Tables

(1): Note that only one value fits in field, so even if this value varies throughout the route, only one value is recorded here.

(2): Note that some MP values listed here are estimates recorded during the Route ID process for use by the data collection crew (e.g. "FROM ROUTE 0010 AT MILEPOST 30.3"). They are estimates only and are not expected to match the more accurate milepost values included elsewhere in the database in the BEG_MP, END_MP, and MP fields.

(3): Mileage is measured by the ARAN (Automatic Road ANalyzer) data collection vehicle out to the 0.001 decimal place. The DMI (distance measuring instrument) is very accurate, with extremely slight variations in measurement due to air temperature, tire inflation, curves, hills, and equipment calibration.

(4): Features are measured differently depending on whether they are visible in the forward-facing video of the roadway, but every feature milepost measurement depends on the baseline measurement of the data collection vehicle's mileage. The ARAN (Automatic Road ANalyzer) data collection vehicle's mileage is measured by the DMI (distance measuring instrument) out to the 0.001 decimal place. The DMI is very accurate, with extremely slight variations in measurement due to air temperature, tire inflation, curves, hills, and equipment calibration. If a feature will not be visible in the forward-facing video, its milepost is determined by the data collectors' key press tagging the milepost when the ARAN passes the feature. Key presses are entered into the ARAN software when the vehicle travels typically between 15 and 45 miles/hour, so a delay of a single second as the vehicle passes a feature would result in an inaccuracy of 0.004 miles (22 feet) to 0.012 miles (66 feet). If a feature is visible in the video, its milepost is determined during post-processing using a video measurement software called Surveyor. Features along the side of a roadway that are measured using the Surveyor software might not be located very accurately. Surveyor is known to be most accurate when measuring quantities near the center of the video frame, as opposed to in the edges of the video image.

(5): Only signs are evaluated for condition. No other features' conditions are assessed, so "N/A" was originally intended to be the default value for unassessed features. However, some non-sign features do have condition ratings in the database. These are not accurate, because no assessment was ever done on non-sign features.

(6): Condition assessments are not conducted on concrete (CO) surface types. Perfect values for concrete road sections are default values and do not represent a condition assessment of the concrete surfaces.

(7): Roadway cracking presence, type, severity, and extent are determined by filming the roadway in the primary lane continuously with two overlapping analog cameras of 640 x 480 resolution. The images from both cameras are stitched together in real time to create a continuous strip image of the roadway pavement in the primary lane. Cracks 3 mm or greater in width are visible in this video. A semi-automatic process running the WiseCrax software with additional input by human operators provides the cracking quantities recorded in these database fields. Quality checks have determined that a consistent 80% or better of the visible cracks are recorded.

Access Database Metadata

Master Table Metadata:

FIELD	FORMAT	EXPECTED VALUE	SOURCE	VALIDATION	EXPECTED ACCURACY
RIP_CYCLE	X	3, for data collection cycle 3	Route ID Meeting	FHWA Determination	100%
STATE	XX	State where route is located	Route ID Meeting	Park Input/FHWA Determination	Untested. (1)
PARK_ALPHA	XXXX	Park alpha code	Route ID Meeting	NPS References	Untested
PARK_NO	XXXX	Park numeric code	Route ID Meeting	NPS References	Untested
RTE_NO	XXXXXX	Route number	Route ID Meeting	Park Input/FHWA Classification	Untested
RTE_NAME	(Text)	Route name	Route ID Meeting	Park Input	Untested. 50 characters fit in field
FUNCT_CLAS	X	Route functional classification	Route ID Meeting	Park Input/FHWA Classification	Untested
DIRECTION	XXX	Survey lane: PRI (primary) or OPP (opposite)	Route ID Meeting	Park Input/FHWA Determination	Untested
BEG_MP_EST	999.999 (miles)	Estimated starting MP	Route ID Meeting	Park Input/FHWA Determination	Estimated before data collected
END_MP_EST	999.999 (miles)	Estimated ending MP	Route ID Meeting	Park Input/FHWA Determination	Estimated before data collected
RTE_LENGTH	999.999 (miles)	Collected route length	ARAN Data Collection	Automatic Output	100%
FROM_DESC	(Text)	Beginning terminus of route	Route ID Meeting	Park Input/FHWA Determination	Estimated before data collected. (2)
TO_DESC	(Text)	Ending terminus of route	Route ID Meeting	Park Input/FHWA Determination	Estimated before data collected. (2)
NO_LANES	X	Number of lanes in route	ARAN Data Collection	Survey Crew Input	Untested. (1)
SURF_TYPE	XX	Surface type of route	ARAN Data Collection	Survey Crew Input	Untested. (1)
COMP_DIR	XX	Compass direction of route's primary lane (nearest cardinal direction)	Route ID Meeting	Park Input/FHWA Determination	Untested
COMMENTS	(Text)	Special information, if any	Contractor Post-processing	Contractor Input	Untested
FILENAME	XXXXXXXXXX	Filename of raw data files	ARAN Data Collection	Automatic Output	100%
SECTION	XXXXXX	Route section ID	Route ID Meeting/ARAN Data Collection	Survey Crew Input/Automatic Output	100%
FKEY	9999999	Unique record ID	Contractor Post-processing	Database Processing	100%
DATE	DD/MM/YY	Data collection date	ARAN Data Collection	Automatic Output	100%
BEG_MP	999.999 (miles)	Beginning MP collected	ARAN Data Collection	Automatic Output	100% (3)
END_MP	999.999 (miles)	Ending MP collected	ARAN Data Collection	Automatic Output	100% (3)

PMS_Feature Table Metadata:

FIELD	FORMAT	EXPECTED VALUE	SOURCE	VALIDATION	EXPECTED ACCURACY
RIP_CYCLE	X	3, for data collection cycle 3	Route ID Meeting	FHWA Determination	100%
STATE	XX	State where route is located	Route ID Meeting	Park Input/FHWA Determination	Untested. (1)
PARK_ALPHA	XXXX	Park alpha code	Route ID Meeting	NPS References	Untested
PARK_NO	XXXX	Park numeric code	Route ID Meeting	NPS References	Untested
RTE_NO	XXXXXXXX	Route number	Route ID Meeting	Park Input/FHWA Classification	Untested
FUNCT_CLAS	X	Route functional class	Route ID Meeting	Park Input/FHWA Classification	Untested
DIRECTION	XXX	Survey lane: PRI (primary) or OPP (opposite)	Route ID Meeting	Park Input/FHWA Determination	Untested
MP	999.999 (miles)	Feature location along route	ARAN Data Collection/Contractor Post-processing	Survey Crew Input/Video Processing	Untested (4)
EVENT	XXXX	Event category of feature	Contractor Post-processing	Video Processing	Untested
EVENT_CODE	XXXX	Event sub-category of feature	Contractor Post-processing	Video Processing	Untested
EVENT_DESC	(Text)	Description of feature/contents of sign	Contractor Post-processing	Video Processing	Untested
MUTCD	"N/A"	N/A. Intended to be sign MUTCD code	Contractor Post-processing	Database Processing	Values inaccurate, defaulted to N/A
CONDITION	XXX	Sign condition (G-D, F-R, P-R, N/A)	Contractor Post-processing	Video Processing	Untested (5)
COMMENT	(Text)	Sign label, intersecting route, etc.	Contractor Post-processing	Database Processing	Untested
OFFSET	"N/A"	N/A. Intended to be offset from pavement edge	Contractor Post-processing	Database Processing	Values inaccurate, defaulted to N/A
SIDE	XXX	Side of route; "N/A" if not on one side	Contractor Post-processing	Video Processing	Untested
STR_NUMBER	XXXXXXXXXXX	FHWA bridge structure number	FHWA Post-processing	Database Processing	Untested
GPS_LAT	"N/A"	N/A. Intended to be latitude coordinate	Contractor Post-processing	Database Processing	Values inaccurate, defaulted to N/A
GPS_LON	"N/A"	N/A. Intended to be longitude coordinate	Contractor Post-processing	Database Processing	Values inaccurate, defaulted to N/A
GPS_ELEV	"N/A"	N/A. Intended to be elevation	Contractor Post-processing	Database Processing	Values inaccurate, defaulted to N/A
GPS_MODE	"N/A"	N/A. Intended to be GPS mode	Contractor Post-processing	Database Processing	Values inaccurate, defaulted to N/A
VIDEO	<Park-C03VID-#>	Removable USB video hard drive number	Contractor Post-processing	Database Processing	Untested
IMAGE	(Text)	Filename of .jpg image showing feature	Contractor Post-processing	Automatic Output	Untested
DATE	DD/MM/YY	Data collection date	ARAN Data Collection	Automatic Output	100%
FILENAME	XXXXXXXXXX	Filename of raw data files	ARAN Data Collection	Automatic Output	100%
SECTION	XXXXXX	Route section ID	Route ID Meeting/ARAN Data Collection	Survey Crew Input/Automatic Output	100%
FKEY	9999999	Unique record ID	Contractor Post-processing	Database Processing	100%
VISL_FROM	999999 (millimiles)	Raw MP of first video frame showing feature	Contractor Post-processing	Database Processing	Untested
VISL_TO	999999 (millimiles)	Raw MP of last video frame showing feature	Contractor Post-processing	Database Processing	Untested

FIELD	FORMAT	EXPECTED VALUE	SOURCE	VALIDATION	EXPECTED ACCURACY
IDKEY	(Text)	Unique record ID used by VisiData	Contractor Post-processing	Database Processing	Untested
MP_REF	(Text)	Range of mileage to play in VisiData	Contractor Post-processing	Database Processing	Untested

PMS 20, PMS Mile & PMS Visidata Tables Metadata:

FIELD	FORMAT	EXPECTED VALUE	SOURCE	VALIDATION	EXPECTED ACCURACY
RIP_CYCLE	X	3, for data collection cycle 3	Route ID Meeting	FHWA Determination	100%
STATE	XX	State where route is located	Route ID Meeting	Park Input/FHWA Determination	Untested. (1)
PARK_ALPHA	XXXX	Park alpha code	Route ID Meeting	NPS References	Untested
PARK_NO	XXXX	Park numeric code	Route ID Meeting	NPS References	Untested
RTE_NO	XXXXXX	Route number	Route ID Meeting	Park Input/FHWA Classification	Untested
FUNCT_CLASS	X	Route functional class	Route ID Meeting	Park Input/FHWA Classification	Untested
DIRECTION	XXX	Survey lane: PRI (primary) or OPP (opposite)	Route ID Meeting	Park Input/FHWA Determination	Untested
BEG_MP	999.999 (miles)	MP at start of road interval described by database record	Contractor Post-processing	Database Processing	100% (3)
END_MP	999.999 (miles)	MP at end of road interval described by database record	Contractor Post-processing	Database Processing	100% (3)
INT_LENGTH	999.9 (ft)	Length of road interval as aggregated for data table	Contractor Post-processing	Database Processing	100%
RTE_LENGTH	999.999 (miles)	Collected route length	ARAN Data Collection	Automatic Output	100%
NO_LANES	X	Number of lanes in route	ARAN Data Collection	Survey Crew Input	Untested. (1)
LANE_NO	X	Data collection lane	Contractor Post-processing	Database Processing	Untested
WX_LANE_WIDTH	99.999 (ft)	WiseCrax (crack detection software) analysis width	Contractor Post-processing	Automatic Output	Untested
LANE_WIDTH	99.999 (ft)	Width of lane	Contractor Post-processing	Video Processing	Untested
PAVE_WIDTH	99.999 (ft)	Full pavement width	Contractor Post-processing	Video Processing	Untested
SHLD_WIDTH_L	99.999 (ft)	Left shoulder width	Contractor Post-processing	Video Processing	Untested
SHLD_WIDTH_R	99.999 (ft)	Right shoulder width	Contractor Post-processing	Video Processing	Untested
SHLD_COND_L	XXXX	Left shoulder condition	ARAN Data Collection	Survey Crew Input	Untested
SHLD_COND_R	XXXX	Right shoulder condition	ARAN Data Collection	Survey Crew Input	Untested
DRAIN_COND_L	XXXX	Left drainage condition	ARAN Data Collection	Survey Crew Input	Untested
DRAIN_COND_R	XXXX	Right drainage condition	ARAN Data Collection	Survey Crew Input	Untested
SURF_TYPE	XX	Surface type of route	ARAN Data Collection	Survey Crew Input	Untested. (1)
PCR	999	Pavement Condition Rating	Contractor Post-processing	Database Processing	100% for calculation (6)
RCI	999	Roughness Condition Index; -1 if invalid IRI	Contractor Post-processing	Database Processing	100% for calculation

FIELD	FORMAT	EXPECTED VALUE	SOURCE	VALIDATION	EXPECTED ACCURACY
SCR	999	Surface Condition Rating	Contractor Post-processing	Database Processing	100% for calculation (6)
IRI_AVG	999.9 (inches/mile)	Average IRI	Contractor Post-processing	Database Processing	Untested
IRI_SD	999.9 (inches/mile)	IRI standard deviation	Contractor Post-processing	Database Processing	Untested
IRI_L	999.9 (inches/mile)	Left wheel path IRI	ARAN Data Collection	Automatic Output	Untested
IRI_R	999.9 (inches/mile)	Right wheel path IRI	ARAN Data Collection	Automatic Output	Untested
IRI_FLAG	0 or -1	-1 if invalid IRI data	Contractor Post-processing	Database Processing	Untested
RUT_INDEX	999	Rut index	Contractor Post-processing	Database Processing	100% for calculation (6)
RUT_AVG	99.99 (inches)	Average rut depth of both wheelpaths	Contractor Post-processing	Database Processing	Untested (6)
RUT_MAX	99.99 (inches)	Maximum rut depth of both wheelpaths	Contractor Post-processing	Database Processing	Untested (6)
RUT_SD	9.9	Rut depth standard deviation	Contractor Post-processing	Database Processing	Untested (6)
RUT_LOW	999 (%)	Percent of low severity ruts (on a 0-200% scale) in both wheelpaths	Contractor Post-processing	Database Processing	Untested (6)
RUT_MED	999 (%)	Percent of medium severity ruts (on a 0-200% scale) in both wheelpaths	Contractor Post-processing	Database Processing	Untested (6)
RUT_HI	999 (%)	Percent of high severity ruts (on a 0-200% scale) in both wheelpaths	Contractor Post-processing	Database Processing	Untested (6)
XFALL	999.9 (% slope)	Cross fall at start of road interval	ARAN Data Collection	Automatic Output	Precise but inaccurate. Not reported in Cycle 4
GRADE	999.9 (% slope)	Grade at start of road interval	ARAN Data Collection	Automatic Output	Precise but inaccurate. Not reported in Cycle 4
AC_INDEX	999	Alligator cracking index	Contractor Post-processing	Database Processing	100% for calculation (6)
AC_LOW	999.9999 (%)	Percent of WiseCrax measured lane area with low-severity alligator cracking	Contractor Post-processing	Automatic Output	(6) (7)
AC_MED	999.9999 (%)	Percent of WiseCrax measured lane area with medium-severity alligator cracking	Contractor Post-processing	Automatic Output	(6) (7)
AC_HI	999.9999 (%)	Percent of WiseCrax measured lane area with high-severity alligator cracking	Contractor Post-processing	Automatic Output	(6) (7)
LC_INDEX	999	Longitudinal cracking index	Contractor Post-processing	Database Processing	100% for calculation (6)
LC_LOW	999.99 (%)	Low-severity longitudinal cracking in lane as a percentage of road interval length	Contractor Post-processing	Automatic Output	(6) (7)
LC_MED	999.99 (%)	Medium-severity longitudinal cracking in lane as a percentage of road interval length	Contractor Post-processing	Automatic Output	(6) (7)
LC_HI	999.99 (%)	High-severity longitudinal cracking in lane as a percentage of road interval length	Contractor Post-processing	Automatic Output	(6) (7)
TC_INDEX	999	Transverse cracking index	Contractor Post-processing	Database Processing	100% for calculation (6)
TC_LOW	999.99 (cracks)	Count of low-severity transverse cracks, where one crack unit equals the WiseCrax measured lane width	Contractor Post-processing	Automatic Output	(6) (7)
TC_MED	999.99 (cracks)	Count of medium-severity transverse cracks, where one crack unit equals the WiseCrax measured lane width	Contractor Post-processing	Automatic Output	(6) (7)
TC_HI	999.99 (cracks)	Count of high-severity transverse cracks, where one crack unit equals the WiseCrax measured lane width	Contractor Post-processing	Automatic Output	(6) (7)
PATCH_INDEX	999	Patching index	Contractor Post-processing	Database Processing	100% for calculation (6)

FIELD	FORMAT	EXPECTED VALUE	SOURCE	VALIDATION	EXPECTED ACCURACY
PATCHING	999.9999 (%)	Percent of WiseCrax measured lane area affected by patching	Contractor Post-processing	Manual Pavement Video Processing	Untested (6)
GPS_LAT	999.9999999	Latitude coordinate	ARAN Data Collection	Automatic Output	See GPS Metadata sheet distributed with data
GPS_LON	-999.9999999	Longitude coordinate	ARAN Data Collection	Automatic Output	See GPS Metadata sheet distributed with data
GPS_ELEV	999999.9	Elevation	ARAN Data Collection	Automatic Output	See GPS Metadata sheet distributed with data
GPS_MODE	XXX	GPS mode during collection	ARAN Data Collection	Automatic Output	See GPS Metadata sheet distributed with data
VIDEO	<Par/>-C03VID<#>	Removable USB video hard drive number	Contractor Post-processing	Database Processing	Untested
IMAGE	(Text)	Filename of .jpg image showing road interval	Contractor Post-processing	Automatic Output	Untested
SPEED	999 (miles/hour)	Average ARAN speed during data collection	ARAN Data Collection	Automatic Output	Untested
BRIDGE_FLAG	0 or 1	Flag indicating presence of bridge in interval	ARAN Data Collection	Survey Crew Input	Untested
CONSTR_FLAG	0 or 1	Flag indicating construction in interval	ARAN Data Collection	Survey Crew Input	Untested
LANEDEV_FLG	0 or 1	Flag indicating lane deviation in interval	ARAN Data Collection	Survey Crew Input	Untested
DATE	DD/MM/YY	Data collection date	ARAN Data Collection	Automatic Output	100%
NODISTRESS	0 OR 1	Flag indicating absence of pavement distress	Contractor Post-processing	Database Processing	100%
FILENAME	XXXXXXXXXX	Filename of raw data files	ARAN Data Collection	Automatic Output	100%
SECTION	XXXXXX	Route section ID	Route ID Meeting/ARAN Data Collection	Survey Crew Input/Automatic Output	100%
FKEY	9999999	Unique record ID	Contractor Post-processing	Database Processing	100%
VISL_FROM	999999 (millimiles)	Raw MP of first video frame in section	Contractor Post-processing	Database Processing	Untested
VISL_TO	999999 (millimiles)	Raw MP of last video frame in section	Contractor Post-processing	Database Processing	Untested
IDKEY	(Text)	Unique record ID used by VisiData	Contractor Post-processing	Database Processing	Untested
MP_REF	(Text)	Range of mileage to play in VisiData	Contractor Post-processing	Database Processing	Untested

Cycle Shapefile Metadata

Metadata is provided for all shapefiles used for the creation of RIP report documents. The metadata for each shapefile associated with the park can be found in Section 10 of the PDF report provided on your park CD.

All shapefiles have the following spatial characteristics:

Geographic_Coordinate_Units: Decimal degrees
Spheroid: WGS 1984

sacn_seg

Metadata also available as

Metadata:

- [Identification Information](#)
 - [Data Quality Information](#)
 - [Spatial Data Organization Information](#)
 - [Spatial Reference Information](#)
 - [Entity and Attribute Information](#)
 - [Distribution Information](#)
 - [Metadata Reference Information](#)
-

Identification_Information:

Citation:

Citation_Information:

Originator: The TSR Group

Publication_Date: 2005

Title: sacn_seg

Geospatial_Data_Presentation_Form: vector digital data

Online_Linkage: Not Available

Description:

Abstract: Routes

Purpose: Road Inventory Program

Supplemental_Information:

Data created by The TSR Group from GPS coordinates provided in the PMS_20 table. The shapefile is processed to aggregate adjacent segments with the same PCR rating.

Time_Period_of_Content:

Time_Period_Information:

Single_Date/Time:

Calendar_Date: 2005

Currentness_Reference: ground condition

Status:

Progress: Complete

Maintenance_and_Update_Frequency: As per RIP cycle

Spatial_Domain:

Bounding_Coordinates:

West_Bounding_Coordinate: -92.715714

East_Bounding_Coordinate: -92.640190

North_Bounding_Coordinate: 45.923466

South_Bounding_Coordinate: 45.318935

Keywords:

Theme:

Theme_Keyword_Thesaurus: SACN

Theme_Keyword: SACN

Access_Constraints: None

Use_Constraints: Redistribution needs permission from EFLHD/NPS

Point_of_Contact:

Contact_Information:

Contact_Person_Primary:

Contact_Person: Dan VanGilder

Contact_Organization: EFLHD

Contact_Position: GIS Coordinator

Contact_Address:

Address_Type: mailing and physical address

Address: 21400 Ridgetop Circle

City: Sterling

State_or_Province: Virginia

Postal_Code: 20166

Country: United States

Contact_Voice_Telephone: 703-404-6361

Contact_Electronic_Mail_Address: dvangilder@fhwa.dot.gov

Native_Data_Set_Environment:

Microsoft Windows 2000 Version 5.1 (Build 2600) Service Pack 2; ESRI ArcCatalog
8.3.0.800

Data_Quality_Information:

Attribute_Accuracy:

Attribute_Accuracy_Report: Good

Completeness_Report: Complete for routes

Lineage:

Source_Information:

Type_of_Source_Media: GPS

Spatial_Data_Organization_Information:

Direct_Spatial_Reference_Method: Vector

Point_and_Vector_Object_Information:

SDTS_Terms_Description:

SDTS_Point_and_Vector_Object_Type: String

Point_and_Vector_Object_Count: 11

Spatial_Reference_Information:

Horizontal_Coordinate_System_Definition:

Geographic:

Latitude_Resolution: 0.000000

Longitude_Resolution: 0.000000

Geographic_Coordinate_Units: Decimal degrees

Geodetic_Model:

Horizontal_Datum_Name: North American Datum of 1927

Ellipsoid_Name: Clarke 1866

Semi-major_Axis: 6378206.400000
Denominator_of_Flattening_Ratio: 294.978698

Entity_and_Attribute_Information:

Detailed_Description:

Entity_Type:

Entity_Type_Label: sacn_seg

Attribute:

Attribute_Label: FID

Attribute_Definition: Internal feature number.

Attribute_Definition_Source: ESRI

Attribute_Domain_Values:

Unrepresentable_Domain:

Sequential unique whole numbers that are automatically generated.

Attribute:

Attribute_Label: Shape

Attribute_Definition: Feature geometry.

Attribute_Definition_Source: ESRI

Attribute_Domain_Values:

Unrepresentable_Domain: Coordinates defining the features.

Attribute:

Attribute_Label: FNODE_

Attribute_Definition: Length of feature

Attribute_Definition_Source: ESRI

Attribute:

Attribute_Label: TNODE_

Attribute:

Attribute_Label: LPOLY_

Attribute_Definition: Route number

Attribute_Definition_Source: Route ID Meeting

Attribute:

Attribute_Label: RPOLY_

Attribute_Definition: Collected route length

Attribute_Definition_Source: ARAN Data Collection

Attribute:

Attribute_Label: LENGTH

Attribute_Definition:

Numeric PCR definition. Average PCR value based on programatic averaging of adjacent segments.

Attribute_Domain_Values:

Range_Domain:

Range_Domain_Minimum: 0

Range_Domain_Maximum: 100

Attribute:

Attribute_Label: SACN_SEG_

Attribute_Definition: Verbal PCR definition based on value in PCRAV field

Attribute_Domain_Values:

Enumerated_Domain:

Enumerated_Domain_Value: POOR

Enumerated_Domain_Value_Definition: PCR value <= 60
Enumerated_Domain:
Enumerated_Domain_Value: FAIR
Enumerated_Domain_Value_Definition: PCR value 61-84
Enumerated_Domain:
Enumerated_Domain_Value: GOOD
Enumerated_Domain_Value_Definition: PCR value 85-94
Enumerated_Domain:
Enumerated_Domain_Value: EXCELLENT
Enumerated_Domain_Value_Definition: PCR value 95-100

Attribute:

Attribute_Label: SACN_SEG_I
Attribute_Definition: Indicates whether feature has been edited for graphic purposes.
Attribute_Domain_Values:
Enumerated_Domain:
Enumerated_Domain_Value: 1
Enumerated_Domain_Value_Definition: Edit has been made to feature for graphic purposes
Enumerated_Domain:
Enumerated_Domain_Value: 0
Enumerated_Domain_Value_Definition: No edit made to feature.

Attribute:

Attribute_Label: ID

Attribute:

Attribute_Label: RTE_NO

Attribute:

Attribute_Label: BMP

Attribute:

Attribute_Label: EMP

Attribute:

Attribute_Label: PCR

Attribute:

Attribute_Label: PCR_RATE

Attribute:

Attribute_Label: RT_LENGTH

Attribute:

Attribute_Label: PCRMI

Attribute:

Attribute_Label: PCR_RATEMI

Attribute:

Attribute_Label: PCR_RATEAV

Attribute:

Attribute_Label: PCRAV

Attribute:

Attribute_Label: TSR_EDIT

Distribution_Information:

Resource_Description: Downloadable Data

Standard_Order_Process:

Digital_Form:
Digital_Transfer_Information:
Transfer_Size: 0.016

Metadata_Reference_Information:
Metadata_Date: 20060116
Metadata_Contact:
Contact_Information:
Contact_Organization_Primary:
Contact_Organization: EFLHD Sterling
Contact_Person: Dan VanGilder
Contact_Position: GIS Coordinator
Contact_Address:
Address_Type: mailing and physical address
City: Sterling
State_or_Province: Virginia
Postal_Code: 20166
Country: United States
Contact_Voice_Telephone: 703-404-6361
Contact_Electronic_Mail_Address: dvangilder@fhwa.dot.gov
Metadata_Standard_Name: FGDC Content Standards for Digital Geospatial Metadata
Metadata_Standard_Version: FGDC-STD-001-1998
Metadata_Time_Convention: local time
Metadata_Extensions:
Online_Linkage: <<http://www.esri.com/metadata/esriprof80.html>>
Profile_Name: ESRI Metadata Profile

Generated by [mp](#) version 2.7.33 on Mon Jan 16 10:57:15 2006

sacn_pkg_03

Metadata also available as

Metadata:

- [Identification Information](#)
 - [Data Quality Information](#)
 - [Spatial Data Organization Information](#)
 - [Spatial Reference Information](#)
 - [Entity and Attribute Information](#)
 - [Distribution Information](#)
 - [Metadata Reference Information](#)
-

Identification_Information:

Citation:

Citation_Information:

Originator: Eastern Federal Lands Highway Division

Publication_Date: Unknown

Title: sacn_pkg_03

Geospatial_Data_Presentation_Form: vector digital data

Online_Linkage: Not Available

Description:

Abstract: Parking Areas

Purpose: Road Inventory Program

Time_Period_of_Content:

Time_Period_Information:

Single_Date/Time:

Calendar_Date: 6/26/2003

Currentness_Reference: ground condition

Status:

Progress: Complete

Maintenance_and_Update_Frequency: As per RIP cycle

Spatial_Domain:

Bounding_Coordinates:

West_Bounding_Coordinate: -92.783610

East_Bounding_Coordinate: -91.147683

North_Bounding_Coordinate: 46.224907

South_Bounding_Coordinate: 45.318782

Keywords:

Theme:

Theme_Keyword_Thesaurus: SACN

Theme_Keyword: SACN

Access_Constraints: None

Use_Constraints: Redistribution needs permission from EFLHD/NPS

Point_of_Contact:

Contact_Information:

*Contact_Person_Primary:**Contact_Person:* Dan VanGilder*Contact_Organization:* EFLHD*Contact_Position:* GIS Coordinator*Contact_Address:**Address_Type:* mailing and physical address*Address:* 21400 Ridgetop Circle*City:* Sterling*State_or_Province:* Virginia*Postal_Code:* 20166*Country:* United States*Contact_Voice_Telephone:* 703-404-6361*Contact_Electronic_Mail_Address:* dvangilder@fhwa.dot.gov*Native_Data_Set_Environment:*

Microsoft Windows 2000 Version 5.1 (Build 2600) Service Pack 2; ESRI ArcCatalog
8.3.0.800

*Data_Quality_Information:**Attribute_Accuracy:**Attribute_Accuracy_Report:* Good*Completeness_Report:* Complete for parking areas*Lineage:**Source_Information:**Type_of_Source_Media:* GPS*Spatial_Data_Organization_Information:**Direct_Spatial_Reference_Method:* Vector*Point_and_Vector_Object_Information:**SDTS_Terms_Description:**SDTS_Point_and_Vector_Object_Type:* G-polygon*Point_and_Vector_Object_Count:* 16*Spatial_Reference_Information:**Horizontal_Coordinate_System_Definition:**Geographic:**Latitude_Resolution:* 0.000000*Longitude_Resolution:* 0.000000*Geographic_Coordinate_Units:* Decimal degrees*Geodetic_Model:**Horizontal_Datum_Name:* North American Datum of 1927*Ellipsoid_Name:* Clarke 1866*Semi-major_Axis:* 6378206.400000*Denominator_of_Flattening_Ratio:* 294.978698

*Entity_and_Attribute_Information:**Detailed_Description:**Entity_Type:**Entity_Type_Label:* sacn_pkg_03*Attribute:**Attribute_Label:* FID*Attribute_Definition:* Internal feature number.*Attribute_Definition_Source:* ESRI*Attribute_Domain_Values:**Unrepresentable_Domain:*

Sequential unique whole numbers that are automatically generated.

*Attribute:**Attribute_Label:* Shape*Attribute_Definition:* Feature geometry.*Attribute_Definition_Source:* ESRI*Attribute_Domain_Values:**Unrepresentable_Domain:* Coordinates defining the features.*Attribute:**Attribute_Label:* PARK_ALPHA*Attribute_Definition:* Park alpha code*Attribute_Definition_Source:* Route ID Meeting*Attribute:**Attribute_Label:* RTE_NO*Attribute_Definition:* Route number*Attribute_Definition_Source:* Route ID Meeting*Attribute:**Attribute_Label:* RTE_NAME*Attribute_Definition:* Route name*Attribute_Definition_Source:* Route ID Meeting*Attribute:**Attribute_Label:* FEATURE*Attribute:**Attribute_Label:* SURF_TYPE*Attribute_Definition:* Surface type of route*Attribute_Domain_Values:**Attribute:**Attribute_Label:* CONDITION*Attribute_Definition:* Condition rating for route*Attribute:**Attribute_Label:* PHOTOS*Attribute_Definition:* Photo filename associated with feature*Attribute:**Attribute_Label:* COMMENT*Attribute_Definition:* Field comment*Attribute:**Attribute_Label:* GPS_DATE*Attribute_Definition:* Date of GPS collection*Attribute:**Attribute_Label:* DATAFILE*Attribute:**Attribute_Label:* SQ_FT

Attribute_Definition: Feature area in square feet

Distribution_Information:

Resource_Description: Downloadable Data

Standard_Order_Process:

Digital_Form:

Digital_Transfer_Information:

Transfer_Size: 0.018

Metadata_Reference_Information:

Metadata_Date: 20060116

Metadata_Contact:

Contact_Information:

Contact_Organization_Primary:

Contact_Organization: EFLHD Sterling

Contact_Person: Dan VanGilder

Contact_Position: GIS Coordinator

Contact_Address:

Address_Type: mailing and physical address

Address: 21400 Ridgetop Circle

City: Sterling

State_or_Province: Virginia

Postal_Code: 20166

Country: United States

Contact_Voice_Telephone: 703-404-6361

Contact_Electronic_Mail_Address: dvangilder@fhwa.dot.gov

Metadata_Standard_Name: FGDC Content Standards for Digital Geospatial Metadata

Metadata_Standard_Version: FGDC-STD-001-1998

Metadata_Time_Convention: local time

Metadata_Extensions:

Online_Linkage: <<http://www.esri.com/metadata/esriprof80.html>>

Profile_Name: ESRI Metadata Profile

Generated by [mp](#) version 2.7.33 on Mon Jan 16 10:58:24 2006

sacn_pkg_03_map

Metadata also available as

Metadata:

- [Identification Information](#)
 - [Data Quality Information](#)
 - [Spatial Data Organization Information](#)
 - [Spatial Reference Information](#)
 - [Entity and Attribute Information](#)
 - [Distribution Information](#)
 - [Metadata Reference Information](#)
-

Identification_Information:

Citation:

Citation_Information:

Originator: Eastern Federal Lands Highway Division

Publication_Date: Unknown

Title: sacn_pkg_03_map

Geospatial_Data_Presentation_Form: vector digital data

Online_Linkage: Not Available

Description:

Abstract: Copy of Parking Areas

Purpose: Road Inventory Program

Supplemental_Information:

This shapefile is a copy of the source parking shapefile. The features are edited as needed for graphic purposes.

Time_Period_of_Content:

Time_Period_Information:

Single_Date/Time:

Calendar_Date: 6/26/2003

Currentness_Reference: ground condition

Status:

Progress: Complete

Maintenance_and_Update_Frequency: As per RIP cycle

Spatial_Domain:

Bounding_Coordinates:

West_Bounding_Coordinate: -92.783610

East_Bounding_Coordinate: -91.147683

North_Bounding_Coordinate: 46.224907

South_Bounding_Coordinate: 45.318782

Keywords:

Theme:

Theme_Keyword_Thesaurus: SACN

Theme_Keyword: SACN

Access_Constraints: None

Use_Constraints: Redistribution needs permission from EFLHD/NPS

Point_of_Contact:

Contact_Information:

Contact_Person_Primary:

Contact_Person: Dan VanGilder

Contact_Organization: EFLHD

Contact_Position: GIS Coordinator

Contact_Address:

Address_Type: mailing and physical address

Address: 21400 Ridgetop Circle

City: Sterling

State_or_Province: Virginia

Postal_Code: 20166

Country: United States

Contact_Voice_Telephone: 703-404-6361

Contact_Electronic_Mail_Address: dvangilder@fhwa.dot.gov

Native_Data_Set_Environment:

Microsoft Windows 2000 Version 5.1 (Build 2600) Service Pack 2; ESRI ArcCatalog 8.3.0.800

Data_Quality_Information:

Attribute_Accuracy:

Attribute_Accuracy_Report: Good

Completeness_Report: Complete for parking areas

Lineage:

Source_Information:

Type_of_Source_Media: GPS

Spatial_Data_Organization_Information:

Direct_Spatial_Reference_Method: Vector

Point_and_Vector_Object_Information:

SDTS_Terms_Description:

SDTS_Point_and_Vector_Object_Type: G-polygon

Point_and_Vector_Object_Count: 16

Spatial_Reference_Information:

Horizontal_Coordinate_System_Definition:

Geographic:

Latitude_Resolution: 0.000000

Longitude_Resolution: 0.000000

Geographic_Coordinate_Units: Decimal degrees

Geodetic_Model:

Horizontal_Datum_Name: North American Datum of 1927

Ellipsoid_Name: Clarke 1866

Semi-major_Axis: 6378206.400000

Denominator_of_Flattening_Ratio: 294.978698

Entity_and_Attribute_Information:

Detailed_Description:

Entity_Type:

Entity_Type_Label: sacn_pkg_03_map

Attribute:

Attribute_Label: FID

Attribute_Definition: Internal feature number.

Attribute_Definition_Source: ESRI

Attribute_Domain_Values:

Unrepresentable_Domain:

Sequential unique whole numbers that are automatically generated.

Attribute:

Attribute_Label: Shape

Attribute_Definition: Feature geometry.

Attribute_Definition_Source: ESRI

Attribute_Domain_Values:

Unrepresentable_Domain: Coordinates defining the features.

Attribute:

Attribute_Label: PARK_ALPHA

Attribute_Definition: Park alpha code

Attribute_Definition_Source: Route ID Meeting

Attribute:

Attribute_Label: RTE_NO

Attribute_Definition: Route number

Attribute_Definition_Source: Route ID Meeting

Attribute:

Attribute_Label: RTE_NAME

Attribute_Definition: Route name

Attribute_Definition_Source: Route ID Meeting

Attribute:

Attribute_Label: FEATURE

Attribute:

Attribute_Label: SURF_TYPE

Attribute_Definition: Surface type of route

Attribute_Domain_Values:

Attribute:

Attribute_Label: CONDITION

Attribute_Definition: Condition rating for route

Attribute:

Attribute_Label: PHOTOS

Attribute_Definition: Photo filename associated with feature

Attribute:

Attribute_Label: COMMENT

Attribute_Definition: Field comment

Attribute:

Attribute_Label: GPS_DATE

Attribute_Definition: Date of GPS collection

*Attribute:**Attribute_Label:* DATAFILE*Attribute:**Attribute_Label:* SQ_FT*Attribute_Definition:* Feature area in square feet

*Distribution_Information:**Resource_Description:* Downloadable Data*Standard_Order_Process:**Digital_Form:**Digital_Transfer_Information:**Transfer_Size:* 0.018

*Metadata_Reference_Information:**Metadata_Date:* 20060116*Metadata_Contact:**Contact_Information:**Contact_Organization_Primary:**Contact_Organization:* EFLHD Sterling*Contact_Person:* Dan VanGilder*Contact_Position:* GIS Coordinator*Contact_Address:**Address_Type:* mailing and physical address*Address:* 21400 Ridgetop Circle*City:* Sterling*State_or_Province:* Virginia*Postal_Code:* 20166*Country:* United States*Contact_Voice_Telephone:* 703-404-6361*Contact_Electronic_Mail_Address:* dvangilder@fhwa.dot.gov*Metadata_Standard_Name:* FGDC Content Standards for Digital Geospatial Metadata*Metadata_Standard_Version:* FGDC-STD-001-1998*Metadata_Time_Convention:* local time*Metadata_Extensions:**Online_Linkage:* <<http://www.esri.com/metadata/esriprof80.html>>*Profile_Name:* ESRI Metadata Profile

Generated by [mp](#) version 2.7.33 on Mon Jan 16 10:58:09 2006

sacn_nonnps

Metadata also available as

Metadata:

- [Identification Information](#)
 - [Data Quality Information](#)
 - [Spatial Data Organization Information](#)
 - [Spatial Reference Information](#)
 - [Entity and Attribute Information](#)
 - [Distribution Information](#)
 - [Metadata Reference Information](#)
-

Identification_Information:

Citation:

Citation_Information:

Originator: The TSR Group

Publication_Date: 2005

Title: sacn_nonnps

Geospatial_Data_Presentation_Form: vector digital data

Online_Linkage: Not Available

Description:

Abstract: non-NPS roads

Purpose: Road Inventory Program

Supplemental_Information:

Data created by The TSR Group from heads-up digitizing of roads representing non-NPS roads for graphic purposes

Time_Period_of_Content:

Time_Period_Information:

Single_Date/Time:

Calendar_Date: 2005

Currentness_Reference: ground condition

Status:

Progress: Complete

Maintenance_and_Update_Frequency: As per RIP cycle

Spatial_Domain:

Bounding_Coordinates:

West_Bounding_Coordinate: -92.787456

East_Bounding_Coordinate: -91.148038

North_Bounding_Coordinate: 46.226442

South_Bounding_Coordinate: 45.318779

Keywords:

Theme:

Theme_Keyword_Thesaurus: SACN

Theme_Keyword: SACN

Access_Constraints: None

Use_Constraints: Redistribution needs permission from EFLHD/NPS

Point_of_Contact:

Contact_Information:

Contact_Person_Primary:

Contact_Person: Dan VanGilder

Contact_Organization: EFLHD

Contact_Position: GIS Coordinator

Contact_Address:

Address_Type: mailing and physical address

Address: 21400 Ridgetop Circle

City: Sterling

State_or_Province: Virginia

Postal_Code: 20166

Country: United States

Contact_Voice_Telephone: 703-404-6361

Contact_Electronic_Mail_Address: dvangilder@fhwa.dot.gov

Native_Data_Set_Environment:

Microsoft Windows 2000 Version 5.1 (Build 2600) Service Pack 2; ESRI ArcCatalog 8.3.0.800

Data_Quality_Information:

Attribute_Accuracy:

Attribute_Accuracy_Report: Good

Completeness_Report: Complete for non-NPS roads

Lineage:

Source_Information:

Type_of_Source_Media: Heads-up digitized

Spatial_Data_Organization_Information:

Direct_Spatial_Reference_Method: Vector

Point_and_Vector_Object_Information:

SDTS_Terms_Description:

SDTS_Point_and_Vector_Object_Type: String

Point_and_Vector_Object_Count: 10

Spatial_Reference_Information:

Horizontal_Coordinate_System_Definition:

Geographic:

Latitude_Resolution: 0.000000

Longitude_Resolution: 0.000000

Geographic_Coordinate_Units: Decimal degrees

Geodetic_Model:

Horizontal_Datum_Name: North American Datum of 1927

Ellipsoid_Name: Clarke 1866

Semi-major_Axis: 6378206.400000

Denominator_of_Flattening_Ratio: 294.978698

Entity_and_Attribute_Information:

Detailed_Description:

Entity_Type:

Entity_Type_Label: sacn_nonnps

Attribute:

Attribute_Label: FID

Attribute_Definition: Internal feature number.

Attribute_Definition_Source: ESRI

Attribute_Domain_Values:

Unrepresentable_Domain:

Sequential unique whole numbers that are automatically generated.

Attribute:

Attribute_Label: Shape

Attribute_Definition: Feature geometry.

Attribute_Definition_Source: ESRI

Attribute_Domain_Values:

Unrepresentable_Domain: Coordinates defining the features.

Attribute:

Attribute_Label: Id

Attribute_Definition: Name of road if available

Attribute:

Attribute_Label: Name

Distribution_Information:

Resource_Description: Downloadable Data

Standard_Order_Process:

Digital_Form:

Digital_Transfer_Information:

Transfer_Size: 0.008

Metadata_Reference_Information:

Metadata_Date: 20060116

Metadata_Contact:

Contact_Information:

Contact_Organization_Primary:

Contact_Organization: EFLHD Sterling

Contact_Person: Dan VanGilder

Contact_Position: GIS Coordinator

Contact_Address:

Address_Type: mailing and physical address

Address: 21400 Ridgetop Circle

City: Sterling

State_or_Province: Virginia

Postal_Code: 20166

Country: United States

Contact_Voice_Telephone: 703-404-6361

Contact_Electronic_Mail_Address: dvangilder@fhwa.dot.gov

Metadata_Standard_Name: FGDC Content Standards for Digital Geospatial Metadata

Metadata_Standard_Version: FGDC-STD-001-1998

Metadata_Time_Convention: local time

Metadata_Extensions:

Online_Linkage: <<http://www.esri.com/metadata/esriprof80.html>>

Profile_Name: ESRI Metadata Profile

Generated by [mp](#) version 2.7.33 on Mon Jan 16 10:57:29 2006

sacn_mi_pt

Metadata also available as

Metadata:

- [Identification Information](#)
 - [Data Quality Information](#)
 - [Spatial Data Organization Information](#)
 - [Spatial Reference Information](#)
 - [Entity and Attribute Information](#)
 - [Distribution Information](#)
 - [Metadata Reference Information](#)
-

Identification_Information:

Citation:

Citation_Information:

Originator: The TSR Group

Publication_Date: 2005

Title: sacn_mi_pt

Geospatial_Data_Presentation_Form: vector digital data

Online_Linkage: Not Available

Description:

Abstract: Mile Points

Purpose: Road Inventory Program

Supplemental_Information:

Data created by The TSR Group from GPS coordinates provided in the PMS_20 table. All attributes found in the PMS_20 table are found on the miles points.

Time_Period_of_Content:

Time_Period_Information:

Single_Date/Time:

Calendar_Date: 2005

Currentness_Reference: ground condition

Status:

Progress: Complete

Maintenance_and_Update_Frequency: Not Available

Spatial_Domain:

Bounding_Coordinates:

West_Bounding_Coordinate: -92.712204

East_Bounding_Coordinate: -92.642303

North_Bounding_Coordinate: 45.920925

South_Bounding_Coordinate: 45.322048

Keywords:

Theme:

Theme_Keyword_Thesaurus: SACN

Theme_Keyword: SACN

Access_Constraints: None

Use_Constraints: Redistribution needs permission from EFLHD/NPS

Point_of_Contact:

Contact_Information:

Contact_Person_Primary:

Contact_Person: Dan VanGilder

Contact_Organization: EFLHD Sterling

Contact_Position: GIS Coordinator

Contact_Address:

Address_Type: mailing and physical address

Address: 21400 Ridgetop Circle

City: Sterling

State_or_Province: Virginia

Postal_Code: 20166

Country: United States

Contact_Voice_Telephone: 703-404-6361

Contact_Electronic_Mail_Address: dvangilder@fhwa.dot.gov

Native_Data_Set_Environment:

Microsoft Windows 2000 Version 5.1 (Build 2600) Service Pack 2; ESRI ArcCatalog 8.3.0.800

Data_Quality_Information:

Attribute_Accuracy:

Attribute_Accuracy_Report: Good

Completeness_Report: Complete for mile points

Lineage:

Source_Information:

Type_of_Source_Media: GPS

Spatial_Data_Organization_Information:

Direct_Spatial_Reference_Method: Vector

Point_and_Vector_Object_Information:

SDTS_Terms_Description:

SDTS_Point_and_Vector_Object_Type: Entity point

Point_and_Vector_Object_Count: 2

Spatial_Reference_Information:

Horizontal_Coordinate_System_Definition:

Geographic:

Latitude_Resolution: 0.000000

Longitude_Resolution: 0.000000

Geographic_Coordinate_Units: Decimal degrees

Geodetic_Model:

Horizontal_Datum_Name: North American Datum of 1927

Ellipsoid_Name: Clarke 1866

Semi-major_Axis: 6378206.400000

Denominator_of_Flattening_Ratio: 294.978698

Entity_and_Attribute_Information:

Detailed_Description:

Entity_Type:

Entity_Type_Label: sacn_mi_pt

Attribute:

Attribute_Label: FID

Attribute_Definition: Internal feature number.

Attribute_Definition_Source: ESRI

Attribute_Domain_Values:

Unrepresentable_Domain:

Sequential unique whole numbers that are automatically generated.

Attribute:

Attribute_Label: Shape

Attribute_Definition: Feature geometry.

Attribute_Definition_Source: ESRI

Attribute_Domain_Values:

Unrepresentable_Domain: Coordinates defining the features.

Attribute:

Attribute_Label: RIP_CYCLE

Attribute_Definition: 3, for data collection cycle 3

Attribute_Definition_Source: Route ID Meeting

Attribute:

Attribute_Label: STATE

Attribute_Definition: State where route is located

Attribute_Definition_Source: Route ID Meeting

Attribute:

Attribute_Label: PARK_ALPHA

Attribute_Definition: Park alpha code

Attribute_Definition_Source: Route ID Meeting

Attribute:

Attribute_Label: PARK_NO

Attribute_Definition: Park numeric code

Attribute_Definition_Source: Route ID Meeting

Attribute:

Attribute_Label: RTE_NO

Attribute_Definition: Route number

Attribute_Definition_Source: Route ID Meeting

Attribute:

Attribute_Label: FUNCT_CLAS

Attribute_Definition: Route functional class

Attribute_Definition_Source: Route ID Meeting

Attribute:

Attribute_Label: DIRECTION

Attribute_Definition: Survey lane: PRI (primary) or OPP (opposite)

Attribute_Definition_Source: Route ID Meeting

Attribute:

Attribute_Label: BEG_MP

Attribute_Definition: MP at end of road interval described by database record

Attribute_Definition_Source: Contractor Post-processing

Attribute:

Attribute_Label: END_MP

Attribute_Definition: MP at end of road interval described by database record

Attribute_Definition_Source: Contractor Post-processing

Attribute:

Attribute_Label: INT_LENGTH

Attribute_Definition: Length of road interval as aggregated from data table

Attribute_Definition_Source: Contractor Post-processing

Attribute:

Attribute_Label: RTE_LENGTH

Attribute_Definition: Collected route length

Attribute_Definition_Source: ARAN Data Collection

Attribute:

Attribute_Label: NO_LANES

Attribute_Definition: Number of lanes in route

Attribute_Definition_Source: ARAN Data Collection

Attribute:

Attribute_Label: LANE_NO

Attribute_Definition: Data collection lane

Attribute_Definition_Source: Contractor Post-processing

Attribute:

Attribute_Label: WX_LANE_WI

Attribute_Definition: WiseCrax (crack detection software) analysis width

Attribute_Definition_Source: Contractor Post-processing

Attribute:

Attribute_Label: LANE_WIDTH

Attribute_Definition: Width of lane

Attribute_Definition_Source: Contractor Post-processing

Attribute:

Attribute_Label: PAVE_WIDTH

Attribute_Definition: Full pavement width

Attribute_Definition_Source: Contractor Post-processing

Attribute:

Attribute_Label: SHLD_WIDTH

Attribute_Definition: Left shoulder width

Attribute_Definition_Source: Contractor Post-processing

Attribute:

Attribute_Label: SHLD_WID_1

Attribute_Definition: Right shoulder width

Attribute_Definition_Source: Contractor Post-processing

Attribute:

Attribute_Label: SHLD_COND_

Attribute_Definition: Left shoulder condition

Attribute_Definition_Source: ARAN Data Collection

Attribute:

Attribute_Label: SHLD_COND1

Attribute_Definition: Right shoulder condition

Attribute_Definition_Source: ARAN Data Collection

Attribute:

Attribute_Label: DRAIN_COND
Attribute_Definition: Left drainage condition
Attribute_Definition_Source: ARAN Data Collection

Attribute:

Attribute_Label: DRAIN_CO_1
Attribute_Definition: Right drainage condition
Attribute_Definition_Source: ARAN Data Collection

Attribute:

Attribute_Label: SURF_TYPE
Attribute_Definition: Surface type of route
Attribute_Definition_Source: ARAN Data Collection

Attribute:

Attribute_Label: PCR
Attribute_Definition: Pavement Condition Rating
Attribute_Definition_Source: Contractor Post-processing

Attribute:

Attribute_Label: RCI
Attribute_Definition: Roughness Condition Index; -1 if invalid IRI
Attribute_Definition_Source: Contractor Post-processing

Attribute:

Attribute_Label: SCR
Attribute_Definition: Surface Condition Rating
Attribute_Definition_Source: Contractor Post-processing

Attribute:

Attribute_Label: IRI_AVG
Attribute_Definition: Average IRI
Attribute_Definition_Source: Contractor Post-processing

Attribute:

Attribute_Label: IRI_SD
Attribute_Definition: IRI Standard Deviation
Attribute_Definition_Source: Contractor Post-processing

Attribute:

Attribute_Label: IRI_L
Attribute_Definition: Left wheel path IRI
Attribute_Definition_Source: ARAN Data Collection

Attribute:

Attribute_Label: IRI_R
Attribute_Definition: Right wheel path IRI
Attribute_Definition_Source: ARAN Data Collection

Attribute:

Attribute_Label: IRI_FLAG
Attribute_Definition: -1 if invalid IRI data
Attribute_Definition_Source: Contractor Post-processing

Attribute:

Attribute_Label: RUT_INDEX
Attribute_Definition: Rut index
Attribute_Definition_Source: Contractor Post-processing

Attribute:

Attribute_Label: RUT_AVG
Attribute_Definition: Average rut depth of both wheelpaths
Attribute_Definition_Source: Contractor Post-processing

*Attribute:**Attribute_Label:* RUT_MAX*Attribute_Definition:* Maximum rut depth of both wheelpaths*Attribute_Definition_Source:* Contractor Post-processing*Attribute:**Attribute_Label:* RUT_SD*Attribute_Definition:* Rut depth standard deviation*Attribute_Definition_Source:* Contractor Post-processing*Attribute:**Attribute_Label:* RUT_LOW*Attribute_Definition:*

Percent of low severity ruts (on a 0-200% scale) in both wheelpaths

Attribute_Definition_Source: Contractor Post-processing*Attribute:**Attribute_Label:* RUT_MED*Attribute_Definition:*

Percent of medium severity ruts (on a 0-200% scale) in both wheelpaths

Attribute_Definition_Source: Contractor Post-processing*Attribute:**Attribute_Label:* RUT_HI*Attribute_Definition:*

Percent of high severity ruts (on a 0-200% scale) in both wheelpaths

Attribute_Definition_Source: Contractor Post-processing*Attribute:**Attribute_Label:* XFALL*Attribute_Definition:* Cross fall at start of road interval*Attribute_Definition_Source:* ARAN Data Collection*Attribute:**Attribute_Label:* GRADE*Attribute_Definition:* Grade at start of road interval*Attribute_Definition_Source:* ARAN Data Collection*Attribute:**Attribute_Label:* AC_INDEX*Attribute_Definition:* Alligator cracking index*Attribute_Definition_Source:* Contractor Post-processing*Attribute:**Attribute_Label:* AC_LOW*Attribute_Definition:*

Percent of WiseCrax measured lane area with low-severity alligator cracking

Attribute_Definition_Source: Contractor Post-processing*Attribute:**Attribute_Label:* AC_MED*Attribute_Definition:*

Percent of WiseCrax measured lane area with medium-severity alligator cracking

Attribute_Definition_Source: Contractor Post-processing*Attribute:**Attribute_Label:* AC_HI*Attribute_Definition:*

Percent of WiseCrax measured lane area with high-severity alligator cracking

Attribute_Definition_Source: Contractor Post-processing

*Attribute:**Attribute_Label:* LC_INDEX*Attribute_Definition:* Longitudinal cracking index*Attribute_Definition_Source:* Contractor Post-processing*Attribute:**Attribute_Label:* LC_LOW*Attribute_Definition:*

Low-severity longitudinal cracking in lane as a percentage of road interval length

Attribute_Definition_Source: Contractor Post-processing*Attribute:**Attribute_Label:* LC_MED*Attribute_Definition:*

Medium-severity longitudinal cracking in lane as a percentage of road interval length

Attribute_Definition_Source: Contractor Post-processing*Attribute:**Attribute_Label:* LC_HI*Attribute_Definition:*

High-severity longitudinal cracking in lane as a percentage of road interval length

Attribute_Definition_Source: Contractor Post-processing*Attribute:**Attribute_Label:* TC_INDEX*Attribute_Definition:* Transverse cracking index*Attribute_Definition_Source:* Contractor Post-processing*Attribute:**Attribute_Label:* TC_LOW*Attribute_Definition:*

Count of low-severity transverse cracks, where one crack unit equals the WiseCrax measured land width

Attribute_Definition_Source: Contractor Post-processing*Attribute:**Attribute_Label:* TC_MED*Attribute_Definition:*

Count of medium-severity transverse cracks, where one crack unit equals the WiseCrax measured land width

Attribute_Definition_Source: Contractor Post-processing*Attribute:**Attribute_Label:* TC_HI*Attribute_Definition:*

Count of high-severity transverse cracks, where one crack unit equals the WiseCrax measured land width

Attribute_Definition_Source: Contractor Post-processing*Attribute:**Attribute_Label:* PATCH_INDE*Attribute_Definition:* Patching index*Attribute_Definition_Source:* Contractor Post-processing*Attribute:**Attribute_Label:* PATCHING*Attribute_Definition:* Percent of WiseCrax measured lane area affected by patching

Attribute_Definition_Source: Contractor Post-processing
Attribute:
Attribute_Label: GPS_LAT
Attribute_Definition: Latitude coordinate
Attribute_Definition_Source: ARAN Data Collection
Attribute:
Attribute_Label: GPS_LON
Attribute_Definition: Longitude coordinate
Attribute_Definition_Source: ARAN Data Collection
Attribute:
Attribute_Label: GPS_ELEV
Attribute_Definition: Elevation
Attribute_Definition_Source: ARAN Data Collection
Attribute:
Attribute_Label: GPS_MODE
Attribute_Definition: GPS mode during collection
Attribute_Definition_Source: ARAN Data Collection
Attribute:
Attribute_Label: VIDEO
Attribute_Definition: Removable USB video hard drive number
Attribute_Definition_Source: Contractor Post-processing
Attribute:
Attribute_Label: IMAGE
Attribute_Definition: Filename of .jpg image showing road interval
Attribute_Definition_Source: Contractor Post-processing
Attribute:
Attribute_Label: SPEED
Attribute_Definition: Average ARAN speed during data collection
Attribute_Definition_Source: ARAN Data Collection
Attribute:
Attribute_Label: BRIDGE_FL
Attribute_Definition: Flag indicating presence of bridge in interval
Attribute_Definition_Source: ARAN Data Collection
Attribute:
Attribute_Label: CONSTR_FL
Attribute_Definition: Flag indicating construction in interval
Attribute_Definition_Source: ARAN Data Collection
Attribute:
Attribute_Label: LANEDEV_FL
Attribute_Definition: Flag indicating lane deviation in interval
Attribute_Definition_Source: ARAN Data Collection
Attribute:
Attribute_Label: DATE
Attribute_Definition: Data collection date
Attribute_Definition_Source: ARAN Data Collection
Attribute:
Attribute_Label: NODISTRESS
Attribute_Definition: Flag indicating absence of pavement distress
Attribute_Definition_Source: Contractor Post-processing
Attribute:
Attribute_Label: FILENAME

Attribute_Definition: Filename of raw data files
Attribute_Definition_Source: ARAN Data Collection

Attribute:

Attribute_Label: SECTION
Attribute_Definition: route section ID
Attribute_Definition_Source: Route ID Meeting / ARAN Data Collection

Attribute:

Attribute_Label: FKEY
Attribute_Definition: Unique record ID
Attribute_Definition_Source: Contractor Post-processing

Attribute:

Attribute_Label: VISI_FROM
Attribute_Definition: Raw MP of first video frame in section
Attribute_Definition_Source: Contractor Post-processing

Attribute:

Attribute_Label: VISI_TO
Attribute_Definition: Raw MP of last video frame in section
Attribute_Definition_Source: Contractor Post-processing

Attribute:

Attribute_Label: IDKEY
Attribute_Definition: Unique record ID used by VisiData
Attribute_Definition_Source: Contractor Post-processing

Attribute:

Attribute_Label: MP_REF
Attribute_Definition: Range of mileage to play in VisiData
Attribute_Definition_Source: Contractor Post-processing

Distribution_Information:

Resource_Description: Downloadable Data

Standard_Order_Process:

Digital_Form:

Digital_Transfer_Information:

Transfer_Size: 0.030

Metadata_Reference_Information:

Metadata_Date: 20060116

Metadata_Contact:

Contact_Information:

Contact_Organization_Primary:

Contact_Organization: EFLHD Sterling

Contact_Person: Dan VanGilder

Contact_Position: GIS Coordinator

Contact_Address:

Address_Type: mailing and physical address

Address: 21400 Ridgetop Circle

City: Sterling

State_or_Province: Virginia

Postal_Code: 20166

Country: United States

Contact_Voice_Telephone: 703-404-6361

Contact_Electronic_Mail_Address: dvangilder@fhwa.dot.gov

Metadata_Standard_Name: FGDC Content Standards for Digital Geospatial Metadata

Metadata_Standard_Version: FGDC-STD-001-1998

Metadata_Time_Convention: local time

Metadata_Extensions:

Online_Linkage: <<http://www.esri.com/metadata/esriprof80.html>>

Profile_Name: ESRI Metadata Profile

Generated by [mp](#) version 2.7.33 on Mon Jan 16 10:57:43 2006

sacn_mi

Metadata also available as

Metadata:

- [Identification Information](#)
 - [Data Quality Information](#)
 - [Spatial Data Organization Information](#)
 - [Spatial Reference Information](#)
 - [Entity and Attribute Information](#)
 - [Distribution Information](#)
 - [Metadata Reference Information](#)
-

Identification_Information:

Citation:

Citation_Information:

Originator: The TSR Group

Publication_Date: 2005

Title: sacn_mi

Geospatial_Data_Presentation_Form: vector digital data

Online_Linkage: Not Available

Description:

Abstract: Routes

Purpose: Road Inventory Program

Supplemental_Information:

Data created by The TSR Group from GPS coordinates provided in the PMS_20 table. The shapefile is processed to aggregate adjacent segments with the same PCR rating provided in the PMS_mile table.

Time_Period_of_Content:

Time_Period_Information:

Single_Date/Time:

Calendar_Date: 2005

Currentness_Reference: ground condition

Status:

Progress: Complete

Maintenance_and_Update_Frequency: As per RIP cycle

Spatial_Domain:

Bounding_Coordinates:

West_Bounding_Coordinate: -92.715714

East_Bounding_Coordinate: -92.640190

North_Bounding_Coordinate: 45.923466

South_Bounding_Coordinate: 45.318878

Keywords:

Theme:

Theme_Keyword_Thesaurus: SACN

Theme_Keyword: SACN

Access_Constraints: None

Use_Constraints: Redistribution needs permission from EFLHD/NPS

Point_of_Contact:

Contact_Information:

Contact_Person_Primary:

Contact_Person: Dan VanGilder

Contact_Organization: EFLHD

Contact_Position: GIS Coordinator

Contact_Address:

Address_Type: mailing and physical address

Address: 21400 Ridgetop Circle

City: Sterling

State_or_Province: Virginia

Postal_Code: 20166

Country: United States

Contact_Voice_Telephone: 703-404-6361

Contact_Electronic_Mail_Address: dvangilder@fhwa.dot.gov

Native_Data_Set_Environment:

Microsoft Windows 2000 Version 5.1 (Build 2600) Service Pack 2; ESRI ArcCatalog
8.3.0.800

Data_Quality_Information:

Attribute_Accuracy:

Attribute_Accuracy_Report: Good

Completeness_Report: Complete for routes

Lineage:

Source_Information:

Type_of_Source_Media: GPS

Spatial_Data_Organization_Information:

Direct_Spatial_Reference_Method: Vector

Point_and_Vector_Object_Information:

SDTS_Terms_Description:

SDTS_Point_and_Vector_Object_Type: String

Point_and_Vector_Object_Count: 2

Spatial_Reference_Information:

Horizontal_Coordinate_System_Definition:

Geographic:

Latitude_Resolution: 0.000000

Longitude_Resolution: 0.000000

Geographic_Coordinate_Units: Decimal degrees

Geodetic_Model:

Horizontal_Datum_Name: North American Datum of 1927

Ellipsoid_Name: Clarke 1866

Semi-major_Axis: 6378206.400000
Denominator_of_Flattening_Ratio: 294.978698

Entity_and_Attribute_Information:

Detailed_Description:

Entity_Type:

Entity_Type_Label: sacn_mi

Attribute:

Attribute_Label: FID

Attribute_Definition: Internal feature number.

Attribute_Definition_Source: ESRI

Attribute_Domain_Values:

Unrepresentable_Domain:

Sequential unique whole numbers that are automatically generated.

Attribute:

Attribute_Label: Shape

Attribute_Definition: Feature geometry.

Attribute_Definition_Source: ESRI

Attribute_Domain_Values:

Unrepresentable_Domain: Coordinates defining the features.

Attribute:

Attribute_Label: FNODE_

Attribute_Definition: Length of feature

Attribute_Definition_Source: ESRI

Attribute:

Attribute_Label: TNODE_

Attribute:

Attribute_Label: LPOLY_

Attribute_Definition: Route number

Attribute_Definition_Source: Route ID Meeting

Attribute:

Attribute_Label: RPOLY_

Attribute_Definition: Collected route length

Attribute_Definition_Source: ARAN Data Collection

Attribute:

Attribute_Label: LENGTH

Attribute_Definition: Numeric PCR definition

Attribute_Domain_Values:

Range_Domain:

Range_Domain_Minimum: 0

Range_Domain_Maximum: 100

Attribute:

Attribute_Label: SACN_MI_

Attribute_Definition: Verbal PCR definition

Attribute_Domain_Values:

Enumerated_Domain:

Enumerated_Domain_Value: POOR

Enumerated_Domain_Value_Definition: PCR value <= 60

Enumerated_Domain:

Enumerated_Domain_Value: FAIR

Enumerated_Domain_Value_Definition: PCR value 61-84

Enumerated_Domain:

Enumerated_Domain_Value: GOOD

Enumerated_Domain_Value_Definition: PCR value 85-94

Enumerated_Domain:

Enumerated_Domain_Value: EXCELLENT

Enumerated_Domain_Value_Definition: PCR value 95-100

Attribute:

Attribute_Label: SACN_MI_ID

Attribute_Definition: Indicates whether feature has been edited for graphic purposes.

Attribute_Domain_Values:

Enumerated_Domain:

Enumerated_Domain_Value: 1

Enumerated_Domain_Value_Definition: Edit has been made to feature for graphic purposes

Enumerated_Domain:

Enumerated_Domain_Value: 0

Enumerated_Domain_Value_Definition: No edit made to feature.

Attribute:

Attribute_Label: ID

Attribute:

Attribute_Label: RTE_NO

Attribute:

Attribute_Label: BMP

Attribute:

Attribute_Label: EMP

Attribute:

Attribute_Label: PCR

Attribute:

Attribute_Label: PCR_RATE

Attribute:

Attribute_Label: RT_LENGTH

Attribute:

Attribute_Label: PCRMI

Attribute:

Attribute_Label: PCR_RATEMI

Attribute:

Attribute_Label: PCR_RATEAV

Attribute:

Attribute_Label: PCRAV

Attribute:

Attribute_Label: TSR_EDIT

Distribution_Information:

Resource_Description: Downloadable Data

Standard_Order_Process:

Digital_Form:

Digital_Transfer_Information:

Transfer_Size: 0.016

Metadata_Reference_Information:

Metadata_Date: 20060116

Metadata_Contact:

Contact_Information:

Contact_Organization_Primary:

Contact_Organization: EFLHD Sterling

Contact_Person: Dan VanGilder

Contact_Position: GIS Coordinator

Contact_Address:

Address_Type: mailing and physical address

City: Sterling

State_or_Province: Virginia

Postal_Code: 20166

Country: United States

Contact_Voice_Telephone: 703-404-6361

Contact_Electronic_Mail_Address: dvangilder@fhwa.dot.gov

Metadata_Standard_Name: FGDC Content Standards for Digital Geospatial Metadata

Metadata_Standard_Version: FGDC-STD-001-1998

Metadata_Time_Convention: local time

Metadata_Extensions:

Online_Linkage: <<http://www.esri.com/metadata/esriprof80.html>>

Profile_Name: ESRI Metadata Profile

Generated by [mp](#) version 2.7.33 on Mon Jan 16 10:57:55 2006