



Federal Lands Highway Road Inventory Program

Road Inventory and Condition Assessment



American Memorial Park
AMME - 8780

Cycle 5 Report

Prepared By: Federal Highway Administration
Road Inventory Program (RIP)
Data Collection Date: 01/2012
Report Date: 03/2012

**American Memorial Park
in
The Commonwealth of the Northern
Mariana Islands - Saipan**





TABLE OF CONTENTS

<u>SECTION</u>	<u>PAGE</u>
1. INTRODUCTION	1 - 1
2. PARK ROUTE INVENTORY Route IDs, Subcomponents & Changes Report (As Applicable)	2 - 1
3. PARK SUMMARY INFORMATION	3 - 1
4. PARK ROUTE LOCATION MAPS Route Location Key Map Route Location Area Map	4 - 1 4 - 2
5. PAVED ROUTE CONDITION RATING SHEETS	5 - 1
6. MANUALLY RATED PAVED ROUTE CONDITION RATING SHEETS MRR Pages	6 - 1
7. PARKING AREA CONDITION RATING SHEETS Paved Parking Area Pages	7 - 1
8. PARKWIDE / ROUTE MAINTENANCE FEATURES SUMMARIES	8 - 1
9. ROUTE MAINTENANCE FEATURES ROAD LOGS	9 - 1
10. APPENDIX Glossary of Terms and Abbreviations GPS on Manually Rated Routes Geodatabase Background and Metadata	10 - 1 10 - 2 10 - 3

Section 1 Introduction



American Memorial Park



INTRODUCTION

The Federal Highway Administration, (FHWA), in the mid 1970s, was charged with the task of identifying surface condition deficiencies and corrective priorities on National Park Service (NPS) roads and parkways. Additionally, FHWA was tasked with establishing an integrated maintenance features inventory, locating features such as culverts, guardrails, and signs, among others, along NPS roads and parkways. As a result, in 1976 the NPS and FHWA entered into an MOA (Memorandum Of Agreement) which established the RIP (Road Inventory Program). This MOA was terminated and revised in 1980 to establish a new MOA aiming to update RIP data and develop a long-range program to improve and maintain NPS roads to designated condition standards and establish a maintenance management program.

The FHWA completed this initial phase of the RIP in the early 1980s. As a result of this effort, each NPS site included in the study received a RIP Report known as the “Brown Book” which included the information collected during this first RIP phase.

In the 1990s, the effort was again renewed to update and maintain the RIP data. By this time the computer age was upon us and a process was employed that relied heavily on electronic data collection and computer technology. A cyclical program was developed and the RIP completed two cycles of data collection from 1994 to 2001. Cycle 1, starting in 1994, was conducted in 44 “large parks” (parks containing 10 or more paved route miles). Cycle 2 began in 1997 and comprised 79 large parks and 5 small parks totaling 4,874 paved route miles. Each of these parks received a RIP Report known as the “Blue Book”. Cycle 3, from 2001 to 2004, was conducted in all parks, large and small, that contained any paved routes, including parking areas and, again, each park received a RIP Report and associated electronic files.

Cycle 4 was initiated in the spring of 2006 covering 86 large parks and several associated small parks consisting of 5,553 paved route miles and 6,232 paved parking areas. Data collection has been completed for Cycle 4 and all data has been delivered to the NPS.

In 2005, the FHWA began implementing the use of a Pavement Management System (PMS) to assist the NPS in prioritizing Pavement Maintenance and Rehabilitation activities. The PMS used by FHWA is the Highway Pavement Management Application (HPMA) and this software has the ability to store inventory and condition data from RIP and forecast future performance using prediction models. Outputs include performance and condition reports at the National, Regional, Park, or Route level. A regional prioritized list and optimization have been produced for most regions and the Federal Highway Deferred Maintenance is calculated via the HPMA.

In an effort to improve the accuracy of treatment recommendations and pavement condition descriptions, an extensive study was completed throughout 2010 that has resulted in changes to the RIP condition reporting method, specifically the distresses and indexes that comprise the Pavement Condition Rating (PCR). It was determined that a better representation of PCR could

be achieved by modifying the relative impact certain distresses would have on the overall rating. The changes that were implemented were endorsed by management at both the FHWA and NPS in October 2010. These changes will allow greater use of RIP and HPM data for not simply condition data reporting, but also as a reliable tool for project identification and selection. Because of these changes, the PCR Condition ratings reported in Cycle 5 do not directly relate to the condition ratings reported in previous cycle RIP Reports. For more detailed information about the changes, see Section 3 and Section 10 in this RIP Report.

Cycle 5 has launched in the summer of 2010 and will again comprise all parks, large and small, that are served by paved roads and/or parking areas. For Cycle 5, the decision was made to collect condition data in large parks on Functional Class 1, 2, and 7 paved routes only, as well as any new routes that were previously not collected. In small parks, all paved routes and parking areas will be collected. As a result, this will include 81 large parks with 4,459 paved route miles and 168 small parks with 529 paved route miles and associated paved parking areas.

Since 1984, the Road Inventory Program has been funded through the Federal Lands Highway Park Roads and Parkways (PRP) Program. Currently, coordination of the RIP with FLH is under the NPS Washington Headquarters Park Facility Management Division. The FLH Washington office coordinates policy and prepares national reports and needs assessment studies for Congress.

In 1998, the Transportation Equity Act for the 21st Century (TEA-21) amended Title 23 U.S.C., and inserted Section 204(a)(6) requiring the FHWA and NPS, to develop by rule, a Pavement Management System (PMS) applied to park roads and parkways serving the National Park System.

FLH is responsible for the accuracy of all data presented in this report. Any questions or comments concerning the contents of this report should be directed to the national RIP Coordinator located in Sterling, Virginia.

Respectfully,

FHWA RIP Team

FHWA/Eastern Federal Lands
21400 Ridgetop Circle
Sterling, VA 20166
(703) 404-6371

FHWA/Central Federal Lands
12300 West Dakota Ave
Lakewood, CO 80228
(720) 963-3560

Section 2 Park Route Inventory



American Memorial Park



Federal Lands Highway
Road Inventory Program

Cycle 5 NPS/RIP Route ID Report

Road Inventory Program 03/20/2012

(Numerical By Route #)

Page 2 of 4

Shading Color Key:

Red text denotes approx. mileage

White = Paved Routes, DCV Driven

Grey = Paved Routes, DCV not Driven

Yellow = Unpaved Routes, DCV not Driven

Black = State, Local or Private non-NPS Routes

Blue = All Paved Parking Areas

■ = Concession Route Flag ON

Green = All Unpaved Parking Areas

*Unpaved route data was obtained from NPS and was not inventoried by the Road Inventory Program (RIP).

** DCV - Data Collection Vehicle NC - Not Collected

AMME

AMERICAN MEMORIAL PARK

Rte. No.	Cycle Collected	FMISS No.	Concess Route	Route Name	Route Description From To	Maint. District	Paved Miles	Un-Paved Miles	Total Route Length	Func. Class	Manual Rated SQ/FT	Surf. Type	Area Maps
0907B	3	104839		MICRO BEACH PARKING	ADJACENT TO ROUTE 0010 (MICRO BEACH LOOP ROAD) ON RIGHT	MICRO BEACH AREA	0.00	0.00	0.00		2,197	GR	
0908	5	104840		POLICE STATION (BOATING SAFETY) PARKING	FROM ROUTE 0201 (MARINA LANE (OUTER COVE ROAD)) TO ROUTE 0100 (SMILING COVE ROAD)	MARINA AREA	0.00	0.00	0.00		27,429	AS	1
0909	5	104841		COVE HANDICAPPED PARKING	ADJACENT TO ROUTE 0201 (MARINA LANE (OUTER COVE ROAD)) ON RIGHT AT MP 0.25	MARINA AREA	0.00	0.00	0.00		811	AS	1
0910ZZ	5	104842		COVE EAST PARKING AREAS	ADJACENT TO ROUTE 0202 (BASIN PLACE (EAST OUTER COVE ROAD))	MARINA AREA	0.00	0.00	0.00		8,053	AS	1
0911	5	104837		MICRO BEACH OVERFLOW PARKING	FROM ROUTE 5600 (MICRO BEACH ROAD (NON NPS)) TO PARKING	MICRO BEACH AREA	0.00	0.00	0.00		50,305	CO	1
0912	NC	70426		MARINA AREA UNPAVED PARKING	ADJACENT TO ROUTE 0201 (MARINA LANE (OUTER COVE ROAD)) ON RIGHT AT MP 0.29	MARINA AREA	0.00	0.00	0.00		16,500	GR	
0913	5	239508		MICRO BEACH RESTROOM PAVED PARKING	ADJACENT TO ROUTE 0010 (MICRO BEACH LOOP ROAD) ON RIGHT	MICRO BEACH AREA	0.00	0.00	0.00		1,133	CO	1
0914	5	239509		SMILING COVE TRANSIENT DOCK PARKING	FROM ROUTE 0201 (MARINA LANE (OUTER COVE ROAD)) TO PARKING	MARINA AREA	0.00	0.00	0.00		3,848	AS	1
5600	5			MICRO BEACH ROAD (NON NPS)	FROM MIDDLE ROAD (NON NPS) TO ROUTE 0904 (MICRO BEACH PAVILION PARKING)	N/A	0.59	0.00			0	AS	1

Cycle 5 NPS/RIP Route ID Report

Shading Color Key:
Red text denotes approx. mileage

White = Paved Routes, DCV Driven
Grey = Paved Routes, DCV not Driven

Yellow = Unpaved Routes, DCV not Driven
Black = State, Local or Private non-NPS Routes

Blue = All Paved Parking Areas
■ = Concession Route Flag ON

Green = All Unpaved Parking Areas

*Unpaved route data was obtained from NPS and was not inventoried by the Road Inventory Program (RIP).

** DCV - Data Collection Vehicle NC - Not Collected

CYCLE 5 SUMMARY TOTALS FOR AMERICAN MEMORIAL PARK

CYCLE 5 ROUTE TOTALS

DCV Driven Route Miles	0.00
Manually Rated Route Miles	1.02
TOTAL PARK ROUTE MILES COLLECTED IN CYCLE 5	1.02
Manually Rated Routes (SQFT)	114,106
TOTAL UNPAVED PARK ROUTE MILES	0.33

CYCLE 5 CONCESSION TOTALS

Concession Paved Route Miles	0.00
Concession Unpaved Route Miles	0.00
TOTAL CONCESSION ROUTE MILES	0.00
Concession Paved Parking Area SQFT	0
Concession Unpaved Parking Area SQFT	0
TOTAL CONCESSION PARKING AREA SQFT	0
Concession Manually Rated Rotes SQFT	0

* CYCLE 5 PARKING AREA TOTALS

Paved Parking (SQFT)	227,462
Unpaved Parking (SQFT)	44,000
TOTAL PARKING (SQFT)	271,462

CYCLE 5 WEIGHTED AVERAGE PARK VALUES

DCV Driven PCR	N/A
**Manually Rated Routes PCR	82
**Parking PCR	70
***Total Equivalent Lane Miles	5.88

* - The Parking Area Totals SQFT value represents all parking areas collected in Cycle 5, both park and concessionaire.

** - Parking and Manually Rated Routes are assigned the following PCR values based on their observed condition: Construction=-1, Excellent=97, Good=90, Fair=73, and Poor=45.

*** - Equivalent Lane Miles are calculated by route using the following equations : DCV and Manually Rated Lines Routes=(PAVE_WIDTHxPAVED_MI)/11 foot lane. Parking Areas=SQ_FEET/5280/11. Manually Rated Polygons=SQ_FEET/5280/11.

Cycle 5 NPS/RIP Route ID Report

Shading Color Key:
Red text denotes approx. mileage

White = Paved Routes, DCV Driven
Grey = Paved Routes, DCV not Driven

Yellow = Unpaved Routes, DCV not Driven
Black = State, Local or Private non-NPS Routes

Blue = All Paved Parking Areas
■ = Concession Route Flag ON

Green = All Unpaved Parking Areas

*Unpaved route data was obtained from NPS and was not inventoried by the Road Inventory Program (RIP).

** DCV - Data Collection Vehicle NC - Not Collected

General Park Road Functional Classification Table

- Class 1** Principal Park Road/Rural Parkway (Public Roads) Roads which constitute the main access route, circulatory tour, or thoroughfare for park visitors. Route Numbers 1 - 99. Note: Rural parkways (e.g. Natchez Trace) are numbered 1 - 9. State Routes Inventoried for Park. Route Numbers 5000-5999
- Class 2** Connector Park Road (Public Roads) - Roads which provide access within a park to areas of scenic, scientific, recreational or cultural interest, such as overlooks, campgrounds, etc. Route Numbers 100-199.
- Class 3** Special Purpose Park Road (Public Roads) - Roads which provide circulation within public areas, such as campgrounds, picnic areas, visitor center complexes, concessionaire facilities, etc. These roads generally serve low-speed traffic and are often designed for one-way circulation. Route Numbers 200-299.
- Class 4** Primitive Park Roads (Public Roads) - Roads which provide circulation through remote areas and/or access to primitive campgrounds and undeveloped areas. These roads frequently have no minimum design standards and their use may be limited to specially equipped vehicles. Route Numbers 200-299. Note: Functional Classes 3 and 4 have the same route numbers because, historically, they were numbered similarly.
- Class 5** Administrative Access Road (Administrative Roads) - All public roads intended for access to administrative developments or structures such as park offices, employee quarters, or utility areas. Route Numbers 400-499.
- Class 6** Restricted Road (Administrative Roads) - All roads normally closed to the public, including patrol roads, truck trails, and other similar roads. Route Numbers 400-499. Note: Functional Classes 5 and 6 have the same route numbers because historically they were numbered similarly and often there is little distinction between these routes. For example, because utility areas and employee housing are often closed to the public, this restriction would result in classification of FC 6 rather than FC 5.
- Class 7** Urban Parkway (Urban Parkways and City Streets) - These facilities serve high volumes of park and non-park related traffic and are restricted, limited-access facilities in an urban area. This category of roads primarily encompasses the major parkways which serve as gateways to our nation's capital. Other major park roads or portions thereof, however, may be included in this category. Route Numbers 1-9.
- Class 8** City Streets (Urban Parkways and City Streets) - City streets are usually extensions of the adjoining street system that are owned and maintained by the National Park Service. The construction and/or reconstruction should conform with accepted local engineering practice and local conditions. Route Numbers 600-699.

A park road system contains those roads within or giving access to a park or other unit of the NPS which are administered by the NPS, or by the Service in cooperation with other agencies. The assignment of a functional classification (FC) to a park road is not based on traffic volumes or design speed, but on the intended use or function of that road or route.

The historic route numbering system also included a 300 number series for interpretive roads, and a 500 series for one-way roads. There are approximately 250 roads nationwide which are designated by the 300 and 500 series. The numbers for these roads will be maintained for reporting consistency. However, since these interpretive and one-way routes are not as clearly tied to a specific functional class, the 300 and 500 series will be discontinued for future use.

5000 route numbers are assigned to Non-NPS Routes that are State, County or City owned which border, traverse, or provide access to Park Facilities or Assets. 5000 Routes are driven for GPS and Video Log only.

Surface Type Abbreviations:

- AS - Asphaltic Concrete Pavement**
- CO - Portland Cement Concrete Pavement**
- BR - Brick or Pavers Road Bed**
- CB - Cobble Stone Road Bed**
- GR - Gravel Road Bed**
- SA - Sand Road Bed**
- NV - Native or Dirt Material Road Bed**
- OT - Other Materials Road Bed**

NPS/RIP Subcomponent Details for AMME

Road Inventory Program 03/20/2012

(Numerical By Subcomponent #)

Page 1 of 1

Shading Color Key:

White = Paved Routes, DCV Driven

Yellow = Unpaved Routes, DCV not Driven

Blue = All Paved Parking Areas

Green = All Unpaved Parking Areas

Red text denotes approx. mileage

Grey = Paved Routes, DCV not Driven

Black = State, Local or Private non-NPS Routes

■ = Concession Route Flag ON

*Unpaved route data was obtained from NPS and was not inventoried by the Road Inventory Program (RIP).

AMME

AMERICAN MEMORIAL PARK

Asset Entered in FMSS System

Rte. No.	FMSS No.	Cycle Collected	Route Name	From	To	Concess Route	Func. Class	Paved Miles	Un-Paved Miles	Total Route Length	Manual Rated SQ/FT
0910ZZ	104842	5	COVE EAST PARKING AREAS	ADJACENT TO ROUTE 0202 (BASIN PLACE (EAST OUTER COVE ROAD))				0.00	0.00	0.00	8,053

Asset AMME-0910ZZ Subcomponent Breakdown

Rte. No.	FMSS No.	Cycle Collected	Route Name	From	To	Concess Route	Func. Class	Paved Miles	Un-Paved Miles	Total Route Length	Manual Rated SQ/FT
0910AZ	104842	5	COVE EAST PARKING A	ADJACENT TO ROUTE 0202 (BASIN PLACE (EAST OUTER COVE ROAD)) ON RIGHT AT MP 0.13				0.00	0.00	0.00	7,387
0910BZ	104842	5	COVE EAST PARKING B	ADJACENT TO ROUTE 0202 (BASIN PLACE (EAST OUTER COVE ROAD)) ON RIGHT AT MP 0.03				0.00	0.00	0.00	666

ROUTE IDENTIFICATION CHANGES TO ROUTES FROM PREVIOUS CYCLE - AMME

ROUTES ADDED FROM PREVIOUS INVENTORY:			
Route #	Route Name	Reason for Addition	Comments
0910BZ	COVE EAST PARKING B	OTHER	PARKING AREA ADDED AND COMBINED WITH 0910AZ
0912	MARINA AREA UNPAVED PARKING	OTHER	PARKING AREA ADDED TO INVENTORY
0913	MICRO BEACH RESTROOM PAVED PARKING	RECENTLY CONSTRUCTED ROUTE	NEW PARKING AREA ADDED TO INVENTORY
0914	SMILING COVE TRANSIENT DOCK PARKING	RECENTLY CONSTRUCTED ROUTE	NEW PARKING AREA ADDED TO INVENTORY; LOCATED ON THE OLD ROUTE 0201 ALIGNMENT
ROUTES MODIFIED FROM PREVIOUS INVENTORY:			
Route #	Route Name	Type of Modification	Comments
0010	MICRO BEACH LOOP ROAD	ROUTES COMBINED	ROUTE 0200 WAS COMBINED INTO ROUTE 0010
0010	MICRO BEACH LOOP ROAD	REALIGNED	PAVED PORTIONS TRANSFERRED TO ROUTE 0911 AND 0904. ROUTE 0010 NOW FOLLOWS ROUTE 0200 ALIGNMENT. PORTION OF ROUTE 0010 ALONG BEACH HAS BEEN CLOSED.
0100	SMILING COVE ROAD	REALIGNED	BEGINNING OF ROUTE WAS COLLECTED ON A DIFFERENT ALIGNMENT. CHANGES TO ROUTE LENGTH WERE INSIGNIFICANT. NAME CHANGED FROM "BEACH ROAD" IN CYCLE 3 TO "SMILING COVE ROAD" IN CYCLE 5 AS PER NPS.
0201	MARINA LANE (OUTER COVE ROAD)	REALIGNED	BEGINNING OF ROUTE FOLLOWS A NEW ALIGNMENT. CHANGES TO ROUTE LENGTH WERE INSIGNIFICANT.
0900	MARINA AREA PAVED PARKING	SQ FEET CHANGE	SECTION ADDED TO PARKING AREA AROUND THE BOAT RAMP

ROUTE IDENTIFICATION CHANGES TO ROUTES FROM PREVIOUS CYCLE - AMME

ROUTES MODIFIED FROM PREVIOUS INVENTORY:			
Route #	Route Name	Type of Modification	Comments
0903	VISITOR CENTER / AMPHITHEATER PARKING	RECONSTRUCTED	PARKING LOT RECONSTRUCTED WITH NEW SHAPE
0904	MICRO BEACH PAVILION PARKING	SQ FEET CHANGE	PAVED ENTRY ROAD TRANSFERRED FROM ROUTE 0010 AND ADDED TO PARKING AREA
0908	POLICE STATION (BOATING SAFETY) PARKING	SQ FEET CHANGE	ENTRY ROAD ADDED TO PARKING AREA. THE NEW ADDITION WAS CONSIDERED PART OF ROUTE 0201 IN CYCLE 3.
0911	MICRO BEACH OVERFLOW PARKING	SQ FEET CHANGE	PAVED PORTION OF ROUTE 0010 TRANSFERRED TO PARKING AREA
OTHER CHANGES FROM PREVIOUS INVENTORY:			
Route #	Route Name	Type of Change	Comments
0400	WETLANDS AREA UNPAVED MAINTENANCE ROAD	FUNCTIONAL CLASS CHANGE	FUNCTIONAL CLASS CHANGED FROM 5 TO 6 BECAUSE IT IS NONPUBLIC
ROUTES REMOVED FROM PREVIOUS INVENTORY:			
Route #	Route Name	Reason for Removal	Comments
0700	ROAD WA UNPAVED MAINTENANCE ROAD	OTHER	ROUTE WAS A DUPLICATE OF ROUTE 0400
0800	BOAT LAUNCH	OTHER	REMOVED FROM INVENTORY BECAUSE IT IS A BOAT RAMP
0907A	MICRO BEACH PARKING A	CLOSED/ABANDONED	REMOVED BECAUSE IT WASHED INTO OCEAN

Section 3

Park Summary Information



American Memorial Park



Note: This park is classified as a Small Park. No Data Collection Vehicle routes exist in this park at the time of data collection. Therefore, there is no data to report for this section.

Section 4

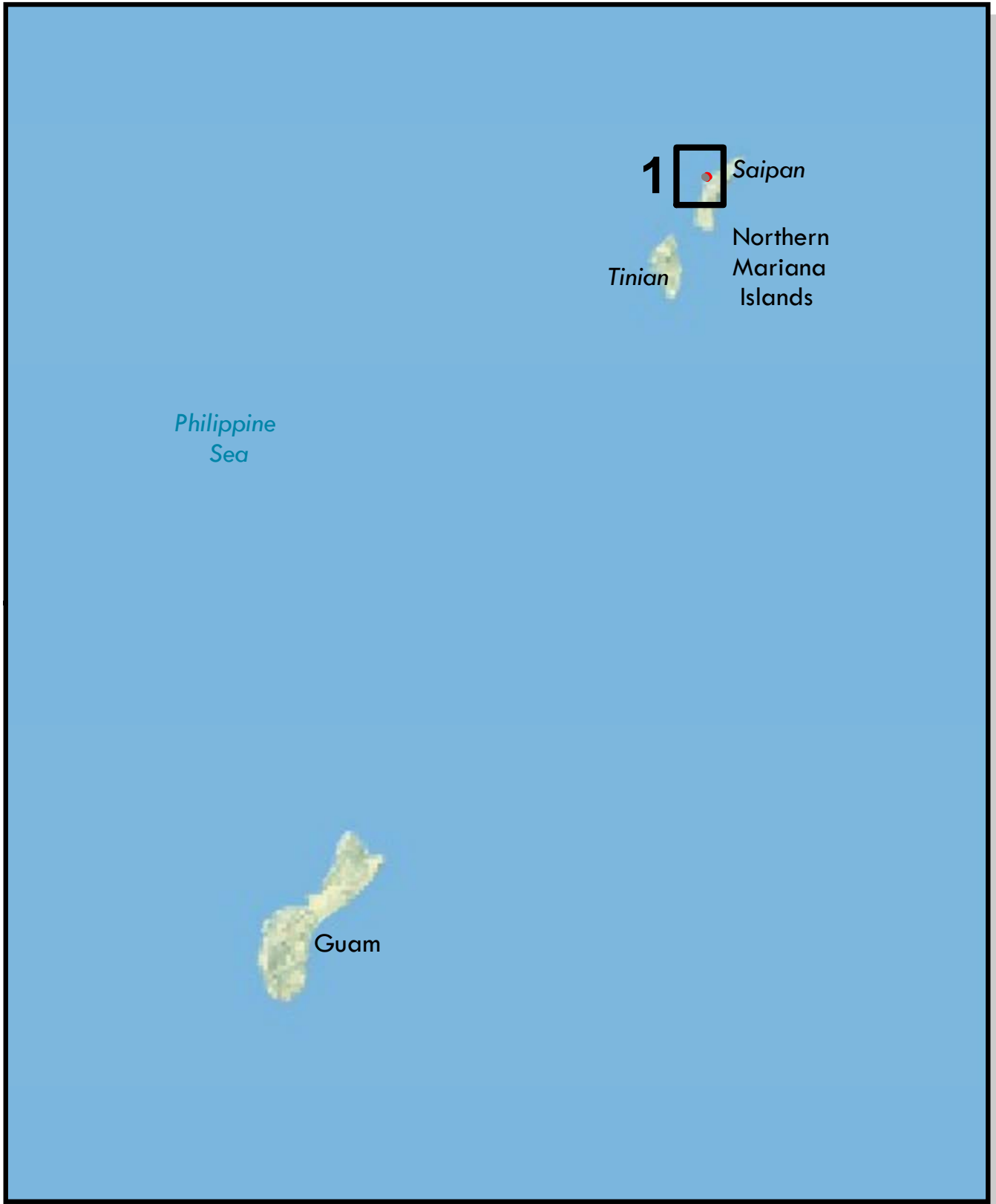
Park Route Location Maps




American Memorial Park

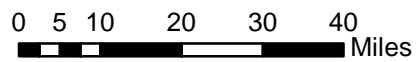


**American Memorial Park
Route Location Map
Key Map**

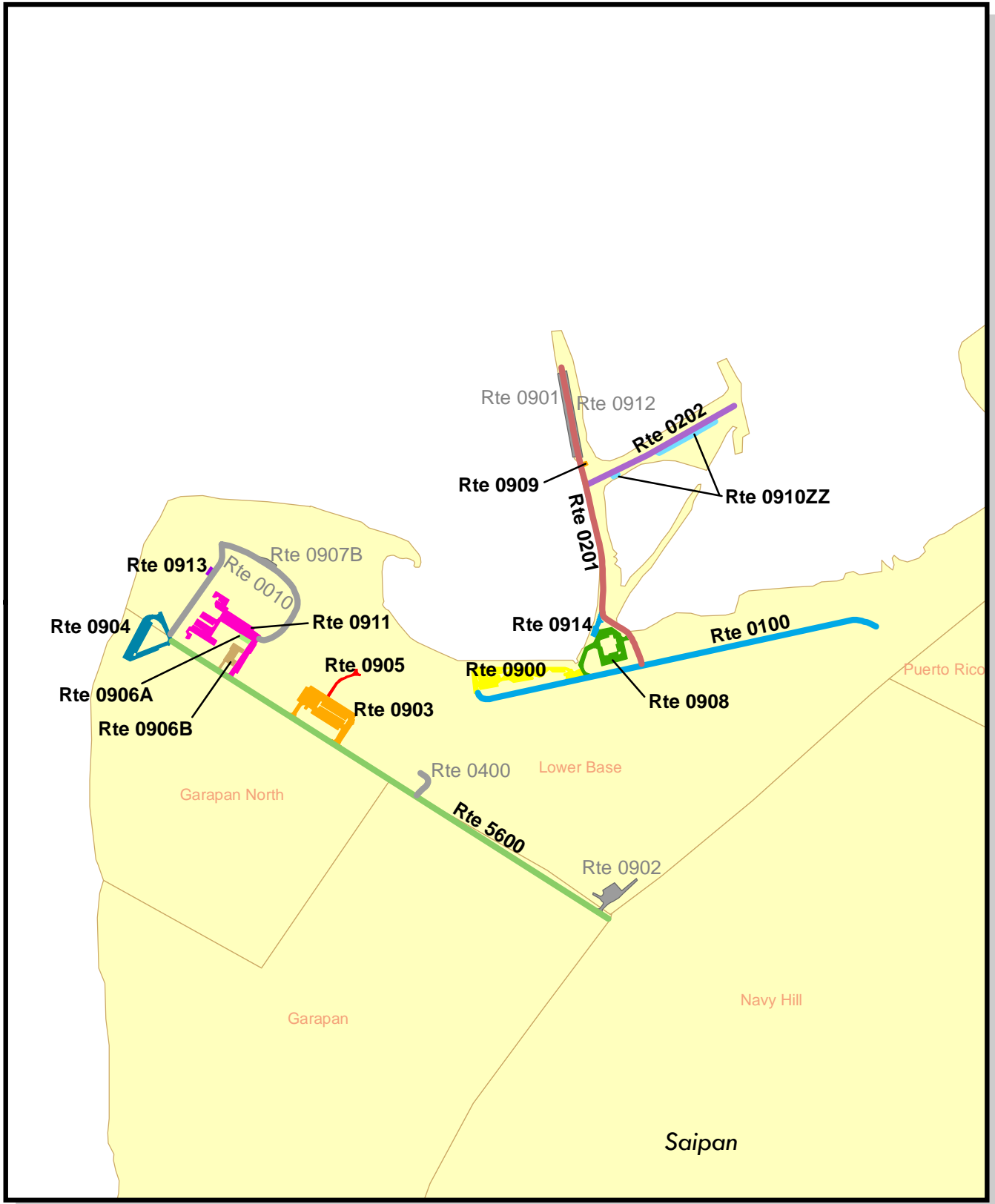


 Cycle 5 Collected Routes

 Unpaved Routes

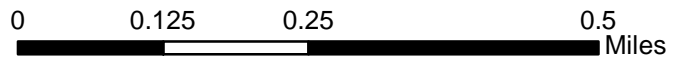


American Memorial Park Route Location Map Area 1



Unique colors used to differentiate routes

Unpaved Routes



Section 5
Paved Route
Condition Rating Sheets



American Memorial Park



Note: This park is classified as a Small Park. No Data Collection Vehicle routes exist in this park at the time of data collection. Therefore, there is no data to report for this section.

Section 6
Manually Rated Paved Route
Condition Rating Sheets



American Memorial Park



Federal Lands Highway
Road Inventory Program

AMERICAN MEMORIAL PARK

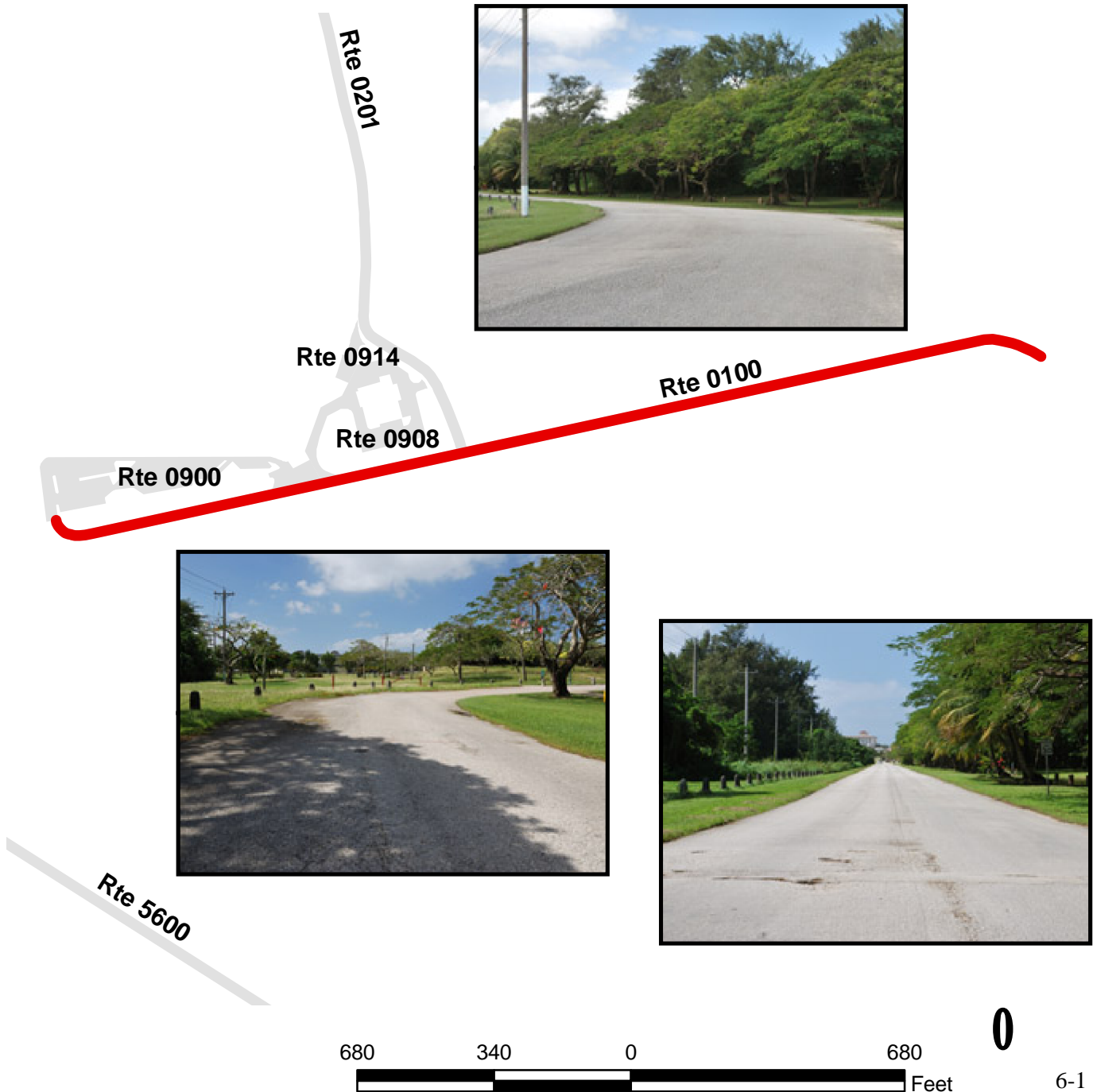
Route 0100

SMILING COVE ROAD

FROM CNMI ROUTE 323 (SMILING COVE ROAD (NON NPS))
TO ROUTE 0900 (MARINA AREA PAVED PARKING)

Route Number	Public / NonPublic	Date Visited	Area (sq ft)	Lane Miles *	MRL	
					Length (mi)	Width (ft)
0100	PUBLIC	1/10/2012	53,666	0.92	0.46	22
Culverts	Drop Inlets	Gates	Curb & Gutter	Curb	PCR	Surface Type
0	0	1	NO CURB AND GUTTER	NO CURB	FAIR/73	AS

* Lane miles are based on 11' lane widths



0

AMERICAN MEMORIAL PARK

Route 0201

MARINA LANE (OUTER COVE ROAD)
FROM ROUTE 0100 (SMILING COVE ROAD)
TO END

Route Number	Public / NonPublic	Date Visited	Area (sq ft)	Lane Miles *	MRL	
					Length (mi)	Width (ft)
0201	PUBLIC	1/10/2012	40,693	0.70	0.37	21
Culverts	Drop Inlets	Gates	Curb & Gutter	Curb	PCR	Surface Type
0	0	0	NO CURB AND GUTTER	CONCRETE CURB	GOOD/90	AS

* Lane miles are based on 11' lane widths



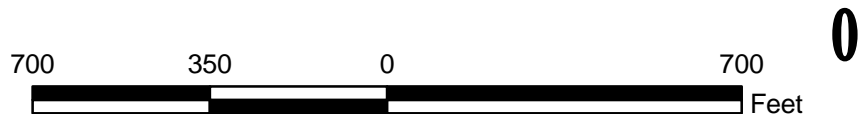
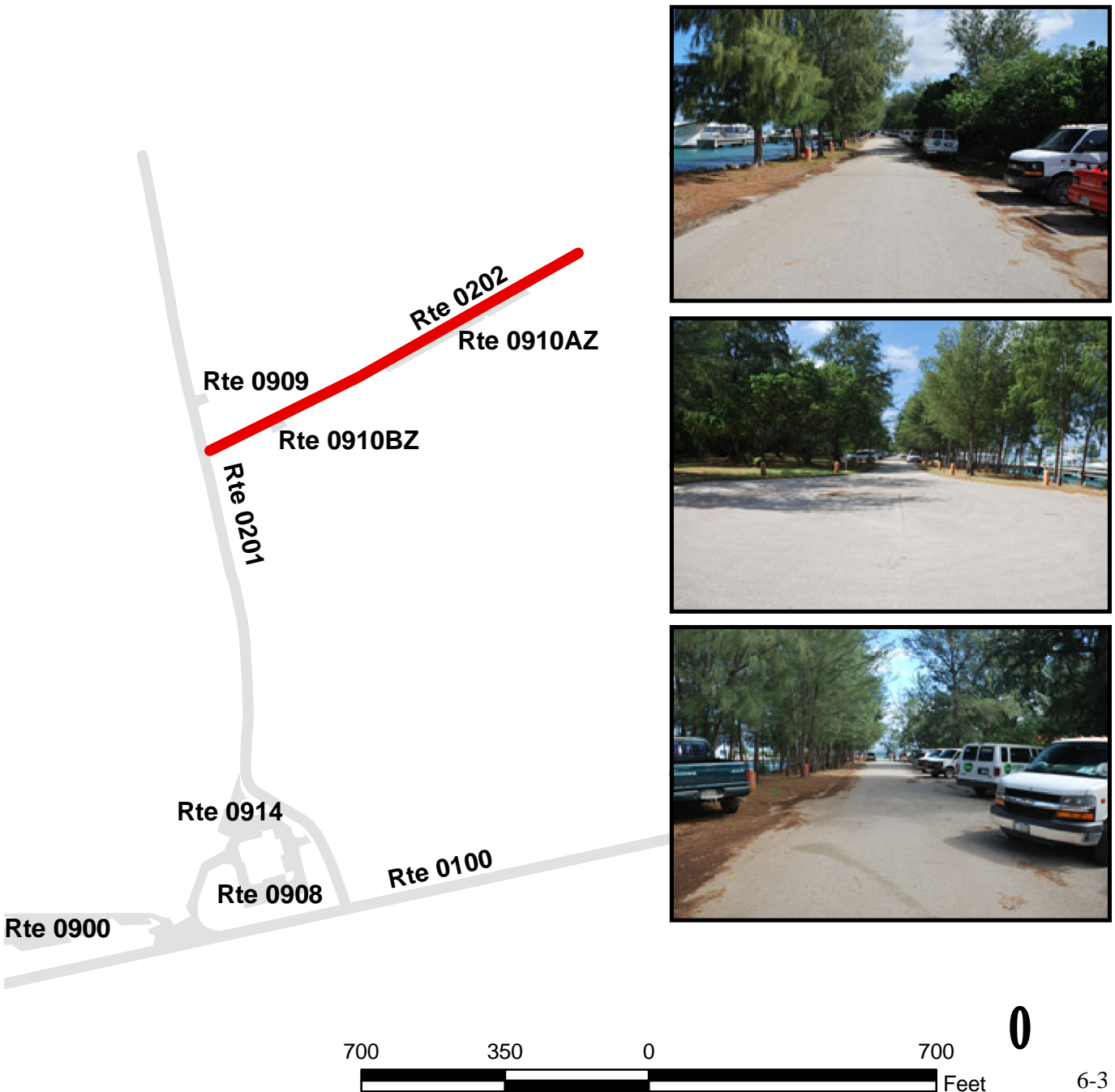
AMERICAN MEMORIAL PARK

Route 0202

BASIN PLACE (EAST OUTER COVE ROAD)
 FROM ROUTE 0201 (MARINA LANE (OUTER COVE ROAD))
 TO END

Route Number	Public / NonPublic	Date Visited	Area (sq ft)	Lane Miles *	MRL	
					Length (mi)	Width (ft)
0202	PUBLIC	1/10/2012	19,747	0.34	0.19	20
Culverts	Drop Inlets	Gates	Curb & Gutter	Curb	PCR	Surface Type
0	0	0	NO CURB AND GUTTER	CONCRETE CURB	GOOD/90	AS

* Lane miles are based on 11' lane widths



Section 7 Parking Area Condition Rating Sheets



American Memorial Park



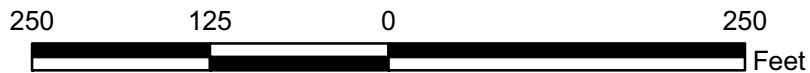
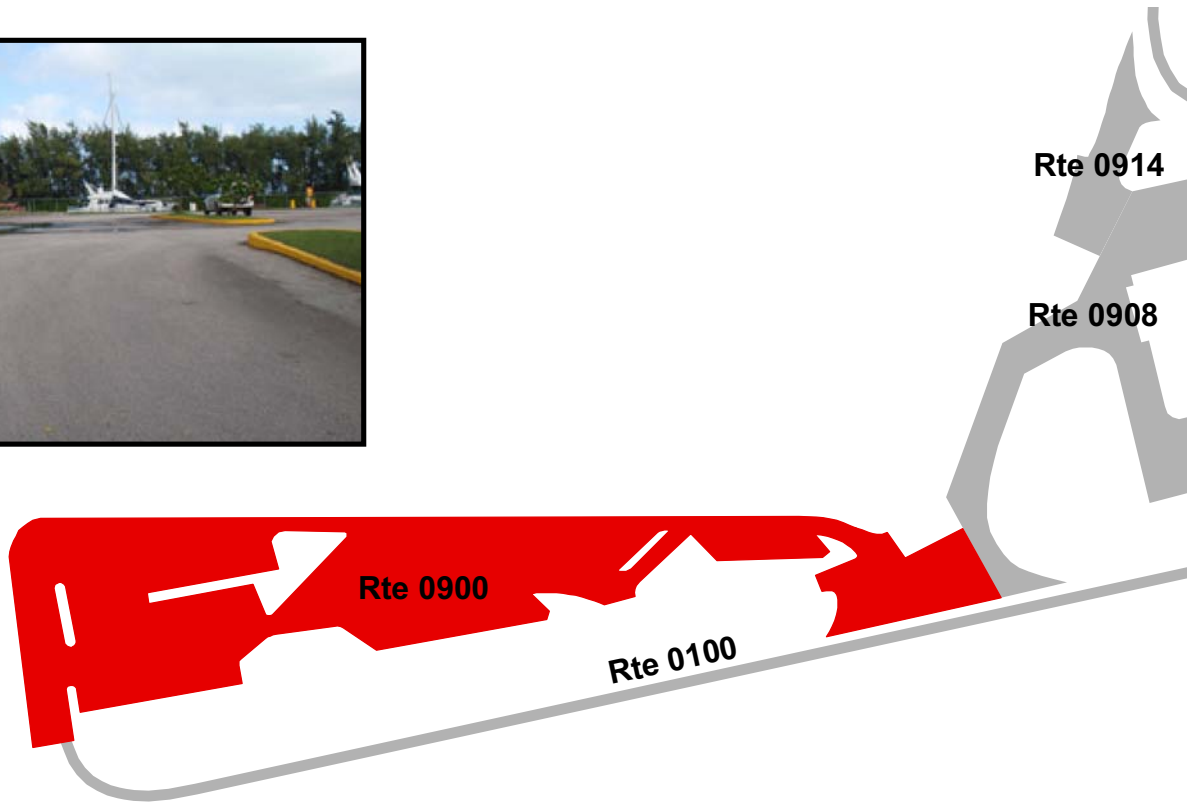
AMERICAN MEMORIAL PARK

Route 0900

MARINA AREA PAVED PARKING
 FROM END OF ROUTE 0100 (SMILING COVE ROAD)
 TO ROUTE 0100 (SMILING COVE ROAD)

Route Number	Public / NonPublic	Date Visited	Area (sq ft)	Lane Miles *	Surface Type
0900	PUBLIC	1/10/2012	46,535	0.80	AS
Culverts	Drop Inlets	Gates	Curb & Gutter	Curb	PCR
0	0	2	NO CURB AND GUTTER	CONCRETE CURB	GOOD/90

* Lane miles are based on 11' lane widths



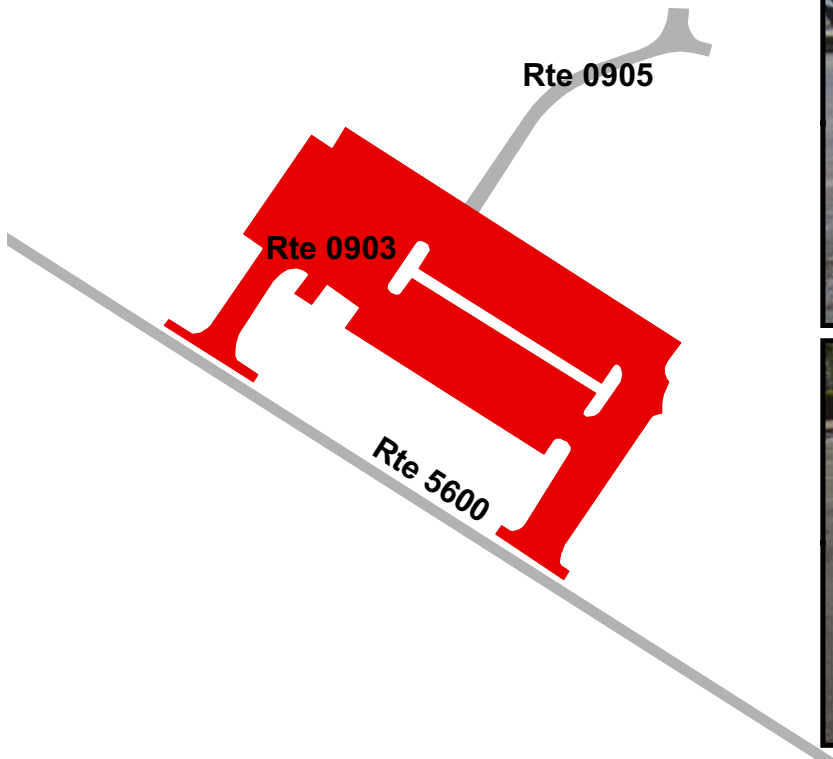
AMERICAN MEMORIAL PARK

Route 0903

VISITOR CENTER / AMPHITHEATER PARKING
 FROM ROUTE 5600 (MICRO BEACH ROAD (NON NPS))
 TO ROUTE 5600 (MICRO BEACH ROAD (NON NPS))

Route Number	Public / NonPublic	Date Visited	Area (sq ft)	Lane Miles *	Surface Type
0903	PUBLIC	1/10/2012	49,041	0.84	CO
Culverts	Drop Inlets	Gates	Curb & Gutter	Curb	PCR
0	4	0	NO CURB AND GUTTER	CONCRETE CURB	FAIR/73

* Lane miles are based on 11' lane widths



AMERICAN MEMORIAL PARK

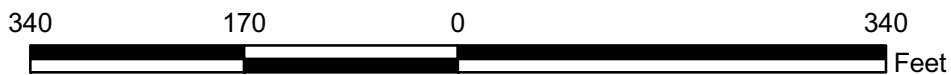
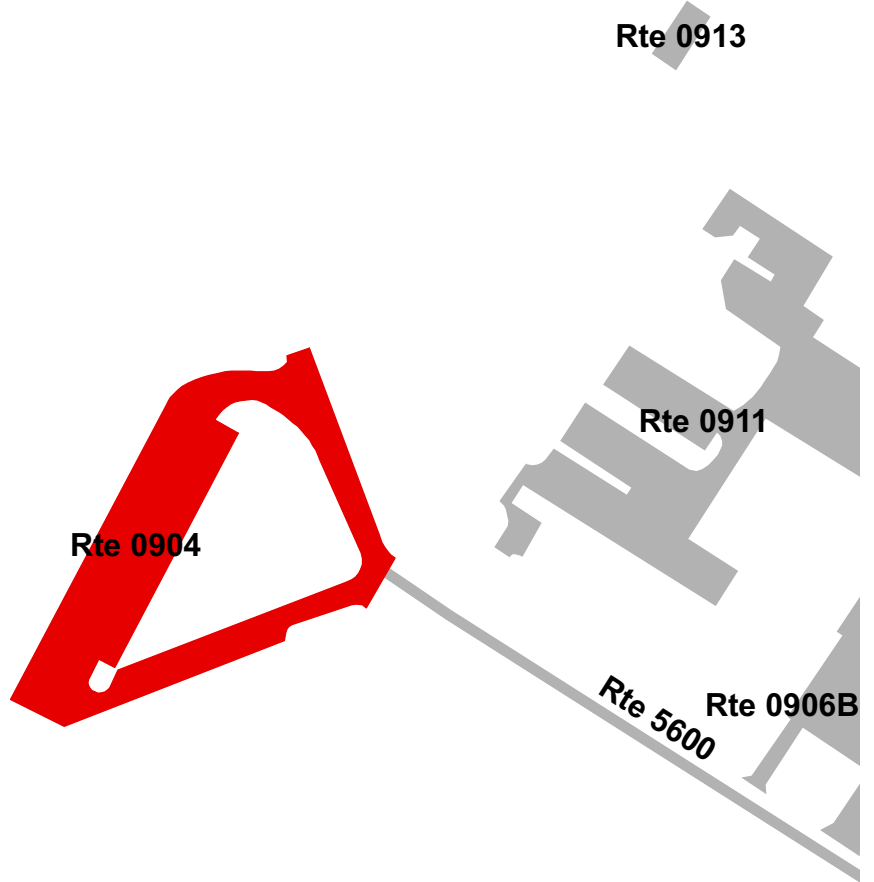
Route 0904

MICRO BEACH PAVILION PARKING

FROM END OF ROUTE 5600 (MICRO BEACH ROAD (NON NPS))
TO PARKING

Route Number	Public / NonPublic	Date Visited	Area (sq ft)	Lane Miles *	Surface Type
0904	PUBLIC	1/10/2012	27,377	0.47	AS
Culverts	Drop Inlets	Gates	Curb & Gutter	Curb	PCR
0	0	1	NO CURB AND GUTTER	CONCRETE CURB	FAIR/73

* Lane miles are based on 11' lane widths



AMERICAN MEMORIAL PARK

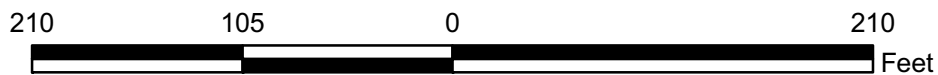
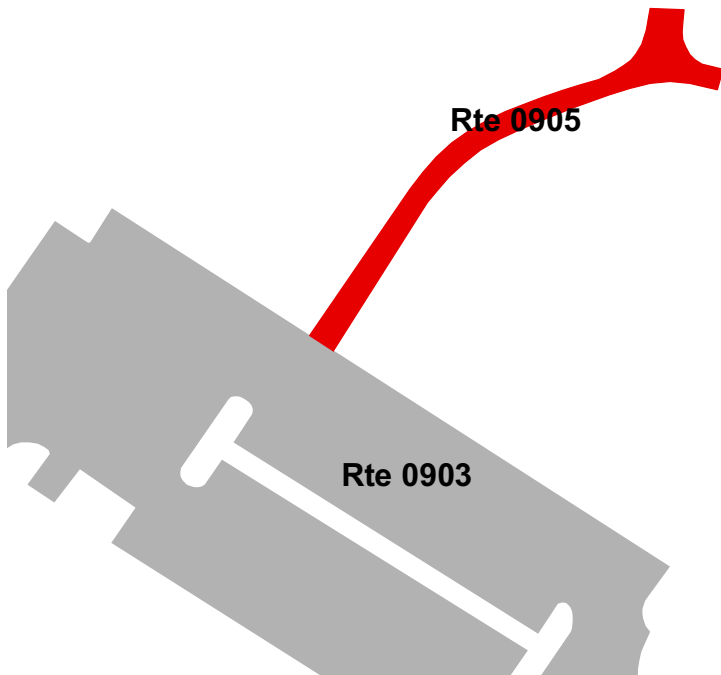
Route 0905

ADMINISTRATIVE OFFICES PARKING

FROM ROUTE 0903 (VISITOR CENTER / AMPHITHEATER PARKING)
TO PARKING

Route Number	Public / NonPublic	Date Visited	Area (sq ft)	Lane Miles *	Surface Type
0905	NONPUBLIC	1/10/2012	3,350	0.06	CO
Culverts	Drop Inlets	Gates	Curb & Gutter	Curb	PCR
0	0	1	NO CURB AND GUTTER	NO CURB	FAIR/73

* Lane miles are based on 11' lane widths



AMERICAN MEMORIAL PARK

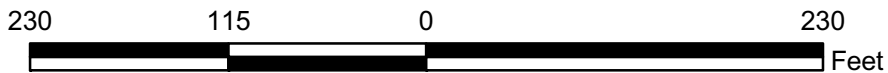
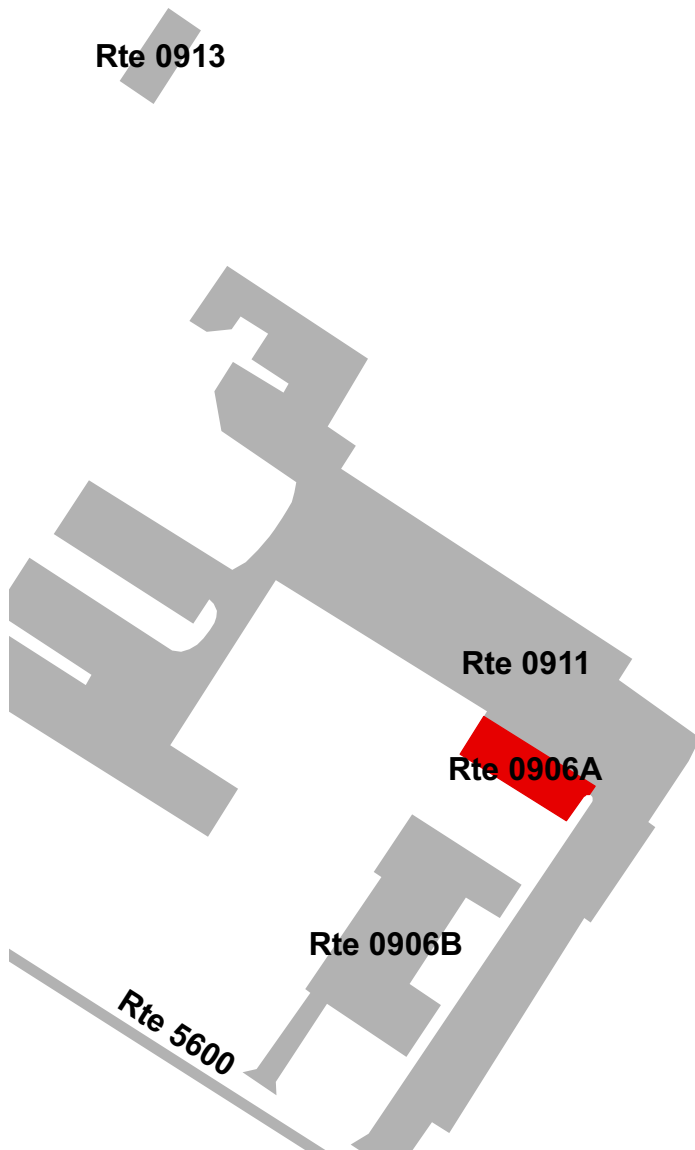
Route 0906A

MAINTENANCE EMPLOYEE PARKING

ADJACENT TO ROUTE 0911 (MICRO BEACH OVERFLOW PARKING)

Route Number	Public / NonPublic	Date Visited	Area (sq ft)	Lane Miles *	Surface Type
0906A	PUBLIC	1/10/2012	1,839	0.03	CO
Culverts	Drop Inlets	Gates	Curb & Gutter	Curb	PCR
0	0	0	NO CURB AND GUTTER	CONCRETE CURB	POOR/45

* Lane miles are based on 11' lane widths



AMERICAN MEMORIAL PARK

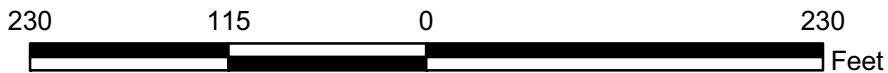
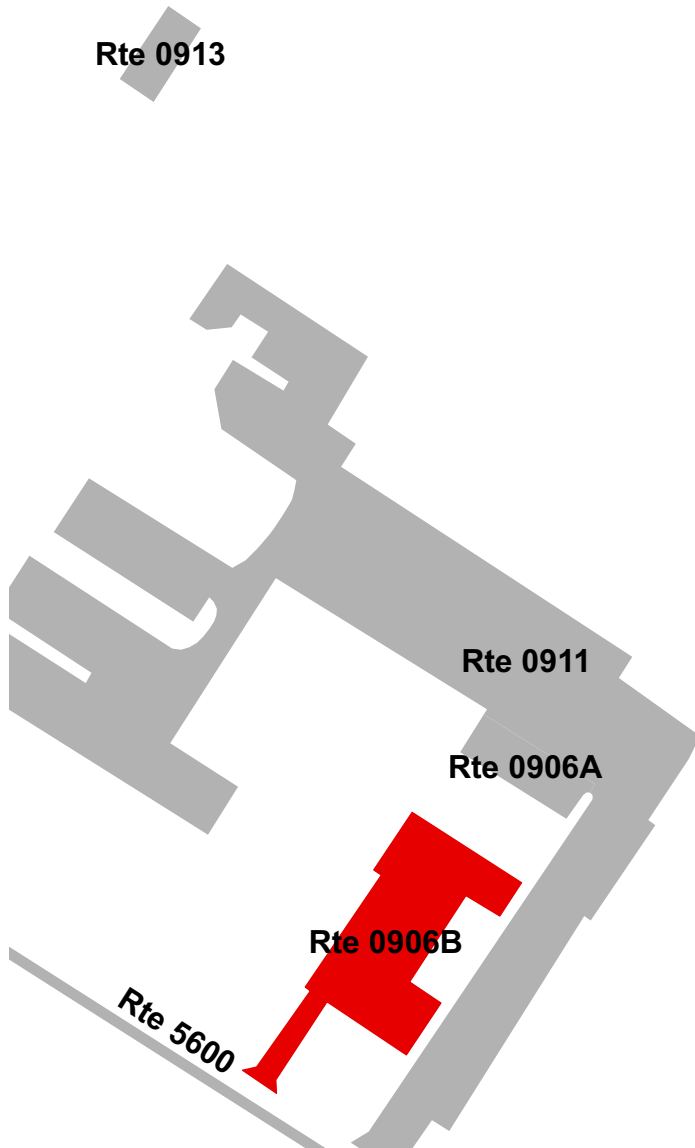
Route 0906B

MAINTENANCE YARD

FROM ROUTE 5600 (MICRO BEACH ROAD (NON NPS))
TO MAINTENANCE YARD

Route Number	Public / NonPublic	Date Visited	Area (sq ft)	Lane Miles *	Surface Type
0906B	NONPUBLIC	1/10/2012	7,741	0.13	CO
Culverts	Drop Inlets	Gates	Curb & Gutter	Curb	PCR
0	0	1	NO CURB AND GUTTER	CONCRETE CURB	POOR/45

* Lane miles are based on 11' lane widths



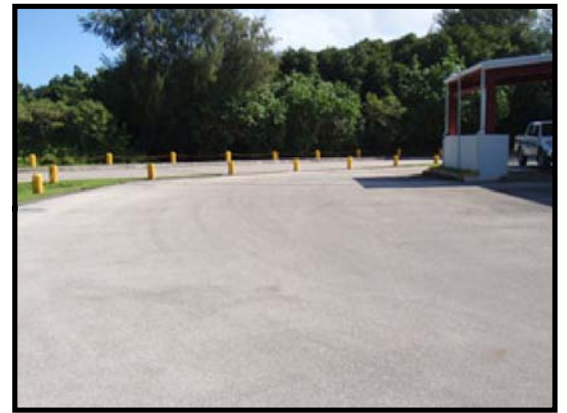
AMERICAN MEMORIAL PARK

Route 0908

POLICE STATION (BOATING SAFETY) PARKING
 FROM ROUTE 0201 (MARINA LANE (OUTER COVE ROAD))
 TO ROUTE 0100 (SMILING COVE ROAD)

Route Number	Public / NonPublic	Date Visited	Area (sq ft)	Lane Miles *	Surface Type
0908	NONPUBLIC	1/10/2012	27,429	0.47	AS
Culverts	Drop Inlets	Gates	Curb & Gutter	Curb	PCR
0	1	0	NO CURB AND GUTTER	CONCRETE CURB	GOOD/90

* Lane miles are based on 11' lane widths



AMERICAN MEMORIAL PARK

Route 0909

COVE HANDICAPPED PARKING

ADJACENT TO ROUTE 0201 (MARINA LANE (OUTER COVE ROAD)) ON RIGHT AT MP 0.25

Route Number	Public / NonPublic	Date Visited	Area (sq ft)	Lane Miles *	Surface Type
0909	PUBLIC	1/10/2012	811	0.01	AS
Culverts	Drop Inlets	Gates	Curb & Gutter	Curb	PCR
0	0	0	NO CURB AND GUTTER	CONCRETE CURB	POOR/45

* Lane miles are based on 11' lane widths



AMERICAN MEMORIAL PARK

Route 0910ZZ

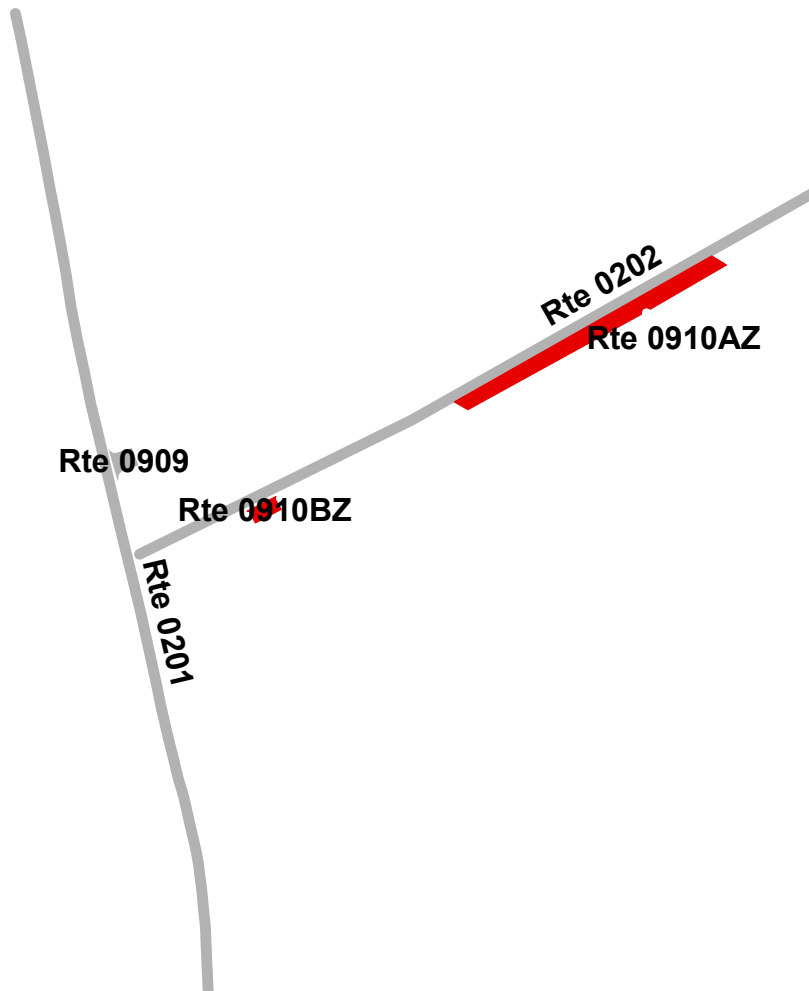
COVE EAST PARKING AREAS

ADJACENT TO ROUTE 0202 (BASIN PLACE (EAST OUTER COVE ROAD))

Summary Record

Route Number	Public / NonPublic	Date Visited	Area (sq ft)	Lane Miles *	Surface Type
0910ZZ	PUBLIC	1/10/2012	8,053	0.14	AS
Culverts	Drop Inlets	Gates	Curb & Gutter	Curb	PCR
0	0	0	NO CURB AND GUTTER	NO CURB	SUMMARY/45

* Lane miles are based on 11' lane widths



AMERICAN MEMORIAL PARK

Route 0910AZ

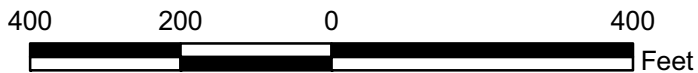
COVE EAST PARKING A

ADJACENT TO ROUTE 0202 (BASIN PLACE (EAST OUTER COVE ROAD)) ON RIGHT AT MP 0.13

Subcomponent Record

Route Number	Public / NonPublic	Date Visited	Area (sq ft)	Lane Miles *	Surface Type
0910AZ	PUBLIC	1/10/2012	7,387	0.13	AS
Culverts	Drop Inlets	Gates	Curb & Gutter	Curb	PCR
0	0	0	NO CURB AND GUTTER	NO CURB	POOR/45

* Lane miles are based on 11' lane widths



AMERICAN MEMORIAL PARK

Route 0910BZ

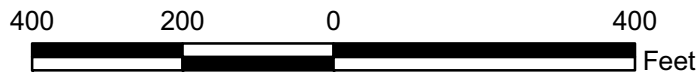
COVE EAST PARKING B

ADJACENT TO ROUTE 0202 (BASIN PLACE (EAST OUTER COVE ROAD)) ON RIGHT AT MP 0.03

Subcomponent Record

Route Number	Public / NonPublic	Date Visited	Area (sq ft)	Lane Miles *	Surface Type
0910BZ	PUBLIC	1/10/2012	666	0.01	AS
Culverts	Drop Inlets	Gates	Curb & Gutter	Curb	PCR
0	0	0	NO CURB AND GUTTER	NO CURB	POOR/45

* Lane miles are based on 11' lane widths



AMERICAN MEMORIAL PARK

Route 0911

MICRO BEACH OVERFLOW PARKING
FROM ROUTE 5600 (MICRO BEACH ROAD (NON NPS))
TO PARKING

Route Number	Public / NonPublic	Date Visited	Area (sq ft)	Lane Miles *	Surface Type
0911	PUBLIC	1/10/2012	50,305	0.87	CO
Culverts	Drop Inlets	Gates	Curb & Gutter	Curb	PCR
0	0	1	NO CURB AND GUTTER	CONCRETE CURB	POOR/45

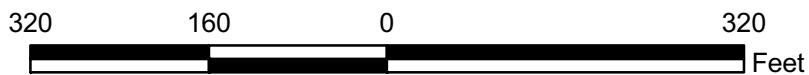
* Lane miles are based on 11' lane widths



Rte 0913



Rte 0904



AMERICAN MEMORIAL PARK

Route 0913

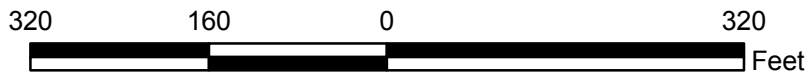
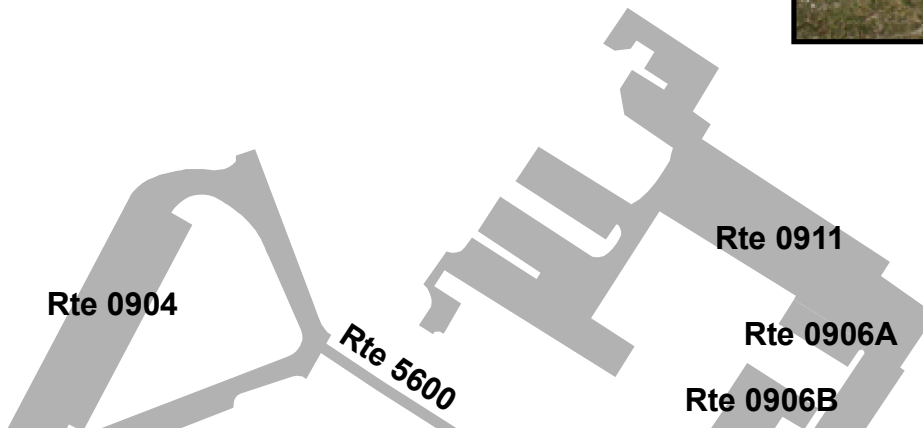
MICRO BEACH RESTROOM PAVED PARKING
 ADJACENT TO ROUTE 0010 (MICRO BEACH LOOP ROAD) ON RIGHT

Route Number	Public / NonPublic	Date Visited	Area (sq ft)	Lane Miles *	Surface Type
0913	PUBLIC	1/10/2012	1,133	0.02	CO
Culverts	Drop Inlets	Gates	Curb & Gutter	Curb	PCR
0	0	0	NO CURB AND GUTTER	NO CURB	GOOD/90

* Lane miles are based on 11' lane widths



Rte 0913



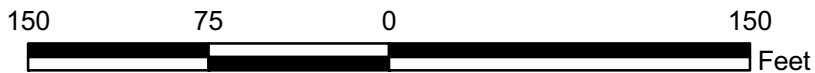
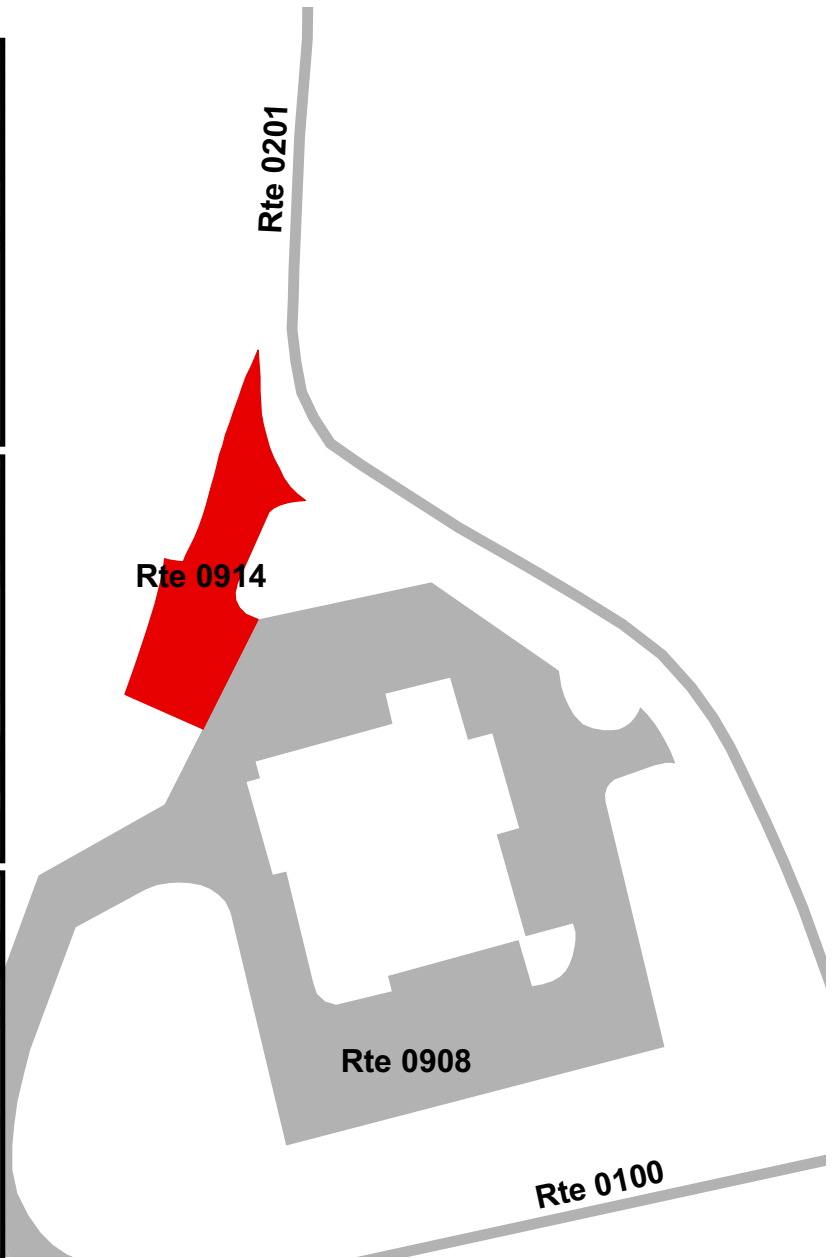
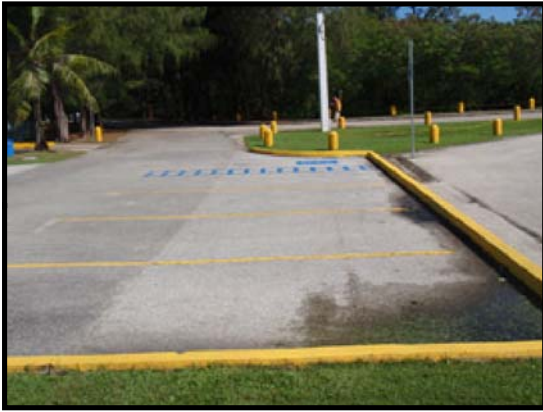
AMERICAN MEMORIAL PARK

Route 0914

SMILING COVE TRANSIENT DOCK PARKING
FROM ROUTE 0201 (MARINA LANE (OUTER COVE ROAD))
TO PARKING

Route Number	Public / NonPublic	Date Visited	Area (sq ft)	Lane Miles *	Surface Type
0914	PUBLIC	1/10/2012	3,848	0.07	AS
Culverts	Drop Inlets	Gates	Curb & Gutter	Curb	PCR
0	0	0	NO CURB AND GUTTER	CONCRETE CURB	GOOD/90

* Lane miles are based on 11' lane widths



Section 8

Parkwide/Route

Maintenance Features Summaries



American Memorial Park



AMME: PARKWIDE MAINTENANCE FEATURES SUMMARY

Notice: Only culverts, drop inlets, and gates were collected in parking areas.

FEATURE	LINEAR FEET	COUNT
BRIDGE	--	1
CATTLE GUARD	--	0
CULVERT	--	0
CURB	486	--
DROP INLET	--	5
GATE	--	7
GUARD/GUIDE RAIL	3643	--
CABLE	3643	--
NON-CABLE	0	--
GUARD/GUIDE WALL	1885	--
BOLLARD	1885	--
TEMPORARY BARRIER	0	--
NON TEMP/BOLLARD	0	--
INTERSECTION	--	22
LOW WATER CROSSING	0	0
MILE MARKER	--	0
OVERPASS	--	0
PARK BOUNDARY	--	0
PAVED DITCH	0	--
PULLOUT	0	0
RAILROAD CROSSING	--	0
RETAINING WALL	0	0
SIGN	--	32
STATE BOUNDARY	--	0
TRAFFIC LIGHT	--	0
TUNNEL	0	0

AMME: ROUTE MAINTENANCE FEATURES SUMMARY

FEATURE	ROUTE 0100 SMILING COVE ROAD	ROUTE 0201 MARINA LANE (OUTER COVE ROAD)	ROUTE 0202 BASIN PLACE (EAST OUTER COVE ROAD)	UNIT
BRIDGE	1	0	0	EACH
CATTLE GUARD	0	0	0	EACH
CULVERT	0	0	0	EACH
CURB	0	380	106	LINEAR FEET
DROP INLET	0	0	0	EACH
GATE	1	0	0	EACH
GUARD/GUIDE RAIL	2888	755	0	LINEAR FEET
CABLE	2888	755	0	LINEAR FEET
NON-CABLE	0	0	0	LINEAR FEET
GUARD/GUIDE WALL	0	961	924	LINEAR FEET
BOLLARD	0	961	924	LINEAR FEET
TEMPORARY BARRIER	0	0	0	LINEAR FEET
NON TEMP/BOLLARD	0	0	0	LINEAR FEET
INTERSECTION	7	9	6	EACH
LOW WATER CROSSING	0	0	0	EACH
LOW WATER CROSSING	0	0	0	LINEAR FEET
MILE MARKER	0	0	0	EACH
OVERPASS	0	0	0	EACH
PARK BOUNDARY	0	0	0	EACH
PAVED DITCH	0	0	0	LINEAR FEET
PULLOUT	0	0	0	EACH
PULLOUT	0	0	0	LINEAR FEET
RAILROAD CROSSING	0	0	0	EACH
RETAINING WALL	0	0	0	EACH
RETAINING WALL	0	0	0	LINEAR FEET
SIGN	20	6	6	EACH
STATE BOUNDARY	0	0	0	EACH
TRAFFIC LIGHT	0	0	0	EACH
TUNNEL	0	0	0	EACH
TUNNEL	0	0	0	LINEAR FEET

AMME: STRUCTURE LIST

No data available for this section.

Section 9
Route Maintenance Features
Road Logs



American Memorial Park



AMME: ROUTE MAINTENANCE FEATURES ROAD LOG
ROUTE 0100: SMILING COVE ROAD

FROM MILEPOST	TO MILEPOST	FEATURE	SIDE	COMMENT
0.000	0.000	ROUTE BEGIN	N/A	FROM PAVED ROUTE (CNMI ROUTE 323 (SMILING COVE ROAD) / NON NPS)
0.000	0.000	INTERSECTION	LEFT	PAVED ROUTE (CNMI ROUTE 323 (SMILING COVE ROAD) / NON NPS)
0.000	0.000	INTERSECTION	RIGHT	PAVED ROUTE (CNMI ROUTE 323 (SMILING COVE ROAD) / NON NPS)
0.008	0.105	GUARD/GUIDE RAIL	LEFT	N/A
0.010	0.010	SIGN	LEFT	GUIDE, AMERICAN MEMORIAL PARK
0.017	0.017	SIGN	RIGHT	REGULATORY, STOP
0.023	0.023	INTERSECTION	RIGHT	ROUTE 0100 (SMILING COVE ROAD) SPUR
0.023	0.451	GUARD/GUIDE RAIL	RIGHT	N/A
0.056	0.056	SIGN	RIGHT	REGULATORY, SPEED LIMIT 30
0.100	0.100	SIGN	RIGHT	ALL PETS MUST BE ON A LEASH; PLEASE CLEAN UP AFTER YOUR PET
0.100	0.100	SIGN	RIGHT	NO MOTORIZED VEHICLES
0.254	0.254	BRIDGE START	N/A	A BIP STRUCTURE NUMBER HAS NOT BEEN ASSIGNED TO THIS BRIDGE
0.260	0.260	BRIDGE END	N/A	A BIP STRUCTURE NUMBER HAS NOT BEEN ASSIGNED TO THIS BRIDGE
0.270	0.270	INTERSECTION	RIGHT	ROUTE 0201 (MARINA LANE (OUTER COVE ROAD))
0.300	0.300	SIGN	LEFT	REGULATORY, SPEED LIMIT 30
0.300	0.300	SIGN	RIGHT	REGULATORY, NO PARKING
0.332	0.332	INTERSECTION	RIGHT	ROUTE 0908 (POLICE STATION (BOATING SAFETY) PARKING)
0.347	0.347	INTERSECTION	RIGHT	ROUTE 0900 (MARINA AREA PAVED PARKING)
0.352	0.352	SIGN	LEFT	REGULATORY, NO PARKING
0.352	0.352	SIGN	RIGHT	REGULATORY, NO PARKING
0.358	0.358	SIGN	RIGHT	WARNING, GRAPHIC SIGN, NO TEXT
0.358	0.358	SIGN	RIGHT	REGULATORY, SPEED LIMIT 10
0.358	0.358	SIGN	RIGHT	REGULATORY, NO PARKING ANY TIME
0.358	0.358	SIGN	RIGHT	GUIDE, KEEP SAIPAN BEAUTIFUL
0.363	0.363	SIGN	RIGHT	REGULATORY, NO PARKING
0.376	0.376	SIGN	RIGHT	REGULATORY, NO PARKING
0.389	0.389	SIGN	RIGHT	REGULATORY, NO PARKING
0.419	0.419	SIGN	RIGHT	REGULATORY, NO PARKING
0.440	0.462	GUARD/GUIDE RAIL	LEFT	N/A
0.458	0.458	GATE	LEFT	GATE
0.458	0.458	SIGN	LEFT	REGULATORY, DO NOT ENTER; UNAUTHORIZED CARS WILL BE TOWED AWAY AT VEHICLE OWNER'S EXPENSE
0.461	0.461	SIGN	LEFT	ALL PETS MUST BE ON A LEASH; PLEASE CLEAN UP AFTER YOUR PET
0.461	0.461	SIGN	LEFT	NO MOTORIZED VEHICLES
0.462	0.462	INTERSECTION	N/A	ROUTE 0900 (MARINA AREA PAVED PARKING)
0.462	0.462	ROUTE END	N/A	TO ROUTE 0900 (MARINA AREA PAVED PARKING)

AMME: ROUTE MAINTENANCE FEATURES ROAD LOG
ROUTE 0201: MARINA LANE (OUTER COVE ROAD)

FROM MILEPOST	TO MILEPOST	FEATURE	SIDE	COMMENT
0.000	0.000	ROUTE BEGIN	N/A	FROM ROUTE 0100 (SMILING COVE ROAD)
0.000	0.000	INTERSECTION	LEFT	ROUTE 0100 (SMILING COVE ROAD)
0.000	0.000	INTERSECTION	RIGHT	ROUTE 0100 (SMILING COVE ROAD)
0.007	0.069	GUARD/GUIDE RAIL	LEFT	N/A
0.009	0.009	SIGN	LEFT	REGULATORY, STOP
0.009	0.081	GUARD/GUIDE RAIL	RIGHT	N/A
0.009	0.081	CURB	RIGHT	CONCRETE CURB ON RIGHT
0.035	0.035	INTERSECTION	LEFT	ROUTE 0908 (POLICE STATION (BOATING SAFETY) PARKING)
0.073	0.073	INTERSECTION	LEFT	ROUTE 0914 (SMILING COVE TRANSIENT DOCK PARKING)
0.075	0.075	SIGN	LEFT	REGULATORY, NO FISHING
0.075	0.075	SIGN	LEFT	GUIDE, TRANSIENT DOCK; UNATTENDED VESSELS AND VESSELS DOCKED WITHOUT AUTHORIZATION WILL BE REMOVED
0.078	0.078	SIGN	LEFT	REGULATORY, NO PARKING ANY TIME
0.091	0.228	GUARD/GUIDE WALL	LEFT	N/A
0.228	0.228	INTERSECTION	RIGHT	ROUTE 0202 (BASIN PLACE (EAST OUTER COVE ROAD))
0.242	0.242	SIGN	RIGHT	GUIDE, OUTER COVE MARINA AND PUBLIC PARK
0.250	0.250	INTERSECTION	RIGHT	ROUTE 0909 (COVE HANDICAPPED PARKING)
0.257	0.276	GUARD/GUIDE WALL	RIGHT	N/A
0.290	0.290	INTERSECTION	RIGHT	ROUTE 0912 (MARINA AREA UNPAVED PARKING)
0.300	0.300	INTERSECTION	LEFT	ROUTE 0901 (MARINA COVE PARKING (UNPAVED))
0.341	0.367	GUARD/GUIDE WALL	RIGHT	N/A
0.355	0.355	SIGN	RIGHT	REGULATORY, NO FISHING SWIMMING
0.358	0.367	GUARD/GUIDE RAIL	LEFT	N/A
0.367	0.367	INTERSECTION	N/A	DEAD END
0.367	0.367	ROUTE END	N/A	TO DEAD END

AMME: ROUTE MAINTENANCE FEATURES ROAD LOG
ROUTE 0202: BASIN PLACE (EAST OUTER COVE ROAD)

FROM MILEPOST	TO MILEPOST	FEATURE	SIDE	COMMENT
0.000	0.000	ROUTE BEGIN	N/A	FROM ROUTE 0201 (MARINA LANE (OUTER COVE ROAD))
0.000	0.000	INTERSECTION	RIGHT	ROUTE 0201 (MARINA LANE (OUTER COVE ROAD))
0.000	0.000	INTERSECTION	LEFT	ROUTE 0201 (MARINA LANE (OUTER COVE ROAD))
0.000	0.020	CURB	LEFT	CONCRETE CURB ON LEFT
0.021	0.021	INTERSECTION	LEFT	PAVED DRIVEWAY
0.034	0.034	INTERSECTION	RIGHT	ROUTE 0910BZ (COVE EAST PARKING B)
0.039	0.187	GUARD/GUIDE WALL	LEFT	N/A
0.039	0.039	SIGN	LEFT	REGULATORY, NO PARKING ANY TIME
0.078	0.078	SIGN	LEFT	REGULATORY, NO PARKING ANY TIME
0.115	0.115	SIGN	LEFT	REGULATORY, NO PARKING ANY TIME
0.125	0.125	INTERSECTION	RIGHT	ROUTE 0910AZ (COVE EAST PARKING A)
0.154	0.154	SIGN	LEFT	REGULATORY, NO PARKING ANY TIME
0.160	0.187	GUARD/GUIDE WALL	RIGHT	N/A
0.161	0.161	SIGN	LEFT	REGULATORY, NO PARKING BEYOND THIS SIGN
0.161	0.161	SIGN	RIGHT	REGULATORY, NO PARKING BEYOND THIS SIGN
0.187	0.187	INTERSECTION	N/A	DEAD END AT OCEAN
0.187	0.187	ROUTE END	N/A	TO DEAD END

Section 10 Appendix



American Memorial Park



Federal Lands Highway
Road Inventory Program

GLOSSARY OF TERMS AND ABBREVIATIONS

<u>TERM OR ABBREVIATION</u>	<u>DESCRIPTION OR DEFINITION</u>
Excellent	Excellent rating with an index value of 97
Fair	Fair rating with an index value of 73
Func. Class	Functional Classification (see Route ID, Section 2)
Good	Good rating with an index value of 90
MRR	Manually Rated Route
MRL	Manually Rated Line
MRP	Manually Rated Polygon
N/A	Not Applicable
NC	Not Collected
PKG	Parking Area
Poor	Poor rating with an index value of 45

GPS on Manually Rated Roads (MRR)

Parking areas, some roads, and other paved areas that are not fully drivable with the RIP Data Collection Vehicle are collected manually by field technicians. GPS is collected for these routes using portable Trimble GPS backpack units.

Geodatabase – Background and Metadata

In addition to this park report, a *geodatabase* containing both tabular and spatial data specific to this park has been provided. All data disseminated in the preceding report has been obtained from the tables and fields within said geodatabase. The geodatabase can be referenced for tabular data via Microsoft Access or for both tabular and spatial data via ESRI's ArcGIS Suite of software which consists of; ArcMap, ArcCatalog and ArcExplorer. Consolidating the RIP data into one database creates a seamless relationship of tables and geographic data. It will allow RIP to facilitate easier updates and enhancements in the future.

A geodatabase can be thought of as simply a database containing spatial data. Many different tables are contained with the park's geodatabase. A complete and thorough description of the tables and fields contained within this geodatabase can be found in the *metadata*. The metadata is attached directly within the geodatabase and can be accessed via ESRI's ArcCatalog.