



Federal Lands Highway Road Inventory Program

Cycle 5 Road Inventory Report



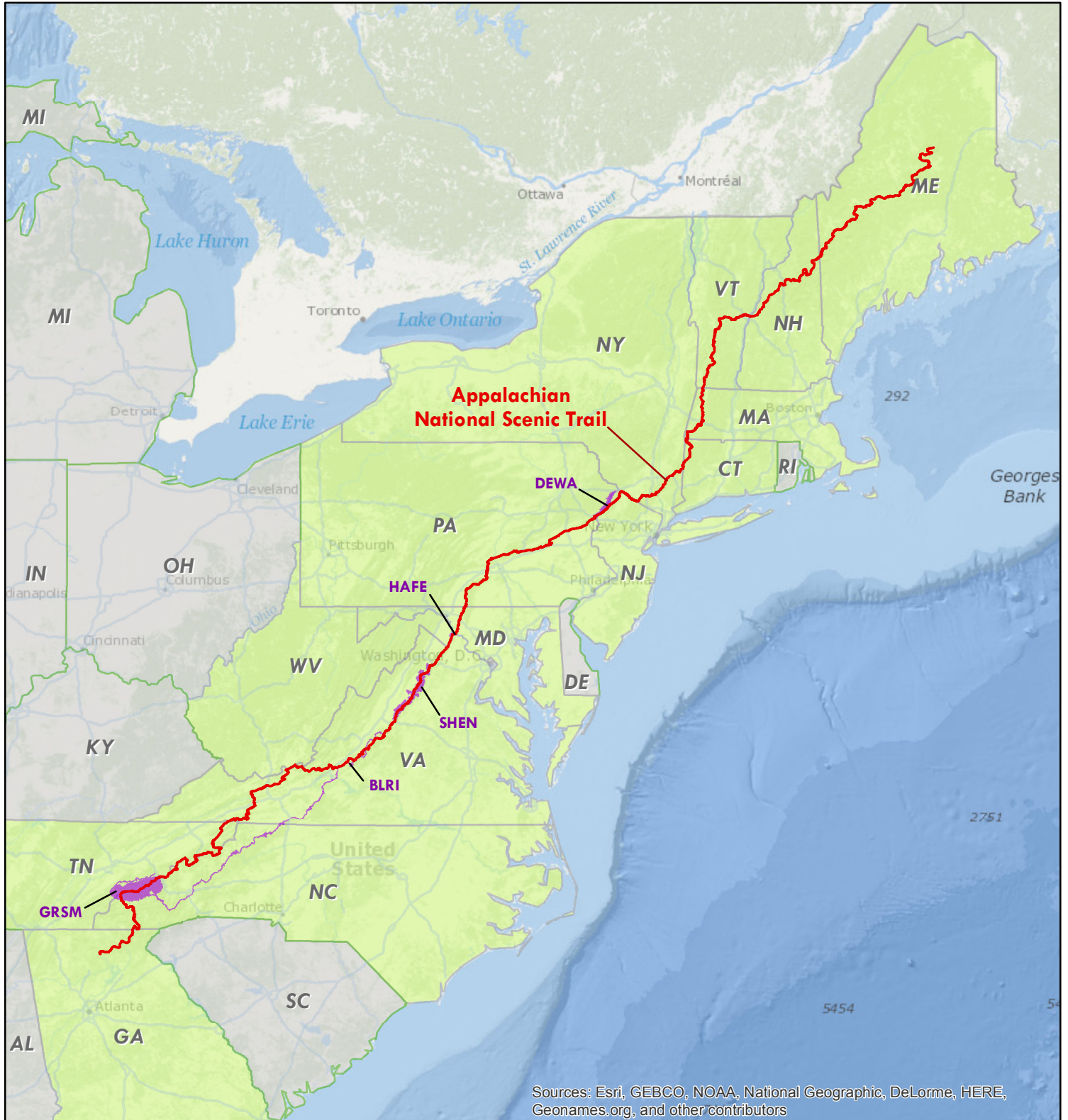
Appalachian National Scenic Trail APPA



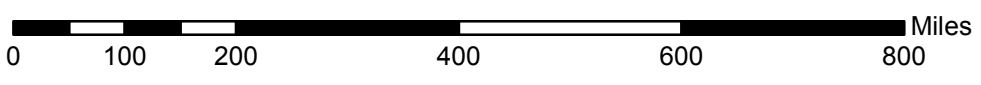
Reported By: Federal Highway Administration
Road Inventory Program (RIP)
Inventory Updated: 04/2015

Appalachian National Scenic Trail located in 14 States

CT, GA, MA, MD, ME, NC, NH, NJ, NY, PA, TN, VA, VT, WV



Sources: Esri, GEBCO, NOAA, National Geographic, DeLorme, HERE, Geonames.org, and other contributors



Cycle 5 NPS/RIP Route ID Report

Road Inventory Program 04/07/2015

(Numerical By Route #)

Shading Color Key:
Red text denotes approx. mileage

White = Paved Routes, DCV Driven

Yellow = Unpaved Routes, DCV not Driven

Blue = All Paved Parking Areas

Green = All Unpaved Parking Areas

Grey = Paved Routes, DCV not Driven

Black = State, Local or Private non-NPS Routes

■ = Concession Route Flag ON

*Unpaved route data was obtained from NPS and was not inventoried by the Road Inventory Program (RIP).

** DCV - Data Collection Vehicle

NC - Not Collected

APPA routes were inventoried with consecutive route numbers that increase from North to South along the trail . Routes that are also inventoried in GRSM, BLRI, SHEN, HAFE, and DEWA parks likely have different route numbers in their corresponding park Route ID Reports . Route ID information that overlaps between APPA and another park is included at the end of the APPA Route ID list in this report .

APPA

APPALACHIAN NATIONAL SCENIC TRAIL

Rte. No.	Cycle Collected	FMSS No.	Concess Route	Route Name	Route Description From To	NPS APPA MATCH	Paved Miles	Un-Paved Miles	Total Route Length	Func. Class	Manual Rated SQ/FT	Surf. Type	Area Maps
0916	NC			STRATTON-BROOK POND	ADJACENT TO STRATTON-BROOK POND ROAD	PK473	0.00	0.00	0.00			GR	1A
0917	NC			CARIBOU VALLEY ROAD PARKING	FROM CARIBOU POND ROAD TO PARKING	PK148	0.00	0.00	0.00		220	NV	1A
0918	NC	105896		ME 4	FROM MAIN ROUTE 4 TO PARKING	PK412	0.00	0.00	0.00		5,400	GR	1A
0919	NC			HEIGHT OF LAND (ME 17)	ADJACENT TO MAINE ROUTE 17	PK474	0.00	0.00	0.00			GR	1A
0920	NC			SOUTH ARM ROAD PARKING	ADJACENT TO SOUTH ARM ROAD	PK475	0.00	0.00	0.00			GR	1A
0921	NC			EAST B HILL ROAD PARKING	ADJACENT TO EAST B HILL ROAD	PK55	0.00	0.00	0.00		2,000	GR	1A
0922	NC	105897		NH 26 (GRAFTON NOTCH)	FROM NEW HAMPSHIRE ROUTE 26 TO PARKING	PK176	0.00	0.00	0.00		27,000	AS	1B
0923	NC			SPECK POND TRAILHEAD	ADJACENT TO SUCCESS POND ROAD	PK177	0.00	0.00	0.00			NV	1B
0924	NC			NOTCH TRAILHEAD	ADJACENT TO SUCCESS POND ROAD	PK178	0.00	0.00	0.00			NV	1B
0925	NC			CARLO COL TRAILHEAD	ADJACENT TO SUCCESS POND ROAD	PK476	0.00	0.00	0.00			NV	1B
0926	NC			SUCCESS TRAILHEAD	ADJACENT TO SUCCESS POND ROAD	PK477	0.00	0.00	0.00			NV	1B
0927	NC	105898		HOGAN ROAD PARKING	ADJACENT TO HOGAN ROAD	PK405	0.00	0.00	0.00		1,200	GR	1B
0928	NC	105899		U.S. 2 (RATTLE RIVER)	FROM U.S. ROUTE 2 TO PARKING	PK404	0.00	0.00	0.00		6,750	GR	1B
0929	NC			STONE BROOK TRAILHEAD	FROM STONY BROOK ROAD TO PARKING	PK279	0.00	0.00	0.00			GR	1B
0930	NC			PINKHAM NOTCH	FROM NEW HAMPSHIRE ROUTE 16 TO PARKING	PK278	0.00	0.00	0.00			GR	1B
0931	NC			MOUNT WASHINGTON AUTO ROAD PARKING	ADJACENT TO MOUNT WASHINGTON AUTO ROAD	PK275	0.00	0.00	0.00			AS	1B
0932	NC	105901		U.S. 302	ADJACENT TO US ROUTE 302	PK277	0.00	0.00	0.00			GR	1B

Cycle 5 NPS/RIP Route ID Report

Road Inventory Program 04/07/2015

(Numerical By Route #)

Shading Color Key:
Red text denotes approx. mileage

White = Paved Routes, DCV Driven

Yellow = Unpaved Routes, DCV not Driven

Blue = All Paved Parking Areas

Green = All Unpaved Parking Areas

Grey = Paved Routes, DCV not Driven

Black = State, Local or Private non-NPS Routes

■ = Concession Route Flag ON

*Unpaved route data was obtained from NPS and was not inventoried by the Road Inventory Program (RIP).

** DCV - Data Collection Vehicle

NC - Not Collected

APPA routes were inventoried with consecutive route numbers that increase from North to South along the trail . Routes that are also inventoried in GRSM, BLRI, SHEN, HAFE, and DEWA parks likely have different route numbers in their corresponding park Route ID Reports . Route ID information that overlaps between APPA and another park is included at the end of the APPA Route ID list in this report .

APPA

APPALACHIAN NATIONAL SCENIC TRAIL

Rte. No.	Cycle Collected	FMSS No.	Concess Route	Route Name	Route Description From To	NPS APPA MATCH	Paved Miles	Un-Paved Miles	Total Route Length	Func. Class	Manual Rated SQ/FT	Surf. Type	Area Maps
0949	NC			POMFRET	ADJACENT TO POMFRET ROAD	PK270	0.00	0.00	0.00			GR	1C
0950	NC	105910		VT 12	FROM TO VERMONT ROUTE 12 TO PARKING	PK60	0.00	0.00	0.00			GR	1C
0951	NC			THUNDER FALLS	FROM THUNDERING BROOK ROAD TO PARKING	PK267	0.00	0.00	0.00			OT	1C
0952	NC	93538		KILLINGTON AT/LT TRAILHEAD (U.S. 4)	FROM U.S. ROUTE 4 TO PARKING	PK295	0.00	0.00	0.00		9,000	GR	1C
0953	NC	105911		CLARENDON GORGE (VT 103)	FROM VERMONT ROUTE 103 TO PARKING	PK50	0.00	0.00	0.00		5,100	GR	1C
0954	NC			VT 140	FROM VERMONT ROUTE 140 TO PARKING	PK266	0.00	0.00	0.00			AS	1C
0955	NC	105913		DANBY-LANDGROVE ROAD, USFS 10 (NORTHBOUND)	FROM FORESTRY ROUTE 10 TO PARKING	PK292	0.00	0.00	0.00		7,500	AS	1C
0956	NC			DANBY-LANDGROVE ROAD, USFS 10 (SOUTHBOUND)	FROM FORESTRY ROUTE 10 TO PARKING	PK293	0.00	0.00	0.00		500	GR	1C
0957	NC			MAD TOM NOTCH (USFS 21)	FROM USFS21 TO PARKING	PK326	0.00	0.00	0.00		3,960	GR	1C
0958	NC	105916		VT 11 & 30	FROM VERMONT ROUTE 11 TO PARKING	PK61	0.00	0.00	0.00		9,000	AS	1C
0959	NC	105912		STRATTON POND TRAILHEAD	ADJACENT TO STRATTON ARLINGTON ROAD	PK262	0.00	0.00	0.00			GR	1C
0960	NC	105914		VT 9	FROM VERMONT ROUTE 9 TO PARKING	PK149	0.00	0.00	0.00		7,800	AS	1C
0961	NC	105936		PATTISON ROAD PARKING	ADJACENT TO PATTISON ROAD	PK299	0.00	0.00	0.00		600	GR	1C
0962	NC	105933		NOTCH ROAD PARKING	ADJACENT TO NOTCH ROAD	PK298	0.00	0.00	0.00		3,000	GR	1C
0963	NC	105917		MOUNT GREYLOCK (SUMMIT PARKING)	FROM NOTCH ROAD TO PARKING	PK261	0.00	0.00	0.00			AS	1C
0964	NC			GOULD TRAIL (DAY USE PARKING)	FROM ROCKWELL ROAD TO PARKING	PK297	0.00	0.00	0.00		1,000	GR	1C
0965	NC	105934		MOUNT GREYLOCK (DAY USE PARKING)	FROM ROCKWELL ROAD TO PARKING	PK296	0.00	0.00	0.00		1,600	GR	1C

Cycle 5 NPS/RIP Route ID Report

Road Inventory Program 04/07/2015

(Numerical By Route #)

Shading Color Key:
Red text denotes approx. mileage

White = Paved Routes, DCV Driven	Yellow = Unpaved Routes, DCV not Driven	Blue = All Paved Parking Areas	Green = All Unpaved Parking Areas
Grey = Paved Routes, DCV not Driven	Black = State, Local or Private non-NPS Routes	= Concession Route Flag ON	

*Unpaved route data was obtained from NPS and was not inventoried by the Road Inventory Program (RIP).

** DCV - Data Collection Vehicle NC - Not Collected

APPA routes were inventoried with consecutive route numbers that increase from North to South along the trail . Routes that are also inventoried in GRSM, BLRI, SHEN, HAFE, and DEWA parks likely have different route numbers in their corresponding park Route ID Reports . Route ID information that overlaps between APPA and another park is included at the end of the APPA Route ID list in this report .

APPA

APPALACHIAN NATIONAL SCENIC TRAIL

Rte. No.	Cycle Collected	FMSS No.	Concess Route	Route Name	Route Description From To	NPS APPA MATCH	Paved Miles	Un-Paved Miles	Total Route Length	Func. Class	Manual Rated SQ/FT	Surf. Type	Area Maps
1117	NC			GUTSHALL ROAD PARKING	FROM GUTSHALL ROAD TO PARKING	PK315	0.00	0.00	0.00			OT	2C
1118	NC			WHITE ROCKS TRAILHEAD	FROM KUHN ROAD TO PARKING	PK498	0.00	0.00	0.00			GR	2C
1119	NC			WHISKEY SPRINGS ROAD PARKING	ADJACENT TO WHISKEY SPRINGS ROAD	PK240	0.00	0.00	0.00			GR	2C
1120	NC	106001		SHEET IRON ROOF ROAD PARKING	ADJACENT TO SHEET IRON ROOF ROAD	PK22	0.00	0.00	0.00		1,000	GR	2C
1121	NC	101913		PA 34 (HUNTER'S RUN)	FROM PA ROUTE 34 TO PARKING	PK289	0.00	0.00	0.00		3,850	GR	2D
1122	NC			GREEN MOUNTAIN ROAD (TAGG RUN)	FROM GREEN MOUNTAIN ROAD TO PARKING	PK288	0.00	0.00	0.00		200	GR	2D
1123	NC			PINE GROVE FURNACE STATE PARK (POLE STEEPLE)	FROM RAILROAD BED ROAD TO PARKING	PK24	0.00	0.00	0.00		1,500	GR	2D
1124	NC	0		PINE GROVE FURNACE STATE PARK (OLD RAILROAD BED ROAD 2)	ADJACENT TO RAILROAD BED ROAD	PK25	0.00	0.00	0.00		2,400	GR	2D
1125	NC			PINE GROVE FURNACE STATE PARK	ADJACENT TO COLLIER LANE	PK290	0.00	0.00	0.00		15,000	OT	2D
1126	NC			PINE GROVE FURNACE STATE PARK	FROM PA ROUTE 233 TO PARKING	PK26	0.00	0.00	0.00		6,000	GR	2D
1127	NC			PINE GROVE FURNACE STATE PARK	FROM PA ROUTE 233 TO PARKING	PK27	0.00	0.00	0.00		2,400	GR	2D
1128	NC			PA 233	FROM PA ROUTE 233 TO PARKING	PK244	0.00	0.00	0.00			NV	2D
1129	NC			BUNKER HILL ROAD PARKING	FROM BUNKER HILL ROAD TO PARKING	PK314	0.00	0.00	0.00			OT	2D
1130	NC			MICHAUX ROAD PARKING	ADJACENT TO MICHAUX ROAD	PK496	0.00	0.00	0.00			GR	2D
1131	NC	106003		DEAD WOMAN'S HOLLOW	ADJACENT TO DEAD WOMAN'S HOLLOW ROAD	PK28	0.00	0.00	0.00		900	GR	2D
1132	NC	106004		SHIPPENSBURG-AREND TSVILLE ROAD (BIG FLAT)	FROM SHIPPENSBURG ROAD TO PARKING	PK29	0.00	0.00	0.00		3,600	NV	2D

Cycle 5 NPS/RIP Route ID Report

Road Inventory Program 04/07/2015

(Numerical By Route #)

Shading Color Key:
Red text denotes approx. mileage

White = Paved Routes, DCV Driven
Grey = Paved Routes, DCV not Driven

Yellow = Unpaved Routes, DCV not Driven
Black = State, Local or Private non-NPS Routes

Blue = All Paved Parking Areas
Red = Concession Route Flag ON

Green = All Unpaved Parking Areas

*Unpaved route data was obtained from NPS and was not inventoried by the Road Inventory Program (RIP).

** DCV - Data Collection Vehicle NC - Not Collected

APPA routes were inventoried with consecutive route numbers that increase from North to South along the trail . Routes that are also inventoried in GRSM, BLRI, SHEN, HAFE, and DEWA parks likely have different route numbers in their corresponding park Route ID Reports . Route ID information that overlaps between APPA and another park is included at the end of the APPA Route ID list in this report .

APPA

APPALACHIAN NATIONAL SCENIC TRAIL

Rte. No.	Cycle Collected	FMSS No.	Concess Route	Route Name	From	To	NPS APPA MATCH	Paved Miles	Un-Paved Miles	Total Route Length	Func. Class	Manual Rated SQ/FT	Surf. Type	Area Maps
1204	NC			SEE SHEN-0944			PK443	0.00	0.00	0.00			AS	2E
1205	NC			SEE SHEN-0945			PK444	0.00	0.00	0.00			AS	2E
1206	NC			SEE SHEN-0946			PK450	0.00	0.00	0.00			AS	2E
1207	NC			SKYLINE DRIVE (WILDCAT RIDGE)	FROM SKYLINE DRIVE	TO PARKING	PK449	0.00	0.00	0.00		300	GR	2E
1208	NC			SEE SHEN-0948			PK448	0.00	0.00	0.00			AS	2E
1209	NC			SEE SHEN-1065			PK447	0.00	0.00	0.00			AS	2E
1210	NC			SEE SHEN-1078			PK446	0.00	0.00	0.00			GR	2E
1211	NC			SKYLINE DRIVE (MCCORMICK GAP)	FROM SKYLINE DRIVE	TO PARKING	PK194	0.00	0.00	0.00			NV	2E
1212	NC			SEE BLRI-1252			PK459	0.00	0.00	0.00			AS	3A
1213	NC			SEE BLRI-0904			PK195	0.00	0.00	0.00			AS	3A
1214	NC			SEE BLRI-1244ZZ			PK183	0.00	0.00	0.00			AS	3A
1215	NC			SEE BLRI-1243			PK320	0.00	0.00	0.00			AS	3A
1216	NC			SEE BLRI-0908			PK319	0.00	0.00	0.00			AS	3A
1217	NC			SEE BLRI-1254			PK318	0.00	0.00	0.00			GR	3A
1218	NC	106021		TYE RIVER (VA 56)	FROM VA ROUTE 56	TO PARKING	PK93	0.00	0.00	0.00		4,050	GR	3A
1219	NC			USFS 263	FROM USFS 263	TO PARKING	PK537	0.00	0.00	0.00			GR	3A
1220	NC			HATCHERY TRAILHEAD PARKING	FROM VA ROUTE 822	TO PARKING	PK462	0.00	0.00	0.00		2,500	GR	3A
1221	NC			SALT LOG GAP (USFS 63/48)	FROM VA ROUTE 634	TO PARKING	PK180	0.00	0.00	0.00			NV	3A
1222	NC	106020		HOG CAMP GAP (USFS 48)	FROM USFS 48	TO PARKING	PK181	0.00	0.00	0.00			GR	3A

APPALACHIAN NATIONAL SCENIC TRAIL CROSSWALK

THE FOLLOWING PARKING LOTS ARE OWNED AND MAINTAINED BY OTHER NATIONAL PARKS
 REFERENCE THE ASSOCIATED ROUTE ID TO OBTAIN SPECIFICS FOR THESE PARKING LOTS

ROUTE_IDENT	RTE_NAME
APPA-1161	SEE HAFE-0916
APPA-1162	SEE HAFE-0918
APPA-1176	SEE SHEN-0902
APPA-1177	SEE SHEN-0904
APPA-1178	SEE SHEN-0905
APPA-1179	SEE SHEN-1013
APPA-1180	SEE SHEN-0907
APPA-1181	SEE SHEN-0908
APPA-1183	SEE SHEN-1019
APPA-1184	SEE SHEN-0974
APPA-1185	SEE SHEN-0971
APPA-1186	SEE SHEN-1029
APPA-1188	SEE SHEN-0951
APPA-1189	SEE SHEN-0968
APPA-1190	SEE SHEN-1036
APPA-1191	SEE SHEN-0929
APPA-1192	SEE SHEN-0930
APPA-1193	SEE SHEN-0931
APPA-1195	SEE SHEN-1077
APPA-1196	SEE SHEN-0935
APPA-1199	SEE SHEN-1054
APPA-1200	SEE SHEN-0941
APPA-1201	SEE SHEN-1057
APPA-1202	SEE SHEN-0942
APPA-1203	SEE SHEN-0943
APPA-1204	SEE SHEN-0944
APPA-1205	SEE SHEN-0945
APPA-1206	SEE SHEN-0946
APPA-1208	SEE SHEN-0948
APPA-1209	SEE SHEN-1065
APPA-1210	SEE SHEN-1078

ROUTE_IDENT	RTE_NAME
APPA-1212	SEE BLRI-1252
APPA-1213	SEE BLRI-0904
APPA-1214	SEE BLRI-1244ZZ
APPA-1215	SEE BLRI-1243
APPA-1216	SEE BLRI-0908
APPA-1217	SEE BLRI-1254
APPA-1226	SEE BLRI-0921
APPA-1231	SEE BLRI-0938
APPA-1236	SEE BLRI-0954
APPA-1237	SEE BLRI-0956
APPA-1238	SEE BLRI-0957
APPA-1239	SEE BLRI-0959
APPA-1240	SEE BLRI-0960
APPA-1242	SEE BLRI-0459
APPA-1322	SEE GRSM-0955
APPA-1323	SEE GRSM-1154
APPA-1324	SEE GRSM-1161
APPA-1325	SEE GRSM-1015ZZ

Cycle 5 NPS/RIP Route ID Report

Road Inventory Program 04/07/2015

(Numerical By Route #)

Shading Color Key:
Red text denotes approx. mileage

White = Paved Routes, DCV Driven
Grey = Paved Routes, DCV not Driven

Yellow = Unpaved Routes, DCV not Driven
Black = State, Local or Private non-NPS Routes

Blue = All Paved Parking Areas
■ = Concession Route Flag ON

Green = All Unpaved Parking Areas

*Unpaved route data was obtained from NPS and was not inventoried by the Road Inventory Program (RIP).

** DCV - Data Collection Vehicle NC - Not Collected

APPA routes were inventoried with consecutive route numbers that increase from North to South along the trail . Routes that are also inventoried in GRSM, BLRI, SHEN, HAFE, and DEWA parks likely have different route numbers in their corresponding park Route ID Reports . Route ID information that overlaps between APPA and another park is included at the end of the APPA Route ID list in this report .

GRSM

GREAT SMOKY MOUNTAINS NATIONAL PARK

Rte. No.	Cycle Collected	FMSS No.	Concess Route	Route Name	Route Description		NPS APPA MATCH	Paved Miles	Un-Paved Miles	Total Route Length	Func. Class	Manual Rated SQ/FT	Surf. Type	Area Maps
					From	To								
0955	4	60079		NEWFOUND GAP PARKING AREA	FROM ROUTE 0010N (NEWFOUND GAP ROAD NORTH) AT MP 14.78 ON LEFT	TO ROUTE 0010N (NEWFOUND GAP ROAD NORTH) AT MP 14.83 ON LEFT	NORTH DISTRICT	0.00	0.00	0.00		71,198	AS	4C
1015ZZ	4	74478		CADES COVE PICNIC AREA PARKING AREAS	ADJACENT TO ROUTE 0202 (CADES COVE PICNIC AREA ROAD) ON LEFT AND RIGHT SIDES		CADES COVE DISTRICT	0.00	0.00	0.00		16,819	AS	4C
1154	4	60615		INDIAN GAP ROAD PARKING	FROM ROUTE 0017 (CLINGMANS DOME ACCESS ROAD) AT MP 1.27 ON RIGHT	TO ROUTE 0017 (CLINGMANS DOME ACCESS ROAD) AT MP 1.30 ON RIGHT	SOUTH DISTRICT	0.00	0.00	0.00		6,961	AS	4C
1161	5	60616		CLINGMANS DOME ROAD PRIMARY PARKING	FROM END OF ROUTE 0017 (CLINGMANS DOME ACCESS ROAD)	TO PARKING	SOUTH DISTRICT	0.00	0.00	0.00		85,527	AS	4C

Cycle 5 NPS/RIP Route ID Report

Road Inventory Program 04/07/2015

(Numerical By Route #)

Shading Color Key:
Red text denotes approx. mileage

White = Paved Routes, DCV Driven
Grey = Paved Routes, DCV not Driven

Yellow = Unpaved Routes, DCV not Driven
Black = State, Local or Private non-NPS Routes

Blue = All Paved Parking Areas
■ = Concession Route Flag ON

Green = All Unpaved Parking Areas

*Unpaved route data was obtained from NPS and was not inventoried by the Road Inventory Program (RIP).

** DCV - Data Collection Vehicle NC - Not Collected

APPA routes were inventoried with consecutive route numbers that increase from North to South along the trail . Routes that are also inventoried in GRSM, BLRI, SHEN, HAFE, and DEWA parks likely have different route numbers in their corresponding park Route ID Reports . Route ID information that overlaps between APPA and another park is included at the end of the APPA Route ID list in this report .

HAFE

HARPERS FERRY NATIONAL HISTORICAL PARK

Rte. No.	Cycle Collected	FMSS No.	Concess Route	Route Name	Route Description		NPS APPA MATCH	Paved Miles	Un-Paved Miles	Total Route Length	Func. Class	Manual Rated SQ/FT	Surf. Type	Area Maps
					From	To								
0916	5	3813		RIVER ACCESS PARKING	FROM ROUTE 0012 (SHENANDOAH STREET)	TO PARKING	LOWER TOWN	0.00	0.00	0.00		13,964	AS	2D
0918	5	3752		CAVALIER HEIGHTS PARKING	FROM ROUTE 0014 (SHORELINE DRIVE)	TO ROUTE 0926 (BUS MAINTENANCE PARKING)	CAVALIER HEIGHTS	0.00	0.00	0.00		216,398	AS	2D

Cycle 5 NPS/RIP Route ID Report

Shading Color Key:
Red text denotes approx. mileage

White = Paved Routes, DCV Driven	Yellow = Unpaved Routes, DCV not Driven	Blue = All Paved Parking Areas	Green = All Unpaved Parking Areas
Grey = Paved Routes, DCV not Driven	Black = State, Local or Private non-NPS Routes	■ = Concession Route Flag ON	

*Unpaved route data was obtained from NPS and was not inventoried by the Road Inventory Program (RIP).

** DCV - Data Collection Vehicle NC - Not Collected

General Park Road Functional Classification Table

- Class 1** Principal Park Road/Rural Parkway (Public Roads) Roads which constitute the main access route, circulatory tour, or thoroughfare for park visitors. Route Numbers 1 - 99. Note: Rural parkways (e.g. Natchez Trace) are numbered 1 - 9. State Routes Inventoried for Park. Route Numbers 5000-5999
- Class 2** Connector Park Road (Public Roads) - Roads which provide access within a park to areas of scenic, scientific, recreational or cultural interest, such as overlooks, campgrounds, etc. Route Numbers 100-199.
- Class 3** Special Purpose Park Road (Public Roads) - Roads which provide circulation within public areas, such as campgrounds, picnic areas, visitor center complexes, concessionaire facilities, etc. These roads generally serve low-speed traffic and are often designed for one-way circulation. Route Numbers 200-299.
- Class 4** Primitive Park Roads (Public Roads) - Roads which provide circulation through remote areas and/or access to primitive campgrounds and undeveloped areas. These roads frequently have no minimum design standards and their use may be limited to specially equipped vehicles. Route Numbers 200-299. Note: Functional Classes 3 and 4 have the same route numbers because, historically, they were numbered similarly.
- Class 5** Administrative Access Road (Administrative Roads) - All public roads intended for access to administrative developments or structures such as park offices, employee quarters, or utility areas. Route Numbers 400-499.
- Class 6** Restricted Road (Administrative Roads) - All roads normally closed to the public, including patrol roads, truck trails, and other similar roads. Route Numbers 400-499. Note: Functional Classes 5 and 6 have the same route numbers because historically they were numbered similarly and often there is little distinction between these routes. For example, because utility areas and employee housing are often closed to the public, this restriction would result in classification of FC 6 rather than FC 5.
- Class 7** Urban Parkway (Urban Parkways and City Streets) - These facilities serve high volumes of park and non-park related traffic and are restricted, limited-access facilities in an urban area. This category of roads primarily encompasses the major parkways which serve as gateways to our nation's capital. Other major park roads or portions thereof, however, may be included in this category. Route Numbers 1-9.
- Class 8** City Streets (Urban Parkways and City Streets) - City streets are usually extensions of the adjoining street system that are owned and maintained by the National Park Service. The construction and/or reconstruction should conform with accepted local engineering practice and local conditions. Route Numbers 600-699.

A park road system contains those roads within or giving access to a park or other unit of the NPS which are administered by the NPS, or by the Service in cooperation with other agencies. The assignment of a functional classification (FC) to a park road is not based on traffic volumes or design speed, but on the intended use or function of that road or route.

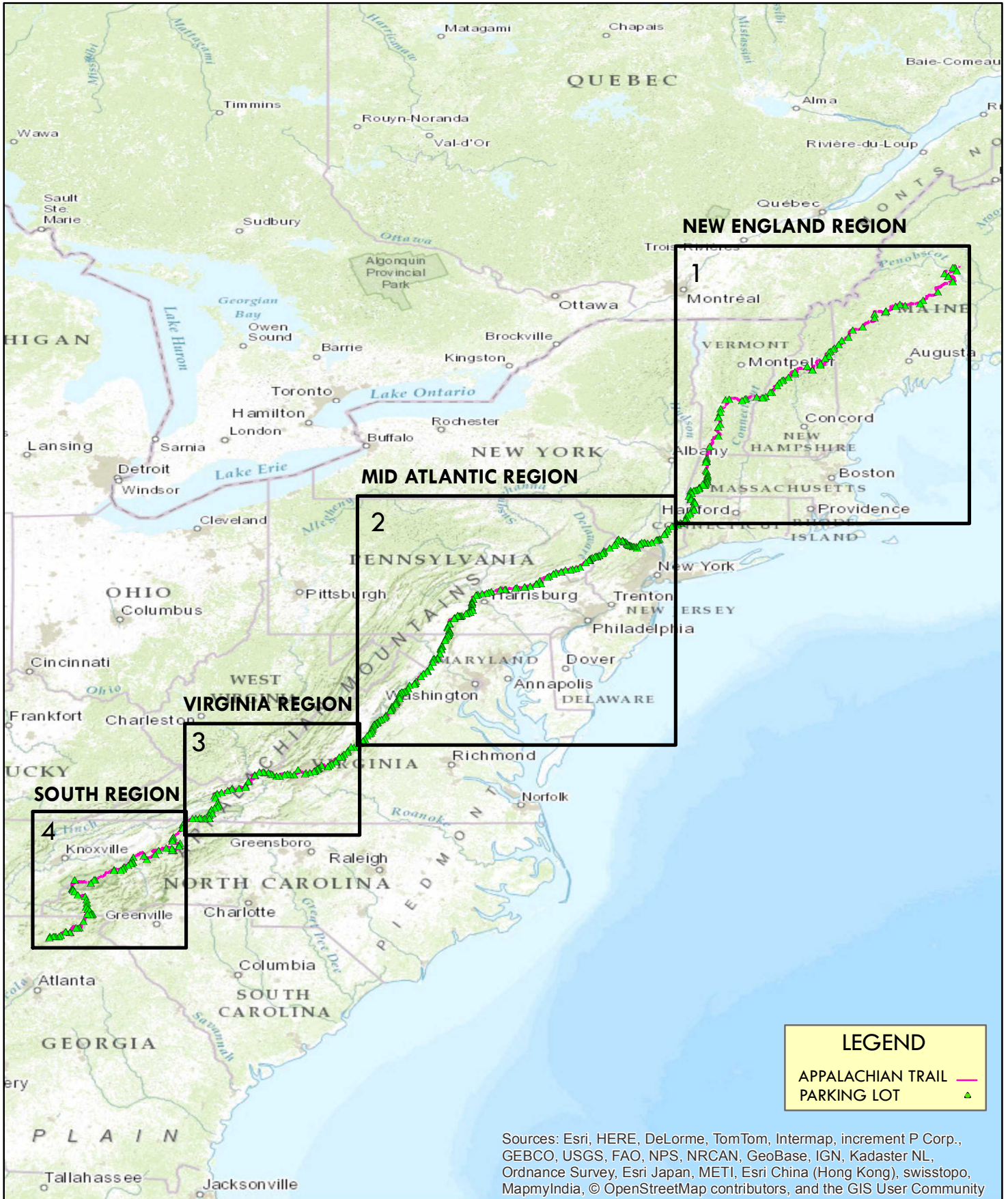
The historic route numbering system also included a 300 number series for interpretive roads, and a 500 series for one-way roads. There are approximately 250 roads nationwide which are designated by the 300 and 500 series. The numbers for these roads will be maintained for reporting consistency. However, since these interpretive and one-way routes are not as clearly tied to a specific functional class, the 300 and 500 series will be discontinued for future use.

5000 route numbers are assigned to Non-NPS Routes that are State, County or City owned which border, traverse, or provide access to Park Facilities or Locations. 5000 Routes are driven for GPS and Video Log only.

Surface Type Abbreviations:

- AS - Asphaltic Concrete Pavement**
- CO - Portland Cement Concrete Pavement**
- BR - Brick or Pavers Road Bed**
- CB - Cobble Stone Road Bed**
- GR - Gravel Road Bed**
- SA - Sand Road Bed**
- NV - Native or Dirt Material Road Bed**
- OT - Other Materials Road Bed**

APPALACHIAN NATIONAL SCENIC TRAIL KEY MAP

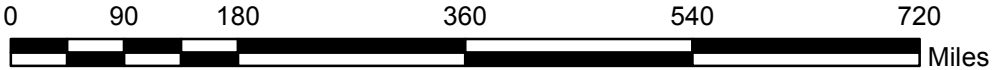


LEGEND

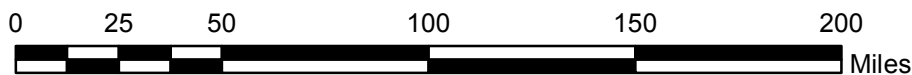
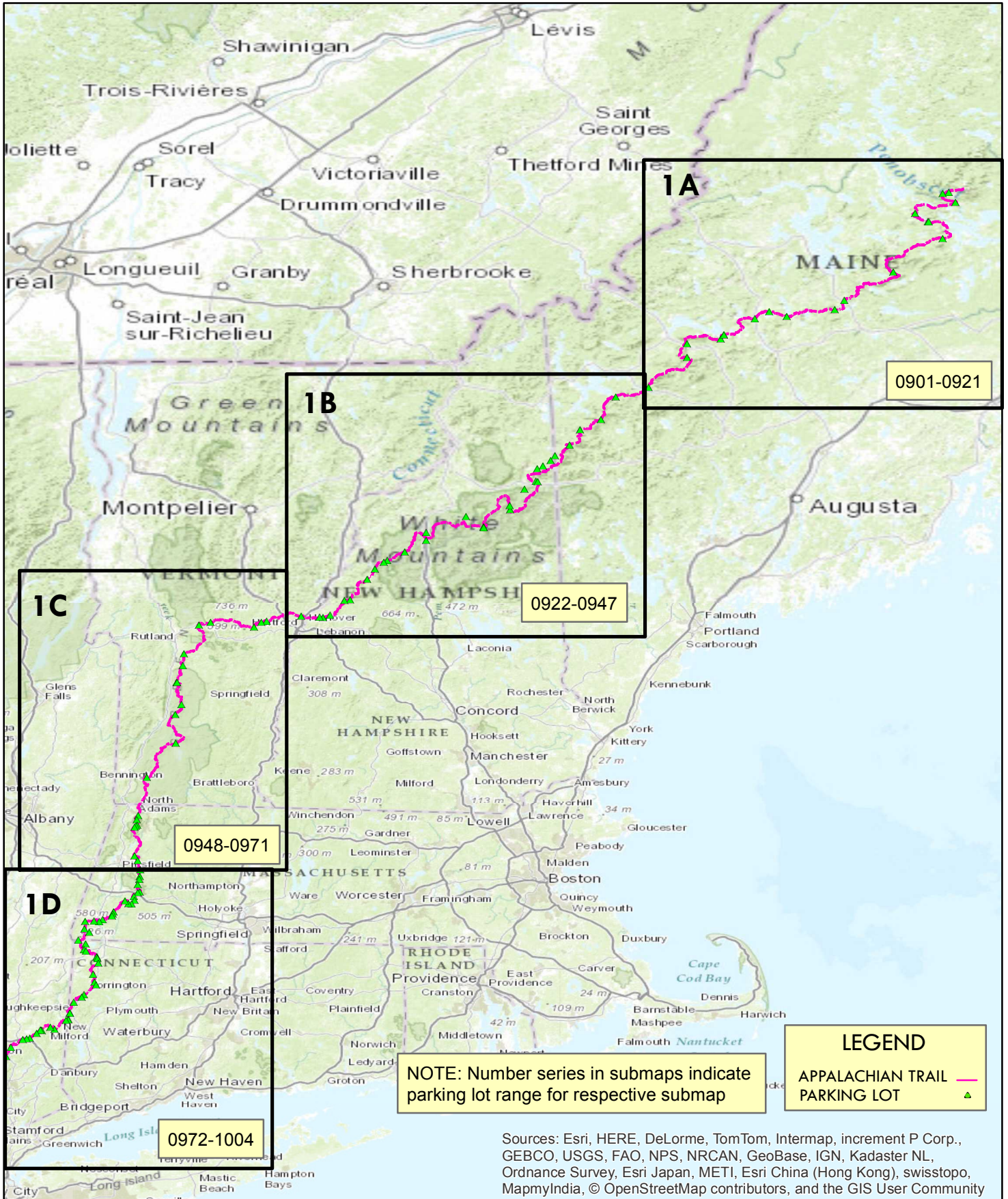
APPALACHIAN TRAIL ———

PARKING LOT ▲

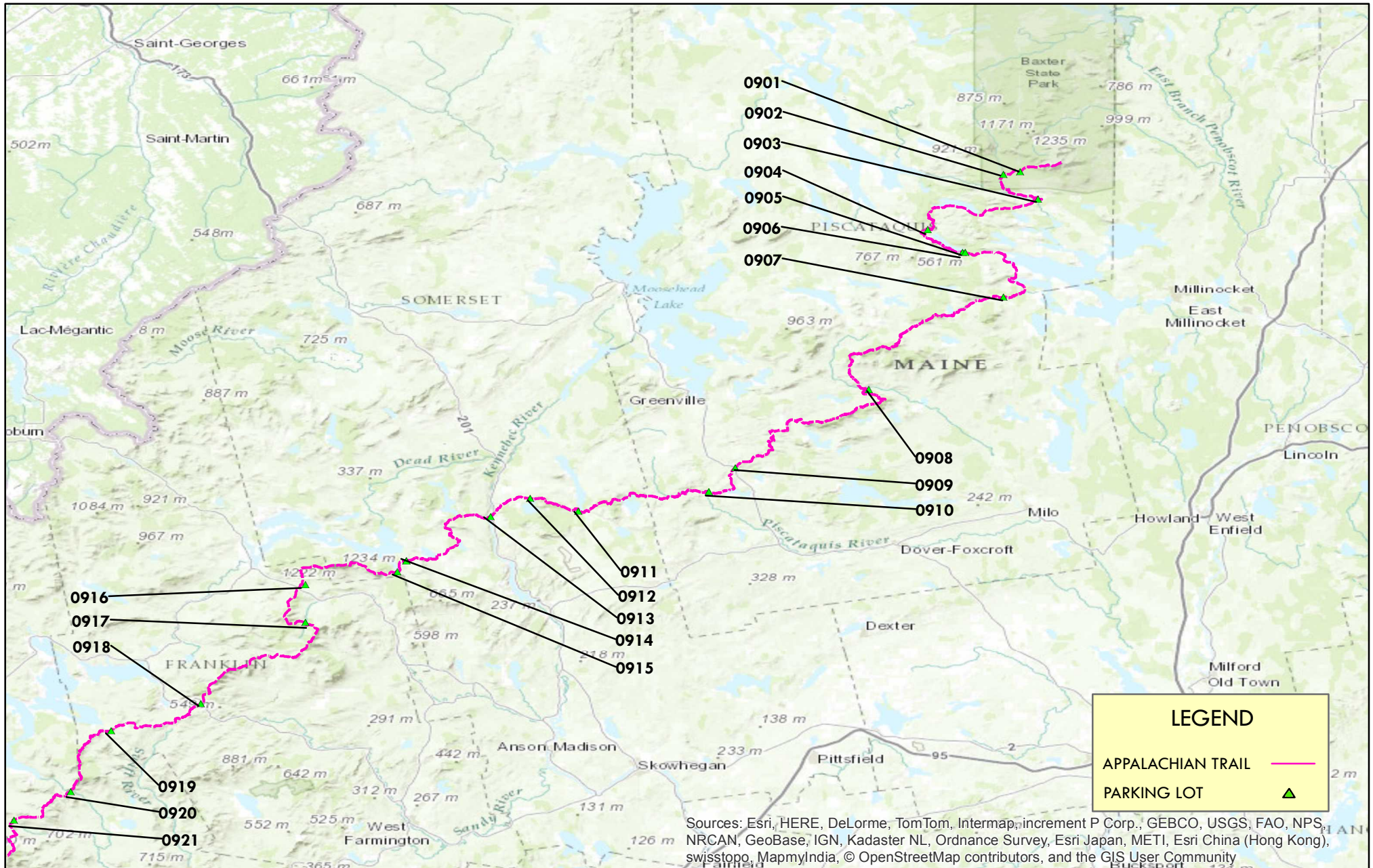
Sources: Esri, HERE, DeLorme, TomTom, Intermap, increment P Corp., GEBCO, USGS, FAO, NPS, NRCAN, GeoBase, IGN, Kadaster NL, Ordnance Survey, Esri Japan, METI, Esri China (Hong Kong), swisstopo, MapmyIndia, © OpenStreetMap contributors, and the GIS User Community




APPALACHIAN NATIONAL SCENIC TRAIL NEW ENGLAND REGION AREA - MAP 1




APPALACHIAN NATIONAL SCENIC TRAIL NEW ENGLAND REGION - MAP 1A

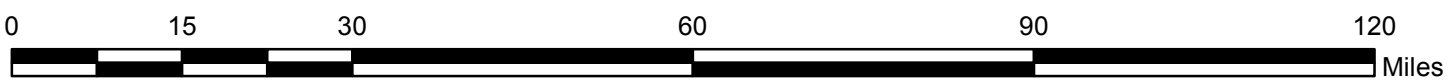


LEGEND

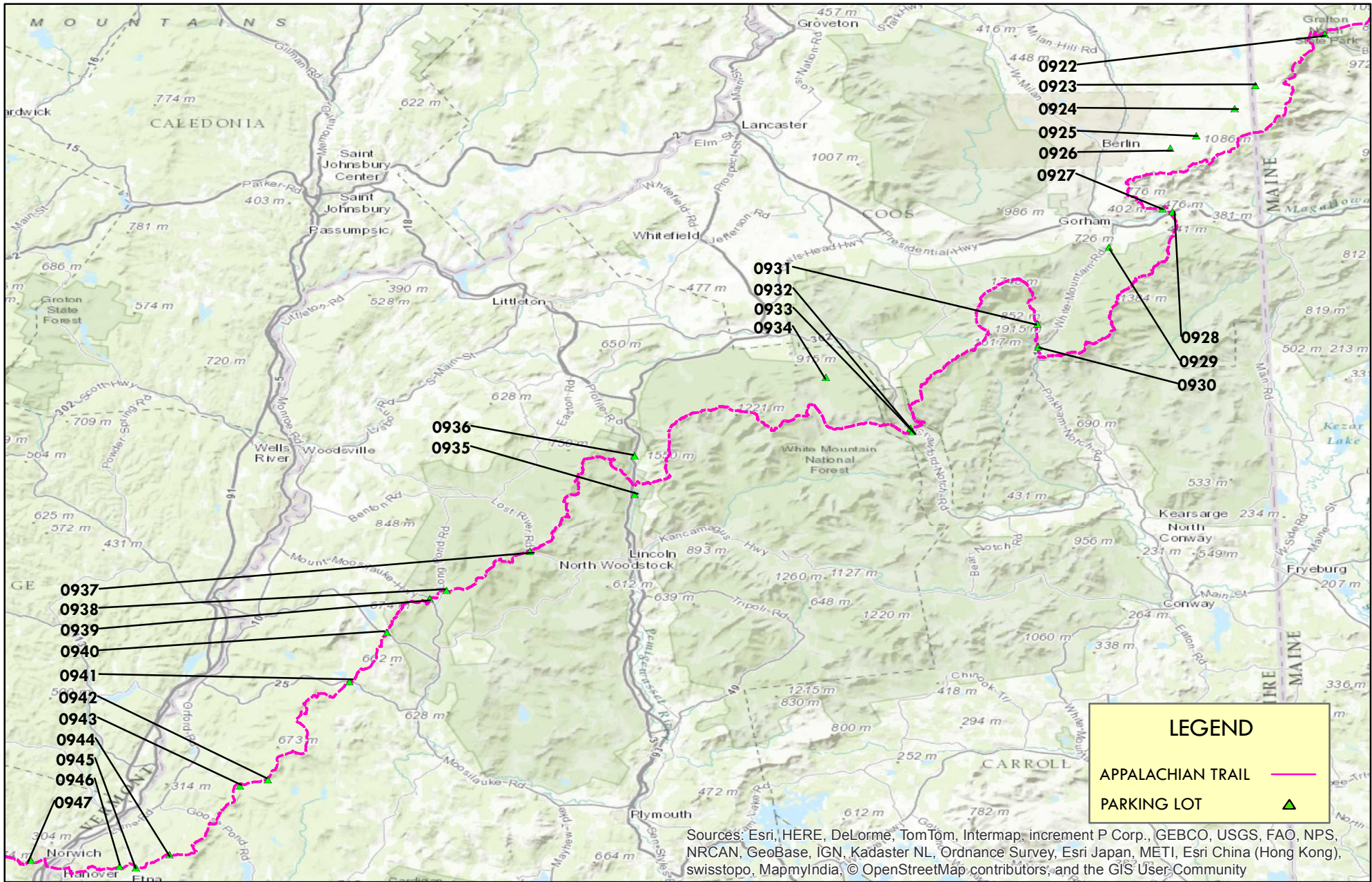
APPALACHIAN TRAIL 

PARKING LOT 

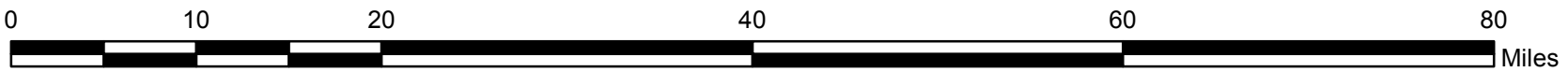
Sources: Esri, HERE, DeLorme, TomTom, Intermap, increment P Corp., GEBCO, USGS, FAO, NPS, NRCAN, GeoBase, IGN, Kadaster NL, Ordnance Survey, Esri Japan, METI, Esri China (Hong Kong), swisstopo, MapmyIndia, © OpenStreetMap contributors, and the GIS User Community



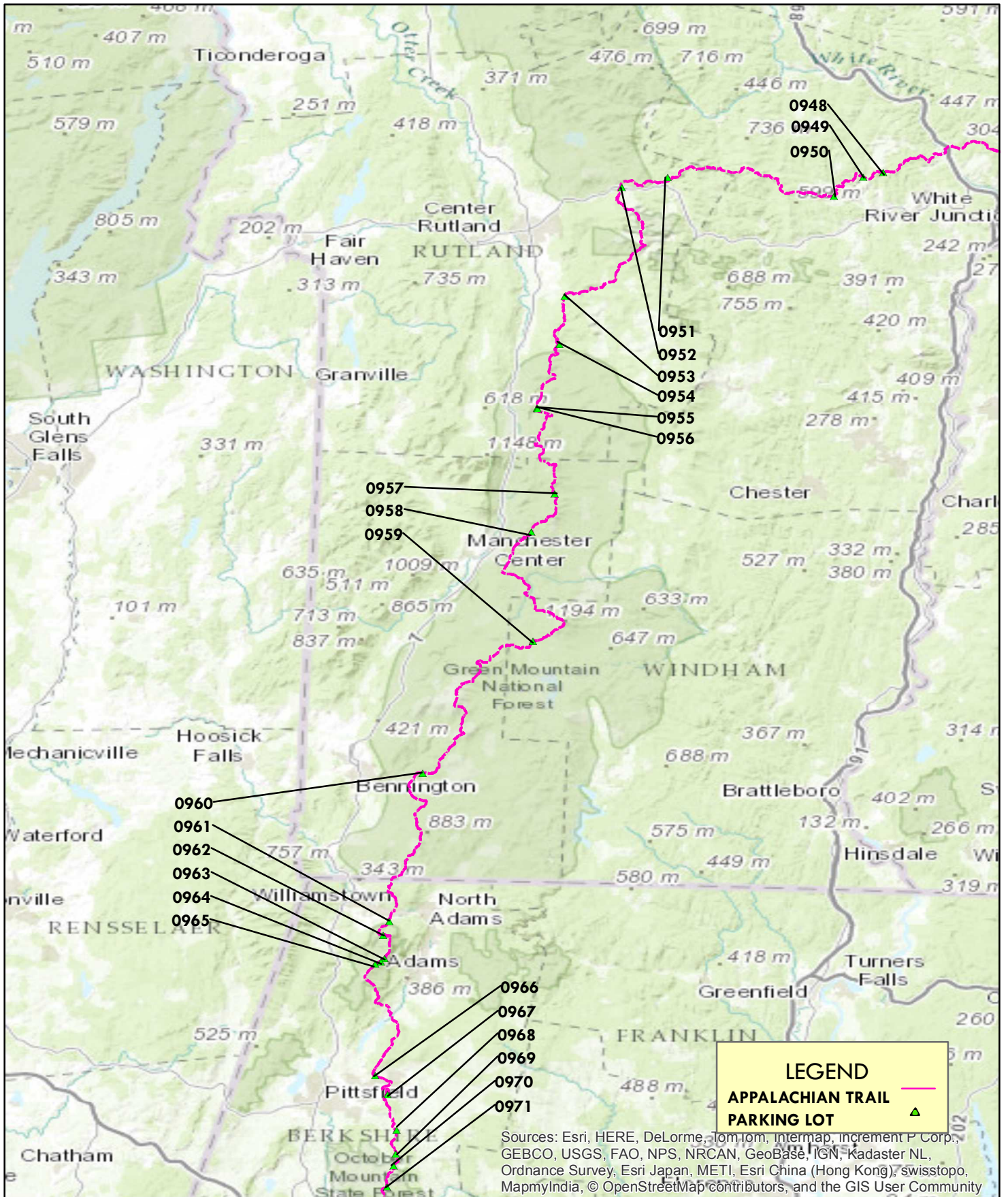
APPALACHIAN NATIONAL SCENIC TRAIL NEW ENGLAND REGION AREA - MAP 1 B



Sources: Esri, HERE, DeLorme, TomTom, Intermap, increment P Corp., GEBCO, USGS, FAO, NPS, NRCAN, GeoBase, IGN, Kadaster NL, Ordnance Survey, Esri Japan, METI, Esri China (Hong Kong), swisstopo, MapmyIndia, © OpenStreetMap contributors, and the GIS User Community

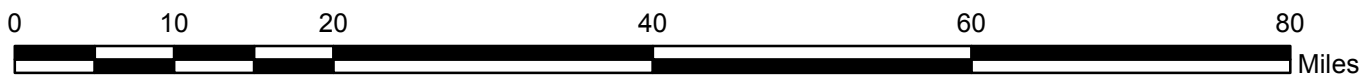


APPALACHIAN NATIONAL SCENIC TRAIL NEW ENGLAND REGION AREA - MAP 1C

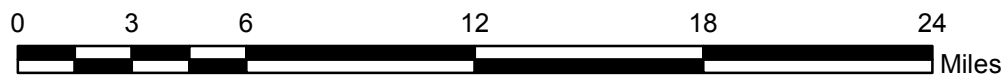
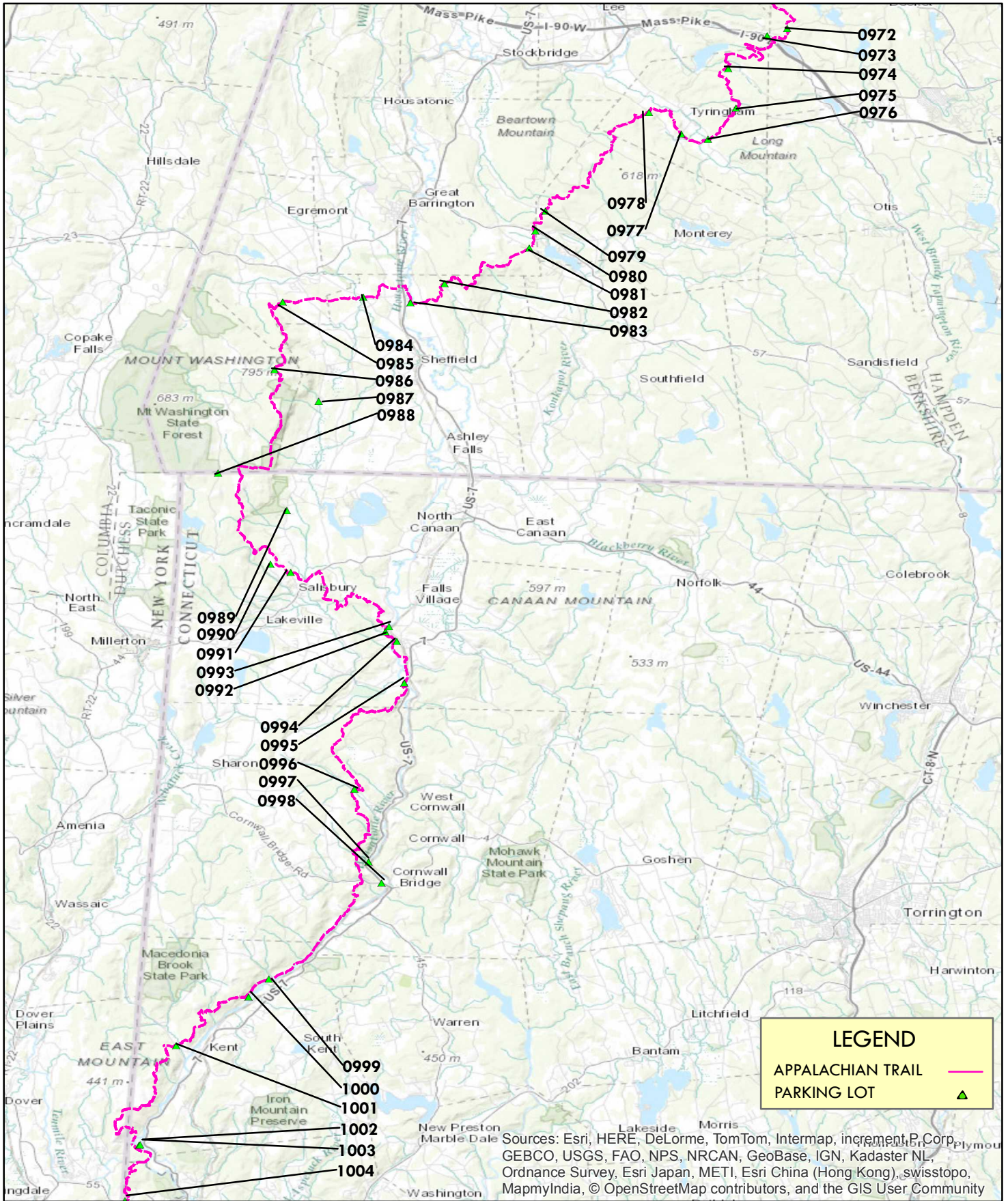


LEGEND
APPALACHIAN TRAIL ———
PARKING LOT ▲

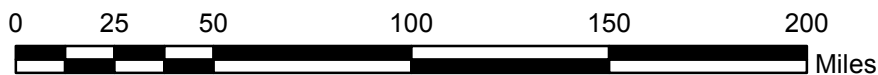
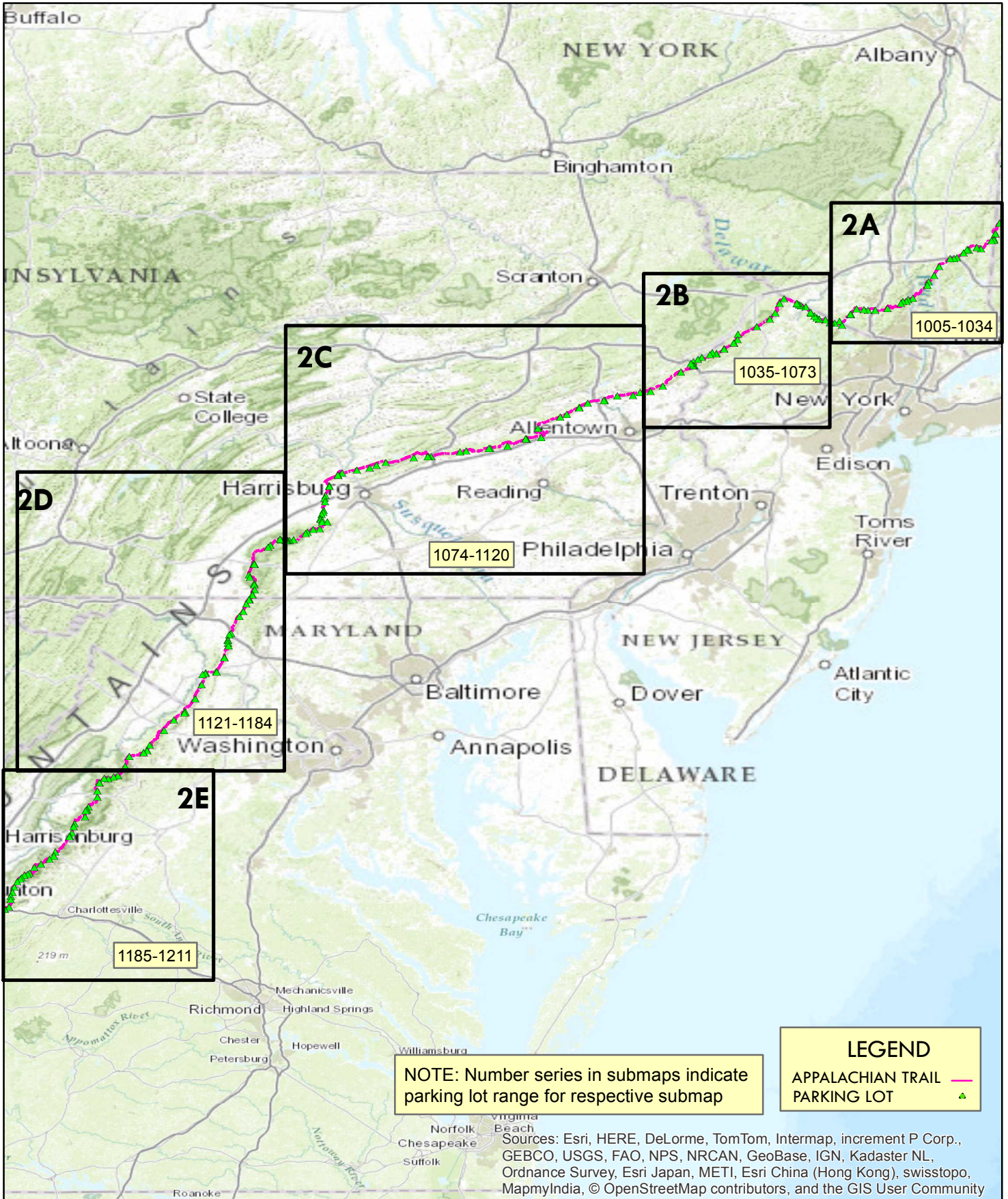
Sources: Esri, HERE, DeLorme, TomTom, Intermap, increment P Corp., GEBCO, USGS, FAO, NPS, NRCAN, GeoBase, IGN, Kadaster NL, Ordnance Survey, Esri Japan, METI, Esri China (Hong Kong), swisstopo, MapmyIndia, © OpenStreetMap contributors, and the GIS User Community



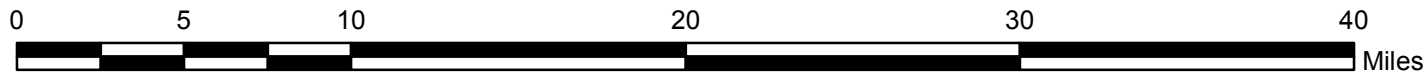
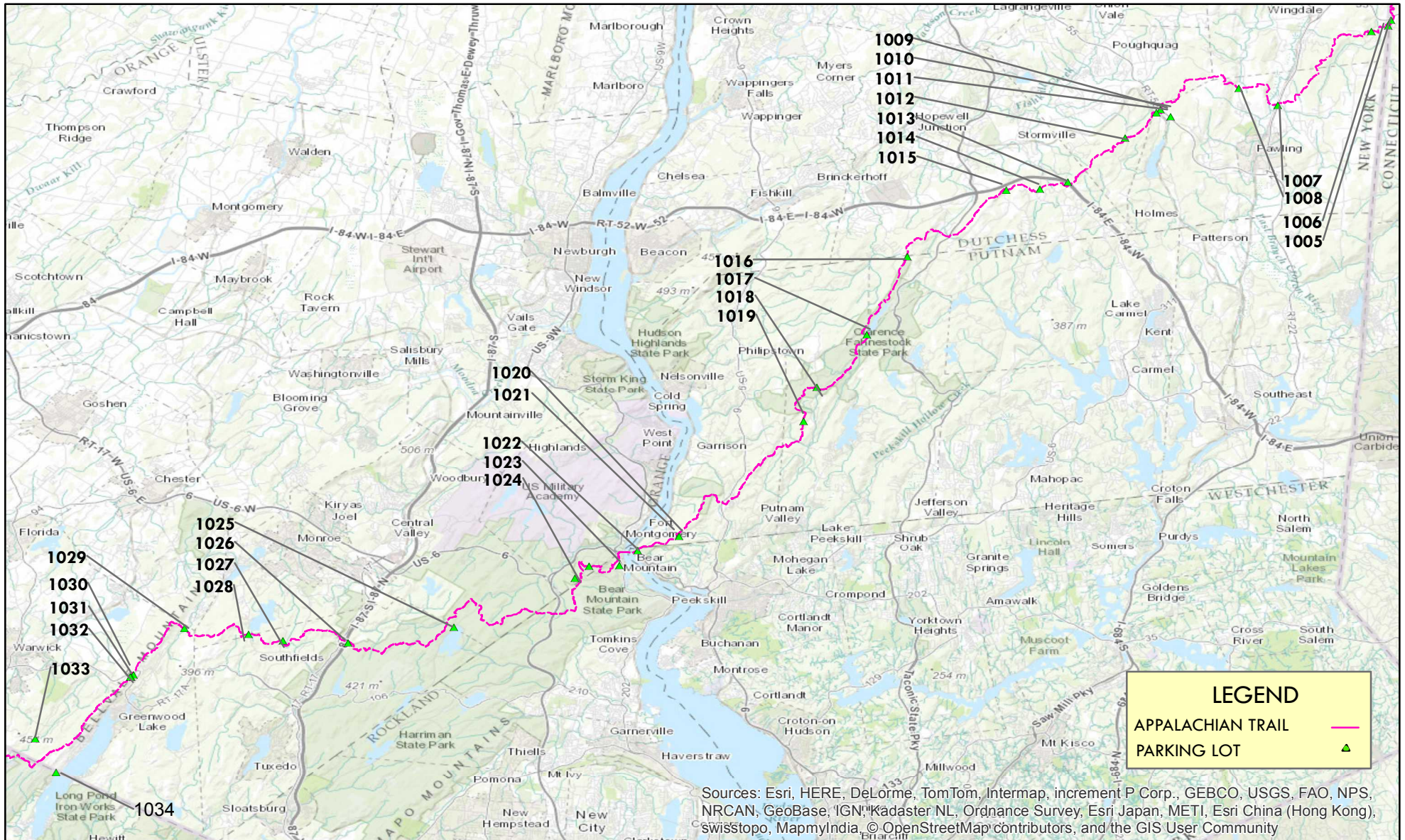
APPALACHIAN NATIONAL SCENIC TRAIL NEW ENGLAND REGION AREA - MAP 1D



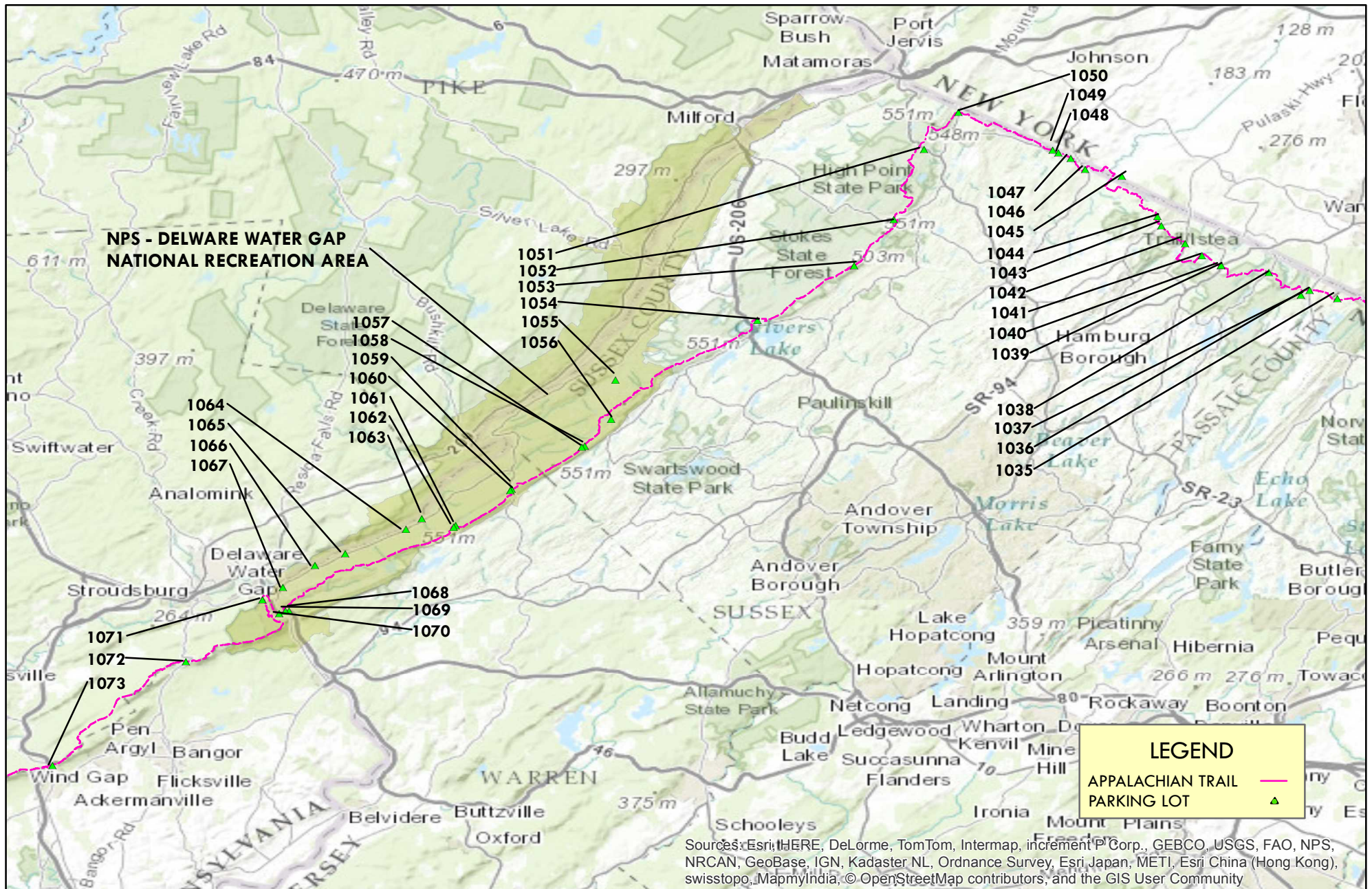
APPALACHIAN NATIONAL SCENIC TRAIL MID ATLANTIC REGION AREA - MAP 2



APPALACHIAN NATIONAL SCENIC TRAIL MID ATLANTIC REGION - MAP 2A



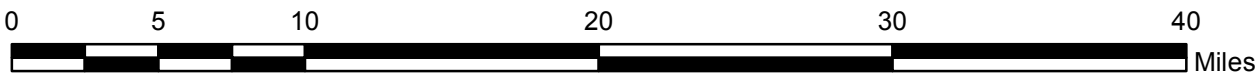
APPALACHIAN NATIONAL SCENIC TRAIL MID ATLANTIC REGION - MAP 2B



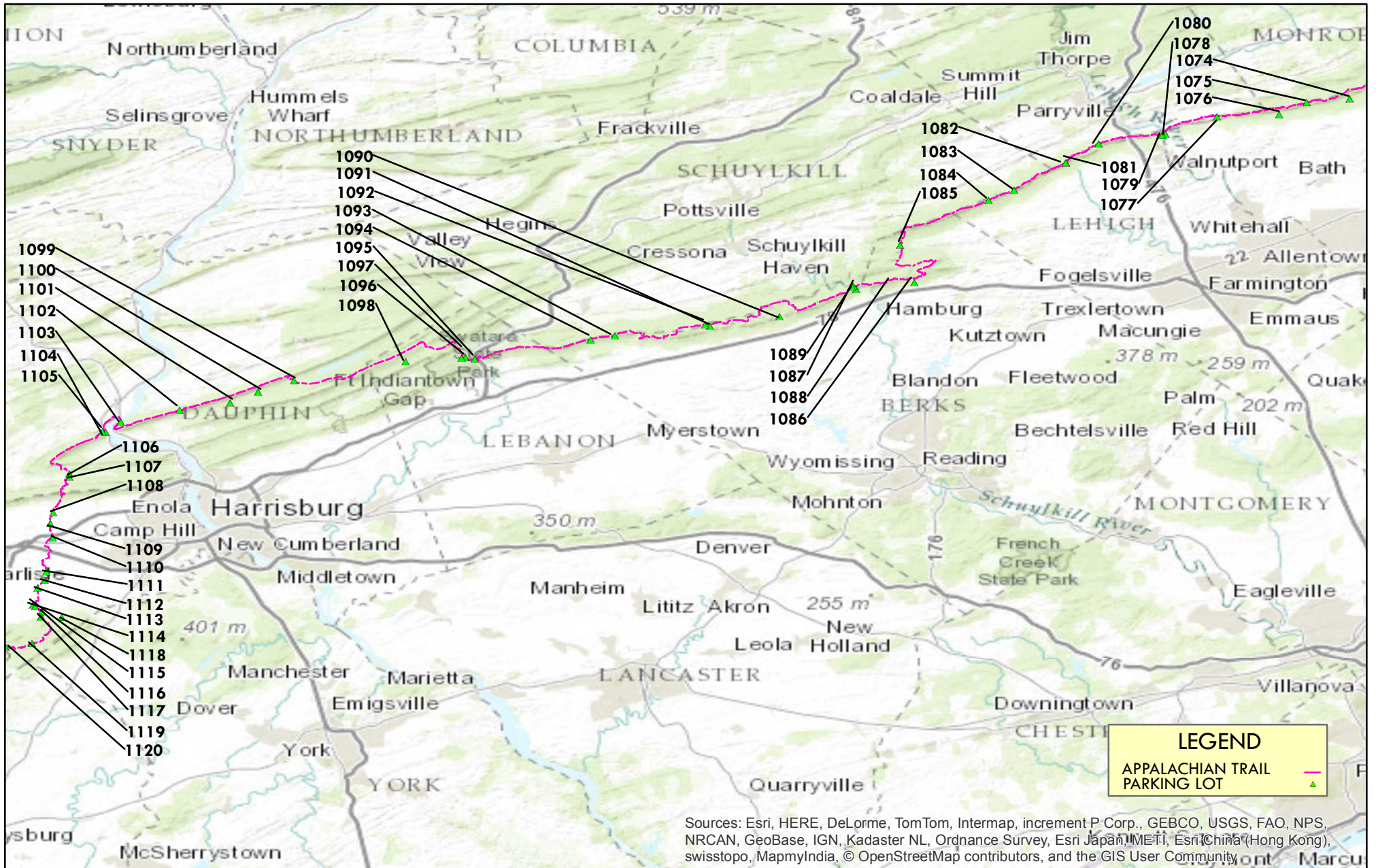
LEGEND

- APPALACHIAN TRAIL ———
- PARKING LOT ▲

Sources: Esri, HERE, DeLorme, TomTom, Intermap, increment P Corp., GEBCO, USGS, FAO, NPS, NRCAN, GeoBase, IGN, Kadaster NL, Ordnance Survey, Esri Japan, METI, Esri China (Hong Kong), swisstopo, MapmyIndia, © OpenStreetMap contributors, and the GIS User Community

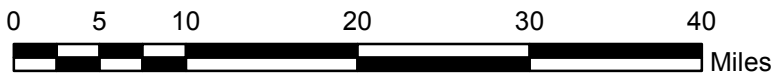
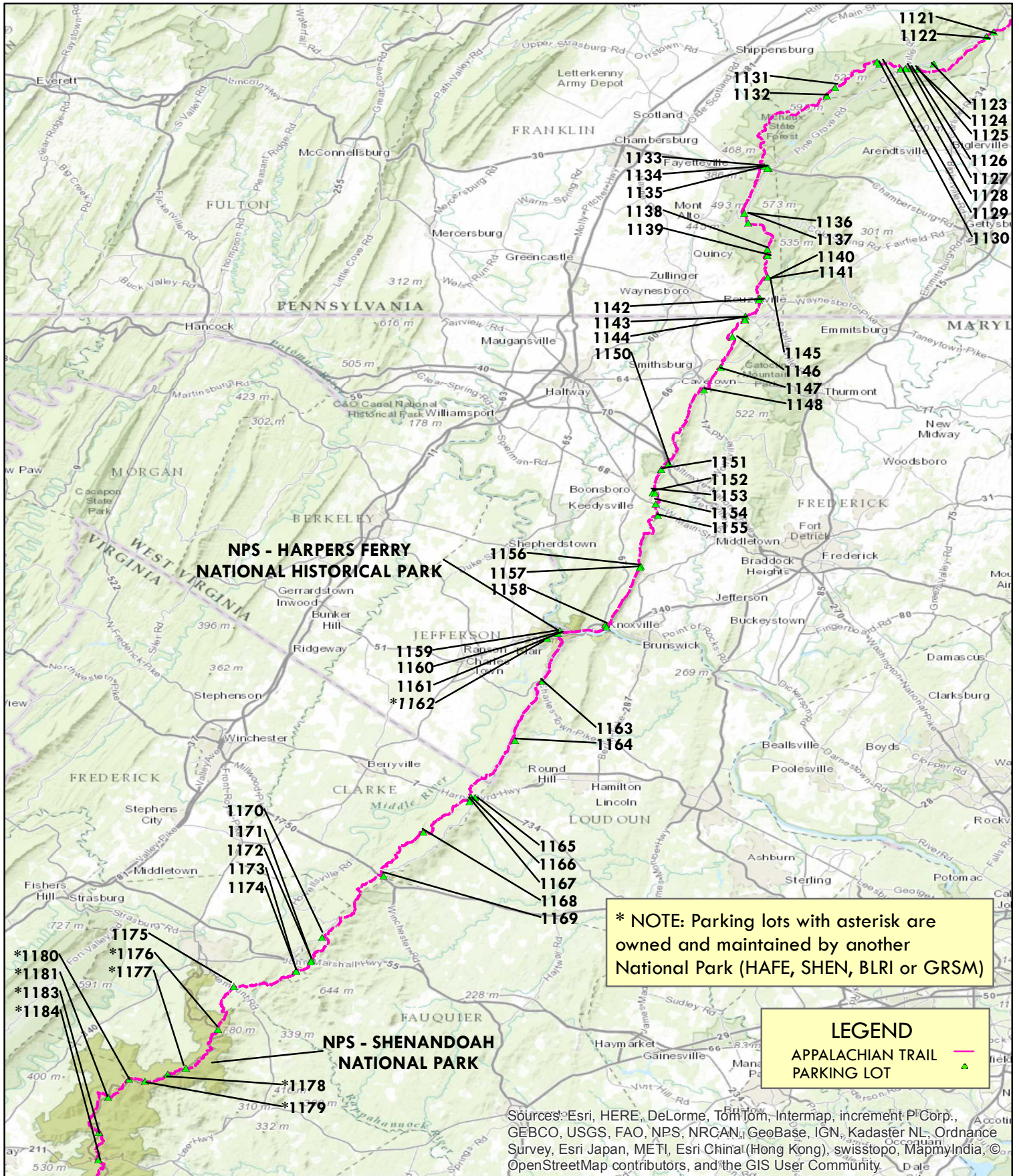


APPALACHIAN NATIONAL SCENIC TRAIL MID ATLANTIC REGION - MAP 2C

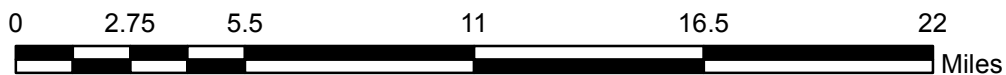
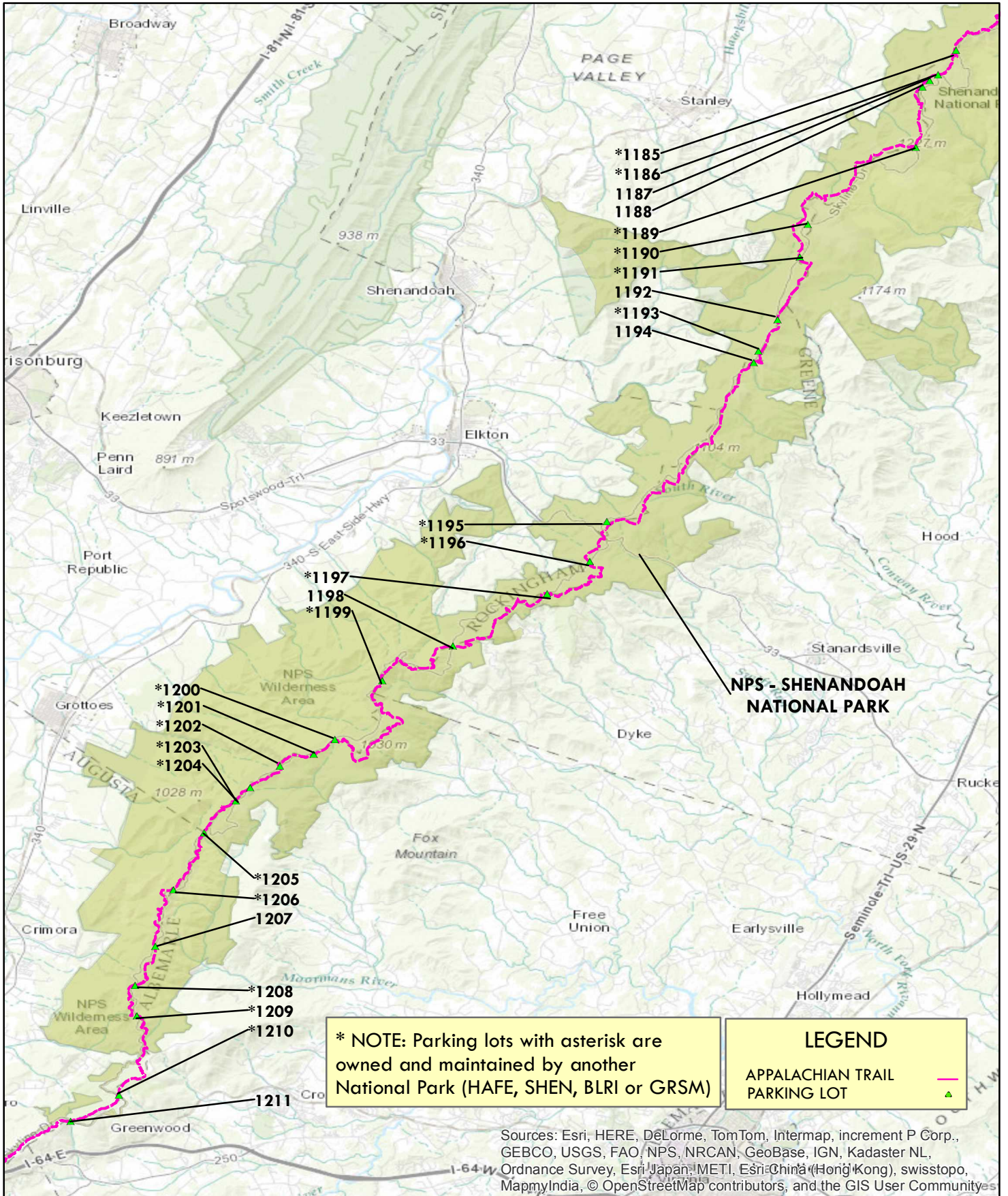


Sources: Esri, HERE, DeLorme, TomTom, Intermap, increment P Corp., GEBCO, USGS, FAO, NPS, NRCAN, GeoBase, IGN, Kadaster NL, Ordnance Survey, Esri Japan, METI, Esri China (Hong Kong), swisstopo, MapmyIndia, © OpenStreetMap contributors, and the GIS User Community

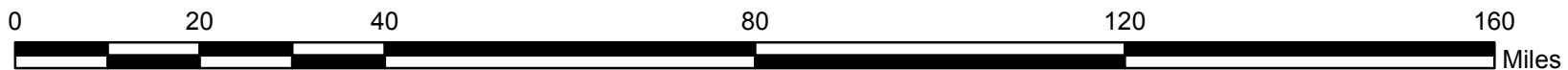
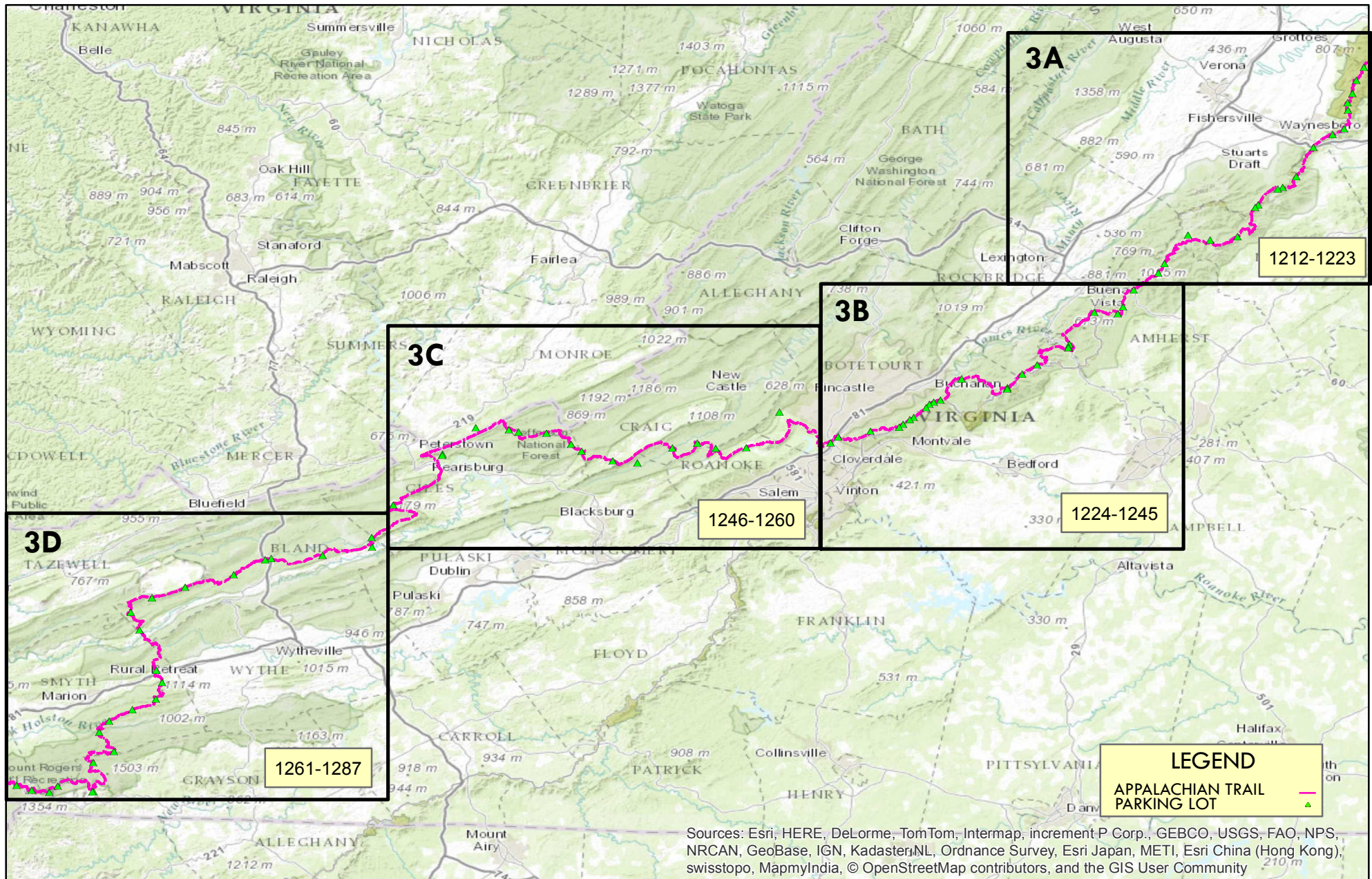
APPALACHIAN NATIONAL SCENIC TRAIL MID ATLANTIC REGION - MAP 2D



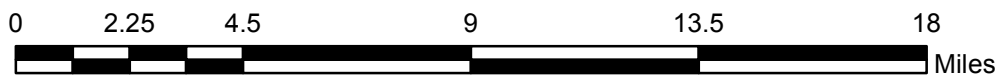
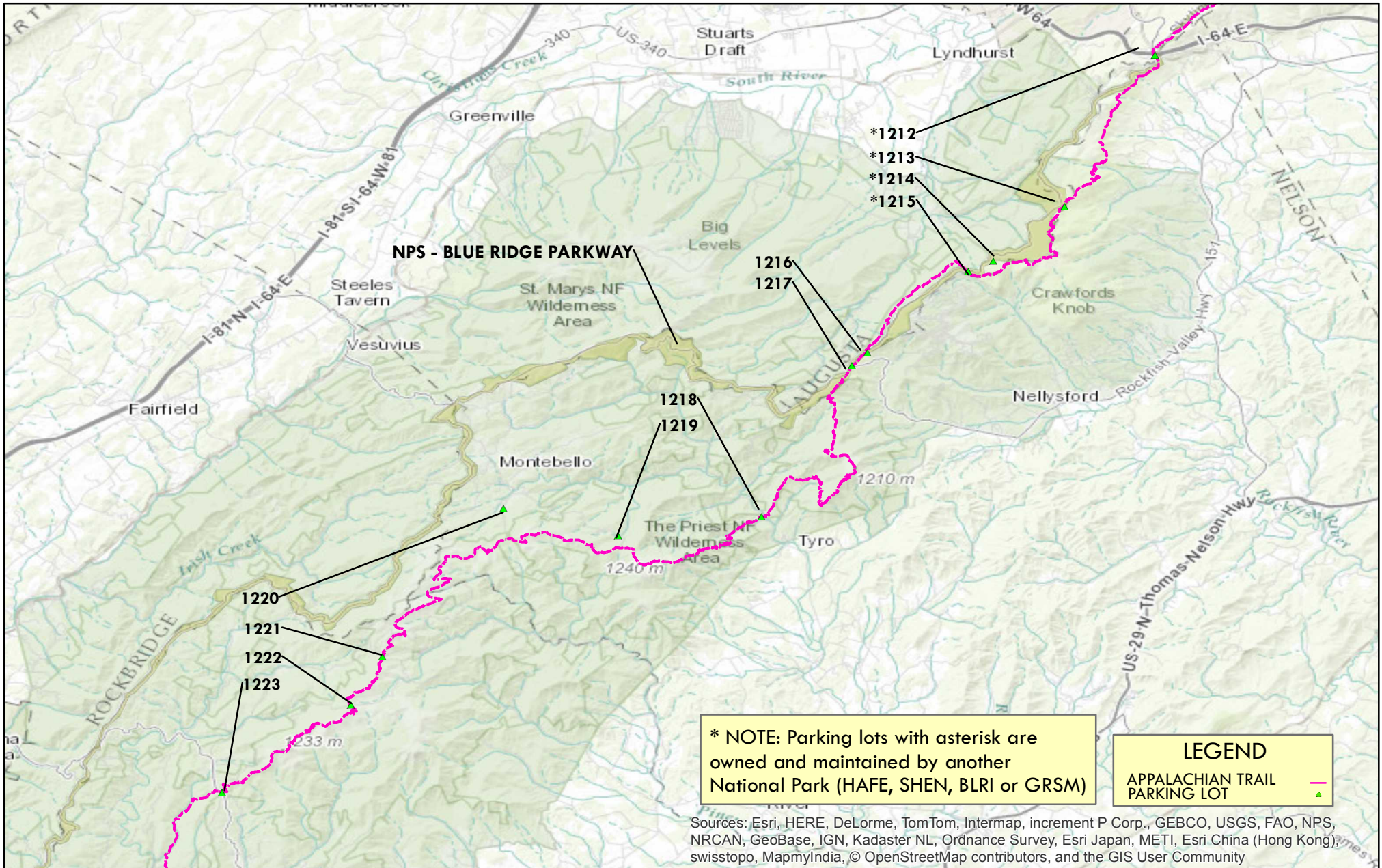
APPALACHIAN NATIONAL SCENIC TRAIL MID ATLANTIC REGION - MAP 2E



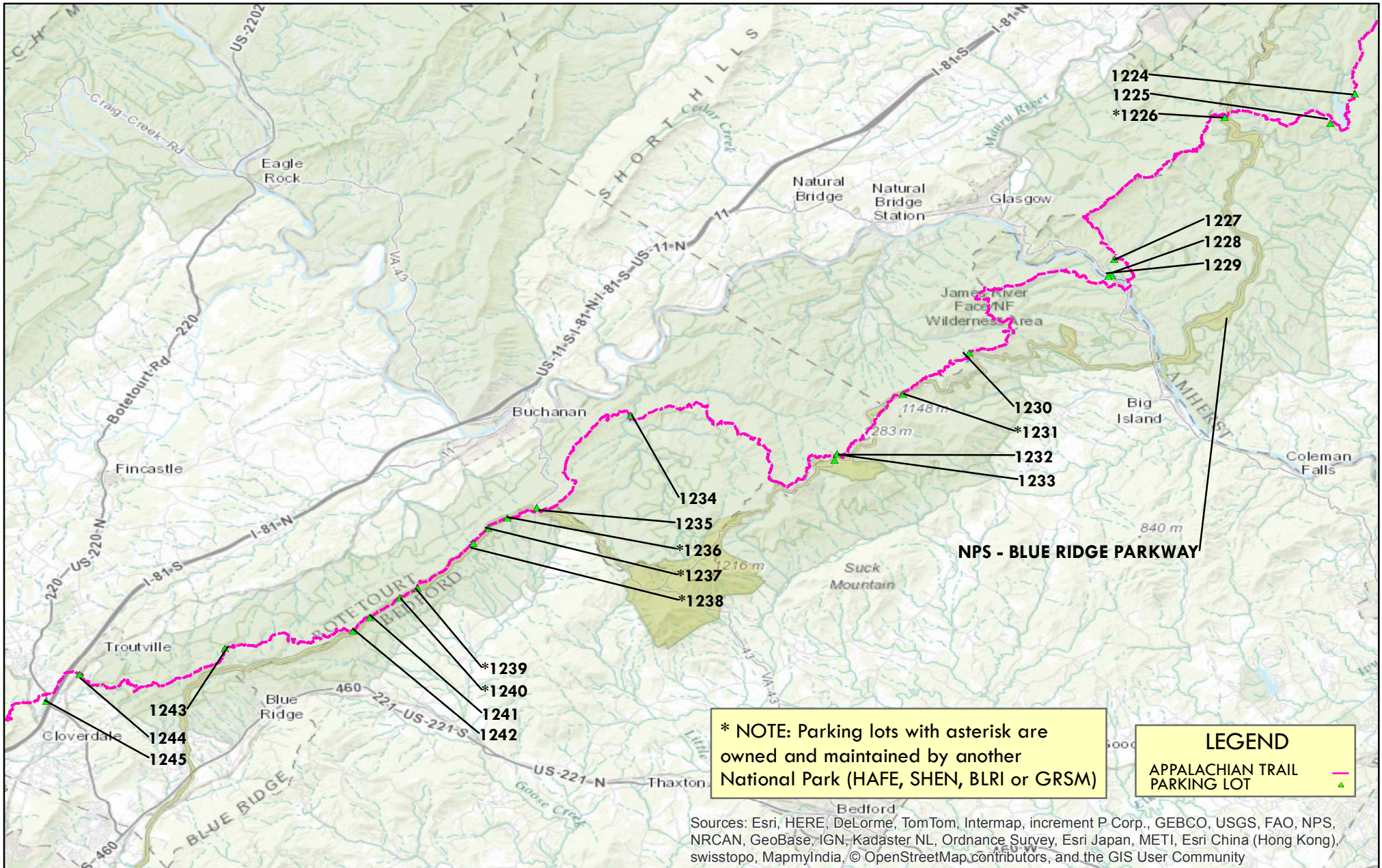
APPALACHIAN NATIONAL SCENIC TRAIL VIRGINIA AREA REGION AREA - MAP 3



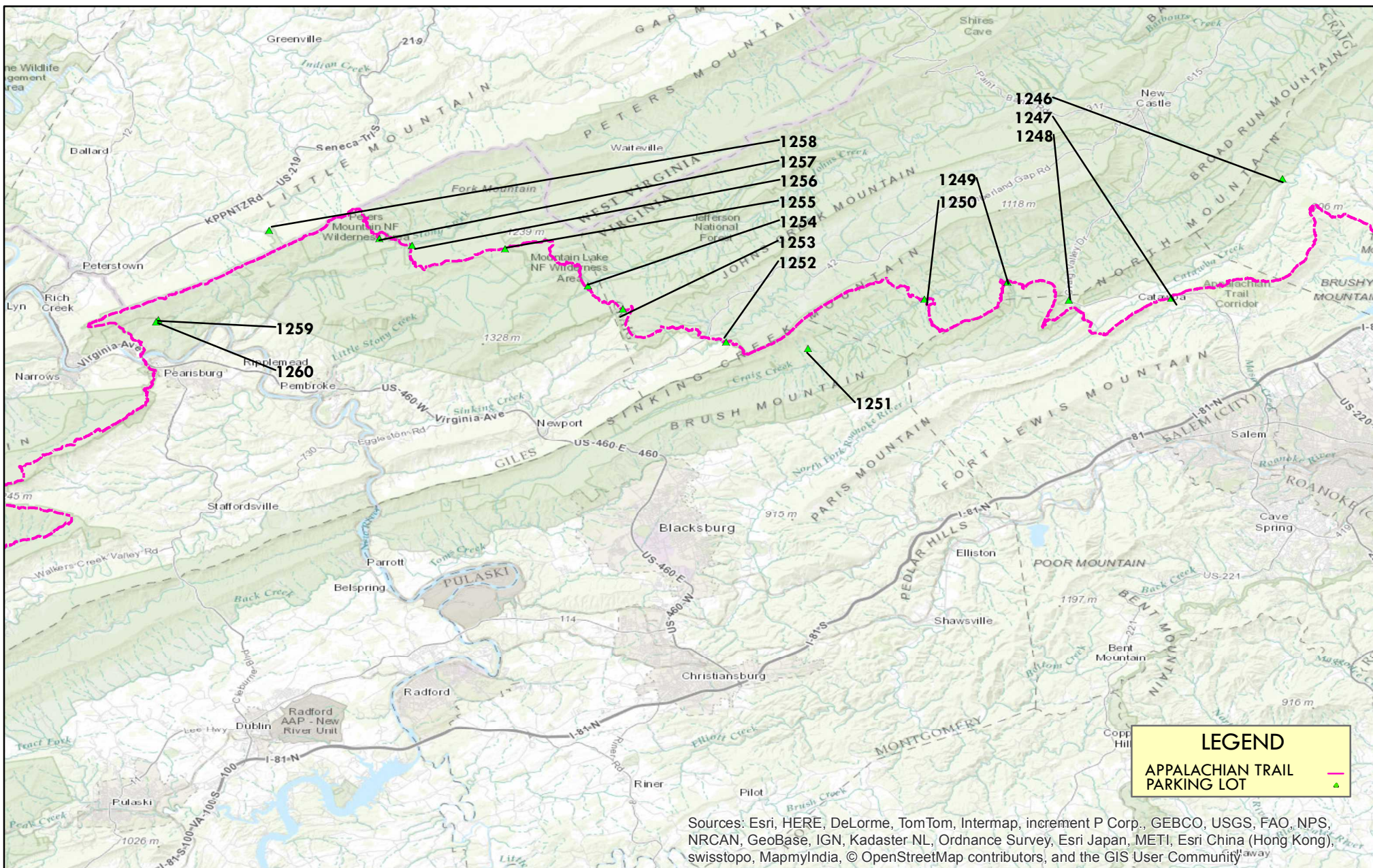
APPALACHIAN NATIONAL SCENIC TRAIL VIRGINIA REGION - MAP 3A



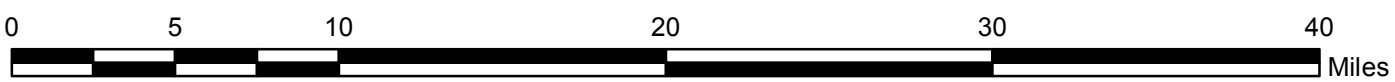
APPALACHIAN NATIONAL SCENIC TRAIL VIRGINIA REGION - MAP 3B



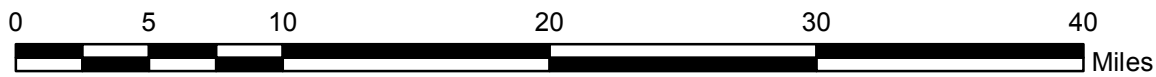
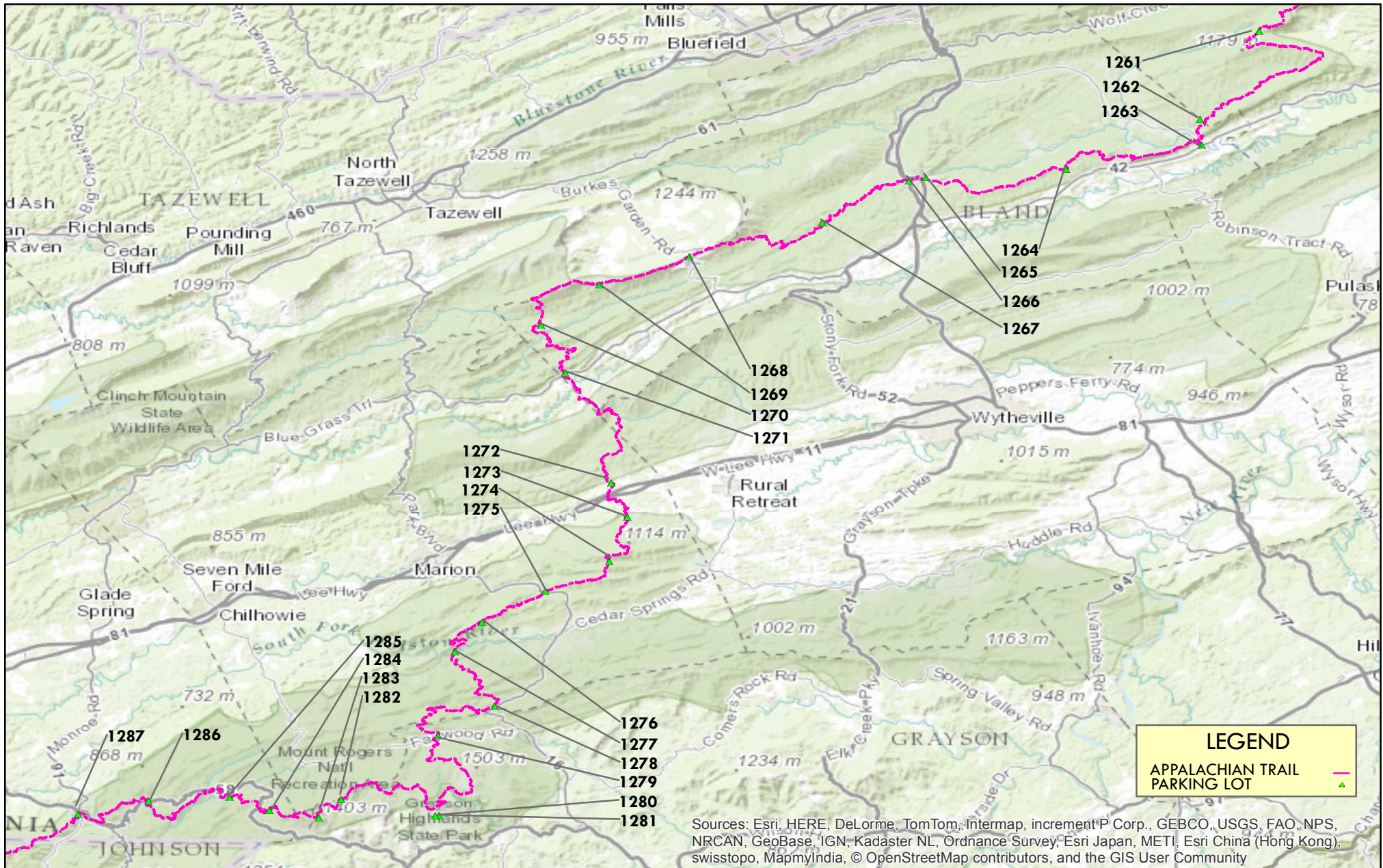
APPALACHIAN NATIONAL SCENIC TRAIL VIRGINIA REGION - MAP 3C



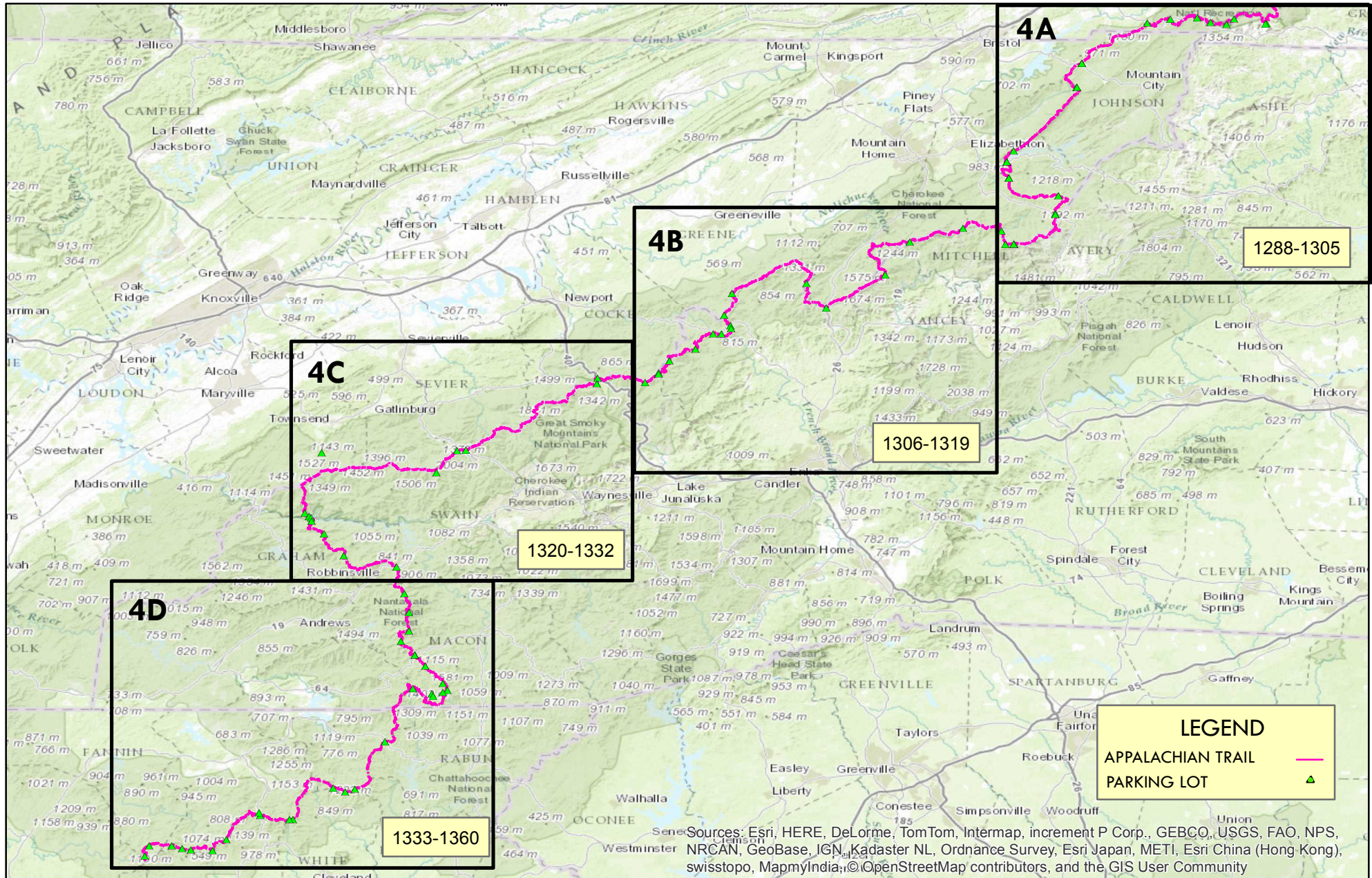
Sources: Esri, HERE, DeLorme, TomTom, Intermap, increment P Corp., GEBCO, USGS, FAO, NPS, NRCAN, GeoBase, IGN, Kadaster NL, Ordnance Survey, Esri Japan, METI, Esri China (Hong Kong), swisstopo, MapmyIndia, © OpenStreetMap contributors, and the GIS User Community



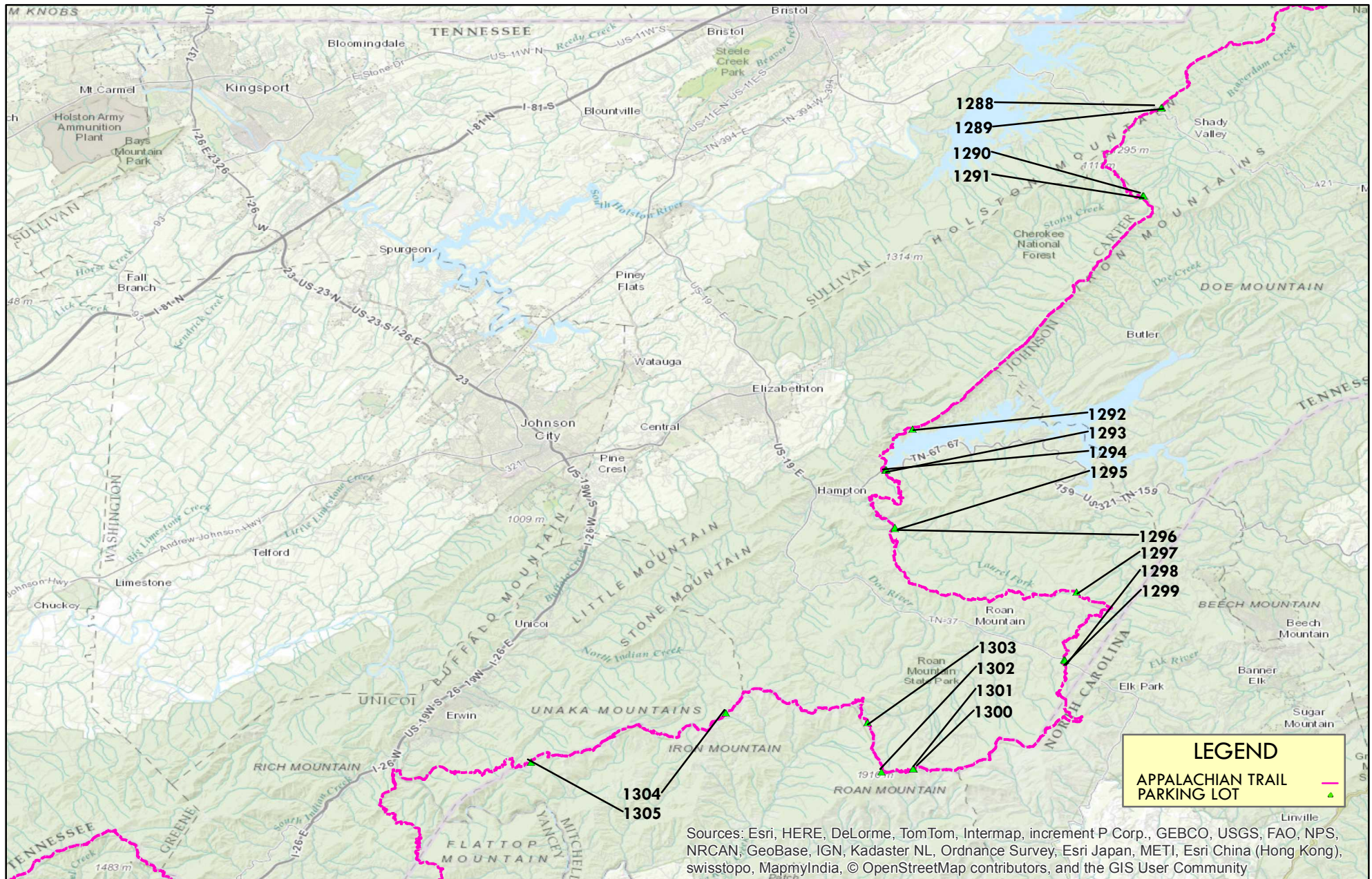
APPALACHIAN NATIONAL SCENIC TRAIL VIRGINIA REGION - MAP 3D



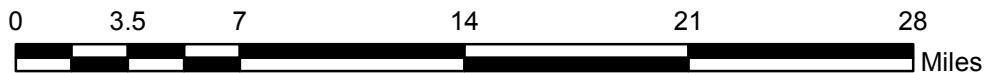
APPALACHIAN NATIONAL SCENIC TRAIL SOUTHERN REGIONAL AREA - MAP 4



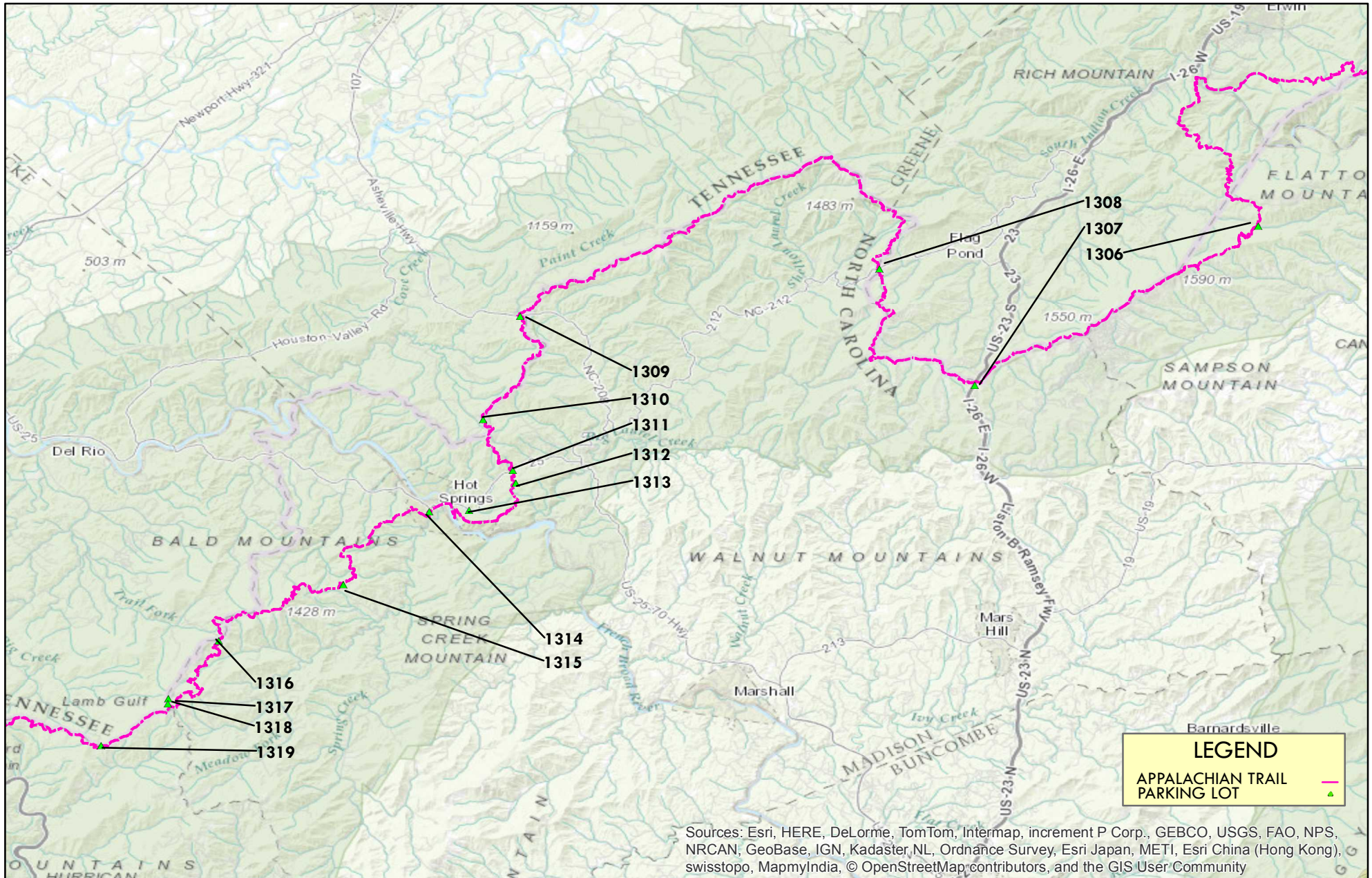
APPALACHIAN NATIONAL SCENIC TRAIL SOUTHERN REGIONAL - MAP 4A



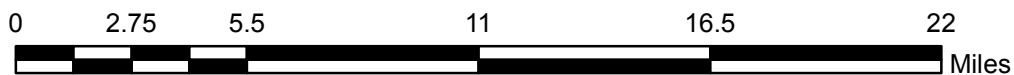
Sources: Esri, HERE, DeLorme, TomTom, Intermap, increment P Corp., GEBCO, USGS, FAO, NPS, NRCAN, GeoBase, IGN, Kadaster NL, Ordnance Survey, Esri Japan, METI, Esri China (Hong Kong), swisstopo, MapmyIndia, © OpenStreetMap contributors, and the GIS User Community



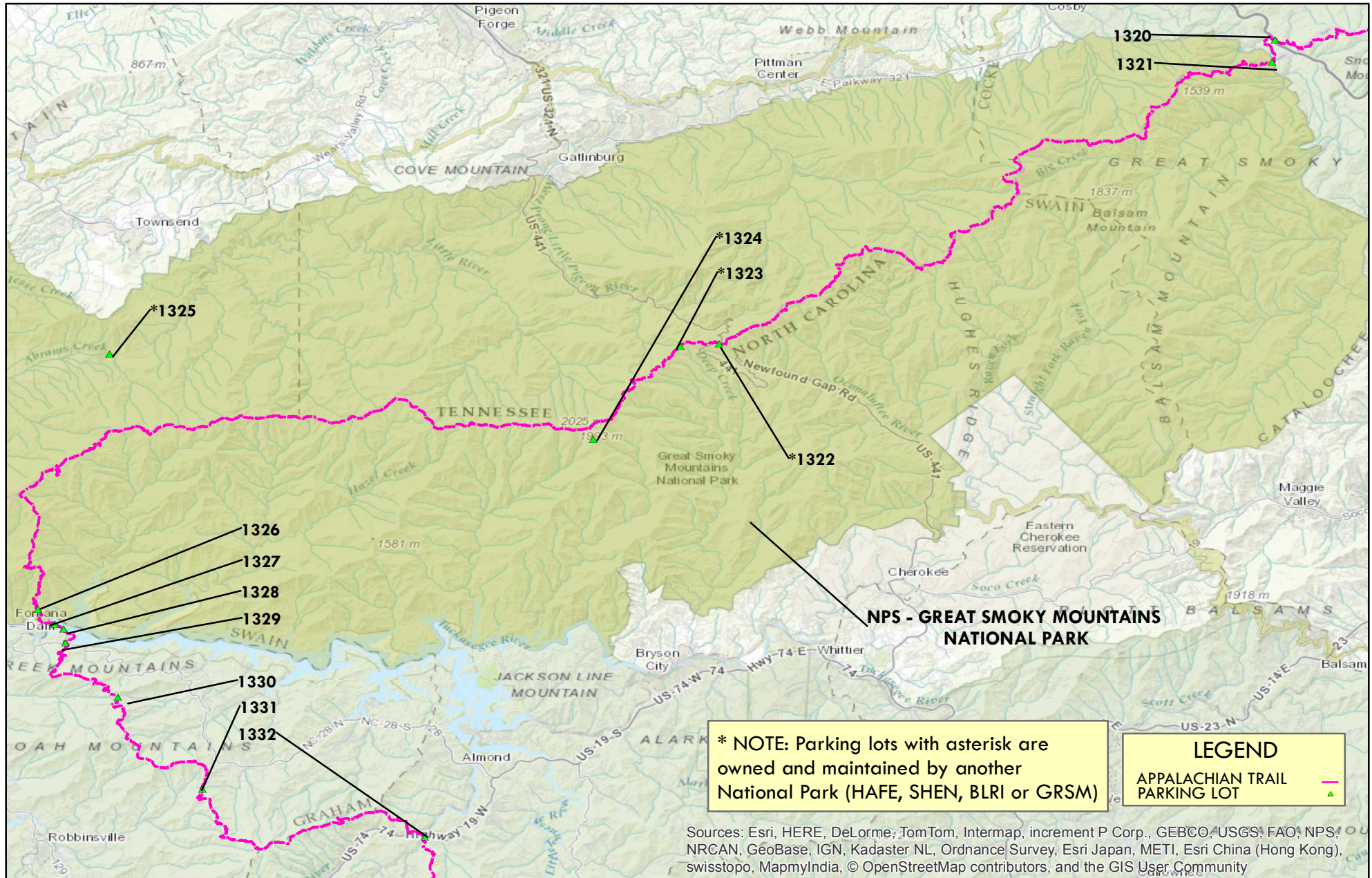
APPALACHIAN NATIONAL SCENIC TRAIL SOUTHERN REGIONAL - MAP 4B



Sources: Esri, HERE, DeLorme, TomTom, Intermap, increment P Corp., GEBCO, USGS, FAO, NPS, NRCAN, GeoBase, IGN, Kadaster, NL, Ordnance Survey, Esri Japan, METI, Esri China (Hong Kong), swisstopo, MapmyIndia, © OpenStreetMap contributors, and the GIS User Community



APPALACHIAN NATIONAL SCENIC TRAIL SOUTHERN REGIONAL - MAP 4C



APPALACHIAN NATIONAL SCENIC TRAIL SOUTHERN REGIONAL - MAP 4D

