



# Federal Lands Highway Road Inventory Program

Road Inventory and Condition Assessment

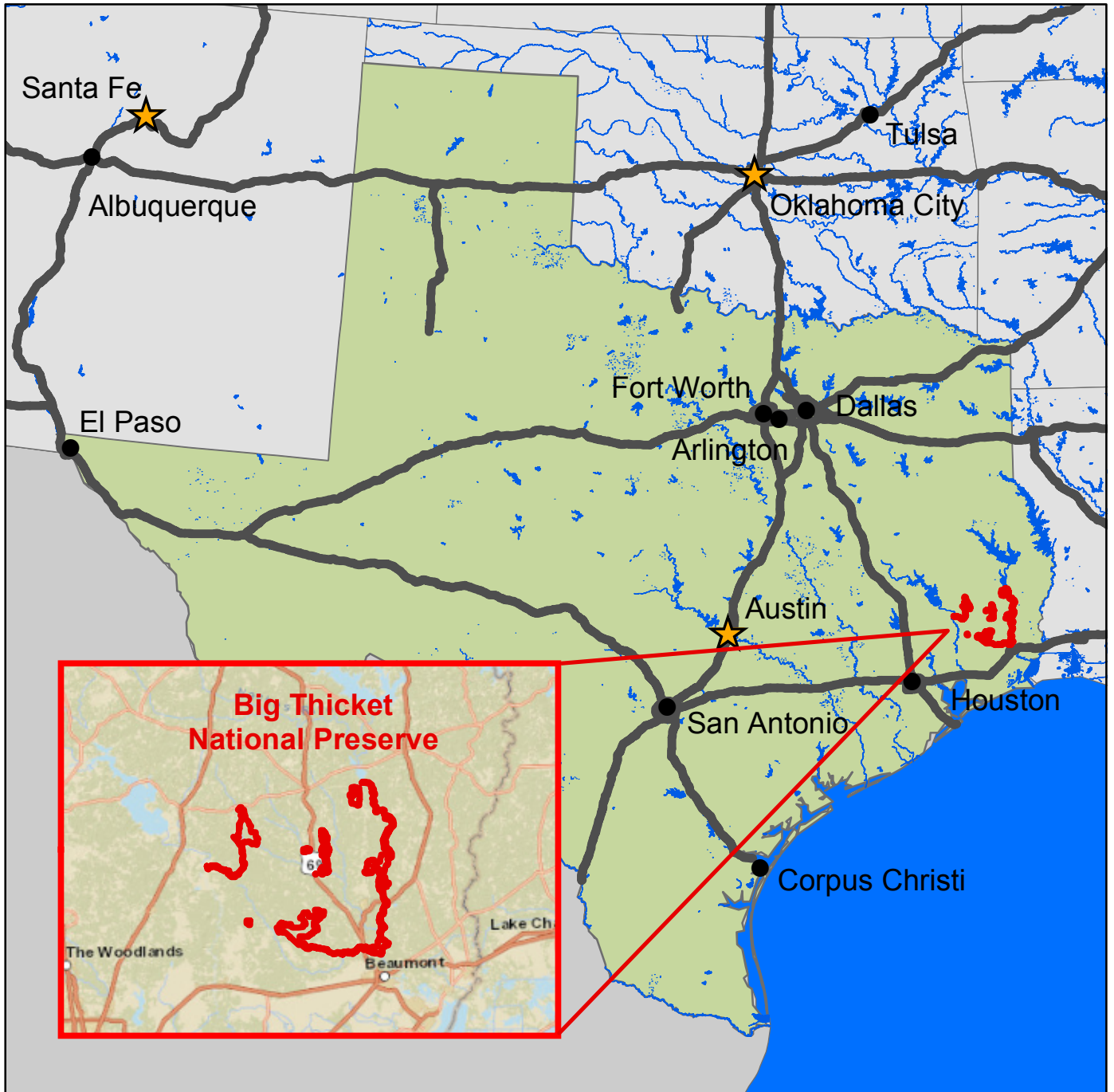


**Big Thicket National Preserve**  
**BITH - 7140**

**Cycle 5 Report**

**Prepared By: Federal Highway Administration**  
**Road Inventory Program (RIP)**  
**Data Collected: 01/2012**  
**Report Date: 09/2012**

# Big Thicket National Preserve in Texas





## TABLE OF CONTENTS

	<u>SECTION</u>	<u>PAGE</u>
1.	<b>INTRODUCTION</b>	<b>1 - 1</b>
2.	<b>PARK ROUTE INVENTORY</b> Route IDs, Subcomponents & Changes Report (As Applicable)	<b>2 - 1</b>
3.	<b>PARK SUMMARY INFORMATION</b>	<b>3 - 1</b>
4.	<b>PARK ROUTE LOCATION MAPS</b> Route Location Key Map Route Location Area Map	<b>4 - 1</b> <b>4 - 2</b>
5.	<b>PAVED ROUTE CONDITION RATING SHEETS</b>	<b>5 - 1</b>
6.	<b>MANUALLY RATED PAVED ROUTE CONDITION RATING SHEETS</b> MRR Pages	<b>6 - 1</b>
7.	<b>PARKING AREA CONDITION RATING SHEETS</b> Paved Parking Area Pages	<b>7 - 1</b>
8.	<b>PARKWIDE / ROUTE MAINTENANCE FEATURES SUMMARIES</b>	<b>8 - 1</b>
9.	<b>ROUTE MAINTENANCE FEATURES ROAD LOGS</b>	<b>9 - 1</b>
10.	<b>APPENDIX</b> Glossary of Terms and Abbreviations GPS on Manually Rated Routes Geodatabase Background and Metadata	<b>10 - 1</b> <b>10 - 2</b> <b>10 - 3</b>

# Section 1 Introduction



Big Thicket National Preserve



Federal Lands Highway  
Road Inventory Program

## INTRODUCTION

The Federal Highway Administration, (FHWA), in the mid 1970s, was charged with the task of identifying surface condition deficiencies and corrective priorities on National Park Service (NPS) roads and parkways. Additionally, FHWA was tasked with establishing an integrated maintenance features inventory, locating features such as culverts, guardrails, and signs, among others, along NPS roads and parkways. As a result, in 1976 the NPS and FHWA entered into an MOA (Memorandum Of Agreement) which established the RIP (Road Inventory Program). This MOA was terminated and revised in 1980 to establish a new MOA aiming to update RIP data and develop a long-range program to improve and maintain NPS roads to designated condition standards and establish a maintenance management program.

The FHWA completed this initial phase of the RIP in the early 1980s. As a result of this effort, each NPS site included in the study received a RIP Report known as the “Brown Book” which included the information collected during this first RIP phase.

In the 1990s, the effort was again renewed to update and maintain the RIP data. By this time the computer age was upon us and a process was employed that relied heavily on electronic data collection and computer technology. A cyclical program was developed and the RIP completed two cycles of data collection from 1994 to 2001. Cycle 1, starting in 1994, was conducted in 44 “large parks” (parks containing 10 or more paved route miles). Cycle 2 began in 1997 and comprised 79 large parks and 5 small parks totaling 4,874 paved route miles. Each of these parks received a RIP Report known as the “Blue Book”. Cycle 3, from 2001 to 2004, was conducted in all parks, large and small, that contained any paved routes, including parking areas and, again, each park received a RIP Report and associated electronic files.

Cycle 4 was initiated in the spring of 2006 covering 86 large parks and several associated small parks consisting of 5,553 paved route miles and 6,232 paved parking areas. Data collection has been completed for Cycle 4 and all data has been delivered to the NPS.

In 2005, the FHWA began implementing the use of a Pavement Management System (PMS) to assist the NPS in prioritizing Pavement Maintenance and Rehabilitation activities. The PMS used by FHWA is the Highway Pavement Management Application (HPMA) and this software has the ability to store inventory and condition data from RIP and forecast future performance using prediction models. Outputs include performance and condition reports at the National, Regional, Park, or Route level. A regional prioritized list and optimization have been produced for most regions and the Federal Highway Deferred Maintenance is calculated via the HPMA.

In an effort to improve the accuracy of treatment recommendations and pavement condition descriptions, an extensive study was completed throughout 2010 that has resulted in changes to the RIP condition reporting method, specifically the distresses and indexes that comprise the Pavement Condition Rating (PCR). It was determined that a better representation of PCR could

be achieved by modifying the relative impact certain distresses would have on the overall rating. The changes that were implemented were endorsed by management at both the FHWA and NPS in October 2010. These changes will allow greater use of RIP and HPMA data for not simply condition data reporting, but also as a reliable tool for project identification and selection. Because of these changes, the PCR Condition ratings reported in Cycle 5 do not directly relate to the condition ratings reported in previous cycle RIP Reports. For more detailed information about the changes, see Section 3 and Section 10 in this RIP Report.

Cycle 5 has launched in the summer of 2010 and will again comprise all parks, large and small, that are served by paved roads and/or parking areas. For Cycle 5, the decision was made to collect condition data in large parks on Functional Class 1, 2, and 7 paved routes only, as well as any new routes that were previously not collected. In small parks, all paved routes and parking areas will be collected. As a result, this will include 81 large parks with 4,459 paved route miles and 168 small parks with 529 paved route miles and associated paved parking areas.

Since 1984, the Road Inventory Program has been funded through the Federal Lands Highway Park Roads and Parkways (PRP) Program. Currently, coordination of the RIP with FLH is under the NPS Washington Headquarters Park Facility Management Division. The FLH Washington office coordinates policy and prepares national reports and needs assessment studies for Congress.

In 1998, the Transportation Equity Act for the 21<sup>st</sup> Century (TEA-21) amended Title 23 U.S.C., and inserted Section 204(a)(6) requiring the FHWA and NPS, to develop by rule, a Pavement Management System (PMS) applied to park roads and parkways serving the National Park System.

FLH is responsible for the accuracy of all data presented in this report. Any questions or comments concerning the contents of this report should be directed to the national RIP Coordinator located in Sterling, Virginia.

Respectfully,

FHWA RIP Team

FHWA/Eastern Federal Lands  
21400 Ridgetop Circle  
Sterling, VA 20166  
(703) 404-6371

FHWA/Central Federal Lands  
12300 West Dakota Ave  
Lakewood, CO 80228  
(720) 963-3560

# Section 2 Park Route Inventory



Big Thicket National Preserve



Federal Lands Highway  
Road Inventory Program

# Cycle 5 NPS/RIP Route ID Report

Road Inventory Program 09/21/2012

(Numerical By Route #)

Page 1 of 5

Shading Color Key:

White = Paved Routes, DCV Driven

Yellow = Unpaved Routes, DCV not Driven

Blue = All Paved Parking Areas

Green = All Unpaved Parking Areas

Red text denotes approx. mileage

Grey = Paved Routes, DCV not Driven

Black = State, Local or Private non-NPS Routes

■ = Concession Route Flag ON

\*Unpaved route data was obtained from NPS and was not inventoried by the Road Inventory Program (RIP).

\*\* DCV - Data Collection Vehicle NC - Not Collected

## BITH

### BIG THICKET NATIONAL PRESERVE

Rte. No.	Cycle Collected	FMSS No.	Concess Route	Route Name	Route Description From To	Maint. District	Paved Miles	Un-Paved Miles	Total Route Length	Func. Class	Manual Rated SQ/FT	Surf. Type	Area Maps
0140	NC	28082		LILLY HOUSE DRIVE	FROM ROUTE 5000 (FM 1276) TO SUNFLOWER ROAD	N/A	0.00	0.07	0.07	2		GR	
0170	NC	28074		FIELD RESEARCH STATION	FROM STATE HIGHWAY 770 TO ROUTE 0907 (FIELD RESEARCH STATION PARKING)	N/A	0.00	0.08	0.08	3		GR	
0171	NC	72931		ARD LAKE/POTATO PATCH ROAD	FROM ROUTE 0172 (TIMBER SLOUGH ROAD) TO END	N/A	0.00	0.10	0.10	2		GR	
0172	NC	72921		TIMBER SLOUGH ROAD	FROM GORDON ROAD TO ROUTE 0921 (TIMBER SLOUGH PARKING)	N/A	0.00	6.15	6.15	2		GR	
0173	NC	71815		BIRDWATCHERS ROAD	FROM OAK HILL DRIVE TO ROUTE 0917 (BIRDWATCHERS PARKING)	N/A	0.00	0.20	0.20	2		NV	
0200	NC	72938		ZIG ZAG ROAD	FROM FM 2937 TO END	N/A	0.00	1.60	1.60	4		GR	
0402	NC	28103		COTTON ROAD	FROM ROSIER PARK ROAD TO END	N/A	0.00	3.10	3.10	5		GR	
0403	NC	28104		TEEL ROAD	FROM TEEL ROAD TO END	N/A	0.00	0.80	0.80	5		GR	
0410	NC	71820		BIG SANDY TOWER ROAD	FROM FM 943 TO SEGNO FIRE TOWER ROAD	N/A	0.00	0.40	0.40	5		GR	
0420	NC	27496		RANCH HOUSE ROAD	FROM TRIPLE D RANCH ROAD TO RANCH HOUSE	N/A	0.00	1.60	1.60	5		GR	
0451	NC	28237		HEADQUARTERS COMPLEX ROAD	FROM ROUTE 5004 (FM 420) TO ROUTE 0902 (HEADQUARTERS AREA EMPLOYEE PARKING)	N/A	0.00	0.20	0.20	5		GR	
0452	NC	235327		SEAL HOUSE ROAD	FROM KAWANI'S CLUB ROAD TO MILLS RV ROAD	N/A	0.00	1.00	1.00	5		GR	
0453	NC	235450		GARDNER CEMETERY ROAD	FROM COUNTY ROAD 4800 TO PARKING	N/A	0.00	0.15	0.15	6		GR	
<b>0900</b>	<b>5</b>	<b>28281</b>		<b>VISITOR CENTER</b>	<b>FROM ROUTE 5004 (FM 420) TO PARKING</b>	<b>N/A</b>	<b>0.00</b>	<b>0.00</b>	<b>0.00</b>		<b>34,589</b>	<b>CO</b>	<b>1,1A</b>
0902	NC	28239		HEADQUARTERS AREA EMPLOYEE PARKING	FROM ROUTE 5004 (FM 420) TO HEADQUARTERS AREA	N/A	0.00	0.00	0.00		3,750	GR	
<b>0904</b>	<b>5</b>	<b>28618</b>		<b>KIRBY NATURE TRAIL PARKING</b>	<b>FROM ROUTE 5004 (FM 420) TO ROUTE 5004 (FM 420)</b>	<b>N/A</b>	<b>0.00</b>	<b>0.00</b>	<b>0.00</b>		<b>13,751</b>	<b>AS</b>	<b>1,1A</b>
0905	NC	28115		SUNDEW PARKING	FROM COUNTY ROAD 1910 TO PARKING	N/A	0.00	0.00	0.00		8,000	GR	
0906	NC	28440		LAKEVIEW PARKING	FROM ROUTE 5005 (LAKEVIEW ROAD) TO PARKING	N/A	0.00	0.00	0.00		23,000	GR	
0907	NC	28607		FIELD RESEARCH STATION PARKING	FROM ROUTE 0170 (FIELD RESEARCH STATION) TO PARKING	N/A	0.00	0.00	0.00		4,000	GR	



# Cycle 5 NPS/RIP Route ID Report

Road Inventory Program 09/21/2012

(Numerical By Route #)

Page 2 of 5

Shading Color Key:

White = Paved Routes, DCV Driven

Yellow = Unpaved Routes, DCV not Driven

Blue = All Paved Parking Areas

Green = All Unpaved Parking Areas

Red text denotes approx. mileage

Grey = Paved Routes, DCV not Driven

Black = State, Local or Private non-NPS Routes

■ = Concession Route Flag ON

\*Unpaved route data was obtained from NPS and was not inventoried by the Road Inventory Program (RIP).

\*\* DCV - Data Collection Vehicle NC - Not Collected

## BITH

### BIG THICKET NATIONAL PRESERVE

Rte. No.	Cycle Collected	FMSS No.	Concess Route	Route Name	Route Description From To	Maint. District	Paved Miles	Un-Paved Miles	Total Route Length	Func. Class	Manual Rated SQ/FT	Surf. Type	Area Maps
0908	NC	28616		NORTH TURKEY PARKING	FROM ROUTE 5002 (FM 1943) TO PARKING	N/A	0.00	0.00	0.00		2,040	GR	
0909	NC	28617		SOUTH TURKEY TRAIL CREEK PARKING	FROM ROUTE 5003 (GORE STORE ROAD) TO PARKING	N/A	0.00	0.00	0.00		6,300	GR	
0910	NC	28619		SOUTH EXTENTION TURKEY CREEK PARKING	FROM ROUTE 5003 (GORE STORE ROAD) TO PARKING	N/A	0.00	0.00	0.00		4,200	GR	
0911	NC	28620		BIG SANDY TRAIL PARKING	FROM SUNFLOWER ROAD TO PARKING	N/A	0.00	0.00	0.00		12,000	GR	
0912	NC	28621		BEECH WOODS TRAIL PARKING	FROM ROUTE 5001 (FM 2992) TO PARKING	N/A	0.00	0.00	0.00		15,000	GR	
0913	NC	28622		EDGEWATER PARKING	FROM EDGEWATER DRIVE TO PARKING	N/A	0.00	0.00	0.00		8,050	GR	
0914	NC	28623		CONFLUENCE PARKING	FROM FOUR OAKS RANCH ROAD (UNPAVED PORTION) TO PARKING	N/A	0.00	0.00	0.00		16,900	GR	
0915	NC	28624		FOUR OAKS PARKING	FROM ROUTE 5006 (FOUR OAKS RANCH ROAD) TO PARKING	N/A	0.00	0.00	0.00		8,000	GR	
0916	NC	28625		HIGHWAY 96 BRIDGE PARKING	FROM U.S. HIGHWAY 96 TO PARKING	N/A	0.00	0.00	0.00		16,000	GR	
0917	NC	28626		BIRDWATCHERS PARKING	FROM ROUTE 0173 (BIRDWATCHERS ROAD) TO PARKING	N/A	0.00	0.00	0.00		5,600	GR	
0918	NC	28627		MCQUEENS LANDING PARKING	FROM COUNTY ROAD TO PARKING	N/A	0.00	0.00	0.00		5,000	GR	
0919	NC	28628		POTATO PATCH PARKING	FROM ROUTE 0172 (TIMBER SLOUGH ROAD) TO PARKING	N/A	0.00	0.00	0.00		1,600	GR	
0920	NC	28629		SAND LOT PARKING	FROM ROUTE 0172 (TIMBER SLOUGH ROAD) TO PARKING	N/A	0.00	0.00	0.00		16,000	GR	
0921	NC	28630		TIMBER SLOUGH PARKING	FROM ROUTE 0172 (TIMBER SLOUGH ROAD) TO PARKING	N/A	0.00	0.00	0.00		1,200	GR	
0922	NC	29558		PITCHER PLANT PARKING	FROM FM 4850 TO PARKING	N/A	0.00	0.00	0.00		600	GR	
0923	NC	29566		WOODLANDS PARKING	FROM ROUTE 5000 (FM 1276) TO PARKING	N/A	0.00	0.00	0.00		8,800	GR	
0924	NC	53191		FRANKLIN LAKE PARKING	FROM FRANKLIN LAKE ROAD TO PARKING	N/A	0.00	0.00	0.00		16,000	GR	
0925	NC	79498		HOLLY GROVE PARKING	FROM HOLLY GROVE CHURCH ROAD TO PARKING	N/A	0.00	0.00	0.00		2,400	GR	
<b>5000</b>	<b>5</b>			<b>FM 1276</b>	<b>FROM CAMP RUBY ROAD TO SUNFLOWER ROAD</b>	<b>N/A</b>	<b>7.10</b>	<b>0.00</b>	<b>7.10</b>			<b>AS</b>	<b>1</b>

# Cycle 5 NPS/RIP Route ID Report

Shading Color Key:

White = Paved Routes, DCV Driven

Yellow = Unpaved Routes, DCV not Driven

Blue = All Paved Parking Areas

Green = All Unpaved Parking Areas

Red text denotes approx. mileage

Grey = Paved Routes, DCV not Driven

Black = State, Local or Private non-NPS Routes

■ = Concession Route Flag ON

\*Unpaved route data was obtained from NPS and was not inventoried by the Road Inventory Program (RIP).

\*\* DCV - Data Collection Vehicle      NC - Not Collected

## BITH

### BIG THICKET NATIONAL PRESERVE

Rte. No.	Cycle Collected	FMSS No.	Concess Route	Route Name		Route Description	From	To	Maint. District	Paved Miles	Un-Paved Miles	Total Route Length	Func. Class	Manual Rated SQ/FT	Surf. Type	Area Maps
5001	5			FM 2992		FROM FM 1746		TO COUNTY ROAD 4375 (MOSS BRIDGE ROAD)	N/A	6.21	0.00	6.21			AS	1
5002	5			FM 1943		FROM COUNTY ROAD 4800		TO COUNTY ROAD 4850	N/A	1.81	0.00	1.81			AS	1
5003	5			GORE STORE ROAD		FROM HICKSBAUGH ROAD		TO HOFFMAN LOOP	N/A	1.19	0.00	1.19			AS	1
5004	5			FM 420		FROM U.S. HIGHWAY 69		TO MCNEELY ROAD	N/A	3.82	0.00	3.82			AS	1
5005	5			LAKEVIEW ROAD		FROM FM 1131		TO ROUTE 0906 (LAKEVIEW PARKING)	N/A	2.21	0.00	2.21			AS	1
5006	5			FOUR OAKS RANCH ROAD		FROM FM 1131		TO LOVING DRIVE	N/A	2.85	0.00	2.85			AS	1
5007	5			COOKS LAKE ROAD		FROM U.S. HIGHWAY 69		TO COOKS LAKE DAY USE AREA	N/A	0.60	0.00	0.60			AS	1

# Cycle 5 NPS/RIP Route ID Report

Shading Color Key:  
Red text denotes approx. mileage

White = Paved Routes, DCV Driven
Grey = Paved Routes, DCV not Driven

Yellow = Unpaved Routes, DCV not Driven
Black = State, Local or Private non-NPS Routes

Blue = All Paved Parking Areas
■ = Concession Route Flag ON

Green = All Unpaved Parking Areas
-----------------------------------

\*Unpaved route data was obtained from NPS and was not inventoried by the Road Inventory Program (RIP).

\*\* DCV - Data Collection Vehicle      NC - Not Collected

## CYCLE 5 SUMMARY TOTALS FOR BIG THICKET NATIONAL PRESERVE

<b>CYCLE 5 ROUTE TOTALS</b>	
DCV Driven Route Miles	0.00
Manually Rated Route Miles	0.00
<b>TOTAL PARK ROUTE MILES COLLECTED IN CYCLE 5</b>	<b>0.00</b>
Manually Rated Routes (SQFT)	0
<b>TOTAL UNPAVED PARK ROUTE MILES</b>	<b>15.45</b>

<b>CYCLE 5 CONCESSION TOTALS</b>	
Concession Paved Route Miles	0.00
Concession Unpaved Route Miles	0.00
<b>TOTAL CONCESSION ROUTE MILES</b>	<b>0.00</b>
Concession Paved Parking Area SQFT	0
Concession Unpaved Parking Area SQFT	0
<b>TOTAL CONCESSION PARKING AREA SQFT</b>	<b>0</b>
Concession Manually Rated Routes SQFT	0

<b>* CYCLE 5 PARKING AREA TOTALS</b>	
Paved Parking (SQFT)	48,340
Unpaved Parking (SQFT)	184,440
<b>TOTAL PARKING (SQFT)</b>	<b>232,780</b>

<b>CYCLE 5 WEIGHTED AVERAGE PARK VALUES</b>	
DCV Driven PCR	N/A
**Manually Rated Routes PCR	N/A
**Parking PCR	90
<b>***Total Equivalent Lane Miles</b>	<b>0.83</b>

\* - The Parking Area Totals SQFT value represents all parking areas collected in Cycle 5, both park and concessionaire.

\*\* - Parking and Manually Rated Routes are assigned the following PCR values based on their observed condition: Construction=-1, Excellent=97, Good=90, Fair=73, and Poor=45.

\*\*\* - Equivalent Lane Miles are calculated by route using the following equations : DCV and Manually Rated Lines Routes=(PAVE\_WIDTHxPAVED\_MI)/11 foot lane. Parking Areas=SQ\_FEET/5280/11. Manually Rated Polygons=SQ\_FEET/5280/11.

# Cycle 5 NPS/RIP Route ID Report

Shading Color Key:

White = Paved Routes, DCV Driven

Yellow = Unpaved Routes, DCV not Driven

Blue = All Paved Parking Areas

Green = All Unpaved Parking Areas

Red text denotes approx. mileage

Grey = Paved Routes, DCV not Driven

Black = State, Local or Private non-NPS Routes

■ = Concession Route Flag ON

\*Unpaved route data was obtained from NPS and was not inventoried by the Road Inventory Program (RIP).

\*\* DCV - Data Collection Vehicle      NC - Not Collected

## General Park Road Functional Classification Table

- Class 1** Principal Park Road/Rural Parkway (Public Roads) Roads which constitute the main access route, circulatory tour, or thoroughfare for park visitors. Route Numbers 1 - 99. Note: Rural parkways (e.g. Natchez Trace) are numbered 1 - 9. State Routes Inventoried for Park. Route Numbers 5000-5999
- Class 2** Connector Park Road (Public Roads) - Roads which provide access within a park to areas of scenic, scientific, recreational or cultural interest, such as overlooks, campgrounds, etc. Route Numbers 100-199.
- Class 3** Special Purpose Park Road (Public Roads) - Roads which provide circulation within public areas, such as campgrounds, picnic areas, visitor center complexes, concessionaire facilities, etc. These roads generally serve low-speed traffic and are often designed for one-way circulation. Route Numbers 200-299.
- Class 4** Primitive Park Roads (Public Roads) - Roads which provide circulation through remote areas and/or access to primitive campgrounds and undeveloped areas. These roads frequently have no minimum design standards and their use may be limited to specially equipped vehicles. Route Numbers 200-299. Note: Functional Classes 3 and 4 have the same route numbers because, historically, they were numbered similarly.
- Class 5** Administrative Access Road (Administrative Roads) - All public roads intended for access to administrative developments or structures such as park offices, employee quarters, or utility areas. Route Numbers 400-499.
- Class 6** Restricted Road (Administrative Roads) - All roads normally closed to the public, including patrol roads, truck trails, and other similar roads. Route Numbers 400-499. Note: Functional Classes 5 and 6 have the same route numbers because historically they were numbered similarly and often there is little distinction between these routes. For example, because utility areas and employee housing are often closed to the public, this restriction would result in classification of FC 6 rather than FC 5.
- Class 7** Urban Parkway (Urban Parkways and City Streets) - These facilities serve high volumes of park and non-park related traffic and are restricted, limited-access facilities in an urban area. This category of roads primarily encompasses the major parkways which serve as gateways to our nation's capital. Other major park roads or portions thereof, however, may be included in this category. Route Numbers 1-9.
- Class 8** City Streets (Urban Parkways and City Streets) - City streets are usually extensions of the adjoining street system that are owned and maintained by the National Park Service. The construction and/or reconstruction should conform with accepted local engineering practice and local conditions. Route Numbers 600-699.

\*\*\*\*\*

A park road system contains those roads within or giving access to a park or other unit of the NPS which are administered by the NPS, or by the Service in cooperation with other agencies. The assignment of a functional classification (FC) to a park road is not based on traffic volumes or design speed, but on the intended use or function of that road or route.

The historic route numbering system also included a 300 number series for interpretive roads, and a 500 series for one-way roads. There are approximately 250 roads nationwide which are designated by the 300 and 500 series. The numbers for these roads will be maintained for reporting consistency. However, since these interpretive and one-way routes are not as clearly tied to a specific functional class, the 300 and 500 series will be discontinued for future use.

5000 route numbers are assigned to Non-NPS Routes that are State, County or City owned which border, traverse, or provide access to Park Facilities or Assets. 5000 Routes are driven for GPS and Video Log only.

## Surface Type Abbreviations:

- AS - Asphaltic Concrete Pavement**
- CO - Portland Cement Concrete Pavement**
- BR - Brick or Pavers Road Bed**
- CB - Cobble Stone Road Bed**
- GR - Gravel Road Bed**
- SA - Sand Road Bed**
- NV - Native or Dirt Material Road Bed**
- OT - Other Materials Road Bed**

**ROUTE IDENTIFICATION CHANGES TO PAVED ROUTES FROM PREVIOUS CYCLE - BITH**

ROUTES ADDED FROM PREVIOUS INVENTORY:			
Route #	Route Name	Reason for Addition	Comments
5000	FM 1276	OTHER	ADDED TO INVENTORY IN CYCLE 5.
5001	FM 2992	OTHER	ADDED TO INVENTORY IN CYCLE 5.
5002	FM 1943	OTHER	ADDED TO INVENTORY IN CYCLE 5.
5003	GORE STORE ROAD	OTHER	ADDED TO INVENTORY IN CYCLE 5.
5004	FM 420	OTHER	ADDED TO INVENTORY IN CYCLE 5.
5005	LAKEVIEW ROAD	OTHER	ADDED TO INVENTORY IN CYCLE 5.
5006	FOUR OAKS RANCH ROAD	OTHER	ADDED TO INVENTORY IN CYCLE 5.
5007	COOKS LAKE ROAD	OTHER	ADDED TO INVENTORY IN CYCLE 5.
ROUTES MODIFIED FROM PREVIOUS INVENTORY:			
Route #	Route Name	Type of Modification	Comments
0904	KIRBY NATURE TRAIL PARKING	RECONSTRUCTED	PARKING LOT WAS RECONSTRUCTED AT A NEW LOCATION. THE LOCATION OF ROUTE 0904 IS NOW WHERE THE REMOVED ROUTE 0903 WAS IN CYCLE 3.

**ROUTE IDENTIFICATION CHANGES TO PAVED ROUTES FROM PREVIOUS CYCLE - BITH**

<b>ROUTES REMOVED FROM PREVIOUS INVENTORY:</b>			
<b>Route #</b>	<b>Route Name</b>	<b>Reason for Removal</b>	<b>Comments</b>
0901	MAINTENANCE HANDICAP PARKING	OTHER	"MAINTENANCE HANDICAP PARKING" WAS REMOVED IN CYCLE 5 BECAUSE THE PARK DOES NOT WANT TO ADD CONCRETE, SINGLE CAR PARKING SPACES INTO FMSS.
0903	STALEY CABIN PARKING	CLOSED/ABANDONED	"STALEY CABIN PARKING" WAS REMOVED FROM THE INVENTORY IN CYCLE 5 BECAUSE IT WAS INCORPORATED INTO THE RECONSTRUCTED ROUTE 0904, "KIRBY NATURE TRAIL PARKING".

# Section 3

## Park Summary Information



Big Thicket National Preserve



Federal Lands Highway  
Road Inventory Program

Note: This park is classified as a Small Park. No Data Collection Vehicle routes existed in this park at the time of data collection. Therefore, there is no data to report for this section.



# Section 4

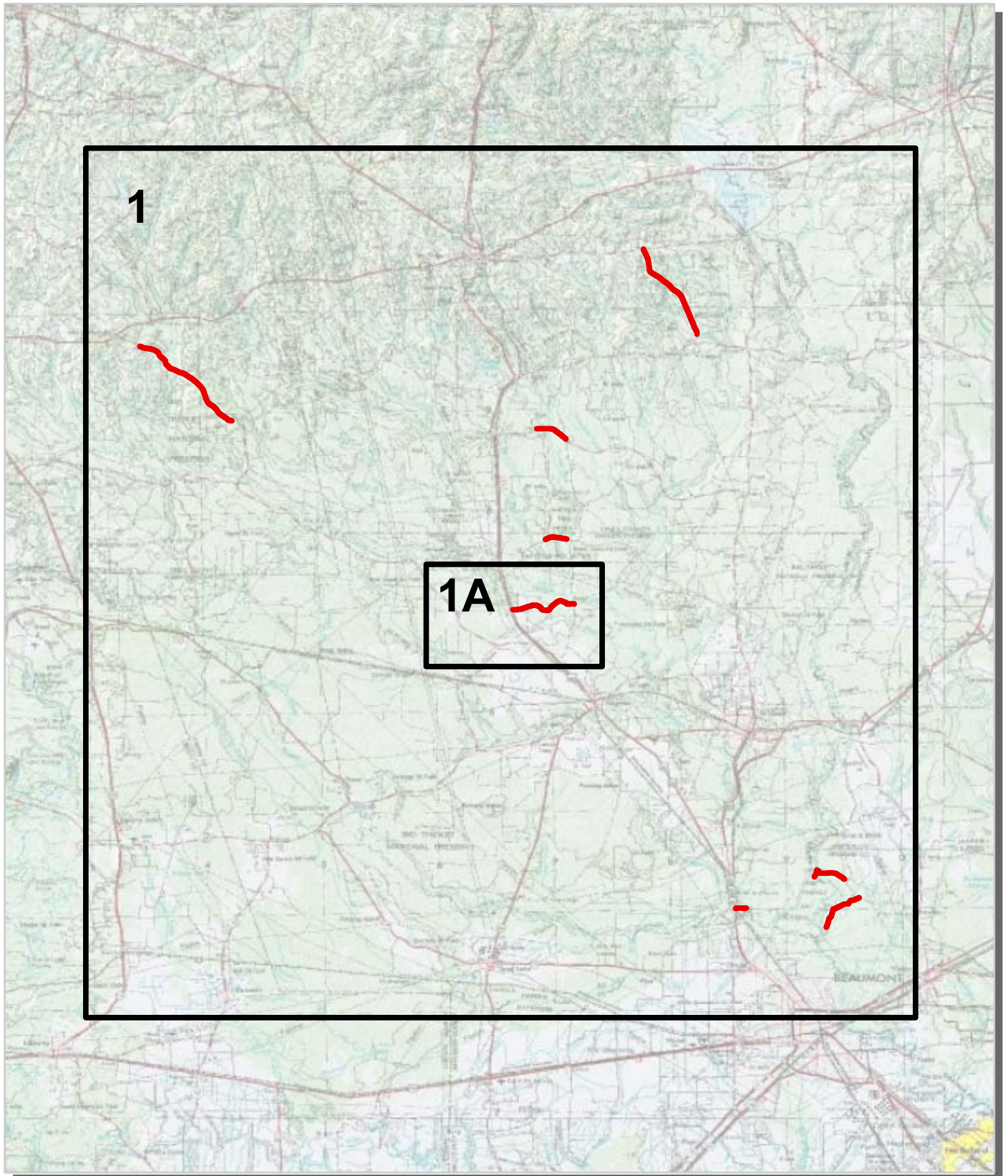
## Park Route Location Maps




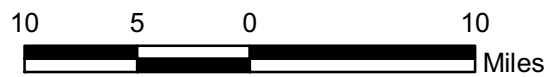
Big Thicket National Preserve



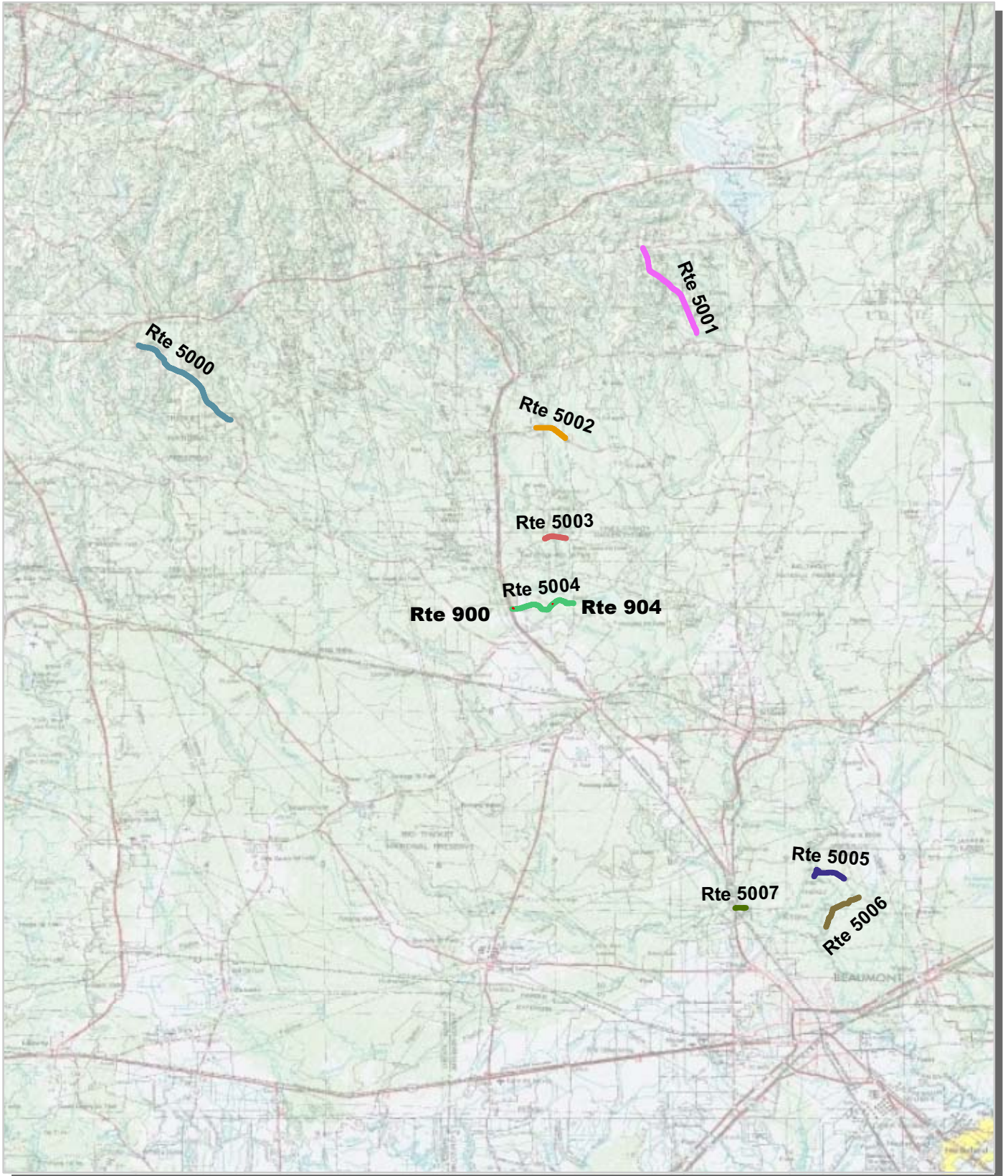
**Big Thicket National Preserve  
Route Location Map  
Key Map**



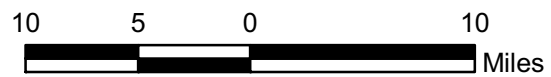
 Cycle 5 Collected Routes



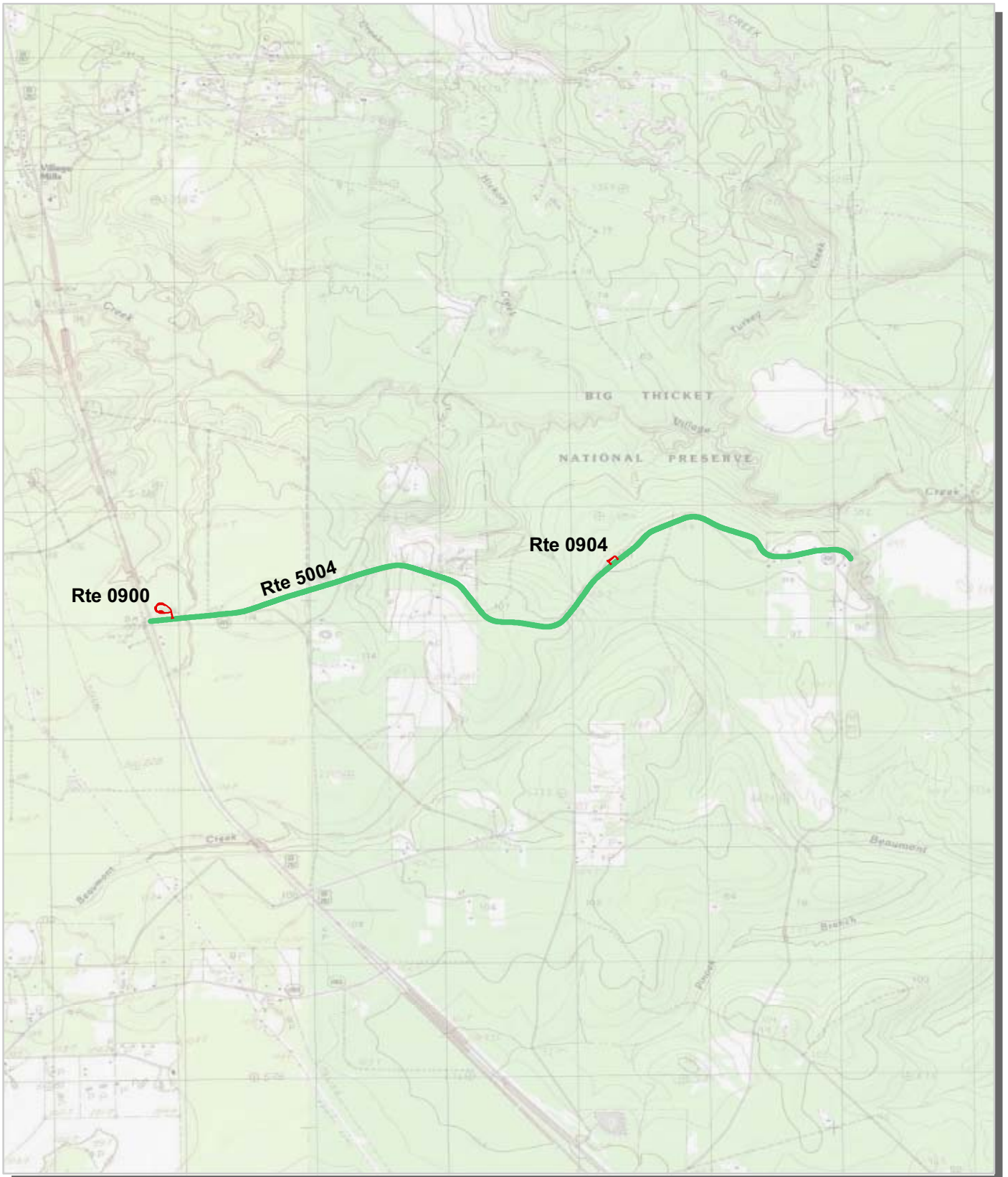
# Big Thicket National Preserve Route Location Map Area 1



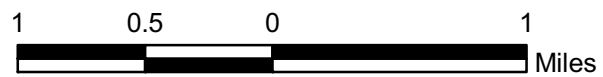
Unique colors used to differentiate routes



# Big Thicket National Preserve Route Location Map Area 1A



Unique colors used to differentiate routes



**Section 5**  
**Paved Route**  
**Condition Rating Sheets**



**Big Thicket National Preserve**



**Federal Lands Highway  
Road Inventory Program**

Note: This park is classified as a Small Park. No Data Collection Vehicle routes existed in this park at the time of data collection. Therefore, there is no data to report for this section.

**Section 6**  
**Manually Rated Paved Route**  
**Condition Rating Sheets**



Big Thicket National Preserve



## **MANUALLY RATED ROUTE CONDITION RATING SHEETS**

No data available for this section.



**Section 7**  
**Parking Area**  
**Condition Rating Sheets**



Big Thicket National Preserve



Federal Lands Highway  
Road Inventory Program

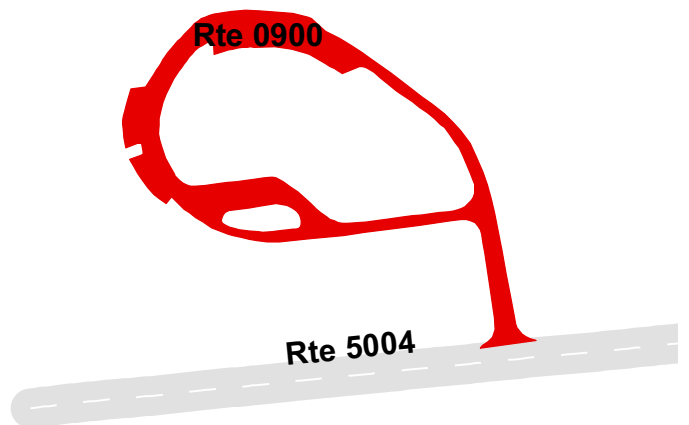
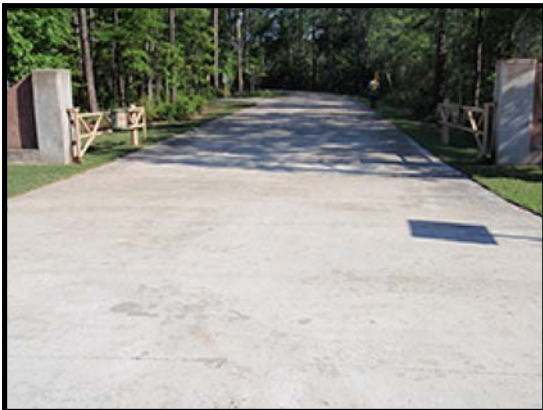
# BIG THICKET NATIONAL PRESERVE

## Route 0900

VISITOR CENTER  
FROM ROUTE 5004 (FM 420)  
TO PARKING

Route Number	Public / NonPublic	Date Visited	Area (sq ft)	Lane Miles *	Surface Type
0900	PUBLIC	4/13/2011	34,589	0.60	CO
Culverts	Drop Inlets	Gates	Curb & Gutter	Curb	PCR
1	2	1	NO CURB AND GUTTER	CONCRETE CURB	GOOD/90

\* Lane miles are based on 11' lane widths



# BIG THICKET NATIONAL PRESERVE

## Route 0904

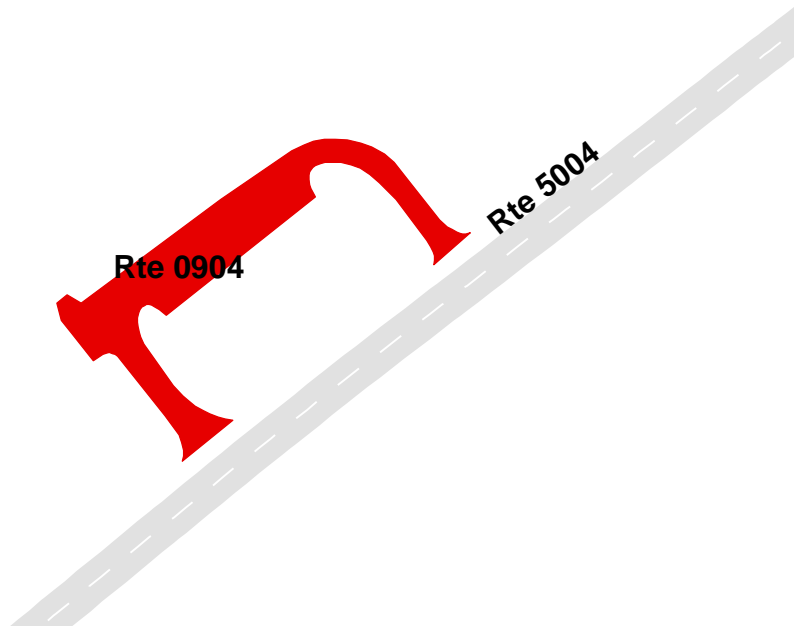
### KIRBY NATURE TRAIL PARKING

FROM ROUTE 5004 (FM 420)

TO ROUTE 5004 (FM 420)

Route Number	Public / NonPublic	Date Visited	Area (sq ft)	Lane Miles *	Surface Type
0904	PUBLIC	4/13/2011	13,751	0.24	AS
Culverts	Drop Inlets	Gates	Curb & Gutter	Curb	PCR
0	0	0	NO CURB AND GUTTER	NO CURB	GOOD/90

\* Lane miles are based on 11' lane widths



0

**Section 8**  
**Parkwide/Route**  
**Maintenance Features Summaries**



Big Thicket National Preserve



Federal Lands Highway  
Road Inventory Program

**BITH: PARKWIDE / ROUTE MAINTENANCE FEATURES SUMMARY**

Note: There are no Data Collection Vehicle routes in this park. However, counts were made of the features listed in the table below.

Route Number	Culverts	Drop Inlets	Gates	Curb	Curb & Gutter
0900	1	2	1	CONCRETE CURB	NO CURB AND GUTTER
0904	0	0	0	NO CURB	NO CURB AND GUTTER
Totals	1	2	1		

NC = Not Collected

NO = This feature does not exist

**Section 9**  
**Route Maintenance Features**  
**Road Logs**



Big Thicket National Preserve



Note: This park is classified as a Small Park. No Data Collection Vehicle routes existed in this park at the time of data collection. Therefore, there is no data to report for this section.

# Section 10 Appendix



Big Thicket National Preserve



Federal Lands Highway  
Road Inventory Program



## GLOSSARY OF TERMS AND ABBREVIATIONS

<u>TERM OR ABBREVIATION</u>	<u>DESCRIPTION OR DEFINITION</u>
Excellent	Excellent rating with an index value of 97
Fair	Fair rating with an index value of 73
Func. Class	Functional Classification (see Route ID, Section 2)
Good	Good rating with an index value of 90
MRR	Manually Rated Route
MRL	Manually Rated Line
MRP	Manually Rated Polygon
N/A	Not Applicable
NC	Not Collected
PKG	Parking Area
Poor	Poor rating with an index value of 45

### **GPS on Manually Rated Roads (MRR)**

Parking areas, some roads, and other paved areas that are not fully drivable with the RIP Data Collection Vehicle are collected manually by field technicians. GPS is collected for these routes using portable Trimble GPS backpack units.

## **Geodatabase – Background and Metadata**

In addition to this park report, a *geodatabase* containing both tabular and spatial data specific to this park has been provided. All data disseminated in the preceding report has been obtained from the tables and fields within said geodatabase. The geodatabase can be referenced for tabular data via Microsoft Access or for both tabular and spatial data via ESRI's ArcGIS Suite of software which consists of; ArcMap, ArcCatalog and ArcExplorer. Consolidating the RIP data into one database creates a seamless relationship of tables and geographic data. It will allow RIP to facilitate easier updates and enhancements in the future.

A geodatabase can be thought of as simply a database containing spatial data. Many different tables are contained with the park's geodatabase. A complete and thorough description of the tables and fields contained within this geodatabase can be found in the *metadata*. The metadata is attached directly within the geodatabase and can be accessed via ESRI's ArcCatalog.