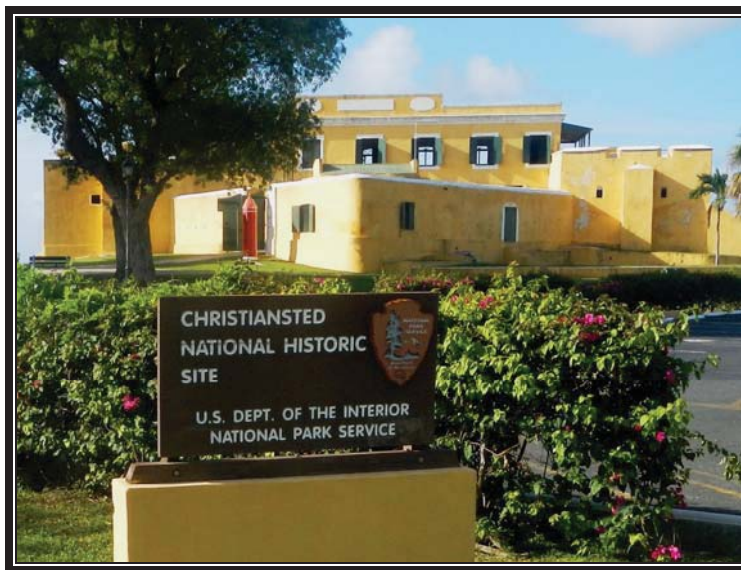




# Federal Lands Highway Road Inventory Program

Road Inventory and Condition Assessment

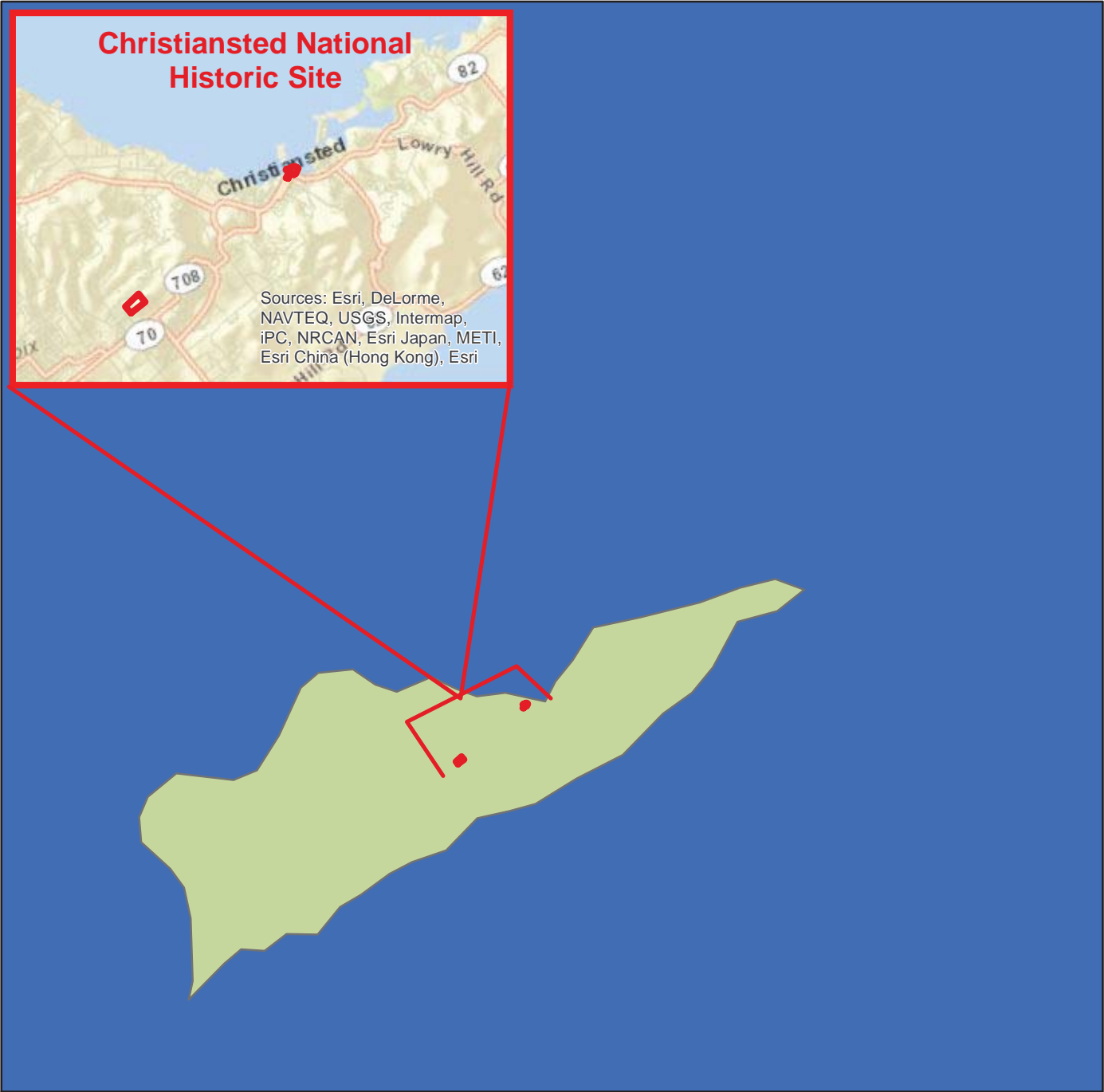


## Christiansted National Historic Site CHRI

### Cycle 5 Report

**Prepared By: Federal Highway Administration  
Road Inventory Program (RIP)  
Data Collected: 05/2013  
Report Date: 09/2013**

# Christiansted National Historic Site in Virgin Islands





## TABLE OF CONTENTS

<b><u>SECTION</u></b>	<b><u>PAGE</u></b>
<b>1. INTRODUCTION</b>	<b>1 - 1</b>
<b>2. PARK ROUTE INVENTORY</b> Route IDs, Subcomponents & Changes Report (As Applicable)	<b>2 - 1</b>
<b>3. PARK SUMMARY INFORMATION</b>	<b>3 - 1</b>
<b>4. PARK ROUTE LOCATION MAPS</b> Route Location Key Map Route Location Area Map	<b>4 - 1</b> <b>4 - 2</b>
<b>5. PAVED ROUTE CONDITION RATING SHEETS</b>	<b>5 - 1</b>
<b>6. MANUALLY RATED PAVED ROUTE CONDITION RATING SHEETS</b> MRR Pages	<b>6 - 1</b>
<b>7. PARKING AREA CONDITION RATING SHEETS</b> Paved Parking Area Pages	<b>7 - 1</b>
<b>8. PARKWIDE / ROUTE MAINTENANCE FEATURES SUMMARIES</b>	<b>8 - 1</b>
<b>9. ROUTE MAINTENANCE FEATURES ROAD LOGS</b>	<b>9 - 1</b>
<b>10. APPENDIX</b> Glossary of Terms and Abbreviations GPS on Manually Rated Routes Geodatabase Background and Metadata	<b>10 - 1</b> <b>10 - 2</b> <b>10 - 3</b>

# Section 1 Introduction



Christiansted National Historic Site



Federal Lands Highway  
Road Inventory Program

## INTRODUCTION

The Federal Highway Administration, (FHWA), in the mid 1970s, was charged with the task of identifying surface condition deficiencies and corrective priorities on National Park Service (NPS) roads and parkways. Additionally, FHWA was tasked with establishing an integrated maintenance features inventory, locating features such as culverts, guardrails, and signs, among others, along NPS roads and parkways. As a result, in 1976 the NPS and FHWA entered into an MOA (Memorandum Of Agreement) which established the RIP (Road Inventory Program). This MOA was terminated and revised in 1980 to establish a new MOA aiming to update RIP data and develop a long-range program to improve and maintain NPS roads to designated condition standards and establish a maintenance management program.

The FHWA completed this initial phase of the RIP in the early 1980s. As a result of this effort, each NPS site included in the study received a RIP Report known as the “Brown Book” which included the information collected during this first RIP phase.

In the 1990s, the effort was again renewed to update and maintain the RIP data. By this time the computer age was upon us and a process was employed that relied heavily on electronic data collection and computer technology. A cyclical program was developed and the RIP completed two cycles of data collection from 1994 to 2001. Cycle 1, starting in 1994, was conducted in 44 “large parks” (parks containing 10 or more paved route miles). Cycle 2 began in 1997 and comprised 79 large parks and 5 small parks totaling 4,874 paved route miles. Each of these parks received a RIP Report known as the “Blue Book”. Cycle 3, from 2001 to 2004, was conducted in all parks, large and small, that contained any paved routes, including parking areas and, again, each park received a RIP Report and associated electronic files.

Cycle 4 was initiated in the spring of 2006 covering 86 large parks and several associated small parks consisting of 5,553 paved route miles and 6,232 paved parking areas. Data collection has been completed for Cycle 4 and all data has been delivered to the NPS.

In 2005, the FHWA began implementing the use of a Pavement Management System (PMS) to assist the NPS in prioritizing Pavement Maintenance and Rehabilitation activities. The PMS used by FHWA is the Highway Pavement Management Application (HPMA) and this software has the ability to store inventory and condition data from RIP and forecast future performance using prediction models. Outputs include performance and condition reports at the National, Regional, Park, or Route level. A regional prioritized list and optimization have been produced for most regions and the Federal Highway Deferred Maintenance is calculated via the HPMA.

In an effort to improve the accuracy of treatment recommendations and pavement condition descriptions, an extensive study was completed throughout 2010 that has resulted in changes to the RIP condition reporting method, specifically the distresses and indexes that comprise the Pavement Condition Rating (PCR). It was determined that a better representation of PCR could

be achieved by modifying the relative impact certain distresses would have on the overall rating. The changes that were implemented were endorsed by management at both the FHWA and NPS in October 2010. These changes will allow greater use of RIP and HPMA data for not simply condition data reporting, but also as a reliable tool for project identification and selection. Because of these changes, the PCR Condition ratings reported in Cycle 5 do not directly relate to the condition ratings reported in previous cycle RIP Reports. For more detailed information about the changes, see Section 3 and Section 10 in this RIP Report.

Cycle 5 has launched in the summer of 2010 and will again comprise all parks, large and small, that are served by paved roads and/or parking areas. For Cycle 5, the decision was made to collect condition data in large parks on Functional Class 1, 2, and 7 paved routes only, as well as any new routes that were previously not collected. In small parks, all paved routes and parking areas will be collected. As a result, this will include 81 large parks with 4,459 paved route miles and 231 small parks with 529 paved route miles and associated paved parking areas.

Since 1984, the Road Inventory Program has been funded through the Federal Lands Highway Park Roads and Parkways (PRP) Program. Currently, coordination of the RIP with FLH is under the NPS Washington Headquarters Park Facility Management Division. The FLH Washington office coordinates policy and prepares national reports and needs assessment studies for Congress.

In 1998, the Transportation Equity Act for the 21<sup>st</sup> Century (TEA-21) amended Title 23 U.S.C., and inserted Section 204(a)(6) requiring the FHWA and NPS, to develop by rule, a Pavement Management System (PMS) applied to park roads and parkways serving the National Park System.

FLH is responsible for the accuracy of all data presented in this report. Any questions or comments concerning the contents of this report should be directed to the national RIP Coordinator located in Sterling, Virginia.

Respectfully,

FHWA RIP Team

FHWA/Eastern Federal Lands  
21400 Ridgetop Circle  
Sterling, VA 20166  
(703) 404-6371

FHWA/Central Federal Lands  
12300 West Dakota Ave  
Lakewood, CO 80228  
(720) 963-3556

## Section 2

# Park Route Inventory



Christiansted National Historic Site



Federal Lands Highway  
Road Inventory Program





# Cycle 5 NPS/RIP Route ID Report

Road Inventory Program 09/03/2013

(Numerical By Route #)

Page 2 of 3

Shading Color Key:  
Red text denotes approx. mileage

White = Paved Routes, DCV Driven
Grey = Paved Routes, DCV not Driven

Yellow = Unpaved Routes, DCV not Driven
Black = State, Local or Private non-NPS Routes

Blue = All Paved Parking Areas
■ = Concession Route Flag ON

Green = All Unpaved Parking Areas
-----------------------------------

\*Unpaved route data was obtained from NPS and was not inventoried by the Road Inventory Program (RIP).

\*\* DCV - Data Collection Vehicle      NC - Not Collected

## CYCLE 5 SUMMARY TOTALS FOR CHRISTIANSTED NATIONAL HISTORIC SITE

<u>CYCLE 5 ROUTE TOTALS</u>	
DCV Driven Route Miles	0.00
Manually Rated Route Miles	0.56
<b>TOTAL PARK ROUTE MILES COLLECTED IN CYCLE 5</b>	<b>0.56</b>
Manually Rated Routes (SQFT)	4,066
<b>TOTAL UNPAVED PARK ROUTE MILES</b>	<b>0.12</b>

<u>CYCLE 5 CONCESSION TOTALS</u>	
Concession Paved Route Miles	0.00
Concession Unpaved Route Miles	0.00
<b>TOTAL CONCESSION ROUTE MILES</b>	<b>0.00</b>
Concession Paved Parking Area SQFT	0
Concession Unpaved Parking Area SQFT	0
<b>TOTAL CONCESSION PARKING AREA SQFT</b>	<b>0</b>
Concession Manually Rated Routes SQFT	0

<u>* CYCLE 5 PARKING AREA TOTALS</u>	
Paved Parking (SQFT)	38,258
Unpaved Parking (SQFT)	2,640
<b>TOTAL PARKING (SQFT)</b>	<b>40,898</b>

<u>CYCLE 5 WEIGHTED AVERAGE PARK VALUES</u>	
DCV Driven PCR	N/A
**Manually Rated Routes PCR	59
**Parking PCR	61
<b>***Total Equivalent Lane Miles</b>	<b>1.66</b>

\* - The Parking Area Totals SQFT value represents all parking areas collected in Cycle 5, both park and concessionaire.

\*\* - Parking and Manually Rated Routes are assigned the following PCR values based on their observed condition: Construction=-1, Excellent=97, Good=90, Fair=73, and Poor=45.

\*\*\* - Equivalent Lane Miles are calculated by route using the following equations : DCV and Manually Rated Lines Routes=(PAVE\_WIDTHxPAVED\_MI)/11 foot lane. Parking Areas=SQ\_FEET/5280/11. Manually Rated Polygons=SQ\_FEET/5280/11.

# Cycle 5 NPS/RIP Route ID Report

Shading Color Key:  
Red text denotes approx. mileage

White = Paved Routes, DCV Driven
Grey = Paved Routes, DCV not Driven

Yellow = Unpaved Routes, DCV not Driven
Black = State, Local or Private non-NPS Routes

Blue = All Paved Parking Areas
■ = Concession Route Flag ON

Green = All Unpaved Parking Areas
-----------------------------------

\*Unpaved route data was obtained from NPS and was not inventoried by the Road Inventory Program (RIP).

\*\* DCV - Data Collection Vehicle      NC - Not Collected

## General Park Road Functional Classification Table

- Class 1** Principal Park Road/Rural Parkway (Public Roads) - Roads which constitute the main access route, circulatory tour, or thoroughfare for park visitors. Route Numbers 1 - 99. Note: Rural parkways (e.g. Natchez Trace) are numbered 1 - 9. State Routes Inventoried for Park. Route Numbers 5000-5999
- Class 2** Connector Park Road (Public Roads) - Roads which provide access within a park to areas of scenic, scientific, recreational or cultural interest, such as overlooks, campgrounds, etc. Route Numbers 100-199.
- Class 3** Special Purpose Park Road (Public Roads) - Roads which provide circulation within public areas, such as campgrounds, picnic areas, visitor center complexes, concessionaire facilities, etc. These roads generally serve low-speed traffic and are often designed for one-way circulation. Route Numbers 200-299.
- Class 4** Primitive Park Roads (Public Roads) - Roads which provide circulation through remote areas and/or access to primitive campgrounds and undeveloped areas. These roads frequently have no minimum design standards and their use may be limited to specially equipped vehicles. Route Numbers 200-299. Note: Functional Classes 3 and 4 have the same route numbers because, historically, they were numbered similarly.
- Class 5** Administrative Access Road (Administrative Roads) - All public roads intended for access to administrative developments or structures such as park offices, employee quarters, or utility areas. Route Numbers 400-499.
- Class 6** Restricted Road (Administrative Roads) - All roads normally closed to the public, including patrol roads, truck trails, and other similar roads. Route Numbers 400-499. Note: Functional Classes 5 and 6 have the same route numbers because historically they were numbered similarly and often there is little distinction between these routes. For example, because utility areas and employee housing are often closed to the public, this restriction would result in classification of FC 6 rather than FC 5.
- Class 7** Urban Parkway (Urban Parkways and City Streets) - These facilities serve high volumes of park and non-park related traffic and are restricted, limited-access facilities in an urban area. This category of roads primarily encompasses the major parkways which serve as gateways to our nation's capital. Other major park roads or portions thereof, however, may be included in this category. Route Numbers 1-9.
- Class 8** City Streets (Urban Parkways and City Streets) - City streets are usually extensions of the adjoining street system that are owned and maintained by the National Park Service. The construction and/or reconstruction should conform with accepted local engineering practice and local conditions. Route Numbers 600-699.

\*\*\*\*\*

A park road system contains those roads within or giving access to a park or other unit of the NPS which are administered by the NPS, or by the Service in cooperation with other agencies. The assignment of a functional classification (FC) to a park road is not based on traffic volumes or design speed, but on the intended use or function of that road or route.

The historic route numbering system also included a 300 number series for interpretive roads, and a 500 series for one-way roads. There are approximately 250 roads nationwide which are designated by the 300 and 500 series. The numbers for these roads will be maintained for reporting consistency. However, since these interpretive and one-way routes are not as clearly tied to a specific functional class, the 300 and 500 series will be discontinued for future use.

5000 route numbers are assigned to Non-NPS Routes that are State, County or City owned which border, traverse, or provide access to Park Facilities or Locations. 5000 Routes are driven for GPS and Video Log only.

## Surface Type Abbreviations:

- AS - Asphaltic Concrete Pavement**
- CO - Portland Cement Concrete Pavement**
- BR - Brick or Pavers Road Bed**
- CB - Cobble Stone Road Bed**
- GR - Gravel Road Bed**
- SA - Sand Road Bed**
- NV - Native or Dirt Material Road Bed**
- OT - Other Materials Road Bed**

# NPS/RIP Subcomponent Details for CHRI

Road Inventory Program 09/03/2013

(Numerical By Subcomponent #)

Page 1 of 1

Shading Color Key:

Red text denotes approx. mileage

White = Paved Routes, DCV Driven

Yellow = Unpaved Routes, DCV not Driven

Blue = All Paved Parking Areas

Green = All Unpaved Parking Areas

Grey = Paved Routes, DCV not Driven

Black = State, Local or Private non-NPS Routes

■ = Concession Route Flag ON

\*Unpaved route data was obtained from NPS and was not inventoried by the Road Inventory Program (RIP).

## CHRI

### CHRISTIANSTED NATIONAL HISTORIC SITE

Rte. No.	FMSS No.	Cycle Collected	Route Description		Concess Route	Func. Class	Paved Miles	Un-Paved Miles	Total Route Length	Manual Rated SQ/FT
			Route Name	From						
0400ZZ	75405	5	SION RIDGE ROADS	FROM PARK BOUNDARY		6	0.29	0.12	0.41	19,150

### CHRI-0400ZZ Subcomponent Breakdown

Rte. No.	FMSS No.	Cycle Collected	Route Description		Concess Route	Func. Class	Paved Miles	Un-Paved Miles	Total Route Length	Manual Rated SQ/FT
			Route Name	From						
0400AZ	75405	5	SION RIDGE ROAD	FROM PARK BOUNDARY		6	0.17	0.00	0.17	11,737
0400BZ	75405	5	SION FARM ROAD	FROM ROUTE 0903 (SION FARM PARKING LOT)		6	0.12	0.00	0.12	7,413
0400CZ	75405	NC	SION RIDGE ROAD UNPAVED	FROM ROUTE 0903 (SION FARM PARKING LOT)		6	0.00	0.12	0.12	

**ROUTE IDENTIFICATION CHANGES TO PAVED ROUTES FROM PREVIOUS CYCLE - CHRI**

**ROUTES ADDED FROM PREVIOUS INVENTORY:**

Route #	Route Name	Reason for Addition	Comments
0010	COMPANY STREET	OTHER	PAVED ROUTE ADDED IN CYCLE 5.
0011	HOSPITAL STREET	OTHER	PAVED ROUTE ADDED IN CYCLE 5.
0012	KING STREET	OTHER	PAVED ROUTE ADDED IN CYCLE 5.
0014	COMPANY STREET EXTENSION	OTHER	PAVED ROUTE ADDED IN CYCLE 5.
0200	SCALE HOUSE ACCESS LOOP	OTHER	PAVED ROUTE ADDED IN CYCLE 5.
0400ZZ	SION RIDGE ROADS	OTHER	PAVED AND UNPAVED ROUTES ADDED IN CYCLE 5.
0902	GUINEA COMPANY WAREHOUSE PARKING	OTHER	PAVED PARKING ADDED IN CYCLE 5.
0903	SION FARM PARKING LOT	OTHER	PAVED PARKING ADDED IN CYCLE 5.
5000	CHURCH STREET	OTHER	NON-NPS ROUTE ADDED TO INVENTORY IN CYCLE 5.

**ROUTES MODIFIED FROM PREVIOUS INVENTORY:**

Route #	Route Name	Type of Modification	Comments
0901	MAINTENANCE AREA PARKING	SURFACE TYPE CHANGE	PARKING AREA WAS PAVED IN CYCLE 3, BUT IS NOW UNPAVED IN CYCLE 5.

# Section 3

## Park Summary Information



Christiansted National Historic Site



Federal Lands Highway  
Road Inventory Program

Note: This park is classified as a Small Park. No Data Collection Vehicle routes existed in this park at the time of data collection. Therefore, there is no data to report for this section.

# Section 4

## Park Route Location Maps

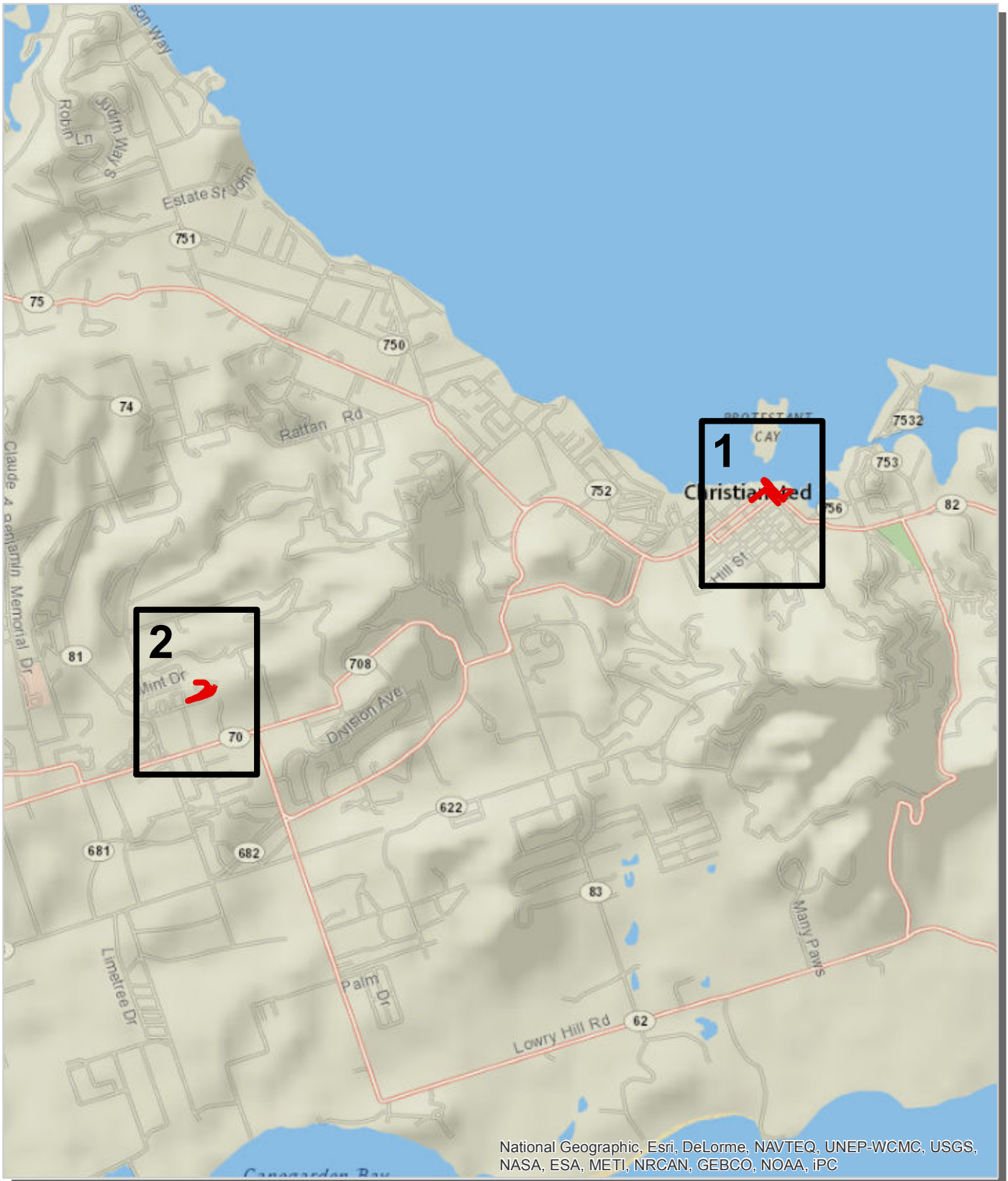


Christiansted National Historic Site

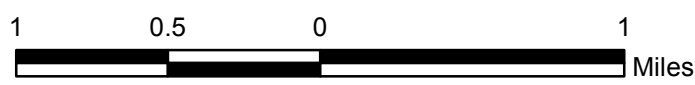


Federal Lands Highway  
Road Inventory Program

# Christiansted National Historic Site Route Location Map Key Map



— Cycle 5 Collected Routes





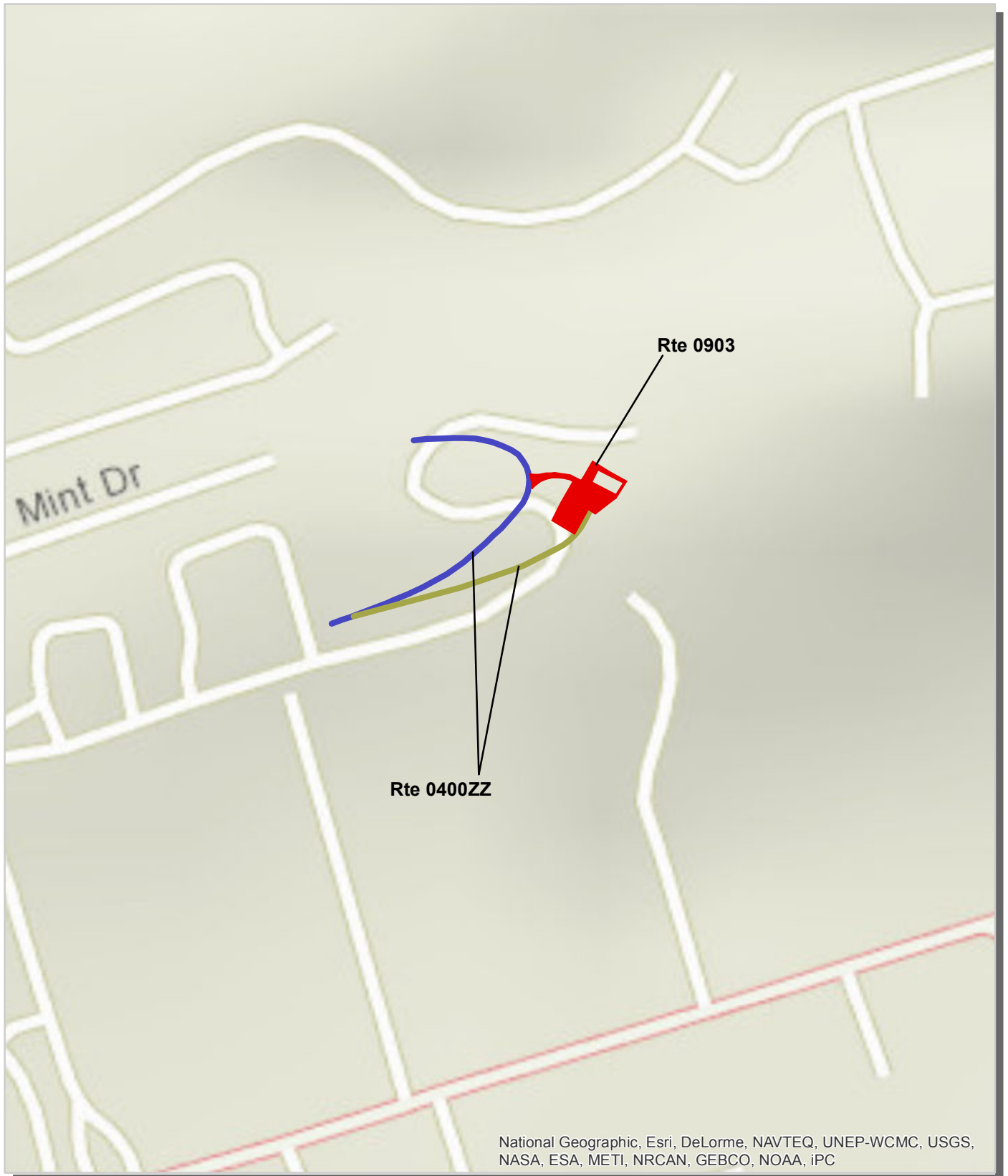
**Christiansted National Historic Site  
Route Location Map  
Area 1**



Unique colors used to differentiate routes



**Christiansted National Historic Site  
Route Location Map  
Area 2**



Unique colors used to differentiate routes



# Section 5 Paved Route Condition Rating Sheets



Christiansted National Historic Site



Federal Lands Highway  
Road Inventory Program

Note: This park is classified as a Small Park. No Data Collection Vehicle routes existed in this park at the time of data collection. Therefore, there is no data to report for this section.

**Section 6**  
**Manually Rated Paved Route**  
**Condition Rating Sheets**



Christiansted National Historic Site



**Federal Lands Highway  
Road Inventory Program**

# CHRISTIANSTED NATIONAL HISTORIC SITE

## Route 0010

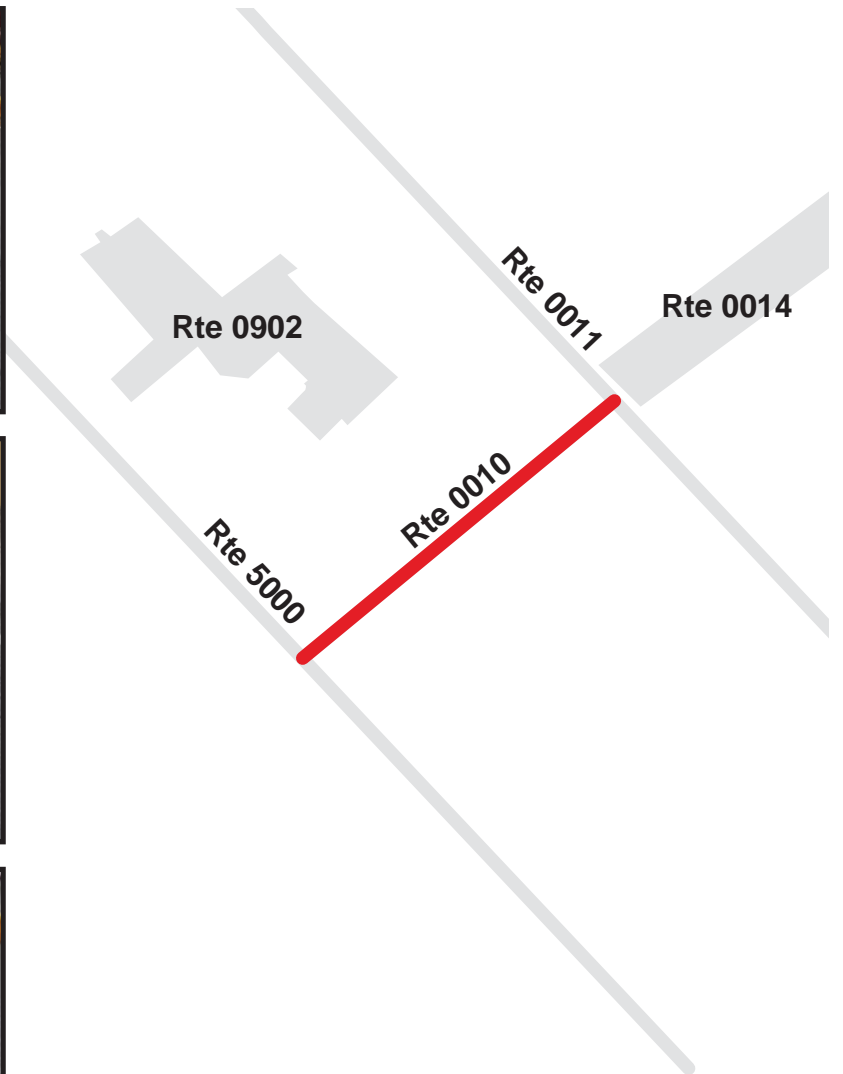
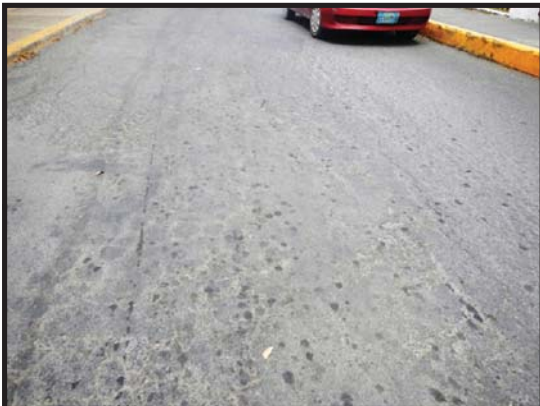
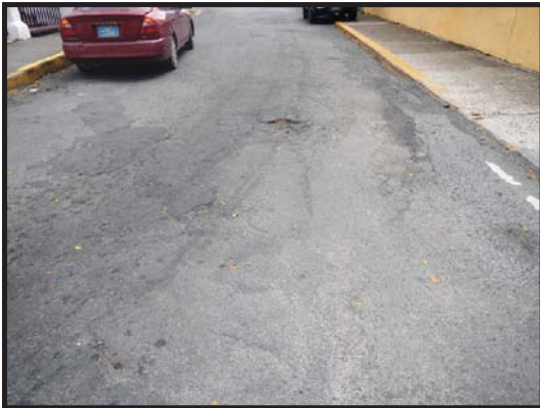
### COMPANY STREET

FROM ROUTE 5000 (CHURCH STREET)

TO ROUTE 0011 (HOSPITAL STREET)

Route Number	Public / NonPublic	Date Visited	Area (sq ft)	Lane Miles *	Paved Length (mi)	Paved Width (ft)
0010	PUBLIC	5/18/2013	1,806	0.03	0.02	19
Culverts	Drop Inlets	Gates	Curb & Gutter	Curb	PCR	Surface Type
0	0	0	NO CURB AND GUTTER	CONCRETE CURB	POOR/45	AS

\* Lane miles are based on 11' lane widths



130                      65                      0                      130



Feet



# CHRISTIANSTED NATIONAL HISTORIC SITE

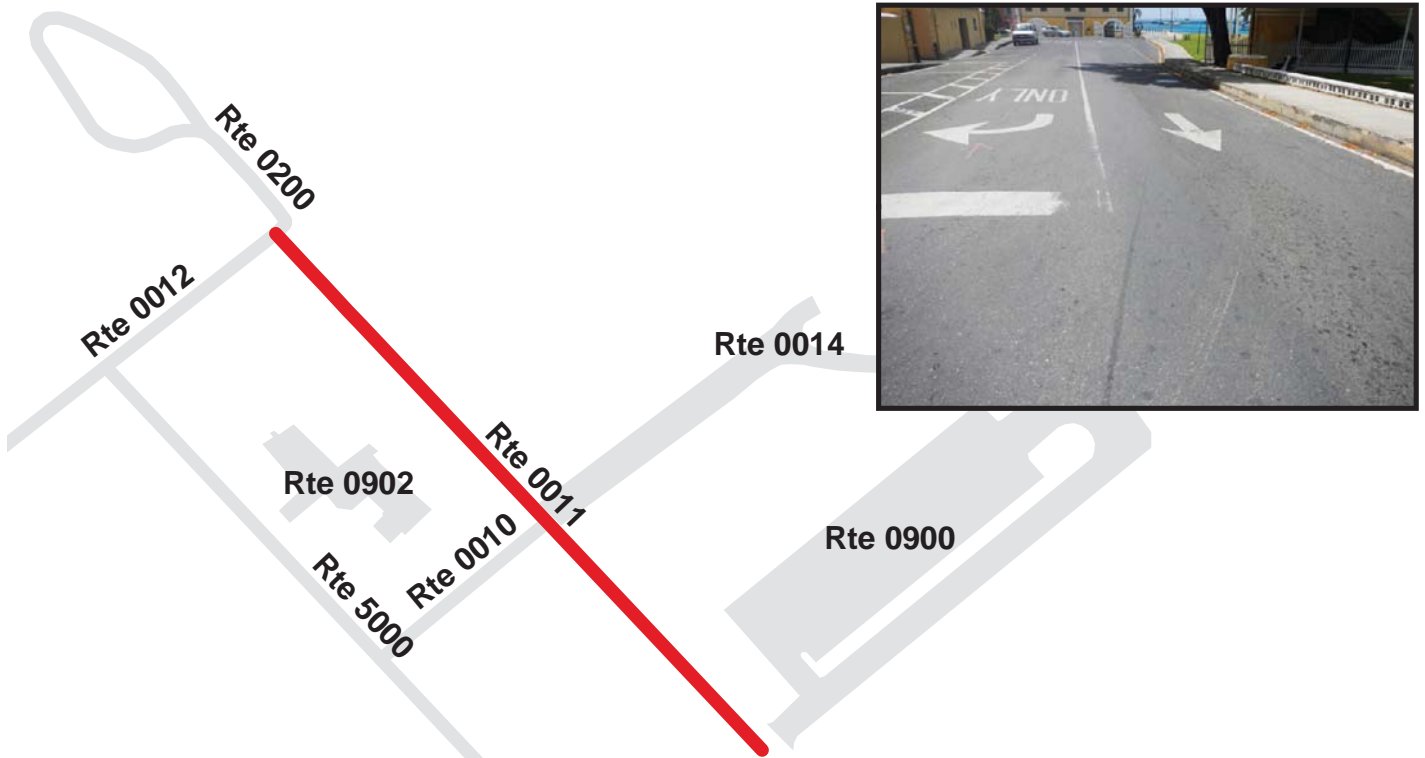
## Route 0011

### HOSPITAL STREET

FROM END OF ROUTE 0012 (KING STREET) AND ROUTE 0200 (SCALE HOUSE ACCESS LOOP) ON LEFT  
TO QUEEN STREET ON RIGHT AND ROUTE 0900 (FORT VISITOR PARKING) ON LEFT

Route Number	Public / NonPublic	Date Visited	Area (sq ft)	Lane Miles *	Paved Length (mi)	Paved Width (ft)
0011	PUBLIC	5/20/2013	17,952	0.31	0.09	40
Culverts	Drop Inlets	Gates	Curb & Gutter	Curb	PCR	Surface Type
1	0	0	NO CURB AND GUTTER	CONCRETE CURB	FAIR/73	AS

\* Lane miles are based on 11' lane widths



# CHRISTIANSTED NATIONAL HISTORIC SITE

## Route 0012

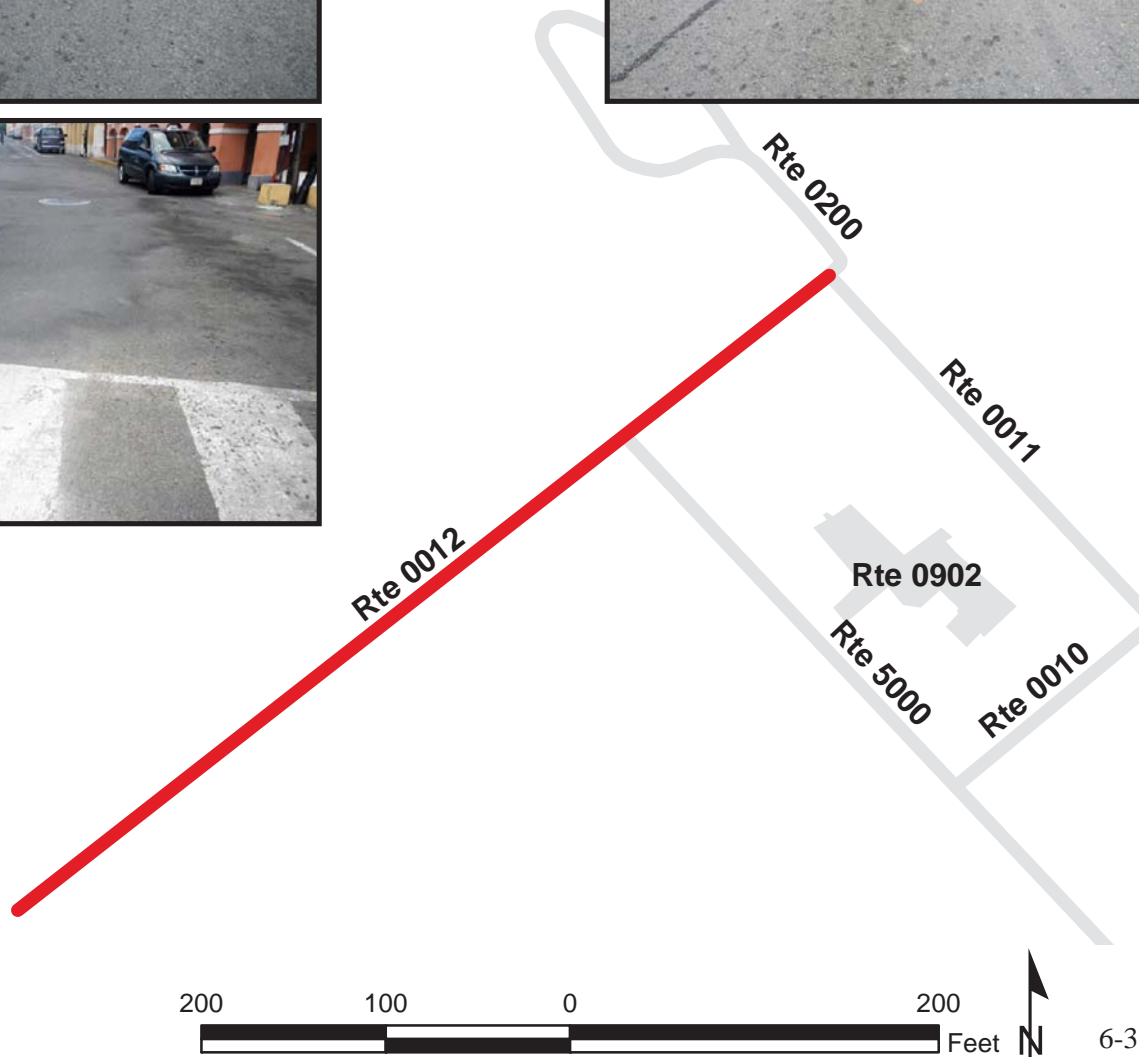
### KING STREET

FROM QUEEN CROSS STREET

TO BEGINNING OF ROUTE 0011 (HOSPITAL STREET) AND ROUTE 0200 (SCALE HOUSE ACCESS LOOP) ON LEFT

Route Number	Public / NonPublic	Date Visited	Area (sq ft)	Lane Miles *	Paved Length (mi)	Paved Width (ft)
0012	PUBLIC	5/19/2013	10,803	0.19	0.09	22
Culverts	Drop Inlets	Gates	Curb & Gutter	Curb	PCR	Surface Type
0	0	0	NO CURB AND GUTTER	CONCRETE CURB	POOR/45	AS

\* Lane miles are based on 11' lane widths





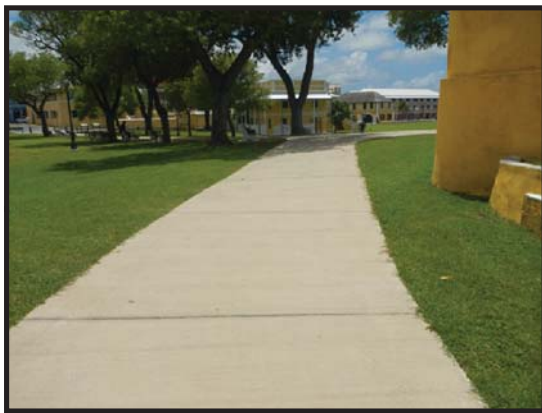
# CHRISTIANSTED NATIONAL HISTORIC SITE

## Route 0014

COMPANY STREET EXTENSION  
FROM ROUTE 0011 (HOSPITAL STREET)  
TO ROUTE 0900 (FORT VISITOR PARKING)

Route Number	Public / NonPublic	Date Visited	Area (sq ft)	Lane Miles *	Surface Type
0014	PUBLIC	5/18/2013	4,066	0.07	CO
Culverts	Drop Inlets	Gates	Curb & Gutter	Curb	PCR
0	0	0	NO CURB AND GUTTER	NO CURB	GOOD/90

\* Lane miles are based on 11' lane widths



# CHRISTIANSTED NATIONAL HISTORIC SITE

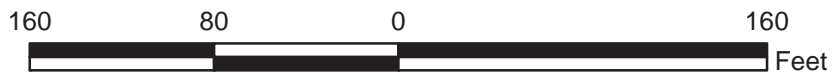
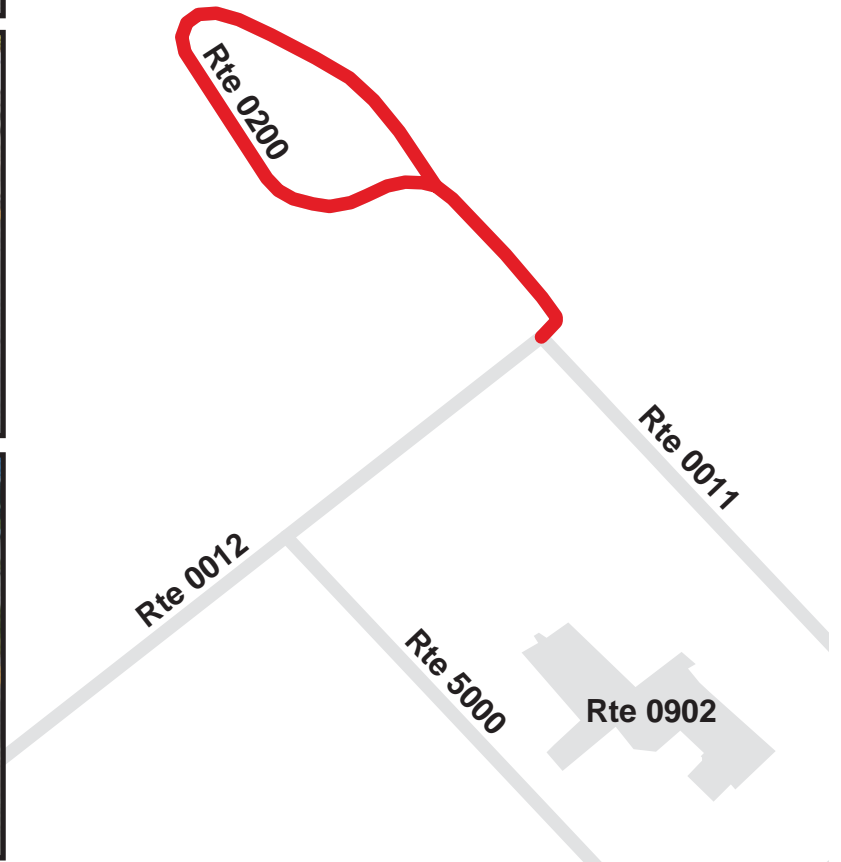
## Route 0200

### SCALE HOUSE ACCESS LOOP

FROM ROUTE 0011 (HOSPITAL STREET) ON RIGHT AND ROUTE 0012 (KING STREET)  
TO END OF LOOP

Route Number	Public / NonPublic	Date Visited	Area (sq ft)	Lane Miles *	Paved Length (mi)	Paved Width (ft)
0200	PUBLIC	5/19/2013	4,562	0.08	0.07	12
Culverts	Drop Inlets	Gates	Curb & Gutter	Curb	PCR	Surface Type
0	0	0	NO CURB AND GUTTER	CONCRETE CURB	FAIR/73	CO

\* Lane miles are based on 11' lane widths



# CHRISTIANSTED NATIONAL HISTORIC SITE

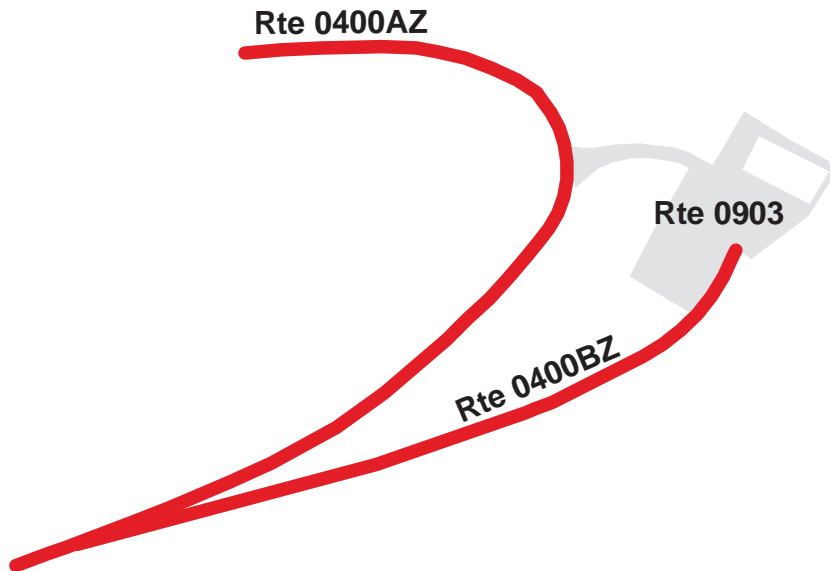
## Route 0400ZZ

SION RIDGE ROADS  
FROM PARK BOUNDARY  
TO END

Summary Record

Route Number	Public / NonPublic	Date Visited	Area (sq ft)	Lane Miles *	Paved Length (mi)	Paved Width (ft)
0400ZZ	NONPUBLIC	5/19/2013	19,150	0.33	0.29	12.6
Culverts	Drop Inlets	Gates	Curb & Gutter	Curb	PCR	Surface Type
0	0	3	NO CURB AND GUTTER	NO CURB	SUMMARY/45	AS

\* Lane miles are based on 11' lane widths



# CHRISTIANSTED NATIONAL HISTORIC SITE

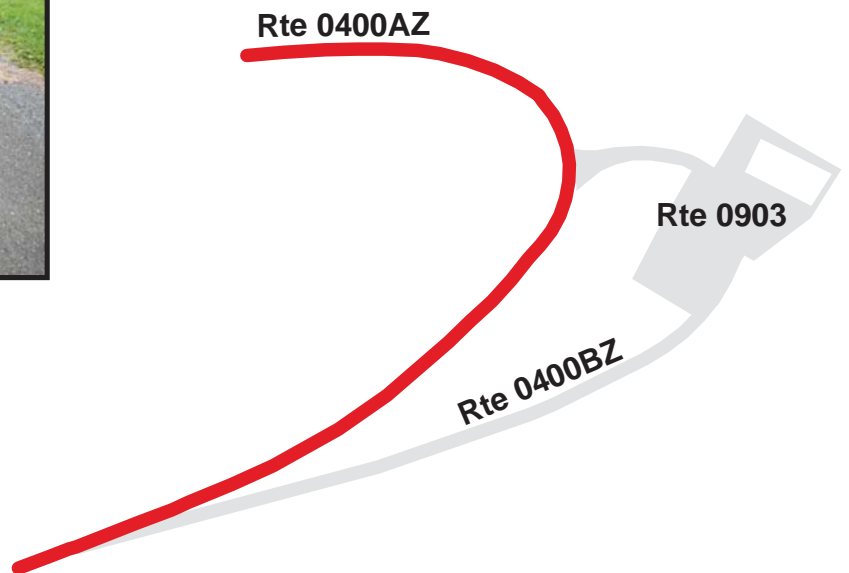
## Route 0400AZ

SION RIDGE ROAD  
FROM PARK BOUNDARY  
TO DEAD END

Subcomponent Record

Route Number	Public / NonPublic	Date Visited	Area (sq ft)	Lane Miles *	Paved Length (mi)	Paved Width (ft)
0400AZ	NONPUBLIC	5/19/2013	11,737	0.20	0.17	13
Culverts	Drop Inlets	Gates	Curb & Gutter	Curb	PCR	Surface Type
0	0	2	NO CURB AND GUTTER	NO CURB	POOR/45	AS

\* Lane miles are based on 11' lane widths



# CHRISTIANSTED NATIONAL HISTORIC SITE

## Route 0400BZ

### SION FARM ROAD

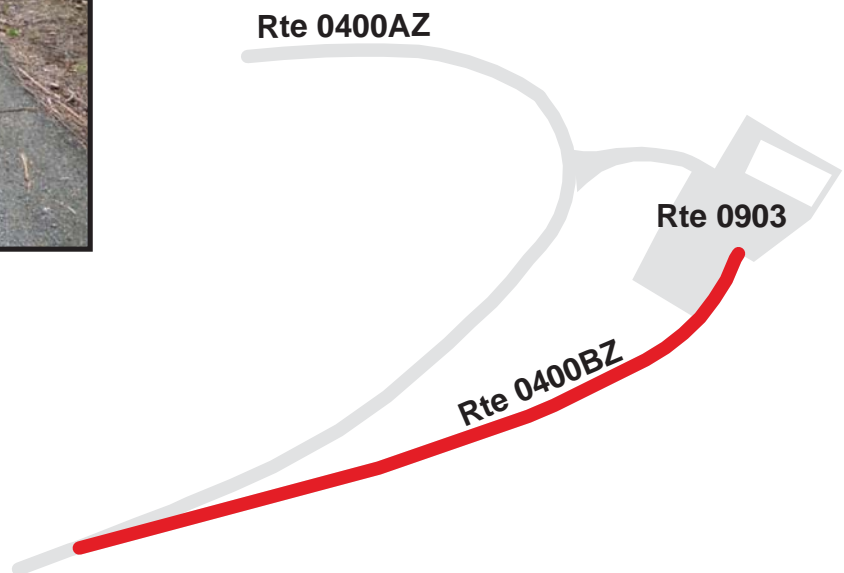
FROM ROUTE 0903 (SION FARM PARKING LOT)

TO ROUTE 0400AZ (SION RIDGE ROAD)

#### Subcomponent Record

Route Number	Public / NonPublic	Date Visited	Area (sq ft)	Lane Miles *	Paved Length (mi)	Paved Width (ft)
0400BZ	NONPUBLIC	5/19/2013	7,413	0.13	0.12	12
Culverts	Drop Inlets	Gates	Curb & Gutter	Curb	PCR	Surface Type
0	0	1	NO CURB AND GUTTER	NO CURB	POOR/45	AS

\* Lane miles are based on 11' lane widths



# CHRISTIANSTED NATIONAL HISTORIC SITE

## Route 5000

### CHURCH STREET

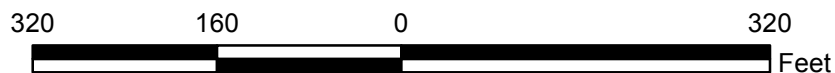
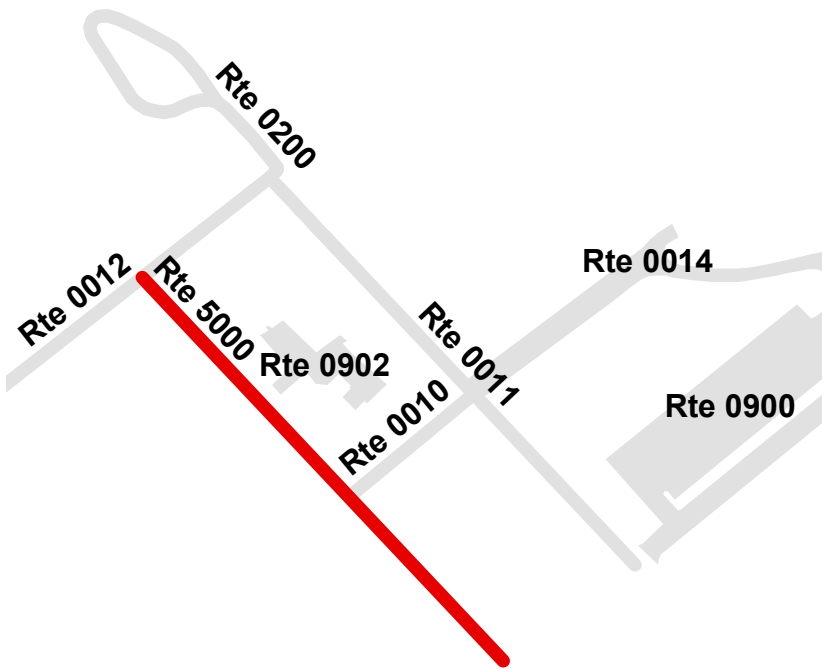
FROM ROUTE 0012 (KING STREET)

TO QUEEN STREET

Route Number	Public / NonPublic	Date Visited	Area (sq ft)	Lane Miles *	Paved Length (mi)	Paved Width (ft)
5000	PUBLIC	5/19/2013	NC	0.29	0.09	35
Culverts	Drop Inlets	Gates	Curb & Gutter	Curb	PCR	Surface Type
NC	NC	NC	N/A	N/A	NC/NC	AS

\* Lane miles are based on 11' lane widths

**NOTE: Because route 5000 is not owned by NPS, features and condition data were not collected.**



**Section 7**  
**Parking Area**  
**Condition Rating Sheets**



Christiansted National Historic Site



**Federal Lands Highway  
Road Inventory Program**

# CHRISTIANSTED NATIONAL HISTORIC SITE

## Route 0900

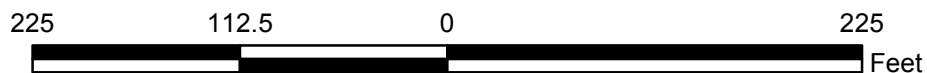
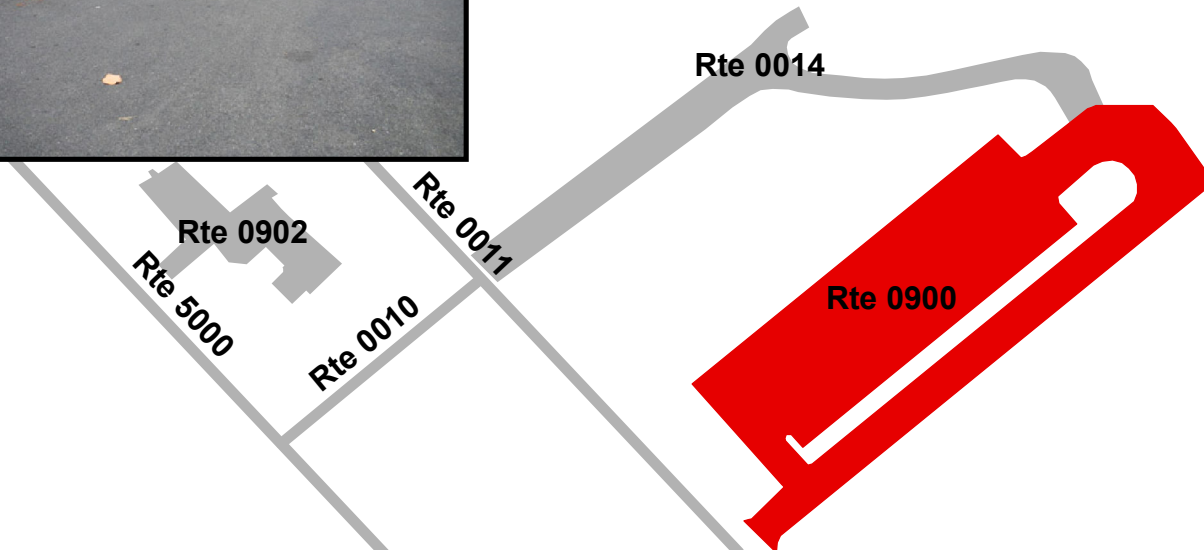
### FORT VISITOR PARKING

FROM ROUTE 0011 (HOSPITAL STREET)

TO ROUTE 0014 (COMPANY STREET EXTENSION)

Route Number	Public / NonPublic	Date Visited	Area (sq ft)	Lane Miles *	Surface Type
0900	PUBLIC	5/18/2013	21,460	0.37	AS
Culverts	Drop Inlets	Gates	Curb & Gutter	Curb	PCR
0	0	4	NO CURB AND GUTTER	CONCRETE CURB	FAIR/73

\* Lane miles are based on 11' lane widths





# CHRISTIANSTED NATIONAL HISTORIC SITE

## Route 0902

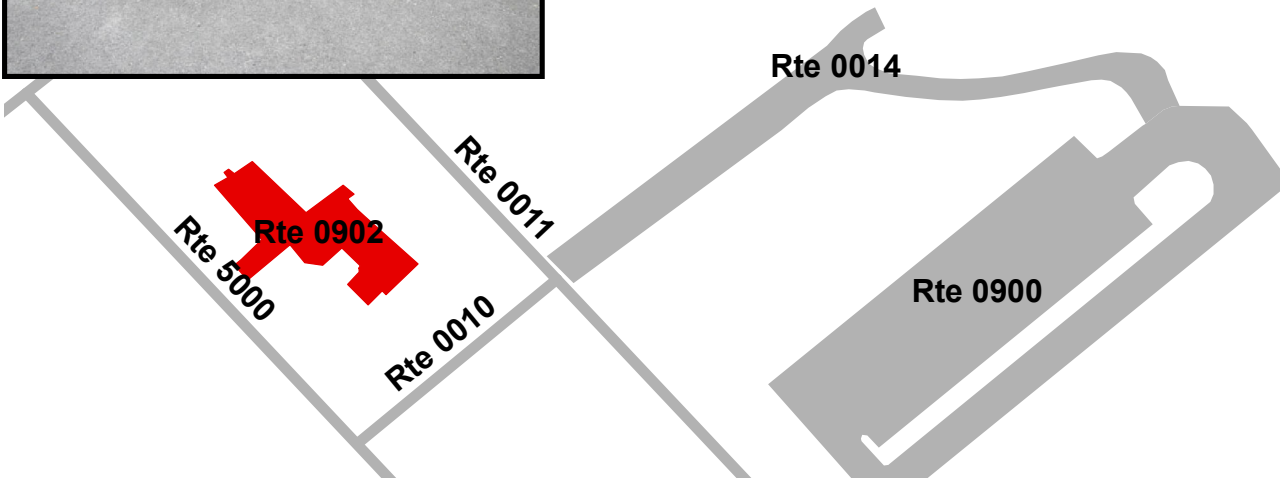
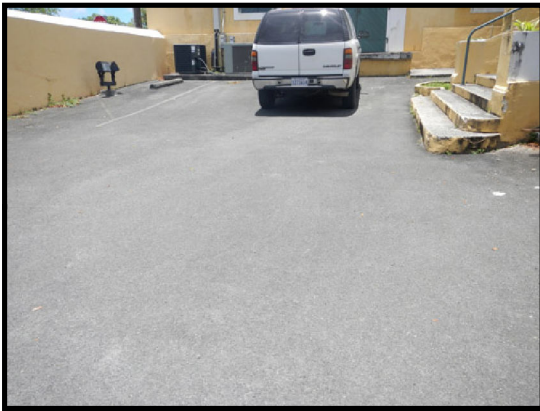
### GUINEA COMPANY WAREHOUSE PARKING

FROM ROUTE 0011 (HOSPITAL STREET)

TO ROUTE 5000 (CHURCH STREET)

Route Number	Public / NonPublic	Date Visited	Area (sq ft)	Lane Miles *	Surface Type
0902	PUBLIC	5/20/2013	3,241	0.06	AS
Culverts	Drop Inlets	Gates	Curb & Gutter	Curb	PCR
0	1	2	NO CURB AND GUTTER	CONCRETE CURB	POOR/45

\* Lane miles are based on 11' lane widths



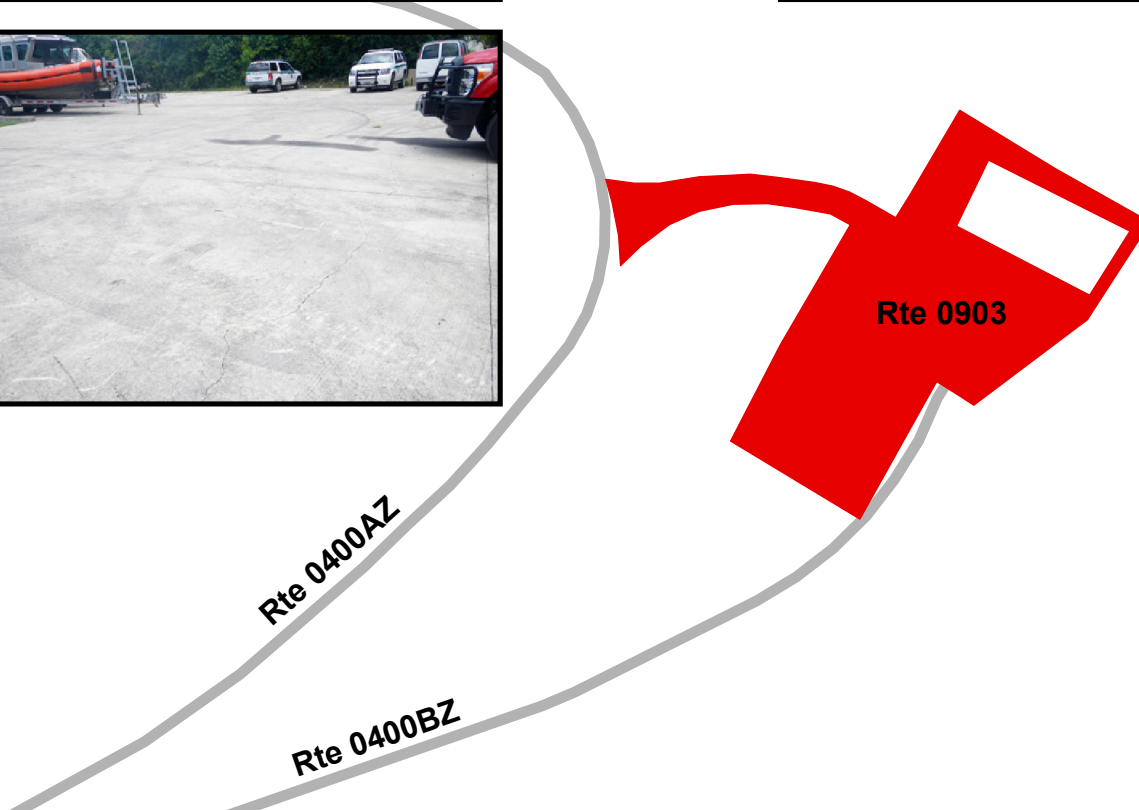
# CHRISTIANSTED NATIONAL HISTORIC SITE

## Route 0903

SION FARM PARKING LOT  
 FROM ROUTE 0400ZZ (SION RIDGE ROADS)  
 TO ROUTE 0400ZZ (SION RIDGE ROADS)

Route Number	Public / NonPublic	Date Visited	Area (sq ft)	Lane Miles *	Surface Type
0903	NONPUBLIC	5/19/2013	13,557	0.23	CO
Culverts	Drop Inlets	Gates	Curb & Gutter	Curb	PCR
0	4	0	NO CURB AND GUTTER	CONCRETE CURB	POOR/45

\* Lane miles are based on 11' lane widths



# Section 8

## Parkwide/Route

### Maintenance Features Summaries



Christiansted National Historic Site



Federal Lands Highway  
Road Inventory Program

**CHRI: PARKWIDE / ROUTE MAINTENANCE FEATURES SUMMARY**

Note: There are no Data Collection Vehicle routes in this park. However, counts were made of the features listed in the table below.

Route Number	Culverts	Drop Inlets	Gates	Curb	Curb & Gutter
0010	0	0	0	CONCRETE CURB	NO CURB AND GUTTER
0011	1	0	0	CONCRETE CURB	NO CURB AND GUTTER
0012	0	0	0	CONCRETE CURB	NO CURB AND GUTTER
0014	0	0	0	NO CURB	NO CURB AND GUTTER
0200	0	0	0	CONCRETE CURB	NO CURB AND GUTTER
0400ZZ	0	0	3	NO CURB	NO CURB AND GUTTER
0900	0	0	4	CONCRETE CURB	NO CURB AND GUTTER
0902	0	1	2	CONCRETE CURB	NO CURB AND GUTTER
0903	0	4	0	CONCRETE CURB	NO CURB AND GUTTER
Totals	1	5	9		

NC = Not Collected

NO = This feature does not exist

**Section 9**  
**Route Maintenance Features**  
**Road Logs**



Christiansted National Historic Site



**Federal Lands Highway  
Road Inventory Program**

# CHRI: ROUTE MAINTENANCE FEATURES ROAD LOG

## ROUTE 0010: COMPANY STREET

<b>FROM MILEPOST</b>	<b>TO MILEPOST</b>	<b>FEATURE</b>	<b>SIDE</b>	<b>COMMENT</b>
0.000	0.000	ROUTE BEGIN	N/A	FROM ROUTE 5000 (CHURCH STREET)
0.000	0.000	INTERSECTION	RIGHT	ROUTE 5000 (CHURCH STREET)
0.000	0.000	SIGN	N/A	GUIDE, CHURCH STREET
0.000	0.000	SIGN	N/A	GUIDE, KIRKE GADE CHURCH ST
0.000	0.000	SIGN	N/A	GUIDE, TSUNAMI EVACUATION ROUTE
0.000	0.018	CURB	LEFT	N/A
0.000	0.000	INTERSECTION	LEFT	ROUTE 5000 (CHURCH STREET)
0.002	0.018	CURB	RIGHT	N/A
0.005	0.005	SIGN	LEFT	REGULATORY, GRAPHIC SIGN NO TEXT
0.005	0.005	SIGN	LEFT	REGULATORY, NO STOPPING OR STANDING
0.015	0.015	SIGN	LEFT	REGULATORY, GRAPHIC SIGN NO TEXT
0.016	0.016	SIGN	LEFT	GUIDE, COMPANY ST.
0.018	0.018	INTERSECTION	LEFT	ROUTE 0011 (HOSPITAL STREET)
0.018	0.018	INTERSECTION	RIGHT	ROUTE 0011 (HOSPITAL STREET)
0.018	0.018	ROUTE END	N/A	TO ROUTE 0011 (HOSPITAL STREET)

# CHRI: ROUTE MAINTENANCE FEATURES ROAD LOG

## ROUTE 0011: HOSPITAL STREET

FROM MILEPOST	TO MILEPOST	FEATURE	SIDE	COMMENT
0.000	0.000	ROUTE BEGIN	N/A	FROM END OF ROUTE 0012 (KING STREET) AND ROUTE 0200 (SCALE HOUSE ACCESS LOOP) ON LEFT
0.000	0.000	SIGN	N/A	REGULATORY, GRAPHIC SIGN NO TEXT
0.000	0.031	PULLOUT	LEFT	N/A
0.000	0.000	INTERSECTION	RIGHT	ROUTE 0012 (KING STREET)
0.000	0.000	INTERSECTION	N/A	ROUTE 0200 (SCALE HOUSE ACCESS LOOP)
0.000	0.000	SIGN	N/A	REGULATORY, NO STANDING ANY TIME
0.005	0.027	CURB	RIGHT	N/A
0.005	0.043	PULLOUT	RIGHT	N/A
0.006	0.045	CURB	LEFT	N/A
0.017	0.017	SIGN	RIGHT	REGULATORY, NO PARKING
0.022	0.022	SIGN	RIGHT	GUIDE, NPS BATHROOM
0.022	0.022	SIGN	LEFT	REGULATORY, NO PARKING ANY TIME
0.026	0.026	SIGN	RIGHT	REGULATORY, GRAPHIC SIGN NO TEXT
0.026	0.026	SIGN	RIGHT	REGULATORY, NO PARKING
0.028	0.028	INTERSECTION	RIGHT	ROUTE 0902 (GUINEA COMPANY WAREHOUSE PARKING)
0.029	0.029	SIGN	RIGHT	GUIDE, DO NOT BLOCK GATE N.P.S
0.029	0.046	CURB	RIGHT	N/A
0.035	0.035	SIGN	RIGHT	REGULATORY, GRAPHIC SIGN NO TEXT
0.035	0.035	SIGN	RIGHT	REGULATORY, NO PARKING
0.042	0.042	SIGN	RIGHT	REGULATORY, NO PARKING
0.042	0.042	SIGN	RIGHT	REGULATORY, GRAPHIC SIGN NO TEXT
0.043	0.043	SIGN	RIGHT	REGULATORY, STOP
0.043	0.043	SIGN	RIGHT	REGULATORY, DO NOT ENTER
0.044	0.044	SIGN	LEFT	REGULATORY, DO NOT ENTER
0.044	0.044	SIGN	LEFT	WARNING, AHEAD
0.044	0.044	SIGN	LEFT	WARNING, GRAPHIC SIGN NO TEXT
0.045	0.045	SIGN	RIGHT	GUIDE, HOSPITAL STREET
0.046	0.051	GUARD/GUIDE WALL	LEFT	N/A
0.048	0.048	INTERSECTION	RIGHT	ROUTE 0010 (COMPANY STREET)

# CHRI: ROUTE MAINTENANCE FEATURES ROAD LOG

## ROUTE 0011: HOSPITAL STREET

FROM MILEPOST	TO MILEPOST	FEATURE	SIDE	COMMENT
0.048	0.048	INTERSECTION	LEFT	ROUTE 0014 (COMPANY STREET EXTENSION)
0.050	0.053	CURB	LEFT	N/A
0.050	0.053	CURB	RIGHT	N/A
0.051	0.051	SIGN	RIGHT	GUIDE, CHRISTIANSTED NATIONAL HISTORIC SITE STEEPLE BUILDING MUSEUM
0.052	0.052	SIGN	RIGHT	REGULATORY, ONE WAY
0.052	0.052	SIGN	RIGHT	REGULATORY, YIELD HERE TO
0.052	0.066	PAVED DITCH	RIGHT	N/A
0.062	0.062	CULVERT	N/A	N/A
0.064	0.064	SIGN	RIGHT	GUIDE, GRAPHIC SIGN NO TEXT
0.064	0.064	SIGN	RIGHT	GUIDE, ST. CROIX HERITAGE TRAIL
0.064	0.064	SIGN	RIGHT	GUIDE, AIRPORT TO TOWNS
0.075	0.075	SIGN	RIGHT	GUIDE, NO PARKING ON THIS STREET
0.078	0.078	SIGN	LEFT	GUIDE, NO PARKING ON THIS STREET
0.085	0.085	INTERSECTION	LEFT	ROUTE 0900 (FORT VISITOR PARKING)
0.085	0.085	INTERSECTION	N/A	PAVED ROUTE (VI ROUTE 75 / HOSPITAL STREET / NON NPS)
0.085	0.085	INTERSECTION	RIGHT	PAVED ROUTE (QUEEN STREET / NON NPS)
0.085	0.085	ROUTE END	N/A	TO QUEEN STREET ON RIGHT AND ROUTE 0900 (FORT VISITOR PARKING) ON LEFT



# CHRI: ROUTE MAINTENANCE FEATURES ROAD LOG

## ROUTE 0012: KING STREET

FROM MILEPOST	TO MILEPOST	FEATURE	SIDE	COMMENT
0.000	0.000	ROUTE BEGIN	N/A	FROM QUEEN CROSS STREET
0.000	0.093	ONE-WAY	N/A	N/A
0.000	0.000	SIGN	RIGHT	REGULATORY, ONE WAY
0.000	0.000	SIGN	RIGHT	GUIDE, TOW AWAY ZONE
0.000	0.000	INTERSECTION	N/A	PAVED ROUTE (VI ROUTE 75 / KING STREET / NON NPS)
0.000	0.000	INTERSECTION	LEFT	PAVED ROUTE (QUEEN'S CROSS STREET / NON NPS)
0.000	0.000	INTERSECTION	RIGHT	PAVED ROUTE (QUEEN'S CROSS STREET / NON NPS)
0.001	0.011	PAVED DITCH	RIGHT	N/A
0.001	0.032	PAVED DITCH	LEFT	N/A
0.002	0.002	SIGN	LEFT	GUIDE, DRONNINGENS TVAER GADE QUEEN CROSS STREET
0.003	0.003	SIGN	LEFT	GUIDE, ST. CROIX HERITAGE TRAIL
0.003	0.003	SIGN	LEFT	REGULATORY, NO PARKING ANY TIME
0.003	0.003	SIGN	LEFT	GUIDE, GRAPHIC SIGN NOT TEXT
0.006	0.006	SIGN	LEFT	GUIDE, TAXI STAND
0.011	0.021	PAVED DITCH	RIGHT	N/A
0.018	0.018	SIGN	LEFT	GUIDE, TAXI STAND
0.021	0.051	PAVED DITCH	RIGHT	N/A
0.027	0.027	SIGN	LEFT	GUIDE, TAXI STAND
0.033	0.033	SIGN	RIGHT	REGULATORY, NO PARKING
0.033	0.033	SIGN	RIGHT	REGULATORY, TOW-AWAY ZONE
0.033	0.033	INTERSECTION	LEFT	PAVED ROUTE (ALLEY)
0.035	0.072	PAVED DITCH	LEFT	N/A
0.035	0.035	SIGN	LEFT	REGULATORY, ONE WAY
0.037	0.037	SIGN	LEFT	GUIDE, TAXI STAND
0.047	0.047	SIGN	LEFT	GUIDE, TAXI STAND
0.049	0.049	INTERSECTION	LEFT	PAVED ROUTE (KING'S ALLEY)
0.054	0.054	SIGN	LEFT	REGULATORY, NO PARKING
0.055	0.062	PAVED DITCH	RIGHT	N/A
0.058	0.058	SIGN	LEFT	GUIDE, TAXI STAND
0.064	0.064	SIGN	RIGHT	REGULATORY, NO PARKING ANY TIME

# CHRI: ROUTE MAINTENANCE FEATURES ROAD LOG

## ROUTE 0012: KING STREET

<b>FROM MILEPOST</b>	<b>TO MILEPOST</b>	<b>FEATURE</b>	<b>SIDE</b>	<b>COMMENT</b>
0.070	0.075	PAVED DITCH	RIGHT	N/A
0.071	0.071	SIGN	LEFT	GUIDE, TAXI STAND
0.072	0.072	SIGN	LEFT	WARNING, GRAPHIC SIGN NO TEXT
0.074	0.074	INTERSECTION	LEFT	UNPAVED ROUTE (ALLEY)
0.075	0.082	CURB	LEFT	N/A
0.076	0.076	SIGN	LEFT	REGULATORY, NO PARKING ANY TIME
0.080	0.080	INTERSECTION	RIGHT	ROUTE 5000 (CHURCH STREET)
0.082	0.093	CURB	RIGHT	N/A
0.084	0.084	SIGN	RIGHT	GUIDE, NATIONAL PARK SERVICE
0.090	0.093	CURB	LEFT	N/A
0.091	0.091	SIGN	LEFT	GUIDE, VI TRAN BUS STOP
0.091	0.091	SIGN	LEFT	REGULATORY, YIELD HERE TO
0.093	0.093	INTERSECTION	N/A	ROUTE 0200 (SCALE HOUSE ACCESS LOOP)
0.093	0.093	INTERSECTION	RIGHT	ROUTE 0011 (HOSPITAL STREET)
0.093	0.093	ROUTE END	N/A	TO BEGINNING OF ROUTE 0011 (HOSPITAL STREET) AND ROUTE 0200 (SCALE HOUSE ACCESS LOOP) ON LEFT

# CHRI: ROUTE MAINTENANCE FEATURES ROAD LOG

## ROUTE 0200: SCALE HOUSE ACCESS LOOP

FROM MILEPOST	TO MILEPOST	FEATURE	SIDE	COMMENT
0.000	0.000	ROUTE BEGIN	N/A	FROM ROUTE 0011 (HOSPITAL STREET) ON RIGHT AND ROUTE 0012 (KING STREET)
0.000	0.000	INTERSECTION	RIGHT	ROUTE 0011 (HOSPITAL STREET)
0.000	0.000	INTERSECTION	N/A	ROUTE 0012 (KING STREET)
0.000	0.072	ONE-WAY	N/A	N/A
0.002	0.003	GUARD/GUIDE WALL	RIGHT	N/A
0.003	0.017	GUARD/GUIDE WALL	RIGHT	N/A
0.004	0.015	CURB	LEFT	N/A
0.017	0.017	SIGN	LEFT	GUIDE, NO PARKING IN THIS AREA
0.019	0.019	INTERSECTION	RIGHT	ROUTE 0200 (SCALE HOUSE ACCESS LOOP)
0.020	0.070	CURB	RIGHT	N/A
0.023	0.030	GUARD/GUIDE WALL	LEFT	N/A
0.030	0.040	CURB	LEFT	N/A
0.030	0.048	PAVED DITCH	LEFT	N/A
0.048	0.064	GUARD/GUIDE WALL	LEFT	N/A
0.049	0.049	SIGN	LEFT	REGULATORY, NO PARKING ANY TIME
0.057	0.057	SIGN	LEFT	REGULATORY, NO PARKING ANY TIME
0.072	0.072	INTERSECTION	LEFT	ROUTE 0200 (SCALE HOUSE ACCESS LOOP)
0.072	0.072	INTERSECTION	N/A	ROUTE 0200 (SCALE HOUSE ACCESS LOOP)
0.072	0.072	ROUTE END	N/A	TO END OF LOOP

# CHRI: ROUTE MAINTENANCE FEATURES ROAD LOG

## ROUTE 0400AZ: SION RIDGE ROAD

FROM MILEPOST	TO MILEPOST	FEATURE	SIDE	COMMENT
0.000	0.000	ROUTE BEGIN	N/A	FROM PARK BOUNDARY
0.000	0.000	INTERSECTION	N/A	PAVED ROUTE (WILD THYME ST / NON NPS)
0.004	0.004	SIGN	LEFT	REGULATORY, U.S. PROPERTY NO TRESPASSING
0.004	0.004	SIGN	RIGHT	REGULATORY, U.S. PROPERTY NO TRESPASSING
0.005	0.005	GATE	N/A	N/A
0.005	0.005	SIGN	N/A	REGULATORY, WARNING MOVING GATE CAN CAUSE SERIOUS INJURY OR DEATH
0.005	0.005	SIGN	N/A	REGULATORY, WARNING MOVING GATE CAN CAUSE SERIOUS INJURY OR DEATH
0.010	0.010	INTERSECTION	RIGHT	ROUTE 0400BZ (SION FARM ROAD)
0.013	0.013	SIGN	LEFT	REGULATORY, U.S. PROPERTY NO TRESPASSING
0.013	0.013	SIGN	LEFT	GUIDE, NATIONAL PARK SERVICE SION RIDGE RESIDENCE AREA
0.112	0.112	INTERSECTION	RIGHT	ROUTE 0903 (SION FARM PARKING LOT)
0.171	0.171	INTERSECTION	N/A	DEAD END
0.171	0.171	ROUTE END	N/A	TO DEAD END

# CHRI: ROUTE MAINTENANCE FEATURES ROAD LOG

## ROUTE 0400BZ: SION FARM ROAD

<b>FROM MILEPOST</b>	<b>TO MILEPOST</b>	<b>FEATURE</b>	<b>SIDE</b>	<b>COMMENT</b>
0.000	0.000	ROUTE BEGIN	N/A	FROM ROUTE 0903 (SION FARM PARKING LOT)
0.000	0.000	INTERSECTION	N/A	ROUTE ROUTE 0903 (SION FARM PARKING LOT)
0.106	0.106	GATE	N/A	N/A
0.117	0.117	INTERSECTION	N/A	ROUTE 0400AZ (SION FARM ROAD)
0.117	0.117	INTERSECTION	RIGHT	ROUTE 0400AZ (SION FARM ROAD)
0.117	0.117	ROUTE END	N/A	TO ROUTE 0400AZ (SION RIDGE ROAD)

# Section 10 Appendix



Christiansted National Historic Site



Federal Lands Highway  
Road Inventory Program

## GLOSSARY OF TERMS AND ABBREVIATIONS

<u>TERM OR ABBREVIATION</u>	<u>DESCRIPTION OR DEFINITION</u>
DCV	Data Collection Vehicle
Excellent	Excellent rating with an index value of 97
Fair	Fair rating with an index value from 73
Func. Class	Functional Classification (see Route ID, Section 2)
Good	Good rating with an index value of 90
MRR	Manually Rated Route
MRL	Manually Rated Line
MRP	Manually Rated Polygon
N/A	Not Applicable
NC	Not Collected
PCR	Pavement Condition Rating
PKG	Parking Area
Poor	Poor rating with an index value of 45
RIP	Road Inventory Program

### **GPS on Manually Rated Roads (MRR)**

Parking areas, some roads, and other paved areas that are not fully drivable with the Data Collection Vehicle are collected manually by field technicians. GPS is collected for these routes using portable Trimble GPS backpack units. Paved campground pads and driveways are not typically included in the inventory or GPS.



## Geodatabase – Background and Metadata

---

In addition to this park report, a *geodatabase* containing both tabular and spatial data specific to this park has been provided. All data disseminated in the preceding report has been obtained from the tables and fields within said geodatabase. The geodatabase can be referenced for tabular data via Microsoft Access or for both tabular and spatial data via ESRI's ArcGIS Suite of software which consists of; ArcMap, ArcCatalog and ArcExplorer. Consolidating the RIP data into one database creates a seamless relationship of tabular and geographic data. It will allow RIP to facilitate easier updates and enhancements in the future.

A geodatabase can be thought of as simply a database containing spatial data. Many different tables are contained within the park's geodatabase. A complete and thorough description of the tables and fields contained within this geodatabase can be found in the *metadata*. The metadata is attached directly within the geodatabase and can be accessed via ESRI's ArcCatalog. The metadata portion of the geodatabase also includes data dictionary report functionality that formats the metadata into an easy to read report.