



# Federal Lands Highway Road Inventory Program

## Road Inventory and Condition Assessment



## Glacier Bay National Park & Preserve GLBA – 9815

## Cycle 5 Report

**Prepared By: Federal Highway Administration  
Road Inventory Program (RIP)  
Data Collection Date: 06/2010  
Report Date: 08/2011**

# Glacier Bay National Park and Preserve in Alaska





## TABLE OF CONTENTS

	<b><u>SECTION</u></b>	<b><u>PAGE</u></b>
1.	<b>INTRODUCTION</b>	<b>1 - 1</b>
2.	<b>PARK ROUTE INVENTORY</b> Route Identification Report	<b>2 - 1</b>
3.	<b>PARK SUMMARY INFORMATION</b>	<b>3 - 1</b>
4.	<b>PARK ROUTE LOCATION MAPS</b> Route Location Key Map Area Map 1 Area Map 2	<b>4 - 1</b> <b>4 - 2</b> <b>4 - 3</b>
5.	<b>PAVED ROUTE CONDITION RATING SHEETS (CRS)</b>	<b>5 - 1</b>
6.	<b>MANUALLY RATED ROUTE CONDITION RATING SHEETS (MRR)</b> MRR Pages	<b>6 - 1</b>
7.	<b>PARKING AREA CONDITION RATING SHEETS</b> Parking Area Pages	<b>7 - 1</b>
8.	<b>PARKWIDE / ROUTE MAINTENANCE FEATURES SUMMARIES</b>	<b>8 - 1</b>
9.	<b>ROUTE MAINTENANCE FEATURES ROAD LOGS</b>	<b>9 - 1</b>
10.	<b>APPENDIX</b> Glossary of Terms and Abbreviations GPS on Manually Rated Routes Geodatabase Background and Metadata	<b>10 - 1</b> <b>10 - 2</b> <b>10 - 3</b>

# Section 1 Introduction



## Glacier Bay National Park & Preserve



Federal Lands Highway  
Road Inventory Program

## INTRODUCTION

The Federal Highway Administration, (FHWA), in the mid 1970s, was charged with the task of identifying surface condition deficiencies and corrective priorities on National Park Service (NPS) roads and parkways. Additionally, FHWA was tasked with establishing an integrated maintenance features inventory, locating features such as culverts, guardrails, and signs, among others, along NPS roads and parkways. As a result, in 1976 the NPS and FHWA entered into an MOA (Memorandum Of Agreement) which established the RIP (Road Inventory Program). This MOA was terminated and revised in 1980 to establish a new MOA aiming to update RIP data and develop a long-range program to improve and maintain NPS roads to designated condition standards and establish a maintenance management program.

The FHWA completed this initial phase of the RIP in the early 1980s. As a result of this effort, each NPS site included in the study received a RIP Report known as the “Brown Book” which included the information collected during this first RIP phase.

In the 1990s, the effort was again renewed to update and maintain the RIP data. By this time the computer age was upon us and a process was employed that relied heavily on electronic data collection and computer technology. A cyclical program was developed and the RIP completed two cycles of data collection from 1994 to 2001. Cycle 1, starting in 1994, was conducted in 44 “large parks” (parks containing 10 or more paved route miles). Cycle 2 began in 1997 and comprised 79 large parks and 5 small parks totaling 4,874 paved route miles. Each of these parks received a RIP Report known as the “Blue Book”. Cycle 3, from 2001 to 2004, was conducted in all parks, large and small, that contained any paved routes, including parking areas and, again, each park received a RIP Report and associated electronic files.

Cycle 4 was initiated in the spring of 2006 covering 86 large parks and several associated small parks consisting of 5,553 paved route miles and 6,232 paved parking areas. Cycle 4, at the time of this writing in November 2010, has completed data collection and is nearing completion with the delivery of all data to the NPS.

In 2005, the FHWA began implementing the use of a Pavement Management System (PMS) to assist the NPS in prioritizing Pavement Maintenance and Rehabilitation activities. The PMS used by FHWA is the Highway Pavement Management Application (HPMA) and this software has the ability to store inventory and condition data from RIP and forecast future performance using prediction models. Outputs include performance and condition reports at the National, Regional, Park, or Route level. A regional prioritized list and optimization have been produced for most regions and the Federal Highway Deferred Maintenance is calculated via the HPMA.

In an effort to improve the accuracy of treatment recommendations and pavement condition descriptions, an extensive study was completed throughout 2010 that has resulted in changes to the RIP condition reporting method, specifically the distresses and indexes that comprise the

Pavement Condition Rating (PCR). It was determined that a better representation of PCR could be achieved by modifying the relative impact certain distresses would have on the overall rating. The changes that were implemented were endorsed by management at both the FHWA and NPS in October 2010. These changes will allow greater use of RIP and HPMA data for not simply condition data reporting, but also as a reliable tool for project identification and selection. Because of these changes, the PCR Condition ratings reported in Cycle 5 do not directly relate to the condition ratings reported in previous cycle RIP Reports. For more detailed information about the changes, see Section 3 and Section 10 in this RIP Report.

Cycle 5 has launched in the summer of 2010 and will again comprise all parks, large and small, that are served by paved roads and/or parking areas. For Cycle 5, the decision was made to collect condition data in large parks on Functional Class 1, 2, and 7 paved routes only, as well as any new routes that were previously not collected. In small parks, all paved routes and parking areas will be collected. As a result, this will include 81 large parks with 4,459 paved route miles and 168 small parks with 529 paved route miles and associated paved parking areas.

Since 1984, the Road Inventory Program has been funded through the Federal Lands Highway Park Roads and Parkways (PRP) Program. Currently, coordination of the RIP with FLH is under the NPS Washington Headquarters Park Facility Management Division. The FLH Washington office coordinates policy and prepares national reports and needs assessment studies for Congress.

In 1998, the Transportation Equity Act for the 21<sup>st</sup> Century (TEA-21) amended Title 23 U.S.C., and inserted Section 204(a)(6) requiring the FHWA and NPS, to develop by rule, a Pavement Management System (PMS) applied to park roads and parkways serving the National Park System.

FLH is responsible for the accuracy of all data presented in this report. Any questions or comments concerning the contents of this report should be directed to the national RIP Coordinator located in Sterling, Virginia.

Respectfully,

FHWA RIP Team

FHWA/Eastern Federal Lands  
21400 Ridgetop Circle  
Sterling, VA 20166  
(703) 404-6371

FHWA/Central Federal Lands  
12300 West Dakota Ave  
Lakewood, CO 80228  
(720) 963-3560

# Section 2 Park Route Inventory



## Glacier Bay National Park & Preserve



Federal Lands Highway  
Road Inventory Program

# Cycle 5 NPS/RIP Route ID Report

Road Inventory Program 08/03/2011

(Numerical By Route #)

Page 1 of 4

Shading Color Key:

Red text denotes approx. mileage

White = Paved Routes, DCV Driven

Yellow = Unpaved Routes, DCV not Driven

Blue = All Paved Parking Areas

Green = All Unpaved Parking Areas

Grey = Paved Routes, DCV not Driven

Black = State, Local or Private non-NPS Routes

█ = Concession Route Flag ON

\*Unpaved route data was obtained from NPS and was not inventoried by the Road Inventory Program (RIP).

\*\* DCV - Data Collection Vehicle

NC - Not Collected

## GLBA

### GLACIER BAY NATIONAL PARK AND PRESERVE

Rte. No.	Cycle Collected	FMSS No.	Concess Route	Route Name	Route Description From To	Maint. District	Paved Miles	Un-Paved Miles	Total Route Length	Func. Class	Manual Rated SQ/FT	Surf. Type	Area Maps
0010	5	42539		PARK ROAD	FROM PARK BOUNDARY TO ROUTE 0900 (PUBLIC DOCK PARKING)	N/A	4.40	0.00	4.40	1	697,118	AS	1
0400	5	73528		PERMANENT QUARTERS ROAD (SERVICE ROAD E)	FROM ROUTE 0010 (PARK ROAD) ON RIGHT AT MP 4.10 TO DEAD END	N/A	0.00	0.24	0.24	5	19,853	GR	1
0401	5	73522		MAINTENANCE FACILITY ACCESS ROAD (SERVICE ROAD B)	FROM ROUTE 0010 (PARK ROAD) ON LEFT AT MP 3.45 TO ROUTE 0916 (MAINTENANCE PARKING LOT)	N/A	0.07	0.00	0.07	5	7,983	AS	1
0403	5	93117		BEACHFRONT SERVICE ROAD	FROM ROUTE 0400 (PERMANENT QUARTERS ROAD (SERVICE ROAD E)) TO ROUTE 0900 (PUBLIC DOCK PARKING)	N/A	0.00	0.26	0.26	6	15,275	GR	1
0404	5	101380		HEADQUARTERS ACCESS ROAD	FROM ROUTE 0010 (PARK ROAD) ON RIGHT AT MP 3.84 TO ROUTE 0912 (HEADQUARTERS PARKING AREA)	N/A	0.00	0.00	0.00	5	17,471	GR	1
0405	NC	78136		INDIAN POINT ROAD	FROM PARK BOUNDARY TO INDIAN COVE DRIVE	N/A	0.00	0.30	0.30	5	0	GR	
0406	5	101504		SEASONAL QUARTERS ACCESS ROAD (SERVICE ROAD D)	FROM ROUTE 0010 (PARK ROAD) ON RIGHT AT MP 3.94 TO PARKING	N/A	0.00	0.00	0.00	5	22,721	GR	1
0407	5	101391		WATER TREATMENT PLANT ACCESS ROAD (SERVICE ROAD C)	FROM ROUTE 0010 (PARK ROAD) ON LEFT AT MP 3.86 TO PARKING	N/A	0.00	0.00	0.00	6	5,885	GR	1
0900	5	74091		PUBLIC DOCK PARKING	FROM END OF ROUTE 0010 (PARK ROAD) TO END OF ROUTE 0403 (BEACHFRONT SERVICE ROAD)	N/A	0.00	0.00	0.00		21,308	AS	1
0904	5	74106		UTILITY COMPLEX PARKING AREA	FROM ROUTE 0010 (PARK ROAD) ON LEFT AT MP 4.37 TO PARKING	N/A	0.00	0.00	0.00		21,696	AS	1
0906	5	73529	█	LODGE HOUSING PARKING AREA (SERVICE ROAD F)	FROM ROUTE 0010 (PARK ROAD) ON LEFT AT MP 4.21 TO PARKING	N/A	0.00	0.00	0.00		13,707	GR	1
0907	5	74115	█	LODGE PARKING AREA	FROM ROUTE 0010 (PARK ROAD) ON RIGHT AT MP 4.15 TO PARKING	N/A	0.00	0.00	0.00		19,499	AS	1
0910	5	74125		STORAGE BUILDING PARKING (SERVICE ROAD D)	FROM ROUTE 0406 (SEASONAL QUARTERS ACCESS ROAD (SERVICE ROAD D)) ON RIGHT TO PARKING	N/A	0.00	0.00	0.00		4,256	GR	1



# Cycle 5 NPS/RIP Route ID Report

Road Inventory Program 08/03/2011

(Numerical By Route #)

Page 2 of 4

Shading Color Key:

Red text denotes  
approx. mileage

White = Paved Routes, DCV Driven
Grey = Paved Routes, DCV not Driven

Yellow = Unpaved Routes, DCV not Driven
Black = State, Local or Private non-NPS Routes

Blue = All Paved Parking Areas
■ = Concession Route Flag ON

Green = All Unpaved Parking Areas
-----------------------------------

\*Unpaved route data was obtained from NPS and was not inventoried by the Road Inventory Program (RIP).

\*\* DCV - Data Collection Vehicle      NC - Not Collected

## GLBA

### GLACIER BAY NATIONAL PARK AND PRESERVE

Rte. No.	Cycle Collected	FMSS No.	Concess Route	Route Name	Route Description		Maint. District	Paved Miles	Un-Paved Miles	Total Route Length	Func. Class	Manual Rated SQ/FT	Surf. Type	Area Maps
					From	To								
0912	5	74127		HEADQUARTERS PARKING AREA	FROM END OF ROUTE 0404 (HEADQUARTERS ACCESS ROAD)	TO PARKING	N/A	0.00	0.00	0.00		23,148	GR	1
0913	5	61190		BARTLETT RIVER TRAILHEAD PARKING	ADJACENT TO ROUTE 0010 (PARK ROAD) ON RIGHT AT MP 3.67		N/A	0.00	0.00	0.00		3,068	AS	1
0914	5	74140		WATER TANK ACCESS AND PARKING	FROM ROUTE 0010 (PARK ROAD) ON RIGHT AT MP 3.53	TO PARKING	N/A	0.00	0.00	0.00		1,532	AS	1
0915	5	42541		DEPOT PARKING (SERVICE ROAD A)	FROM ROUTE 0010 (PARK ROAD) ON RIGHT AT MP 2.98	TO PARKING	N/A	0.00	0.00	0.00		75,284	GR	1
0916	5	92851		MAINTENANCE PARKING LOT	FROM END OF ROUTE 0401 (MAINTENANCE FACILITY ACCESS ROAD (SERVICE ROAD B))	TO PARKING	N/A	0.00	0.00	0.00		109,290	GR	1

# Cycle 5 NPS/RIP Route ID Report

Shading Color Key:

Red text denotes approx. mileage

White = Paved Routes, DCV Driven
Grey = Paved Routes, DCV not Driven

Yellow = Unpaved Routes, DCV not Driven
Black = State, Local or Private non-NPS Routes

Blue = All Paved Parking Areas
Red = Concession Route Flag ON

Green = All Unpaved Parking Areas
-----------------------------------

\*Unpaved route data was obtained from NPS and was not inventoried by the Road Inventory Program (RIP).

\*\* DCV - Data Collection Vehicle      NC - Not Collected

## CYCLE 5 SUMMARY TOTALS FOR GLACIER BAY NATIONAL PARK AND PRESERVE

<b>CYCLE 5 ROUTE TOTALS</b>	
DCV Driven Route Miles	0.00
Manually Rated Route Miles	4.47
<b>TOTAL PARK ROUTE MILES COLLECTED IN CYCLE 5</b>	<b>4.47</b>
Manually Rated Routes (SQFT)	786,306
<b>TOTAL UNPAVED PARK ROUTE MILES</b>	<b>0.50</b>

<b>CYCLE 5 CONCESSION TOTALS</b>	
Concession Paved Route Miles	0.00
Concession Unpaved Route Miles	0.00
<b>TOTAL CONCESSION ROUTE MILES</b>	<b>0.00</b>
Concession Paved Parking Area SQFT	19,499
Concession Unpaved Parking Area SQFT	13,707
<b>TOTAL CONCESSION PARKING AREA SQFT</b>	<b>33,206</b>
Concession Manually Rated Rotes SQFT	0

<b>* CYCLE 5 PARKING AREA TOTALS</b>	
Paved Parking (SQFT)	67,103
Unpaved Parking (SQFT)	225,685
<b>TOTAL PARKING (SQFT)</b>	<b>292,788</b>

<b>CYCLE 5 WEIGHTED AVERAGE PARK VALUES</b>	
DCV Driven PCR	N/A
**Manually Rated Routes PCR	90
**Parking PCR	77
<b>***Total Equivalent Lane Miles</b>	<b>18.58</b>

\* - The Parking Area Totals SQFT value represents all parking areas collected in Cycle 5, both park and concessionaire.

\*\* - Parking and Manually Rated Routes are assigned the following PCR values based on their observed condition: Construction=-1, Excellent=97, Good=90, Fair=73, and Poor=45.

\*\*\* - Equivalent Lane Miles are calculated by route using the following equations : DCV and Manually Rated Lines Routes=(PAVE\_WIDTHxPAVED\_MI)/11 foot lane. Parking Areas=SQ\_FEET/5280/11. Manually Rated Polygons=SQ\_FEET/5280/11.

# Cycle 5 NPS/RIP Route ID Report

Shading Color Key:

Red text denotes approx. mileage

White = Paved Routes, DCV Driven

Yellow = Unpaved Routes, DCV not Driven

Blue = All Paved Parking Areas

Green = All Unpaved Parking Areas

Grey = Paved Routes, DCV not Driven

Black = State, Local or Private non-NPS Routes

= Concession Route Flag ON

\*Unpaved route data was obtained from NPS and was not inventoried by the Road Inventory Program (RIP).

\*\* DCV - Data Collection Vehicle      NC - Not Collected

## General Park Road Functional Classification Table

- Class 1** Principal Park Road/Rural Parkway (Public Roads) Roads which constitute the main access route, circulatory tour, or thoroughfare for park visitors. Route Numbers 1 - 99. Note: Rural parkways (e.g. Natchez Trace) are numbered 1 - 9. State Routes Inventoried for Park. Route Numbers 5000-5999
- Class 2** Connector Park Road (Public Roads) - Roads which provide access within a park to areas of scenic, scientific, recreational or cultural interest, such as overlooks, campgrounds, etc. Route Numbers 100-199.
- Class 3** Special Purpose Park Road (Public Roads) - Roads which provide circulation within public areas, such as campgrounds, picnic areas, visitor center complexes, concessionaire facilities, etc. These roads generally serve low-speed traffic and are often designed for one-way circulation. Route Numbers 200-299.
- Class 4** Primitive Park Roads (Public Roads) - Roads which provide circulation through remote areas and/or access to primitive campgrounds and undeveloped areas. These roads frequently have no minimum design standards and their use may be limited to specially equipped vehicles. Route Numbers 200-299. Note: Functional Classes 3 and 4 have the same route numbers because, historically, they were numbered similarly.
- Class 5** Administrative Access Road (Administrative Roads) - All public roads intended for access to administrative developments or structures such as park offices, employee quarters, or utility areas. Route Numbers 400-499.
- Class 6** Restricted Road (Administrative Roads) - All roads normally closed to the public, including patrol roads, truck trails, and other similar roads. Route Numbers 400-499. Note: Functional Classes 5 and 6 have the same route numbers because historically they were numbered similarly and often there is little distinction between these routes. For example, because utility areas and employee housing are often closed to the public, this restriction would result in classification of FC 6 rather than FC 5.
- Class 7** Urban Parkway (Urban Parkways and City Streets) - These facilities serve high volumes of park and non-park related traffic and are restricted, limited-access facilities in an urban area. This category of roads primarily encompasses the major parkways which serve as gateways to our nation's capital. Other major park roads or portions thereof, however, may be included in this category. Route Numbers 1-9.
- Class 8** City Streets (Urban Parkways and City Streets) - City streets are usually extensions of the adjoining street system that are owned and maintained by the National Park Service. The construction and/or reconstruction should conform with accepted local engineering practice and local conditions. Route Numbers 600-699.

\*\*\*\*\*

A park road system contains those roads within or giving access to a park or other unit of the NPS which are administered by the NPS, or by the Service in cooperation with other agencies. The assignment of a functional classification (FC) to a park road is not based on traffic volumes or design speed, but on the intended use or function of that road or route.

The historic route numbering system also included a 300 number series for interpretive roads, and a 500 series for one-way roads. There are approximately 250 roads nationwide which are designated by the 300 and 500 series. The numbers for these roads will be maintained for reporting consistency. However, since these interpretive and one-way routes are not as clearly tied to a specific functional class, the 300 and 500 series will be discontinued for future use.

5000 route numbers are assigned to Non-NPS Routes that are State, County or City owned which border, traverse, or provide access to Park Facilities or Assets. 5000 Routes are driven for GPS and Video Log only.

## Surface Type Abbreviations:

- AS - Asphaltic Concrete Pavement**
- CO - Portland Cement Concrete Pavement**
- BR - Brick or Pavers Road Bed**
- CB - Cobble Stone Road Bed**
- GR - Gravel Road Bed**
- SA - Sand Road Bed**
- NV - Native or Dirt Material Road Bed**
- OT - Other Materials Road Bed**

# Section 3 Park Summary Information



## Glacier Bay National Park & Preserve



Federal Lands Highway  
Road Inventory Program

Note: This park is classified as a Small Park. No DCV routes exist in this park at the time of data collection. Therefore, there is no data to report for this section.

# Section 4 Park Route Location Maps



## Glacier Bay National Park & Preserve

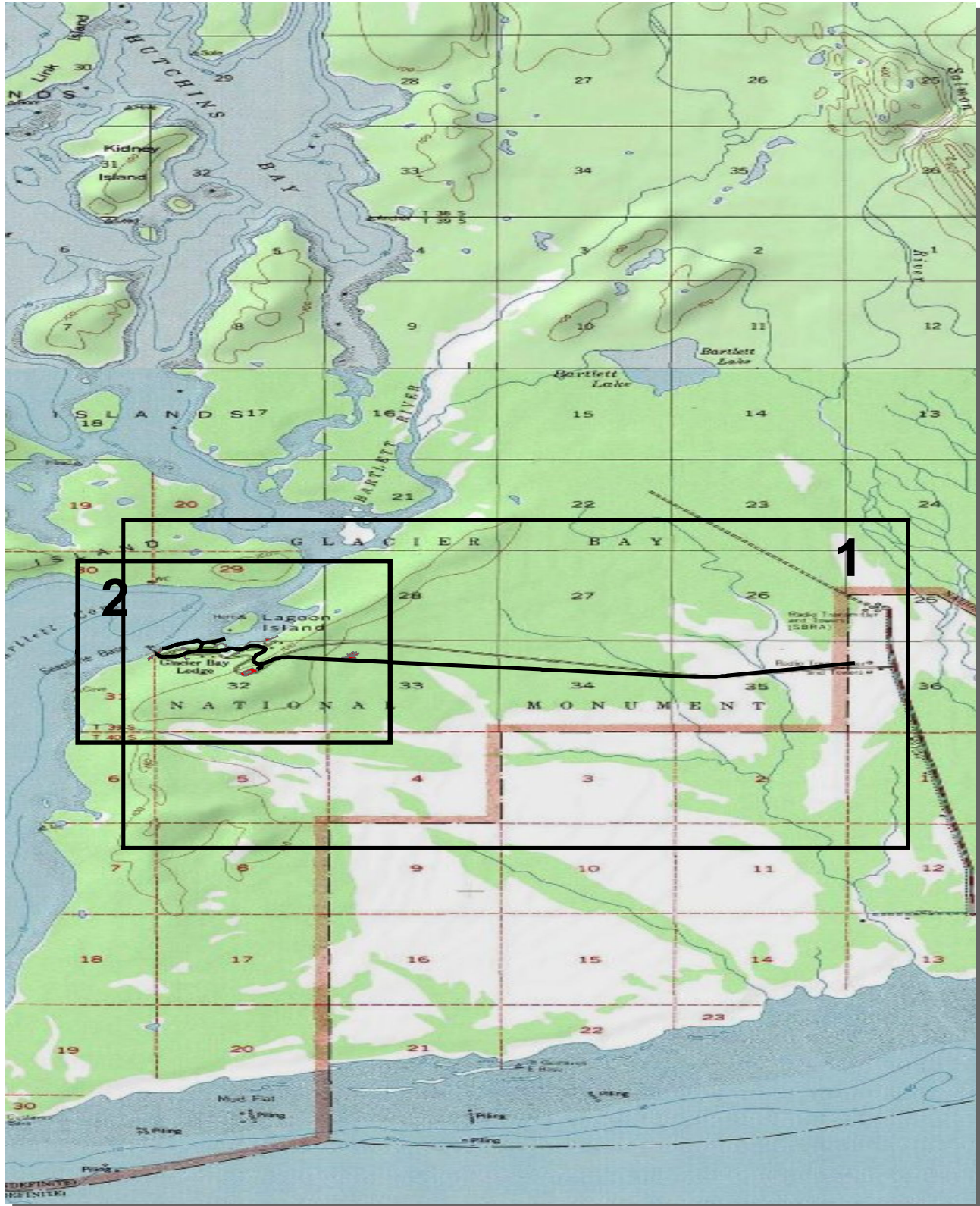


Federal Lands Highway  
Road Inventory Program

# Glacier Bay National Park & Preserve

## Route Location

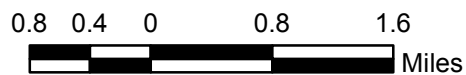
### Key Map



# Glacier Bay National Park & Preserve

## Route Location

### Area Map 1

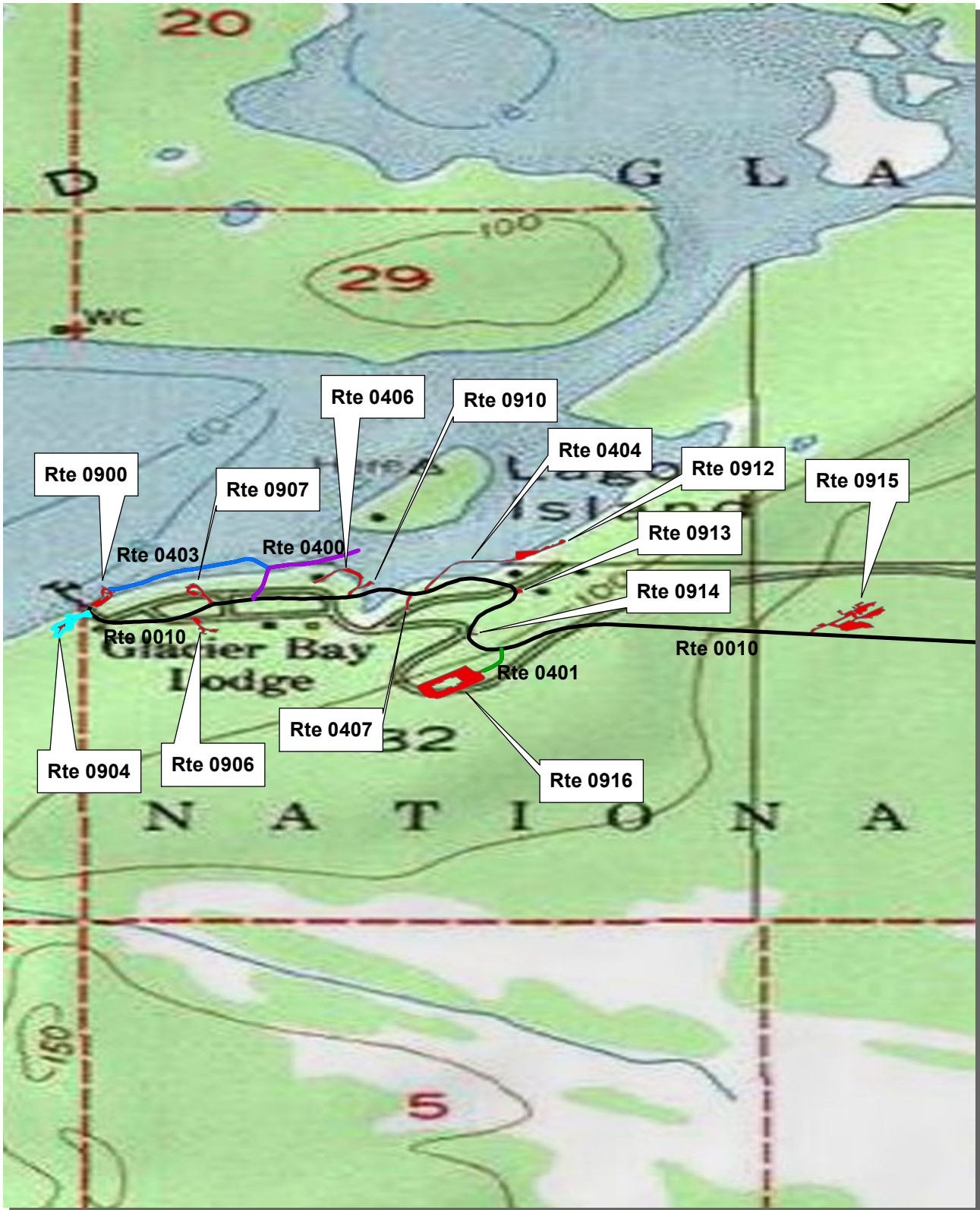




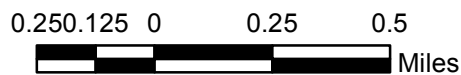
# Glacier Bay National Park & Preserve

## Route Location

### Area Map 2



Unique colors used to differentiate routes



**Section 5**  
**Paved Route**  
**Condition Rating Sheets**



**Glacier Bay**  
**National Park & Preserve**



**Federal Lands Highway**  
**Road Inventory Program**

Note: This park is classified as a Small Park. No DCV routes exist in this park at the time of data collection. Therefore, there is no data to report for this section.

**Section 6**  
**Manually Rated Route**  
**Condition Rating Sheets**



**Glacier Bay**  
**National Park & Preserve**



**Federal Lands Highway**  
**Road Inventory Program**

# GLACIER BAY NATIONAL PARK & PRESERVE

## Route 0010 PARK ROAD

FROM PARK BOUNDARY  
TO ROUTE 0900 (PUBLIC DOCK PARKING)

Route Number	Public / Non Public	Date Visited	Area (sq ft)	Lane Miles **	MRL	
					Length (mi)	Width (ft)
0010	Public	6/28/2010	697118	12.003	4.401	30
Culverts	Drop Inlets	Gates	Curb & Gutter	Curb	PCR	Surface Type
0	0	0	NO CURB AND GUTTER	NO CURB	GOOD/90	AS

\* Lane Miles are based on 11' lane widths



MP 0.00



MP 1.00



MP 2.00



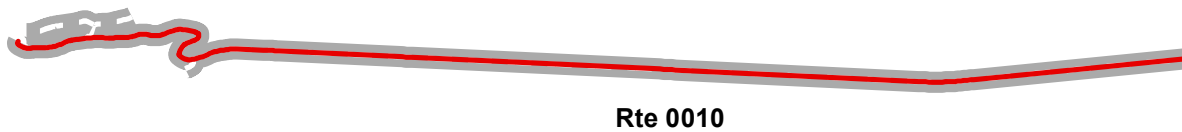
MP 3.00



MP 4.00



MP 4.39



Rte 0010



# GLACIER BAY NATIONAL PARK & PRESERVE

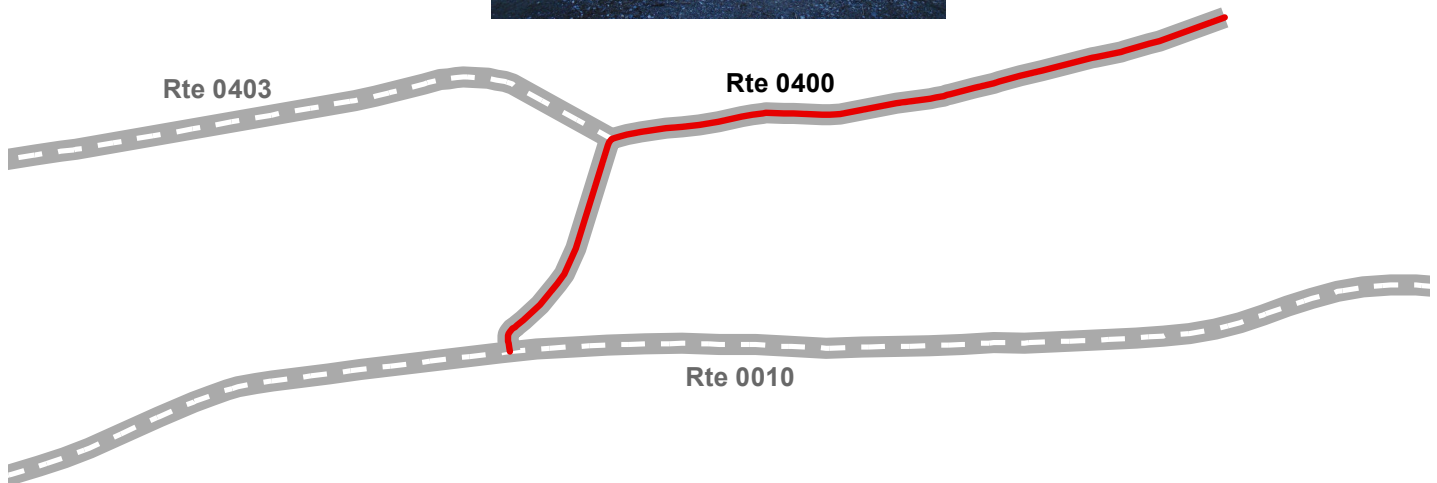
## Route 0400

### PERMANENT QUARTERS ROAD (SERVICE ROAD E)

FROM ROUTE 0010 (PARK ROAD) ON RIGHT AT MP 4.10  
TO DEAD END

Route Number	Public / Non Public	Date Visited	Area (sq ft)	Lane Miles **	MRL	
					Length (mi)	Width (ft)
0400	PUBLIC	6/28/2010	19853	0.342	0.235	16
Culverts	Drop Inlets	Gates	Curb & Gutter	Curb	PCR	Surface Type
0	0	0	NO CURB AND GUTTER	NO CURB	GOOD/90	GR

\* Lane miles are based on 11' lane widths



# GLACIER BAY NATIONAL PARK & PRESERVE

## Route 0401

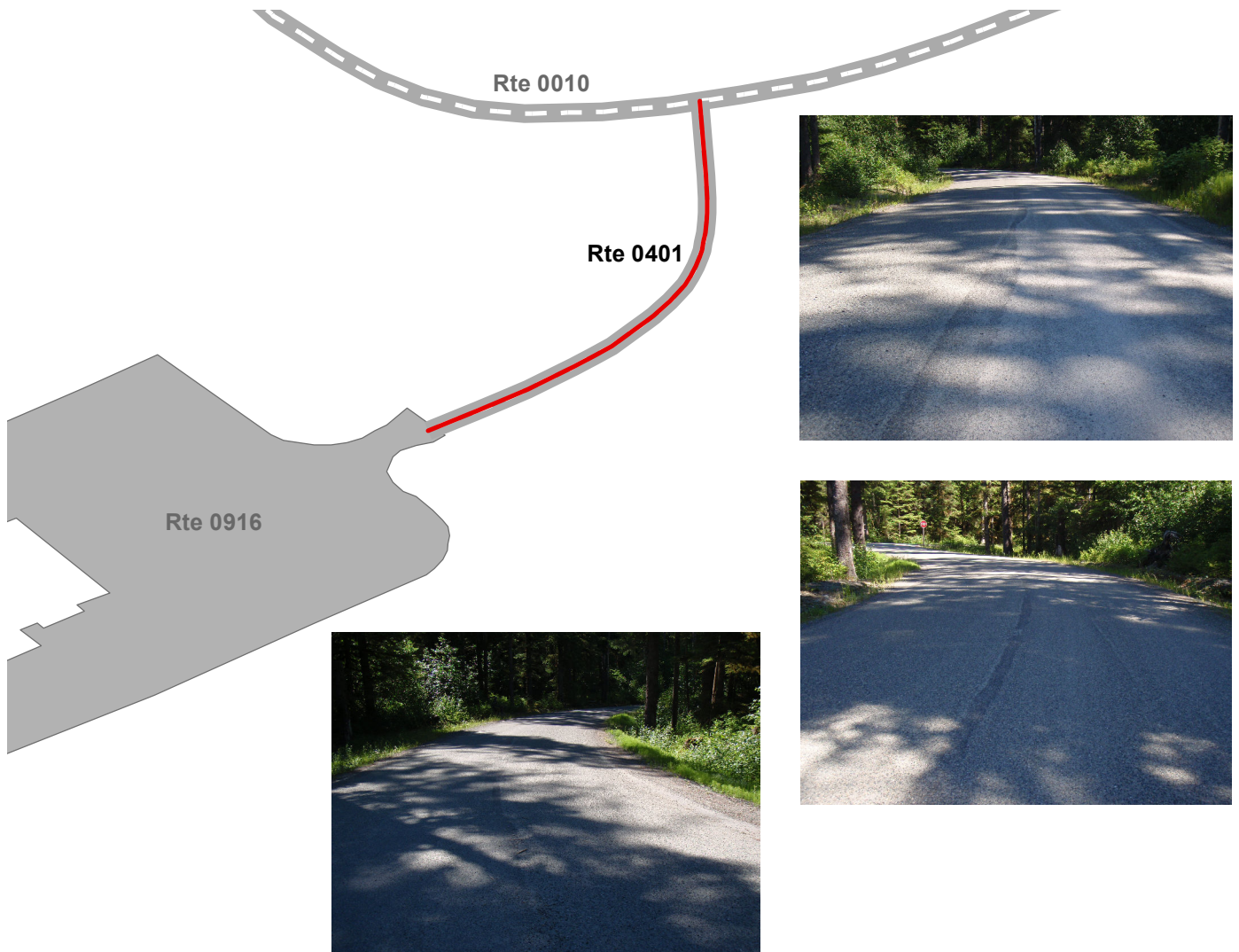
### MAINTENANCE FACILITY ACCESS ROAD (SERVICE ROAD B)

FROM ROUTE 0010 (PARK ROAD) ON LEFT AT MP 3.45

TO ROUTE 0916 (MAINTENANCE PARKING LOT)

Route Number	Public / Non Public	Date Visited	Area (sq ft)	Lane Miles **	MRL	
					Length (mi)	Width (ft)
0401	PUBLIC	6/28/2010	7983	0.137	0.072	21
Culverts	Drop Inlets	Gates	Curb & Gutter	Curb	PCR	Surface Type
0	0	0	NO CURB AND GUTTER	NO CURB	GOOD/90	AS

\* Lane miles are based on 11' lane widths



# GLACIER BAY NATIONAL PARK & PRESERVE

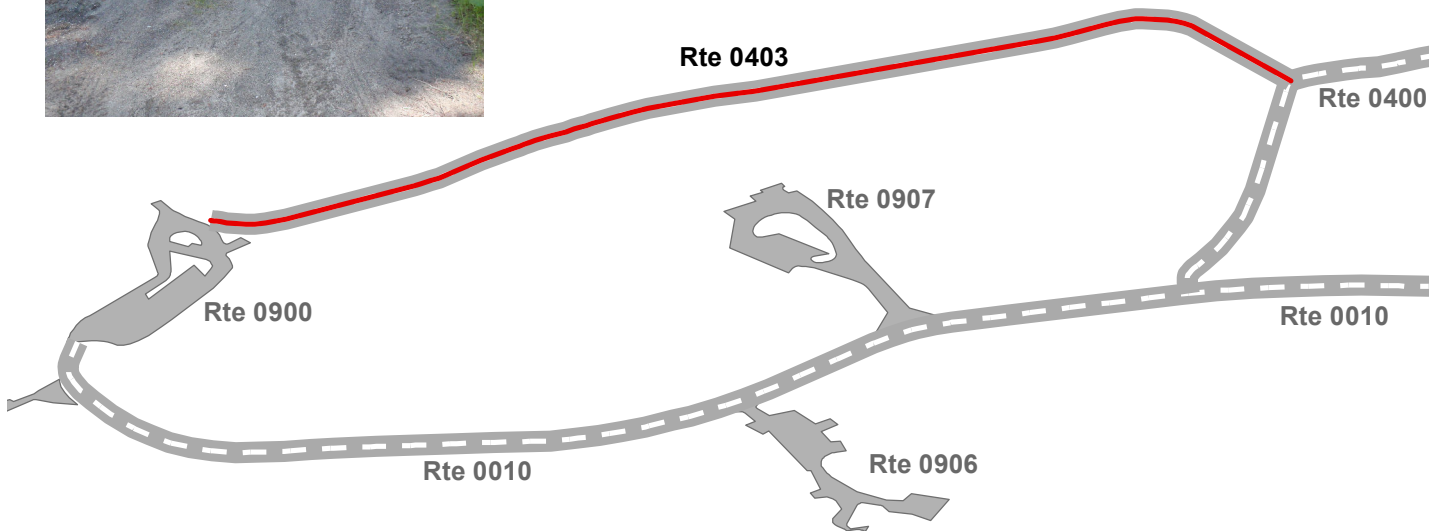
## Route 0403

### BEACHFRONT SERVICE ROAD

FROM ROUTE 0400 (PERMANENT QUARTERS ROAD (SERVICE ROAD E))  
TO ROUTE 0900 (PUBLIC DOCK PARKING)

Route Number	Public / Non Public	Date Visited	Area (sq ft)	Lane Miles **	MRL	
					Length (mi)	Width (ft)
0403	NON PUBLIC	6/28/2010	15275	0.263	0.263	11
Culverts	Drop Inlets	Gates	Curb & Gutter	Curb	PCR	Surface Type
0	0	0	NO CURB AND GUTTER	NO CURB	GOOD/90	GR

\* Lane miles are based on 11' lane widths





# GLACIER BAY NATIONAL PARK & PRESERVE

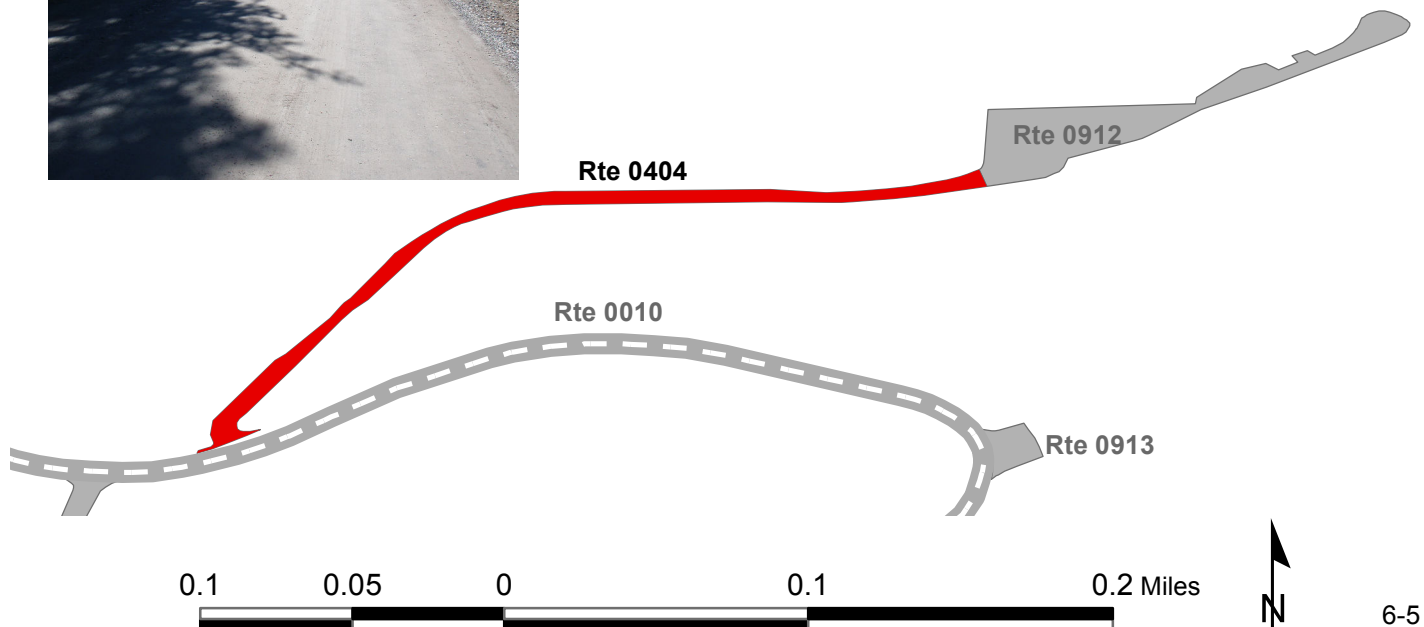
## Route 0404

### HEADQUARTERS ACCESS ROAD

FROM ROUTE 0010 (PARK ROAD) ON RIGHT AT MP 3.84  
TO ROUTE 0912 (HEADQUARTERS PARKING AREA)

Route Number	Public / Non Public	Date Visited	Area (sq ft)	Lane Miles *	Surface Type
0404	Public	6/28/2010	17471	0.301	GR
Culverts	Drop Inlets	Gates	Curb & Gutter	Curb	PCR
0	0	0	NO CURB AND GUTTER	NO CURB	GOOD/90

\* Lane miles are based on 11' lane widths



# GLACIER BAY NATIONAL PARK & PRESERVE

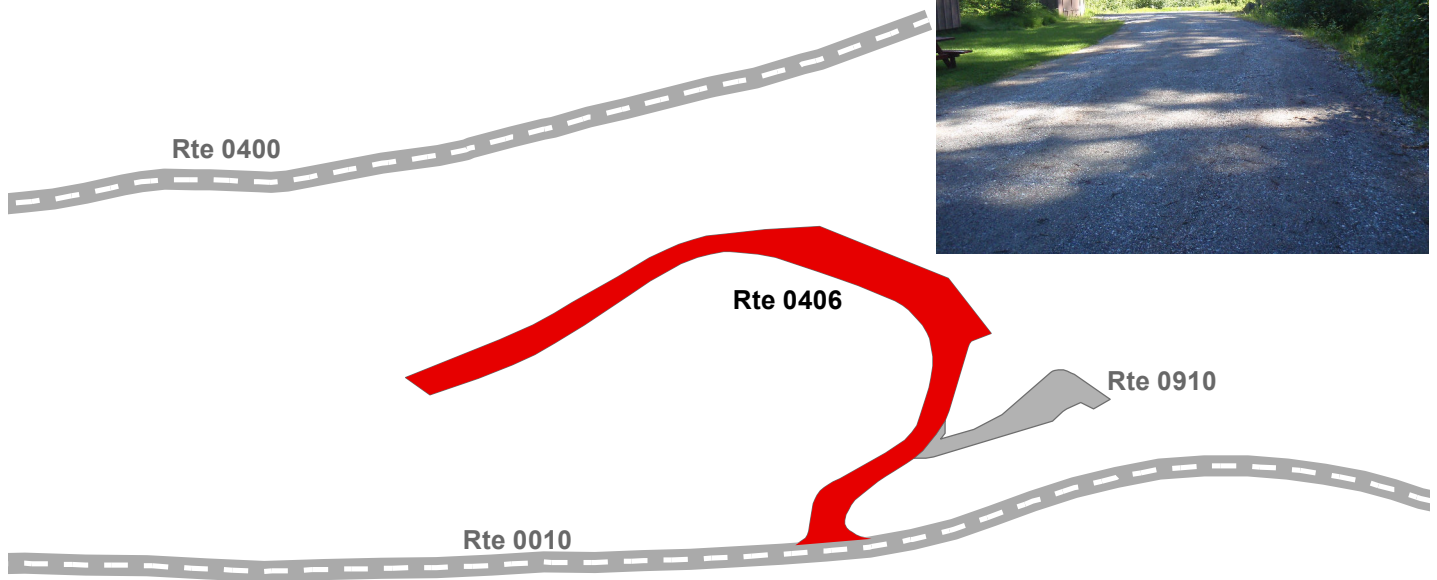
## Route 0406

SEASONAL QUARTERS ACCESS ROAD (SERVICE ROAD D)

FROM ROUTE 0010 (PARK ROAD) ON RIGHT AT MP 3.94  
TO PARKING

Route Number	Public / Non Public	Date Visited	Area (sq ft)	Lane Miles *	Surface Type
0406	Public	6/28/2010	22721	0.391	GR
Culverts	Drop Inlets	Gates	Curb & Gutter	Curb	PCR
1	0	0	NO CURB AND GUTTER	NO CURB	GOOD/90

\* Lane miles are based on 11' lane widths



# GLACIER BAY NATIONAL PARK & PRESERVE

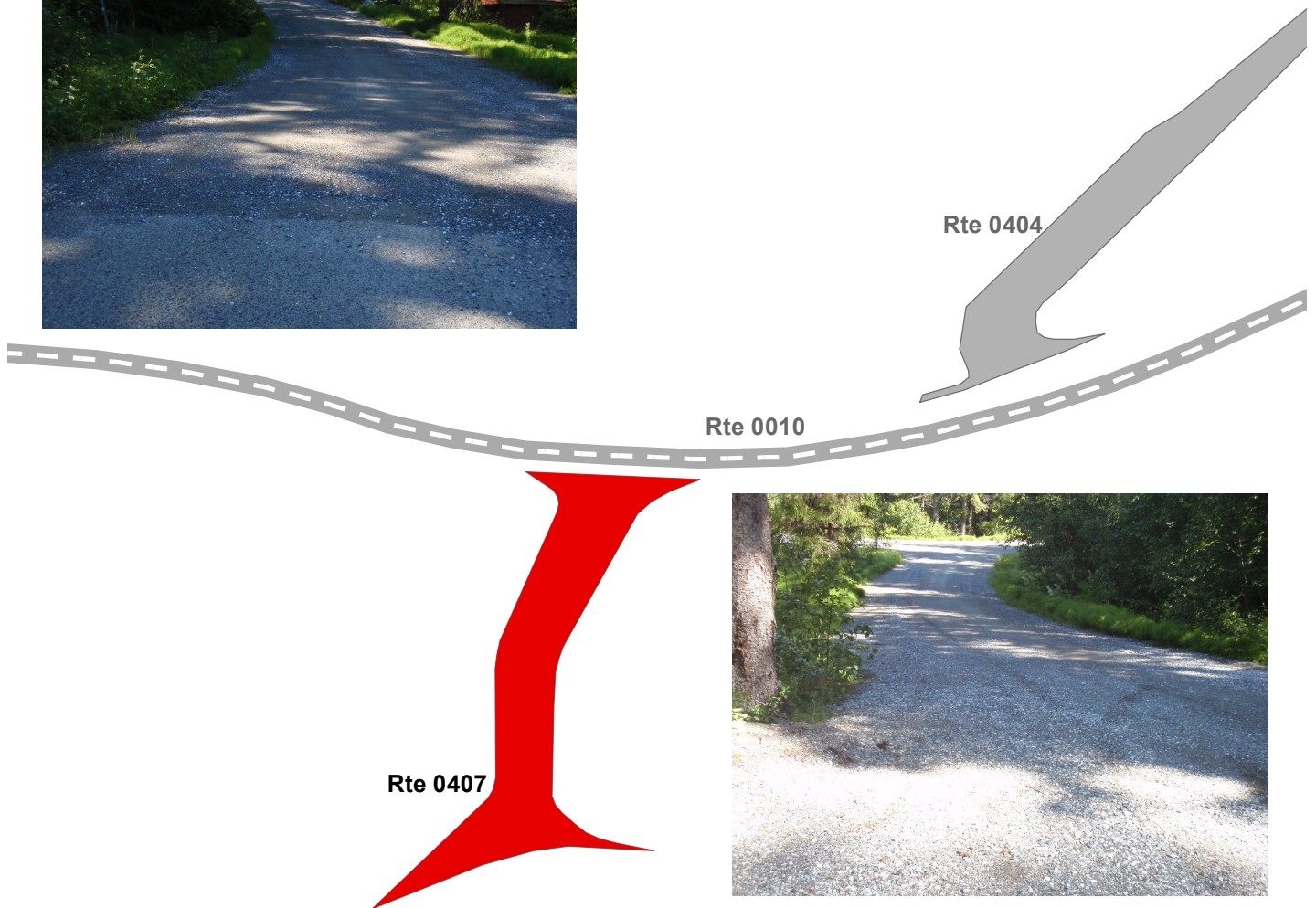
## Route 0407

WATER TREATMENT PLANT ACCESS ROAD (SERVICE ROAD C)

FROM ROUTE 0010 (PARK ROAD) ON LEFT AT MP 3.86  
TO PARKING

Route Number	Public / Non Public	Date Visited	Area (sq ft)	Lane Miles *	Surface Type
0407	Non Public	6/28/2010	5885	0.101	GR
Culverts	Drop Inlets	Gates	Curb & Gutter	Curb	PCR
0	0	0	NO CURB AND GUTTER	NO CURB	GOOD/90

\* Lane miles are based on 11' lane widths



**Section 7**  
**Parking Area**  
**Condition Rating Sheets**



**Glacier Bay**  
**National Park & Preserve**



**Federal Lands Highway**  
**Road Inventory Program**

# GLACIER BAY NATIONAL PARK & PRESERVE

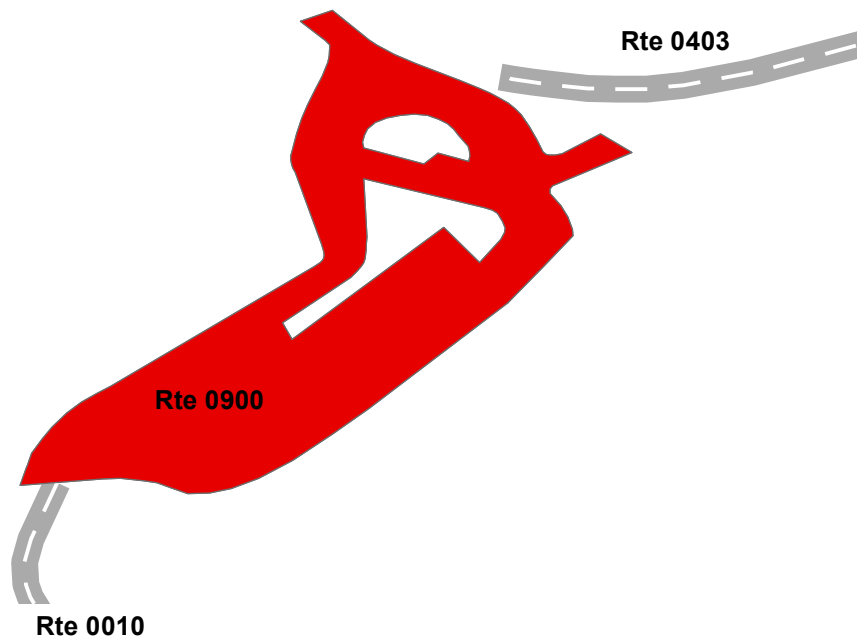
## Route 0900

### PUBLIC DOCK PARKING

FROM END OF ROUTE 0010 (PARK ROAD)  
TO END OF ROUTE 0403 (BEACHFRONT SERVICE ROAD)

Route Number	Public / Non Public	Date Visited	Area (sq ft)	Lane Miles *	Surface Type
0900	Public	6/28/2010	21308	0.367	AS
Culverts	Drop Inlets	Gates	Curb & Gutter	Curb	PCR
0	0	0	NO CURB AND GUTTER	NO CURB	GOOD/90

\* Lane miles are based on 11' lane widths



# GLACIER BAY NATIONAL PARK & PRESERVE

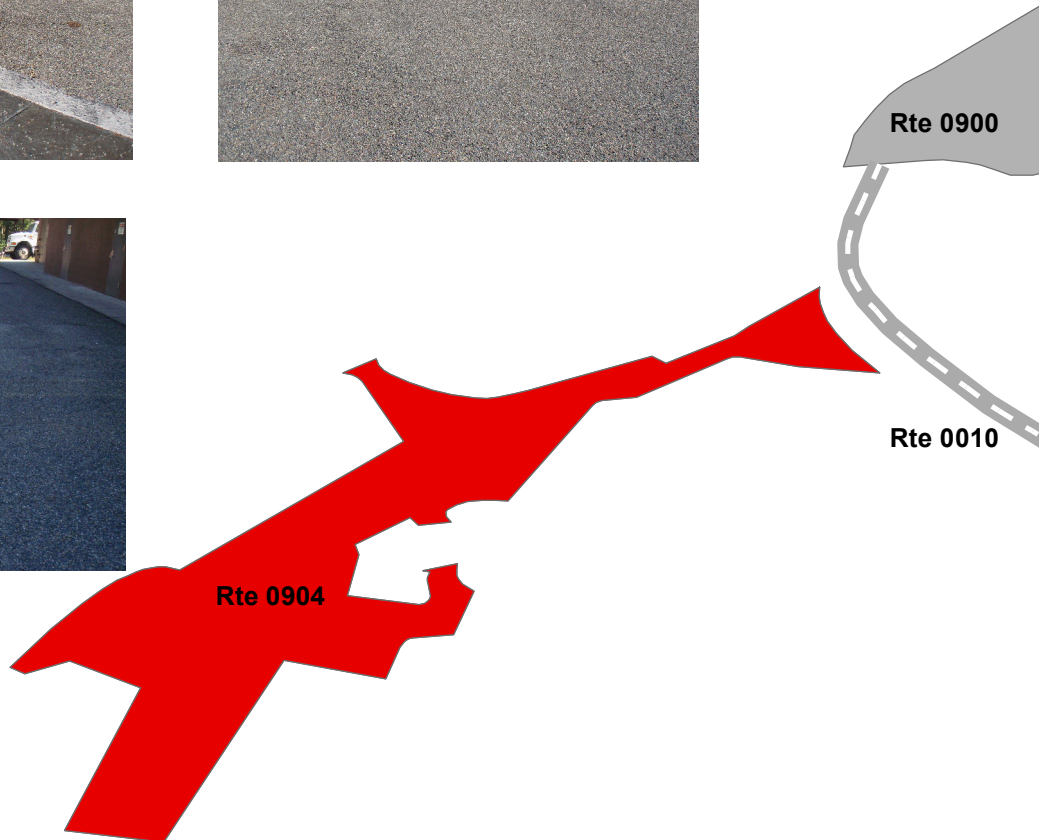
## Route 0904

### UTILITY COMPLEX PARKING AREA

FROM ROUTE 0010 (PARK ROAD) ON LEFT AT MP 4.37  
TO PARKING

Route Number	Public / Non Public	Date Visited	Area (sq ft)	Lane Miles *	Surface Type
0904	Public	6/28/2010	21696	0.374	AS
Culverts	Drop Inlets	Gates	Curb & Gutter	Curb	PCR
1	1	0	NO CURB AND GUTTER	NO CURB	GOOD/90

\* Lane miles are based on 11' lane widths



# GLACIER BAY NATIONAL PARK & PRESERVE

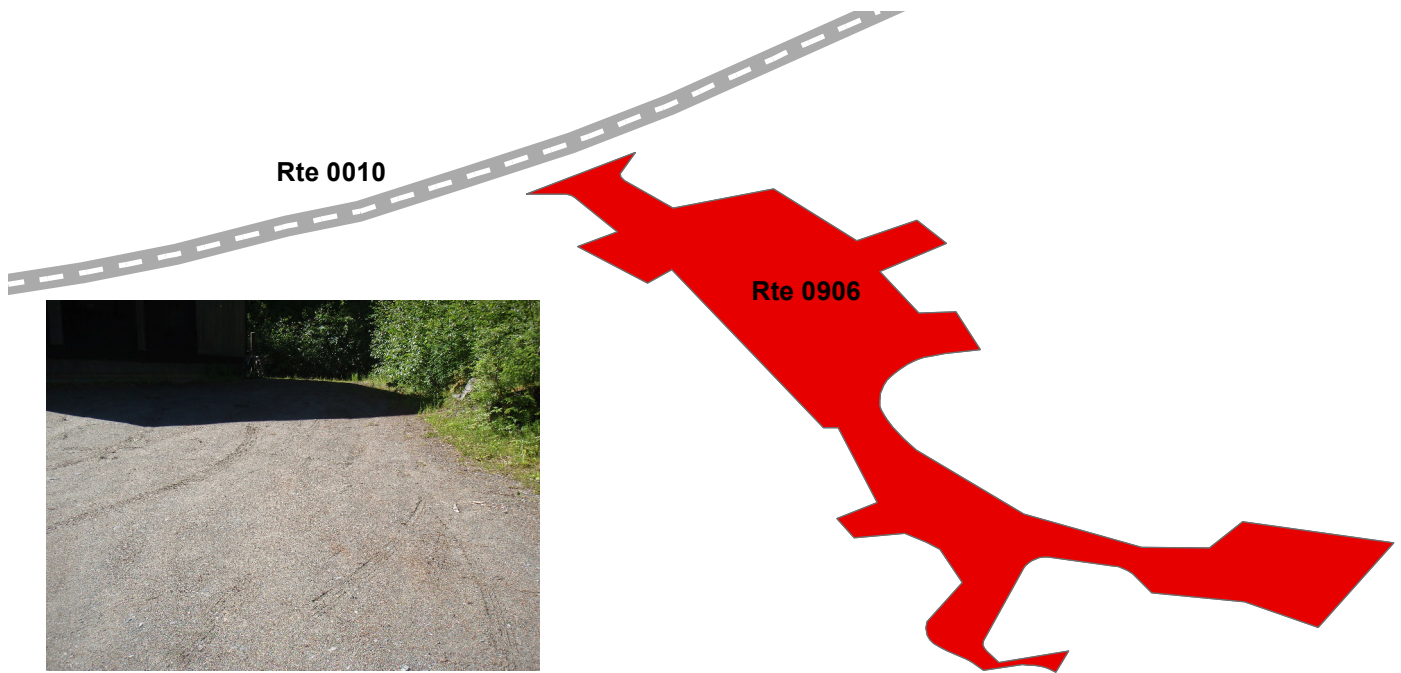
## Route 0906

### LODGE HOUSING PARKING AREA (SERVICE ROAD F)

FROM ROUTE 0010 (PARK ROAD) ON LEFT AT MP 4.21  
TO PARKING

Route Number	Public / Non Public	Date Visited	Area (sq ft)	Lane Miles *	Surface Type
0906	Public	6/28/2010	13707	0.236	GR
Culverts	Drop Inlets	Gates	Curb & Gutter	Curb	PCR
0	0	0	NO CURB AND GUTTER	NO CURB	GOOD/90

\* Lane miles are based on 11' lane widths



# GLACIER BAY NATIONAL PARK & PRESERVE

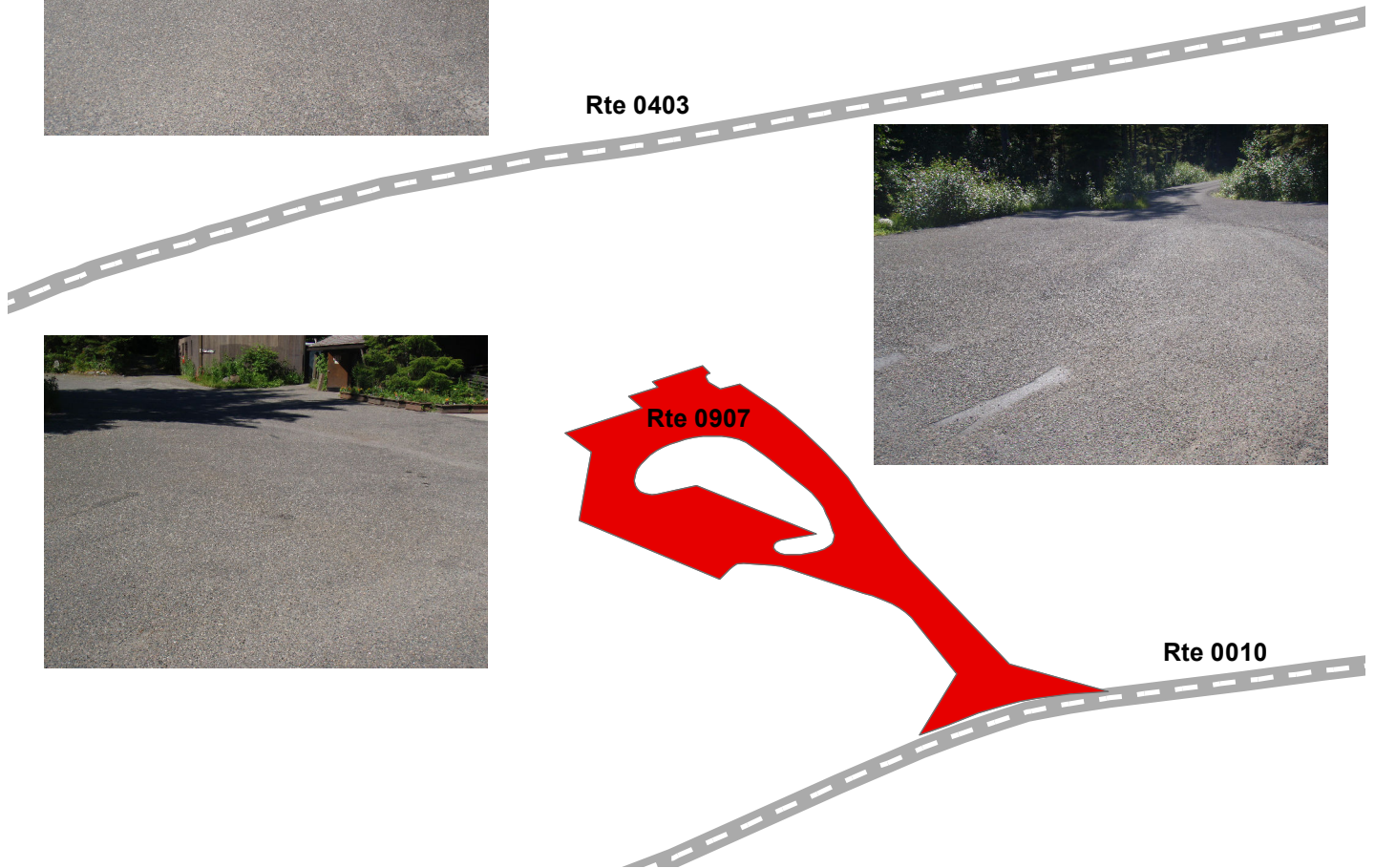
## Route 0907

### LODGE PARKING AREA

FROM ROUTE 0010 (PARK ROAD) ON RIGHT AT MP 4.15  
TO PARKING

Route Number	Public / Non Public	Date Visited	Area (sq ft)	Lane Miles *	Surface Type
0907	Public	6/28/2010	19499	0.336	AS
Culverts	Drop Inlets	Gates	Curb & Gutter	Curb	PCR
0	0	0	NO CURB AND GUTTER	ASPHALT CURB	GOOD/90

\* Lane miles are based on 11' lane widths





# GLACIER BAY NATIONAL PARK & PRESERVE

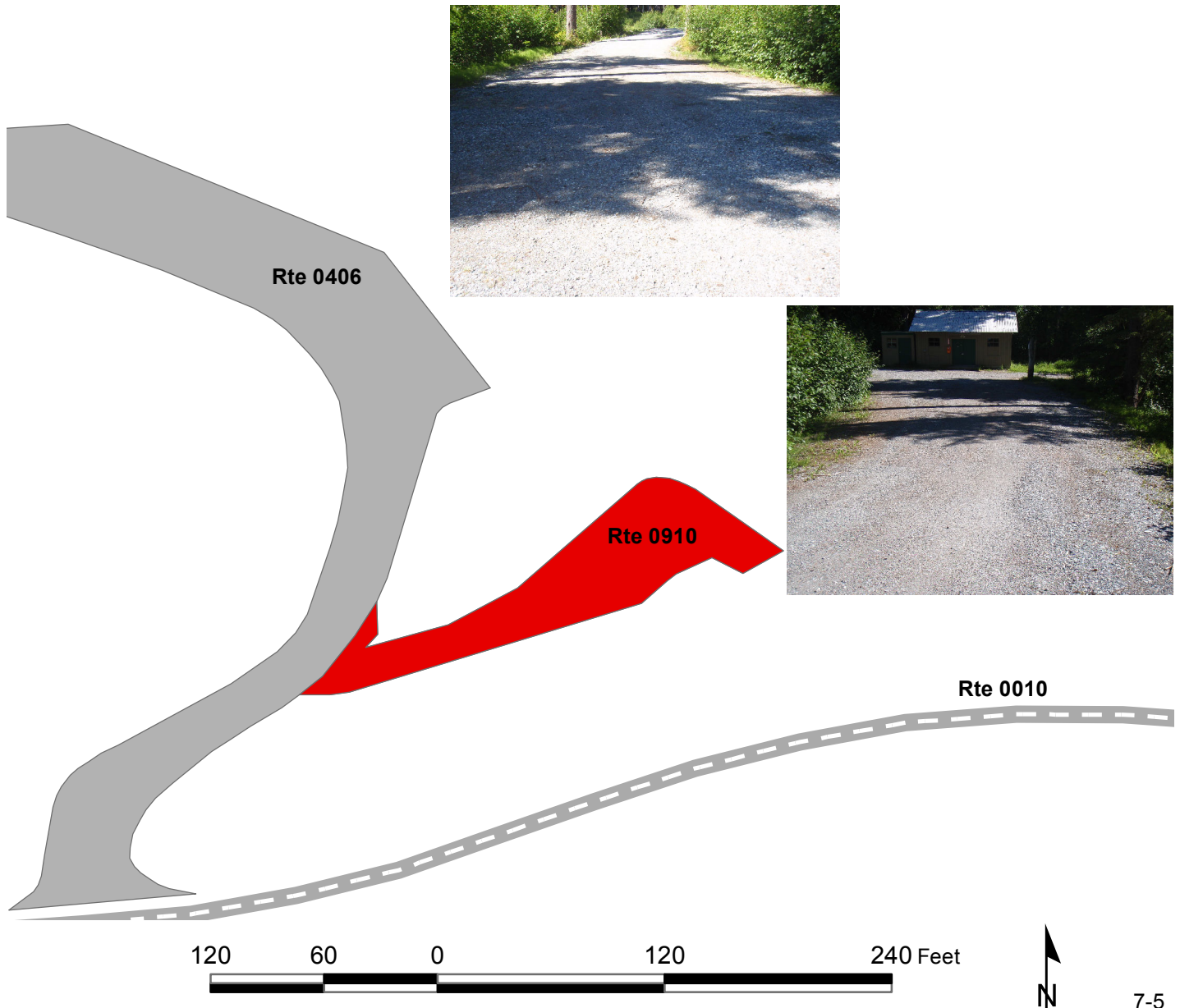
## Route 0910

### STORAGE BUILDING PARKING (SERVICE ROAD D)

FROM ROUTE 0406 (SEASONAL QUARTERS ACCESS ROAD (SERVICE ROAD D)) ON RIGHT TO PARKING

Route Number	Public / Non Public	Date Visited	Area (sq ft)	Lane Miles *	Surface Type
0910	Public	6/28/2010	4256	0.073	GR
Culverts	Drop Inlets	Gates	Curb & Gutter	Curb	PCR
0	0	0	NO CURB AND GUTTER	NO CURB	FAIR/73

\* Lane miles are based on 11' lane widths



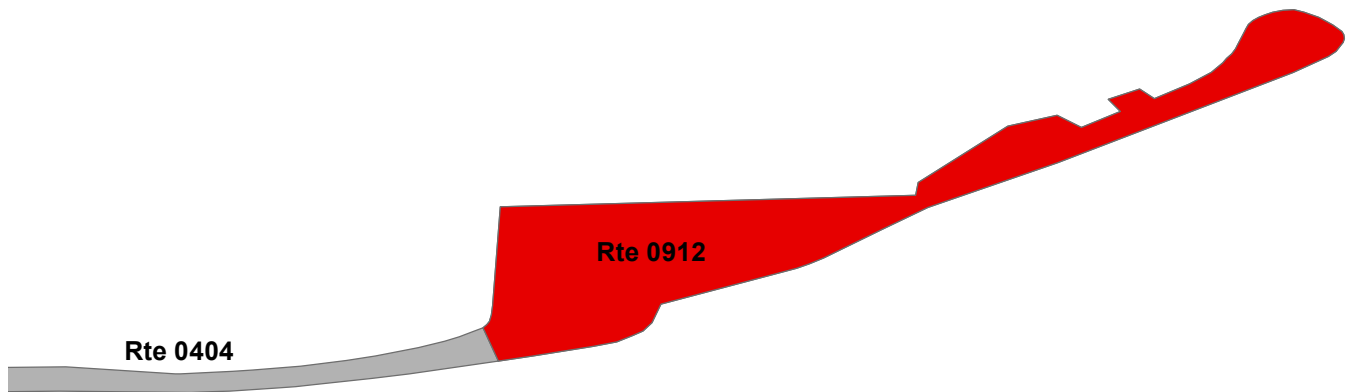
# GLACIER BAY NATIONAL PARK & PRESERVE

## Route 0912 HEADQUARTERS PARKING AREA

FROM END OF ROUTE 0404 (HEADQUARTERS ACCESS ROAD)  
TO PARKING

Route Number	Public / Non Public	Date Visited	Area (sq ft)	Lane Miles *	Surface Type
0912	Public	6/28/2010	23148	0.399	GR
Culverts	Drop Inlets	Gates	Curb & Gutter	Curb	PCR
0	0	0	NO CURB AND GUTTER	NO CURB	FAIR/73

\* Lane miles are based on 11' lane widths



# GLACIER BAY NATIONAL PARK & PRESERVE

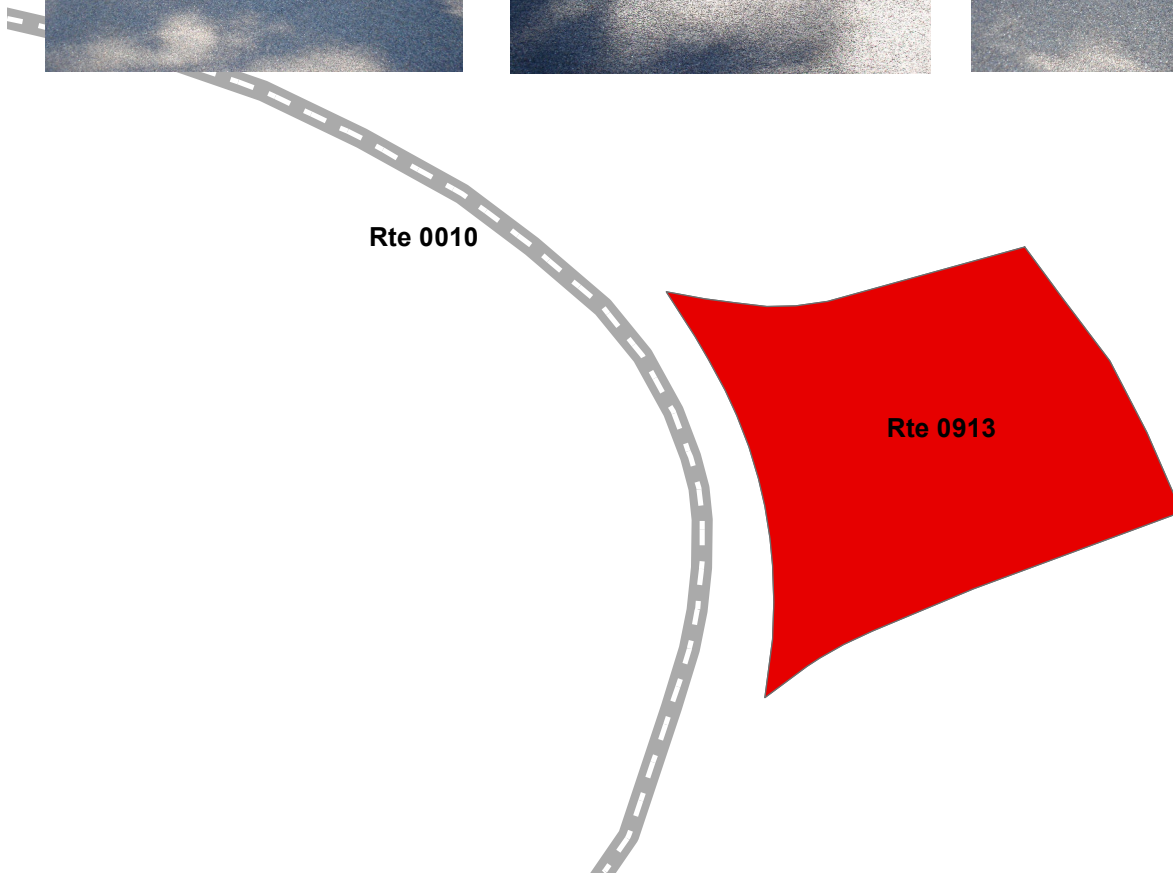
## Route 0913

### BARTLETT RIVER TRAILHEAD PARKING

ADJACENT TO ROUTE 0010 (PARK ROAD) ON RIGHT AT MP 3.67

Route Number	Public / Non Public	Date Visited	Area (sq ft)	Lane Miles *	Surface Type
0913	Public	6/28/2010	3068	0.053	AS
Culverts	Drop Inlets	Gates	Curb & Gutter	Curb	PCR
0	0	0	NO CURB AND GUTTER	NO CURB	GOOD/90

\* Lane miles are based on 11' lane widths



# GLACIER BAY NATIONAL PARK & PRESERVE

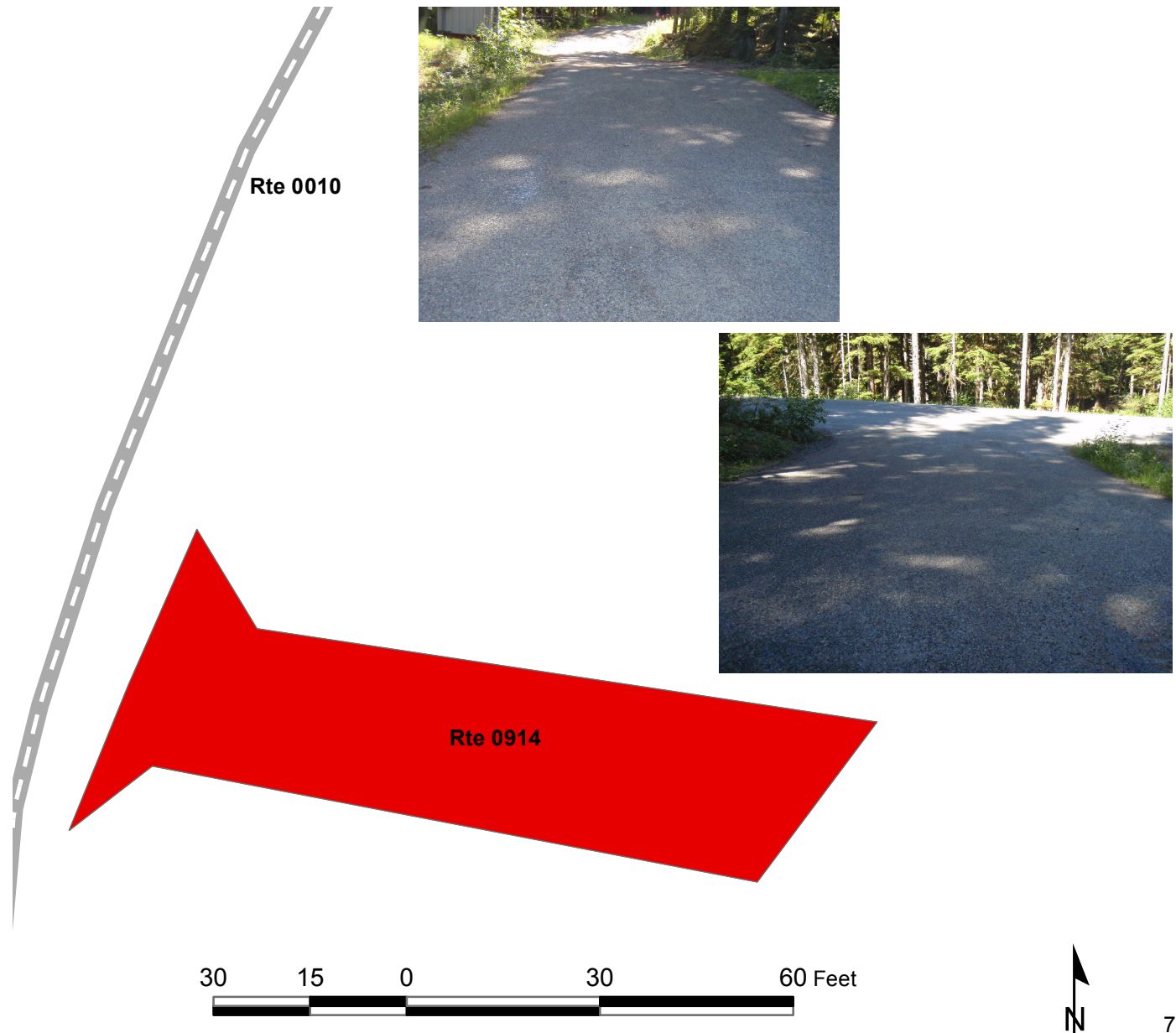
## Route 0914

### WATER TANK ACCESS AND PARKING

FROM ROUTE 0010 (PARK ROAD) ON RIGHT AT MP 3.53  
TO PARKING

Route Number	Public / Non Public	Date Visited	Area (sq ft)	Lane Miles *	Surface Type
0914	Non Public	6/28/2010	1532	0.026	AS
Culverts	Drop Inlets	Gates	Curb & Gutter	Curb	PCR
1	0	0	NO CURB AND GUTTER	NO CURB	GOOD/90

\* Lane miles are based on 11' lane widths



# GLACIER BAY NATIONAL PARK & PRESERVE

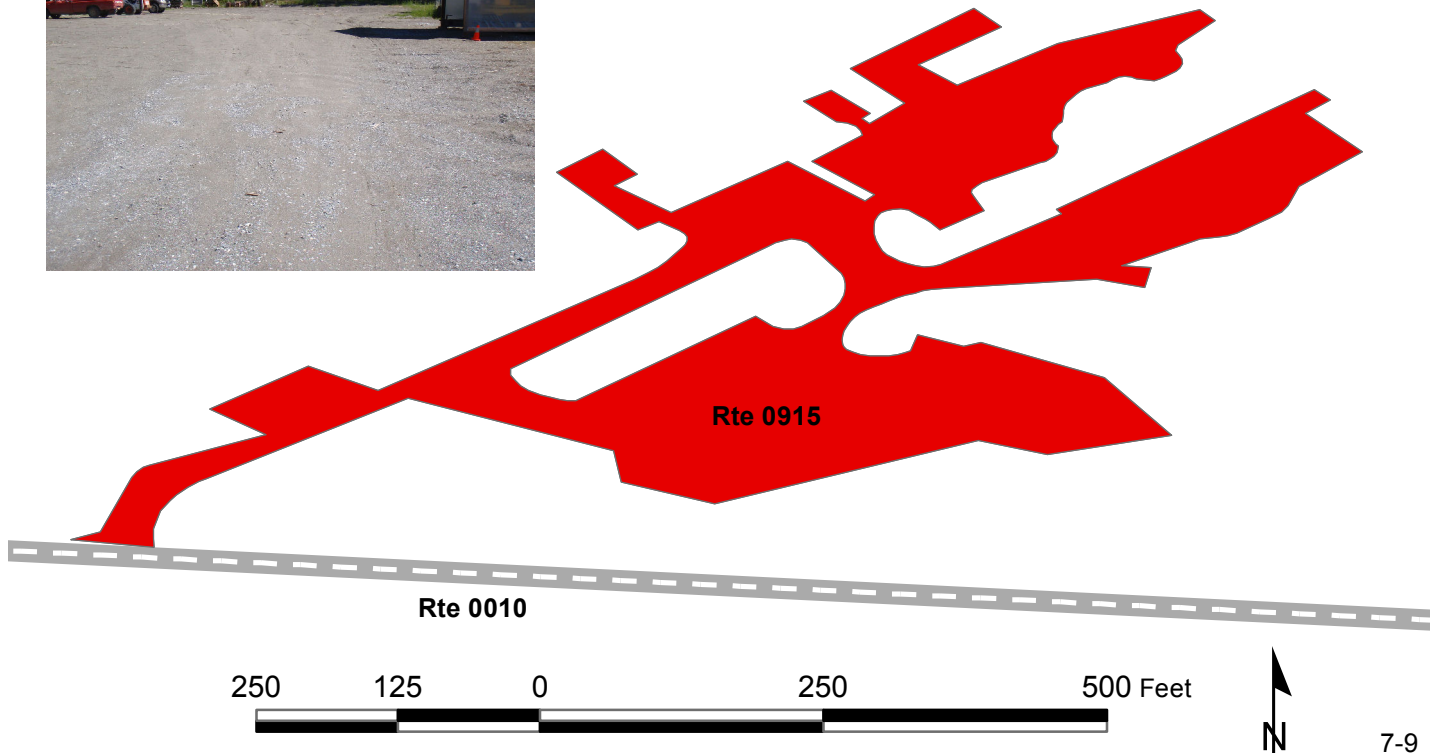
## Route 0915

### DEPOT PARKING (SERVICE ROAD A)

FROM ROUTE 0010 (PARK ROAD) ON RIGHT AT MP 2.983  
TO PARKING

Route Number	Public / Non Public	Date Visited	Area (sq ft)	Lane Miles *	Surface Type
0915	Non Public	6/28/2010	75284	1.296	GR
Culverts	Drop Inlets	Gates	Curb & Gutter	Curb	PCR
1	0	1	NO CURB AND GUTTER	NO CURB	POOR/45

\* Lane miles are based on 11' lane widths



# GLACIER BAY NATIONAL PARK & PRESERVE

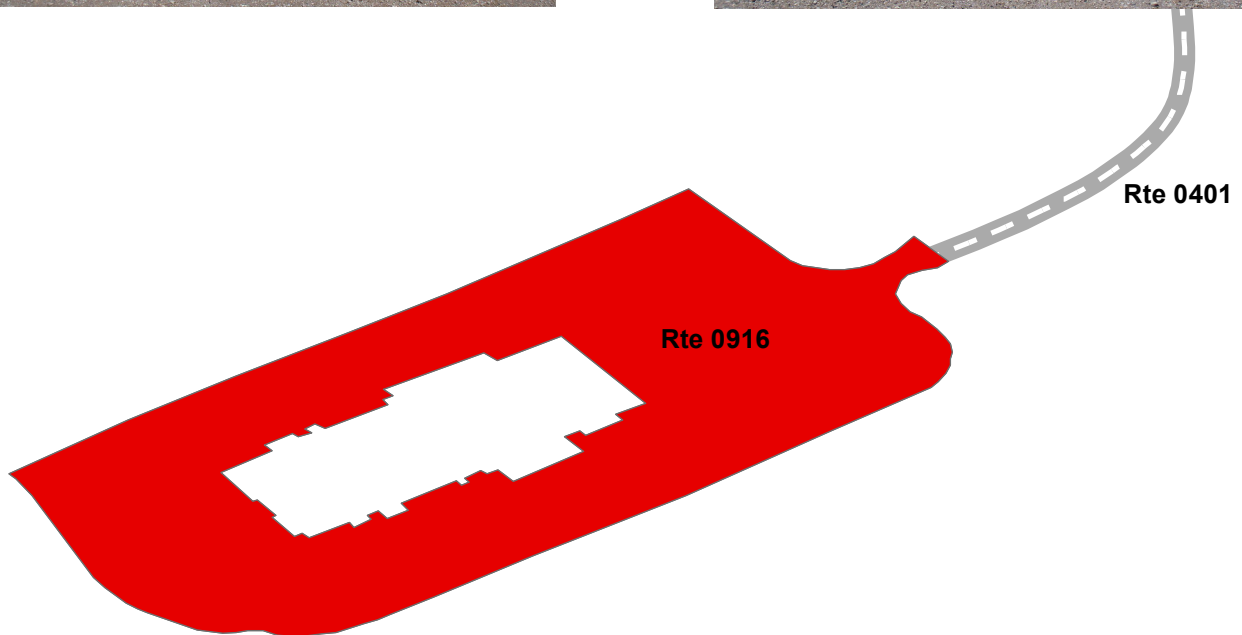
## Route 0916

### MAINTENANCE PARKING LOT

FROM END OF ROUTE 0401 (MAINTENANCE FACILITY ACCESS ROAD (SERVICE ROAD B))  
TO PARKING

Route Number	Public / Non Public	Date Visited	Area (sq ft)	Lane Miles *	Surface Type
0916	Public	6/28/2010	109290	1.882	GR
Culverts	Drop Inlets	Gates	Curb & Gutter	Curb	PCR
0	0	0	NO CURB AND GUTTER	NO CURB	GOOD/90

\* Lane miles are based on 11' lane widths



**Section 8**  
**Parkwide/Route**  
**Maintenance Features Summaries**



**Glacier Bay**  
**National Park & Preserve**



**Federal Lands Highway**  
**Road Inventory Program**

Note: There are no DCV routes in this park. However, counts were made of the features listed in the table below.

Route Number	Culverts	Drop Inlets	Gates	Curb	Curb & Gutter
0010	0	0	0	NO	NO
0400	0	0	0	NO	NO
0401	0	0	0	NO	NO
0403	0	0	0	NO	NO
0404	0	0	0	NO	NO
0405	NC	NC	NC	NC	NC
0406	1	0	0	NO	NO
0407	0	0	0	NO	NO
0900	0	0	0	NO	NO
0904	1	1	0	NO	NO
0906	0	0	0	NO	NO
0907	0	0	0	ASPHALT	NO
0910	0	0	0	NO	NO
0912	0	0	0	NO	NO
0913	0	0	0	NO	NO
0914	1	0	0	NO	NO
0915	1	0	1	NO	NO
0916	0	0	0	NO	NO
Totals	4	1	1		

NC = Not Collected

NO = This feature does not exist



**Section 9**  
**Route Maintenance Features**  
**Road Logs**



**Glacier Bay**  
**National Park & Preserve**



**Federal Lands Highway**  
**Road Inventory Program**

Note: This park is classified as a Small Park. There are no DCV routes in this park. Therefore, there are no Route Maintenance Features Road Logs to report in this section.

# Section 10 Appendix



## Glacier Bay National Park & Preserve



Federal Lands Highway  
Road Inventory Program

## GLOSSARY OF TERMS AND ABBREVIATIONS

<u>TERM OR ABBREVIATION</u>	<u>DESCRIPTION OR DEFINITION</u>
Excellent	Excellent rating with an index value of 98
Fair	Fair rating with an index value of 73
Func. Class	Functional Classification (see Route ID, Section 2)
Good	Good rating with an index value of 90
MRR	Manually Rated Route
MRL	Manually Rated Line
MRP	Manually Rated Polygon
N/A	Not Applicable
NC	Not Collected
PKG	Parking Area
Poor	Poor rating with an index value of 45

### **GPS on Manually Rated Roads (MRR)**

Parking areas, some roads, and other paved areas that are not fully drivable with the RIP Data Collection Vehicle are collected manually by field technicians. GPS is collected for these routes using portable Trimble GPS backpack units.

## **Geodatabase – Background and Metadata**

In addition to this park report, a *geodatabase* containing both tabular and spatial data specific to this park has been provided. All data disseminated in the preceding report has been obtained from the tables and fields within said geodatabase. The geodatabase can be referenced for tabular data via Microsoft Access or for both tabular and spatial data via ESRI's ArcGIS Suite of software which consists of; ArcMap, ArcCatalog and ArcExplorer. Consolidating the RIP data into one database creates a seamless relationship of tables and geographic data. It will allow RIP to facilitate easier updates and enhancements in the future.

A geodatabase can be thought of as simply a database containing spatial data. Many different tables are contained with the park's geodatabase. A complete and thorough description of the tables and fields contained within this geodatabase can be found in the *metadata*. The metadata is attached directly within the geodatabase and can be accessed via ESRI's ArcCatalog.