



Federal Lands Highway Road Inventory Program

Road Inventory and Condition Assessment



Lincoln Home National Historic Site LIHO - 6530

Cycle 5 Report

**Prepared By: Federal Highway Administration
Road Inventory Program (RIP)
Data Collected: 04/2012
Report Date: 08/2012**

Lincoln Home National Historic Site in Illinois

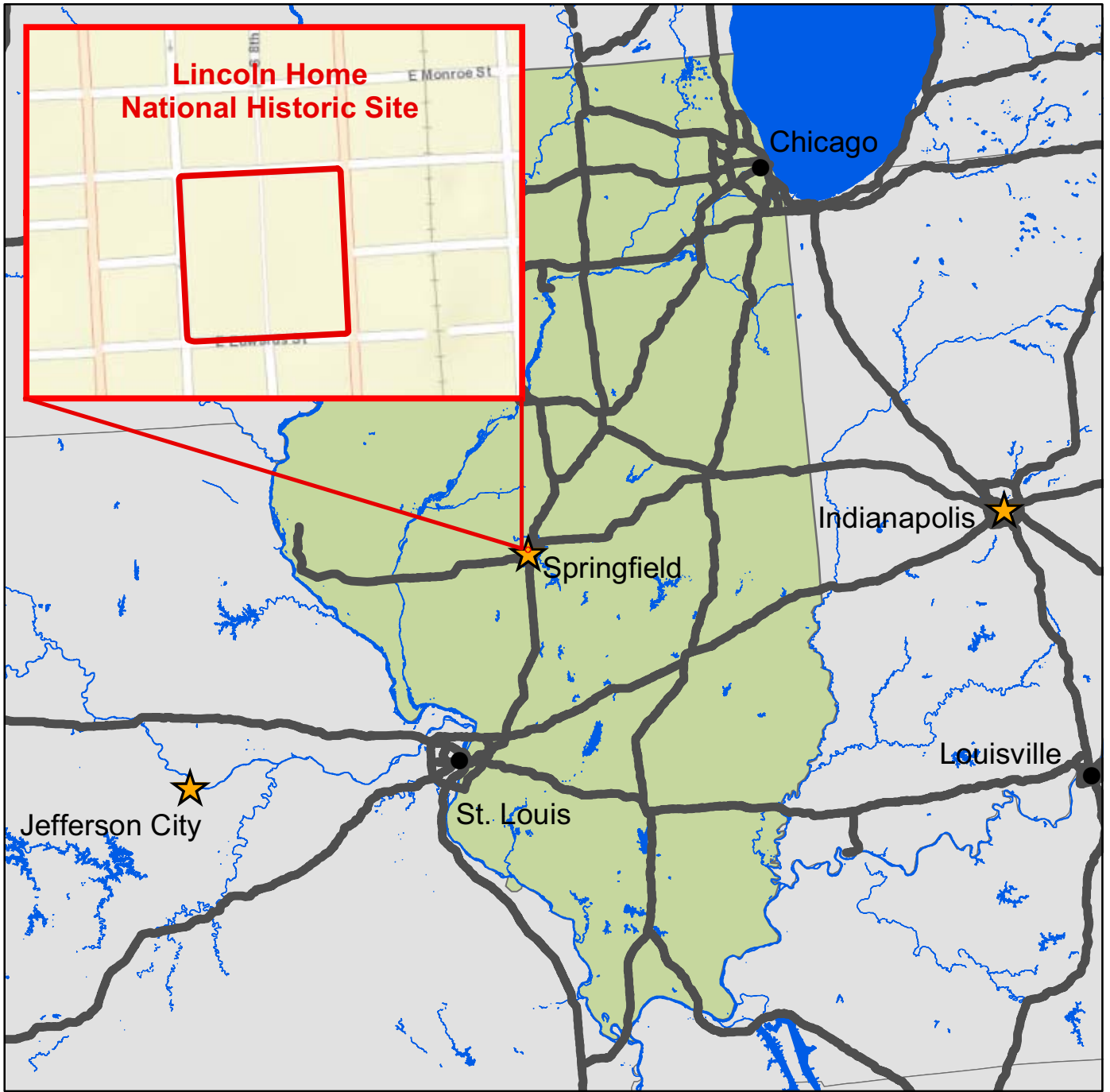




TABLE OF CONTENTS

<u>SECTION</u>	<u>PAGE</u>
1. INTRODUCTION	1 - 1
2. PARK ROUTE INVENTORY Route IDs, Subcomponents & Changes Report (As Applicable)	2 - 1
3. PARK SUMMARY INFORMATION	3 - 1
4. PARK ROUTE LOCATION MAPS Route Location Key Map Route Location Area Map	4 - 1 4 - 2
5. PAVED ROUTE CONDITION RATING SHEETS	5 - 1
6. MANUALLY RATED PAVED ROUTE CONDITION RATING SHEETS MRR Pages	6 - 1
7. PARKING AREA CONDITION RATING SHEETS Paved Parking Area Pages	7 - 1
8. PARKWIDE / ROUTE MAINTENANCE FEATURES SUMMARIES	8 - 1
9. ROUTE MAINTENANCE FEATURES ROAD LOGS	9 - 1
10. APPENDIX Glossary of Terms and Abbreviations GPS on Manually Rated Routes Geodatabase Background and Metadata	10 - 1 10 - 2 10 - 3

Section 1 Introduction



Lincoln Home National Historic Site



INTRODUCTION

The Federal Highway Administration, (FHWA), in the mid 1970s, was charged with the task of identifying surface condition deficiencies and corrective priorities on National Park Service (NPS) roads and parkways. Additionally, FHWA was tasked with establishing an integrated maintenance features inventory, locating features such as culverts, guardrails, and signs, among others, along NPS roads and parkways. As a result, in 1976 the NPS and FHWA entered into an MOA (Memorandum Of Agreement) which established the RIP (Road Inventory Program). This MOA was terminated and revised in 1980 to establish a new MOA aiming to update RIP data and develop a long-range program to improve and maintain NPS roads to designated condition standards and establish a maintenance management program.

The FHWA completed this initial phase of the RIP in the early 1980s. As a result of this effort, each NPS site included in the study received a RIP Report known as the “Brown Book” which included the information collected during this first RIP phase.

In the 1990s, the effort was again renewed to update and maintain the RIP data. By this time the computer age was upon us and a process was employed that relied heavily on electronic data collection and computer technology. A cyclical program was developed and the RIP completed two cycles of data collection from 1994 to 2001. Cycle 1, starting in 1994, was conducted in 44 “large parks” (parks containing 10 or more paved route miles). Cycle 2 began in 1997 and comprised 79 large parks and 5 small parks totaling 4,874 paved route miles. Each of these parks received a RIP Report known as the “Blue Book”. Cycle 3, from 2001 to 2004, was conducted in all parks, large and small, that contained any paved routes, including parking areas and, again, each park received a RIP Report and associated electronic files.

Cycle 4 was initiated in the spring of 2006 covering 86 large parks and several associated small parks consisting of 5,553 paved route miles and 6,232 paved parking areas. Data collection has been completed for Cycle 4 and all data has been delivered to the NPS.

In 2005, the FHWA began implementing the use of a Pavement Management System (PMS) to assist the NPS in prioritizing Pavement Maintenance and Rehabilitation activities. The PMS used by FHWA is the Highway Pavement Management Application (HPMA) and this software has the ability to store inventory and condition data from RIP and forecast future performance using prediction models. Outputs include performance and condition reports at the National, Regional, Park, or Route level. A regional prioritized list and optimization have been produced for most regions and the Federal Highway Deferred Maintenance is calculated via the HPMA.

In an effort to improve the accuracy of treatment recommendations and pavement condition descriptions, an extensive study was completed throughout 2010 that has resulted in changes to the RIP condition reporting method, specifically the distresses and indexes that comprise the Pavement Condition Rating (PCR). It was determined that a better representation of PCR could

be achieved by modifying the relative impact certain distresses would have on the overall rating. The changes that were implemented were endorsed by management at both the FHWA and NPS in October 2010. These changes will allow greater use of RIP and HPMA data for not simply condition data reporting, but also as a reliable tool for project identification and selection. Because of these changes, the PCR Condition ratings reported in Cycle 5 do not directly relate to the condition ratings reported in previous cycle RIP Reports. For more detailed information about the changes, see Section 3 and Section 10 in this RIP Report.

Cycle 5 has launched in the summer of 2010 and will again comprise all parks, large and small, that are served by paved roads and/or parking areas. For Cycle 5, the decision was made to collect condition data in large parks on Functional Class 1, 2, and 7 paved routes only, as well as any new routes that were previously not collected. In small parks, all paved routes and parking areas will be collected. As a result, this will include 81 large parks with 4,459 paved route miles and 168 small parks with 529 paved route miles and associated paved parking areas.

Since 1984, the Road Inventory Program has been funded through the Federal Lands Highway Park Roads and Parkways (PRP) Program. Currently, coordination of the RIP with FLH is under the NPS Washington Headquarters Park Facility Management Division. The FLH Washington office coordinates policy and prepares national reports and needs assessment studies for Congress.

In 1998, the Transportation Equity Act for the 21st Century (TEA-21) amended Title 23 U.S.C., and inserted Section 204(a)(6) requiring the FHWA and NPS, to develop by rule, a Pavement Management System (PMS) applied to park roads and parkways serving the National Park System.

FLH is responsible for the accuracy of all data presented in this report. Any questions or comments concerning the contents of this report should be directed to the national RIP Coordinator located in Sterling, Virginia.

Respectfully,

FHWA RIP Team

FHWA/Eastern Federal Lands
21400 Ridgetop Circle
Sterling, VA 20166
(703) 404-6371

FHWA/Central Federal Lands
12300 West Dakota Ave
Lakewood, CO 80228
(720) 963-3560

Section 2

Park Route Inventory



Lincoln Home National Historic Site



Federal Lands Highway
Road Inventory Program

Cycle 5 NPS/RIP Route ID Report

Road Inventory Program 08/01/2012

(Numerical By Route #)

Page 1 of 3

Shading Color Key:

White = Paved Routes, DCV Driven

Yellow = Unpaved Routes, DCV not Driven

Blue = All Paved Parking Areas

Green = All Unpaved Parking Areas

Red text denotes approx. mileage

Grey = Paved Routes, DCV not Driven

Black = State, Local or Private non-NPS Routes

■ = Concession Route Flag ON

*Unpaved route data was obtained from NPS and was not inventoried by the Road Inventory Program (RIP).

** DCV - Data Collection Vehicle NC - Not Collected

LIHO

LINCOLN HOME NATIONAL HISTORIC SITE

Rte. No.	Cycle Collected	FMSS No.	Concess Route	Route Name	Route Description From To	Maint. District	Paved Miles	Un-Paved Miles	Total Route Length	Func. Class	Manual Rated SQ/FT	Surf. Type	Area Maps
0400	5	41292		WEST ALLEY	FROM EAST EDWARDS STREET TO EAST CAPITOL AVENUE	N/A	0.15	0.00	0.15	6	12,103	AS	1
0401	5	41288		EAST ALLEY	FROM EAST CAPITOL AVENUE TO EAST EDWARDS STREET	N/A	0.15	0.00	0.15	6	9,636	AS	1
0403ZZ	5	42513		JACKSON STREET AREAS	FROM SOUTH 9TH STREET TO SOUTH 7TH STREET	N/A	0.14	0.00	0.14	6	20,671	AS	1
0404	5	41284		EIGHTH STREET	FROM EAST CAPITOL AVENUE TO EAST EDWARDS STREET	N/A	0.15	0.00	0.15	6	29,679	AS	1
0900ZZ	5	41110		BUS AND VISITOR CENTER BACK PARKING AREAS	FROM SOUTH 7TH STREET AND ROUTE 0400 (WEST ALLEY) TO PARKING	N/A	0.00	0.00	0.00		14,834	AS	1
0901	5	41104		VISITOR PARKING	FROM SOUTH 7TH STREET TO SOUTH 7TH STREET	N/A	0.00	0.00	0.00		25,765	AS	1
0902	5	104530		STUVE PARKING AREA	FROM EAST EDWARDS STREET TO PARKING	N/A	0.00	0.00	0.00		2,522	AS	1
0903ZZ	5	63948		SHUTT HOUSE PARKING AREAS	ADJACENT TO ROUTE 0400 (WEST ALLEY) ON RIGHT	N/A	0.00	0.00	0.00		1,309	AS	1
0905ZZ	5	63950		MILLER HOUSE PARKING AREAS	ADJACENT TO ROUTE 0400 (WEST ALLEY) ON RIGHT	N/A	0.00	0.00	0.00		1,637	AS	1
0906	5	63951		ROBINSON HOUSE PARKING	ADJACENT TO ROUTE 0401 (EAST ALLEY) ON RIGHT	N/A	0.00	0.00	0.00		1,194	AS	1
0907	5	63952		COOK HOUSE PARKING	ADJACENT TO ROUTE 0401 (EAST ALLEY) ON RIGHT	N/A	0.00	0.00	0.00		877	AS	1
0908	5	63947		NORTH EAST PARKING AREA	ADJACENT TO ROUTE 0401 (EAST ALLEY) ON RIGHT	N/A	0.00	0.00	0.00		3,480	AS	1
0909	5	104512		STORAGE PARKING AREA	ADJACENT TO ROUTE 0401 (EAST ALLEY) ON LEFT	N/A	0.00	0.00	0.00		756	AS	1
0911	NC	63949		IRWIN PARKING	ADJACENT TO ROUTE 0401 (EAST ALLEY) ON RIGHT	N/A	0.00	0.00	0.00		768	GR	

Cycle 5 NPS/RIP Route ID Report

Road Inventory Program 08/01/2012

(Numerical By Route #)

Page 2 of 3

Shading Color Key:

White = Paved Routes, DCV Driven

Yellow = Unpaved Routes, DCV not Driven

Blue = All Paved Parking Areas

Green = All Unpaved Parking Areas

Red text denotes approx. mileage

Grey = Paved Routes, DCV not Driven

Black = State, Local or Private non-NPS Routes

■ = Concession Route Flag ON

*Unpaved route data was obtained from NPS and was not inventoried by the Road Inventory Program (RIP).

** DCV - Data Collection Vehicle NC - Not Collected

CYCLE 5 SUMMARY TOTALS FOR LINCOLN HOME NATIONAL HISTORIC SITE

CYCLE 5 ROUTE TOTALS	
DCV Driven Route Miles	0.00
Manually Rated Route Miles	0.00
TOTAL PARK ROUTE MILES COLLECTED IN CYCLE 5	0.00
Manually Rated Routes (SQFT)	72,089
TOTAL UNPAVED PARK ROUTE MILES	0.00

CYCLE 5 CONCESSION TOTALS	
Concession Paved Route Miles	0.00
Concession Unpaved Route Miles	0.00
TOTAL CONCESSION ROUTE MILES	0.00
Concession Paved Parking Area SQFT	0
Concession Unpaved Parking Area SQFT	0
TOTAL CONCESSION PARKING AREA SQFT	0
Concession Manually Rated Rotes SQFT	0

* CYCLE 5 PARKING AREA TOTALS	
Paved Parking (SQFT)	52,374
Unpaved Parking (SQFT)	768
TOTAL PARKING (SQFT)	53,142

CYCLE 5 WEIGHTED AVERAGE PARK VALUES	
DCV Driven PCR	N/A
**Manually Rated Routes PCR	90
**Parking PCR	79
***Total Equivalent Lane Miles	2.14

* - The Parking Area Totals SQFT value represents all parking areas collected in Cycle 5, both park and concessionaire.

** - Parking and Manually Rated Routes are assigned the following PCR values based on their observed condition: Construction=-1, Excellent=97, Good=90, Fair=73, and Poor=45.

*** - Equivalent Lane Miles are calculated by route using the following equations : DCV and Manually Rated Lines Routes=(PAVE_WIDTHxPAVED_MI)/11 foot lane. Parking Areas=SQ_FEET/5280/11. Manually Rated Polygons=SQ_FEET/5280/11.

Cycle 5 NPS/RIP Route ID Report

Road Inventory Program 08/01/2012

(Numerical By Route #)

Page 3 of 3

Shading Color Key:

White = Paved Routes, DCV Driven

Yellow = Unpaved Routes, DCV not Driven

Blue = All Paved Parking Areas

Green = All Unpaved Parking Areas

Red text denotes approx. mileage

Grey = Paved Routes, DCV not Driven

Black = State, Local or Private non-NPS Routes

■ = Concession Route Flag ON

*Unpaved route data was obtained from NPS and was not inventoried by the Road Inventory Program (RIP).

** DCV - Data Collection Vehicle NC - Not Collected

General Park Road Functional Classification Table

- Class 1** Principal Park Road/Rural Parkway (Public Roads) Roads which constitute the main access route, circulatory tour, or thoroughfare for park visitors. Route Numbers 1 - 99. Note: Rural parkways (e.g. Natchez Trace) are numbered 1 - 9. State Routes Inventoried for Park. Route Numbers 5000-5999
- Class 2** Connector Park Road (Public Roads) - Roads which provide access within a park to areas of scenic, scientific, recreational or cultural interest, such as overlooks, campgrounds, etc. Route Numbers 100-199.
- Class 3** Special Purpose Park Road (Public Roads) - Roads which provide circulation within public areas, such as campgrounds, picnic areas, visitor center complexes, concessionaire facilities, etc. These roads generally serve low-speed traffic and are often designed for one-way circulation. Route Numbers 200-299.
- Class 4** Primitive Park Roads (Public Roads) - Roads which provide circulation through remote areas and/or access to primitive campgrounds and undeveloped areas. These roads frequently have no minimum design standards and their use may be limited to specially equipped vehicles. Route Numbers 200-299. Note: Functional Classes 3 and 4 have the same route numbers because, historically, they were numbered similarly.
- Class 5** Administrative Access Road (Administrative Roads) - All public roads intended for access to administrative developments or structures such as park offices, employee quarters, or utility areas. Route Numbers 400-499.
- Class 6** Restricted Road (Administrative Roads) - All roads normally closed to the public, including patrol roads, truck trails, and other similar roads. Route Numbers 400-499. Note: Functional Classes 5 and 6 have the same route numbers because historically they were numbered similarly and often there is little distinction between these routes. For example, because utility areas and employee housing are often closed to the public, this restriction would result in classification of FC 6 rather than FC 5.
- Class 7** Urban Parkway (Urban Parkways and City Streets) - These facilities serve high volumes of park and non-park related traffic and are restricted, limited-access facilities in an urban area. This category of roads primarily encompasses the major parkways which serve as gateways to our nation's capital. Other major park roads or portions thereof, however, may be included in this category. Route Numbers 1-9.
- Class 8** City Streets (Urban Parkways and City Streets) - City streets are usually extensions of the adjoining street system that are owned and maintained by the National Park Service. The construction and/or reconstruction should conform with accepted local engineering practice and local conditions. Route Numbers 600-699.

A park road system contains those roads within or giving access to a park or other unit of the NPS which are administered by the NPS, or by the Service in cooperation with other agencies. The assignment of a functional classification (FC) to a park road is not based on traffic volumes or design speed, but on the intended use or function of that road or route.

The historic route numbering system also included a 300 number series for interpretive roads, and a 500 series for one-way roads. There are approximately 250 roads nationwide which are designated by the 300 and 500 series. The numbers for these roads will be maintained for reporting consistency. However, since these interpretive and one-way routes are not as clearly tied to a specific functional class, the 300 and 500 series will be discontinued for future use.

5000 route numbers are assigned to Non-NPS Routes that are State, County or City owned which border, traverse, or provide access to Park Facilities or Assets. 5000 Routes are driven for GPS and Video Log only.

Surface Type Abbreviations:

- AS - Asphaltic Concrete Pavement**
- CO - Portland Cement Concrete Pavement**
- BR - Brick or Pavers Road Bed**
- CB - Cobble Stone Road Bed**
- GR - Gravel Road Bed**
- SA - Sand Road Bed**
- NV - Native or Dirt Material Road Bed**
- OT - Other Materials Road Bed**

NPS/RIP Subcomponent Details for LIHO

Road Inventory Program 08/01/2012

(Numerical By Subcomponent #)

Page 1 of 2

Shading Color Key:

White = Paved Routes, DCV Driven

Yellow = Unpaved Routes, DCV not Driven

Blue = All Paved Parking Areas

Green = All Unpaved Parking Areas

Red text denotes approx. mileage

Grey = Paved Routes, DCV not Driven

Black = State, Local or Private non-NPS Routes

■ = Concession Route Flag ON

*Unpaved route data was obtained from NPS and was not inventoried by the Road Inventory Program (RIP).

LIHO

LINCOLN HOME NATIONAL HISTORIC SITE

Asset Entered in FMSS System

Rte. No.	FMSS No.	Cycle Collected	Route Name	From	To	Concess Route	Func. Class	Paved Miles	Un-Paved Miles	Total Route Length	Manual Rated SQ/FT
0403ZZ	42513	5	JACKSON STREET AREAS	FROM SOUTH 9TH STREET	TO SOUTH 7TH STREET		6	0.14	0.00	0.14	20,671
0900ZZ	41110	5	BUS AND VISITOR CENTER BACK PARKING AREAS	FROM SOUTH 7TH STREET AND ROUTE 0400 (WEST ALLEY)	TO PARKING			0.00	0.00	0.00	14,834
0903ZZ	63948	5	SHUTT HOUSE PARKING AREAS	ADJACENT TO ROUTE 0400 (WEST ALLEY) ON RIGHT				0.00	0.00	0.00	1,309
0905ZZ	63950	5	MILLER HOUSE PARKING AREAS	ADJACENT TO ROUTE 0400 (WEST ALLEY) ON RIGHT				0.00	0.00	0.00	1,637

Asset LIHO-0403ZZ Subcomponent Breakdown

Rte. No.	FMSS No.	Cycle Collected	Route Name	From	To	Concess Route	Func. Class	Paved Miles	Un-Paved Miles	Total Route Length	Manual Rated SQ/FT
0403AZ	42513	5	JACKSON STREET COBBLESTONE AREA (EAST END)	FROM SOUTH 9TH STREET	TO BEGINNING OF ROUTE 0403BZ (JACKSON STREET)		6	0.03	0.00	0.03	4,134
0403BZ	42513	5	JACKSON STREET	FROM END OF ROUTE 0403AZ (JACKSON STREET COBBLESTONE AREA (EAST END))	TO BEGINNING OF ROUTE 0403CZ (JACKSON STREET COBBLESTONE AREA (WEST END))		6	0.08	0.00	0.08	12,709
0403CZ	42513	5	JACKSON STREET COBBLESTONE AREA (WEST END)	FROM END OF ROUTE 0403BZ (JACKSON STREET)	TO SOUTH 7TH STREET		6	0.03	0.00	0.03	3,828

Asset LIHO-0900ZZ Subcomponent Breakdown

Rte. No.	FMSS No.	Cycle Collected	Route Name	From	To	Concess Route	Func. Class	Paved Miles	Un-Paved Miles	Total Route Length	Manual Rated SQ/FT
0900AZ	41110	5	BUS PARKING	FROM SOUTH 7TH STREET	TO ROUTE 0400 (WEST ALLEY)			0.00	0.00	0.00	14,168
0900BZ	41110	5	VISITOR CENTER BACK PARKING	ADJACENT TO ROUTE 0400 (WEST ALLEY) ON LEFT				0.00	0.00	0.00	666

NPS/RIP Subcomponent Details for LIHO

Road Inventory Program 08/01/2012

(Numerical By Subcomponent #)

Page 2 of 2

Shading Color Key:

White = Paved Routes, DCV Driven

Yellow = Unpaved Routes, DCV not Driven

Blue = All Paved Parking Areas

Green = All Unpaved Parking Areas

Red text denotes approx. mileage

Grey = Paved Routes, DCV not Driven

Black = State, Local or Private non-NPS Routes

■ = Concession Route Flag ON

*Unpaved route data was obtained from NPS and was not inventoried by the Road Inventory Program (RIP).

LIHO

LINCOLN HOME NATIONAL HISTORIC SITE

Asset LIHO-0903ZZ Subcomponent Breakdown

Rte. No.	FMSS No.	Cycle Collected	Route Name	From	To	Concess Route	Func. Class	Paved Miles	Un-Paved Miles	Total Route Length	Manual Rated SQ/FT
0903Z	63948	5	SHUTT HOUSE SOUTH PARKING	ADJACENT TO ROUTE 0400 (WEST ALLEY) ON RIGHT			0.00	0.00	0.00	691	
0904Z	63948	5	SHUTT HOUSE NORTH PARKING	ADJACENT TO ROUTE 0400 (WEST ALLEY) ON RIGHT			0.00	0.00	0.00	618	

Asset LIHO-0905ZZ Subcomponent Breakdown

Rte. No.	FMSS No.	Cycle Collected	Route Name	From	To	Concess Route	Func. Class	Paved Miles	Un-Paved Miles	Total Route Length	Manual Rated SQ/FT
0905AZ	63950	5	MILLER HOUSE PARKING A	ADJACENT TO ROUTE 0400 (WEST ALLEY) ON RIGHT			0.00	0.00	0.00	637	
0905BZ	63950	5	MILLER HOUSE PARKING B	ADJACENT TO ROUTE 0400 (WEST ALLEY) ON RIGHT			0.00	0.00	0.00	1,000	

ROUTE IDENTIFICATION CHANGES TO PAVED ROUTES FROM PREVIOUS CYCLE - LIHO

ROUTES MODIFIED FROM PREVIOUS INVENTORY:			
Route #	Route Name	Type of Modification	Comments
0900ZZ	BUS AND VISITOR CENTER BACK PARKING AREAS	SQ FEET CHANGE	ADDITIONAL AREA OF PARKING ADDED IN CYCLE 5 INCREASED SQ FEET.
0901	VISITOR PARKING	SQ FEET CHANGE	GPS RECOLLECTED TO SHOW CHANGES TO THE PARKING LOT SHAPE.
0902	STUVE PARKING AREA	SQ FEET CHANGE	GPS RECOLLECTED TO ACCURATELY SHOW THE PARKING LOT SHAPE. NAME CHANGED FROM "MAINTENANCE AREA PARKING".
0906	ROBINSON HOUSE PARKING	SQ FEET CHANGE	GPS RECOLLECTED TO ACCURATELY SHOW THE PARKING LOT SHAPE.
OTHER CHANGES FROM PREVIOUS INVENTORY:			
Route #	Route Name	Type of Change	Comments
0403ZZ	JACKSON STREET AREAS	ROUTES COMBINED	CYCLE 3 ROUTES 0403, 0910A, AND 0910B COMBINED INTO 0403ZZ IN CYCLE 5.
0903ZZ	SHUTT HOUSE PARKING AREAS	ROUTES COMBINED	CYCLE 3 ROUTES 0903 AND 0904 WERE COMBINED INTO 0903ZZ IN CYCLE 5.
0905ZZ	MILLER HOUSE PARKING AREAS	ROUTES COMBINED	CYCLE 3 ROUTES 0905A AND 0905B WERE COMBINED INTO 0905ZZ IN CYCLE 5.
0908	NORTH EAST PARKING AREA	OTHER	NAME CHANGED FROM "LINCOLN HOME PARKING".
0909	STORAGE PARKING AREA	OTHER	NAME CHANGED FROM "MORSE HOUSE PARKING".

Section 3

Park Summary Information



Lincoln Home National Historic Site



Federal Lands Highway
Road Inventory Program

Note: This park is classified as a Small Park. No Data Collection Vehicle routes existed in this park at the time of data collection. Therefore, there is no data to report for this section.

Section 4

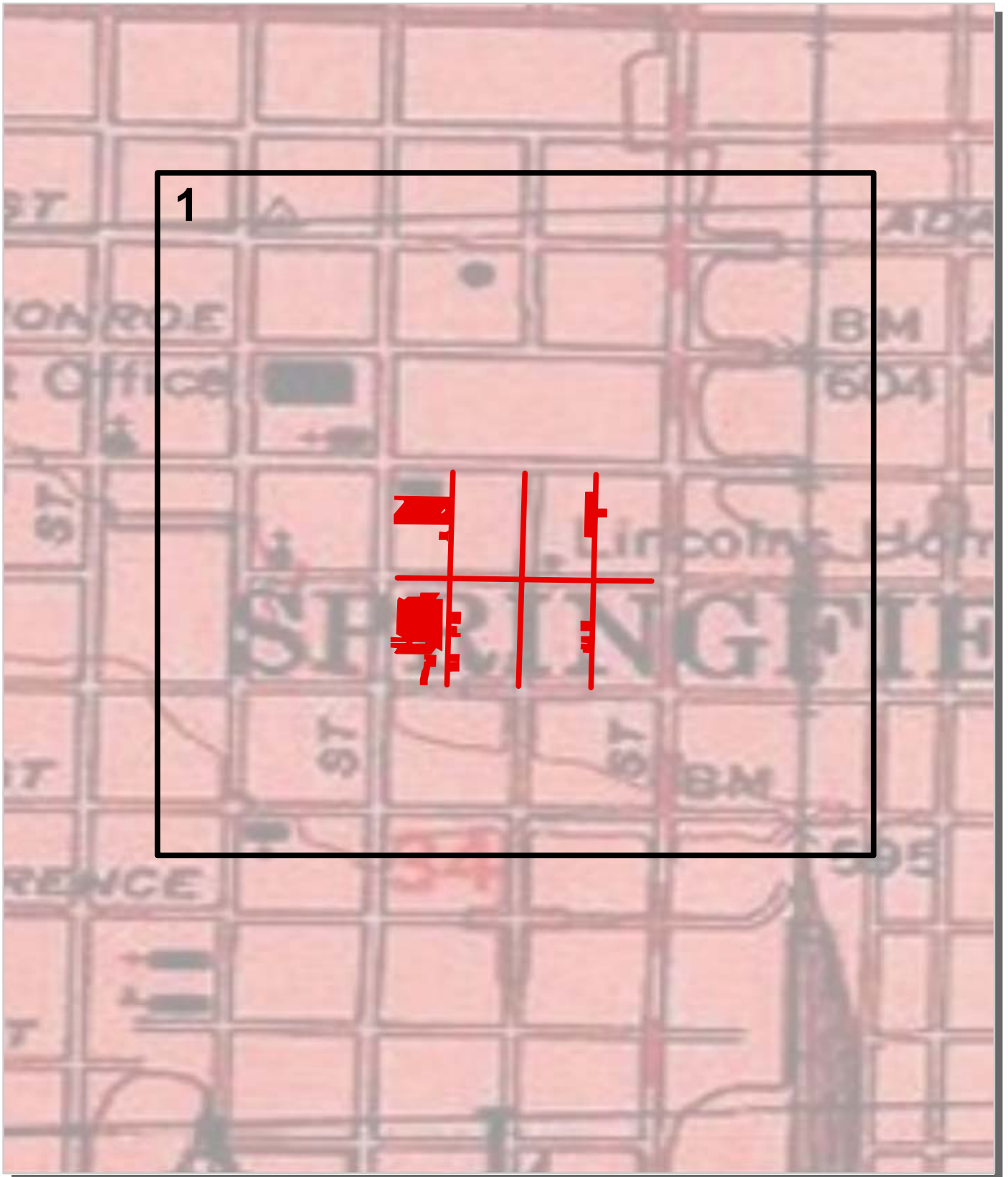
Park Route Location Maps



Lincoln Home National Historic Site



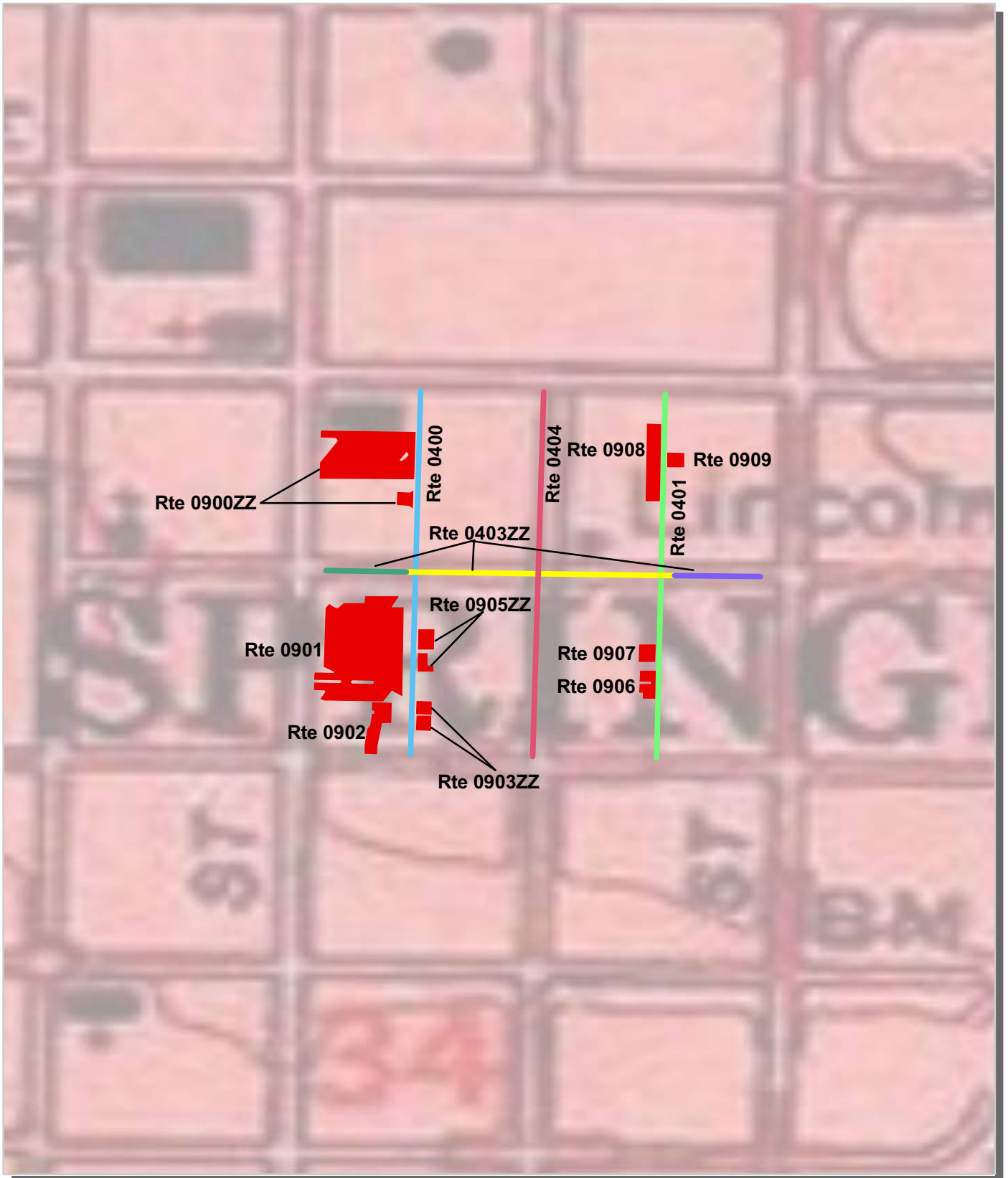
Lincoln Home National Historic Site
Route Location Map
Key Map



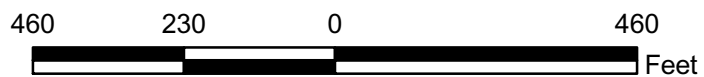
— Cycle 5 Collected Routes



Lincoln Home National Historic Site
Route Location Map
Area 1



Unique colors used to differentiate routes



Section 5
Paved Route
Condition Rating Sheets



Lincoln Home National Historic Site



Note: This park is classified as a Small Park. No Data Collection Vehicle routes existed in this park at the time of data collection. Therefore, there is no data to report for this section.

Section 6
Manually Rated Paved Route
Condition Rating Sheets



Lincoln Home National Historic Site



Federal Lands Highway
Road Inventory Program

LINCOLN HOME NATIONAL HISTORIC SITE

Route 0400

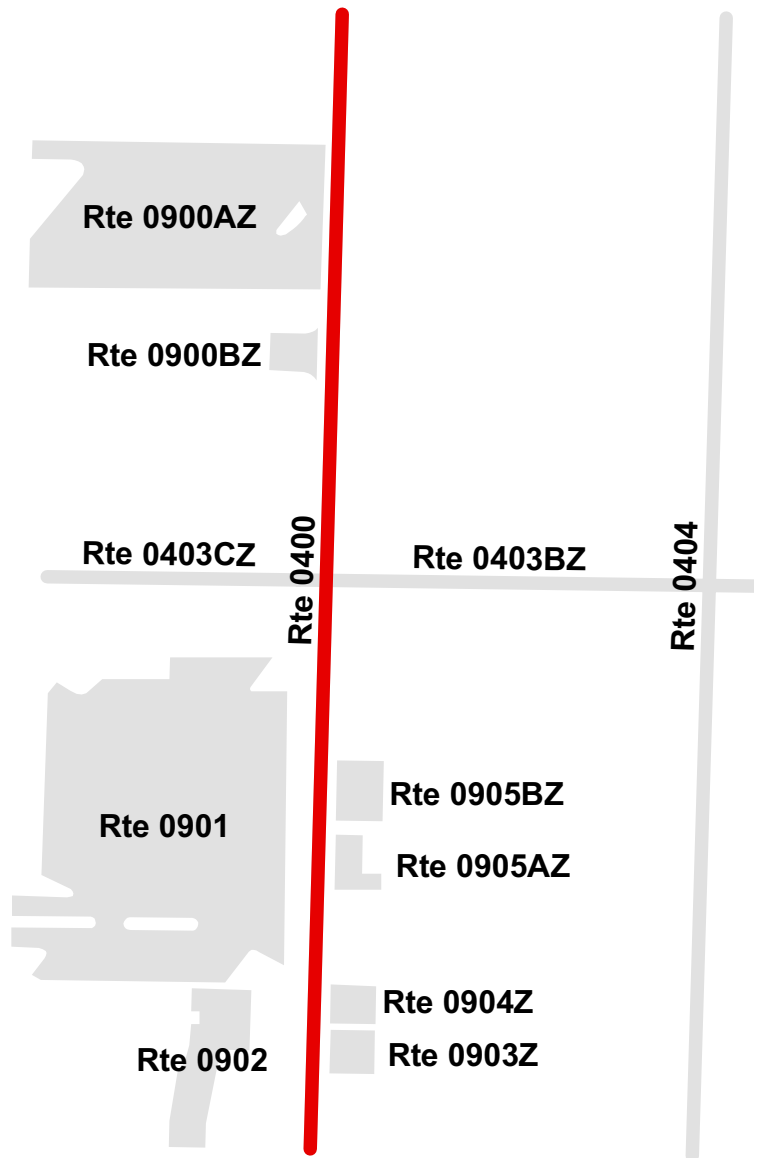
WEST ALLEY

FROM EAST EDWARDS STREET
TO EAST CAPITOL AVENUE

Route Number	Public / NonPublic	Date Visited	Area (sq ft)	Lane Miles *	Paved Length (mi)	Paved Width (ft)
0400	NONPUBLIC	4/26/2012	12,103	0.21	0.15	15.7
Culverts	Drop Inlets	Gates	Curb & Gutter	Curb	PCR	Surface Type
0	0	9	NO CURB AND GUTTER	CONCRETE CURB	NC/-1	AS

* Lane miles are based on 11' lane widths

NOTE: Pavement condition unable to be assessed due to gravel covering the paved surface



LINCOLN HOME NATIONAL HISTORIC SITE

Route 0401

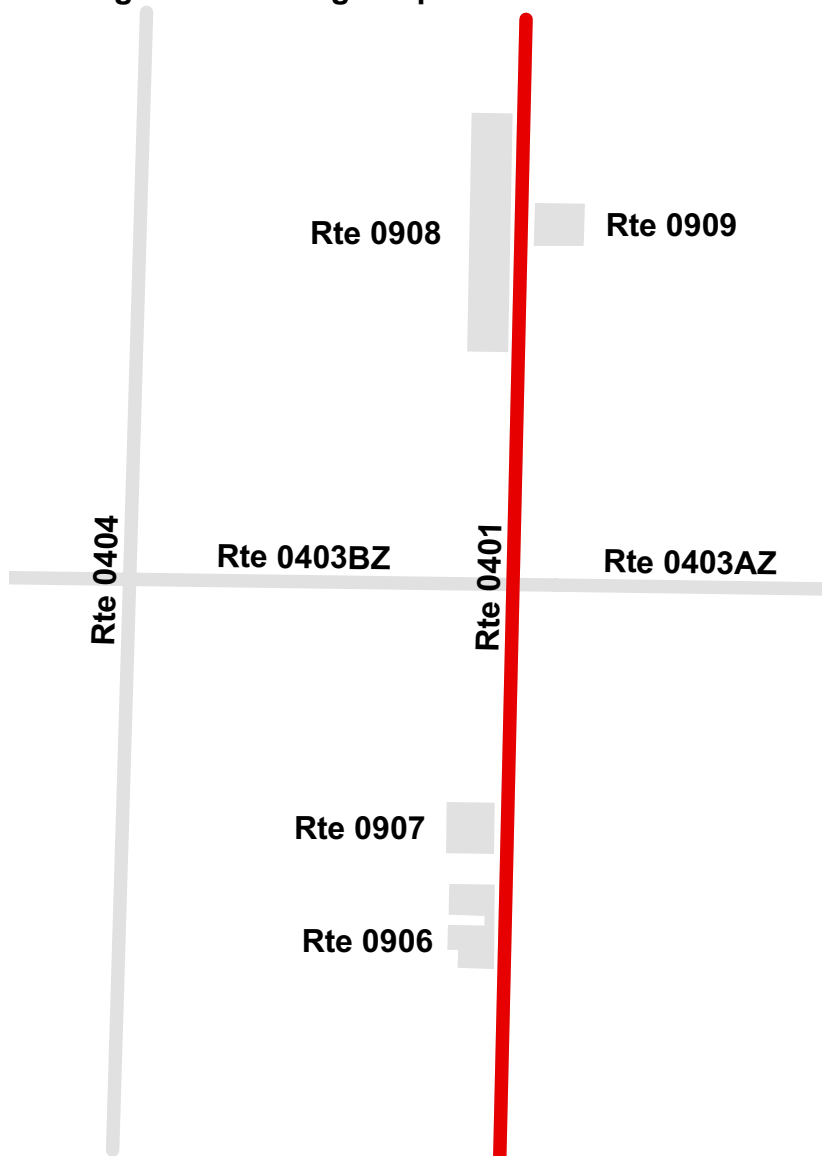
EAST ALLEY

FROM EAST CAPITOL AVENUE
TO EAST EDWARDS STREET

Route Number	Public / NonPublic	Date Visited	Area (sq ft)	Lane Miles *	Paved Length (mi)	Paved Width (ft)
0401	NONPUBLIC	4/26/2012	9,636	0.17	0.15	12.5
Culverts	Drop Inlets	Gates	Curb & Gutter	Curb	PCR	Surface Type
0	0	7	NO CURB AND GUTTER	NO CURB	NC/-1	AS

* Lane miles are based on 11' lane widths

NOTE: Pavement condition unable to be assessed due to gravel covering the paved surface



LINCOLN HOME NATIONAL HISTORIC SITE

Route 0403ZZ

JACKSON STREET AREAS

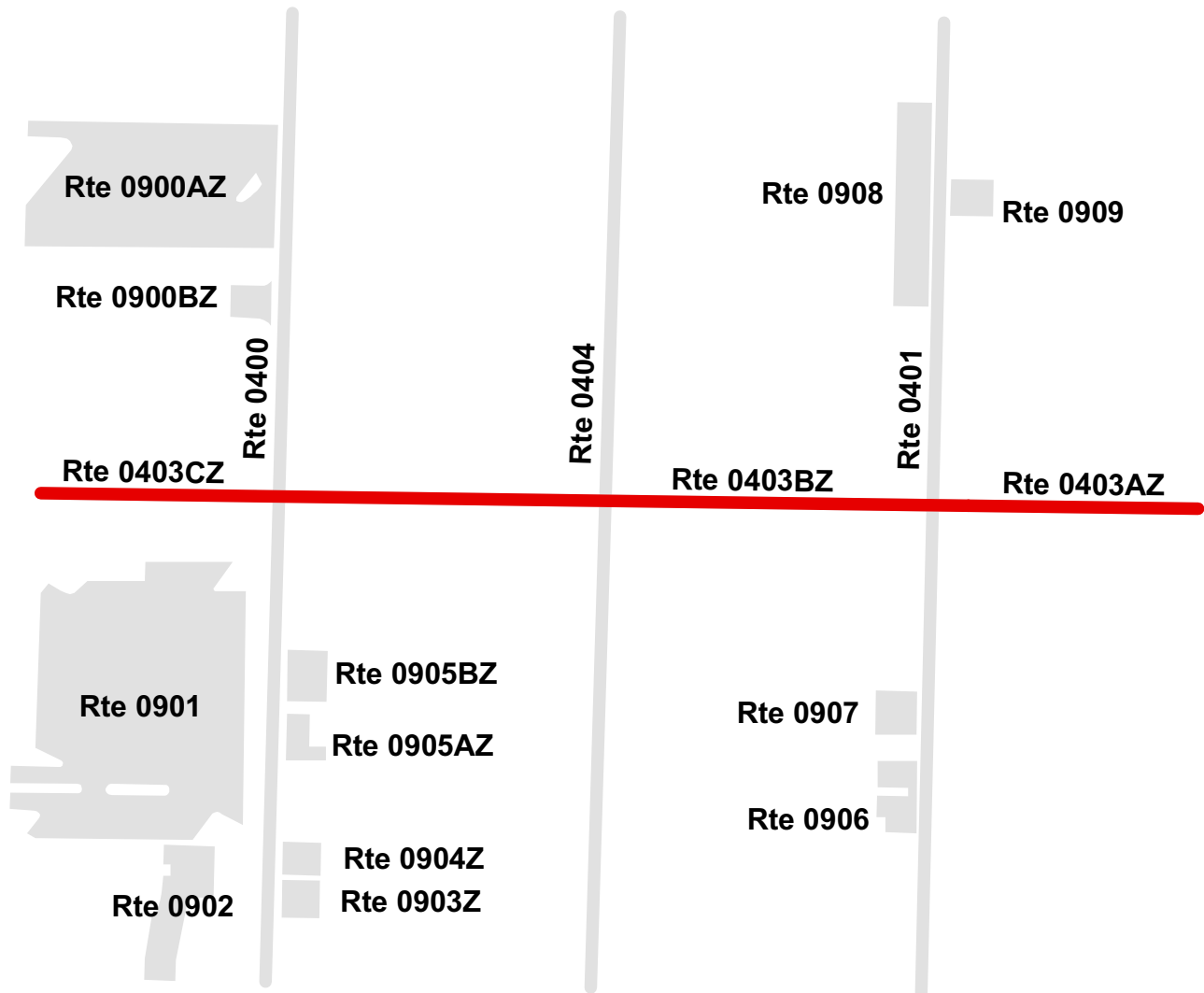
FROM SOUTH 9TH STREET

TO SOUTH 7TH STREET

Summary Record

Route Number	Public / NonPublic	Date Visited	Area (sq ft)	Lane Miles *	Paved Length (mi)	Paved Width (ft)
0403ZZ	NONPUBLIC	4/26/2012	20,671	0.36	0.14	29
Culverts	Drop Inlets	Gates	Curb & Gutter	Curb	PCR	Surface Type
2	8	0	NO CURB AND GUTTER	CONCRETE & WOOD	SUMMARY/-1	AS

* Lane miles are based on 11' lane widths



LINCOLN HOME NATIONAL HISTORIC SITE

Route 0403AZ

JACKSON STREET COBBLESTONE AREA (EAST END)

FROM SOUTH 9TH STREET

TO BEGINNING OF ROUTE 0403BZ (JACKSON STREET)

Subcomponent Record

Route Number	Public / NonPublic	Date Visited	Area (sq ft)	Lane Miles *	Paved Length (mi)	Paved Width (ft)
0403AZ	NONPUBLIC	4/26/2012	4,134	0.07	0.03	29
Culverts	Drop Inlets	Gates	Curb & Gutter	Curb	PCR	Surface Type
2	0	0	NO CURB AND GUTTER	CONCRETE CURB	GOOD/90	BR

* Lane miles are based on 11' lane widths



LINCOLN HOME NATIONAL HISTORIC SITE

Route 0403BZ

JACKSON STREET

FROM END OF ROUTE 0403AZ (JACKSON STREET COBBLESTONE AREA (EAST END))
TO BEGINNING OF ROUTE 0403CZ (JACKSON STREET COBBLESTONE AREA (WEST END))

Subcomponent Record

Route Number	Public / NonPublic	Date Visited	Area (sq ft)	Lane Miles *	Paved Length (mi)	Paved Width (ft)
0403BZ	NONPUBLIC	4/26/2012	12,709	0.22	0.08	29
Culverts	Drop Inlets	Gates	Curb & Gutter	Curb	PCR	Surface Type
0	4	0	NO CURB AND GUTTER	WOOD CURB	NC/-1	AS

* Lane miles are based on 11' lane widths

NOTE: Pavement condition unable to be assessed due to gravel covering the paved surface



LINCOLN HOME NATIONAL HISTORIC SITE

Route 0403CZ

JACKSON STREET COBBLESTONE AREA (WEST END)

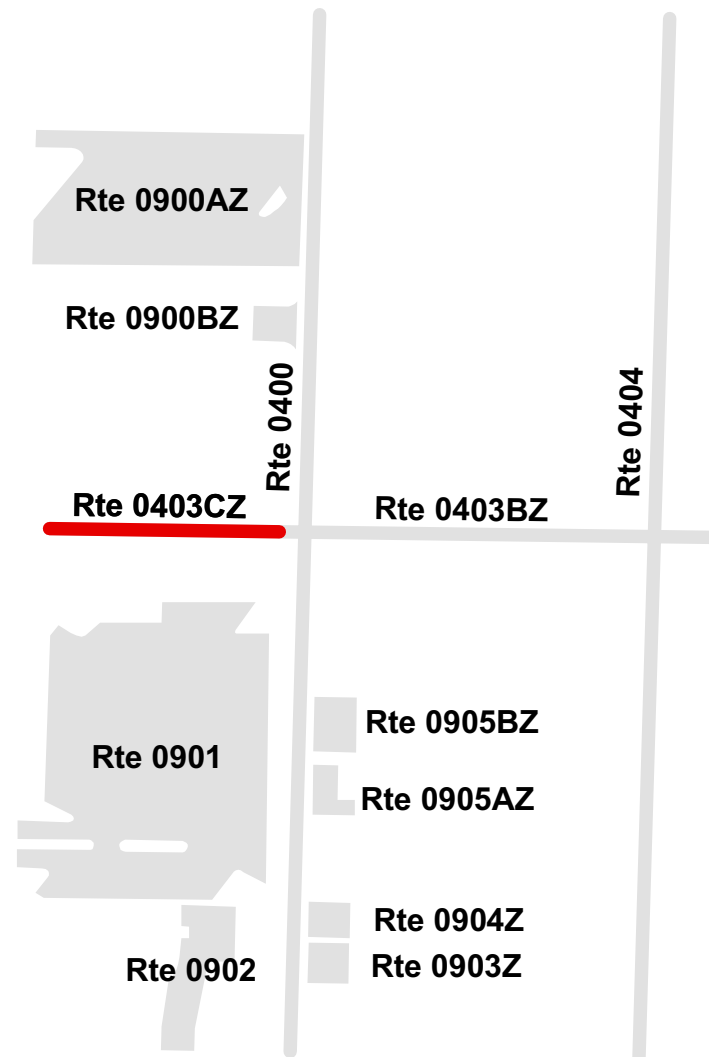
FROM END OF ROUTE 0403BZ (JACKSON STREET)

TO SOUTH 7TH STREET

Subcomponent Record

Route Number	Public / NonPublic	Date Visited	Area (sq ft)	Lane Miles *	Paved Length (mi)	Paved Width (ft)
0403CZ	NONPUBLIC	4/26/2012	3,828	0.07	0.03	29
Culverts	Drop Inlets	Gates	Curb & Gutter	Curb	PCR	Surface Type
0	4	0	NO CURB AND GUTTER	CONCRETE CURB	GOOD/90	BR

* Lane miles are based on 11' lane widths



LINCOLN HOME NATIONAL HISTORIC SITE

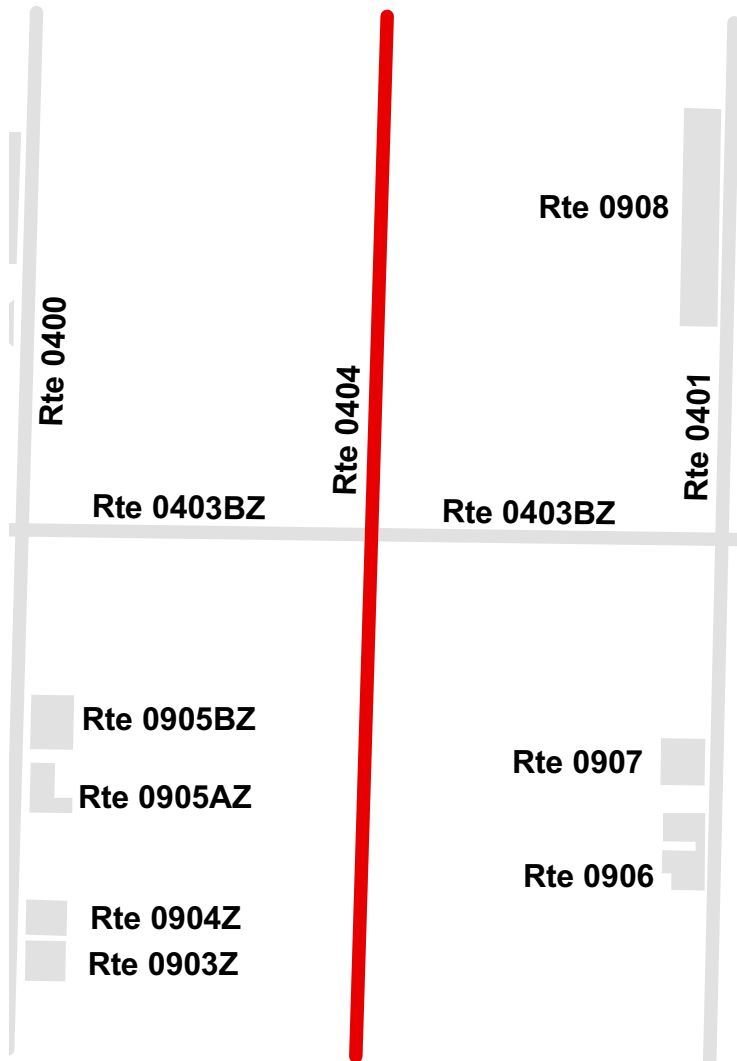
Route 0404

EIGHTH STREET
FROM EAST CAPITOL AVENUE
TO EAST EDWARDS STREET

Route Number	Public / NonPublic	Date Visited	Area (sq ft)	Lane Miles *	Paved Length (mi)	Paved Width (ft)
0404	NONPUBLIC	4/26/2012	29,679	0.51	0.15	38.5
Culverts	Drop Inlets	Gates	Curb & Gutter	Curb	PCR	Surface Type
0	6	0	NO CURB AND GUTTER	WOOD CURB	NC/-1	AS

* Lane miles are based on 11' lane widths

NOTE: Pavement condition unable to be assessed due to gravel covering the paved surface



Section 7

Parking Area

Condition Rating Sheets



Lincoln Home National Historic Site



LINCOLN HOME NATIONAL HISTORIC SITE

Route 0900ZZ

BUS AND VISITOR CENTER BACK PARKING AREAS
FROM SOUTH 7TH STREET AND ROUTE 0400 (WEST ALLEY)
TO PARKING

Summary Record

Route Number	Public / NonPublic	Date Visited	Area (sq ft)	Lane Miles *	Surface Type
0900ZZ	NONPUBLIC	4/26/2012	14,834	0.00	AS
Culverts	Drop Inlets	Gates	Curb & Gutter	Curb	PCR
0	0	2	CONCRETE CURB AND GUTTER	CONCRETE CURB	SUMMARY/89

* Lane miles are based on 11' lane widths



LINCOLN HOME NATIONAL HISTORIC SITE

Route 0900AZ

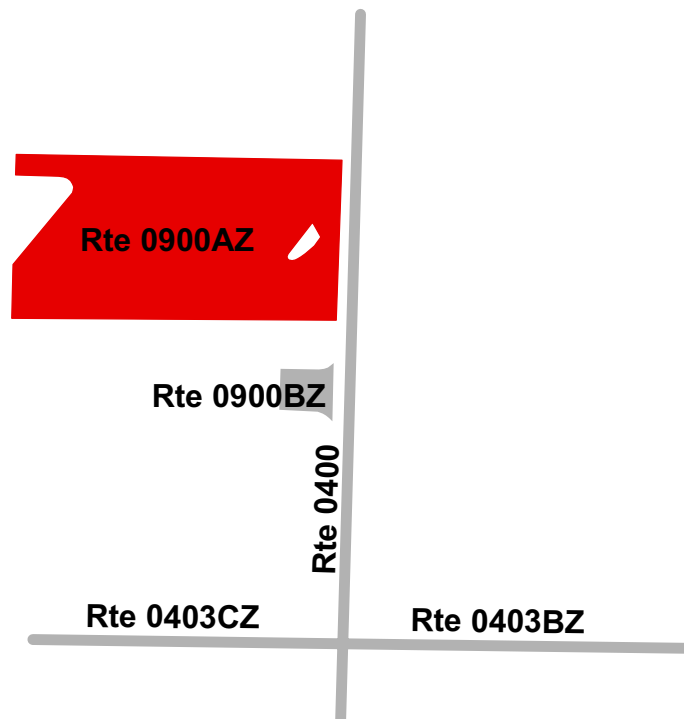
BUS PARKING

FROM SOUTH 7TH STREET
TO ROUTE 0400 (WEST ALLEY)

Subcomponent Record

Route Number	Public / NonPublic	Date Visited	Area (sq ft)	Lane Miles *	Surface Type
0900AZ	NONPUBLIC	4/26/2012	14,168	0.24	AS
Culverts	Drop Inlets	Gates	Curb & Gutter	Curb	PCR
0	0	2	CONCRETE CURB AND GUTTER	CONCRETE CURB	GOOD/90

* Lane miles are based on 11' lane widths



LINCOLN HOME NATIONAL HISTORIC SITE

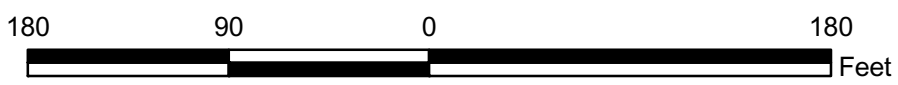
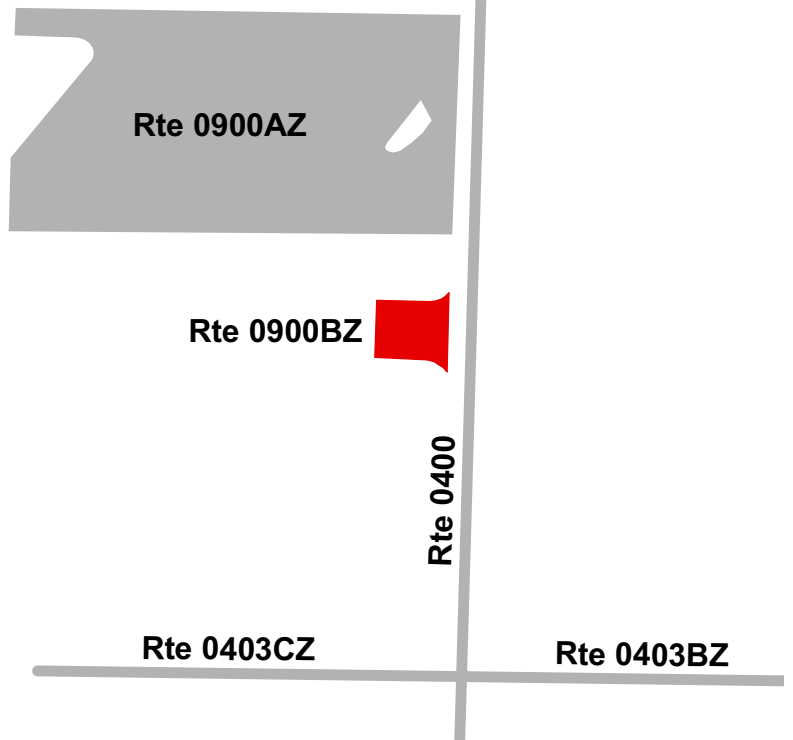
Route 0900BZ

VISITOR CENTER BACK PARKING
 ADJACENT TO ROUTE 0400 (WEST ALLEY) ON LEFT

Subcomponent Record

Route Number	Public / NonPublic	Date Visited	Area (sq ft)	Lane Miles *	Surface Type
0900BZ	NONPUBLIC	4/26/2012	666	0.01	CO
Culverts	Drop Inlets	Gates	Curb & Gutter	Curb	PCR
0	0	0	NO CURB AND GUTTER	CONCRETE CURB	FAIR/73

* Lane miles are based on 11' lane widths



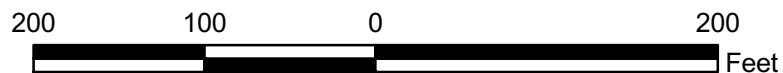
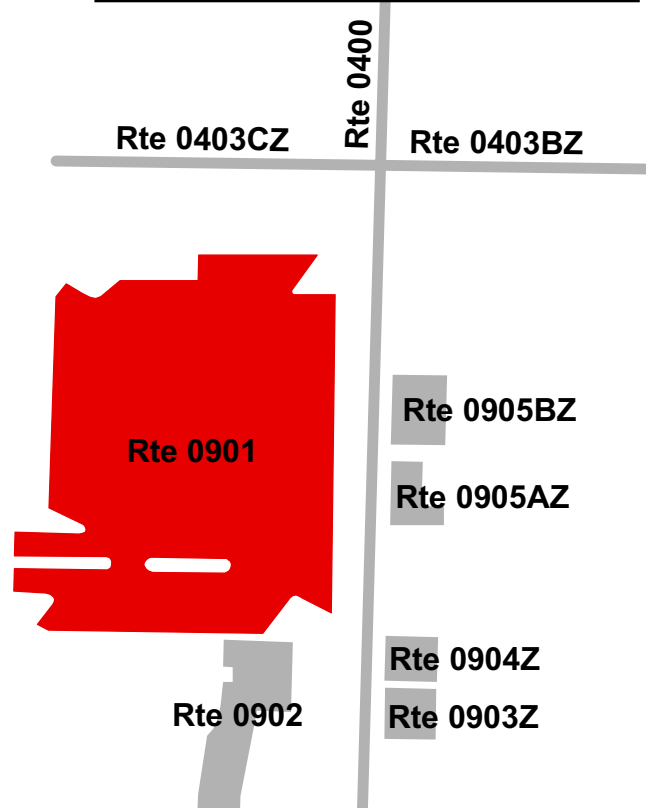
LINCOLN HOME NATIONAL HISTORIC SITE

Route 0901

VISITOR PARKING
FROM SOUTH 7TH STREET
TO SOUTH 7TH STREET

Route Number	Public / NonPublic	Date Visited	Area (sq ft)	Lane Miles *	Surface Type
0901	PUBLIC	4/26/2012	25,765	0.44	AS
Culverts	Drop Inlets	Gates	Curb & Gutter	Curb	PCR
0	1	2	CONCRETE CURB AND GUTTER	NO CURB	FAIR/73

* Lane miles are based on 11' lane widths



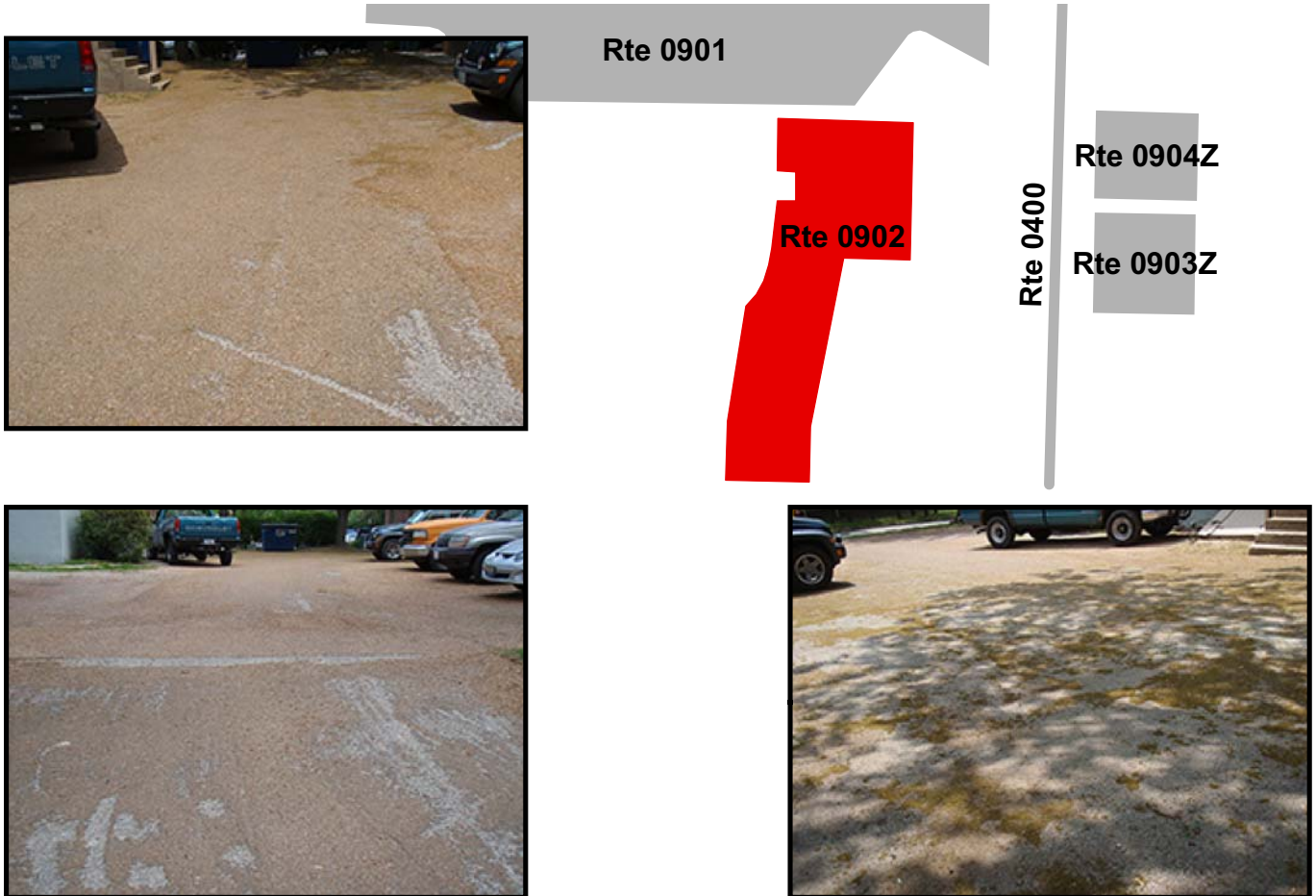
LINCOLN HOME NATIONAL HISTORIC SITE

Route 0902

STUVE PARKING AREA
FROM EAST EDWARDS STREET
TO PARKING

Route Number	Public / NonPublic	Date Visited	Area (sq ft)	Lane Miles *	Surface Type
0902	NONPUBLIC	4/26/2012	2,522	0.04	AS
Culverts	Drop Inlets	Gates	Curb & Gutter	Curb	PCR
0	0	0	NO CURB AND GUTTER	NO CURB	FAIR/73

* Lane miles are based on 11' lane widths



LINCOLN HOME NATIONAL HISTORIC SITE

Route 0903ZZ

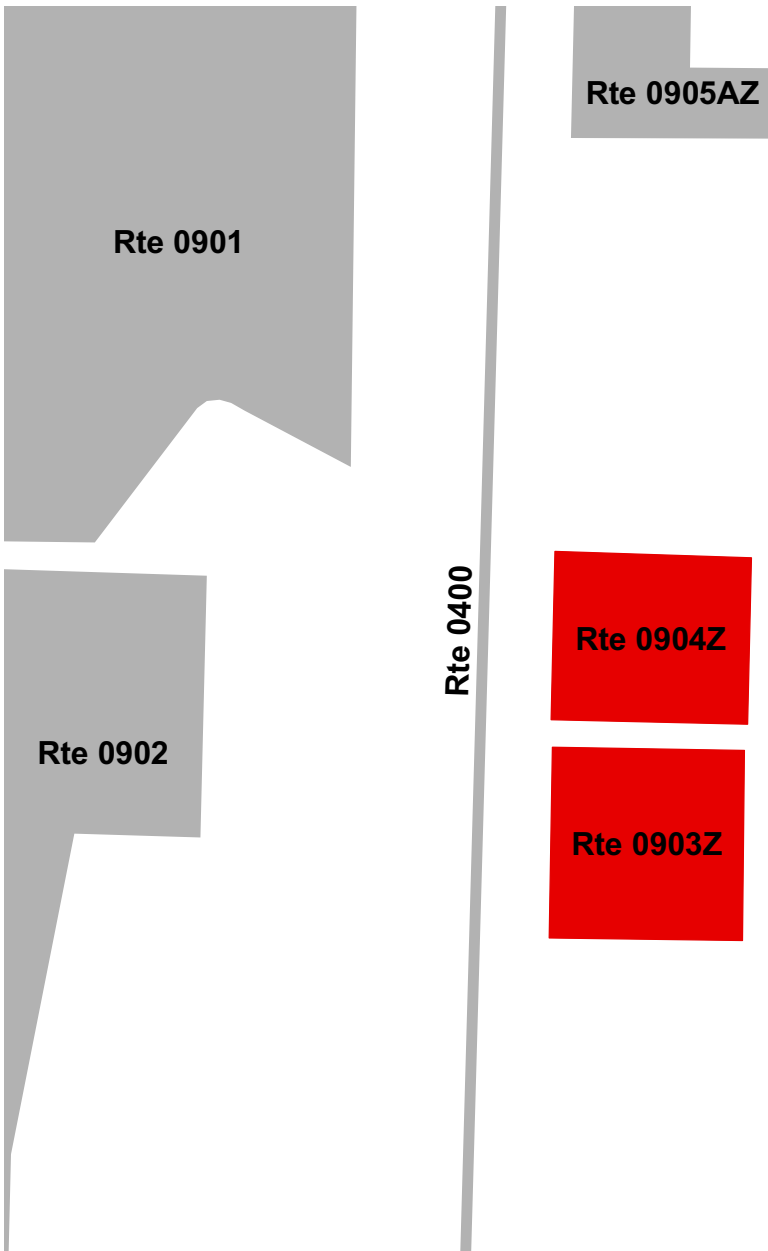
SHUTT HOUSE PARKING AREAS

ADJACENT TO ROUTE 0400 (WEST ALLEY) ON RIGHT

Summary Record

Route Number	Public / NonPublic	Date Visited	Area (sq ft)	Lane Miles *	Surface Type
0903ZZ	NONPUBLIC	4/26/2012	1,309	0.02	AS
Culverts	Drop Inlets	Gates	Curb & Gutter	Curb	PCR
0	0	0	NO CURB AND GUTTER	NO CURB	SUMMARY/82

* Lane miles are based on 11' lane widths



LINCOLN HOME NATIONAL HISTORIC SITE

Route 0903Z

SHUTT HOUSE SOUTH PARKING

ADJACENT TO ROUTE 0400 (WEST ALLEY) ON RIGHT

Subcomponent Record

Route Number	Public / NonPublic	Date Visited	Area (sq ft)	Lane Miles *	Surface Type
0903Z	NONPUBLIC	4/26/2012	691	0.01	AS
Culverts	Drop Inlets	Gates	Curb & Gutter	Curb	PCR
0	0	0	NO CURB AND GUTTER	NO CURB	GOOD/90

* Lane miles are based on 11' lane widths



Rte 0400

Rte 0904Z

Rte 0903Z



LINCOLN HOME NATIONAL HISTORIC SITE

Route 0904Z

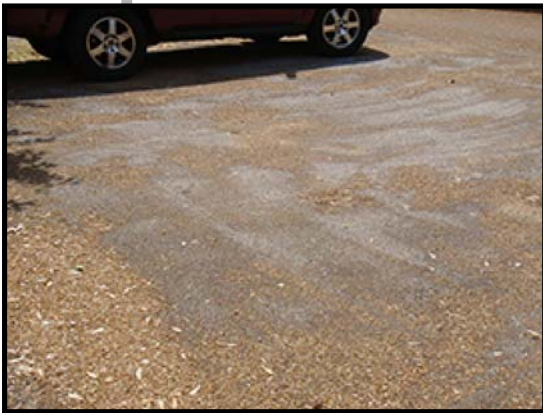
SHUTT HOUSE NORTH PARKING

ADJACENT TO ROUTE 0400 (WEST ALLEY) ON RIGHT

Subcomponent Record

Route Number	Public / NonPublic	Date Visited	Area (sq ft)	Lane Miles *	Surface Type
0904Z	NONPUBLIC	4/26/2012	618	0.01	AS
Culverts	Drop Inlets	Gates	Curb & Gutter	Curb	PCR
0	0	0	NO CURB AND GUTTER	NO CURB	FAIR/73

* Lane miles are based on 11' lane widths



Rte 0400



Rte 0904Z



Rte 0903Z



LINCOLN HOME NATIONAL HISTORIC SITE

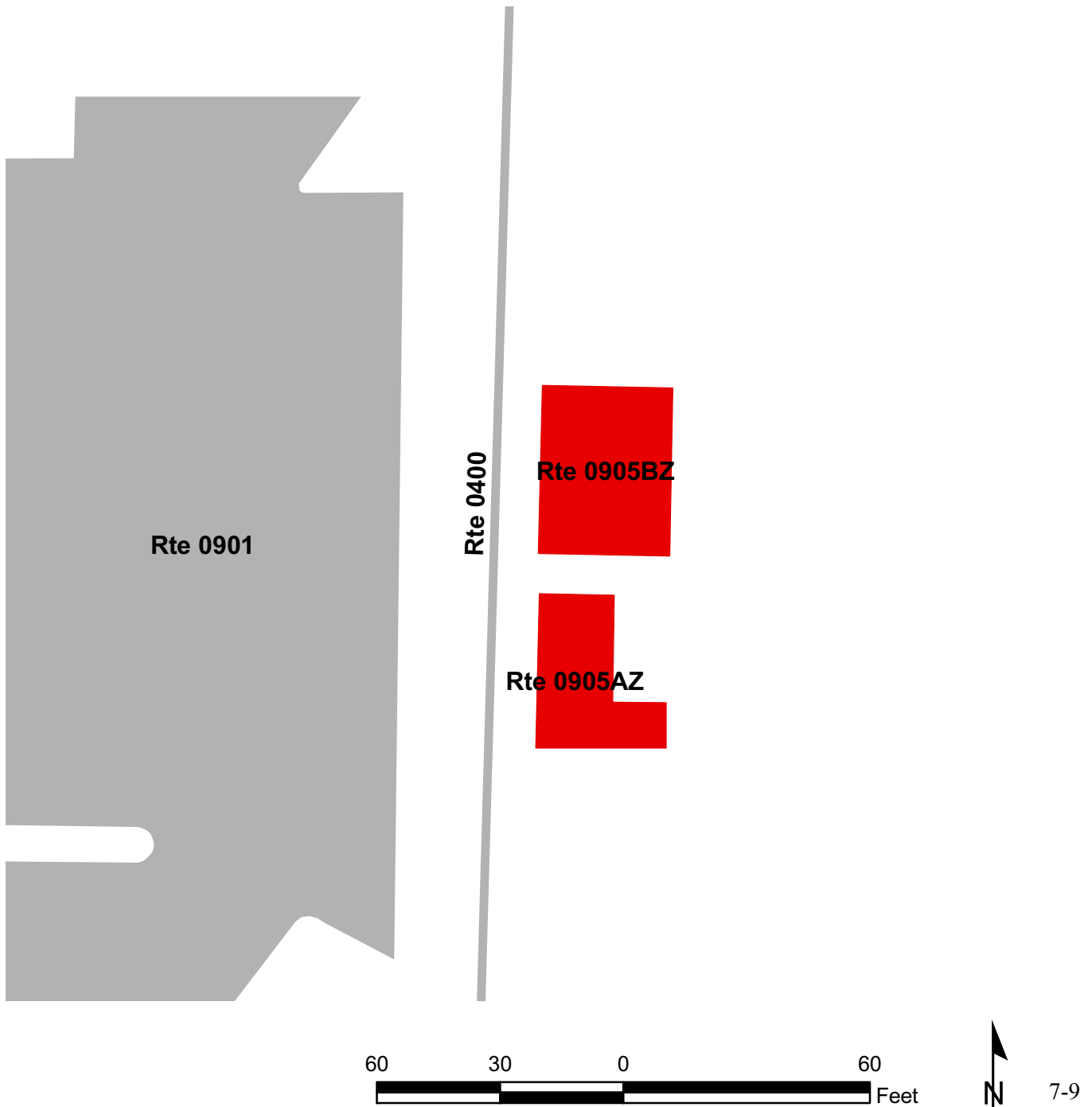
Route 0905ZZ

MILLER HOUSE PARKING AREAS
ADJACENT TO ROUTE 0400 (WEST ALLEY) ON RIGHT

Summary Record

Route Number	Public / NonPublic	Date Visited	Area (sq ft)	Lane Miles *	Surface Type
0905ZZ	NONPUBLIC	4/26/2012	1,637	0.03	AS
Culverts	Drop Inlets	Gates	Curb & Gutter	Curb	PCR
0	0	1	NO CURB AND GUTTER	NO CURB	SUMMARY/73

* Lane miles are based on 11' lane widths



LINCOLN HOME NATIONAL HISTORIC SITE

Route 0905AZ

MILLER HOUSE PARKING A
 ADJACENT TO ROUTE 0400 (WEST ALLEY) ON RIGHT

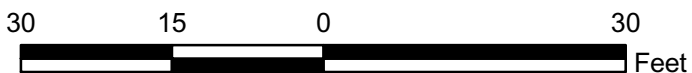
Subcomponent Record

Route Number	Public / NonPublic	Date Visited	Area (sq ft)	Lane Miles *	Surface Type
0905AZ	NONPUBLIC	4/26/2012	637	0.01	AS
Culverts	Drop Inlets	Gates	Curb & Gutter	Curb	PCR
0	0	0	NO CURB AND GUTTER	NO CURB	FAIR/73

* Lane miles are based on 11' lane widths



Rte 0400



LINCOLN HOME NATIONAL HISTORIC SITE

Route 0905BZ

MILLER HOUSE PARKING B

ADJACENT TO ROUTE 0400 (WEST ALLEY) ON RIGHT

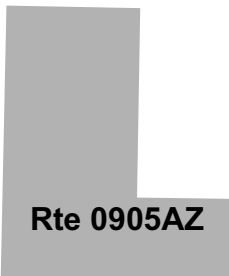
Subcomponent Record

Route Number	Public / NonPublic	Date Visited	Area (sq ft)	Lane Miles *	Surface Type
0905BZ	NONPUBLIC	4/26/2012	1,000	0.02	AS
Culverts	Drop Inlets	Gates	Curb & Gutter	Curb	PCR
0	0	1	NO CURB AND GUTTER	NO CURB	FAIR/73

* Lane miles are based on 11' lane widths



Rte 0400



LINCOLN HOME NATIONAL HISTORIC SITE

Route 0906

ROBINSON HOUSE PARKING

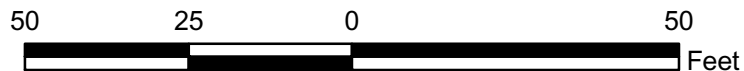
ADJACENT TO ROUTE 0401 (EAST ALLEY) ON RIGHT

Route Number	Public / NonPublic	Date Visited	Area (sq ft)	Lane Miles *	Surface Type
0906	NONPUBLIC	4/26/2012	1,194	0.02	AS
Culverts	Drop Inlets	Gates	Curb & Gutter	Curb	PCR
0	0	1	NO CURB AND GUTTER	NO CURB	GOOD/90

* Lane miles are based on 11' lane widths



Rte 0401



LINCOLN HOME NATIONAL HISTORIC SITE

Route 0907

COOK HOUSE PARKING

ADJACENT TO ROUTE 0401 (EAST ALLEY) ON RIGHT

Route Number	Public / NonPublic	Date Visited	Area (sq ft)	Lane Miles *	Surface Type
0907	NONPUBLIC	4/26/2012	877	0.02	AS
Culverts	Drop Inlets	Gates	Curb & Gutter	Curb	PCR
0	0	1	NO CURB AND GUTTER	NO CURB	GOOD/90

* Lane miles are based on 11' lane widths



Rte 0401



LINCOLN HOME NATIONAL HISTORIC SITE

Route 0908

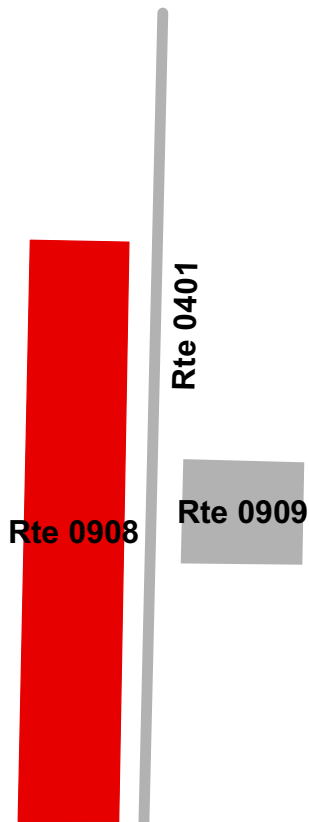
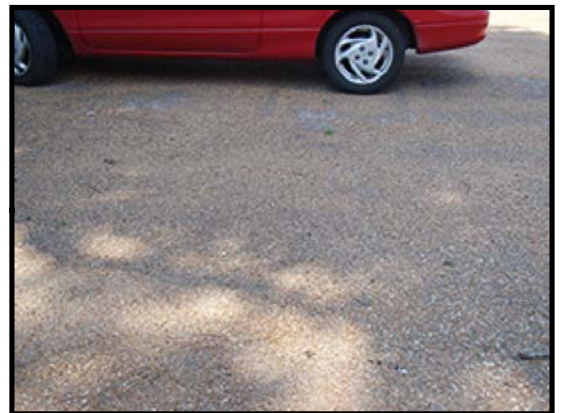
NORTH EAST PARKING AREA

ADJACENT TO ROUTE 0401 (EAST ALLEY) ON RIGHT

Route Number	Public / NonPublic	Date Visited	Area (sq ft)	Lane Miles *	Surface Type
0908	NONPUBLIC	4/26/2012	3,480	0.06	AS
Culverts	Drop Inlets	Gates	Curb & Gutter	Curb	PCR
0	0	1	NO CURB AND GUTTER	NO CURB	NC/-1

* Lane miles are based on 11' lane widths

NOTE: Pavement condition unable to be assessed due to gravel covering the paved surface.



LINCOLN HOME NATIONAL HISTORIC SITE

Route 0909

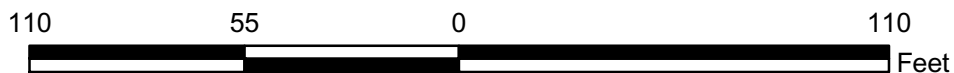
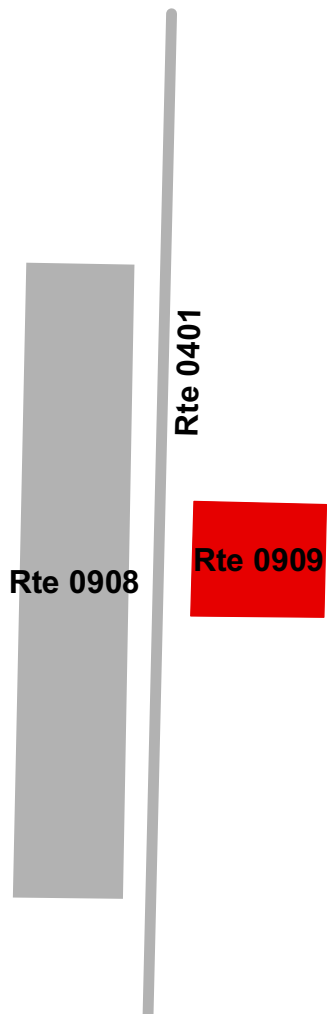
STORAGE PARKING AREA

ADJACENT TO ROUTE 0401 (EAST ALLEY) ON LEFT

Route Number	Public / NonPublic	Date Visited	Area (sq ft)	Lane Miles *	Surface Type
0909	NONPUBLIC	4/26/2012	756	0.01	AS
Culverts	Drop Inlets	Gates	Curb & Gutter	Curb	PCR
0	0	1	NO CURB AND GUTTER	NO CURB	NC/-1

* Lane miles are based on 11' lane widths

NOTE: Pavement condition unable to be assessed due to gravel covering the paved surface



Section 8
Parkwide/Route
Maintenance Features Summaries



Lincoln Home National Historic Site



LIHO: PARKWIDE / ROUTE MAINTENANCE FEATURES SUMMARY

Note: There are no Data Collection Vehicle routes in this park. However, counts were made of the features listed in the table below.

Route Number	Culverts	Drop Inlets	Gates	Curb	Curb & Gutter
0400	0	0	9	CONCRETE CURB	NO CURB AND GUTTER
0401	0	0	7	NO CURB	NO CURB AND GUTTER
0403AZ	2	0	0	CONCRETE CURB	NO CURB AND GUTTER
0403BZ	0	4	0	WOOD CURB	NO CURB AND GUTTER
0403CZ	0	4	0	CONCRETE CURB	NO CURB AND GUTTER
0404	0	6	0	WOOD CURB	NO CURB AND GUTTER
0900AZ	0	0	2	CONCRETE CURB	CONCRETE CURB AND GUTTER
0900BZ	0	0	0	CONCRETE CURB	NO CURB AND GUTTER
0901	0	1	2	NO CURB	CONCRETE CURB AND GUTTER
0902	0	0	0	NO CURB	NO CURB AND GUTTER
0903Z	0	0	0	NO CURB	NO CURB AND GUTTER
0904Z	0	0	0	NO CURB	NO CURB AND GUTTER
0905AZ	0	0	0	NO CURB	NO CURB AND GUTTER
0905BZ	0	0	1	NO CURB	NO CURB AND GUTTER
0906	0	0	1	NO CURB	NO CURB AND GUTTER
0907	0	0	1	NO CURB	NO CURB AND GUTTER
0908	0	0	1	NO CURB	NO CURB AND GUTTER
0909	0	0	1	NO CURB	NO CURB AND GUTTER
Totals	2	15	25		

NC = Not Collected

NO = This feature does not exist

Section 9
Route Maintenance Features
Road Logs



Lincoln Home National Historic Site



Note: This park is classified as a Small Park. No Data Collection Vehicle routes existed in this park at the time of data collection. Therefore, there is no data to report for this section.

Section 10 Appendix



Lincoln Home National Historic Site



GLOSSARY OF TERMS AND ABBREVIATIONS

<u>TERM OR ABBREVIATION</u>	<u>DESCRIPTION OR DEFINITION</u>
Excellent	Excellent rating with an index value of 97
Fair	Fair rating with an index value of 73
Func. Class	Functional Classification (see Route ID, Section 2)
Good	Good rating with an index value of 90
MRR	Manually Rated Route
MRL	Manually Rated Line
MRP	Manually Rated Polygon
N/A	Not Applicable
NC	Not Collected
PKG	Parking Area
Poor	Poor rating with an index value of 45

GPS on Manually Rated Roads (MRR)

Parking areas, some roads, and other paved areas that are not fully drivable with the RIP Data Collection Vehicle are collected manually by field technicians. GPS is collected for these routes using portable Trimble GPS backpack units.

Geodatabase – Background and Metadata

In addition to this park report, a *geodatabase* containing both tabular and spatial data specific to this park has been provided. All data disseminated in the preceding report has been obtained from the tables and fields within said geodatabase. The geodatabase can be referenced for tabular data via Microsoft Access or for both tabular and spatial data via ESRI's ArcGIS Suite of software which consists of; ArcMap, ArcCatalog and ArcExplorer. Consolidating the RIP data into one database creates a seamless relationship of tables and geographic data. It will allow RIP to facilitate easier updates and enhancements in the future.

A geodatabase can be thought of as simply a database containing spatial data. Many different tables are contained with the park's geodatabase. A complete and thorough description of the tables and fields contained within this geodatabase can be found in the *metadata*. The metadata is attached directly within the geodatabase and can be accessed via ESRI's ArcCatalog.