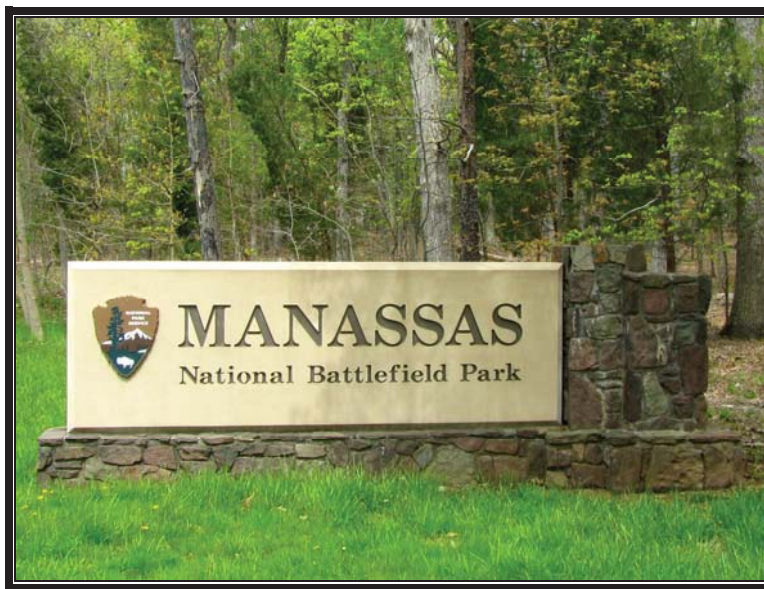




Federal Lands Highway Road Inventory Program

Road Inventory and Condition Assessment

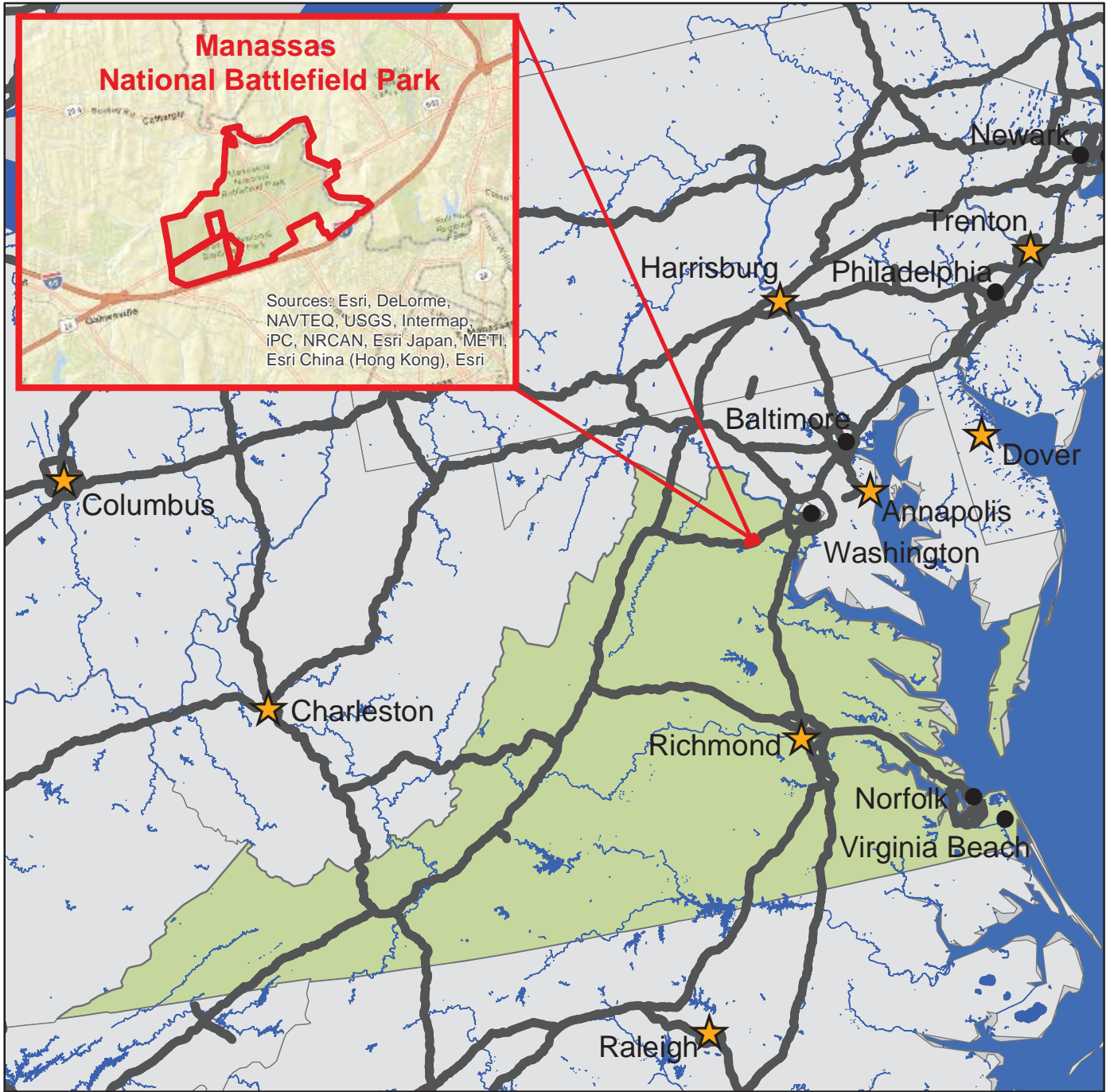


Manassas National Battlefield Park MANA

Cycle 5 Report

**Prepared By: Federal Highway Administration
Road Inventory Program (RIP)
Data Collected: 02/2013
Report Date: 07/2013**

Manassas National Battlefield Park in Virginia





DCV = Data Collection Vehicle

TABLE OF CONTENTS

<u>SECTION</u>	<u>PAGE</u>
1. INTRODUCTION	1 - 1
2. PARK ROUTE INVENTORY Route IDs, Subcomponents & Changes Report (As Applicable)	2 - 1
3. PARK SUMMARY INFORMATION Paved Route Miles and Percentages by Functional Class and PCR DCV Road Condition Summary Parkwide DCV Condition Summary	3 - 1 3 - 3 3 - 4
4. PARK ROUTE LOCATION MAPS Route Location Key Map Route Location Area Map Route Condition Key Map – PCR Mile by Mile Route Condition Area Map – PCR Mile by Mile	4 - 1 4 - 2 4 - 4 4 - 5
5. PAVED ROUTE CONDITION RATING SHEETS CRS Pages	5 - 1
6. MANUALLY RATED PAVED ROUTE CONDITION RATING SHEETS MRR Pages	6 - 1
7. PARKING AREA CONDITION RATING SHEETS Paved Parking Area Pages	7 - 1
8. PARKWIDE / ROUTE MAINTENANCE FEATURES SUMMARIES Parkwide Maintenance Features Summary DCV Route Maintenance Features Summary Structure List	8 - 1 8 - 2 8 - 3
9. ROUTE MAINTENANCE FEATURES ROAD LOGS Route Maintenance Features Road Logs	9 - 1
10. APPENDIX Explanation of Changes to the RIP Index Equations and Determination of PCR Explanation of the Excellent, Good, Fair and Poor Condition Descriptions Description of Rating System Surface Distresses Index Formulas Data Collection Vehicle Subsystems Geodatabase – Background and Metadata Glossary of Terms and Abbreviations	10 - 1 10 - 2 10 - 3 10 - 5 10 - 12 10 - 16 10 - 19 10 - 20

Section 1 Introduction



Manassas National Battlefield Park



Federal Lands Highway
Road Inventory Program

INTRODUCTION

The Federal Highway Administration, (FHWA), in the mid 1970s, was charged with the task of identifying surface condition deficiencies and corrective priorities on National Park Service (NPS) roads and parkways. Additionally, FHWA was tasked with establishing an integrated maintenance features inventory, locating features such as culverts, guardrails, and signs, among others, along NPS roads and parkways. As a result, in 1976 the NPS and FHWA entered into an MOA (Memorandum Of Agreement) which established the RIP (Road Inventory Program). This MOA was terminated and revised in 1980 to establish a new MOA aiming to update RIP data and develop a long-range program to improve and maintain NPS roads to designated condition standards and establish a maintenance management program.

The FHWA completed this initial phase of the RIP in the early 1980s. As a result of this effort, each NPS site included in the study received a RIP Report known as the “Brown Book” which included the information collected during this first RIP phase.

In the 1990s, the effort was again renewed to update and maintain the RIP data. By this time the computer age was upon us and a process was employed that relied heavily on electronic data collection and computer technology. A cyclical program was developed and the RIP completed two cycles of data collection from 1994 to 2001. Cycle 1, starting in 1994, was conducted in 44 “large parks” (parks containing 10 or more paved route miles). Cycle 2 began in 1997 and comprised 79 large parks and 5 small parks totaling 4,874 paved route miles. Each of these parks received a RIP Report known as the “Blue Book”. Cycle 3, from 2001 to 2004, was conducted in all parks, large and small, that contained any paved routes, including parking areas and, again, each park received a RIP Report and associated electronic files.

Cycle 4 was initiated in the spring of 2006 covering 86 large parks and several associated small parks consisting of 5,553 paved route miles and 6,232 paved parking areas. Data collection has been completed for Cycle 4 and all data has been delivered to the NPS.

In 2005, the FHWA began implementing the use of a Pavement Management System (PMS) to assist the NPS in prioritizing Pavement Maintenance and Rehabilitation activities. The PMS used by FHWA is the Highway Pavement Management Application (HPMA) and this software has the ability to store inventory and condition data from RIP and forecast future performance using prediction models. Outputs include performance and condition reports at the National, Regional, Park, or Route level. A regional prioritized list and optimization have been produced for most regions and the Federal Highway Deferred Maintenance is calculated via the HPMA.

In an effort to improve the accuracy of treatment recommendations and pavement condition descriptions, an extensive study was completed throughout 2010 that has resulted in changes to the RIP condition reporting method, specifically the distresses and indexes that comprise the Pavement Condition Rating (PCR). It was determined that a better representation of PCR could

be achieved by modifying the relative impact certain distresses would have on the overall rating. The changes that were implemented were endorsed by management at both the FHWA and NPS in October 2010. These changes will allow greater use of RIP and HPMA data for not simply condition data reporting, but also as a reliable tool for project identification and selection. Because of these changes, the PCR Condition ratings reported in Cycle 5 do not directly relate to the condition ratings reported in previous cycle RIP Reports. For more detailed information about the changes, see Section 3 and Section 10 in this RIP Report.

Cycle 5 has launched in the summer of 2010 and will again comprise all parks, large and small, that are served by paved roads and/or parking areas. For Cycle 5, the decision was made to collect condition data in large parks on Functional Class 1, 2, and 7 paved routes only, as well as any new routes that were previously not collected. In small parks, all paved routes and parking areas will be collected. As a result, this will include 81 large parks with 4,459 paved route miles and 231 small parks with 529 paved route miles and associated paved parking areas.

Since 1984, the Road Inventory Program has been funded through the Federal Lands Highway Park Roads and Parkways (PRP) Program. Currently, coordination of the RIP with FLH is under the NPS Washington Headquarters Park Facility Management Division. The FLH Washington office coordinates policy and prepares national reports and needs assessment studies for Congress.

In 1998, the Transportation Equity Act for the 21st Century (TEA-21) amended Title 23 U.S.C., and inserted Section 204(a)(6) requiring the FHWA and NPS, to develop by rule, a Pavement Management System (PMS) applied to park roads and parkways serving the National Park System.

FLH is responsible for the accuracy of all data presented in this report. Any questions or comments concerning the contents of this report should be directed to the national RIP Coordinator located in Sterling, Virginia.

Respectfully,

FHWA RIP Team

FHWA/Eastern Federal Lands
21400 Ridgetop Circle
Sterling, VA 20166
(703) 404-6371

FHWA/Central Federal Lands
12300 West Dakota Ave
Lakewood, CO 80228
(720) 963-3556

Section 2

Park Route Inventory



Manassas National Battlefield Park



Federal Lands Highway
Road Inventory Program

Cycle 5 NPS/RIP Route ID Report

Road Inventory Program 07/17/2013

(Numerical By Route #)

Shading Color Key:

Red text denotes approx. mileage

White = Paved Routes, DCV Driven

Yellow = Unpaved Routes, DCV not Driven

Blue = All Paved Parking Areas

Green = All Unpaved Parking Areas

Grey = Paved Routes, DCV not Driven

Black = State, Local or Private non-NPS Routes

█ = Concession Route Flag ON

*Unpaved route data was obtained from NPS and was not inventoried by the Road Inventory Program (RIP).

** DCV - Data Collection Vehicle NC - Not Collected

MANA

MANASSAS NATIONAL BATTLEFIELD PARK

Rte. No.	Cycle Collected	FMSS No.	Concession Route	Route Name	Route Description From To	Maint. District	Paved Miles	Un-Paved Miles	Total Route Length	Func. Class	Manual Rated SQ/FT	Surf. Type	Area Maps
0011	5	56967		SOUTH CHINN RIDGE ROAD	FROM ROUTE 0012 (NORTH CHINN RIDGE ROAD) TO ROUTE 0904 (SOUTH CHINN RIDGE PARKING)	N/A	0.18	0.00	0.18	1		AS	2
0012	5	56968		NORTH CHINN RIDGE ROAD	FROM ROUTE 5234 (STATE ROUTE 234 (SUDLEY ROAD)) TO ROUTE 5234 (STATE ROUTE 234 (SUDLEY ROAD))	N/A	1.20	0.00	1.20	1		AS	2
0014	5	56971		NEW YORK AVENUE	FROM ROUTE 5029 (U.S. HIGHWAY 29 (LEE HIGHWAY)) TO END OF LOOP	N/A	0.33	0.00	0.33	1		AS	1
0015	5	239990		BRAWNER FARM ACCESS ROAD	FROM ROUTE 5705A (STATE ROUTE 705 (PAGELAND LANE (NORTH))) TO END OF LOOP	N/A	0.42	0.00	0.42	1		AS	1
0401	NC	56977		COMPTON FIRE ROAD	FROM ROUTE 0904 (SOUTH CHINN RIDGE PARKING) TO ROUTE 5622 (STATE ROUTE 622 (FEATHERBED / GROVETON ROAD))	N/A	0.00	0.38	0.38	6		GR	
0403	NC	56975		ROBINSON HOUSE ROAD	FROM ROUTE 5029 (U.S. HIGHWAY 29 (LEE HIGHWAY)) TO END	N/A	0.00	0.11	0.11	5		GR	
0404	NC	81411		ROCK ROAD	FROM ROUTE 5029 (U.S. HIGHWAY 29 (LEE HIGHWAY)) TO ROUTE 5000 (BATTLVIEW PARKWAY)	N/A	0.00	1.50	1.50	5		GR	
0405	NC	56818		MULLIKEN DRIVEWAY	FROM ROUTE 0415 (VISITOR PROTECTION ACCESS ROAD) TO END	N/A	0.00	0.85	0.85	6		GR	
0410	NC	56849		PETERS HOUSE DRIVE	FROM FEATHERBED LANE TO END	N/A	0.00	0.15	0.15	5		GR	
0412	5	56820		QUARTERS 9 ACCESS ROAD	FROM ROUTE 5234 (STATE ROUTE 234 (SUDLEY ROAD)) TO END OF PAVEMENT	N/A	0.10	0.00	0.10	6	4,847	AS	2
0415	5	56826		VISITOR PROTECTION ACCESS ROAD	FROM ROUTE 5029 (U.S. HIGHWAY 29 (LEE HIGHWAY)) TO END OF LOOP	N/A	0.57	0.00	0.57	5		AS	2
0416	NC	89066		MEADOWVILLE ROAD	FROM ROUTE 5029 (U.S. HIGHWAY 29 (LEE HIGHWAY)) TO END	N/A	0.00	0.23	0.23	6		NV	
0492	NC	56973		HENRY HOUSE ROAD	FROM ROUTE 5234 (STATE ROUTE 234 (SUDLEY ROAD)) TO END	N/A	0.00	0.13	0.13	6		GR	

Cycle 5 NPS/RIP Route ID Report

Road Inventory Program 07/17/2013

(Numerical By Route #)

Page 2 of 6

Shading Color Key:
Red text denotes
approx. mileage

White = Paved Routes, DCV Driven
Grey = Paved Routes, DCV not Driven

Yellow = Unpaved Routes, DCV not Driven

Black = State, Local or Private non-NPS Routes

Blue = All Paved Parking Areas

Green = All Unpaved Parking Areas

= Concession Route Flag ON

*Unpaved route data was obtained from NPS and was not inventoried by the Road Inventory Program (RIP).

** DCV - Data Collection Vehicle NC - Not Collected

MANA

MANASSAS NATIONAL BATTLEFIELD PARK

Rte. No.	Cycle Collected	FMSS No.	Concess Route	Route Name	Route Description From	To	Maint. District	Paved Miles	Un-Paved Miles	Total Route Length	Func. Class	Manual Rated SQ/FT	Surf. Type	Area Maps
0900	5	56981		PORTICI HORSE TRAILER PARKING	FROM ROUTE 5000 (BATTLEVIEW PARKWAY)	TO ROUTE 5000 (BATTLEVIEW PARKWAY)	N/A	0.00	0.00	0.00		12,904	AS	2
0901	NC	56987		PORTICI HOUSE PARKING	FROM ROUTE 0404 (ROCK ROAD)	TO PARKING	N/A	0.00	0.00	0.00		1,000	GR	
0902	5	56990		VISITOR CENTER PARKING	FROM ROUTE 5234 (STATE ROUTE 234 (SUDLEY ROAD))	TO PARKING	N/A	0.00	0.00	0.00		62,315	AS	2
0903	5	56994		NORTH CHINN INTERPRETIVE PARKING	ADJACENT TO ROUTE 0012 (NORTH CHINN RIDGE ROAD) ON LEFT		N/A	0.00	0.00	0.00		1,010	AS	2
0904	5	56995		SOUTH CHINN RIDGE PARKING	FROM END OF ROUTE 0011 (SOUTH CHINN RIDGE ROAD)	TO ROUTE 0401 (COMPTON FIRE ROAD)	N/A	0.00	0.00	0.00		14,024	AS	2
0905	5	56998		MAINTENANCE AREA	FROM ROUTE 5234 (STATE ROUTE 234 (SUDLEY ROAD))	TO PARKING	N/A	0.00	0.00	0.00		38,303	AS	2
0906	NC	57000		MAINTENANCE AREA PARKING	FROM ROUTE 0905 (MAINTENANCE AREA)	TO PARKING	N/A	0.00	0.00	0.00		2,000	GR	
0907	5	56844		STONE BRIDGE PARKING	FROM ROUTE 5029 (U.S. HIGHWAY 29 (LEE HIGHWAY))	TO PARKING	N/A	0.00	0.00	0.00		36,196	AS	2
0908	5	56958		VISITOR PROTECTION PARKING	FROM ROUTE 0415 (VISITOR PROTECTION ACCESS ROAD)	TO ROUTE 0415 (VISITOR PROTECTION ACCESS ROAD)	N/A	0.00	0.00	0.00		4,772	AS	2
0909	5	56961		STONE HOUSE PARKING	FROM ROUTE 5029 (U.S. HIGHWAY 29 (LEE HIGHWAY))	TO PARKING	N/A	0.00	0.00	0.00		15,657	AS	2
0910	5	56963		MATTHEWS HILL PARKING	FROM ROUTE 5234 (STATE ROUTE 234 (SUDLEY ROAD))	TO PARKING	N/A	0.00	0.00	0.00		15,816	AS	2
0911	5	56873		SUDLEY CHURCH PARKING	FROM ROUTE 5234 (STATE ROUTE 234 (SUDLEY ROAD))	TO PARKING	N/A	0.00	0.00	0.00		3,334	AS	2
0912	5	56957		UNFINISHED RAILROAD PARKING	FROM FEATHERBED LANE (UNPAVED PORTION)	TO PARKING	N/A	0.00	0.00	0.00		4,658	AS	1

Cycle 5 NPS/RIP Route ID Report

Road Inventory Program 07/17/2013

(Numerical By Route #)

Page 4 of 6

Shading Color Key:

Red text denotes approx. mileage

White = Paved Routes, DCV Driven

Grey = Paved Routes, DCV not Driven

Yellow = Unpaved Routes, DCV not Driven

Black = State, Local or Private non-NPS Routes

Blue = All Paved Parking Areas

Green = All Unpaved Parking Areas

■ = Concession Route Flag ON

*Unpaved route data was obtained from NPS and was not inventoried by the Road Inventory Program (RIP).

** DCV - Data Collection Vehicle NC - Not Collected

MANA

MANASSAS NATIONAL BATTLEFIELD PARK

Rte. No.	Cycle Collected	FMSS No.	Concess Route	Route Name	Route Description From To	Maint. District	Paved Miles	Un-Paved Miles	Total Route Length	Func. Class	Manual Rated SQ/FT	Surf. Type	Area Maps
5029	5			U.S. HIGHWAY 29 (LEE HIGHWAY)	FROM EAST PARK BOUNDARY TO WEST PARK BOUNDARY	N/A	4.28	0.00	4.28			AS	1,2
5234	5			STATE ROUTE 234 (SUDLEY ROAD)	FROM INTERSECTION WITH ROUTE 5000 (BATTLEVIEW PARKWAY) TO NORTH PARK BOUNDARY	N/A	2.51	0.00	2.51			AS	2
5622	5			STATE ROUTE 622 (FEATHERBED / GROVETON ROAD)	FROM INTERSTATE 66 OVERPASS BRIDGE TO UNPAVED SECTION OF FEATHERBED LANE NEAR ROUTE 0913 (DEEP CUT PARKING)	N/A	1.47	0.00	1.47			AS	1
5705A	5			STATE ROUTE 705 (PAGELAND LANE (NORTH))	FROM NORTH PARK BOUNDARY TO END OF PAVEMENT NEAR ROUTE 0916 (STUARTS HILL CENTER PARKING)	N/A	1.06	0.00	1.06			AS	1
5705B	5			STATE ROUTE 705 (PAGELAND LANE (SOUTH))	FROM UNPAVED SECTION OF PAGELAND LANE TO ROUTE 5622 (STATE ROUTE 622 (FEATHERBED / GROVETON ROAD))	N/A	1.20	0.00	1.20			AS	1

Cycle 5 NPS/RIP Route ID Report

Road Inventory Program 07/17/2013

(Numerical By Route #)

Page 5 of 6

Shading Color Key:
Red text denotes approx. mileage

White = Paved Routes, DCV Driven
Grey = Paved Routes, DCV not Driven

Yellow = Unpaved Routes, DCV not Driven
Black = State, Local or Private non-NPS Routes

Blue = All Paved Parking Areas
■ = Concession Route Flag ON

Green = All Unpaved Parking Areas

*Unpaved route data was obtained from NPS and was not inventoried by the Road Inventory Program (RIP).

** DCV - Data Collection Vehicle NC - Not Collected

CYCLE 5 SUMMARY TOTALS FOR MANASSAS NATIONAL BATTLEFIELD PARK

<u>CYCLE 5 ROUTE TOTALS</u>	
DCV Driven Route Miles	2.71
Manually Rated Route Miles	0.10
TOTAL PARK ROUTE MILES COLLECTED IN CYCLE 5	2.81
Manually Rated Routes (SQFT)	0
TOTAL UNPAVED PARK ROUTE MILES	3.34

<u>CYCLE 5 CONCESSION TOTALS</u>	
Concession Paved Route Miles	0.00
Concession Unpaved Route Miles	0.00
TOTAL CONCESSION ROUTE MILES	0.00
Concession Paved Parking Area SQFT	0
Concession Unpaved Parking Area SQFT	0
TOTAL CONCESSION PARKING AREA SQFT	0
Concession Manually Rated Routes SQFT	0

<u>* CYCLE 5 PARKING AREA TOTALS</u>	
Paved Parking (SQFT)	382,069
Unpaved Parking (SQFT)	16,691
TOTAL PARKING (SQFT)	398,760

<u>CYCLE 5 WEIGHTED AVERAGE PARK VALUES</u>	
DCV Driven PCR	46
**Manually Rated Routes PCR	45
**Parking PCR	61
***Total Equivalent Lane Miles	10.73

* - The Parking Area Totals SQFT value represents all parking areas collected in Cycle 5, both park and concessionaire.

** - Parking and Manually Rated Routes are assigned the following PCR values based on their observed condition: Construction=-1, Excellent=97, Good=90, Fair=73, and Poor=45.

*** - Equivalent Lane Miles are calculated by route using the following equations : DCV and Manually Rated Lines Routes=(PAVE_WIDTHxPAVED_MI)/11 foot lane. Parking Areas=SQ_FEET/5280/11. Manually Rated Polygons=SQ_FEET/5280/11.

Cycle 5 NPS/RIP Route ID Report

Shading Color Key:
Red text denotes approx. mileage

White = Paved Routes, DCV Driven
Grey = Paved Routes, DCV not Driven

Yellow = Unpaved Routes, DCV not Driven
Black = State, Local or Private non-NPS Routes

Blue = All Paved Parking Areas
■ = Concession Route Flag ON

Green = All Unpaved Parking Areas

*Unpaved route data was obtained from NPS and was not inventoried by the Road Inventory Program (RIP).

** DCV - Data Collection Vehicle NC - Not Collected

General Park Road Functional Classification Table

- Class 1** Principal Park Road/Rural Parkway (Public Roads) - Roads which constitute the main access route, circulatory tour, or thoroughfare for park visitors. Route Numbers 1 - 99. Note: Rural parkways (e.g. Natchez Trace) are numbered 1 - 9. State Routes Inventoried for Park. Route Numbers 5000-5999
- Class 2** Connector Park Road (Public Roads) - Roads which provide access within a park to areas of scenic, scientific, recreational or cultural interest, such as overlooks, campgrounds, etc. Route Numbers 100-199.
- Class 3** Special Purpose Park Road (Public Roads) - Roads which provide circulation within public areas, such as campgrounds, picnic areas, visitor center complexes, concessionaire facilities, etc. These roads generally serve low-speed traffic and are often designed for one-way circulation. Route Numbers 200-299.
- Class 4** Primitive Park Roads (Public Roads) - Roads which provide circulation through remote areas and/or access to primitive campgrounds and undeveloped areas. These roads frequently have no minimum design standards and their use may be limited to specially equipped vehicles. Route Numbers 200-299. Note: Functional Classes 3 and 4 have the same route numbers because, historically, they were numbered similarly.
- Class 5** Administrative Access Road (Administrative Roads) - All public roads intended for access to administrative developments or structures such as park offices, employee quarters, or utility areas. Route Numbers 400-499.
- Class 6** Restricted Road (Administrative Roads) - All roads normally closed to the public, including patrol roads, truck trails, and other similar roads. Route Numbers 400-499. Note: Functional Classes 5 and 6 have the same route numbers because historically they were numbered similarly and often there is little distinction between these routes. For example, because utility areas and employee housing are often closed to the public, this restriction would result in classification of FC 6 rather than FC 5.
- Class 7** Urban Parkway (Urban Parkways and City Streets) - These facilities serve high volumes of park and non-park related traffic and are restricted, limited-access facilities in an urban area. This category of roads primarily encompasses the major parkways which serve as gateways to our nation's capital. Other major park roads or portions thereof, however, may be included in this category. Route Numbers 1-9.
- Class 8** City Streets (Urban Parkways and City Streets) - City streets are usually extensions of the adjoining street system that are owned and maintained by the National Park Service. The construction and/or reconstruction should conform with accepted local engineering practice and local conditions. Route Numbers 600-699.

A park road system contains those roads within or giving access to a park or other unit of the NPS which are administered by the NPS, or by the Service in cooperation with other agencies. The assignment of a functional classification (FC) to a park road is not based on traffic volumes or design speed, but on the intended use or function of that road or route.

The historic route numbering system also included a 300 number series for interpretive roads, and a 500 series for one-way roads. There are approximately 250 roads nationwide which are designated by the 300 and 500 series. The numbers for these roads will be maintained for reporting consistency. However, since these interpretive and one-way routes are not as clearly tied to a specific functional class, the 300 and 500 series will be discontinued for future use.

5000 route numbers are assigned to Non-NPS Routes that are State, County or City owned which border, traverse, or provide access to Park Facilities or Locations. 5000 Routes are driven for GPS and Video Log only.

Surface Type Abbreviations:

- AS - Asphaltic Concrete Pavement**
- CO - Portland Cement Concrete Pavement**
- BR - Brick or Pavers Road Bed**
- CB - Cobble Stone Road Bed**
- GR - Gravel Road Bed**
- SA - Sand Road Bed**
- NV - Native or Dirt Material Road Bed**
- OT - Other Materials Road Bed**

ROUTE IDENTIFICATION CHANGES TO PAVED ROUTES FROM PREVIOUS CYCLE - MANA

ROUTES ADDED FROM PREVIOUS INVENTORY:			
Route #	Route Name	Reason for Addition	Comments
0015	BRAWNER FARM ACCESS ROAD	RECENTLY CONSTRUCTED ROUTE	NEW ROAD ADDED TO INVENTORY IN CYCLE 5.
0923	BRAWNER FARM WEST PARKING	RECENTLY CONSTRUCTED ROUTE	NEW PARKING LOT ADDED TO INVENTORY IN CYCLE 5.
5000	BATTLEVIEW PARKWAY	OTHER	NON-NPS ROAD ADDED TO INVENTORY IN CYCLE 5.
5029	U.S. HIGHWAY 29 (LEE HIGHWAY)	OTHER	NON-NPS ROAD ADDED TO INVENTORY IN CYCLE 5.
5234	STATE ROUTE 234 (SUDLEY ROAD)	OTHER	NON-NPS ROAD ADDED TO INVENTORY IN CYCLE 5.
5622	STATE ROUTE 622 (FEATHERBED / GROVETON ROAD)	OTHER	NON-NPS ROAD ADDED TO INVENTORY IN CYCLE 5.
5705A	STATE ROUTE 705 (PAGELAND LANE (NORTH))	OTHER	NON-NPS ROAD ADDED TO INVENTORY IN CYCLE 5.
5705B	STATE ROUTE 705 (PAGELAND LANE (SOUTH))	OTHER	NON-NPS ROAD ADDED TO INVENTORY IN CYCLE 5.

ROUTE IDENTIFICATION CHANGES TO PAVED ROUTES FROM PREVIOUS CYCLE - MANA

OTHER CHANGES FROM PREVIOUS INVENTORY:			
Route #	Route Name	Type of Change	Comments
0412	QUARTERS 9 ACCESS ROAD	COLLECTION METHOD CHANGE	ROUTE WAS COLLECTED BY THE DATA COLLECTION VEHICLE (DCV) IN CYCLE 3 AND WAS MANUALLY RATED IN CYCLE 5 BECAUSE IT IS SHORT, NARROW, AND IN POOR CONDITION.
0415	VISITOR PROTECTION ACCESS ROAD	LENGTH CHANGE	ROUTE WAS LENGTHENED AT THE END IN CYCLE 5 BY CONTINUING THE ROAD AROUND THE LOOP THAT USED TO BE INCLUDED AS PART OF ROUTE 0908 IN CYCLE 3.
0908	VISITOR PROTECTION PARKING	ROUTE SPLIT	PARKING LOT SHAPE CHANGED BY SPLITTING OUT THE OUTER LOOP FROM THE PARKING SHAPE. THE OUTER LOOP SECTION NOW BELONGS TO ROUTE 0415 IN CYCLE 5.
0911	SUDLEY CHURCH PARKING	OTHER	THE PARKING AREA THAT WAS COLLECTED IN CYCLE 3 IS NOT NPS OWNED. THE NPS OWNS A SEPARATE PARKING AREA THAT IS JUST SOUTH OF THE CHURCH, RATHER THAN AT THE CHURCH. THE CORRECT PARKING LOT WAS COLLECTED IN CYCLE 5.
0912	UNFINISHED RAILROAD PARKING	SURFACE TYPE CHANGE	THIS PARKING LOT WAS CONSIDERED UNPAVED IN CYCLE 3 (IT APPEARED TO BE UNPAVED), BUT IT WAS ACTUALLY PAVED AND IN VERY POOR CONDITION. SURFACE TYPE WAS UPDATED FROM GRAVEL TO ASPHALT, AND COLLECTED IN CYCLE 5.
0918	BROWNSVILLE PICNIC AREA PARKING	ROUTE NAME	ROUTE NAME CHANGED FROM "STUARTS HILL PICNIC SITE PARKING".
0920	NEW YORK 5TH AND 10TH PARKING	ROUTE NAME	ROUTE NAME CHANGED FROM "NEW YORK 5TH PARKING".
0921	BROOKLYN 14TH PARKING	ROUTE NAME	ROUTE NAME CHANGED FROM "NEW YORK 10TH PARKING".
0922	ROSEFIELD SITE PARKING	ROUTE NAME	ROUTE NAME CHANGED FROM "RESOURCE MANAGEMENT PARKING".

Section 3

Park Summary Information



Manassas National Battlefield Park



Federal Lands Highway
Road Inventory Program

MANA: PAVED ROUTE MILES AND PERCENTAGES BY FUNCTIONAL CLASS AND PCR

F.C.	Pavement Condition Rating (PCR)								TOTAL MILES
	Poor (0-60)		Fair (61-84)		Good (85-94)		Excellent (95-100)		
	MILES	%	MILES	%	MILES	%	MILES	%	
1	1.56	57.56%	0.18	6.64%	0.04	1.48%	0.36	13.28%	2.14
2									
3									
4									
5			0.21	7.75%	0.22	8.12%	0.14	5.17%	0.57
6									
7									
8									
Totals	1.56	57.56%	0.39	14.39%	0.26	9.59%	0.50	18.45%	2.71

Note: The information in this table is derived from the PMS_20 table in the Park database, which only contains processed data from routes collected with the Data Collection Vehicle (DCV). Information for Manually Rated Routes (MRR) and Parking Areas is not reported in this table. Only Functional Class 1, 2, & 7 routes, and any new routes not previously collected by RIP, are collected in Large Parks.

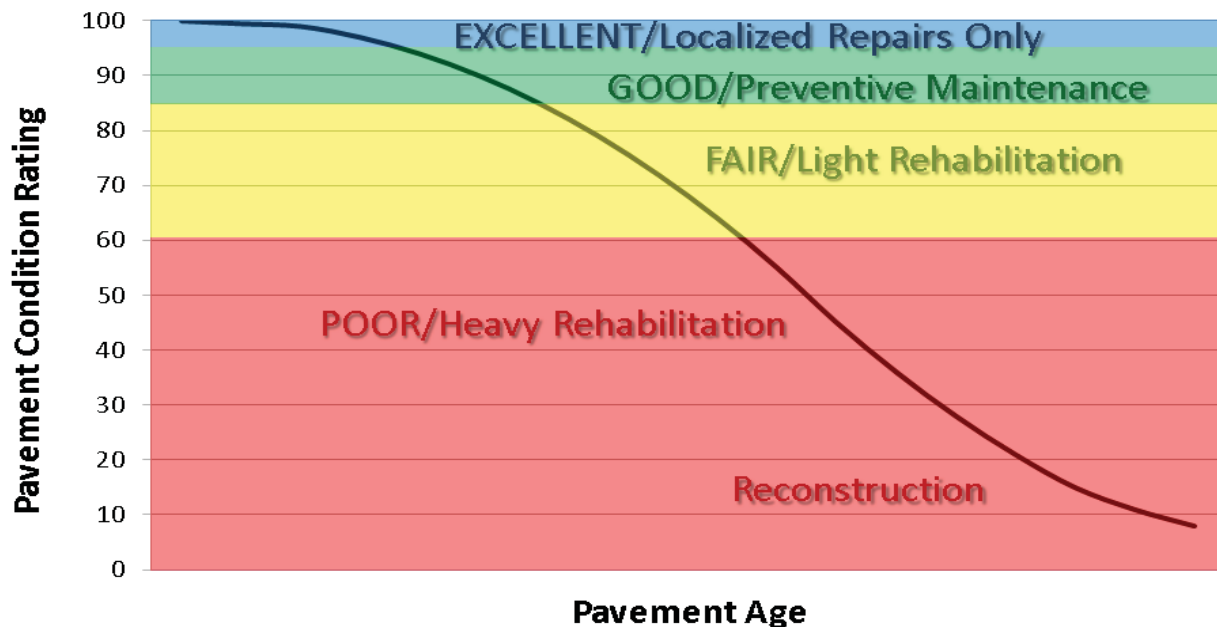
Explanation of the Excellent, Good, Fair and Poor Condition Descriptions

In addition to the RIP Index changes that have been implemented in Cycle 5, we will also aim to provide greater assistance in translating excellent/good/fair/poor categories into pavement needs categories. The PCR can be used to indicate the place in the Pavement Life Cycle and the types of treatments that should be considered now and into the future.

- Excellent/New: PCR of 95-100. Pavements in this range will require only spot repairs
- Good: PCR of 85-94. Pavements in this range will likely be candidates for Preventive Maintenance. Examples include Chip and Slurry Seals, Micro Surfacing and Thin Overlays.
- Fair: PCR of 61-84. Pavements in this range will likely be candidates of Light Rehabilitation (L3R). Examples include single-lift overlays up to 2.5 inches in total thickness, milling and overlays.
- Poor: PCR of 0-60. Pavements in this range will likely be candidates of Heavy Rehabilitation or Reconstruction (H3R or 4R). Examples include Pulverization, Multiple Lift Overlays, and Reconstruction.

At this time, specific Maintenance and Rehabilitation activities should be evaluated and recommended at the project level. Site-specific conditions that influence treatment type should be determined based on performing a subsurface investigation and/or pavement condition survey, and not be based solely on RIP data. Additionally, RIP produces a snapshot of conditions the year in which the data was collected. For further information or to obtain additional Pavement Management System's data from our Highway Pavement Management Application (HPMA) please contact the Eastern Federal Lands pavement team.

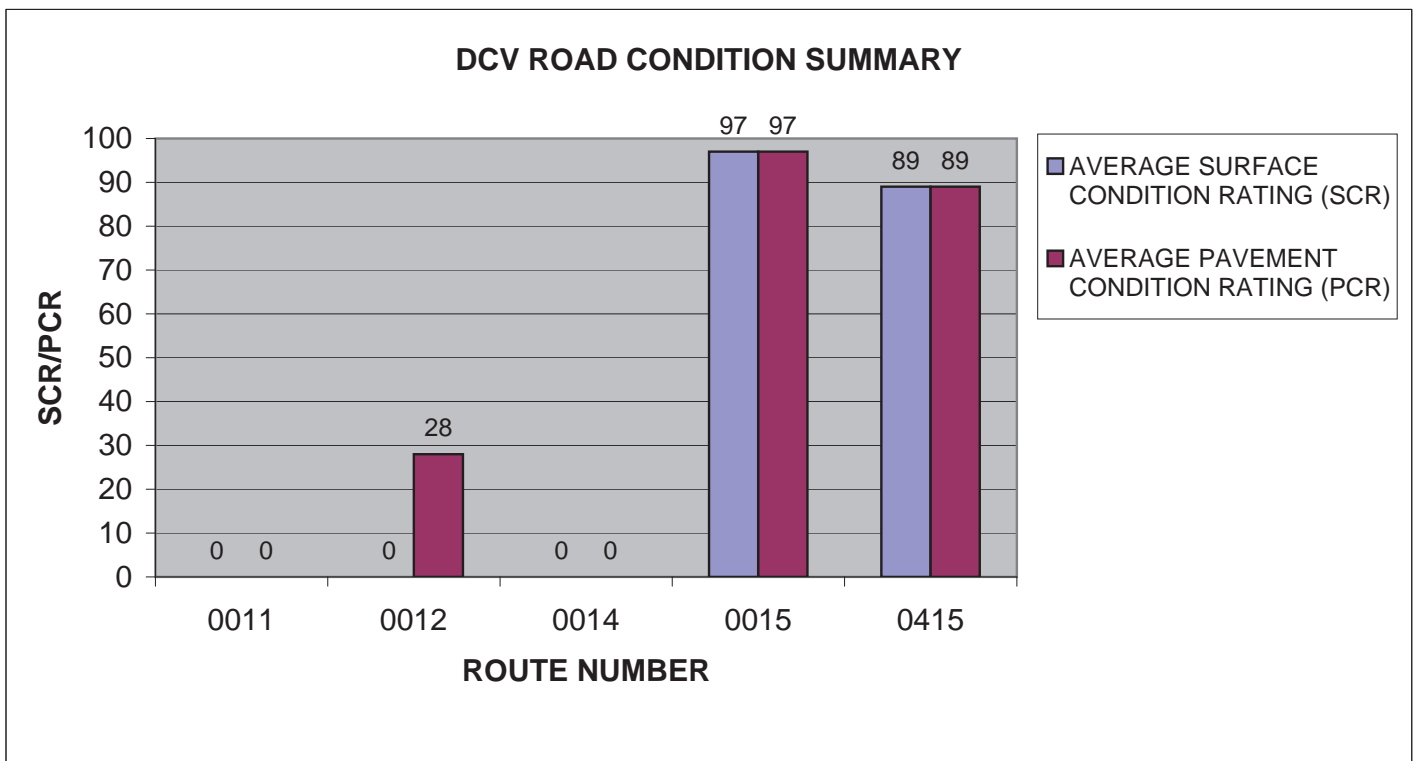
Condition Categories and Treatments



MANA: DCV ROAD CONDITION SUMMARY

DCV - Data Collection Vehicle

ROUTE NUMBER	ROUTE NAME	FUNCT CLASS	PAVED LENGTH	SURFACE TYPE	AVERAGE SURFACE CONDITION RATING (SCR)	AVERAGE PAVEMENT CONDITION RATING (PCR)
0011	SOUTH CHINN RIDGE ROAD	1	0.18	ASPHALT	0	0
0012	NORTH CHINN RIDGE ROAD	1	1.20	ASPHALT	0	28
0014	NEW YORK AVENUE	1	0.33	ASPHALT	0	0
0015	BRAWNER FARM ACCESS ROAD	1	0.42	ASPHALT	97	97
0415	VISITOR PROTECTION ACCESS ROAD	5	0.57	ASPHALT	89	89

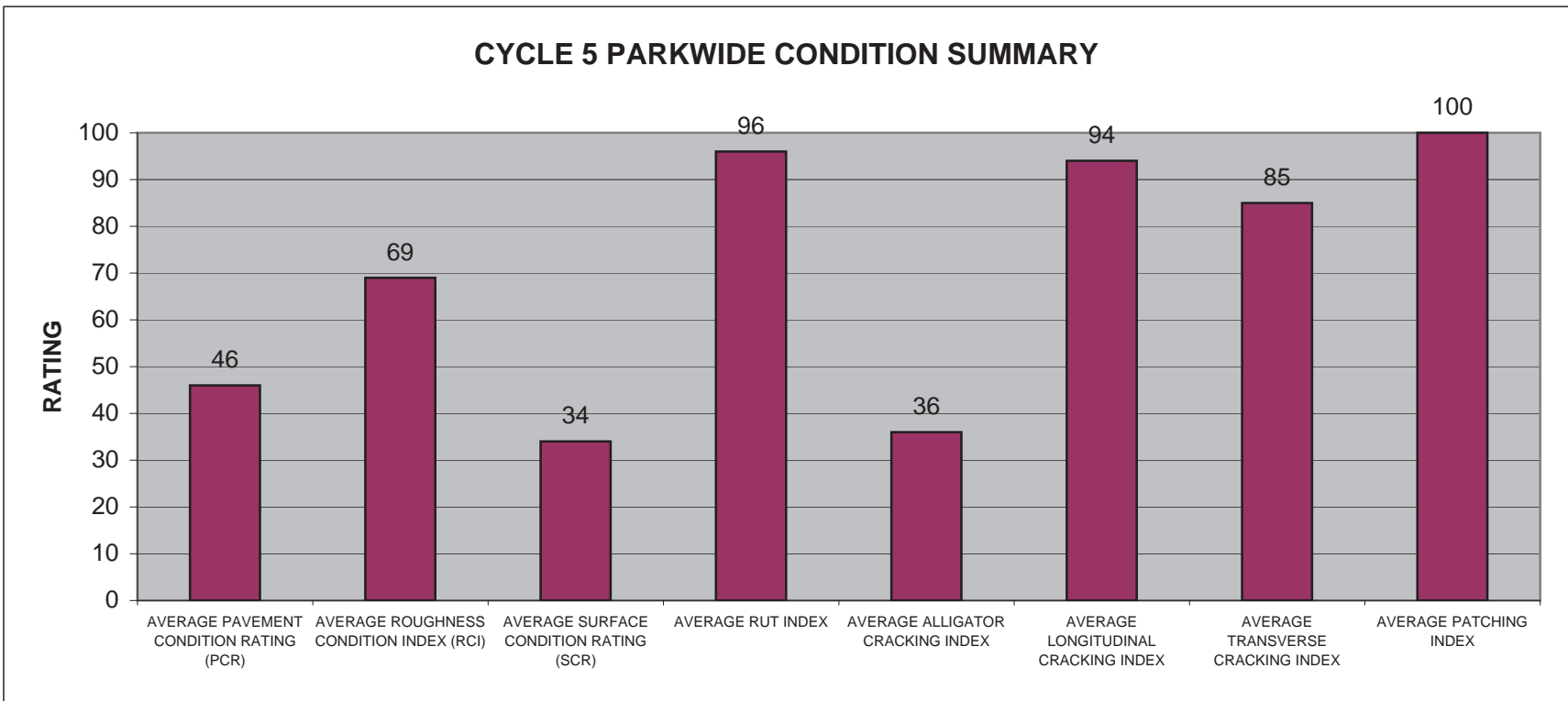


MANA: PARKWIDE DCV CONDITION SUMMARY

AVERAGE PAVEMENT CONDITION RATING (PCR)	AVERAGE ROUGHNESS CONDITION INDEX (RCI)	AVERAGE SURFACE CONDITION RATING (SCR)	AVERAGE RUT INDEX	AVERAGE ALLIGATOR CRACKING INDEX	AVERAGE LONGITUDINAL CRACKING INDEX	AVERAGE TRANSVERSE CRACKING INDEX	AVERAGE PATCHING INDEX
46	69	34	96	36	94	85	100

All Index values are based on Data Collection Vehicle (DCV) driven roads that were collected in Cycle-5.

Roughness data is only collected on routes with lengths greater than 0.5 miles and a posted speed limit of 25 MPH or greater.



Section 4

Park Route Location Maps

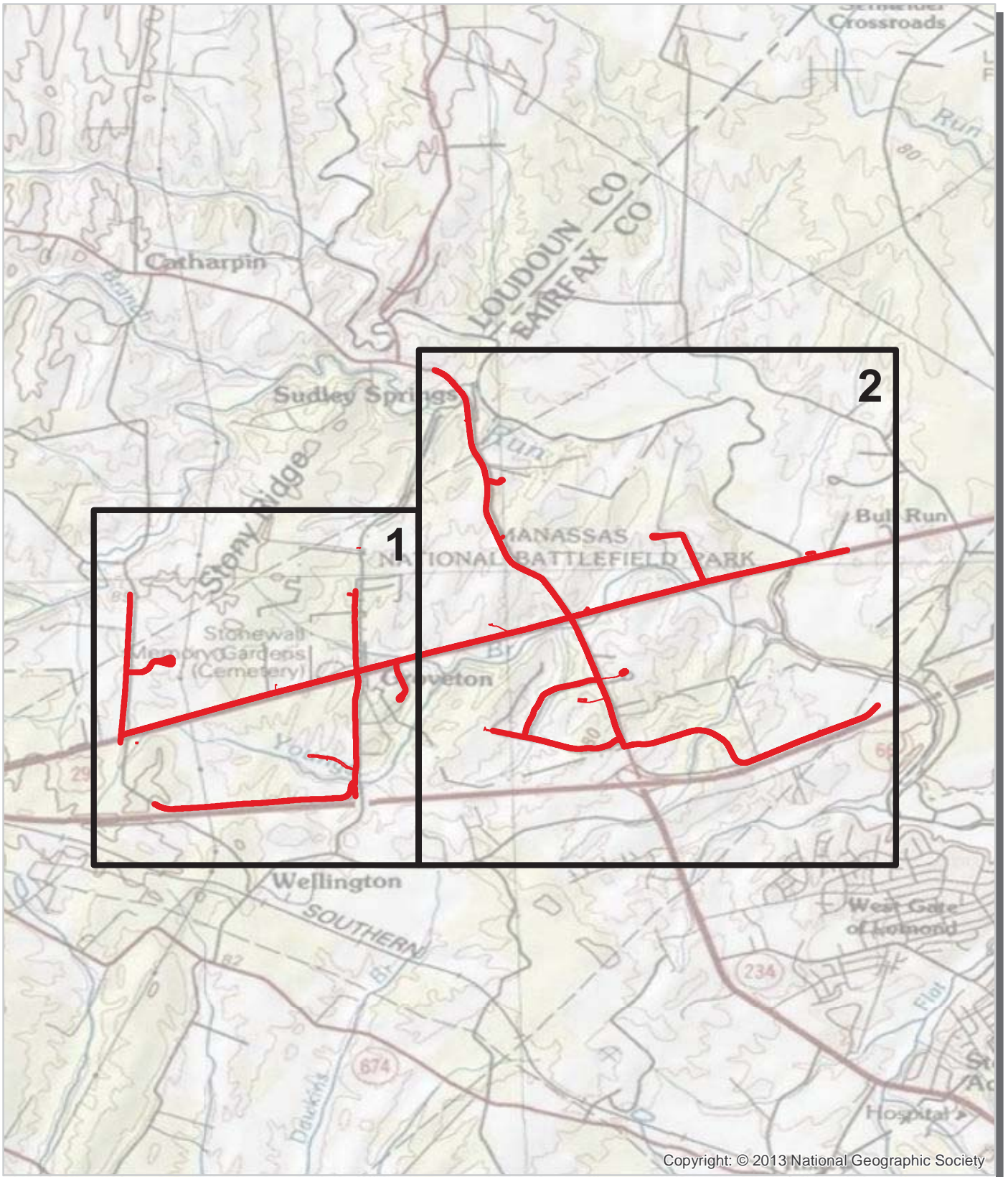


Manassas National Battlefield Park




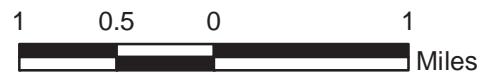
Federal Lands Highway
Road Inventory Program

**Manassas National Battlefield Park
Route Location Map
Key Map**

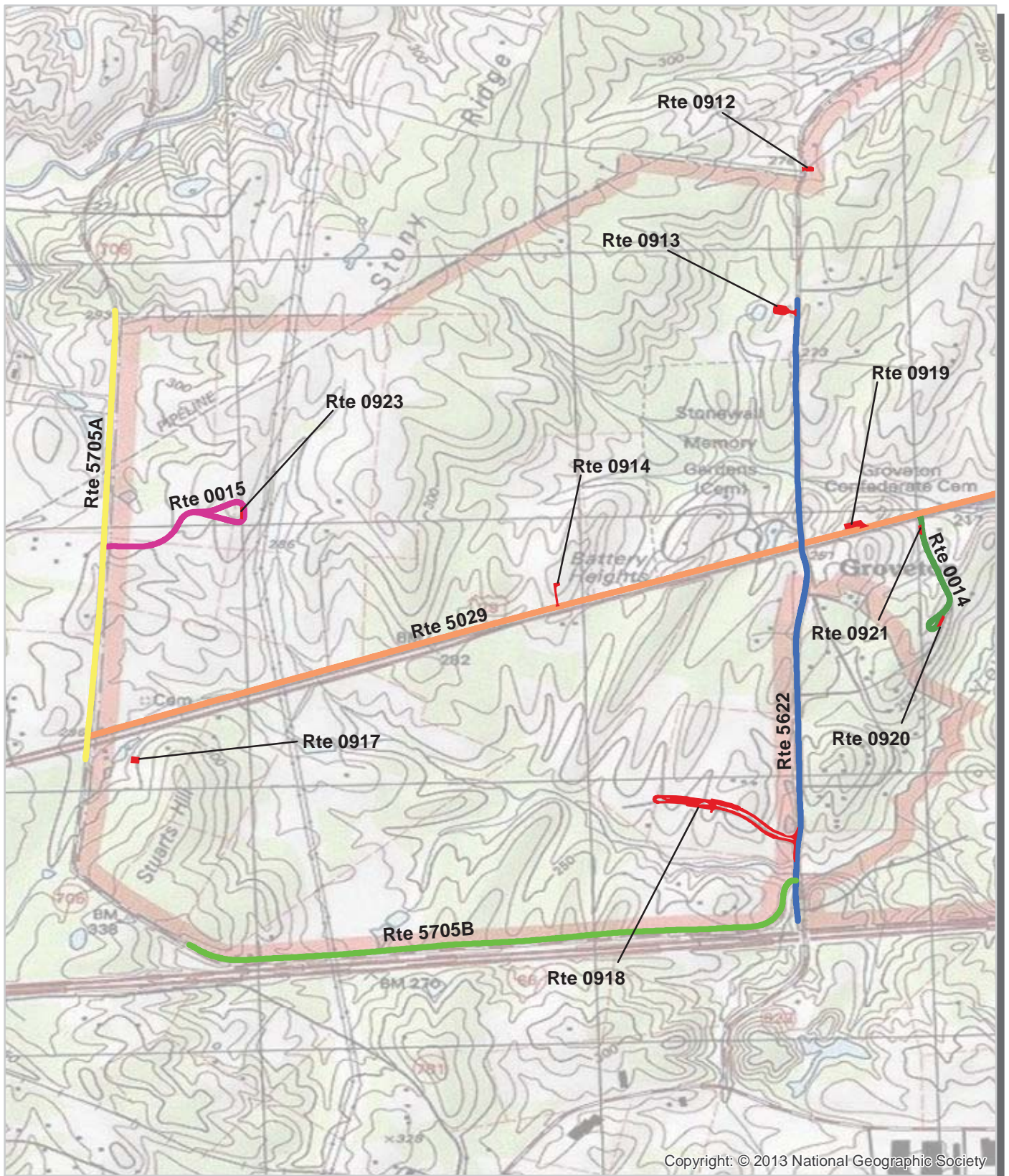


Copyright: © 2013 National Geographic Society

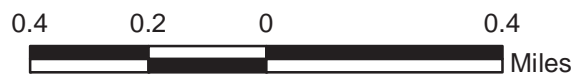
 Cycle 5 Collected Routes



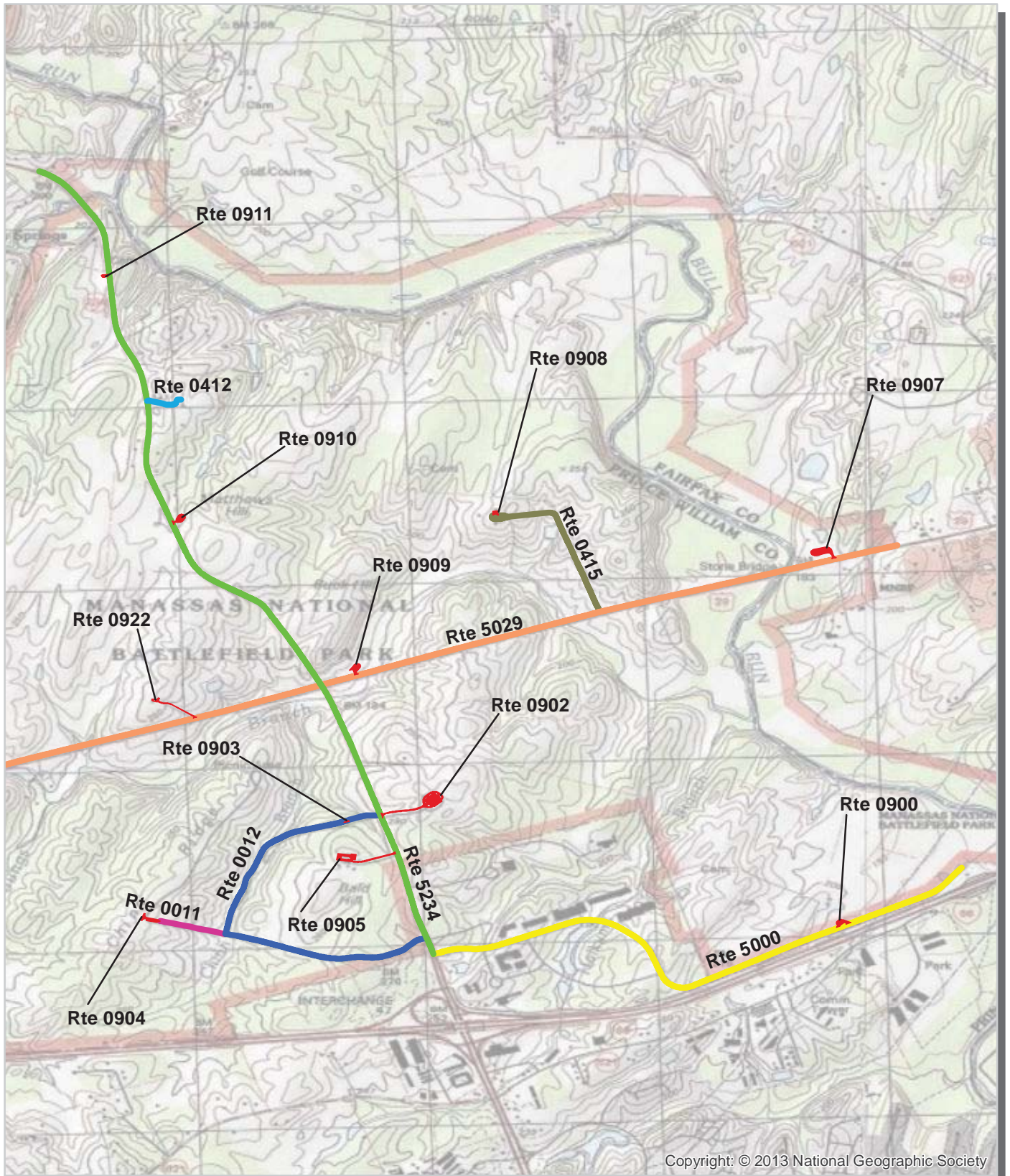
Manassas National Battlefield Park Route Location Map Area 1



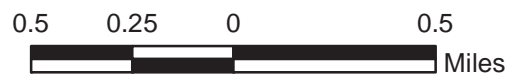
Unique colors used to differentiate routes



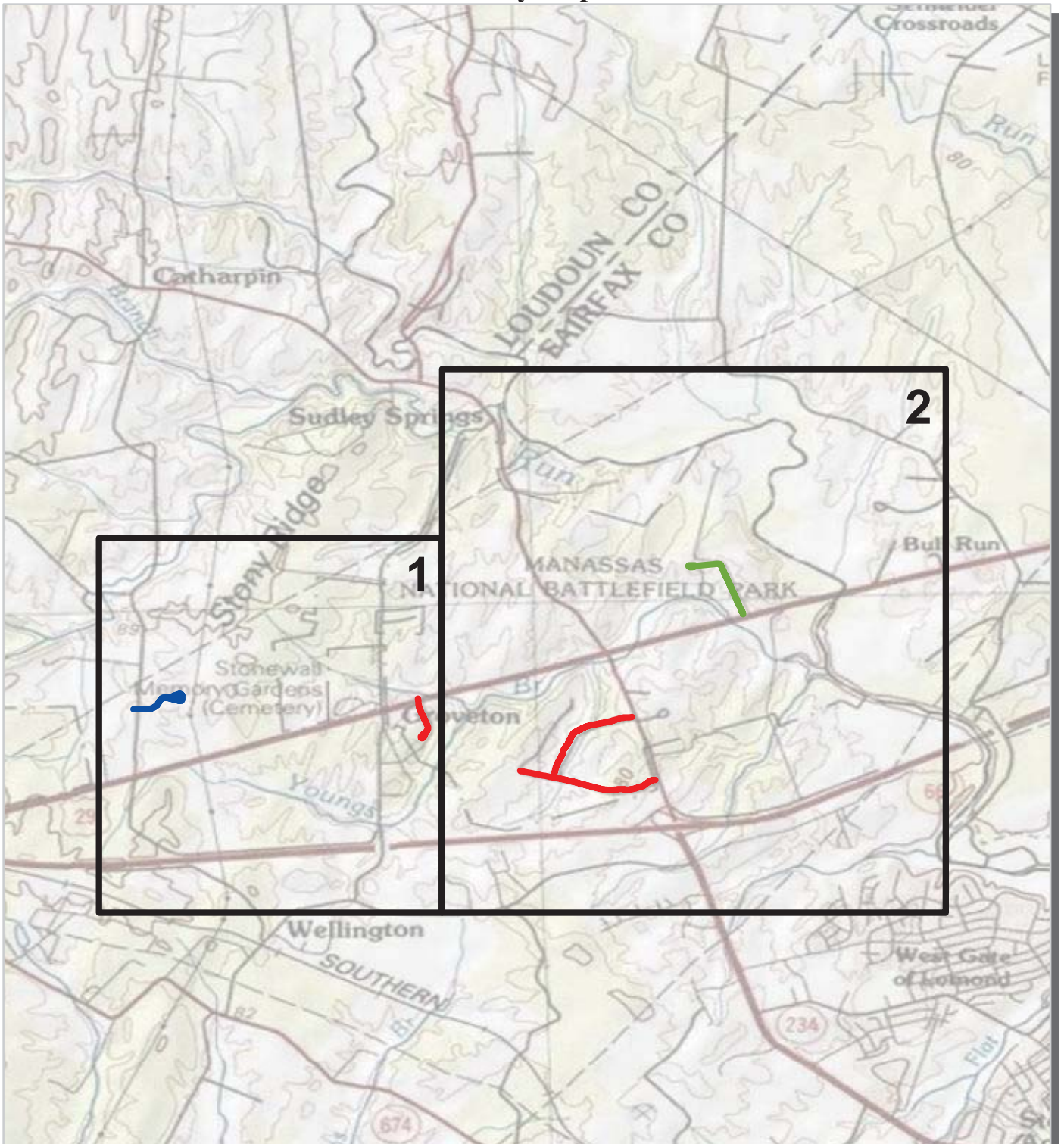
Manassas National Battlefield Park Route Location Map Area 2



Unique colors used to differentiate routes



**Manassas National Battlefield Park
Route Condition Map
PCR - Mile by Mile
Key Map**



PCR	Poor	Fair	Good	Excellent	No Data
	(0 - 60)	(61 - 84)	(85 - 94)	(95 - 100)	

* If the PCR rating is not available for a section, the SCR rating will be displayed. See appendix for definitions and formulas.

Note: Only routes collected by the DCV in Cycle-5 are displayed.

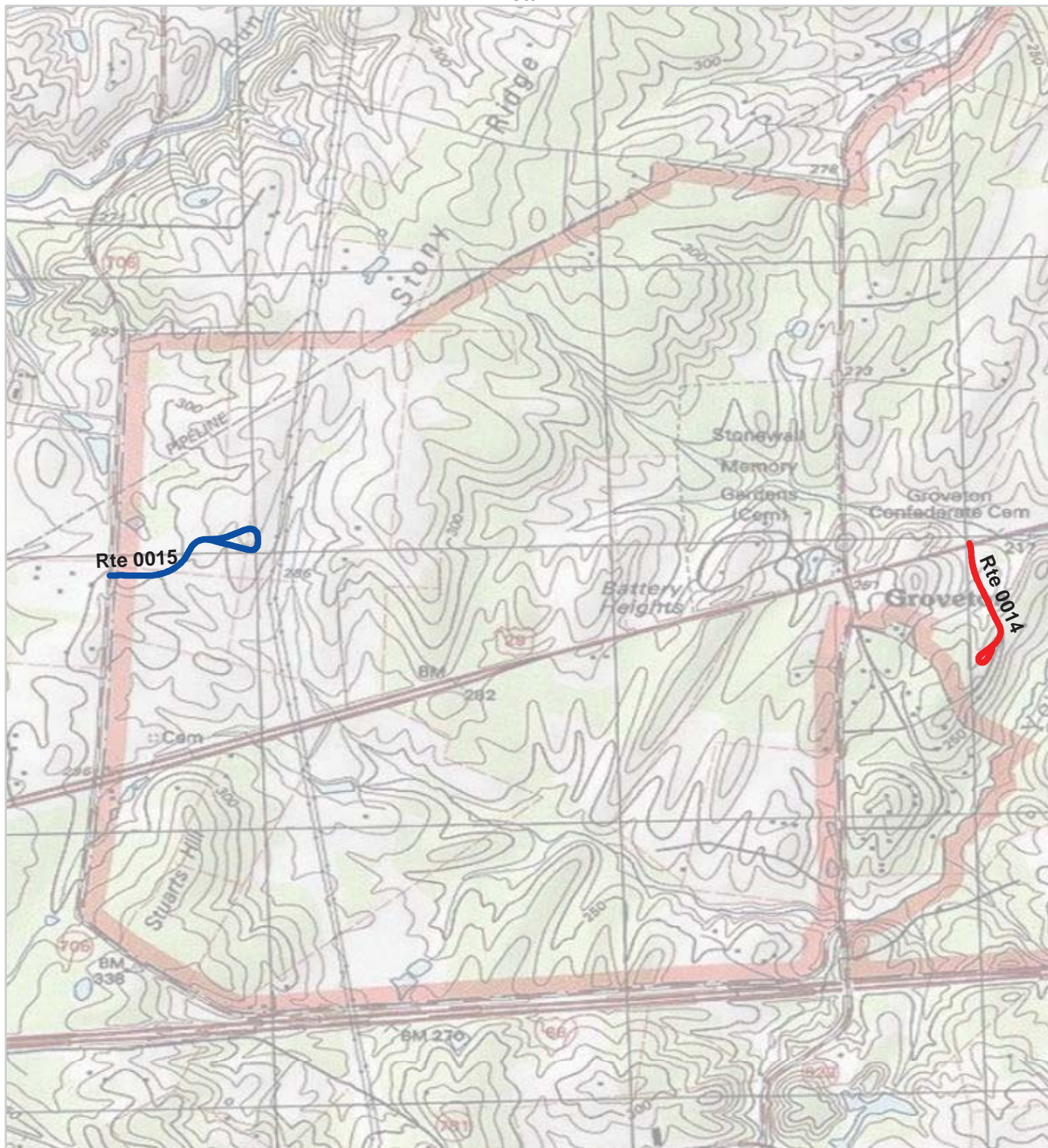


Manassas National Battlefield Park

Route Condition Map

PCR - Mile by Mile

Area 1



PCR	Poor	Fair	Good	Excellent	No Data
	■	■	■	■	■
	(0 - 60)	(61 - 84)	(85 - 94)	(95 - 100)	

* If the PCR rating is not available for a section, the SCR rating will be displayed. See appendix for definitions and formulas.

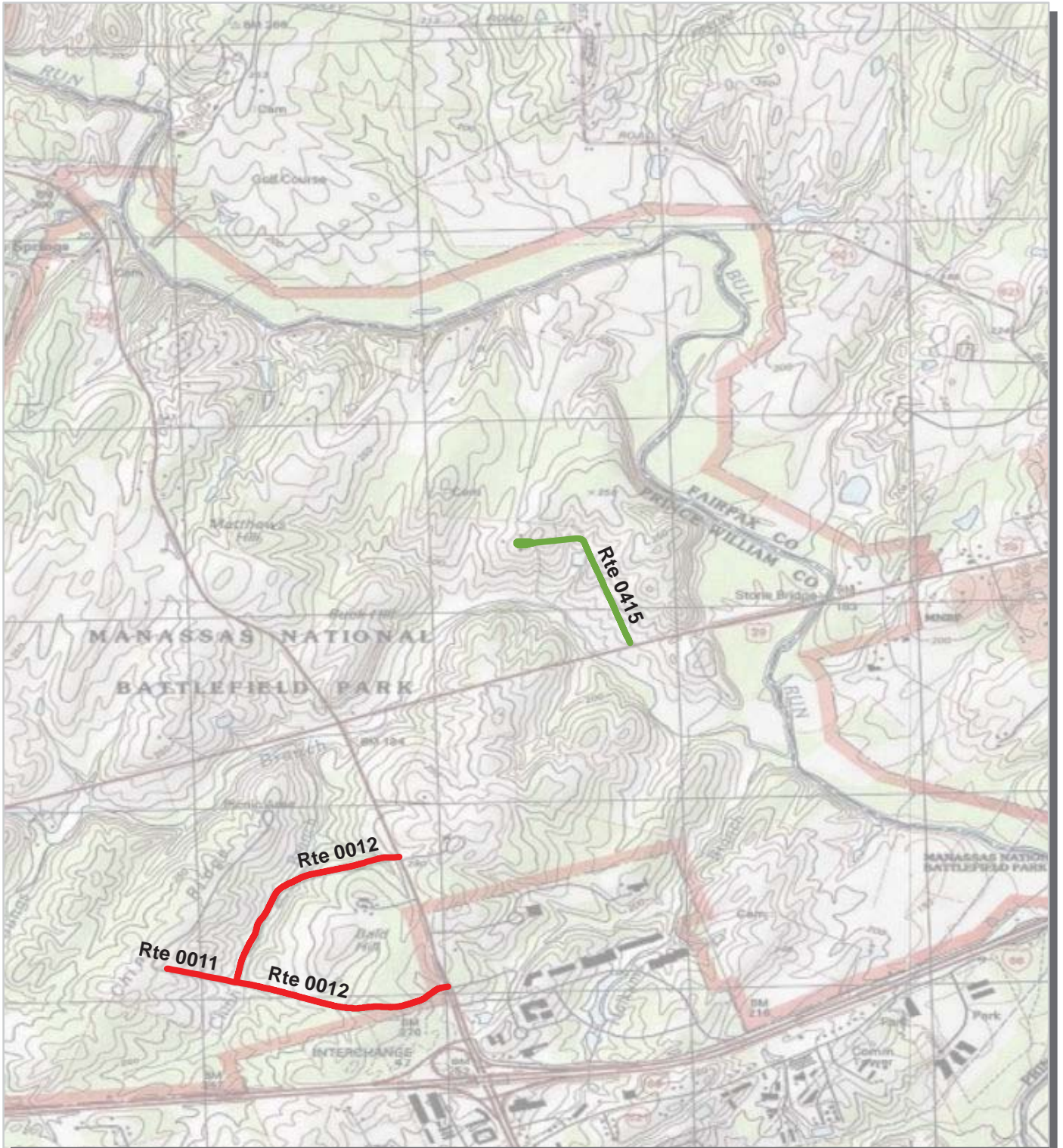


Manassas National Battlefield Park

Route Condition Map

PCR - Mile by Mile

Area 2



PCR	Poor		Fair		Good		Excellent		No Data	
	(0 - 60)		(61 - 84)	(85 - 94)	(95 - 100)					

* If the PCR rating is not available for a section, the SCR rating will be displayed. See appendix for definitions and formulas.



Section 5
Paved Route
Condition Rating Sheets



Manassas National Battlefield Park



**Federal Lands Highway
Road Inventory Program**



PCR	Poor	Fair	Good	Excellent	No Data
	(0 - 60)	(61 - 84)	(85 - 94)	(95 - 100)	

* If the PCR rating is not available for a section, the SCR rating will be displayed. See appendix for definitions and formulas.

ROUTE: 0011 SOUTH CHINN RIDGE ROAD
MANA : MANASSAS NATIONAL BATTLEFIELD PARK

COLLECTED: 2/24/2013
TOTAL LENGTH: 0.18 Miles

NATIONAL CAPITAL REGION

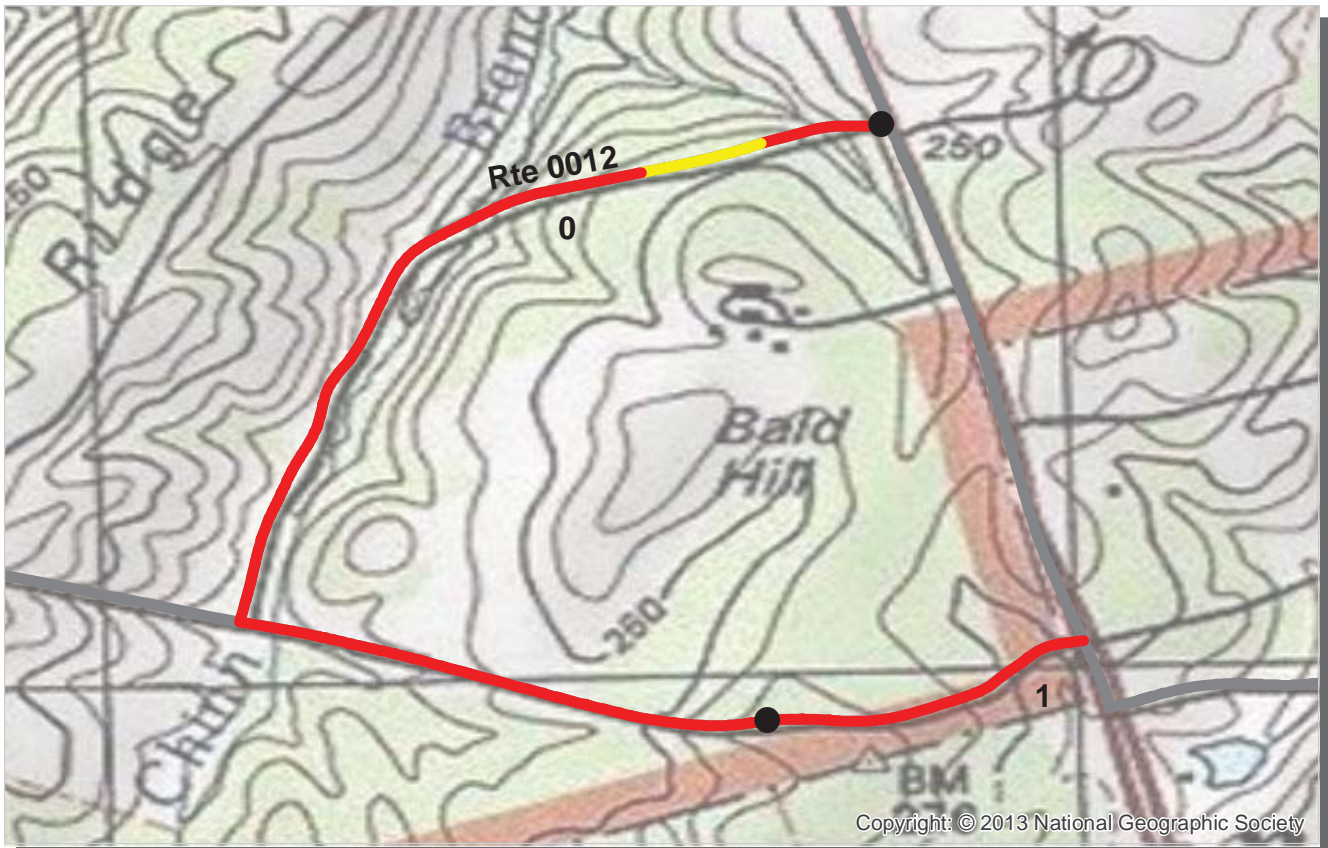
Section Number	0				
Section Length (mi)	0.18				
Cross Section Information					
Number of Lanes	2				
Paved Width (ft)	19				
Lane Width (ft)	9				
Roadway Condition Information					
SCR (Surface Condition Rating)	0				
PCR (Pavement Condition Rating)	0				
Distress Index Values					
Structural Crack Index	0				
Transverse Cracking Index	62				
Patching Index	100				
Rutting Index	95				
Roughness Condition Index (RCI)	NC				

NOTES:

Structural Crack Index is a combination of the Longitudinal Cracking Index and Alligator Cracking Index.
 See Section 10 for explanation of SCR, PCR, & all Distress Index Values.

NC - Not Collected N/A - Not Applicable

ROUTE: 0011 SOUTH CHINN RIDGE ROAD



PCR Poor ■ Fair ■ Good ■ Excellent ■ No Data ■
 (0 - 60) (61 - 84) (85 - 94) (95 - 100)

* If the PCR rating is not available for a section, the SCR rating will be displayed. See appendix for definitions and formulas.

ROUTE: 0012 NORTH CHINN RIDGE ROAD
MANA : MANASSAS NATIONAL BATTLEFIELD PARK

COLLECTED: 2/24/2013
TOTAL LENGTH: 1.20 Miles

NATIONAL CAPITAL REGION

<i>Section Number</i>	0	1			
<i>Section Length (mi)</i>	1.00	0.20			
<i>Cross Section Information</i>					
Number of Lanes	2	2			
Paved Width (ft)	19	18			
Lane Width (ft)	9	9			
<i>Roadway Condition Information</i>					
SCR (Surface Condition Rating)	0	0			
PCR (Pavement Condition Rating)	27	30			
<i>Distress Index Values</i>					
Structural Crack Index	0	0			
Transverse Cracking Index	81	94			
Patching Index	100	100			
Rutting Index	94	97			
Roughness Condition Index (RCI)	67	76			

NOTES:
 Structural Crack Index is a combination of the Longitudinal Cracking Index and Alligator Cracking Index.
 See Section 10 for explanation of SCR, PCR, & all Distress Index Values.
 NC - Not Collected N/A - Not Applicable



ROUTE: 0012 NORTH CHINN RIDGE ROAD



PCR Poor ■ Fair ■ Good ■ Excellent ■ No Data ■
 (0 - 60) (61 - 84) (85 - 94) (95 - 100)

* If the PCR rating is not available for a section, the SCR rating will be displayed. See appendix for definitions and formulas.

ROUTE: 0014 NEW YORK AVENUE
MANA : MANASSAS NATIONAL BATTLEFIELD PARK

COLLECTED: 2/24/2013
TOTAL LENGTH: 0.33 Miles

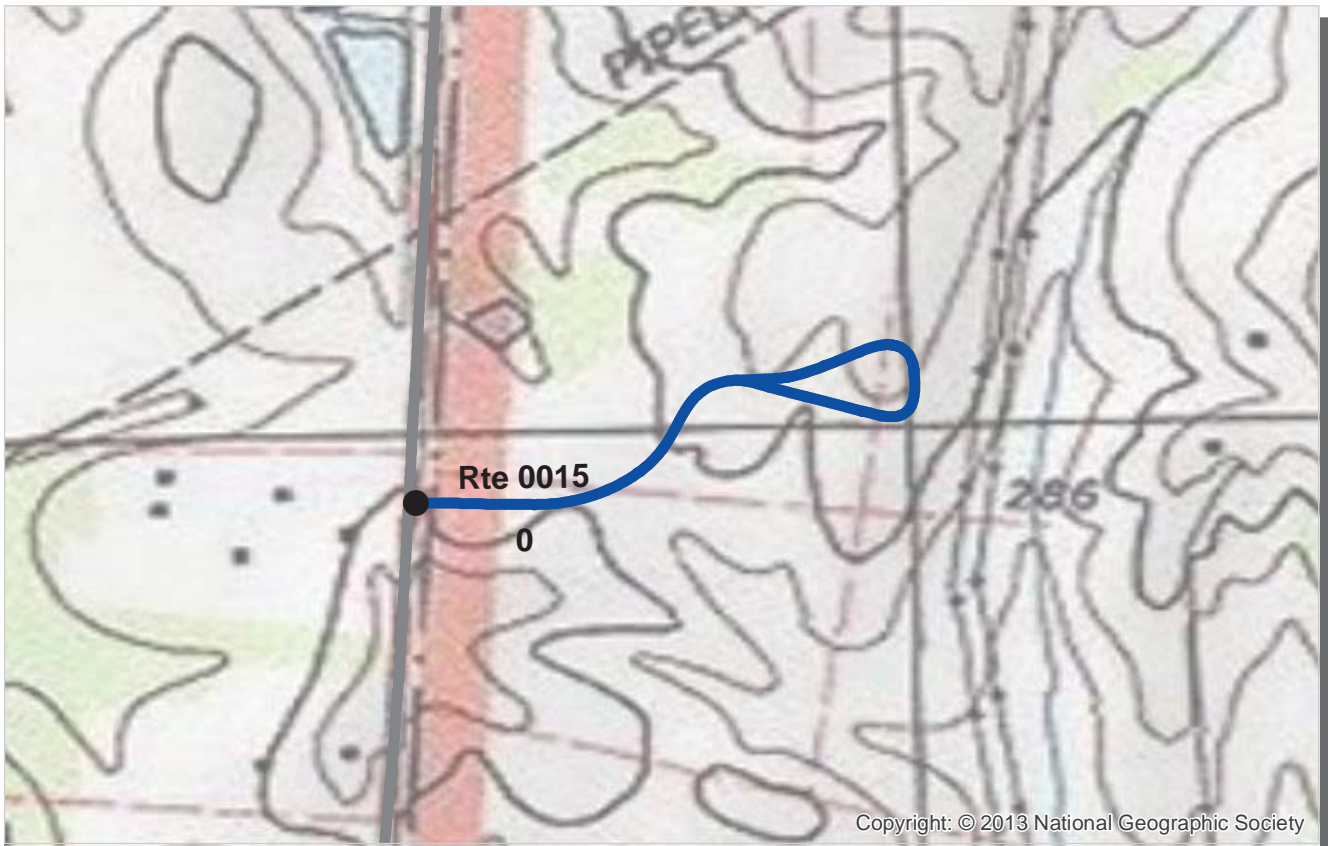
NATIONAL CAPITAL REGION

Section Number	0				
Section Length (mi)	0.33				
Cross Section Information					
Number of Lanes	2				
Paved Width (ft)	16				
Lane Width (ft)	9				
Roadway Condition Information					
SCR (Surface Condition Rating)	0				
PCR (Pavement Condition Rating)	0				
Distress Index Values					
Structural Crack Index	0				
Transverse Cracking Index	78				
Patching Index	100				
Rutting Index	99				
Roughness Condition Index (RCI)	NC				

NOTES:
 Structural Crack Index is a combination of the Longitudinal Cracking Index and Alligator Cracking Index.
 See Section 10 for explanation of SCR, PCR, & all Distress Index Values.
 NC - Not Collected N/A - Not Applicable



ROUTE: 0014 NEW YORK AVENUE



PCR Poor ■ Fair ■ Good ■ Excellent ■ No Data ■
 (0 - 60) (61 - 84) (85 - 94) (95 - 100)

* If the PCR rating is not available for a section, the SCR rating will be displayed. See appendix for definitions and formulas.

ROUTE: 0015 BRAWNER FARM ACCESS ROAD
MANA : MANASSAS NATIONAL BATTLEFIELD PARK

COLLECTED: 2/24/2013
TOTAL LENGTH: 0.42 Miles

NATIONAL CAPITAL REGION

Section Number	0				
Section Length (mi)	0.42				
Cross Section Information					
Number of Lanes	2				
Paved Width (ft)	18				
Lane Width (ft)	12				
Roadway Condition Information					
SCR (Surface Condition Rating)	97				
PCR (Pavement Condition Rating)	97				
Distress Index Values					
Structural Crack Index	97				
Transverse Cracking Index	100				
Patching Index	100				
Rutting Index	99				
Roughness Condition Index (RCI)	NC				

NOTES:

Structural Crack Index is a combination of the Longitudinal Cracking Index and Alligator Cracking Index.
 See Section 10 for explanation of SCR, PCR, & all Distress Index Values.

NC - Not Collected N/A - Not Applicable

ROUTE: 0015 BRAWNER FARM ACCESS ROAD



PCR Poor ■ Fair ■ Good ■ Excellent ■ No Data ■
 (0 - 60) (61 - 84) (85 - 94) (95 - 100)

* If the PCR rating is not available for a section, the SCR rating will be displayed. See appendix for definitions and formulas.

ROUTE: 0415 VISITOR PROTECTION ACCESS ROAD
MANA : MANASSAS NATIONAL BATTLEFIELD PARK

COLLECTED: 2/24/2013
TOTAL LENGTH: 0.57 Miles

NATIONAL CAPITAL REGION

Section Number	0				
Section Length (mi)	0.57				
Cross Section Information					
Number of Lanes	1				
Paved Width (ft)	11				
Lane Width (ft)	11				
Roadway Condition Information					
SCR (Surface Condition Rating)	89				
PCR (Pavement Condition Rating)	89				
Distress Index Values					
Structural Crack Index	96				
Transverse Cracking Index	89				
Patching Index	100				
Rutting Index	97				
Roughness Condition Index (RCI)	NC				

NOTES:

Structural Crack Index is a combination of the Longitudinal Cracking Index and Alligator Cracking Index.
 See Section 10 for explanation of SCR, PCR, & all Distress Index Values.

NC - Not Collected N/A - Not Applicable



ROUTE: 0415 VISITOR PROTECTION ACCESS ROAD

Section 6

Manually Rated Paved Route Condition Rating Sheets



Manassas National Battlefield Park



Federal Lands Highway
Road Inventory Program

MANASSAS NATIONAL BATTLEFIELD PARK

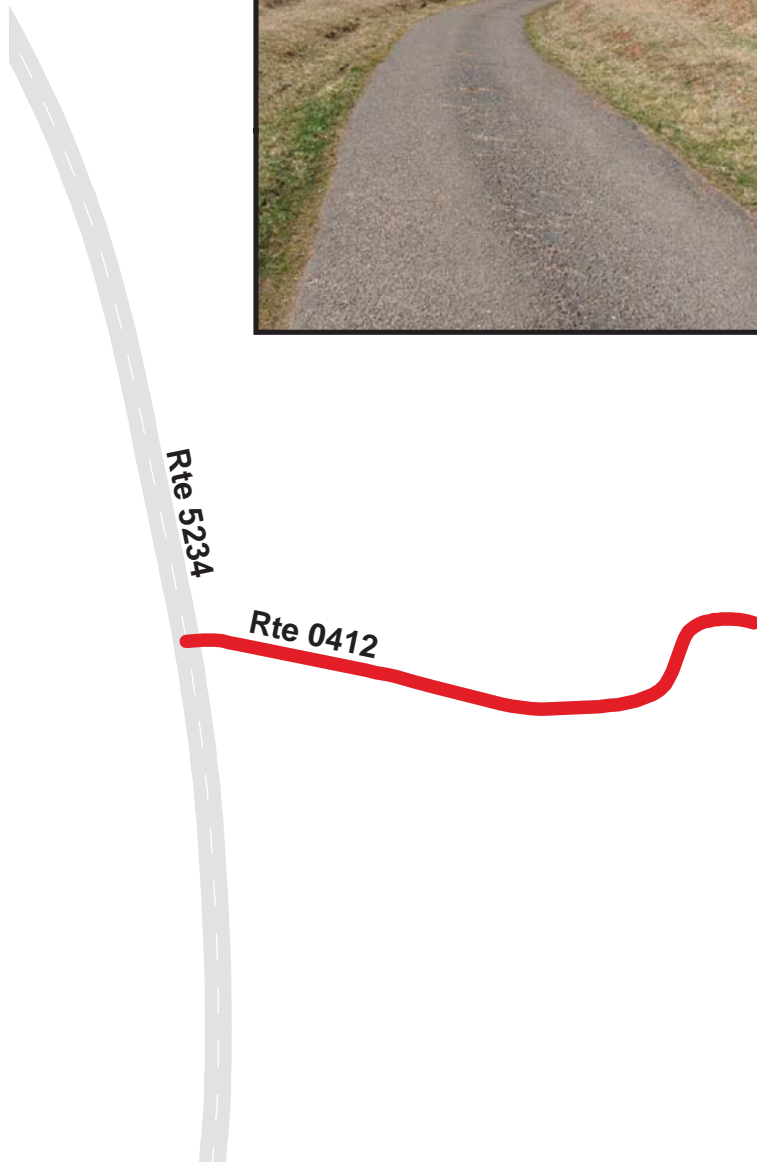
Route 0412

QUARTERS 9 ACCESS ROAD

FROM ROUTE 5234 (STATE ROUTE 234 (SUDLEY ROAD))
TO END OF PAVEMENT

Route Number	Public / NonPublic	Date Visited	Area (sq ft)	Lane Miles *	Paved Length (mi)	Paved Width (ft)
0412	NONPUBLIC	3/13/2012	4,847	0.08	0.10	9
Culverts	Drop Inlets	Gates	Curb & Gutter	Curb	PCR	Surface Type
1	0	1	NO CURB AND GUTTER	NO CURB	POOR/45	AS

* Lane miles are based on 11' lane widths



Section 7
Parking Area
Condition Rating Sheets



Manassas National Battlefield Park



**Federal Lands Highway
Road Inventory Program**

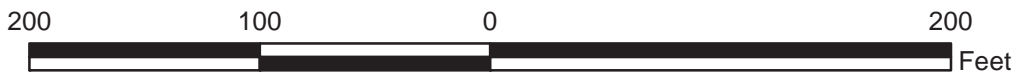
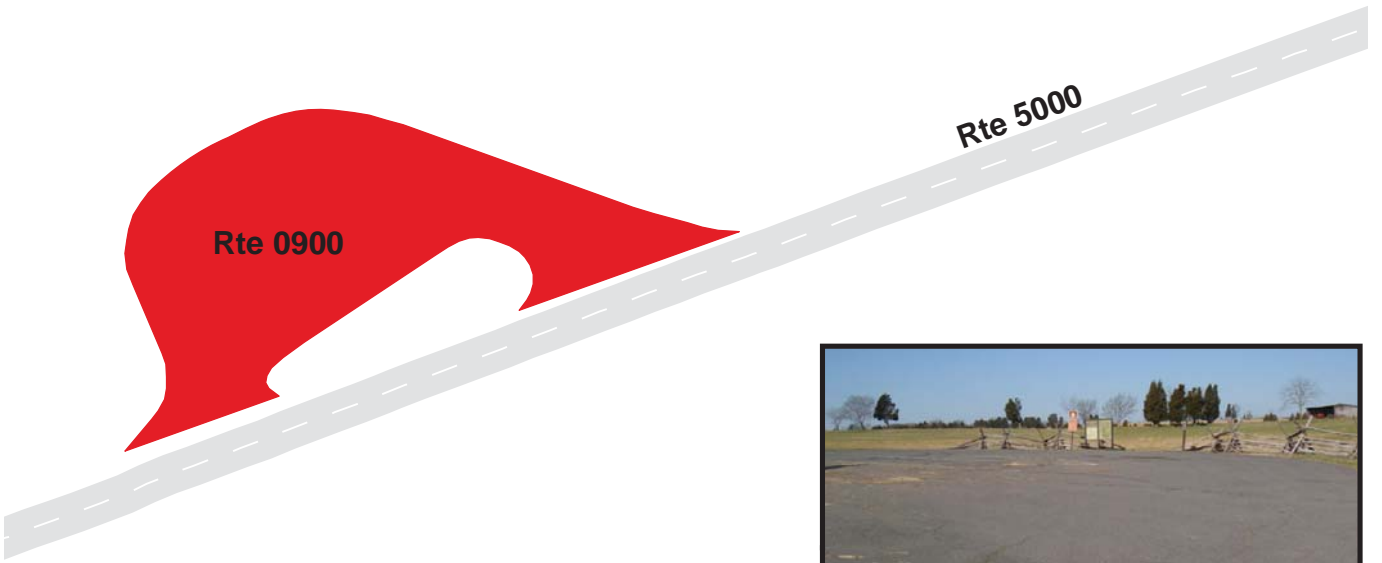
MANASSAS NATIONAL BATTLEFIELD PARK

Route 0900

PORTICI HORSE TRAILER PARKING
 FROM ROUTE 5000 (BATTLEVIEW PARKWAY)
 TO ROUTE 5000 (BATTLEVIEW PARKWAY)

Route Number	Public / NonPublic	Date Visited	Area (sq ft)	Lane Miles *	Surface Type
0900	PUBLIC	3/13/2012	12,904	0.22	AS
Culverts	Drop Inlets	Gates	Curb & Gutter	Curb	PCR
2	0	0	NO CURB AND GUTTER	NO CURB	FAIR/73

* Lane miles are based on 11' lane widths



MANASSAS NATIONAL BATTLEFIELD PARK

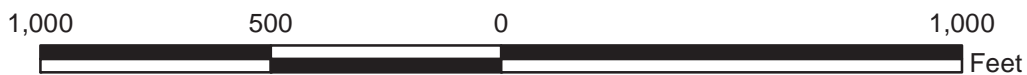
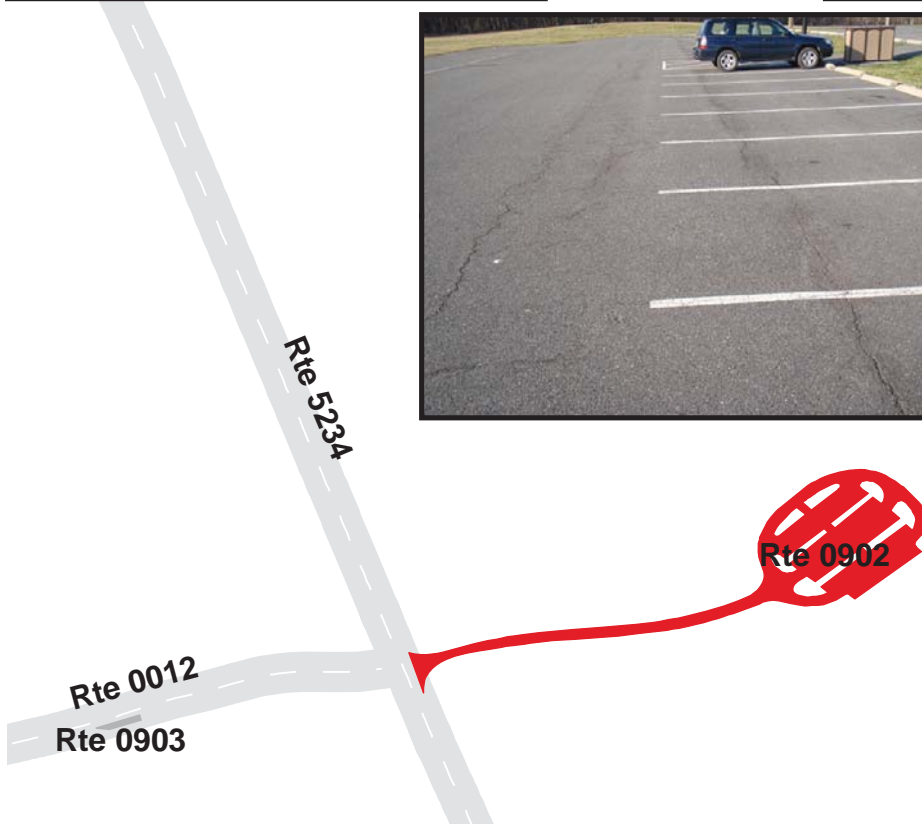
Route 0902

VISITOR CENTER PARKING

FROM ROUTE 5234 (STATE ROUTE 234 (SUDLEY ROAD))
TO PARKING

Route Number	Public / NonPublic	Date Visited	Area (sq ft)	Lane Miles *	Surface Type
0902	PUBLIC	3/13/2012	62,315	1.07	AS
Culverts	Drop Inlets	Gates	Curb & Gutter	Curb	PCR
1	0	1	NO CURB AND GUTTER	NO CURB	FAIR/73

* Lane miles are based on 11' lane widths



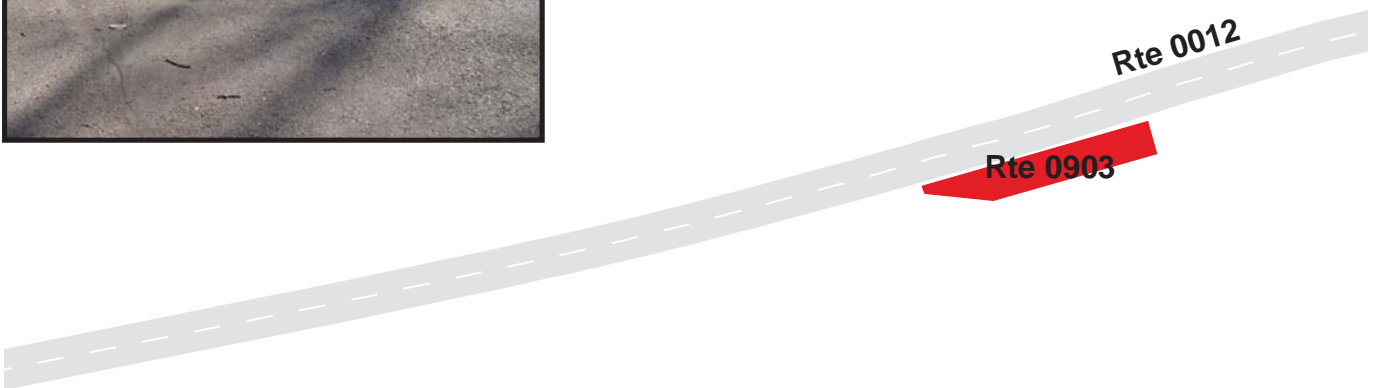
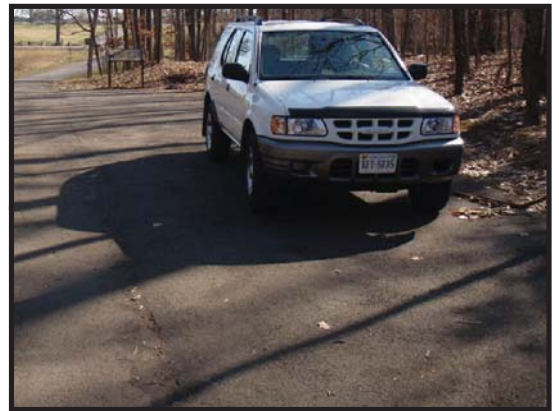
MANASSAS NATIONAL BATTLEFIELD PARK

Route 0903

NORTH CHINN INTERPRETIVE PARKING
 ADJACENT TO ROUTE 0012 (NORTH CHINN RIDGE ROAD) ON LEFT

Route Number	Public / NonPublic	Date Visited	Area (sq ft)	Lane Miles *	Surface Type
0903	PUBLIC	3/13/2012	1,010	0.02	AS
Culverts	Drop Inlets	Gates	Curb & Gutter	Curb	PCR
0	0	0	NO CURB AND GUTTER	NO CURB	GOOD/90

* Lane miles are based on 11' lane widths



MANASSAS NATIONAL BATTLEFIELD PARK

Route 0904

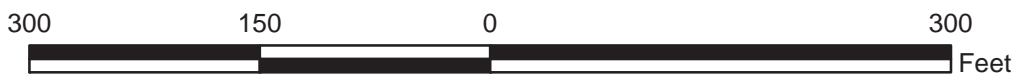
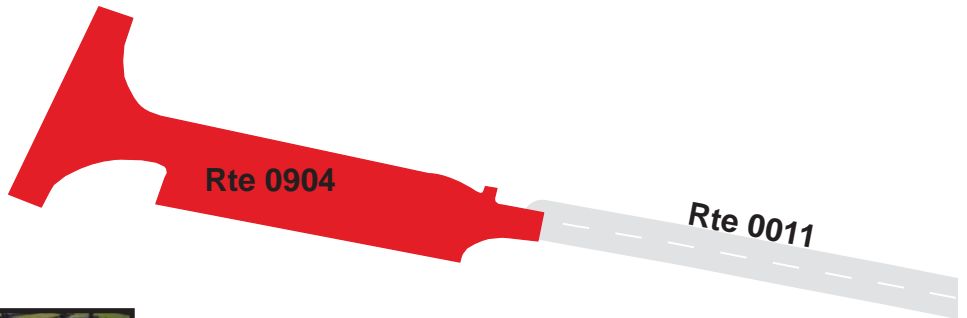
SOUTH CHINN RIDGE PARKING

FROM END OF ROUTE 0011 (SOUTH CHINN RIDGE ROAD)

TO ROUTE 0401 (COMPTON FIRE ROAD)

Route Number	Public / NonPublic	Date Visited	Area (sq ft)	Lane Miles *	Surface Type
0904	PUBLIC	3/13/2012	14,024	0.24	AS
Culverts	Drop Inlets	Gates	Curb & Gutter	Curb	PCR
0	0	1	NO CURB AND GUTTER	CONCRETE CURB	POOR/45

* Lane miles are based on 11' lane widths



MANASSAS NATIONAL BATTLEFIELD PARK

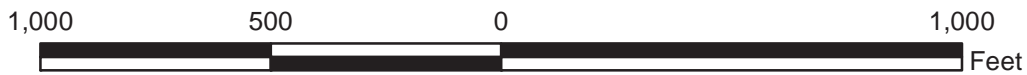
Route 0905

MAINTENANCE AREA

FROM ROUTE 5234 (STATE ROUTE 234 (SUDLEY ROAD))
TO PARKING

Route Number	Public / NonPublic	Date Visited	Area (sq ft)	Lane Miles *	Surface Type
0905	NONPUBLIC	3/13/2012	38,303	0.66	AS
Culverts	Drop Inlets	Gates	Curb & Gutter	Curb	PCR
2	0	5	NO CURB AND GUTTER	CONCRETE CURB	FAIR/73

* Lane miles are based on 11' lane widths



MANASSAS NATIONAL BATTLEFIELD PARK

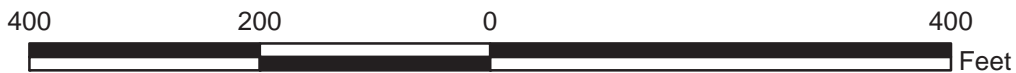
Route 0907

STONE BRIDGE PARKING

FROM ROUTE 5029 (U.S. HIGHWAY 29 (LEE HIGHWAY))
TO PARKING

Route Number	Public / NonPublic	Date Visited	Area (sq ft)	Lane Miles *	Surface Type
0907	PUBLIC	3/13/2012	36,196	0.62	AS
Culverts	Drop Inlets	Gates	Curb & Gutter	Curb	PCR
1	0	1	NO CURB AND GUTTER	NO CURB	FAIR/73

* Lane miles are based on 11' lane widths



MANASSAS NATIONAL BATTLEFIELD PARK

Route 0908

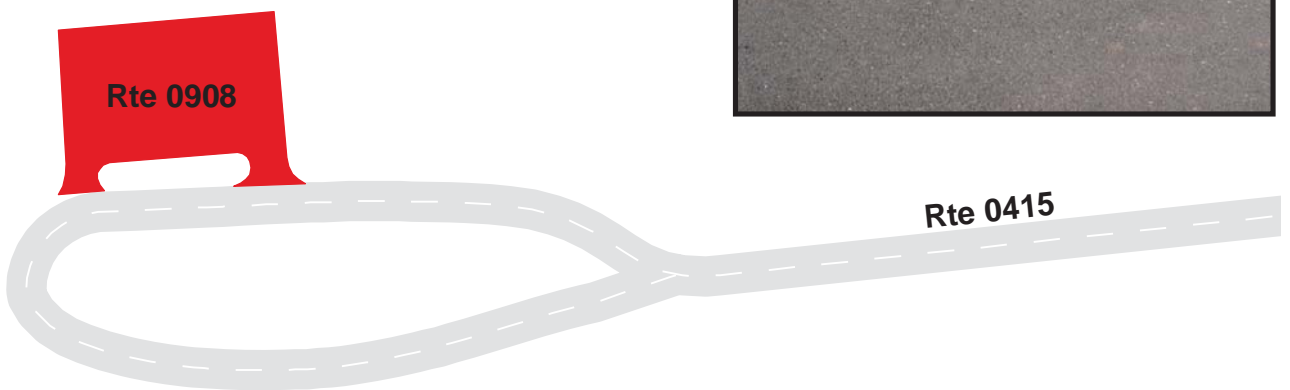
VISITOR PROTECTION PARKING

FROM ROUTE 0415 (VISITOR PROTECTION ACCESS ROAD)

TO ROUTE 0415 (VISITOR PROTECTION ACCESS ROAD)

Route Number	Public / NonPublic	Date Visited	Area (sq ft)	Lane Miles *	Surface Type
0908	NONPUBLIC	3/13/2012	4,772	0.08	AS
Culverts	Drop Inlets	Gates	Curb & Gutter	Curb	PCR
0	0	1	NO CURB AND GUTTER	NO CURB	FAIR/73

* Lane miles are based on 11' lane widths



MANASSAS NATIONAL BATTLEFIELD PARK

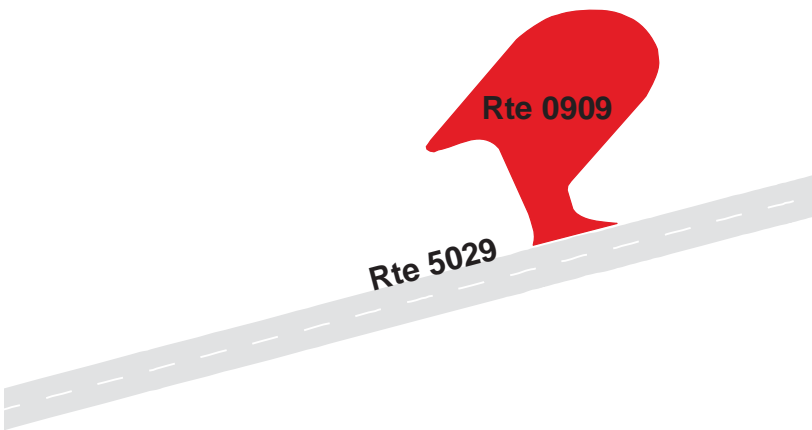
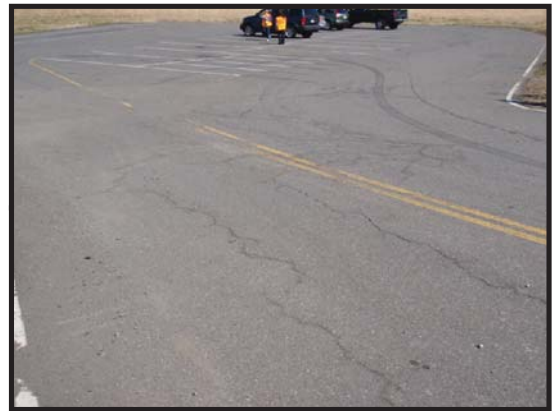
Route 0909

STONE HOUSE PARKING

FROM ROUTE 5029 (U.S. HIGHWAY 29 (LEE HIGHWAY))
TO PARKING

Route Number	Public / NonPublic	Date Visited	Area (sq ft)	Lane Miles *	Surface Type
0909	PUBLIC	3/13/2012	15,657	0.27	AS
Culverts	Drop Inlets	Gates	Curb & Gutter	Curb	PCR
1	0	1	NO CURB AND GUTTER	NO CURB	FAIR/73

* Lane miles are based on 11' lane widths



MANASSAS NATIONAL BATTLEFIELD PARK

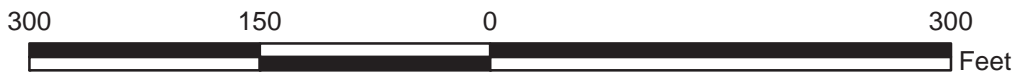
Route 0910

MATTHEWS HILL PARKING

FROM ROUTE 5234 (STATE ROUTE 234 (SUDLEY ROAD))
TO PARKING

Route Number	Public / NonPublic	Date Visited	Area (sq ft)	Lane Miles *	Surface Type
0910	PUBLIC	3/13/2012	15,816	0.27	AS
Culverts	Drop Inlets	Gates	Curb & Gutter	Curb	PCR
1	0	1	NO CURB AND GUTTER	NO CURB	FAIR/73

* Lane miles are based on 11' lane widths



MANASSAS NATIONAL BATTLEFIELD PARK

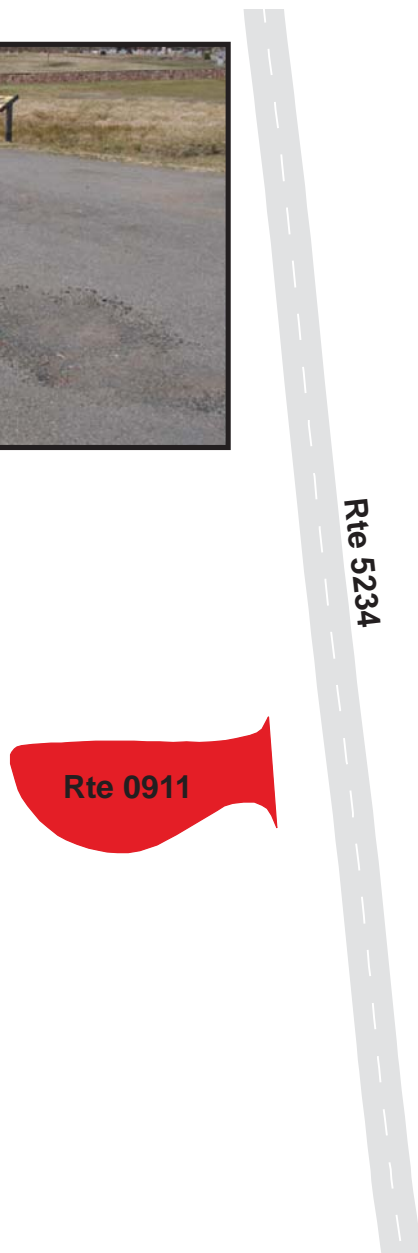
Route 0911

SUDLEY CHURCH PARKING

FROM ROUTE 5234 (STATE ROUTE 234 (SUDLEY ROAD))
TO PARKING

Route Number	Public / NonPublic	Date Visited	Area (sq ft)	Lane Miles *	Surface Type
0911	PUBLIC	3/13/2012	3,334	0.06	AS
Culverts	Drop Inlets	Gates	Curb & Gutter	Curb	PCR
0	0	0	NO CURB AND GUTTER	NO CURB	POOR/45

* Lane miles are based on 11' lane widths



MANASSAS NATIONAL BATTLEFIELD PARK

Route 0912

UNFINISHED RAILROAD PARKING
FROM FEATHERBED LANE (UNPAVED PORTION)
TO PARKING

Route Number	Public / NonPublic	Date Visited	Area (sq ft)	Lane Miles *	Surface Type
0912	PUBLIC	3/13/2012	4,658	0.08	AS
Culverts	Drop Inlets	Gates	Curb & Gutter	Curb	PCR
0	0	0	NO CURB AND GUTTER	WOOD CURB	POOR/45

* Lane miles are based on 11' lane widths



MANASSAS NATIONAL BATTLEFIELD PARK

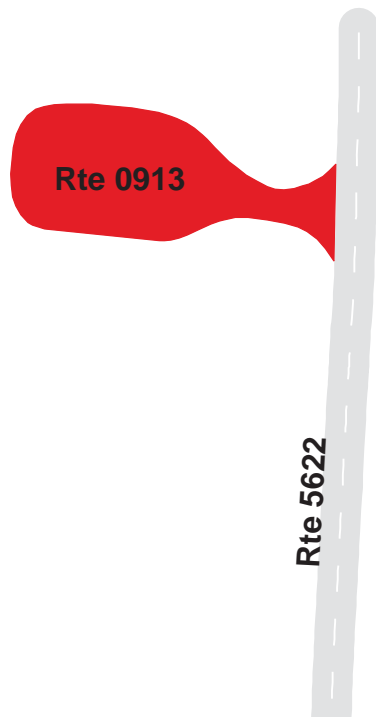
Route 0913

DEEP CUT PARKING

FROM ROUTE 5622 (STATE ROUTE 622 (FEATHERBED / GROVETON ROAD))
TO PARKING

Route Number	Public / NonPublic	Date Visited	Area (sq ft)	Lane Miles *	Surface Type
0913	PUBLIC	3/13/2012	17,559	0.30	AS
Culverts	Drop Inlets	Gates	Curb & Gutter	Curb	PCR
1	0	0	NO CURB AND GUTTER	NO CURB	FAIR/73

* Lane miles are based on 11' lane widths



MANASSAS NATIONAL BATTLEFIELD PARK

Route 0914

BATTERY HEIGHTS PARKING

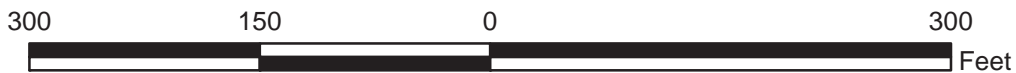
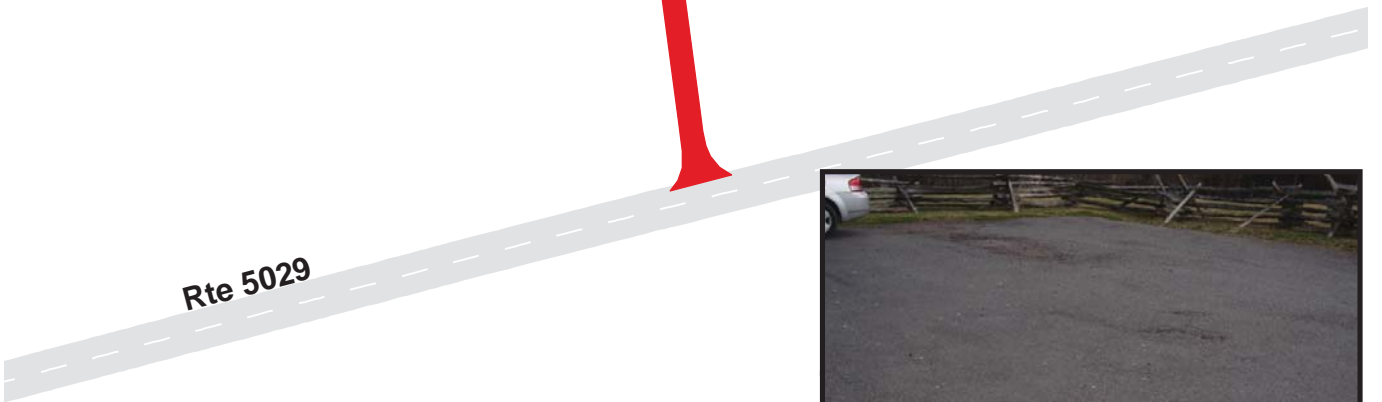
FROM ROUTE 5029 (U.S. HIGHWAY 29 (LEE HIGHWAY))
TO PARKING

Route Number	Public / NonPublic	Date Visited	Area (sq ft)	Lane Miles *	Surface Type
0914	PUBLIC	3/13/2012	5,167	0.09	AS
Culverts	Drop Inlets	Gates	Curb & Gutter	Curb	PCR
0	0	1	NO CURB AND GUTTER	NO CURB	POOR/45

* Lane miles are based on 11' lane widths



Rte 0914



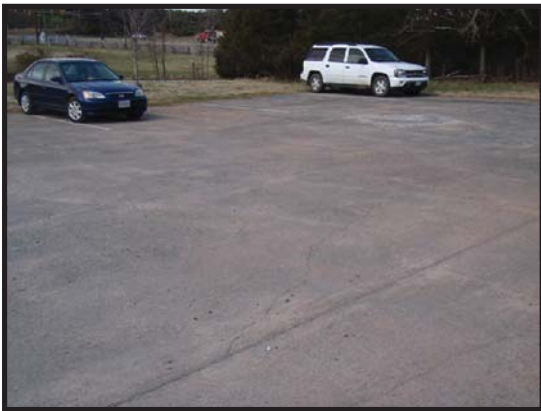
MANASSAS NATIONAL BATTLEFIELD PARK

Route 0917

STUARTS HILL CENTER EMPLOYEE PARKING
FROM ROUTE 0916 (STUARTS HILL CENTER PARKING)
TO PARKING

Route Number	Public / NonPublic	Date Visited	Area (sq ft)	Lane Miles *	Surface Type
0917	NONPUBLIC	3/13/2012	5,180	0.09	CO
Culverts	Drop Inlets	Gates	Curb & Gutter	Curb	PCR
0	0	0	NO CURB AND GUTTER	NO CURB	POOR/45

* Lane miles are based on 11' lane widths



MANASSAS NATIONAL BATTLEFIELD PARK

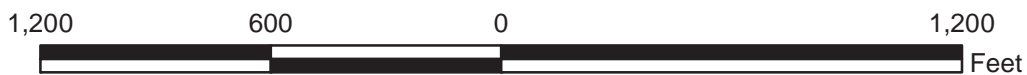
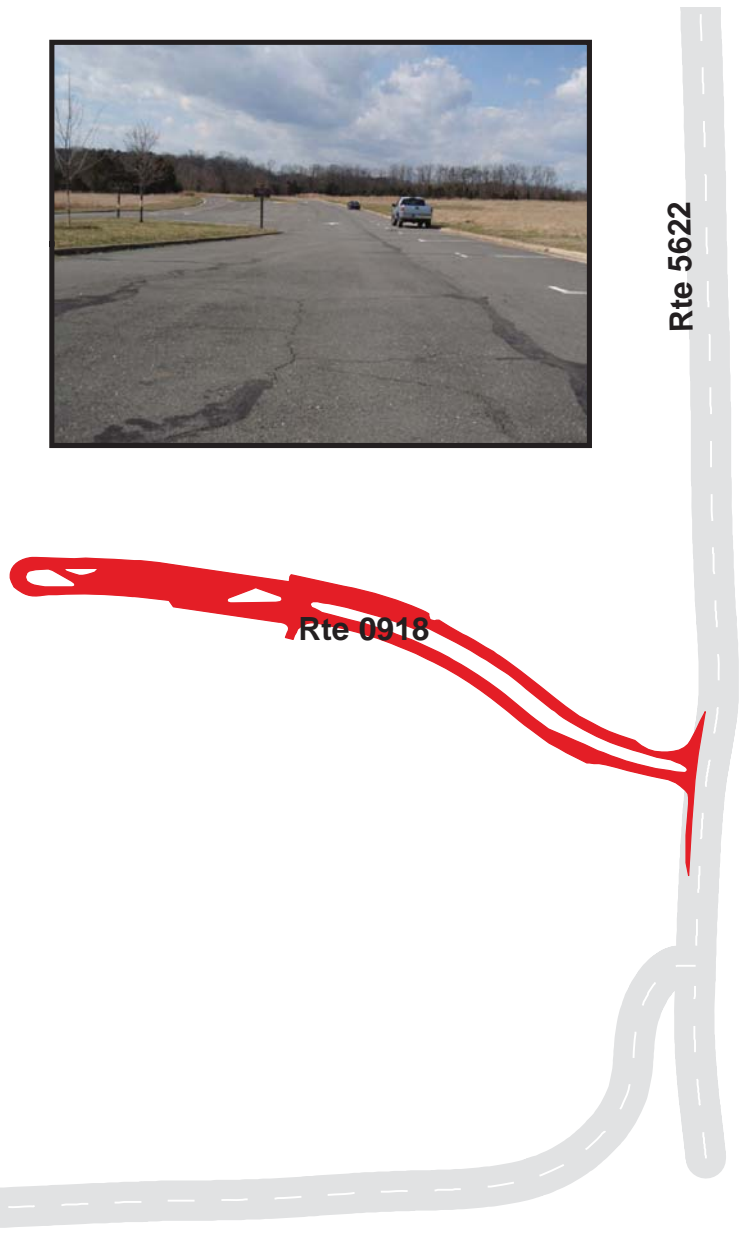
Route 0918

BROWNSVILLE PICNIC AREA PARKING

FROM ROUTE 5622 (STATE ROUTE 622 (FEATHERBED / GROVETON ROAD))
TO PARKING

Route Number	Public / NonPublic	Date Visited	Area (sq ft)	Lane Miles *	Surface Type
0918	PUBLIC	3/13/2012	113,332	1.95	AS
Culverts	Drop Inlets	Gates	Curb & Gutter	Curb	PCR
1	10	2	CONCRETE CURB AND GUTTER	CONCRETE CURB	POOR/45

* Lane miles are based on 11' lane widths



MANASSAS NATIONAL BATTLEFIELD PARK

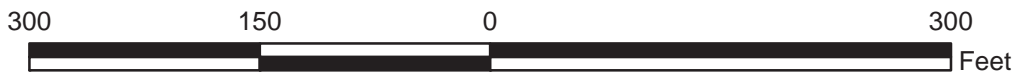
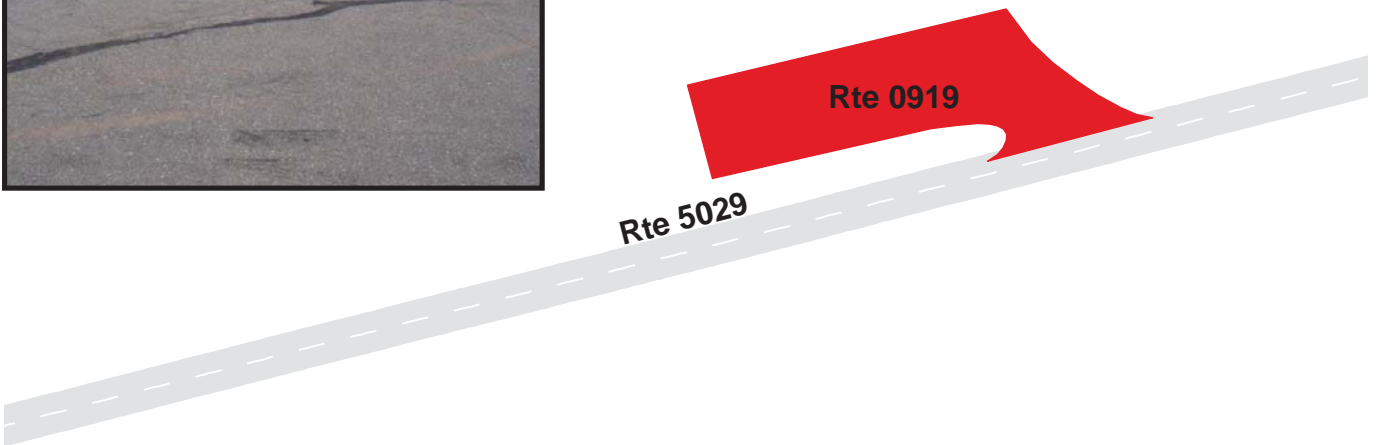
Route 0919

GROVETON CEMETERY PARKING

FROM ROUTE 5029 (U.S. HIGHWAY 29 (LEE HIGHWAY))
TO PARKING

Route Number	Public / NonPublic	Date Visited	Area (sq ft)	Lane Miles *	Surface Type
0919	PUBLIC	3/13/2012	13,278	0.23	AS
Culverts	Drop Inlets	Gates	Curb & Gutter	Curb	PCR
0	0	0	NO CURB AND GUTTER	NO CURB	POOR/45

* Lane miles are based on 11' lane widths



MANASSAS NATIONAL BATTLEFIELD PARK

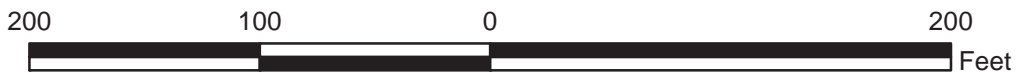
Route 0920

NEW YORK 5TH AND 10TH PARKING

ADJACENT TO ROUTE 0014 (NEW YORK AVENUE) ON RIGHT

Route Number	Public / NonPublic	Date Visited	Area (sq ft)	Lane Miles *	Surface Type
0920	PUBLIC	3/13/2012	2,844	0.05	AS
Culverts	Drop Inlets	Gates	Curb & Gutter	Curb	PCR
0	0	0	NO CURB AND GUTTER	CONCRETE CURB	POOR/45

* Lane miles are based on 11' lane widths



MANASSAS NATIONAL BATTLEFIELD PARK

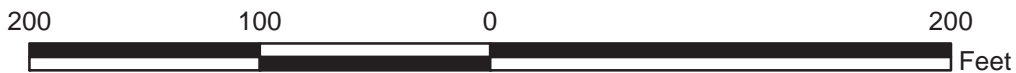
Route 0921

BROOKLYN 14TH PARKING

ADJACENT TO ROUTE 0014 (NEW YORK AVENUE) ON RIGHT

Route Number	Public / NonPublic	Date Visited	Area (sq ft)	Lane Miles *	Surface Type
0921	PUBLIC	3/13/2012	2,176	0.04	AS
Culverts	Drop Inlets	Gates	Curb & Gutter	Curb	PCR
0	0	0	NO CURB AND GUTTER	CONCRETE CURB	POOR/45

* Lane miles are based on 11' lane widths



MANASSAS NATIONAL BATTLEFIELD PARK

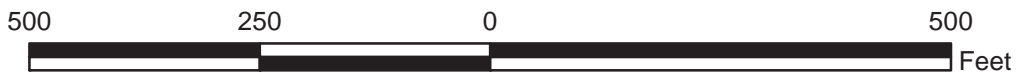
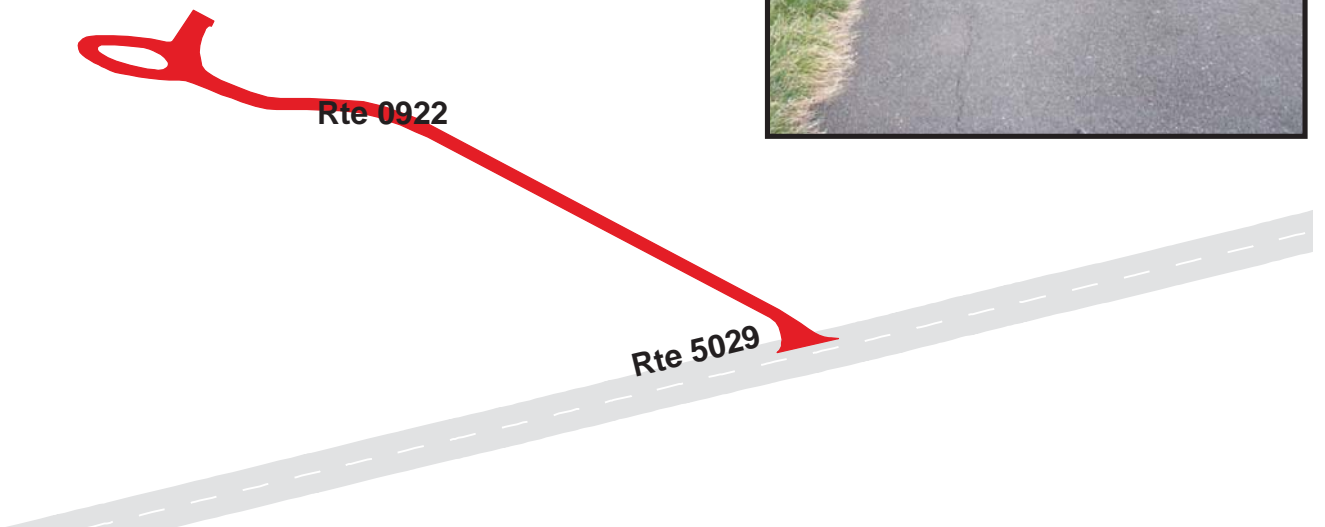
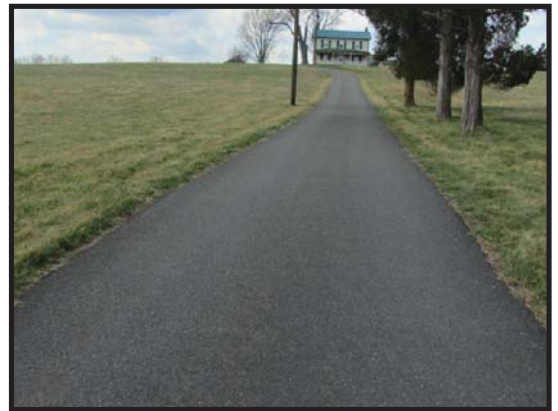
Route 0922

ROSEFIELD SITE PARKING

FROM ROUTE 5029 (U.S. HIGHWAY 29 (LEE HIGHWAY))
TO PARKING

Route Number	Public / NonPublic	Date Visited	Area (sq ft)	Lane Miles *	Surface Type
0922	PUBLIC	3/13/2012	11,105	0.19	AS
Culverts	Drop Inlets	Gates	Curb & Gutter	Curb	PCR
0	0	1	NO CURB AND GUTTER	NO CURB	FAIR/73

* Lane miles are based on 11' lane widths



MANASSAS NATIONAL BATTLEFIELD PARK

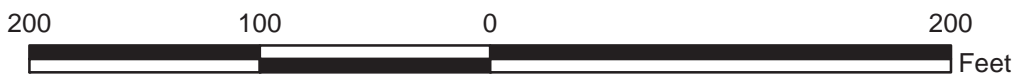
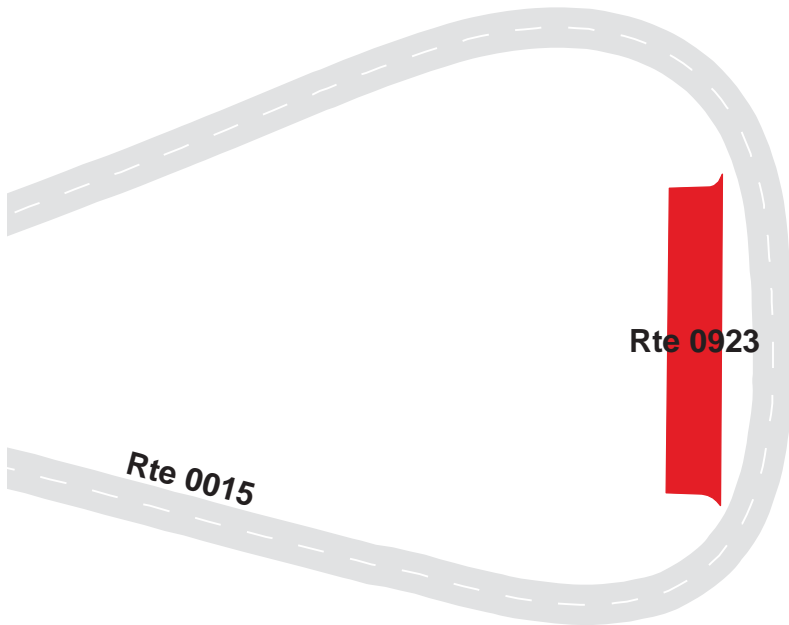
Route 0923

BRAWNER FARM WEST PARKING

ADJACENT TO ROUTE 0015 (BRAWNER FARM ACCESS ROAD) ON LEFT

Route Number	Public / NonPublic	Date Visited	Area (sq ft)	Lane Miles *	Surface Type
0923	PUBLIC	3/13/2012	2,439	0.04	AS
Culverts	Drop Inlets	Gates	Curb & Gutter	Curb	PCR
0	0	0	NO CURB AND GUTTER	NO CURB	GOOD/90

* Lane miles are based on 11' lane widths



Section 8
Parkwide/Route
Maintenance Features Summaries



Manassas National Battlefield Park



Federal Lands Highway
Road Inventory Program

MANA: PARKWIDE MAINTENANCE FEATURES SUMMARY

Includes DCV, MRL, MRP & PKG routes collected in Cycle-5

Notice: Culverts and drop inlets were marked by NPS and inventoried by RIP in Cycle 5 on all DCV driven routes. Culverts, drop inlets, and gates were also collected on all Manually Rated Routes and Paved Parking areas. Those totals are reflected below.

FEATURE	LINEAR FEET	COUNT
BRIDGE	--	0
CATTLE GUARD	--	0
CULVERT	--	41
CURB	0	--
DROP INLET	--	10
GATE	--	22
GUARD/GUIDE RAIL	0	--
CABLE	0	--
NON-CABLE	0	--
GUARD/GUIDE WALL	0	--
BOLLARD	0	--
TEMPORARY BARRIER	0	--
NON TEMP/BOLLARD	0	--
INTERSECTION	--	35
LOW WATER CROSSING	0	0
MILE MARKER	--	0
OVERPASS	--	0
PARK BOUNDARY	--	0
PAVED DITCH	0	--
PULLOUT	787	6
RAILROAD CROSSING	--	0
RETAINING WALL	0	0
SIGN	--	60
STATE BOUNDARY	--	0
TRAFFIC LIGHT	--	0
TUNNEL	0	0

MANA: DCV ROUTE MAINTENANCE FEATURES SUMMARY

Notice: Culverts and drop inlets were marked by NPS and inventoried by RIP in Cycle 5.

FEATURE	ROUTE 0011 SOUTH CHINN RIDGE ROAD	ROUTE 0012 NORTH CHINN RIDGE ROAD	ROUTE 0014 NEW YORK AVENUE	ROUTE 0015 BRAWNER FARM ACCESS ROAD	ROUTE 0415 VISITOR PROTECTION ACCESS ROAD	UNIT
BRIDGE	0	0	0	0	0	EACH
CATTLE GUARD	0	0	0	0	0	EACH
CULVERT	1	20	4	2	3	EACH
CURB	0	0	0	0	0	LINEAR FEET
DROP INLET	0	0	0	0	0	EACH
GATE	0	2	2	1	1	EACH
GUARD/GUIDE RAIL	0	0	0	0	0	LINEAR FEET
CABLE	0	0	0	0	0	LINEAR FEET
NON-CABLE	0	0	0	0	0	LINEAR FEET
GUARD/GUIDE WALL	0	0	0	0	0	LINEAR FEET
BOLLARD	0	0	0	0	0	LINEAR FEET
TEMPORARY BARRIER	0	0	0	0	0	LINEAR FEET
NON TEMP/BOLLARD	0	0	0	0	0	LINEAR FEET
INTERSECTION	3	8	7	8	9	EACH
LOW WATER CROSSING	0	0	0	0	0	EACH
LOW WATER CROSSING	0	0	0	0	0	LINEAR FEET
MILE MARKER	0	0	0	0	0	EACH
OVERPASS	0	0	0	0	0	EACH
PARK BOUNDARY	0	0	0	0	0	EACH
PAVED DITCH	0	0	0	0	0	LINEAR FEET
PULLOUT	1	0	0	2	3	EACH
PULLOUT	148	0	0	206	433	LINEAR FEET
RAILROAD CROSSING	0	0	0	0	0	EACH
RETAINING WALL	0	0	0	0	0	EACH
RETAINING WALL	0	0	0	0	0	LINEAR FEET
SIGN	4	26	9	10	11	EACH
STATE BOUNDARY	0	0	0	0	0	EACH
TRAFFIC LIGHT	0	0	0	0	0	EACH
TUNNEL	0	0	0	0	0	EACH
TUNNEL	0	0	0	0	0	LINEAR FEET

STRUCTURE LIST

No data available for this section.

Section 9
Route Maintenance Features
Road Logs



Manassas National Battlefield Park



**Federal Lands Highway
Road Inventory Program**

MANA: ROUTE MAINTENANCE FEATURES ROAD LOG

ROUTE 0011: SOUTH CHINN RIDGE ROAD

Notice: Culverts and drop inlets were marked by NPS and inventoried by RIP in Cycle 5 on all paved routes.

FROM MILEPOST	TO MILEPOST	FEATURE	SIDE	COMMENT
0.000	0.000	ROUTE BEGIN	N/A	FROM ROUTE 0012 (NORTH CHINN RIDGE ROAD)
0.000	0.000	INTERSECTION	RIGHT	ROUTE 0012 (NORTH CHINN RIDGE ROAD)
0.000	0.000	INTERSECTION	N/A	ROUTE 0012 (NORTH CHINN RIDGE ROAD)
0.003	0.003	SIGN	LEFT	REGULATORY, GRAPHIC SIGN NO TEXT
0.018	0.046	PULLOUT	LEFT	N/A
0.034	0.034	SIGN	LEFT	GUIDE, UNABLE TO READ FROM VIDEO
0.034	0.034	SIGN	LEFT	GUIDE, UNABLE TO READ FROM VIDEO
0.180	0.180	CULVERT	N/A	N/A
0.184	0.184	INTERSECTION	N/A	ROUTE 0904 (SOUTH CHINN RIDGE PARKING)
0.184	0.184	SIGN	LEFT	GUIDE, HAZEL PLAIN
0.184	0.184	ROUTE END	N/A	TO ROUTE 0904 (SOUTH CHINN RIDGE PARKING)

MANA: ROUTE MAINTENANCE FEATURES ROAD LOG

ROUTE 0012: NORTH CHINN RIDGE ROAD

Notice: Culverts and drop inlets were marked by NPS and inventoried by RIP in Cycle 5 on all paved routes.

FROM MILEPOST	TO MILEPOST	FEATURE	SIDE	COMMENT
0.000	0.000	ROUTE BEGIN	N/A	FROM ROUTE 5234 (STATE ROUTE 234 (SUDLEY ROAD))
0.000	0.000	INTERSECTION	LEFT	ROUTE 5234 (STATE ROUTE 234 (SUDLEY ROAD))
0.000	0.000	INTERSECTION	RIGHT	ROUTE 5234 (STATE ROUTE 234 (SUDLEY ROAD))
0.000	0.000	SIGN	LEFT	GUIDE, VISITOR CENTER MANASSAS NATIONAL BATTLEFIELD PARK
0.000	1.204	ONE-WAY	N/A	N/A
0.004	0.004	SIGN	RIGHT	GUIDE, CHINN RIDGE
0.005	0.005	GATE	N/A	N/A
0.006	0.006	SIGN	RIGHT	WARNING, GRAPHIC SIGN NO TEXT
0.006	0.006	SIGN	RIGHT	GUIDE, PARK GROUNDS OPEN DAYLIGHT HOURS ONLY
0.006	0.006	SIGN	LEFT	WARNING, GRAPHIC SIGN NO TEXT
0.007	0.007	SIGN	LEFT	REGULATORY, NO PARKING
0.017	0.017	SIGN	RIGHT	GUIDE, PAY PARK ENTRANCE FEE AT THE VISITORS CENTER
0.017	0.017	SIGN	RIGHT	REGULATORY, ENTRANCE ONLY
0.045	0.045	CULVERT	N/A	N/A
0.065	0.065	INTERSECTION	LEFT	UNPAVED ROUTE
0.078	0.078	SIGN	RIGHT	REGULATORY, SPEED LIMIT 25
0.089	0.089	INTERSECTION	LEFT	ROUTE 0903 (NORTH CHINN INTERPRETIVE PARKING)
0.124	0.124	CULVERT	N/A	N/A
0.156	0.156	SIGN	RIGHT	REGULATORY, PARK IN DESIGNATED AREAS ONLY
0.280	0.280	CULVERT	N/A	N/A
0.282	0.282	CULVERT	N/A	N/A
0.284	0.284	CULVERT	N/A	N/A
0.310	0.310	CULVERT	N/A	N/A
0.325	0.325	SIGN	RIGHT	GUIDE, UNABLE TO READ FROM VIDEO
0.340	0.340	CULVERT	N/A	N/A
0.360	0.360	CULVERT	N/A	N/A
0.454	0.454	CULVERT	N/A	N/A
0.507	0.507	CULVERT	N/A	N/A
0.533	0.533	CULVERT	N/A	N/A

MANA: ROUTE MAINTENANCE FEATURES ROAD LOG

ROUTE 0012: NORTH CHINN RIDGE ROAD

Notice: Culverts and drop inlets were marked by NPS and inventoried by RIP in Cycle 5 on all paved routes.

FROM MILEPOST	TO MILEPOST	FEATURE	SIDE	COMMENT
0.595	0.595	CULVERT	N/A	N/A
0.629	0.629	CULVERT	N/A	N/A
0.643	0.643	SIGN	LEFT	REGULATORY, DO NOT ENTER
0.646	0.646	INTERSECTION	RIGHT	ROUTE 0011 (SOUTH CHINN RIDGE ROAD)
0.647	0.647	SIGN	RIGHT	REGULATORY, STOP
0.648	0.648	SIGN	N/A	REGULATORY, GRAPHIC SIGN NO TEXT
0.648	0.648	SIGN	N/A	REGULATORY, TOUR
0.649	0.649	SIGN	RIGHT	WARNING, GRAPHIC SIGN NO TEXT
0.653	0.653	CULVERT	N/A	N/A
0.654	0.654	CULVERT	N/A	N/A
0.670	0.670	INTERSECTION	LEFT	UNPAVED ROUTE
0.688	0.688	CULVERT	N/A	N/A
0.758	0.758	CULVERT	N/A	N/A
0.862	0.862	CULVERT	N/A	N/A
1.032	1.032	CULVERT	N/A	N/A
1.181	1.181	CULVERT	N/A	N/A
1.183	1.183	SIGN	RIGHT	REGULATORY, NO PARKING
1.183	1.183	SIGN	LEFT	WARNING, GRAPHIC SIGN NO TEXT
1.184	1.184	SIGN	LEFT	REGULATORY, ROAD CLOSED
1.184	1.184	SIGN	RIGHT	WARNING, GRAPHIC SIGN NO TEXT
1.185	1.185	GATE	N/A	N/A
1.204	1.204	SIGN	LEFT	REGULATORY, DO NOT ENTER
1.204	1.204	SIGN	RIGHT	REGULATORY, UNABLE TO READ FROM VIDEO
1.204	1.204	SIGN	RIGHT	REGULATORY, TOUR
1.204	1.204	SIGN	RIGHT	REGULATORY, STOP
1.204	1.204	SIGN	RIGHT	REGULATORY, GRAPHIC SIGN NO TEXT
1.204	1.204	SIGN	RIGHT	REGULATORY, DO NOT ENTER
1.204	1.204	INTERSECTION	RIGHT	ROUTE 5234 (STATE ROUTE 234 (SUDLEY ROAD))
1.204	1.204	INTERSECTION	LEFT	ROUTE 5234 (STATE ROUTE 234 (SUDLEY ROAD))
1.204	1.204	ROUTE END	N/A	TO ROUTE 5234 (STATE ROUTE 234 (SUDLEY ROAD))

MANA: ROUTE MAINTENANCE FEATURES ROAD LOG

ROUTE 0014: NEW YORK AVENUE

Notice: Culverts and drop inlets were marked by NPS and inventoried by RIP in Cycle 5 on all paved routes.

FROM MILEPOST	TO MILEPOST	FEATURE	SIDE	COMMENT
0.000	0.000	ROUTE BEGIN	N/A	FROM ROUTE 5029 (U.S. HIGHWAY 29 (LEE HIGHWAY))
0.000	0.000	INTERSECTION	RIGHT	ROUTE 5029 (U.S. HIGHWAY 29 (LEE HIGHWAY))
0.000	0.000	CULVERT	N/A	N/A
0.000	0.000	INTERSECTION	LEFT	ROUTE 5029 (U.S. HIGHWAY 29 (LEE HIGHWAY))
0.002	0.002	GATE	N/A	N/A
0.004	0.004	SIGN	LEFT	REGULATORY, STOP
0.013	0.013	SIGN	RIGHT	GUIDE, NEW YORK AVE
0.013	0.013	SIGN	RIGHT	REGULATORY, 9
0.020	0.020	SIGN	RIGHT	GUIDE, PARK GROUNDS OPEN DAYLIGHT HOURS ONLY
0.020	0.020	SIGN	RIGHT	GUIDE, PAY PARK ENTRANCE FEE AT THE VISITORS CENTER
0.033	0.033	INTERSECTION	RIGHT	ROUTE 0921 (BROOKLYN 14TH PARKING)
0.046	0.046	GATE	N/A	N/A
0.047	0.047	SIGN	LEFT	REGULATORY, GRAPHIC SIGN NO TEXT
0.047	0.047	SIGN	RIGHT	REGULATORY, GRAPHIC SIGN NO TEXT
0.048	0.048	SIGN	RIGHT	REGULATORY, NO PARKING
0.049	0.049	SIGN	RIGHT	REGULATORY, ROAD CLOSED
0.050	0.050	CULVERT	N/A	N/A
0.143	0.143	CULVERT	N/A	N/A
0.242	0.242	INTERSECTION	LEFT	ROUTE 0014 (NEW YORK AVENUE)
0.276	0.276	CULVERT	N/A	N/A
0.319	0.319	INTERSECTION	RIGHT	ROUTE 0920 (NEW YORK 5TH AND 10TH PARKING)
0.331	0.331	INTERSECTION	LEFT	ROUTE 0014 (NEW YORK AVENUE)
0.331	0.331	INTERSECTION	N/A	ROUTE 0014 (NEW YORK AVENUE)
0.331	0.331	ROUTE END	N/A	TO END OF LOOP

MANA: ROUTE MAINTENANCE FEATURES ROAD LOG

ROUTE 0015: BRAWNER FARM ACCESS ROAD

Notice: Culverts and drop inlets were marked by NPS and inventoried by RIP in Cycle 5 on all paved routes.

FROM MILEPOST	TO MILEPOST	FEATURE	SIDE	COMMENT
0.000	0.000	ROUTE BEGIN	N/A	FROM ROUTE 5705A (STATE ROUTE 705 (PAGELAND LANE (NORTH)))
0.000	0.000	INTERSECTION	LEFT	ROUTE 5705A (STATE ROUTE 705 (PAGELAND LANE (NORTH)))
0.000	0.000	INTERSECTION	RIGHT	ROUTE 5705A (STATE ROUTE 705 (PAGELAND LANE (NORTH)))
0.002	0.002	CULVERT	N/A	N/A
0.006	0.006	SIGN	LEFT	REGULATORY, STOP
0.006	0.006	SIGN	LEFT	REGULATORY, UNABLE TO READ FROM VIDEO
0.011	0.011	SIGN	LEFT	GUIDE, UNABLE TO READ FROM VIDEO
0.013	0.013	GATE	N/A	N/A
0.209	0.209	INTERSECTION	LEFT	ROUTE 0015 (BRAWNER FARM ACCESS ROAD)
0.243	0.243	INTERSECTION	LEFT	ROUTE 0015 (BRAWNER FARM ACCESS ROAD) SPUR
0.253	0.253	CULVERT	N/A	N/A
0.298	0.298	SIGN	RIGHT	GUIDE, RESERVED PARKING
0.301	0.318	PULLOUT	RIGHT	N/A
0.307	0.307	SIGN	RIGHT	GUIDE, UNABLE TO READ FROM VIDEO
0.307	0.307	SIGN	RIGHT	WARNING, GRAPHIC SIGN NO TEXT
0.308	0.308	SIGN	RIGHT	REGULATORY, UNABLE TO READ FROM VIDEO
0.313	0.313	INTERSECTION	LEFT	ROUTE 0923 (BRAWNER FARM WEST PARKING)
0.323	0.323	SIGN	RIGHT	GUIDE, RESERVED PARKING
0.348	0.348	SIGN	RIGHT	GUIDE, RESERVED PARKING
0.352	0.374	PULLOUT	RIGHT	N/A
0.356	0.356	SIGN	RIGHT	GUIDE, RESERVED PARKING
0.388	0.388	INTERSECTION	LEFT	ROUTE 0015 (BRAWNER FARM ACCESS ROAD) SPUR
0.416	0.416	INTERSECTION	LEFT	ROUTE 0015 (BRAWNER FARM ACCESS ROAD)
0.416	0.416	INTERSECTION	N/A	ROUTE 0015 (BRAWNER FARM ACCESS ROAD)
0.416	0.416	ROUTE END	N/A	TO END OF LOOP

MANA: ROUTE MAINTENANCE FEATURES ROAD LOG

ROUTE 0415: VISITOR PROTECTION ACCESS ROAD

Notice: Culverts and drop inlets were marked by NPS and inventoried by RIP in Cycle 5 on all paved routes.

FROM MILEPOST	TO MILEPOST	FEATURE	SIDE	COMMENT
0.000	0.000	ROUTE BEGIN	N/A	FROM ROUTE 5029 (U.S. HIGHWAY 29 (LEE HIGHWAY))
0.000	0.000	INTERSECTION	LEFT	ROUTE 5029 (U.S. HIGHWAY 29 (LEE HIGHWAY))
0.000	0.000	INTERSECTION	RIGHT	ROUTE 5029 (U.S. HIGHWAY 29 (LEE HIGHWAY))
0.001	0.001	CULVERT	N/A	N/A
0.005	0.005	GATE	N/A	N/A
0.006	0.006	SIGN	LEFT	REGULATORY, STOP
0.006	0.006	SIGN	RIGHT	REGULATORY, GRAPHIC SIGN NO TEXT
0.006	0.006	SIGN	RIGHT	REGULATORY, UNABLE TO READ FROM VIDEO
0.007	0.007	SIGN	RIGHT	REGULATORY, NO PARKING
0.013	0.027	PULLOUT	RIGHT	N/A
0.155	0.167	PULLOUT	RIGHT	N/A
0.162	0.162	SIGN	RIGHT	REGULATORY, GRAPHIC SIGN NO TEXT
0.183	0.183	CULVERT	N/A	N/A
0.218	0.218	SIGN	RIGHT	WARNING, CAUTION TWO WAY TRAFFIC AHEAD
0.218	0.218	SIGN	RIGHT	WARNING, SLOW
0.229	0.285	PULLOUT	RIGHT	N/A
0.234	0.234	SIGN	RIGHT	REGULATORY, ALL TRAFFIC
0.319	0.319	SIGN	LEFT	WARNING, SLOW
0.319	0.319	SIGN	LEFT	WARNING, CAUTION TWO WAY TRAFFIC AHEAD
0.353	0.353	INTERSECTION	RIGHT	ROUTE 0405 (MULLIKEN DRIVEWAY)
0.390	0.390	CULVERT	N/A	N/A
0.434	0.434	INTERSECTION	RIGHT	UNPAVED ROUTE
0.480	0.480	INTERSECTION	LEFT	ROUTE 0415 (VISITOR PROTECTION ACCESS ROAD)
0.512	0.512	INTERSECTION	RIGHT	ROUTE 0908 (VISITOR PROTECTION PARKING)
0.523	0.523	INTERSECTION	RIGHT	ROUTE 0908 (VISITOR PROTECTION PARKING)
0.547	0.547	SIGN	RIGHT	REGULATORY, UNABLE TO READ FROM VIDEO
0.574	0.574	INTERSECTION	LEFT	ROUTE 0415 (VISITOR PROTECTION ACCESS ROAD)
0.574	0.574	INTERSECTION	RIGHT	ROUTE 0415 (VISITOR PROTECTION ACCESS ROAD)
0.574	0.574	ROUTE END	N/A	TO END OF LOOP

Section 10 Appendix



Manassas National Battlefield Park



Federal Lands Highway
Road Inventory Program

Explanation of Changes to the RIP Index Equations and Determination of PCR

In 2005, the FHWA began implementing the use of a Pavement Management System to assist the National Park Service in prioritizing Pavement Maintenance and Rehabilitation activities. The PMS used by FHWA is the Highway Pavement Management Application (HPMA) and this software has the ability to store inventory and condition data from RIP and forecast future performance using prediction models. Outputs include performance and condition reports at the National, Region, Park, or Route level. A regional prioritized list and optimization have been produced for most regions and the Federal Highway Deferred Maintenance is calculated via the HPMA as well.

In an effort to improve the accuracy of treatment recommendations and pavement condition descriptions in relation to the distresses and indexes that comprise the Pavement Condition Rating (PCR), an extensive study was completed throughout 2010 that resulted in changes to the Road Inventory Program condition reporting method and specifically, the calculation of PCR. It was determined that a better representation of PCR could be achieved by modifying the relative impact certain distresses would have on the overall rating.

Through the use of HPMA data, it was noted that false failure indicators existed with the existing PCR model, and that it would be necessary to reduce their impact. The distresses affected in this way were Rutting and Roughness. Conversely, experience showed that roadways with extensive cracking present were often shown to have a high PCR. Therefore, the crack index models were adjusted to be more sensitive to changes in crack severity or quantity. It was also determined that these issues were not due to a problem with data acquisition (i.e. the RIP “van”), but with the way the collected data was processed. The final change was to provide guidance on when to use the Roughness Condition Index (RCI) in the PCR calculation. Roughness data is of little value to determining overall condition on routes that, due to their length or geometrics, have lower vehicle operating speeds. Therefore, in Cycle 5, only routes that have lengths of one half mile or greater and posted speed limits of 25 mph or greater will have RCI reported and included in the PCR calculations.

The changes that were implemented were endorsed by management at both the FHWA and NPS. In order to show the effectiveness of these changes, several sites were ground truth tested to ensure that an improvement was achieved between the relationship of PCR and the actual Maintenance and Rehabilitation needs that were represented. These changes will allow greater use of RIP and HPMA data for not simply condition data reporting, but also as a reliable tool for project identification and selection.

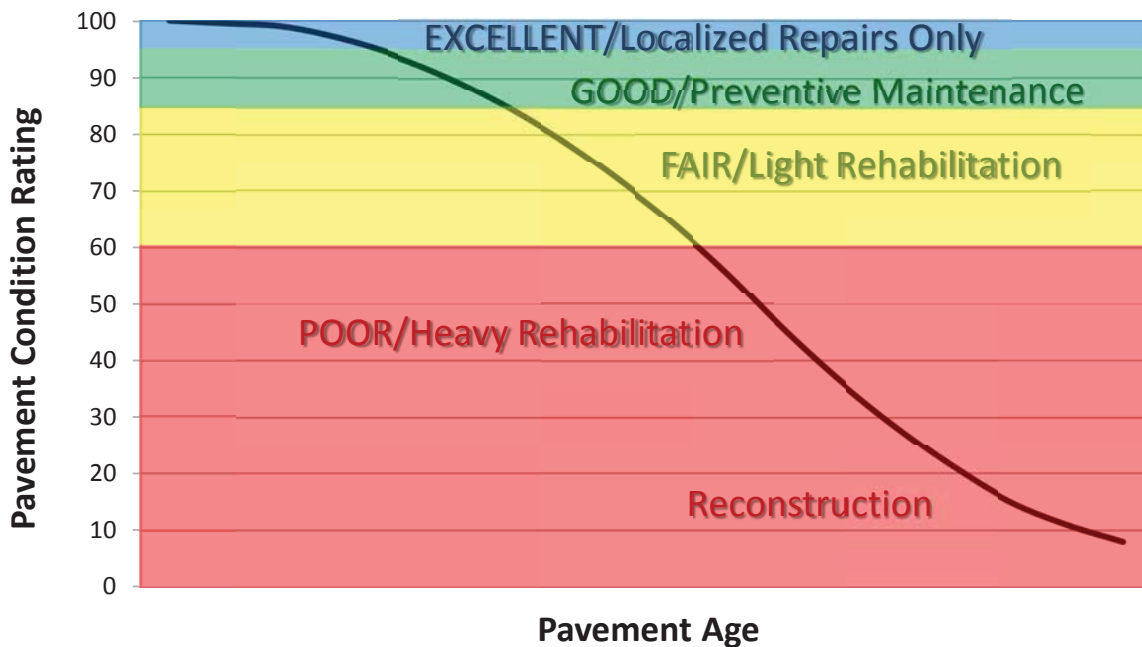
Explanation of the Excellent, Good, Fair and Poor Condition Descriptions

In addition to the RIP Index changes that were implemented in Cycle 5, we will provide greater assistance in translating good/fair/poor categories into pavement needs categories. The PCR can be used to indicate the place in the Pavement Life Cycle and the types of treatments that should be considered now and into the future.

- Excellent/New: PCR of 95-100. Pavements in this range will require only spot repairs.
- Good: PCR of 85-94. Pavements in this range will likely be candidates for Preventive Maintenance. Examples include Chip and Slurry Seals, Micro Surfacing and Thin Overlays.
- Fair: PCR of 61-84. Pavements in this range will likely be candidates of Light Rehabilitation (L3R). Examples include single-lift overlays up to 2.5 inches in total thickness, milling and overlays.
- Poor: PCR of 60 or below. Pavements in this range will likely be candidates of Heavy Rehabilitation or Reconstruction (H3R or 4R). Examples include Pulverization, Multiple Lift Overlays, and Reconstruction.

Specific Maintenance and Rehabilitation activities should be evaluated and recommended at the project level. Site-specific conditions that influence treatment type should be determined based on performing a subsurface investigation and/or pavement condition survey, and not be based solely on RIP data. Additionally, RIP produces a snapshot of conditions the year in which the data was collected. For further information or to obtain additional Pavement Management System's data from our Highway Pavement Management Application (HPMA) please contact the Eastern Federal Lands pavement team.

Condition Categories and Treatments



DESCRIPTION OF RATING SYSTEM

The Federal Highway Administration (FHWA), National Park Service Road Inventory Program (NPS-RIP), collects condition data on paved roads, parkways, and parking areas in park units nationwide. Road surface condition data is collected using an automated Data Collection Vehicle (DCV). Roads having brick, cobblestone, or wood surfaces are not normally surveyed with the DCV, but are manually rated for the purpose of assigning a condition rating. Unpaved roads, parkways, and parking areas are not currently being evaluated for condition. Paved campground pads and driveways are also not currently being evaluated for condition.

The FHWA RIP is implemented based on the premise that an accurate pavement surface condition assessment can be accomplished using automated crack detection technology as applied to digital images. Various methods of pavement condition assessment have been developed over the years with varying degrees of accuracy and acceptance. The use of digital photography to record pavement images and subsequent crack detection and classification has undergone continuous improvements over the past decade. Digital cameras with increasingly superior resolution and high definition have become more affordable, and the proprietary programming code and algorithms have been improved in crack detection software.

With the use of high quality digital photography and automated crack detection software, FHWA RIP is tasked with executing a pavement condition assessment on about 5000 miles of National Park Service roads and parkways. Foremost in setting up the basis of pavement distress identification is employing the distress identification protocols used by FHWA. There is no single distress identification system that is universal among entities conducting a program of distress identification. For the purpose of the NPS-RIP, FHWA employs distress identification protocols that are specific to this program.

FHWA has referenced the “*Distress Identification Manual for the Long-Term Pavement Performance Program*”, Publication No. FHWA-RD 03-031, June 2003, as the point-of-reference for distress types on NPS pavement. The FHWA RIP distress types are similar to those described in the LTPP manual with some modifications. The document, “*Distress Identification Manual for the NPS Road Inventory Program, Cycle 5, 2010-2013*” was developed using the “*Distress Identification Manual for the Long-Term Pavement Performance Program*” as a guideline. Definitions of severity levels based on crack width contained in this document adhere to the LTPP Distress ID Manual. Modifications have been made to the definition of Alligator and Longitudinal Cracking and determination of Alligator Cracking severity. This manual also addresses Rutting and Roughness and its application to NPS-RIP.

In 2010, FHWA RIP began the fifth cycle of data collection in national parks. For Cycle 5, data will be collected in approximately 81 large parks (10 or more paved route miles) on Functional Class 1, 2, and 7 routes plus any new routes or parking areas previously not collected, totaling an estimated 4,459 paved route miles. Additionally, 231 small parks will be collected comprising approximately 529 paved route miles and associated paved parking areas. The data is used to support the National Park Service road maintenance program and Pavement Management System (PMS) developed and maintained by FHWA.

This “*Distress Identification Manual for the NPS Road Inventory Program, Cycle 5, 2010-2013*” will be used as a reference resource in crack detection and classification, determination of distress severity and extent, and in the calculation of distress index values for the FHWA RIP Cycle 5.

SURFACE DISTRESSES

Surface Condition Rating - SCR

Surface distresses are measured in the primary lane only. In the classification and measurement of all paved surface condition data, results will be reported in the database in record intervals of 0.02 miles (105.6 feet) (smallest granularity) along the route.

Surface distresses determined from digital images

- Transverse Cracks
- Longitudinal Cracks
- Alligator Cracks
- Patching/Potholes

Surface distress measured by DCV (Data Collection Vehicle) LRMS (Laser Rut Measuring System)

- Rutting

Each of the five surface distresses is assigned a computed surface distress index

- Transverse Crack Index
- Longitudinal Crack Index
- Alligator Crack Index
- Patching/Pothole Index
- Rutting Index

Surface distress data are classified as listed above, measured for severity, and quantified for extent. Classification, severity, and extent of these five surface distresses comprise the three main elements for calculation of SCR (Surface Condition Rating).

In addition to the five surface distresses, a **Structural Crack Index** is computed, which is a combination of the Longitudinal Crack Index and the Alligator Crack Index. The Structural Crack Index is then used in lieu of the LC and AC indices to compute SCR.

Roughness Condition Index - RCI

Additional condition data measured by DCV (lasers and accelerometers)

- Roughness (IRI)

Roughness is measured by FHWA's DCV and reported as International Roughness Index (IRI) in inches/mile. Using IRI, the Roughness Condition Index (RCI) is computed.

Pavement Condition Rating - PCR

Using the SCR (computed from the five surface distresses) and the RCI, an overall Pavement Condition Rating (PCR) is computed. The formula for PCR is:

$$\text{Asphalt PCR} = (0.60 * \text{SCR}) + (0.40 * \text{RCI})$$

$$\text{Concrete PCR} = \text{RCI}$$

A detailed description of each distress index formula, roughness index formula, SCR and PCR is provided in this document beginning on page 8.

Each classified surface distress will fall into one or more *severity*...LOW, MEDIUM, or HIGH based on criteria listed. For each severity, an *extent* is established based on the measured quantity of the distress within that severity. Within each *severity* individual distresses are assigned a *Maximum Allowable Extent* (MAE). For example, LOW severity transverse cracking may be allowed up to 21.1 cracks within a 0.02 interval before it reaches MAE and fails.

The index formulas are based on a scale of 0-100. A PCR index value of 100 would indicate a “new” road with no measurable distresses or rough ride. A PCR value of 60 is determined to be *terminable serviceability* and the road is considered failed. The range of index values with condition descriptors is:

POOR (≤ 60), FAIR (61 - 84), GOOD (85 - 94), EXCELLENT (95 - 100)

Index values are generally computed based on cumulative deducts of the measured severities. As shown in the index formulas below, as any single severity reaches or exceeds MAE, the index computes to a value of 60 or less, and the road fails for that 0.02 interval.

Note: As a result of a unique combination of measured surface distresses and IRI, index values occasionally compute to less than 0 or greater than 100. In this instance, an index value < 0 defaults to 0. Index values > 100 default to 100. For all indices, a higher value indicates a better road condition, and a lower value indicates a poorer road condition.

On the following page, Table 1 summarizes the different types of distresses measured.

TABLE 1: Distress Summary

ASPHALT-SURFACED PAVEMENT DISTRESS TYPES with RUTTING and ROUGHNESS				
DISTRESS TYPE	UNIT OF MEASURE...	...CONVERTED TO	DEFINED SEVERITY LEVELS?	MEASURED BY
Alligator Cracking	Square Feet	Percent of Lane Per 0.02 Mile	Yes	Digital Image Crack Detection Software
Transverse Cracking	Linear Feet	Number of Cracks Per 0.02 Mile	Yes	Digital Image Crack Detection Software
Longitudinal Cracking	Linear feet	Percent of Lane Length Per 0.02 Mile	Yes	Digital Image Crack Detection Software
Patching/Potholes	Square Feet	Percent of Lane Per 0.02 Mile	No	Digital Image Crack Detection Software
Rutting	Inches	Rut Depth Per 0.02 Mile	Yes	DCV – Laser Rut Measuring System (LRMS)
Roughness	IRI	*RCI Per 0.02 Mile	No	DCV – Lasers /Accelerometers

***Note: Roughness is measured on concrete roadways, but surface distresses and rutting are not measured. For concrete, PCR = RCI**

ALLIGATOR CRACKING

Description

Alligator cracking is considered a combination of fatigue and block cracking. It is a series of interconnected cracks in various stages of development. Alligator cracking develops into a many-sided pattern that resembles chicken wire or alligator skin. It can occur anywhere in the road lane. Alligator cracking must have a quantifiable area.

Severity Levels

LOW

An area of cracks with no or very few interconnecting cracks and the cracks are not spalled. Cracks are ≤ 0.25 in (6mm) in mean width. Cracks in the pattern are no further apart than 1 foot (0.328 m). May be sealed cracks with sealant in good condition and a crack width that cannot be determined.

MEDIUM

An area of interconnected cracks that form a complete pattern. Cracks may be slightly spalled. Cracks are >0.25 in. (6 mm) and ≤ 0.75 in. (19 mm) or any crack with a mean width ≤ 19 mm and adjacent low severity cracking. Cracks in the pattern are no further apart than 6 in. (150 mm).

HIGH

An area of interconnected cracks forming a complete pattern. Cracks are moderately or severely spalled. Cracks are >0.75 in (19mm) or any crack with a mean width ≤ 0.75 in (19mm) and adjacent medium to high severity random cracking.

A combination of observed crack width and crack pattern is used to determine overall severity of alligator cracking. Based on above description of each severity, the highest level of crack width and crack pattern determines overall severity. Table 2 illustrates this.

TABLE 2: Alligator Crack Severity Levels

ALLIGATOR CRACKING SEVERITY LEVELS		Crack Pattern		
		LOW	MED	HIGH
Crack Width	LOW	L	M	H
	MED	M	M	H
	HI	H	H	H

LONGITUDINAL CRACKING

Description

Longitudinal cracking occurs predominantly parallel to the pavement centerline. It can occur anywhere within the lane. Longitudinal cracks occurring in the wheelpath may be noteworthy.

Severity Levels

LOW

Cracks with a mean width of < 0.25 in. (6 mm). Sealed cracks with sealant in good condition and a width that cannot be determined.

MED

Cracks with a mean width > 0.25 in. (6 mm) and ≤ 0.75 in. (19 mm). Also, any crack with a mean width < 0.75 in. (19 mm) and adjacent random low severity cracking.

HIGH

Cracks with a mean width > 0.75 in. (19 mm). Also, any crack with a mean width < 0.75 in. (19 mm) and adjacent random medium to high severity cracking.

TRANSVERSE CRACKING

Description

Transverse cracking occurs predominantly perpendicular to the pavement centerline. It can occur anywhere within the lane.

Severity Levels

LOW

Cracks with a mean width of < 0.25 in. (6 mm). Sealed cracks with sealant in good condition and a width that cannot be determined.

MED

Cracks with a mean width > 0.25 in. (6 mm) and ≤ 0.75 in. (19 mm). Also, any crack with a mean width < 0.75 in. (19 mm) and adjacent random low severity cracking.

HIGH

Cracks with a mean width > 0.75 in. (19 mm). Also, any crack with a mean width < 0.75 in. (19 mm) and adjacent random medium to high severity cracking.

PATCHING AND POTHOLES

Description

Patching is an area of pavement surface that has been removed and replaced with patching material or an area of pavement surface that has had additional patching material applied. Patching may encompass partial-lane or full-lane width. On full-lane width patching; the total, contiguous length of a patch may not exceed 0.30 mi. (0.48 km). Any full-lane width patch exceeding 0.30 mi. in length is considered a pavement change, not a patch for the purposes of distress analysis. Patching must have a quantifiable area.

Potholes are bowl-shaped holes of various sizes occurring in the pavement surface.

Severity Levels

There are no stratified severities for Patching/Potholes. They either are present or they are not.

RUTTING

Description

Rutting is a longitudinal surface depression in the wheelpath.

Severity Levels

LOW

Ruts with a measured depth $\geq 0.20''$ and $\leq 0.49''$

MED

Ruts with a measured depth $\geq 0.50''$ and $\leq 0.99''$

HIGH

Ruts with a measured depth $\geq 1.00''$

Ruts $< 0.20''$ are not included in the distress calculations.

ROUGHNESS

Description

Roughness is the measurement of the unevenness of the pavement in the direction of travel. It is measured in units of IRI (International Roughness Index), inches per mile, and is indicative of ride comfort.

Severity Levels

There are no stratified severity levels for roughness. The roughness (or smoothness) of a road surface can be defined by IRI in the following table.

TABLE 3: IRI

IRI Descriptions	
Type of Road	Typical IRI (in/mile)
New Road, no noticeable roughness	<90
Small level of roughness	90 – 126
Road of average roughness	126 – 190
Road with above average roughness	190 – 253
Road with severe roughness	253 – 380
Nearly impassable	>380

INDEX FORMULAS

Note: All index formulas listed below contain MAE applicable to 0.02 mile (105.6 feet) interval.

Alligator Crack Index

$$AC_INDEX = 100 - 40 * [(\%LOW / 35) + (\%MED / 15) + (\%HI / 5)]$$

Where:

The values *%LOW*, *%MED* and *%HI* report the percentage of the observed pavement (0.02 mile, primary lane) that contains alligator cracking within the respective severities. These values range from 0 to 100.

%LOW = Percent of total area (primary lane, 0.02 in length), low severity

%MED = Percent of total area (primary lane, 0.02 in length), medium severity

%HI = Percent of total area (primary lane, 0.02 in length), high severity

Percent of total area is computed as:

$$\frac{\text{square foot area of alligator crack severity}}{0.02 \text{ mile} * \text{lane width}}$$

In AC_INDEX, the denominators 35, 15, and 5 are the Maximum Allowable Extents (MAE) for each severity. In other words, we will allow up to 35% of low severity alligator cracking for a 0.02 interval before failure, 15% for medium severity, and so on. As you can see, if any single severity reaches MAE the resulting index value is 60, or failure.

Longitudinal Crack Index

$$LC_INDEX = 100 - 40 * [(\%LOW / 175) + (\%MED / 75) + (\%HI / 25)]$$

Where:

The values *%LOW*, *%MED*, and *%HI* report the length of longitudinal cracking within each severity as a percent of the section length (0.02 mile, primary lane).

These values are ≥ 0 and can exceed 100.

%LOW = Percent of interval length (primary lane, 0.02 in length), low severity

%MED = Percent of interval length (primary lane, 0.02 in length), medium severity

%HI = Percent of interval length (primary lane, 0.02 in length), high severity

Percent of interval length is computed as:

$$\frac{\text{length of respective longitudinal cracking}}{0.02 \text{ mile (105.6 feet)}}$$

In LC_INDEX, the denominators 175, 75, and 25 are the Maximum Allowable Extents (MAE) for each severity. In other words, we will allow up to 175% of low severity alligator cracking for a 0.02 interval before failure, 75% for medium severity, and so on. As you can see, if any single severity reaches MAE the resulting index value is 60, or failure.

Structural Crack Index

$$SC_INDEX = [100 - ((100 - AC_INDEX) + (100 - LC_INDEX))]$$

Structural Crack Index is a combination of Alligator Cracking and Longitudinal Cracking, and is used in the SCR formula in lieu of AC and LC separately.

Transverse Crack Index

$$TC_INDEX = 100 - 40 * [(LOW / 21.1) + (MED / 4.4) + (HI / 2.6)]$$

Where:

The values *LOW*, *MED* and *HI* report a count of the total number of transverse cracks (reported to three decimals) within each severity level, where one transverse crack is equal to the lane width. These values are ≥ 0 .

LOW = Number of cracks in interval (primary lane, 0.02 in length), low severity

MED = Number of cracks in interval (primary lane, 0.02 in length), medium severity

HI = Number of cracks in interval (primary lane, 0.02 in length), high severity

Number of cracks is computed as:

$$\frac{\text{Total length of transverse cracks}}{\text{Lane width}}$$

In TC_INDEX, the denominators 21.1, 4.4, and 2.6 are the Maximum Allowable Extents (MAE) for each severity. In other words, we will allow up to 21.1 low severity transverse cracks for a 0.02 interval before failure, 4.4 cracks for medium severity, and so on. As you can see, if any single severity reaches MAE the resulting index value is 60, or failure.

Patching Index

$$\text{PATCH_INDEX} = 100 - 40 * (\% \text{PATCHING} / 80)$$

Where:

The value *%PATCHING* reports the percentage of the observed pavement (0.02 mile, primary lane) that contains patching/potholes. This value ranges from 0 to 100.

%PATCHING = Percent of total area (primary lane, 0.02 in length)

Percent of total area is computed as:

$$\frac{\text{square foot area of patching/potholes}}{0.02 \text{ mile} * \text{lane width}}$$

There are no severity levels for patching. It either exists or does not.

In *PATCH_INDEX*, the denominator 80 is the Maximum Allowable Extent (MAE) for each severity. In other words, we will allow up to 80% patching for a 0.02 interval before failure. As you can see, if patching/potholes reaches MAE the resulting index value is 60, or failure.

Rutting Index

$$\text{RUT_INDEX} = 100 - 40 * [(\% \text{LOW} / 535) + (\% \text{MED} / 205) + (\% \text{HI} / 40)]$$

Where:

20 rut depth measurements are taken per 0.02 interval for each of 2 wheel paths (left and right), resulting in a total of 40 measurements taken for both wheel paths. *Each wheelpath is analyzed independently for rut severities.* The values *%LOW*, *%MED* and *%HI* are a *total percentage* of left wheelpath percentage and right wheelpath percentage added together for the respective severity. These values range from 0 to 200.

%LOW = Percent of LOW ruts in left wheelpath based on 20 ruts, plus percent of LOW ruts in right wheelpath based on 20 ruts.

%MED = Percent of MED ruts in left wheelpath based on 20 ruts, plus percent of MED ruts in right wheelpath based on 20 ruts.

%HI = Percent of HI ruts in left wheelpath based on 20 ruts, plus percent of HI ruts in right wheelpath based on 20 ruts.

Percent of rut measurements within each severity can also be computed as:

$$\frac{\text{total number of ruts within each severity in both wheelpaths}}{20} * 100$$

In *RUT_INDEX*, the denominators 535, 205, and 40 are the Maximum Allowable Extents for each severity. In other words, the formula allows up to 535% low severity

ruts for a 0.02 interval before. However, since 200 is the highest measurable percentage allowed, 535% is unattainable and therefore, no amount of LOW severity rutting will cause the RUT_INDEX to fail a road. Similarly, since the MAE for MED severity rutting is 205, no amount of MED severity rutting will cause the RUT_INDEX to reach 60 and fail the road. As you can see, LOW severity rutting reaches MAE the resulting index value is 60, or failure. This formula was intentionally designed to minimize the impact of LOW and MED severity rutting on RUT_INDEX.

Roughness Condition Index (Asphalt)

$$RCI = 32 * [5 * (2.718282 ^ {(-0.0041 * AVG IRI)})]$$

Where:

The value *AVG IRI* reports the average value of the Left IRI and Right IRI measurements for the interval (0.02 mile, primary lane). This value can range from approximately 40 to 999.0.

Average IRI is computed as:

$$\frac{\text{Left wheelpath IRI} + \text{Right wheelpath IRI}}{2}$$

There is no applicable threshold for failure for this index.

Roughness Condition Index (Concrete)

$$RCI = -0.0012(IRI^2) + 0.0499(IRI) + 99.542$$

For concrete, PCR = RCI

Surface Condition Rating Index

SCR = *Lowest* Index Value Of: [SC_INDEX, TC_INDEX, PATCH_INDEX, RUT_INDEX]

Note: The modified SCR equation above combines AC_INDEX and LC_INDEX, and considers that a single AC/LC index value of the Structural Crack Index (SC_INDEX). The lowest of the four computed index values (SC_INDEX, TC_INDEX, PATCH_INDEX, or RUT_INDEX) becomes the SCR.

Where:

See above for determinations of SC_INDEX, TC_INDEX, PATCH_INDEX and RUT_INDEX.

The threshold for failure for this index is SCR = 60.

Data Collection Vehicle Subsystems

Data on paved roads in Cycle 5 is collected by FHWA using a Pathway Services Inc. Data Collection Vehicle (DCV), called PathRunner. The DCV is driven in the primary-direction lane at posted speed limits and less.

CAMERAS

Forward-facing and rear-facing video is collected as .jpg digital imagery at a frequency of 26.4 feet.

Two forward-facing cameras are mounted above the vehicle cab, one pointed straight ahead and the other to the right shoulder providing seamless 120 degree viewing.

CAMERA SPECIFICATIONS	
Two Forward/ One Rear Facing	
Camera lens/type	FUJINON CCTV LENS H16x10B-Y41
Focal length	10 mm – 160 mm
Image size	8.8 mm x 6.6mm
Image format	*.jpg
Image resolution	HD 2000 X 1200
Image pixel size	depends on distance
Zoom ratio	16x
Max Relative Aperture	1:2.5
Iris range	F25-T800 (Equivalent to F800)

Pavement images are created using a Laser Scan Imaging System. This system is composed of a single high resolution line-scan camera and two lasers configured to image an approximate 11-foot wide lane with 1 mm resolution.

CAMERA SPECIFICATIONS	
Pavement Line Scan	
Image size	4280 pixels/line
Image width	4 meters (3950 mm nominal)
Laser class	3B
Power	250W
Vehicle speed limitations	62 mph
Environment	Dry pavement, day or night
Sensor size (approx)	300 mm(H) x 375 mm(L) x 200 mm(D)
Image frame length	26.4 feet

DMI (Distance Measuring Instrument)

The DMI (Distance Measuring Instrument) obtains road length measurements that are accurate to 0.1% for speeds up to 60 mph. The DMI is connected to the hub of the rear wheel on the driver's side, and is calibrated to the revolutions of the rear vehicle axle on a regular basis.

ROUGHNESS (IRI)

The collection system includes a South Dakota type laser profiler manufactured based on active Class 1 ASTM E950 standards. The dynamic profile of the pavement surface is collected from which the IRI roughness data is computed. The sensors include one accelerometer on each wheelpath, one height sensor (laser) on each wheelpath, and a distance transducer.

IRI SPECIFICATIONS	
Reported IRI units	Inches/mile
Vehicle speed limitations	12-62 mph
IRI equipment certification	Texas Transportation Institute (TTI)
Wavelengths accommodated	6 in. – 300 feet
IRI computed & reported	World Bank Technical Paper Number 46
Environment	Dry pavement, day or night, above 32 degrees F
Adherence to specifications	ASTM E950-98 (2004), ASTM E 1926-08, AASHTO MP 11-08, AASHTO PP 49-08

RUTTING

Rutting depths are measured using an INO Laser Rut Measurement System (LRMS). This system is a transverse profiling device that detects and characterizes pavement rutting. The LRMS can acquire full 4 meter width profiles of a pavement lane at normal traffic speeds and uses two laser profilers that digitize transverse sections of the pavement.

RUTTING SPECIFICATIONS	
Reported rut depth units	Inches
Vehicle speed limitations	Up to 62 mph
Sampling rate	30-150 profiles/second
Transverse resolution	1280 points/profile
Transverse field-of-view	4 m
Depth accuracy (nominal)	+/- 1 mm
Environment	Dry pavement, day or night, above 32 degrees F
Adherence to specifications	ASTM E1703M-95 (reapproved 2005)

GPS & INERTIAL SYSTEMS

GPS is collected by an onboard system employing OmniSTAR real-time correction and a gyroscope (spin-type) to provide accurate positioning data (pitch/roll/heading) in instances of satellite obstruction. All GPS coordinates are tied to image and linear distance measurements.

GPS SPECIFICATIONS	
Static accuracy	Sub-meter
Dynamic accuracy	2-3 meters
Receiver	12 satellite tracking
Coordinate system	Lat Lon WGS 84
Environment	Day or night
Cross-slope	+ - 0.5 degrees
Grade	+ - 0.5 degrees

GPS on Manually Rated Roads (MRR)

Parking areas, some roads, and other paved areas that are not fully drivable with the DCV are collected manually by field technicians. GPS is collected for these routes using portable Trimble GPS backpack units. Paved campground pads and driveways are not typically included in the inventory or GPS.

Geodatabase – Background and Metadata

In addition to this park report, a *geodatabase* containing both tabular and spatial data specific to this park has been provided. All data disseminated in the preceding report has been obtained from the tables and fields within said geodatabase. The geodatabase can be referenced for tabular data via Microsoft Access or for both tabular and spatial data via ESRI's ArcGIS Suite of software which consists of; ArcMap, ArcCatalog and ArcExplorer. Consolidating the RIP data into one database creates a seamless relationship of tabular and geographic data. It will allow RIP to facilitate easier updates and enhancements in the future.

A geodatabase can be thought of as simply a database containing spatial data. Many different tables are contained with the park's geodatabase. A complete and thorough description of the tables and fields contained within this geodatabase can be found in the *metadata*. The metadata is attached directly within the geodatabase and can be accessed via ESRI's ArcCatalog. The metadata portion of the geodatabase also includes data dictionary report functionality that formats the metadata into an easy to read report.

GLOSSARY OF TERMS AND ABBREVIATIONS

<u>TERM OR ABBREVIATION</u>	<u>DESCRIPTION OR DEFINITION</u>
AC	Alligator Cracking
CRS	Condition Rating Sheets (Section 5)
DCV	Data Collection Vehicle
Excellent	Excellent rating with an index value of 95 to 100
Fair	Fair rating with an index value from 61 to 84
FUNCT_CLASS	Functional Classification (see Route ID, Section 2)
Good	Good rating with an index value from 85 to 94
IRI	International Roughness Index
Lane Width	Width from road centerline to fogline, or from centerline to edge-of-pavement when no fogline exists
LC	Longitudinal Cracking
MRR	Manually Rated Route
MRL	Manually Rated Line
MRP	Manually Rated Polygon
N/A	Not Applicable
NC	Not Collected
PATCH	Patching and Potholes
Paved Width	Width from edge-of-pavement to edge-of-pavement
PCR	Pavement Condition Rating
PKG	Parking Area
Poor	Poor rating with an index value of 0 to 60
RCI	Roughness Condition Index
SC	Structural Cracking
SCR	Surface Condition Rating
TC	Transverse Cracking