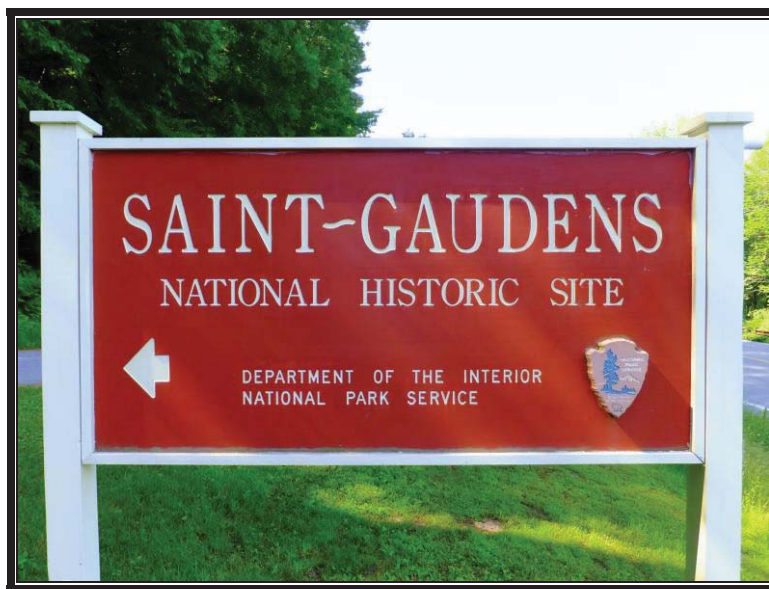




Federal Lands Highway Road Inventory Program

Road Inventory and Condition Assessment



Saint-Gaudens National Historic Site SAGA

Cycle 5 Report

**Prepared By: Federal Highway Administration
Road Inventory Program (RIP)
Data Collected: 08/2013
Report Date: 04/2014**

Saint-Gaudens National Historic Site in New Hampshire

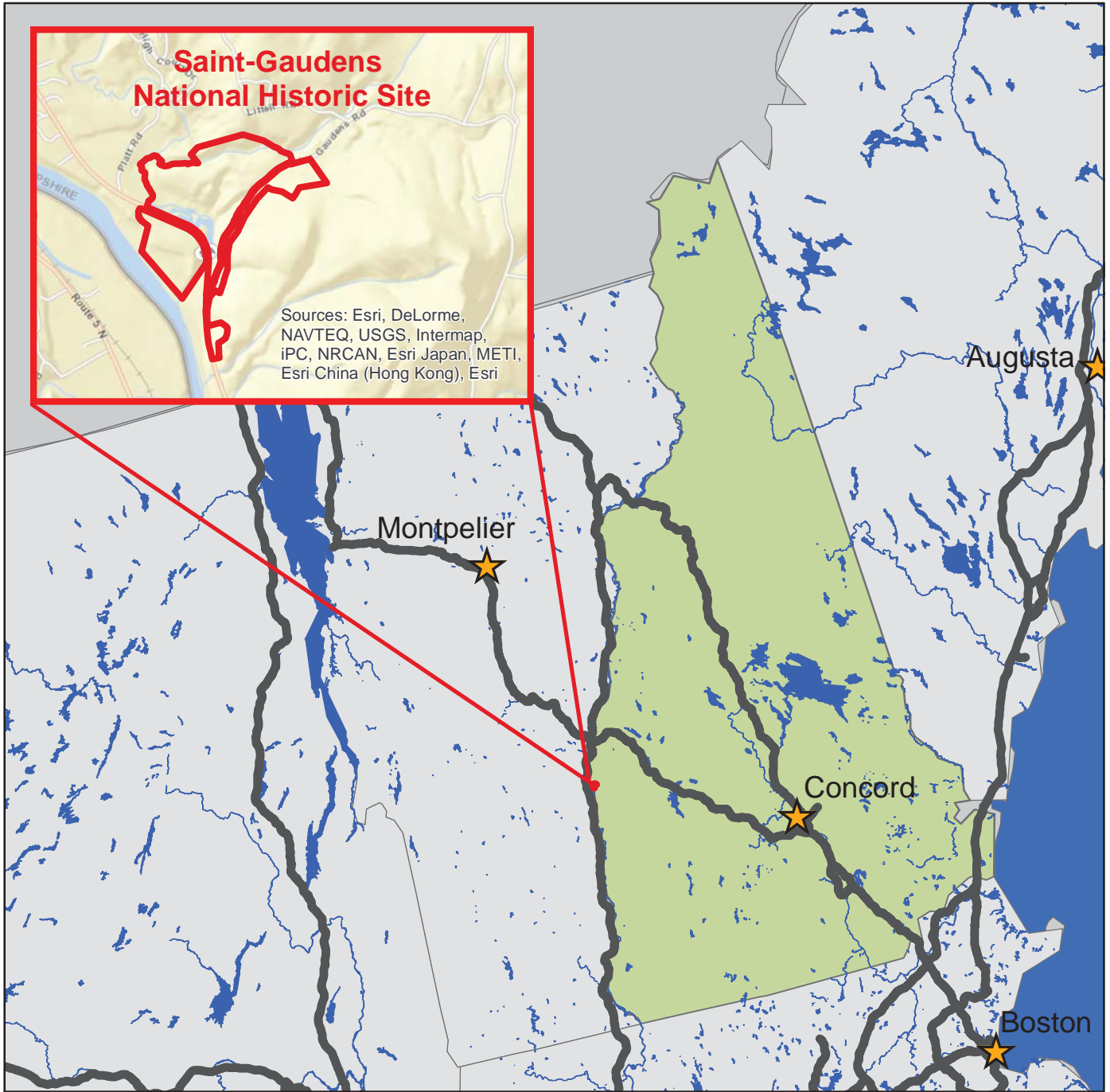




TABLE OF CONTENTS

	<u>SECTION</u>	<u>PAGE</u>
1.	INTRODUCTION	1 - 1
2.	PARK ROUTE INVENTORY Route IDs, Subcomponents & Changes Report (As Applicable)	2 - 1
3.	PARK SUMMARY INFORMATION	3 - 1
4.	PARK ROUTE LOCATION MAPS Route Location Key Map Route Location Area Map	4 - 1 4 - 2
5.	PAVED ROUTE CONDITION RATING SHEETS	5 - 1
6.	MANUALLY RATED PAVED ROUTE CONDITION RATING SHEETS MRR Pages	6 - 1
7.	PARKING AREA CONDITION RATING SHEETS Paved Parking Area Pages	7 - 1
8.	PARKWIDE / ROUTE MAINTENANCE FEATURES SUMMARIES	8 - 1
9.	ROUTE MAINTENANCE FEATURES ROAD LOGS	9 - 1
10.	APPENDIX Glossary of Terms and Abbreviations GPS on Manually Rated Routes Geodatabase Background and Metadata	10 - 1 10 - 2 10 - 3

Section 1 Introduction



Saint-Gaudens National Historic Site



Federal Lands Highway
Road Inventory Program

INTRODUCTION

The Federal Highway Administration, (FHWA), in the mid 1970s, was charged with the task of identifying surface condition deficiencies and corrective priorities on National Park Service (NPS) roads and parkways. Additionally, FHWA was tasked with establishing an integrated maintenance features inventory, locating features such as culverts, guardrails, and signs, among others, along NPS roads and parkways. As a result, in 1976 the NPS and FHWA entered into an MOA (Memorandum Of Agreement) which established the RIP (Road Inventory Program). This MOA was terminated and revised in 1980 to establish a new MOA aiming to update RIP data and develop a long-range program to improve and maintain NPS roads to designated condition standards and establish a maintenance management program.

The FHWA completed this initial phase of the RIP in the early 1980s. As a result of this effort, each NPS site included in the study received a RIP Report known as the “Brown Book” which included the information collected during this first RIP phase.

In the 1990s, the effort was again renewed to update and maintain the RIP data. By this time the computer age was upon us and a process was employed that relied heavily on electronic data collection and computer technology. A cyclical program was developed and the RIP completed two cycles of data collection from 1994 to 2001. Cycle 1, starting in 1994, was conducted in 44 “large parks” (parks containing 10 or more paved route miles). Cycle 2 began in 1997 and comprised 79 large parks and 5 small parks totaling 4,874 paved route miles. Each of these parks received a RIP Report known as the “Blue Book”. Cycle 3, from 2001 to 2004, was conducted in all parks, large and small, that contained any paved routes, including parking areas and, again, each park received a RIP Report and associated electronic files.

Cycle 4 was initiated in the spring of 2006 covering 86 large parks and several associated small parks consisting of 5,553 paved route miles and 6,232 paved parking areas. Data collection has been completed for Cycle 4 and all data has been delivered to the NPS.

In 2005, the FHWA began implementing the use of a Pavement Management System (PMS) to assist the NPS in prioritizing Pavement Maintenance and Rehabilitation activities. The PMS used by FHWA is the Highway Pavement Management Application (HPMA) and this software has the ability to store inventory and condition data from RIP and forecast future performance using prediction models. Outputs include performance and condition reports at the National, Regional, Park, or Route level. A regional prioritized list and optimization have been produced for most regions and the Federal Highway Deferred Maintenance is calculated via the HPMA.

In an effort to improve the accuracy of treatment recommendations and pavement condition descriptions, an extensive study was completed throughout 2010 that has resulted in changes to the RIP condition reporting method, specifically the distresses and indexes that comprise the Pavement Condition Rating (PCR). It was determined that a better representation of PCR could

be achieved by modifying the relative impact certain distresses would have on the overall rating. The changes that were implemented were endorsed by management at both the FHWA and NPS in October 2010. These changes will allow greater use of RIP and HPMA data for not simply condition data reporting, but also as a reliable tool for project identification and selection. Because of these changes, the PCR Condition ratings reported in Cycle 5 do not directly relate to the condition ratings reported in previous cycle RIP Reports. For more detailed information about the changes, see Section 3 and Section 10 in this RIP Report.

Cycle 5 has launched in the summer of 2010 and will again comprise all parks, large and small, that are served by paved roads and/or parking areas. For Cycle 5, the decision was made to collect condition data in large parks on Functional Class 1, 2, and 7 paved routes only, as well as any new routes that were previously not collected. In small parks, all paved routes and parking areas will be collected. As a result, this will include 81 large parks with 4,459 paved route miles and 231 small parks with 529 paved route miles and associated paved parking areas.

Since 1984, the Road Inventory Program has been funded through the Federal Lands Highway Park Roads and Parkways (PRP) Program. Currently, coordination of the RIP with FLH is under the NPS Washington Headquarters Park Facility Management Division. The FLH Washington office coordinates policy and prepares national reports and needs assessment studies for Congress.

In 1998, the Transportation Equity Act for the 21st Century (TEA-21) amended Title 23 U.S.C., and inserted Section 204(a)(6) requiring the FHWA and NPS, to develop by rule, a Pavement Management System (PMS) applied to park roads and parkways serving the National Park System.

FLH is responsible for the accuracy of all data presented in this report. Any questions or comments concerning the contents of this report should be directed to the national RIP Coordinator located in Sterling, Virginia.

Respectfully,

FHWA RIP Team

FHWA/Eastern Federal Lands
21400 Ridgetop Circle
Sterling, VA 20166
(703) 404-6371

FHWA/Central Federal Lands
12300 West Dakota Ave
Lakewood, CO 80228
(720) 963-3556

Section 2

Park Route Inventory



Saint-Gaudens National Historic Site



Federal Lands Highway
Road Inventory Program

Cycle 5 NPS/RIP Route ID Report

Road Inventory Program 04/04/2014

(Numerical By Route #)

Page 1 of 4

Shading Color Key:

Red text denotes approx. mileage

White = Paved Routes, DCV Driven

Yellow = Unpaved Routes, DCV not Driven

Blue = All Paved Parking Areas

Green = All Unpaved Parking Areas

Grey = Paved Routes, DCV not Driven

Black = State, Local or Private non-NPS Routes

■ = Concession Route Flag ON

*Unpaved route data was obtained from NPS and was not inventoried by the Road Inventory Program (RIP).

** DCV - Data Collection Vehicle

NC - Not Collected

SAGA

SAINT-GAUDENS NATIONAL HISTORIC SITE

Rte. No.	Cycle Collected	FMSS No.	Concess Route	Route Name	Route Description From To	Maint. District	Paved Miles	Un-Paved Miles	Total Route Length	Func. Class	Manual Rated SQ/FT	Surf. Type	Area Maps
0401	NC	25716		MAINTENANCE ACCESS ROAD	FROM SAINT GAUDENS ROAD TO PARK BOUNDARY ROAD	N/A	0.00	0.20	0.20	5		GR	
0403	NC	102725		FARM FIELD ACCESS ROAD	FROM ROUTE 0401 (MAINTENANCE ACCESS ROAD) TO END	N/A	0.00	0.02	0.02	5		GR	
0404	NC	102617		FARM PROPERTY ROAD	FROM SAINT GAUDENS ROAD UNPAVED SECTION TO END	N/A	0.00	0.05	0.05	5		GR	
0405	NC	102727		NURSERY ROAD	FROM ROUTE 0401 (MAINTENANCE ACCESS ROAD) TO END	N/A	0.00	0.04	0.04	5		NV	
0406	NC	102728		CART PATH ROAD	FROM SAINT GAUDENS ROAD TO END	N/A	0.00	0.27	0.27	5		NV	
0407	NC	115586		BEAMAN BARN ROAD	FROM ROUTE 0410 (BEAMAN FARM ROAD) TO ROUTE 0410 (BEAMAN FARM ROAD)	N/A	0.00	0.08	0.08	5		NV	
0408	5	115587		BEAMAN HOME DRIVEWAY	FROM ROUTE 0410 (BEAMAN FARM ROAD) TO ROUTE 0410 (BEAMAN FARM ROAD)	N/A	0.00	0.00	0.00	5	1,523	AS	1
0409	NC	115588		CHAUNCEY COTTAGE DRIVEWAY	FROM ROUTE 0407 (BEAMAN BARN ROAD) TO END	N/A	0.00	0.04	0.04	5		NV	
0410	NC	115585		BEAMAN FARM ROAD	FROM HIGHWAY 12A TO HIGHWAY 12A	N/A	0.00	0.08	0.08	5		GR	
0900	5	102729		VISITOR PARKING	FROM ROUTE 5000 (SAINT GAUDENS ROAD) TO PARKING	N/A	0.00	0.00	0.00		4,356	AS	1
0901	5	102730		CARETAKERS PARKING	FROM ROUTE 5000 (SAINT GAUDENS ROAD) TO PARKING	N/A	0.00	0.00	0.00		5,374	AS	1
0902	NC	102732		MILL PARKING	FROM ROUTE 5012A (NEW HAMPSHIRE STATE ROUTE 12A) TO PARKING	N/A	0.00	0.00	0.00		3,500	NV	
0903	NC	102733		QUARTERS PARKING AREA	FROM ROUTE 0404 (FARM PROPERTY ROAD) TO PARKING	N/A	0.00	0.00	0.00		1,458	GR	
0904	NC	102734		FARM FIELD PARKING	FROM ROUTE 0403 (FARM FIELD ACCESS ROAD) TO PARKING	N/A	0.00	0.00	0.00		3,500	GR	
0905	NC	102735		MAINTENANCE AREA PARKING	FROM ROUTE 0401 (MAINTENANCE ACCESS ROAD) TO ROUTE 0401 (MAINTENANCE ACCESS ROAD)	N/A	0.00	0.00	0.00		6,156	GR	
0906	5	102736		QUARTERS GARAGE PARKING	FROM ROUTE 0404 (FARM PROPERTY ROAD) TO PARKING	N/A	0.00	0.00	0.00		192	AS	1

Cycle 5 NPS/RIP Route ID Report

Road Inventory Program 04/04/2014

(Numerical By Route #)

Page 2 of 4

Shading Color Key:
Red text denotes approx. mileage

White = Paved Routes, DCV Driven	Yellow = Unpaved Routes, DCV not Driven	Blue = All Paved Parking Areas	Green = All Unpaved Parking Areas
Grey = Paved Routes, DCV not Driven	Black = State, Local or Private non-NPS Routes	■ = Concession Route Flag ON	

*Unpaved route data was obtained from NPS and was not inventoried by the Road Inventory Program (RIP).

** DCV - Data Collection Vehicle NC - Not Collected

SAGA

SAINT-GAUDENS NATIONAL HISTORIC SITE

Rte. No.	Cycle Collected	FMSS No.	Concess Route	Route Name	Route Description From To	Maint. District	Paved Miles	Un-Paved Miles	Total Route Length	Func. Class	Manual Rated SQ/FT	Surf. Type	Area Maps
0907	NC	102737		EMPLOYEE PARKING	FROM ROUTE 0401 (MAINTENANCE ACCESS ROAD) TO PARKING	N/A	0.00	0.00	0.00		3,480	GR	
0908	NC	102738		HANDICAPPED PARKING	FROM ROUTE 0901 (CARETAKERS PARKING) TO PARKING	N/A	0.00	0.00	0.00		1,800	NV	
0909	5	115589		DANCE HALL PARKING	FROM ROUTE 0408 (BEAMAN HOME DRIVEWAY) TO PARKING	N/A	0.00	0.00	0.00		2,385	AS	1
0910	5			COLLECTIONS STORAGE PARKING	FROM ROUTE 0401 (MAINTENANCE ACCESS ROAD) TO ROUTE 0401 (MAINTENANCE ACCESS ROAD)	N/A	0.00	0.00	0.00		1,670	AS	1
0911	NC	113394		PLANNED ROUTE - RV / BUS PARKING AND TURNAROUND	FROM TO	N/A	0.00	0.00	0.00			OT	
5000	5			SAINT GAUDENS ROAD	FROM ROUTE 5012A (NEW HAMPSHIRE STATE ROUTE 12A) TO BEGIN SAINT GAUDENS ROAD UNPAVED SECTION	N/A	0.71	0.00	0.71			AS	1
5012A	5			NEW HAMPSHIRE STATE ROUTE 12A	FROM PLATT ROAD ON LEFT TO SLADE HILL DRIVE ON LEFT	N/A	1.50	0.00	1.50			AS	1

Cycle 5 NPS/RIP Route ID Report

Shading Color Key:
Red text denotes approx. mileage

White = Paved Routes, DCV Driven
Grey = Paved Routes, DCV not Driven

Yellow = Unpaved Routes, DCV not Driven
Black = State, Local or Private non-NPS Routes

Blue = All Paved Parking Areas
■ = Concession Route Flag ON

Green = All Unpaved Parking Areas

*Unpaved route data was obtained from NPS and was not inventoried by the Road Inventory Program (RIP).

** DCV - Data Collection Vehicle NC - Not Collected

CYCLE 5 SUMMARY TOTALS FOR SAINT-GAUDENS NATIONAL HISTORIC SITE

<u>CYCLE 5 ROUTE TOTALS</u>	
DCV Driven Route Miles	0.00
Manually Rated Route Miles	0.00
TOTAL PARK ROUTE MILES COLLECTED IN CYCLE 5	0.00
Manually Rated Routes (SQFT)	1,523
TOTAL UNPAVED PARK ROUTE MILES	0.78

<u>CYCLE 5 CONCESSION TOTALS</u>	
Concession Paved Route Miles	0.00
Concession Unpaved Route Miles	0.00
TOTAL CONCESSION ROUTE MILES	0.00
Concession Paved Parking Area SQFT	0
Concession Unpaved Parking Area SQFT	0
TOTAL CONCESSION PARKING AREA SQFT	0
Concession Manually Rated Routes SQFT	0

* <u>CYCLE 5 PARKING AREA TOTALS</u>	
Paved Parking (SQFT)	13,977
Unpaved Parking (SQFT)	19,894
TOTAL PARKING (SQFT)	33,871

<u>CYCLE 5 WEIGHTED AVERAGE PARK VALUES</u>	
DCV Driven PCR	N/A
**Manually Rated Routes PCR	45
**Parking PCR	75
***Total Equivalent Lane Miles	0.27

* - The Parking Area Totals SQFT value represents all parking areas collected in Cycle 5, both park and concessionaire.

** - Parking and Manually Rated Routes are assigned the following PCR values based on their observed condition: Construction=-1, Excellent=97, Good=90, Fair=73, and Poor=45.

*** - Equivalent Lane Miles are calculated by route using the following equations : DCV and Manually Rated Lines Routes=(PAVE_WIDTHxPAVED_MI)/11 foot lane. Parking Areas=SQ_FEET/5280/11. Manually Rated Polygons=SQ_FEET/5280/11.

Cycle 5 NPS/RIP Route ID Report

Road Inventory Program 04/04/2014

(Numerical By Route #)

Page 4 of 4

Shading Color Key:

Red text denotes approx. mileage

White = Paved Routes, DCV Driven	Yellow = Unpaved Routes, DCV not Driven	Blue = All Paved Parking Areas	Green = All Unpaved Parking Areas
Grey = Paved Routes, DCV not Driven	Black = State, Local or Private non-NPS Routes	= Concession Route Flag ON	

*Unpaved route data was obtained from NPS and was not inventoried by the Road Inventory Program (RIP).

** DCV - Data Collection Vehicle NC - Not Collected

General Park Road Functional Classification Table

- Class 1** Principal Park Road/Rural Parkway (Public Roads) Roads which constitute the main access route, circulatory tour, or thoroughfare for park visitors. Route Numbers 1 - 99. Note: Rural parkways (e.g. Natchez Trace) are numbered 1 - 9. State Routes Inventoried for Park. Route Numbers 5000-5999
- Class 2** Connector Park Road (Public Roads) - Roads which provide access within a park to areas of scenic, scientific, recreational or cultural interest, such as overlooks, campgrounds, etc. Route Numbers 100-199.
- Class 3** Special Purpose Park Road (Public Roads) - Roads which provide circulation within public areas, such as campgrounds, picnic areas, visitor center complexes, concessionaire facilities, etc. These roads generally serve low-speed traffic and are often designed for one-way circulation. Route Numbers 200-299.
- Class 4** Primitive Park Roads (Public Roads) - Roads which provide circulation through remote areas and/or access to primitive campgrounds and undeveloped areas. These roads frequently have no minimum design standards and their use may be limited to specially equipped vehicles. Route Numbers 200-299. Note: Functional Classes 3 and 4 have the same route numbers because, historically, they were numbered similarly.
- Class 5** Administrative Access Road (Administrative Roads) - All public roads intended for access to administrative developments or structures such as park offices, employee quarters, or utility areas. Route Numbers 400-499.
- Class 6** Restricted Road (Administrative Roads) - All roads normally closed to the public, including patrol roads, truck trails, and other similar roads. Route Numbers 400-499. Note: Functional Classes 5 and 6 have the same route numbers because historically they were numbered similarly and often there is little distinction between these routes. For example, because utility areas and employee housing are often closed to the public, this restriction would result in classification of FC 6 rather than FC 5.
- Class 7** Urban Parkway (Urban Parkways and City Streets) - These facilities serve high volumes of park and non-park related traffic and are restricted, limited-access facilities in an urban area. This category of roads primarily encompasses the major parkways which serve as gateways to our nation's capital. Other major park roads or portions thereof, however, may be included in this category. Route Numbers 1-9.
- Class 8** City Streets (Urban Parkways and City Streets) - City streets are usually extensions of the adjoining street system that are owned and maintained by the National Park Service. The construction and/or reconstruction should conform with accepted local engineering practice and local conditions. Route Numbers 600-699.

A park road system contains those roads within or giving access to a park or other unit of the NPS which are administered by the NPS, or by the Service in cooperation with other agencies. The assignment of a functional classification (FC) to a park road is not based on traffic volumes or design speed, but on the intended use or function of that road or route.

The historic route numbering system also included a 300 number series for interpretive roads, and a 500 series for one-way roads. There are approximately 250 roads nationwide which are designated by the 300 and 500 series. The numbers for these roads will be maintained for reporting consistency. However, since these interpretive and one-way routes are not as clearly tied to a specific functional class, the 300 and 500 series will be discontinued for future use.

5000 route numbers are assigned to Non-NPS Routes that are State, County or City owned which border, traverse, or provide access to Park Facilities or Locations. 5000 Routes are driven for GPS and Video Log only.

Surface Type Abbreviations:

- AS - Asphaltic Concrete Pavement**
- CO - Portland Cement Concrete Pavement**
- BR - Brick or Pavers Road Bed**
- CB - Cobble Stone Road Bed**
- GR - Gravel Road Bed**
- SA - Sand Road Bed**
- NV - Native or Dirt Material Road Bed**
- OT - Other Materials Road Bed**

ROUTES ADDED FROM PREVIOUS INVENTORY:
--

Route #	Route Name	Reason for Addition	Comments
0408	BEAMAN HOME DRIVEWAY	OTHER	PAVED ROUTE ADDED DURING SEPTEMBER 2010 ROADS PORTAL ALIGNMENT.
0909	DANCE HALL PARKING	OTHER	PAVED ROUTE ADDED DURING SEPTEMBER 2010 ROADS PORTAL ALIGNMENT.
0910	COLLECTIONS STORAGE PARKING	OTHER	PAVED ROUTE ADDED DURING THE ROUTE ID MEETING.
5000	SAINT GAUDENS ROAD	OTHER	5000 SERIES ROUTE ADDED PER THE PARK'S REQUEST.
5012A	NEW HAMPSHIRE STATE ROUTE 12A	OTHER	5000 SERIES ROUTE ADDED PER THE PARK'S REQUEST.

ROUTES MODIFIED FROM PREVIOUS INVENTORY:

Route #	Route Name	Type of Modification	Comments
0906	QUARTERS GARAGE PARKING	SURFACE TYPE CHANGE	ROUTE HAS BEEN PAVED SINCE CYCLE 3 DATA COLLECTION.

OTHER CHANGES FROM PREVIOUS INVENTORY:

Route #	Route Name	Type of Change	Comments
0901	CARETAKERS PARKING	SQ FEET CHANGE	GPS UPDATED TO REFLECT ROUTE GEOMETRY ACCURATELY.

Section 3

Park Summary Information



Saint-Gaudens National Historic Site



Federal Lands Highway
Road Inventory Program

Note: This park is classified as a Small Park. No Data Collection Vehicle routes existed in this park at the time of data collection. Therefore, there is no data to report for this section.

Section 4

Park Route Location Maps

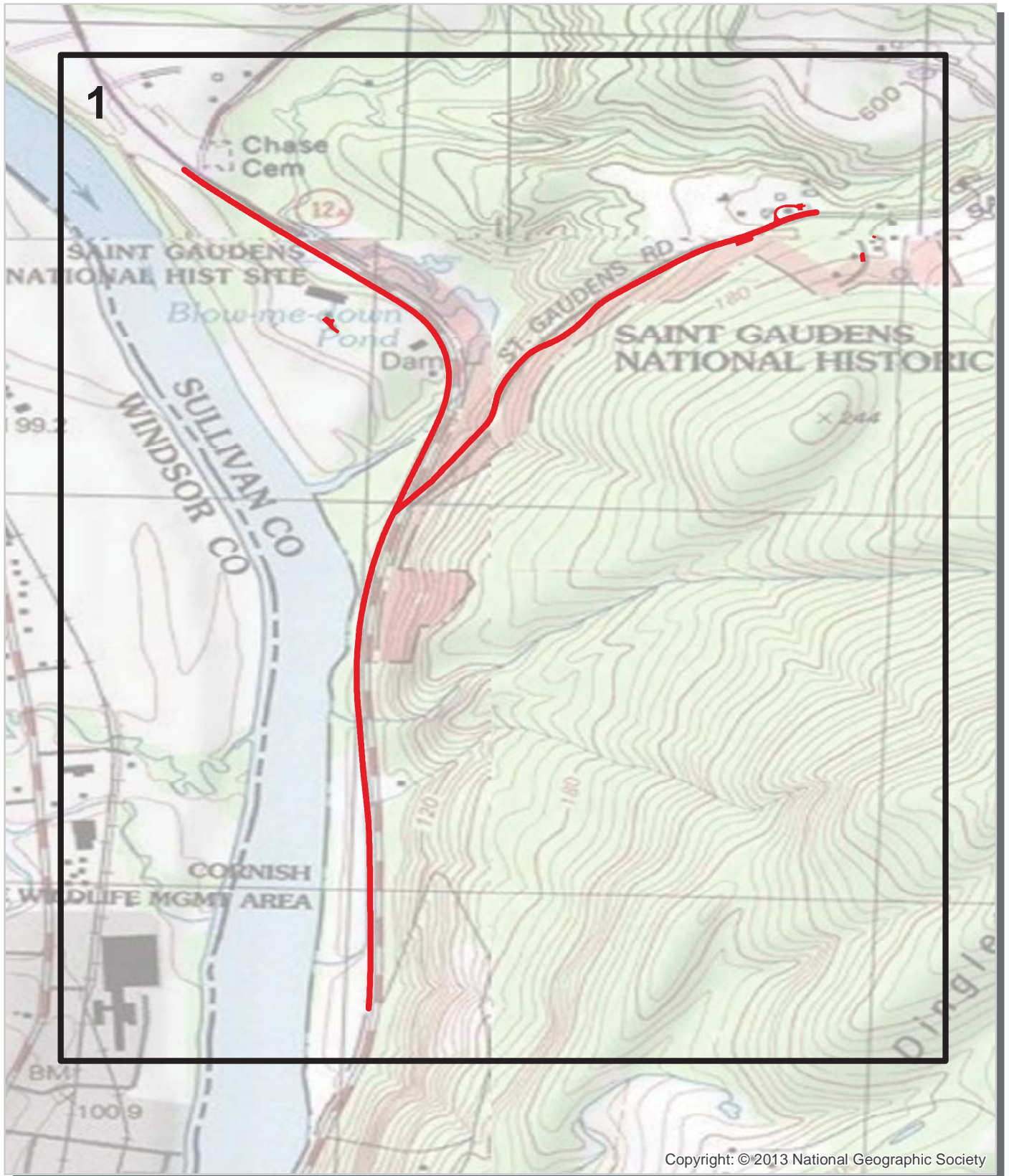


Saint-Gaudens National Historic Site




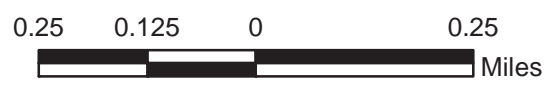
Federal Lands Highway
Road Inventory Program

Saint-Gaudens National Historic Site
Route Location Map
Key Map

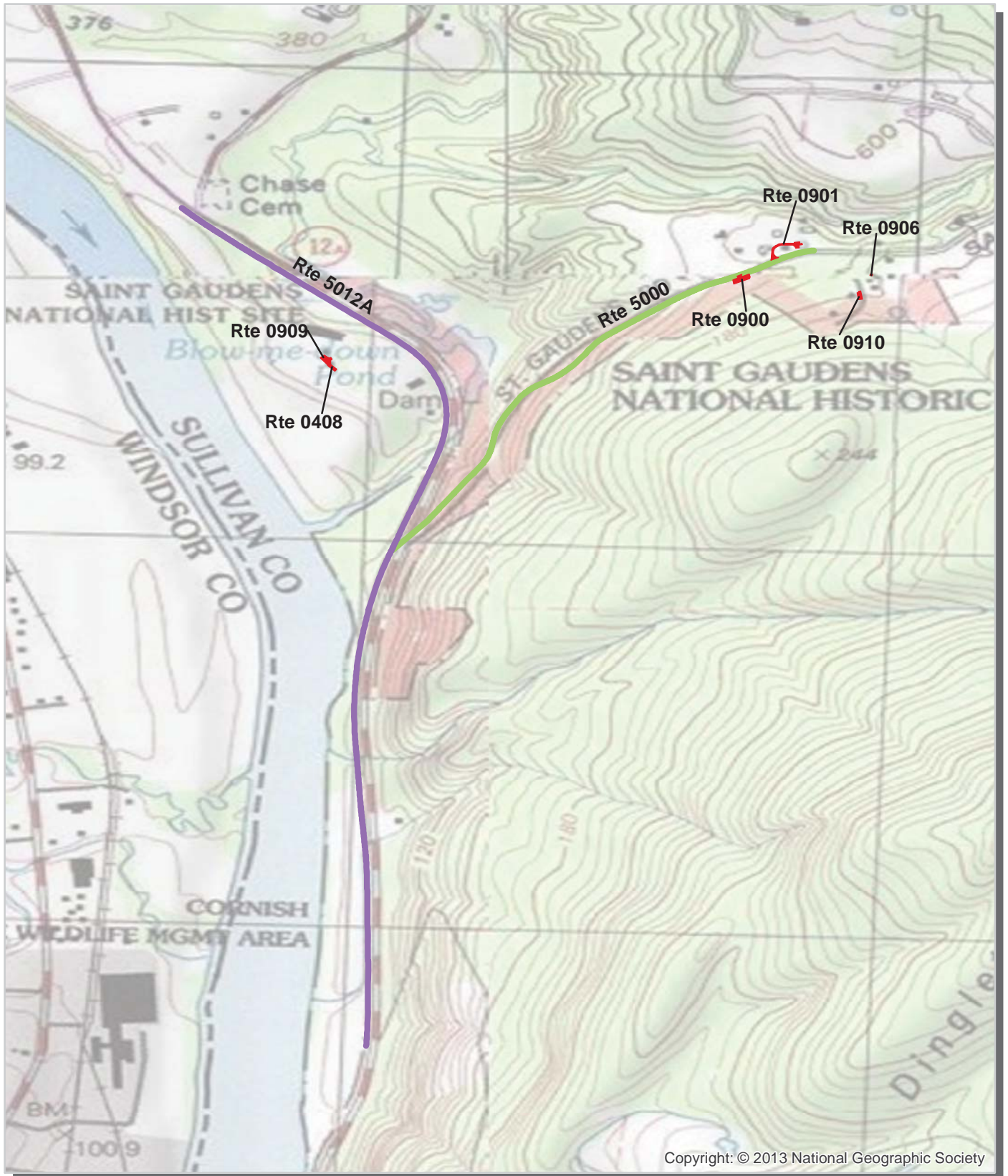


Copyright: © 2013 National Geographic Society

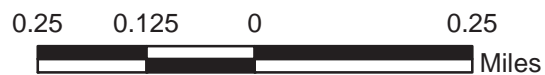
 Cycle 5 Collected Routes



Saint-Gaudens National Historic Site Route Location Map Area 1



Unique colors used to differentiate routes



Section 5
Paved Route
Condition Rating Sheets



Saint-Gaudens National Historic Site



**Federal Lands Highway
Road Inventory Program**

Note: This park is classified as a Small Park. No Data Collection Vehicle routes existed in this park at the time of data collection. Therefore, there is no data to report for this section.

Section 6
Manually Rated Paved Route
Condition Rating Sheets



Saint-Gaudens National Historic Site



Federal Lands Highway
Road Inventory Program

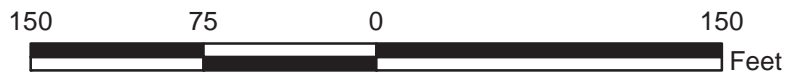
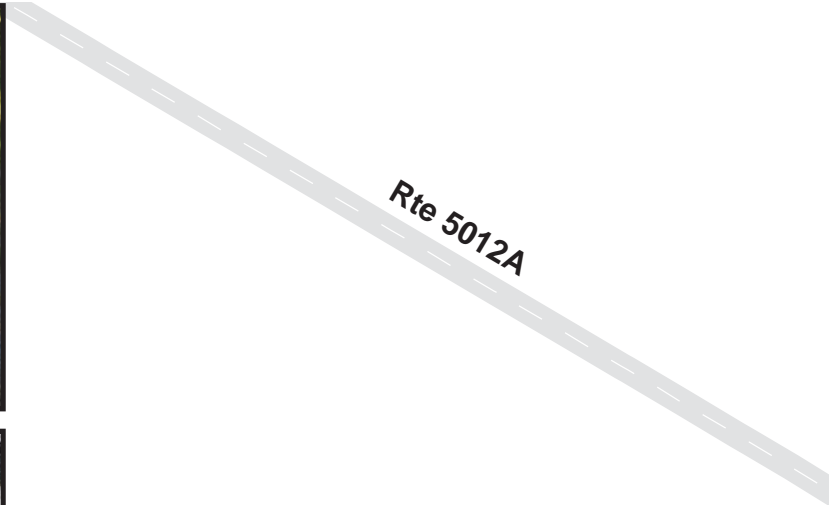
SAINT-GAUDENS NATIONAL HISTORIC SITE

Route 0408

BEAMAN HOME DRIVEWAY
 FROM ROUTE 0410 (BEAMAN FARM ROAD)
 TO ROUTE 0410 (BEAMAN FARM ROAD)

Route Number	Public / NonPublic	Date Visited	Area (sq ft)	Lane Miles *	Surface Type
0408	PUBLIC	6/21/2013	1,523	0.03	AS
Culverts	Drop Inlets	Gates	Curb & Gutter	Curb	PCR
0	1	0	NO CURB AND GUTTER	NO CURB	POOR/45

* Lane miles are based on 11' lane widths



Section 7
Parking Area
Condition Rating Sheets



Saint-Gaudens National Historic Site



Federal Lands Highway
Road Inventory Program

SAINT-GAUDENS NATIONAL HISTORIC SITE

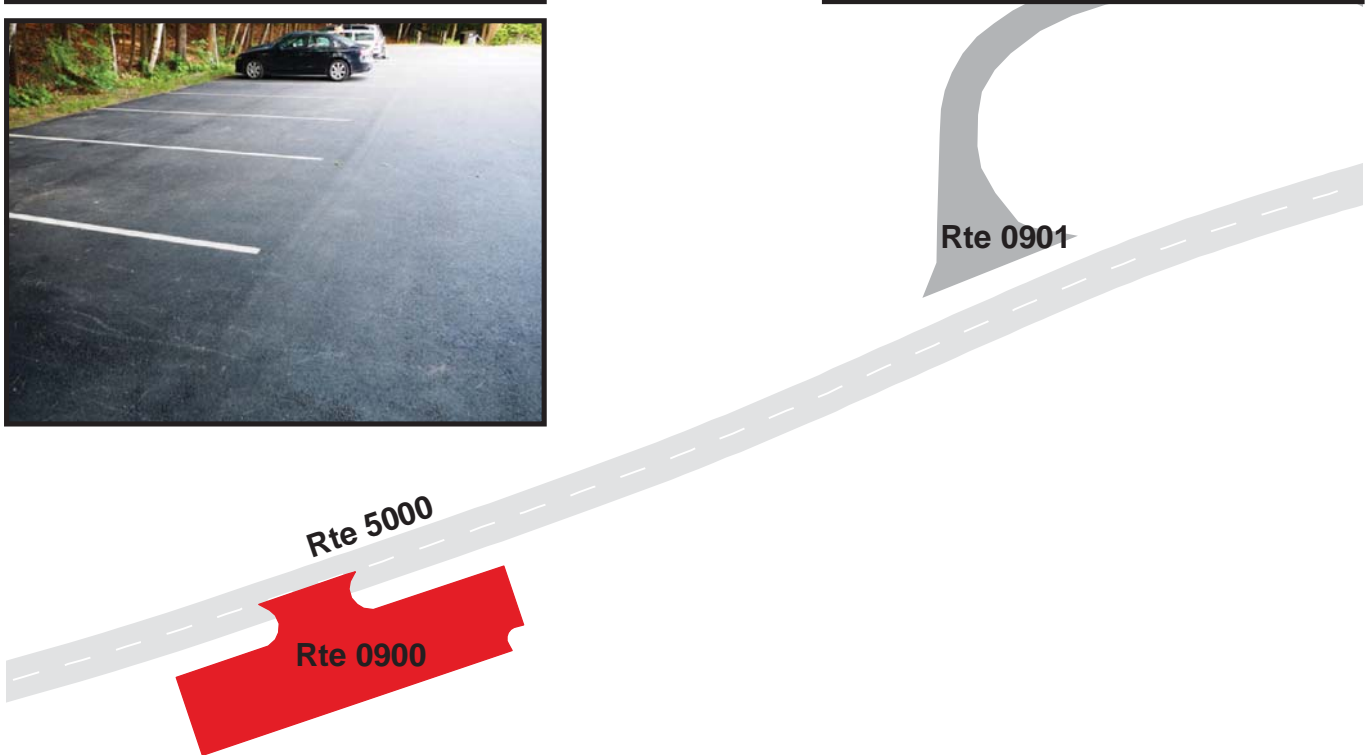
Route 0900

VISITOR PARKING

FROM ROUTE 5000 (SAINT GAUDENS ROAD)
TO PARKING

Route Number	Public / NonPublic	Date Visited	Area (sq ft)	Lane Miles *	Surface Type
0900	PUBLIC	6/21/2013	4,356	0.08	AS
Culverts	Drop Inlets	Gates	Curb & Gutter	Curb	PCR
0	1	0	NO CURB AND GUTTER	NO CURB	EXCELLENT/97

* Lane miles are based on 11' lane widths



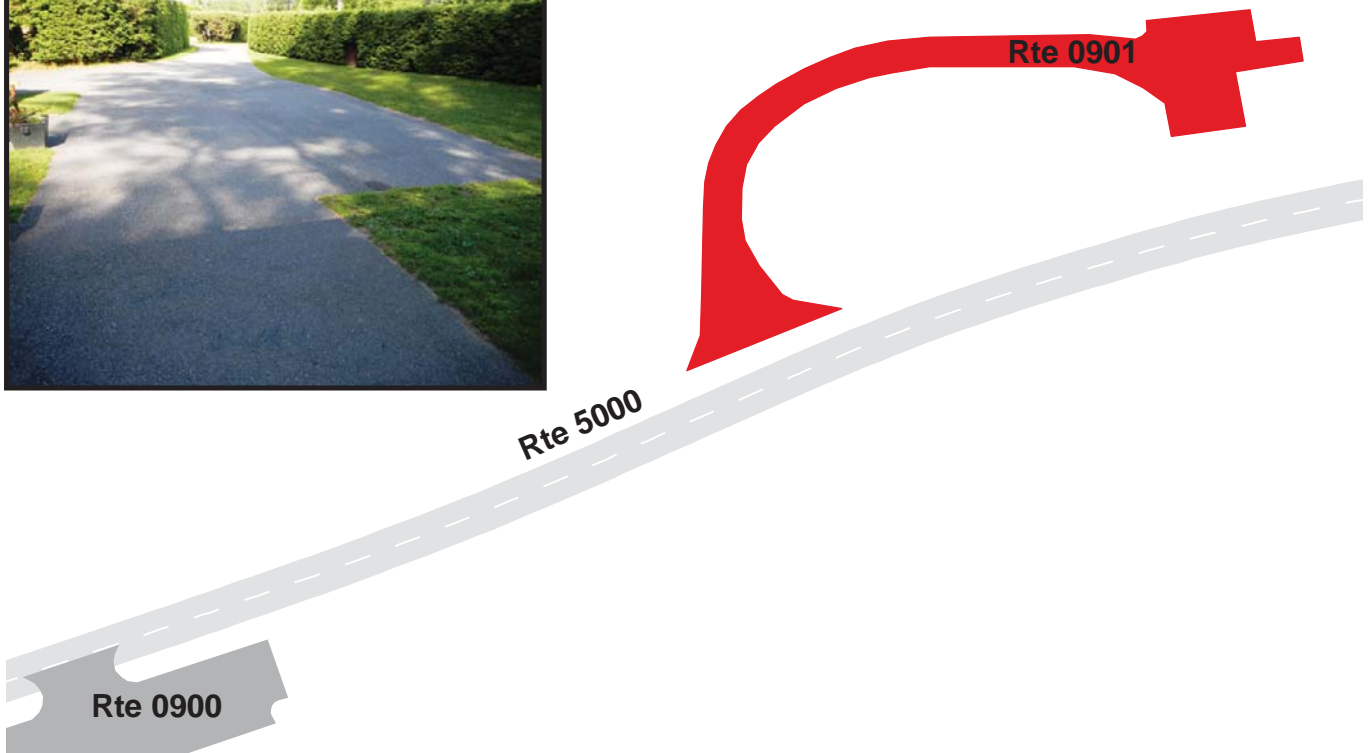
SAINT-GAUDENS NATIONAL HISTORIC SITE

Route 0901

CARETAKERS PARKING
FROM ROUTE 5000 (SAINT GAUDENS ROAD)
TO PARKING

Route Number	Public / NonPublic	Date Visited	Area (sq ft)	Lane Miles *	Surface Type
0901	PUBLIC	6/21/2013	5,374	0.09	AS
Culverts	Drop Inlets	Gates	Curb & Gutter	Curb	PCR
0	0	0	NO CURB AND GUTTER	NO CURB	FAIR/73

* Lane miles are based on 11' lane widths



SAINT-GAUDENS NATIONAL HISTORIC SITE

Route 0906

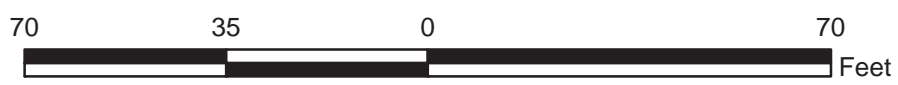
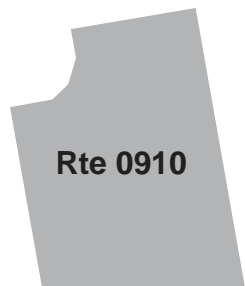
QUARTERS GARAGE PARKING
 FROM ROUTE 0404 (FARM PROPERTY ROAD)
 TO PARKING

Route Number	Public / NonPublic	Date Visited	Area (sq ft)	Lane Miles *	Surface Type
0906	NONPUBLIC	6/21/2013	192	0.00	AS
Culverts	Drop Inlets	Gates	Curb & Gutter	Curb	PCR
0	0	0	NO CURB AND GUTTER	NO CURB	POOR/45

* Lane miles are based on 11' lane widths



Rte 0906



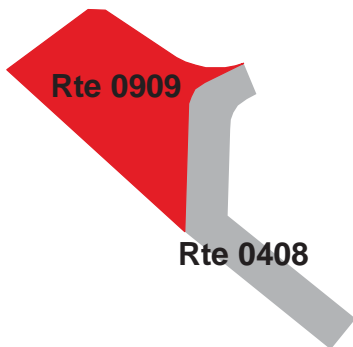
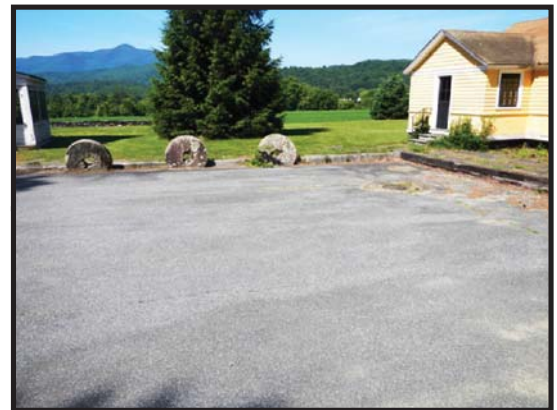
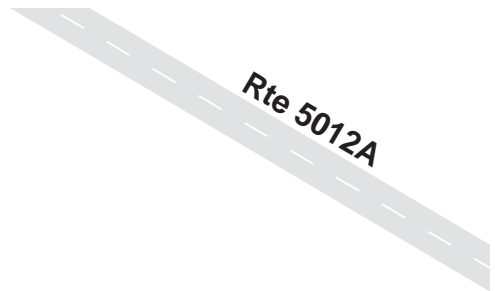
SAINT-GAUDENS NATIONAL HISTORIC SITE

Route 0909

DANCE HALL PARKING
FROM ROUTE 0408 (BEAMAN HOME DRIVEWAY)
TO PARKING

Route Number	Public / NonPublic	Date Visited	Area (sq ft)	Lane Miles *	Surface Type
0909	PUBLIC	6/21/2013	2,385	0.04	AS
Culverts	Drop Inlets	Gates	Curb & Gutter	Curb	PCR
0	1	0	NO CURB AND GUTTER	STONE & WOOD CURB	POOR/45

* Lane miles are based on 11' lane widths



SAINT-GAUDENS NATIONAL HISTORIC SITE

Route 0910

COLLECTIONS STORAGE PARKING
FROM ROUTE 0401 (MAINTENANCE ACCESS ROAD)
TO ROUTE 0401 (MAINTENANCE ACCESS ROAD)

Route Number	Public / NonPublic	Date Visited	Area (sq ft)	Lane Miles *	Surface Type
0910	PUBLIC	6/21/2013	1,670	0.03	AS
Culverts	Drop Inlets	Gates	Curb & Gutter	Curb	PCR
0	0	0	NO CURB AND GUTTER	NO CURB	FAIR/73

* Lane miles are based on 11' lane widths



Rte 0906



Section 8

Parkwide/Route

Maintenance Features Summaries



Saint-Gaudens National Historic Site



Federal Lands Highway
Road Inventory Program

SAGA: PARKWIDE / ROUTE MAINTENANCE FEATURES SUMMARY

Note: There are no Data Collection Vehicle routes in this park. However, counts were made of the features listed in the table below.

Route Number	Culverts	Drop Inlets	Gates	Curb	Curb & Gutter
0408	0	1	0	NO CURB	NO CURB AND GUTTER
0900	0	1	0	NO CURB	NO CURB AND GUTTER
0901	0	0	0	NO CURB	NO CURB AND GUTTER
0906	0	0	0	NO CURB	NO CURB AND GUTTER
0909	0	1	0	STONE & WOOD CURB	NO CURB AND GUTTER
0910	0	0	0	NO CURB	NO CURB AND GUTTER
Totals	0	3	0		

NC = Not Collected

NO = This feature does not exist

Section 9
Route Maintenance Features
Road Logs



Saint-Gaudens National Historic Site



**Federal Lands Highway
Road Inventory Program**

Note: This park is classified as a Small Park. No Data Collection Vehicle routes existed in this park at the time of data collection. Therefore, there is no data to report for this section.

Section 10 Appendix



Saint-Gaudens National Historic Site



Federal Lands Highway
Road Inventory Program

GLOSSARY OF TERMS AND ABBREVIATIONS

<u>TERM OR ABBREVIATION</u>	<u>DESCRIPTION OR DEFINITION</u>
DCV	Data Collection Vehicle
Excellent	Excellent rating with an index value of 97
Fair	Fair rating with an index value from 73
Func. Class	Functional Classification (see Route ID, Section 2)
Good	Good rating with an index value of 90
MRR	Manually Rated Route
MRL	Manually Rated Line
MRP	Manually Rated Polygon
N/A	Not Applicable
NC	Not Collected
PCR	Pavement Condition Rating
PKG	Parking Area
Poor	Poor rating with an index value of 45
RIP	Road Inventory Program

GPS on Manually Rated Roads (MRR)

Parking areas, some roads, and other paved areas that are not fully drivable with the Data Collection Vehicle are collected manually by field technicians. GPS is collected for these routes using portable Trimble GPS backpack units. Paved campground pads and driveways are not typically included in the inventory or GPS.

Geodatabase – Background and Metadata

In addition to this park report, a *geodatabase* containing both tabular and spatial data specific to this park has been provided. All data disseminated in the preceding report has been obtained from the tables and fields within said geodatabase. The geodatabase can be referenced for tabular data via Microsoft Access or for both tabular and spatial data via ESRI's ArcGIS Suite of software which consists of; ArcMap, ArcCatalog and ArcExplorer. Consolidating the RIP data into one database creates a seamless relationship of tabular and geographic data. It will allow RIP to facilitate easier updates and enhancements in the future.

A geodatabase can be thought of as simply a database containing spatial data. Many different tables are contained within the park's geodatabase. A complete and thorough description of the tables and fields contained within this geodatabase can be found in the *metadata*. The metadata is attached directly within the geodatabase and can be accessed via ESRI's ArcCatalog. The metadata portion of the geodatabase also includes data dictionary report functionality that formats the metadata into an easy to read report.