

PARA Cycle 6

Road Inventory Report of NPS Routes for Parashant National Monument



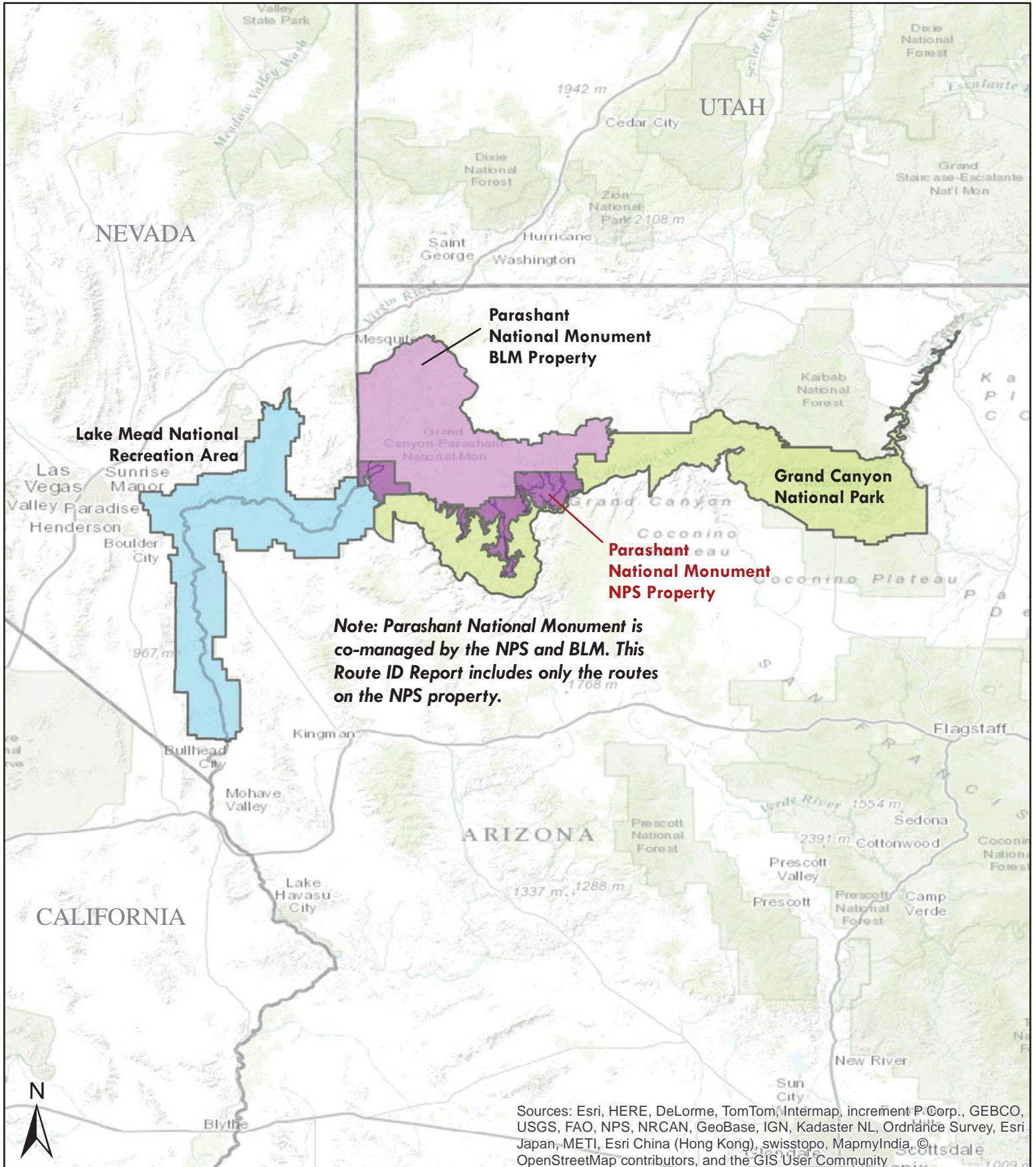
**Federal Lands Highway
Road Inventory Program**

Prepared By:

**Federal Highway Administration
Eastern Federal Lands Highway Division
Road Inventory Program (RIP)**

Inventory Updated: October 2015

Parashant National Monument in Arizona



Sources: Esri, HERE, DeLorme, TomTom, Intermap, increment P Corp., GEBCO, USGS, FAO, NPS, NRCAN, GeoBase, IGN, Kadaster NL, Ordnance Survey, Esri Japan, METI, Esri China (Hong Kong), swisstopo, MapmyIndia, © OpenStreetMap contributors, and the GIS User Community

Cycle 6 NPS / RIP Route ID Report

(Numerical By Summary Route and Subcomponent #)



Shading Color Key

White = Paved Routes, DCV Driven

Grey = Paved Routes, DCV not Driven

Black = Non-NPS Routes

■ = Concession Route

Yellow = Unpaved Routes, DCV not Driven

Blue = Paved Parking Areas

Green = Unpaved Parking Areas

Red text denotes:

*Unpaved route data was obtained from the NPS and was not collected by the Road Inventory Program (RIP).

DCV = Data Collection Vehicle
 MRL = Manually Rated Line
 MRP = Manually Rated Polygon
 PKG = Parking Areas
 NC = Not Collected

PARA Parashant National Monument

ROAD INVENTORY (1100 SERIES FMSS LOCATIONS)

Route No.	Cycle Collected	Iteration Collected	FMSS Number	Concession	Route Description		Maintenance District	Paved Miles	Unpaved Miles	Total Mileage	Functional Class	Area (SQ FT)	Surf. Type	Area Map
					Route Name	From								
0400	NC		108025		COPPER MOUNTAIN ROAD (NPS 1232)	FROM ROUTE 0404 (PARASHANT CANYON ROAD (NPS 1230))	TO COPPER MOUNTAIN MINE	0.00	2.10	2.10	4		NV	
0401	NC		108028		WHITMORE POINT ROAD (NPS 1263)	FROM BLM ROAD 1063 (WHITMORE BENCH)	TO WHITMORE POINT OVERLOOK	0.00	6.20	6.20	4		NV	
0402	NC		108036		FROG SPRING ROAD (NPS 1247)	FROM ROUTE 0416 (WHITMORE CANYON ROAD (BLM 1045))	TO FROG SPRINGS	0.00	12.00	12.00	4		NV	
0403	NC		108040		GRAND WASH ROAD (NPS 1215)	FROM ROUTE 0407 (PIGEON POINT ROAD (NPS 1213))	TO PARASHANT NM/LAKE MEAD NRA BOUNDARY AT GRAND WASH BAY.	0.00	0.72	0.72	4		NV	
0404	NC		108018		PARASHANT CANYON ROAD (NPS 1230)	FROM NPS/BLM BOUNDARY IN PARASHANT WASH	TO PARASHANT NM/GRAND CANYON NATIONAL PARK BOUNDARY NEAR MOLLIES NIPPLE	0.00	24.00	24.00	4		NV	
0405	NC		108039		PARASHANT CANYON OVERLOOK ROAD (NPS 1265)	FROM ROUTE 0401 (WHITMORE POINT ROAD (NPS 1263))	TO PARASHANT CANYON OVERLOOK	0.00	0.40	0.40	4		NV	
0406	NC		108029		WHITMORE POINT LOOP ROAD (NPS 1264)	FROM ROUTE 0401 (WHITMORE POINT ROAD (NPS 1263))	TO BLM ROAD 1063 (WHITMORE BENCH)	0.00	1.80	1.80	4		NV	
0407	NC		108041		PIGEON POINT ROAD (NPS 1213)	FROM NPS/BLM BOUNDARY (END OF MOHAVE COUNTY ROAD 113)	TO PARASHANT NM/LAKE MEAD NRA BOUNDARY ON PIGEON POINT AT GRAND WASH BAY	0.00	11.38	11.38	4		NV	
0408	NC		108035		SKUNK POCKET ROAD (NPS 1248)	FROM ROUTE 0402 (FROG SPRING ROAD (NPS 1247))	TO SKUNK POCKET	0.00	1.90	1.90	4		NV	
0409	NC		108007		KELLY POINT ROAD (NPS 1203)	FROM NPS/BLM BOUNDARY (END OF MOHAVE COUNTY ROAD 103)	TO END AT KELLY POINT OVERLOOK	0.00	26.50	26.50	4		NV	
0410	NC		108005		TWIN POINT ROAD (NPS 1019)	FROM NPS/BLM BOUNDARY (END OF BLM 1019)	TO END AT TWIN POINT OVERLOOK	0.00	10.10	10.10	4		NV	

Cycle 6 NPS / RIP Route ID Report

(Numerical By Summary Route and Subcomponent #)



Shading Color Key

White = Paved Routes, DCV Driven

Grey = Paved Routes, DCV not Driven

Black = Non-NPS Routes

■ = Concession Route

Yellow = Unpaved Routes, DCV not Driven

Blue = Paved Parking Areas

Green = Unpaved Parking Areas

Red text denotes:

*Unpaved route data was obtained from the NPS and was not collected by the Road Inventory Program (RIP).

DCV = Data Collection Vehicle
 MRL = Manually Rated Line
 MRP = Manually Rated Polygon
 PKG = Parking Areas
 NC = Not Collected

PARA Parashant National Monument

ROAD INVENTORY (1100 SERIES FMSS LOCATIONS)

Route No.	Cycle Collected	Iteration Collected	FMSS Number	Concession	Route Description		Maintenance District	Paved Miles	Unpaved Miles	Total Mileage	Functional Class	Area (SQ FT)	Surf. Type	Area Map
					Route Name	From To								
0411	NC		108012		PINE VALLEY ADMINISTRATIVE ROAD	FROM ROUTE 0409 (KELLY POINT ROAD (NPS 1203)) TO ROUTE 0418 (PLEASANT VALLEY ROAD (NPS 1204))		0.00	6.50	6.50	6		NV	
0412	NC		108037		MT. LOGAN WILDERNESS BOUNDARY ACCESS ROAD (ADMINISTRATIVE)	FROM ROUTE 0416 (WHITMORE CANYON ROAD (BLM 1045)) TO NPS/BLM BOUNDARY AT THE SOUTH END OF MOUNT LOGAN WILDERNESS		0.00	2.10	2.10	6		NV	
0413	NC		108031		PLEASANT VALLEY SOUTH ROAD (NPS 1206)	FROM ROUTE 0409 (KELLY POINT ROAD (NPS 1203)) TO ROUTE 0418 (PLEASANT VALLEY ROAD (NPS 1204))		0.00	1.40	1.40	4		NV	
0414	NC		108044		TASSI WASH ROAD (ADMINISTRATIVE)	FROM ROUTE 0407 (PIGEON POINT ROAD (NPS 1213)) TO NPS/BLM BOUNDARY		0.00	3.77	3.77	6		NV	
0415	NC		108015		AMOS POINT ROAD (NPS 1209)	FROM ROUTE 0409 (KELLY POINT ROAD (NPS 1203)) TO AMOS POINT		0.00	6.70	6.70	4		NV	
0416	NC		108032		WHITMORE CANYON ROAD (BLM 1045)	FROM NPS/BLM BOUNDARY IN WHITMORE CANYON TO WHITMORE CANYON OVERLOOK		0.00	8.60	8.60	4		NV	
0417	NC		108042		TASSI - GYP HILLS ROAD CONNECTOR ROAD (ADMINISTRATIVE)	FROM ROUTE 0407 (PIGEON POINT ROAD (NPS 1213)) TO NPS/BLM BOUNDARY		0.00	1.62	1.62	6		NV	
0418	NC		108009		PLEASANT VALLEY ROAD (NPS 1204)	FROM ROUTE 0409 (KELLY POINT ROAD (NPS 1203)) TO PLEASANT VALLEY TANK		0.00	1.90	1.90	4		NV	
0419	NC		108030		EAST WHITMORE POINT RIDGE SPUR ROAD	FROM ROUTE 0406 (WHITMORE POINT LOOP ROAD (NPS 1264)) TO NPS/BLM BOUNDARY		0.00	1.40	1.40	4		NV	
0420	NC		108033		PA'S POCKET ROAD (NPS 1246)	FROM ROUTE 0416 (WHITMORE CANYON ROAD (BLM 1045)) TO END OF ROUTE		0.00	7.50	7.50	4		NV	
0421	NC		108016		ANDRUS POINT / GRASSIE RESERVOIR ROAD	FROM NPS/BLM BOUNDARY TO GRASSIE RESERVOIR		0.00	1.90	1.90	4		NV	
0422	NC		108014		GREEN SPRINGS SPUR ROAD (ADMINISTRATIVE)	FROM ROUTE 0409 (KELLY POINT ROAD (NPS 1203)) TO GREEN SPRINGS TANK		0.00	0.30	0.30	6		NV	

Cycle 6 NPS / RIP Route ID Report

(Numerical By Summary Route and Subcomponent #)



Shading Color Key

White = Paved Routes, DCV Driven

Grey = Paved Routes, DCV not Driven

Black = Non-NPS Routes

■ = Concession Route

Yellow = Unpaved Routes, DCV not Driven

Blue = Paved Parking Areas

Green = Unpaved Parking Areas

Red text denotes:

*Unpaved route data was obtained from the NPS and was not collected by the Road Inventory Program (RIP).

DCV = Data Collection Vehicle
 MRL = Manually Rated Line
 MRP = Manually Rated Polygon
 PKG = Parking Areas
 NC = Not Collected

Cycle 6 Summary Totals for Parashant National Monument

Cycle 6 Route Totals			
	NPS Maintained	Concessionaire Maintained	Park Totals
Paved Roads, Data Collection Vehicle Rated (Miles)	0	0	0
Paved Roads, Manually Rated Length (Miles)	0	0	0
Paved Roads, Manually Rated Area (Sq. Ft.)	0	0	0
Unpaved Roads (Miles)	140.79	0	140.79
Paved Parking (Sq. Ft.)	0	0	0
Unpaved Parking (Sq. Ft.)	0	0	0

Cycle 6 Lane Miles and Overall Pavement Condition		
	Lanes Miles*	Pavement Condition Rating**
Data Collection Vehicle Routes	0.00	N/A
Manually Rated Roads	0	N/A
Parking Areas	0.00	N/A

* Equivalent Lane Miles are calculated by route using the following equations:
 - DCV and MRLs = (PAVE_WIDTH x PAVED_MI) / 11 foot lane
 - MRPs and PKGs = SQ_FEET / 5280 / 11 foot lane

**Parking and Manually Rated Routes are assigned the following PCR values based on the type of observed distresses:
 -Excellent = 97 -Good = 90 -Fair = 73
 -Poor = 53, 30, or 0 -Construction / Not Rated = -1

Cycle 6 NPS / RIP Route ID Report

(Numerical By Summary Route and Subcomponent #)



Shading Color Key

White = Paved Routes, DCV Driven

Grey = Paved Routes, DCV not Driven

Black = Non-NPS Routes

■ = Concession Route

Yellow = Unpaved Routes, DCV not Driven

Blue = Paved Parking Areas

Green = Unpaved Parking Areas

Red text denotes:

*Unpaved route data was obtained from the NPS and was not collected by the Road Inventory Program (RIP).

DCV = Data Collection Vehicle
 MRL = Manually Rated Line
 MRP = Manually Rated Polygon
 PKG = Parking Areas
 NC = Not Collected

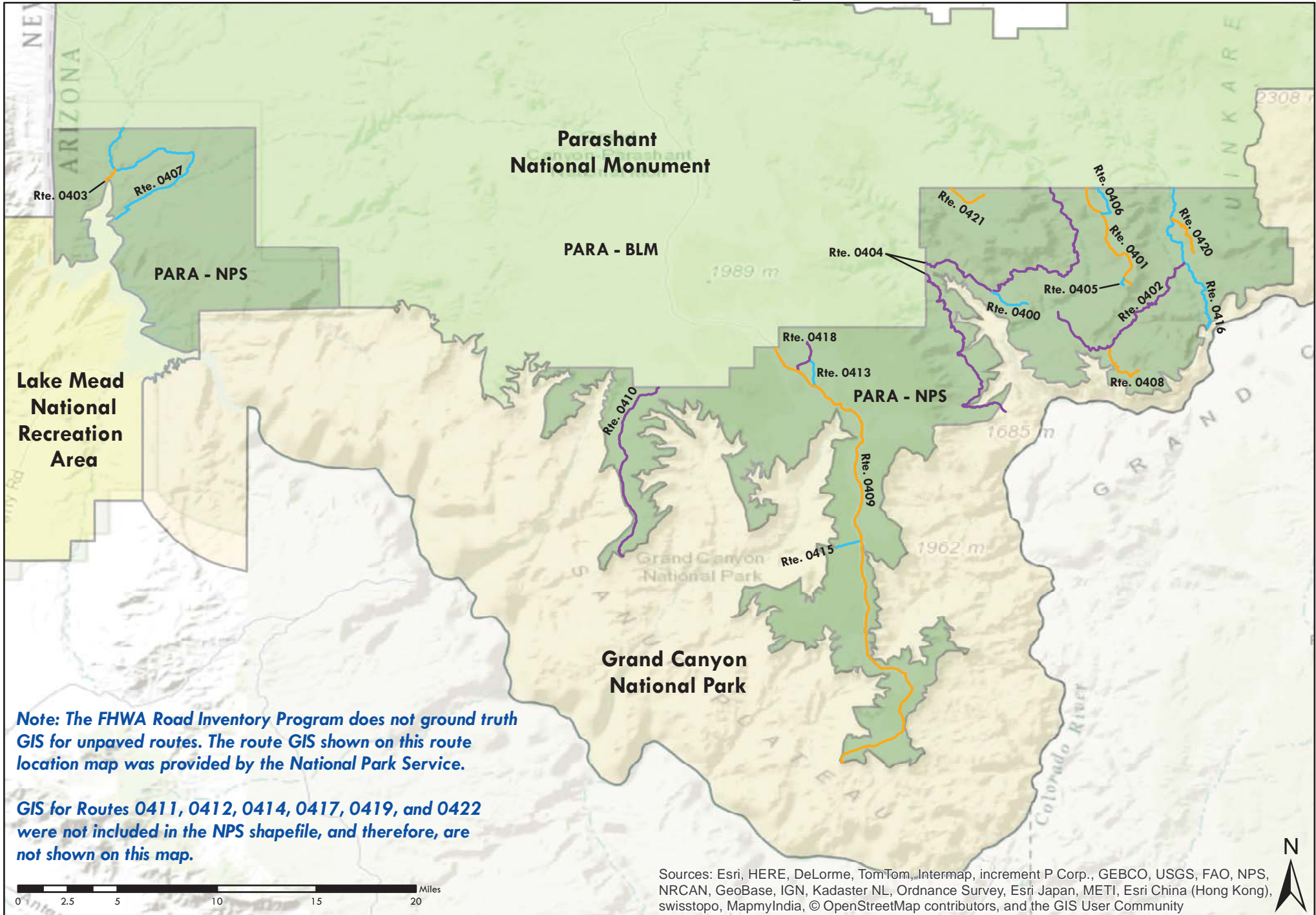
General Park Road Functional Classification (FC) Table

FC	Type	User Access	Description	Route Numbers	Surface Types
1	Principal Park Road Rural Parkway	Public	Roads which constitute the main access route, circulatory tour, or thoroughfare for park visitors. Rural Parkways (e.g. Natchez Trace) are numbered 0001 - 0009.	0001 - 0009 0010 - 0099	AS - Asphaltic Concrete Pavement
2	Connector Park Road	Public	Roads which provide access within a park to areas of scenic, scientific, recreational or cultural interest, such as overlooks, campgrounds, etc.	0100 - 0199	BR - Brick or Pavers Road Bed CB - Cobble Stone Road Bed
3	Special Purpose Park Road	Public	Roads which provide circulation within public areas, such as campgrounds, picnic areas, visitor center complexes, concessionaire facilities, etc. These roads generally serve low-speed traffic and are often designed for one-way circulation.	0200 - 0299	CO - Portland Cement Concrete Pavement GR - Gravel Road Bed
4	Primitive Park Road	Public	Roads which provide circulation through remote areas and/or access to primitive campgrounds and undeveloped areas. These roads frequently have no minimum design standards and their use may be limited to specially equipped vehicles. Note: Functional Classes 3 and 4 have the same route numbers because, historically, they were numbered similarly.	0200 - 0299	NV - Native or Dirt Material Road Bed OT - Other Materials Road Bed
5	Administrative Park Road	Public	All public roads intended for access to administrative developments or structures such as park offices, employee quarters, or utility areas.	0400 - 0499	
6	Administrative Park Road (Restricted Access)	Nonpublic	All roads normally closed to the public, including patrol roads, truck trails, and other similar roads. Note: Functional Classes 5 and 6 have the same route numbers because historically they were numbered similarly and often there is little distinction between these routes. For example, because utility areas and employee housing are often closed to the public, this restriction would result in classification of FC 6 rather than FC 5.	0400 - 0499	
7	Urban Parkway	Public	These facilities serve high volumes of park and non-park related traffic and are restricted, limited-access facilities in an urban area. This category of roads primarily encompasses the major parkways which serve as gateways to our nation's capital. Other major park roads or portions thereof, however, may be included in this category.	0001 - 0009	
8	City Street	Public	City streets are usually extensions of the adjoining street system that are owned and maintained by the National Park Service. The construction and/or reconstruction should conform with accepted local engineering practice and local conditions.	0600 - 0699	
N/A	Non-NPS Roads	Public	State, County, or City owned roads which border, traverse, or provide access to Park Facilities or Locations. Non-NPS roads are not assigned functional classes and are driven for GPS and Video Log only.	5000 - 5999	

A park road system contains those roads within or giving access to a park or other unit of the NPS which are administered by the NPS, or by the Service in cooperation with other agencies. The assignment of a functional classification (FC) to a park road is not based on traffic volumes or design speed, but on the intended use or function of that road or route.

The historic route numbering system also included a 300 series for interpretive roads, and a 500 series for one-way roads. There are approximately 250 roads nationwide which are designated by the 300 and 500 series. The numbers for these roads will be maintained for reporting consistency. However, since these interpretive and one-way routes are not as clearly tied to a specific functional class, the 300 and 500 series will be discontinued for future use.

Parashant National Monument Route Location Map



Note: The FHWA Road Inventory Program does not ground truth GIS for unpaved routes. The route GIS shown on this route location map was provided by the National Park Service.

GIS for Routes 0411, 0412, 0414, 0417, 0419, and 0422 were not included in the NPS shapefile, and therefore, are not shown on this map.

Sources: Esri, HERE, DeLorme, TomTom, Intermap, increment P Corp., GEBCO, USGS, FAO, NPS, NRCAN, GeoBase, IGN, Kadaster NL, Ordnance Survey, Esri Japan, METI, Esri China (Hong Kong), swisstopo, MapmyIndia, © OpenStreetMap contributors, and the GIS User Community